

AUCTION

Tuesday, February 26, 2008
Beginning at 10:00 AM PST
157 W. Providencia Ave., Burbank, CA 91502



WEBCAST

Can't attend the auction in person?
Bid live online at www.BIDITUP.com

PLANT CLOSED

AREA TRADE BINDERY

Complete 80,000 Square Foot State-Of-The-Art Bindery Facility

**Book Binding Equipment, Perfect Binders, Automatic Stitchers and Trimmers,
Folding Machines, Map Folders, Pencil Folders, Saddle Stitching Machines and Much More!**

FEATURING

(3) 2001 MBO Perfection Series 32" Folders, Mdl. B32VM, 6/6/4, w/Compression Stackers
2001 MBO Perfection Series 44" Map Folder, Mdl. T1120, R1120, 6/6/4
(2) 2001 MBO Palamides BA-700 Bundlers



3 AVAILABLE



3 AVAILABLE



3 AVAILABLE



2001

2 AVAILABLE

- ▶ **PERFECT BINDING LINES**
- ▶ **SADDLE STITCHING LINES**
- ▶ **PAPER FOLDING LINES**
- ▶ **GLUING UNITS**
- ▶ **COUNTER STACKERS**
- ▶ **OTHER BINDERY EQUIPMENT**
- ▶ **INVENTORY SUPPLIES**
- ▶ **MAINTENANCE ROOM**
- ▶ **MATERIAL HANDLING EQUIPMENT**
- ▶ **VEHICLES**

Sale Conducted By:

PERFECT BINDING LINES • SADDLE STITCHING LINES

PERFECT BINDING LINES

1974 MULLER MARTINI NORMBINDER - MDL. 3001-25 S/N 918709
24 Feeder Pockets Mdl. 256, 100/100/24 Ethos Carousel, 3670 3 Knife Trimmer S/N 99.02877, Muller Martini "Astro" Counter/Stacker Mdl. 1504 S/N 924135 w/Mueller Martini 20 Clamp Binder.

1984 MULLER MARTINI NORMBINDER MDL. 3001-2S S/N 99.02877
B740 21 Feeder Pockets Mdl. 256-S, S/N 99.02877 B718, 3670 3 Knife Alpine Trimmer 3670.9714.4 S/N 99.30967 Rima Counter/Stacker Mdl. 3310 S/N 331829-10, Mueller Martini 20 Clamp Binder For Use w/Hotmelt or P.U.R. Glue. Binder Equipped as Follows: P.U.R. & 55 Gallon Pail Melt System w/Nordson PB90 Wheel & Drum Melter, Custom Modified to Run 13" Drop Books.

1989 MULLER MARTINI NORMBINDER MDL. 3001-4S S/N 99.2088 C834
27 Pockets Mdl. 256-S S/N 99.20088 C833 Ethos Carousel, 3670 3 Knife Trimmer S/N 99.20743 C880 Muller Martini Counter/Stacker Mdl. 3607 S/N 99.178711 Set.

(3) MUELLER MARTINI FEEDER POCKETS MDL. 256S S/N 9.26949.

SADDLE STITCHING LINES

1984 MULLER MARTINI SADDLE STITCHER MDL. 335 S/N 05056 B886,
230V, 3 Phase, 90 Amps, 60 HZ, Main Control 335.9806 S/N 9905056 B871,
10 Pockets (C306-Sn 99.13050 C521) + 1529 L14 Cover Feeder S/N 945798
C777, 251 Trimmer w/4th and 5th Knife Attachments S/N 905056 B888, DC
Main Drive and Mdl. 225 Delivery Belt, 2 Each HK-75 Stitching Heads &
Clinchers + 2 Set of Stitching Knives 3 Each Rietschle Vacuum Pumps.

MULLER MARTINI SADDLE STITCHER - MDL. 235-5 S/N 9 42229 B411,
230V/ 3 Phase, 60 HZ, 235-9748 Main Control 942 229 B404, 10 Pockets E6
no Cover Feeder (Type 888 / S/N 00163 B457, 890 Trimmer w/4th and 5th
Knife Attachments S/N 942229 B411, DC Main Drive and Mdl. 225 Delivery
Belt, 2 Each HK-75 Stitching Heads and Clinchers + 1 Set of Stitching Knives,
2 Each Rietschle Vacuum Pumps.

MULLER MARTINI SADDLE STITCHER MDL. 235-5 S/N 9 38014 B115
230V, 3 Phase, 60HZ, 235-9748, Main Control #938014B115, 7 Pockets E6
(Type 8888 S/N 938014 B114, +1529 L12 Cover Feeder S/N 945581,
890 Trimmer w/ 4th and 5th Knife Attachments S/N 93801 B113, DC Main
Drive and Mdl. 225 Delivery Belt, 2 Each HK-75 Stitching Heads and Clinchers
1 Set of Stitching Knives, 2 Each Rietschle Vacuum Pumps.

1984 MULLER MARTINI SADDLE STITCHER MDL. 235-5, 10 Pockets E6,
1529 Cover Feeder, 890 Trimmer w/4th and 5th Knife Attachments, DC
Main Drive and Mdl. 225 Delivery Belt, 2 Each HK-75 Stitching Heads and
Clinchers 1 Set of Stitching Knives, 2 Each Rietschle Vacuum Pumps
(Recently Deinstalled & Prepared for Shipment).

CRATE OF NEW MULLER MARTINI STITCHER CHAIN For (6) 306 Feeder
Pockets (4) New Mueller Martini Closed Loop Stitcher Heads.

APPROX. (20) USED HK-75 MUELLER MARTINI STITCHING HEADS.

**LARGE VOLUME ASSORTED REPLACEMENT PARTS FOR MUELLER
MARTINI STITCHERS.**

MULLER MARTINI GLUING/INSERTING UNIT.

1992 SIMS DUAL CARD FEEDER MDL. SRS200 S/N SR200-92-1345
(Interfaced for use w/Mueller Martini Saddle Stitchers).

Views of 1974 MULLER MARTINI NORMBINDER MDL. 3001-25



TO SCHEDULE AN AUCTION OR APPRAISAL

CALL 818.508.7034

PERFECT BINDING LINES • SADDLE STITCHING LINES

**Views of
1984 MULLER MARTINI NORMBINDER
MODEL 3001-2S**



**Views of
1989 MULLER MARTINI NORMBINDER
MODEL 3001-4S**



**Views of
1984 MULLER MARTINI SADDLE
STITCHER MODEL 335**



**Views of
1984 MULLER MARTINI
SADDLE STITCHER MDL. 235-5**



WEBCAST

Can't make it to the auction in person? Bid live online at www.BIDITUP.com

Register at www.BIDITUP.com and receive auction updates via email

SADDLE STITCHING LINES • PAPER FOLDING LINES

Views of 2001 MBO PERFECTION SERIES CONTINUOUS FOLDING LINE

4 AVAILABLE



Views of 2001 MBO PERFECTION SERIES CONTINUOUS FOLDING LINE

4 AVAILABLE



MBO FOLDER B20-C PAR 4/4/4



MBO FOLDER TS72-R76 PAR 6

3 AVAILABLE



MBO Z-2 KNIFE FOLDERS

2 AVAILABLE



MBO PALAMIDES BA700 BUNDLERS

2001



STAHL FOLDER RD 66-T PAR 6/6/4

PAPER FOLDING LINES

2001 MBO PERFECTION SERIES CONTINUOUS FOLDING LINE TYPE T1120 PAR 6/6/4 S/N 0201- 80625-100-214 Equipped as Follows: Max Sheet 44"x59"Dual Feed, Split Guides, Edge Trim & Center Bleed Devices, 8pp & 16pp Right Angle Attachments, and MBO Type ASP-82ME Compression Delivery.

(3) 2001 MBO PERFECTION SERIES CONTINUOUS FOLDING LINE TYPE B32-S-R32 PAR 6/6/4 S/N's 80623, 80624 & 80625 Equipped As Follows: Max Sheet 32"x51", Dual Feed, VIVAS Vacuum Infeed & Alignment, 8pp & 16pp RA's, Split Guides, Mdl. ASP 32ME Compression Delivery.

1989 MBO CONTINUOUS FOLDING LINE TYPE B20-C PAR 4/4/4 S/N N- 02/67 Equipped as Follows: Max Sheet 20"x26", 8pp & 16pp RA Attachments & MBO B26-3 Delivery.

MBO CONTINUOUS FEED SECTION TYPE TS72-R76 PAR 6 S/N G6900 w/84" Extended Register Board for Ink Jetting & Labeling Includes Hunkler Right Angle Gluing/Folding Units Mdls. MAM-1 & MAM-2 S/N 530055 (for use w/Remoist & Hot Glue Applications) Includes Robatech Gluing Unit w/Controls.

MBO CONTINUOUS FEED SECTION TYPE TS72-R76 PAR 6 S/N G6899 w/84" Extended Register Board for Ink Jetting & Labeling Includes MBO RA Section Type SW-81/3 w/Robatech Cold Glue & Auto-Tape Applications.

MBO RA SECTION TYPE FW-2-81/8 PAR 8 S/N G9311 (Used for Map Folding Application).

1993 MBO VERTICAL STACK DELIVERY TYPE SAP- 46L S/N G4892.

(3) 2001 MBO PORTABLE KNIFE FOLD ATTACHMENTS TYPE Z-2 S/N's 80623, 80624 & 80625.

(2) MBO PORTABLE KNIFE FOLD ATTACHMENTS TYPE B20-3-X S/N's M-12/48 & M-11/136.

CIRCA 2000 MBO PORTABLE BOOK STITCHER TYPE SF-56 S/N 970316845.

LOT OF NEW MBO COMBI-ROLLS.

NUMEROUS GATE FOLD ATTACHMENTS FOR BOTH MBO & STAHL FOLDERS.

LARGE QUANTITY OF SPARE FOLDER PARTS FOR BOTH STAHL & MBO FOLDERS.

(2) 2001 PALAMIDES BUNDLER/STACKER UNITS MDL. BA-700.

LOT OF TAPE FOR PALAMIDES BUNDLERS.

CA. 1986 STAHL CONTINUOUS FOLDING LINE TYPE RD 78-T PAR 6/6/4, S/N's 256088 & 256069 Equipped as Follows: Max Sheet 32"x51", Split Guides, 8pp & 16pp Portable RA Attachments & Standard Stack Delivery.

TO SCHEDULE AN AUCTION OR APPRAISAL

CALL 818.508.7034

PAPER FOLDING LINES • GLUING UNITS • COUNTER STACKERS OTHER BINDERY EQUIPMENT



ROBATECH GLUER



VIEWS OF STITCHERS



VIEWS OF STITCHING HEADS



STAHL PHARMACEUTICAL FOLDER B-14-T36/4J



VIEW OF NORDSON GLUERS



VIEW OF STAHL STACKERS

PAPER FOLDING LINES (CONTINUED)

(2) STAHL CONTINUOUS FOLDING LINES TYPE RD 66-T PAR 6/6/4, S/N's 256071 & 243063 Equipped as Follows: Max Sheet 28"x40", Split Guides, 8pp & 16pp Portable RA Attachments & Standard Stack Delivery.

(3) STAHL PILE FED PHARMACEUTICAL FOLDERS TYPE B-14-T36/ 4J P4/4 S/N's 118146, 117130, 236085 Equipped as Follows: 8pp Portable RA & Standard Delivery.

EXTRA B-14 VERTICAL DELIVERIES FOR MINI-FOLDS.

CA. 1986 STAHL VSA 66 VERTICAL COMPRESSION STACKER MDL. VSA-M 66D S/N 256511.

(2) STAHL VSA 66 VERTICAL COMPRESSION STACK DELIVERIES W/MARKING DEVICES MDL. VSA-66-D-MKE S/N's 243520 & 243521.

(2) 1989 STAHL SKP 66 PRESSER DELIVERY STATIONS MDL. SKP-M 66 S/N's 263583 & 263584.

(4) CA. STAHL PRESSER DELIVERIES MDL. PS 66.

CA. STAHL PORTABLE KNIFE FOLD UNIT MDL. K-2 S/N 220506.

(3) STAHL SPLIT FEED STATIONS, Stahl Portable Station Feeder Mdl. M2222 S/N 266933 (2) Stahl Bump & Turn Units.

1989 STAHL CONTINUOUS FEED FOLDING LINES MDL. B-22 S/N 35679, Max Sheet 22"x 35" (These Feeders are on Skids and Condition is Uncertain).

SEVERAL EXTRA STAHL FOLD SECTIONS, GATE FOLD ATTACHMENTS & SEVERAL LOTS OF USED & NEW STAHL PARTS TOO NUMEROUS TO LIST.

GLUING UNITS

(6) NORDSON GLUING UNITS W/CONTROLS MDL. 2304 S/N's AA94B62141, AA89A02418, AA89A02419, AA89M10402, AA88B07510, AA88B07511.

NORDSON GLUING UNIT W/CONTROLS Type 4/4-US/1K44 S/N 115912.

SLAUGHTERBACK GLUER W/CONTROLS MDL. KBZOHZ S/N 206627MA.

COUNTER STACKERS

(2) RIMA COUNTER/STACKERS MDL. RS10 S/N 1190/ & Circa 1992.

(2) RIMA COUNTER/STACKERS MDL. RS10S S/N 105736-10 S/N 105735-10 (8/99).

RIMA COUNTER STACKERS MDL. RS11-9 1/4 S/N 115131-10 (6/98).

RIMA COUNTER/STACKER MDL. RS12-9 1/4 S/N 122746-12 (9/92).

OTHER BINDERY EQUIPMENT

STAHL CONTINUOUS FOLDING LINE.

WHALENBERG STAND ALONE 3 KNIFE TRIMMER MDL. 44 FO S/N 2707/44.

WAHLENBERG APPROX 50" PAPER JOGGER w/Air Bed & Adjustable Side Tables.

PAPER SKID LIFT.

(2) BAUM/LAWSON 3 SPINDLE PAPER DRILLS.

CHALLENGE TABLE TOP SINGLE SPINDLE DRILL MDL. JO S/N 51937.

1994 KIRK-RUDY WAFER SEALER INCLUDES: TABBER UNIT MDL. 527 S/N 594416 & Feeder Mdl. 324T S/N 594117.

SCITEX DIVIT INK JET PRINTER MDL. 5120 w/Controls & 2 Print Heads.

Register at www.BIDITUP.com and receive auction updates via email



2 AVAILABLE
BAUMFOLDER DRILLS



PROFOLD LABEL APPLICATOR



LABEL-AIRE APPLICATORS



HUNKELER GLUER/FOLDER



HUNKELER VEA 500



VIEW OF TY-TECH TYERS

OTHER BINDERY EQUIPMENT (CONTINUED)

- TEW HEATING EQUIPMENT FOOT POWERED SEALING MACHINE.
- (3) LABEL-AIRE LABEL APPLICATORS W/PORTABLE STANDS MDL. 2111-M S/N's 6-46798408, 6-106738903, 6-22059501.
- LABEL-AIRE LABEL APPLICATION SYSTEM W/LABEL APPLICATOR MDL. 3215 ST/LB & Label-Aire Control Module S/N 0619040.
- PRO FOLD LABEL APPLICATOR MDL. LNXDX S/N 105.
- STREAMFEEDER PORTABLE CARD FEEDER MDL. ST1250 w/o Stand S/N 12100346.
- (2) STREAMFEEDER PORTABLE CARD FEEDERS W/PORTABLE STANDS S/N's 12100348, 12100591.
- TAPE SERVICES LTD. 4-POSITION TAPE APPLICATOR MDL. STIK-IT 4280.
- SHANKLIN AUTOMATIC SHRINK WRAP LINE W/MDL. A-26A Auto Wrapper & ET1610-48" Shrink Tunnel.
- SHANKLIN AUTOMATIC SHRINK WRAP LINE W/MDL. F5 Auto Wrapper & ET 1610-48" Shrink Tunnel.
- SHANKLIN AUTOMATIC SHRINK WRAPPER MDL. F5 w/Bestronic Shrink Tunnel.
- WELDOTRON SHRINK TUNNEL.
- HUNKLER 2-STATION TIPPING MACHINE MDL. VEA 520 w/Robatech Gluer.
- INTERLAKE 5/8" SINGLE HEAD STITCHER MDL. S-3A, S/N 6133.
- INTERLAKE 1/2" SINGLE HEAD STITCHER MDL. A, S/N A1223.
- ACME 3/4" SINGLE HEAD STITCHER MDL. N3A, S/N 16364.
- ACME 1/2" SINGLE HEAD STITCHER, S/N 19505.
- BOSTITCH STITCHER MDL. 7-AW, S/N G785177 Cal-Bind Riveter Mdl. 130 LD.
- APPROX. (15) TY-TECH PLASTIC TYING MACHINES.

INVENTORY SUPPLIES

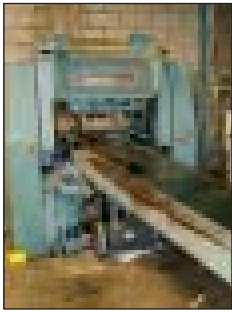
- MORE THAN 15,000 LBS STITCHING IN WIRE LOTS OF 5LB, 10LB & 20LB SPOOLS.
- (7) FULL GAYLORDS HB FULLER GLUING ADHESIVE TYPE HL 3195 Pellets 1200 Lb's Per Gaylord @ \$1.18/Lb.
- SEVERAL PALLETS HB FULLER GLUING ADHESIVE TYPE HL 6278 Pillows in 25 Lb Boxes @ \$3.33/Lb.
- APPROX. 20,000 PACKING CARTONS OF VARIOUS SIZES INCLUDING KRAFT, BROWN & #200.
- (2) PALLETS OF 4"X6" CRACK & PEEL ROLLED LABELS.
- APPROX. (20) SKIDS WIRE-O-BINDING (Multiple Colors).
- OTHER ITEMS TOO NUMEROUS TO MENTION.

MAINTENANCE ROOM

- SEBASTIAN LATHE MDL. MS9339/ES4624 S/N 179184.
- BRIDGEPORT MILLING MACHINE MDL. 40414 S/N J29166.
- FLOOR MDL. DRILL.
- FULLY EQUIPPED SHOP INCLUDING BUT NOT LIMITED TO POWER TOOLS, TAP & DIE SETS, BELTING TOOLS, METRIC TOOLS, BELTS, BELTING MATERIAL, FULL SETS OF NUTS & BOLTS, SCREWS, FILTERS, ELECTRICAL FUSES, WIRE, CONNECTORS, ICE CUBE CONNECTORS, MICRO SWITCHES & PROCESSORS AND OTHER ITEMS TOO NUMEROUS TO LIST.
- LARGE QUANTITY OF SPARE PARTS FOR STAHL, MBO, MUELLER MARTINI (STITCHERS & BINDERS), RIMA, KIRK-RUDY, LABEL-AIRE, BOSTITCH, ACME, WAHLENBERG, SHANKLIN, WELDATRON, ETC.

TO SCHEDULE AN AUCTION OR APPRAISAL

CALL 818.508.7034



WAHLENBERG TRIMMER



LIBERTY PALLET WRAPPER



1 OF 3

MAREN BALERS



VIEW OF CYLCONE SYSTEM



FORD BOX TRUCK W/ LIFTGATE



1995

KENWORTH TRACTOR WITH TRAILER

MATERIAL HANDLING EQUIPMENT

(4) 2001 YALE 6000 LB ELECTRIC PALLET LIFTS STYLE Y40 MDL. MPW060LEN24T2748 S/N A897N0160 – A97N0153 - 1Y, 2Y, 3Y, 4Y.

YALE 4000 LB ELECTRIC PALLET LIFT S/N A827N19678V.

(2) YALE 6000 LB ELECTRIC PALLET LIFTS.

HYSTER 6000 LB ELECTRIC PALLET LIFT.

HYSTER 4000 LB ELECTRIC PALLET LIFT.

(3) EXIDE LOAD HOG CHARGERS MDL. LH3-12-850.

(2) HYSTER BATTERY CHARGERS MDL. 3506-680.

(5) EXTRA PALLET LIFT BATTERIES.

NISSAN 80 6000 LB LP GAS POWERED HARD TIRE FORKLIFT MDL. C43F485 w/191” Reach & Side Shift S/N 79-023.

NISSAN 15 3000 LB LP POWERED HARD TIRE FORKLIFT MDL. P3000 S/N 134756.

ECONOMASTER IN-FLOOR AUTOMATIC PALLET WRAPPER MDL. ECON S/N 791284 (Single Phase).

LIBERTY AUTOMATIC PALLET WRAPPER.

A/D DIGITAL PALLET SCALE MDL. FC-20.

(3) MAREN ENGINEERING HORIZONTAL SELF TYING PAPER BALERS, MDL. 203 S/N'S 989901, 984905, 988032.

(3) ROOF MOUNTED CYCLONE UNITS.

VERTICAL BALER.

2005/6 GENERAL AIR COMPRESSOR (Smart Compressor).

(3) DAVEY AIR COMPRESSORS (180 HP).

(4) UPRIGHT AIR TANKS.

DRYER AND SEPARATE SYSTEM.

2,000 TO 3,000 FEET OF GALVANIZED PIPING AND FITTINGS FOR AIR SYSTEM IN BUILDING.

VEHICLES

1995 KENWORTH DIESEL TRACTOR & DUAL AXLE CHASSIS w/Air Ride Model Construct T 600 Vin #1XKAD99X555684424 (Mileage 339,605).

1995 GREAT DANE 45' TRAILER Vin #1GRAA90205B15700.

1980 INTERNATIONAL DIESEL CAB & SINGLE AXLE CHASSIS MDL. CO180B Vin. #10358BCA13229.

40' TRAILER W/O MARKINGS.

1987 FORD DIESEL TRUCK MDL. 8000 Vin # 1FDXR80UXHVA09692 (410,765 Miles) Includes 16' Box w/Mallon 6000 Lb Gate Lift Mdl. RC-6A S/N 1287251.

1987 FORD DIESEL TRUCK MDL. 8000.

LODGING

Courtyard Marriott

2100 Empire Avenue, Burbank, CA (818) 843-5500

Quality Inn

2255 N. Buena Vista St., Burbank, CA (818) 848-1680

Best Western

3910 W. Riverside Dr., Burbank, CA (818) 842-1900

**LEASE/FINANCING
AVAILABLE
DIRECT FROM
Charcole Capital Corporation
www.charcolecapi.com**

DIRECTIONS

From Los Angeles International Airport (Approximately 33 minutes, Approximately 28.14 Miles)

Start out going EAST on WORLD WAY / CENTER WAY. Merge onto S SEPULVEDA BLVD / CA-1 S toward I-105. Take the IMPERIAL HWY WEST / I-105 E ramp toward IMPERIAL TERMINAL. Merge onto I-105 E toward NORWALK. Merge onto I-110 N toward LOS ANGELES. I-110 N becomes CA-110 N. Take the I-5 FWY N / GOLDEN STATE FWY exit- EXIT 26A- on the LEFT toward SACRAMENTO. Merge onto I-5 N. Take the ALAMEDA AVE exit- EXIT 145B. Take the ALAMEDA AVE EAST ramp. Merge onto W ALAMEDA AVE. Turn LEFT onto S FLOWER ST. Turn LEFT onto W PROVIDENCIA AVE.

**LIVE
ON-SITE &
WEBCAST**

MACHINERY AUCTION

FEBRUARY 26, 2008

PLANT CLOSED

AREA TRADE BINDERY

COMPLETE 80,000 SQUARE FOOT STATE-OF-THE-ART BINDERY FACILITY

AUCTION

Tuesday, February 26, 2008
Beginning at 10:00 AM PST

PREVIEW

Monday, February 25, 2008
9:00 AM to 4:00 PM

LOCATION

157 W. Providencia Ave.
Burbank, CA 91502

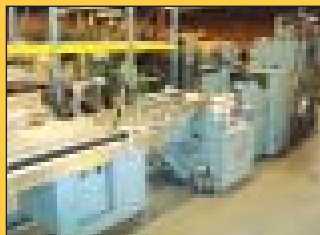
FOR THE COMPLETE TERMS & CONDITIONS OF THE AUCTION
Please visit our website - www.BIDITUP.com and click on Area Trade Bindery

Thinking of having an auction or need an appraisal? Call us at 818.508.7034

FEATURED AUCTION
TUE., FEBRUARY 26, 2008
Burbank, CA
PLANT CLOSED
COMPLETE 80,000 SQ. FT.
STATE-OF-THE-ART
BINDERY FACILITY

Book Binding Equipment,
Perfect Binders, Automatic Stitchers
and Trimmers, Folding Machines,
Map Folders, Pencil Folders, Saddle
Stitching Machines and Much More!

For a Complete Listing of Upcoming Auctions
Visit www.BIDITUP.com
Register Online and Receive Auction Updates
and Information via E-mail.

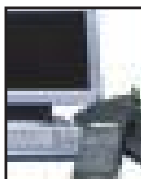


BIDITUP™
AUCTIONS & APPRAISALS WORLDWIDE
11426 Ventura Boulevard
Studio City, California 91604
Phone: 818.508.7034
Fax: 818.508.3025
info@biditup.com
Steven R. Mattes, Auctioneer,
CA Bond No. CSC3062775

MACHINERY AUCTION, LOOK INSIDE!

**ATTENTION: PLANT MANAGER
OR EQUIPMENT BUYER**

WEBCAST AUCTION



Can't attend the auction in person? You can participate and bid in real time via the Internet. Preview assets with detailed digital photos, lot catalogs, and in-depth descriptions.

For more information, visit
www.BIDITUP.com