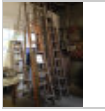


## Valley Steel & Welding

by BIDITUP Auctions Worldwide

- Event Begins: Wednesday, April 8, 10:00 AM Pacific
- First lots ends Thursday, April 9, 10:00 AM Pacific
- Last lot ends Thursday, April 9, 12:26 PM Pacific

Featuring: Metal Muncher Iron Worker, HTC CNC Hydraulic Press Brake, Niagara Mechanical Shear, Leblond Regal Engine Lathe, South Bend Milling Machine, Large Quantity Of Press Brake Dies & Much More



### Ladders

Lot #1 (Sale Order 1 of 74)

Ladders



### Table with Content

Lot #2 (Sale Order 2 of 74)

Table with Content



### Contents of Office excluding any business or personal paperwork

Lot #3 (Sale Order 3 of 74)

Contents of Office excluding any business or personal paperwork



### Milwaukee Mag Drill

Lot #4 (Sale Order 4 of 74)

Milwaukee Mag Drill



### Milwaukee Sawzall & Rockwell Porta-Band Saw

Lot #5 (Sale Order 5 of 74)

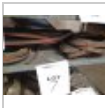
Milwaukee Sawzall & Rockwell Porta-Band Saw



### Lot of Power Drills

Lot #6 (Sale Order 6 of 74)

Lot of Power Drills



### Lot of Oxy Acetylene Hose

Lot #7 (Sale Order 7 of 74)

Lot of Oxy Acetylene Hose



### Enerpac Bender and Cart

Lot #8 (Sale Order 8 of 74)

Enerpac Bender and Cart



### Signode Banding Cart & Tools

Lot #9 (Sale Order 9 of 74)

Signode Banding Cart & Tools



**Clipper Belt Lacer & Supplies**

Lot #10 (Sale Order 10 of 74)

Clipper Belt Lacer & Supplies

---



**Union 76 Overalls**

Lot #11 (Sale Order 11 of 74)

Union 76 Overalls

---



**Pepsi Machine**

Lot #12 (Sale Order 12 of 74)

Pepsi Machine

---



**Heavy Duty Steel Cabinet with Supplies**

Lot #13 (Sale Order 13 of 74)

Heavy Duty Steel Cabinet with Supplies

---



**Two Drill Presses**

Lot #14 (Sale Order 14 of 74)

Two Drill Presses

---



**Buffalo #22 Drill Press, 22" Swing, 19.5" Table, 1.5 HP Motor**

Lot #15 (Sale Order 15 of 74)

Buffalo #22 Drill Press, 22" Swing, 19.5" Table, 1.5 HP Motor

---



**Cabinet with Drills**

Lot #16 (Sale Order 16 of 74)

Cabinet with Drills

---



**Parts Carousel**

Lot #17 (Sale Order 17 of 74)

Parts Carousel

---



**Lot of Go-Kart Parts**

Lot #18 (Sale Order 18 of 74)

Lot of Go-Kart Parts

---



**Trailer Project**

Lot #19 (Sale Order 19 of 74)

Trailer Project

---



**Lot of Uni Punches**

Lot #20 (Sale Order 20 of 74)

Lot of Uni Punches

---



**Contents of Trailer Excluding Shear Blades for Niagara Shear. Contents incl**

Lot #21 (Sale Order 21 of 74)

Contents of Trailer Excluding Shear Blades for Niagara Shear. Contents include motors, nuts, bolts, hardware, misc.



#### Contents of Trailer

Lot #22 (Sale Order 22 of 74)

Contents of Trailer

---



#### Pipe Threader

Lot #23 (Sale Order 23 of 74)

Pipe Threader

---



#### Lot of Scrap Metal , Roller Conveyor, Material Rack, Misc.

Lot #24 (Sale Order 24 of 74)

Lot of Scrap Metal , Roller Conveyor, Material Rack, Misc.

---



#### Metal Muncher Model MM61E Iron Worker Serial # 2905680, 4' x 4', 49 ton,

Lot #25 (Sale Order 25 of 74)

Metal Muncher Model MM61E Iron Worker Serial # 2905680, 4' x 4', 49 ton, hydraulic, dual cylinder integrated section shear, 13/16" thru 3/4" Capacity, 6" x 1" to 22" x 3/16" Plate Shear, 1-1/4" Square Rod, 1-3/8" Round, 4" x 4" x 3/8" Angle to 3" x 3"x 1/2" Coper Notcher, Large Quantity of Punches & Dies

---



#### HTC Press Brake Model 100-12H Serial #481T2227 with Autogauge G24 Backgauge,

Lot #26 (Sale Order 26 of 74)

HTC Press Brake Model 100-12H Serial #481T2227 with Autogauge G24 Backgauge, 100 ton x 14'

---



#### Lot of Press Brake Dies

Lot #26A (Sale Order 26 of 74)

Lot of Press Brake Dies

---



#### 10' 7'' Long 4 Way Press Brake Die

Lot #26B (Sale Order 26 of 74)

10' 7'' Long 4 Way Press Brake Die

---



#### Lot of Press Brake Dies

Lot #26C (Sale Order 26 of 74)

Lot of Press Brake Dies

---



#### Lot of Press Brake Dies

Lot #26D (Sale Order 26 of 74)

Lot of Press Brake Dies

---



#### Lot of Press Brake Dies

Lot #26E (Sale Order 26 of 74)

Lot of Press Brake Dies

---



#### Airco 250 Amp D.C. Welder with Wire Feeder and 1 Welding Tank

Lot #27 (Sale Order 27 of 74)

Airco 250 Amp D.C. Welder with Wire Feeder and 1 Welding Tank

---



#### Welding Tanks

Lot #28 (Sale Order 28 of 74)

Welding Tanks



---

**Lot of Welding Tanks**

Lot #28A (Sale Order 28 of 74)

Lot of Welding Tanks

---



**Miller Syncrowave 350 Welder, Bernard Cooler, Welding Tank**

Lot #29 (Sale Order 29 of 74)

Miller Syncrowave 350 Welder, Bernard Cooler, Welding Tank

---



**Airco CV-250 Welder, Wire Feeder, Welding Tank**

Lot #30 (Sale Order 30 of 74)

Airco CV-250 Welder, Wire Feeder, Welding Tank

---



**Oxy Acetylene Cutting Torch Rig**

Lot #31 (Sale Order 31 of 74)

Oxy Acetylene Cutting Torch Rig

---

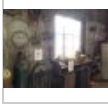


**Oxy Acetylene Cutting Torch Setup**

Lot #32 (Sale Order 32 of 74)

Oxy Acetylene Cutting Torch Setup

---



**Misc. Welding Supplies**

Lot #33 (Sale Order 33 of 74)

Misc. Welding Supplies

---



**Lot of Welding Rod**

Lot #34 (Sale Order 34 of 74)

Lot of Welding Rod

---



**Arcair Cutting Leads & Tweco Mig Lead**

Lot #35 (Sale Order 35 of 74)

Arcair Cutting Leads & Tweco Mig Lead

---



**4' x 10' 3/8" thick Welding Table**

Lot #36 (Sale Order 36 of 74)

4' x 10' 3/8" thick Welding Table

---



**48" x 7' 1" thick Welding Table with Vise**

Lot #37 (Sale Order 37 of 74)

48" x 7' 1" thick Welding Table with Vise

---



**3' x 9' 1/4" thick Welding Table with Vise**

Lot #38 (Sale Order 38 of 74)

3' x 9' 1/4" thick Welding Table with Vise

---



**Cincinnati Double End Grinder 1/2 HP**

Lot #39 (Sale Order 39 of 74)

Cincinnati Double End Grinder 1/2 HP



---

**18" Disc Sander , 5 HP**

Lot #40 (Sale Order 40 of 74)

18" Disc Sander , 5 HP

---

**2 HP Reuland Double End Grinder**

Lot #41 (Sale Order 41 of 74)

2 HP Reuland Double End Grinder

---

**Lot of Clamps**

Lot #42 (Sale Order 42 of 74)

Lot of Clamps

---

**Bewo 14" Cold Saw , Model 350LTPKPD, S/N 10071289, Air Vise, Auto Feed, Ro**

Lot #43 (Sale Order 43 of 74)

Bewo 14" Cold Saw , Model 350LTPKPD, S/N 10071289, Air Vise, Auto Feed, Roller Conveyor

---

**Leblond Regal 14" x 48" Engine Lathe, S/N 2B1714, Comes with 3 lathe chuc**

Lot #44 (Sale Order 44 of 74)

Leblond Regal 14" x 48" Engine Lathe, S/N 2B1714, Comes with 3 lathe chucks, collet closer, two steady rests, tool post, Trav-A-Dial Gage

---

**South Bend Milling Machine, 9" x 32" Table, Servo Power Feed, Machine Vis**

Lot #45 (Sale Order 45 of 74)

South Bend Milling Machine, 9" x 32" Table, Servo Power Feed, Machine Vise

---

**Table with Material ( No Lathe Tooling )**

Lot #46 (Sale Order 46 of 74)

Table with Material ( No Lathe Tooling )

---

**Miller SRH-333 D.C. Arc Welding Supply**

Lot #47 (Sale Order 47 of 74)

Miller SRH-333 D.C. Arc Welding Supply

---

**Miller Model 10FT Spot Welder, 10 KVA**

Lot #48 (Sale Order 48 of 74)

Miller Model 10FT Spot Welder, 10 KVA

---

**Dayton 3Z990 Horizontal Bandsaw 1/2 HP**

Lot #49 (Sale Order 49 of 74)

Dayton 3Z990 Horizontal Bandsaw 1/2 HP

---

**Lot of Material & Misc.**

Lot #50 (Sale Order 50 of 74)

Lot of Material & Misc.

---

**Yale Model GLP050RFNUE086 Serial # N854804 5000 lbs. LPG Forklift, Side Sh**

Lot #51 (Sale Order 51 of 74)

Yale Model GLP050RFNUE086 Serial # N854804 5000 lbs. LPG Forklift, Side Shift, Extra Hydraulic Station for Accessory



**Lot of Carts & Dolly**

Lot #52 (Sale Order 52 of 74)

Lot of Carts & Dolly

---



**Cantilever Rack with Material**

Lot #53 (Sale Order 53 of 74)

Cantilever Rack with Material

---



**Kalamazoo Model 3CW Horizontal Bandsaw , S/N: 2035671**

Lot #54 (Sale Order 54 of 74)

Kalamazoo Model 3CW Horizontal Bandsaw , S/N: 2035671

---



**Niagara 36" Power Slip Roll**

Lot #55 (Sale Order 55 of 74)

Niagara 36" Power Slip Roll

---



**Large Lot of Aluminum and Metal Sheet**

Lot #56 (Sale Order 56 of 74)

Large Lot of Aluminum and Metal Sheet

---



**Steel Plate with Rack**

Lot #57 (Sale Order 57 of 74)

Steel Plate with Rack

---



**Large Quantity of Steel Material and Rack**

Lot #58 (Sale Order 58 of 74)

Large Quantity of Steel Material and Rack

---



**Lot of Steel Material**

Lot #58A (Sale Order 58 of 74)

Lot of Steel Material

---



**Lot of Steel I-Beams**

Lot #59 (Sale Order 59 of 74)

Lot of Steel I-Beams

---



**Niagara Model KL14, S/N: 45293 Mechanical Shear, 14' x 1/4" Capacity. Com**

Lot #60 (Sale Order 60 of 74)

Niagara Model KL14, S/N: 45293 Mechanical Shear, 14' x 1/4" Capacity. Comes with extra set of blades

---



**Welder Generator on Trailer. Working when last used a few years ago. Needs**

Lot #61 (Sale Order 61 of 74)

Welder Generator on Trailer. Working when last used a few years ago. Needs battery and tune up.

---



**Lot Of Steel Material In Yard, Excluding Those Items Tagged Separately, Ple**

Lot #62 (Sale Order 62 of 74)

Lot Of Steel Material In Yard, Excluding Those Items Tagged Separately, Please Inspect.



**12 Ft. X 4 Ft. Welding Table**

Lot #62A (Sale Order 62 of 74)

12 Ft. X 4 Ft. Welding Table

---



**Lot of Steel I-Beams**

Lot #62B (Sale Order 62 of 74)

Lot of Steel I-Beams

---

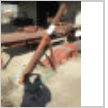


**Lot of Conveyor**

Lot #62C (Sale Order 62 of 74)

Lot of Conveyor

---



**Forklift Boom Attachment**

Lot #63 (Sale Order 63 of 74)

Forklift Boom Attachment

---



**Forklift Extensions 7'**

Lot #64 (Sale Order 64 of 74)

Forklift Extensions 7'