

Surplus To The Ongoing Operations Of Seacast, Inc.

by BIDITUP Auctions Worldwide

- Event Begins: Thursday, September 17, 11:00 AM Eastern
- First lots ends Monday, September 21, 11:00 AM Eastern
- Last lot ends Monday, September 21, 2:26 PM Eastern

Two Day "Multiple Location Global Online Auction - Surplus Machinery And Equipment



(1997) MPI Paste Wax Press, Model 12 T, S/N 849, 1.5 HP,

Lot #1 (Sale Order 1 of 104)

(1997) MPI Paste Wax Press, Model 12 T, S/N 849, 1.5 HP,



MPI Wax Press, Model 14-12, S/N 850, 1.5 HP

Lot #2 (Sale Order 2 of 104)

MPI Wax Press, Model 14-12, S/N 850, 1.5 HP



50 ton Newbury Plastic Press, Model NV3-5400, S/N 3955, 10 HP

Lot #3 (Sale Order 3 of 104)

50 ton Newbury Plastic Press, Model NV3-5400, S/N 3955, 10 HP



20 ton Shell-O-Matic Press, Model 20T-20, S/N 1012

Lot #4 (Sale Order 4 of 104)

20 ton Shell-O-Matic Press, Model 20T-20, S/N 1012



20 ton Arburg Platic Press

Lot #5 (Sale Order 5 of 104)

20 ton Arburg Platic Press



MPI Wax Tempering Unit #1, Model 14, S/N 14-2, 1/2 HP

Lot #6 (Sale Order 6 of 104)

MPI Wax Tempering Unit #1, Model 14, S/N 14-2, 1/2 HP



MPI Wax Tempering Unit #2, Model 14, S/N 14-2, 1/2 HP

Lot #7 (Sale Order 7 of 104)

MPI Wax Tempering Unit #2, Model 14, S/N 14-2, 1/2 HP



Donaldson Torit Downflo Dust Collector, Model SDF 6 QD, S/N IG561832-001, 7

Lot #8 (Sale Order 8 of 104)

Donaldson Torit Downflo Dust Collector, Model SDF 6 QD, S/N IG561832-001, 7.5 HP, 6 Cartridge



Torit Dust Collectors, Model 84, 3 HP

Lot #9 (Sale Order 9 of 104)

Torit Dust Collectors, Model 84, 3 HP



Despatch Convection Oven, S/N 112153 - L, Max Operating Temp: 200 Degrees F

Lot #10 (Sale Order 10 of 104)

Despatch Convection Oven, S/N 112153 - L, Max Operating Temp: 200 Degrees F, 5.7 Kw



Ebbert Wax Extruder, Model 13320, S/N 14313, 7.5 HP

Lot #11 (Sale Order 11 of 104)

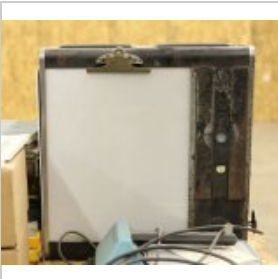
Ebbert Wax Extruder, Model 13320, S/N 14313, 7.5 HP



Spencer Blower, 3 HP

Lot #12 (Sale Order 12 of 104)

Spencer Blower, 3 HP



Kelley Koett Light Projector, Model Type G 1, S/N 30

Lot #13 (Sale Order 13 of 104)

Kelley Koett Light Projector, Model Type G 1, S/N 30



Fluidized Bed, Dimensions: 30" x 24"

Lot #14 (Sale Order 14 of 104)

Fluidized Bed, Dimensions: 30" x 24"



Andrex Model 3002 AUT X-Ray System, S/N 34645/55418 BI

Lot #15 (Sale Order 15 of 104)

Andrex Model 3002 AUT X-Ray System, S/N 34645/55418 BI



Spectro LAB S Spectrometer, S/N 2699/89

Lot #16 (Sale Order 16 of 104)

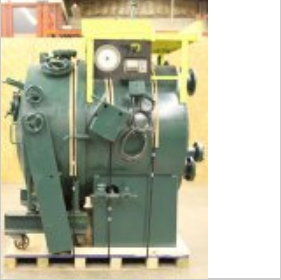
Spectro LAB S Spectrometer, S/N 2699/89



Strato Lift, Model KRX-20, S/N 9173, Max Height: 20 ft., Electric

Lot #17 (Sale Order 17 of 104)

Strato Lift, Model KRX-20, S/N 9173, Max Height: 20 ft., Electric



Stokes Vacuum Melter, Model 436-50, S/N P-65199, Jacket Rated 10 PSI

Lot #18 (Sale Order 18 of 104)

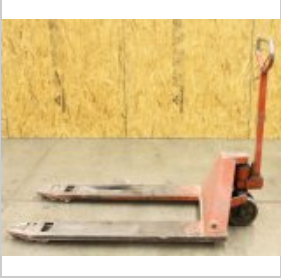
Stokes Vacuum Melter, Model 436-50, S/N P-65199, Jacket Rated 10 PSI



Saunders Preheat Oven, 3' x 5' (Custom Made)

Lot #19 (Sale Order 19 of 104)

Saunders Preheat Oven, 3' x 5' (Custom Made)



5,500 lb Magnum Pallet Jack, Model M55, S/N 102136

Lot #20 (Sale Order 20 of 104)

5,500 lb Magnum Pallet Jack, Model M55, S/N 102136



2,500 Gallon Bulk Service Tank, Asset #1077

Lot #21 (Sale Order 21 of 104)

2,500 Gallon Bulk Service Tank, Asset #1077



Metal Dumper, 4' Dim (Custom Made)

Lot #22 (Sale Order 22 of 104)

Metal Dumper, 4' Dim (Custom Made)



3" Fox Grinder, Model 510-42WS, S/N 4986640

Lot #23 (Sale Order 23 of 104)

3" Fox Grinder, Model 510-42WS, S/N 4986640



Donaldson Torit Downflo Dust Collector, Model SDF 6 QD, S/N IG420511-001, 7

Lot #24 (Sale Order 24 of 104)

Donaldson Torit Downflo Dust Collector, Model SDF 6 QD, S/N IG420511-001, 7.5 HP, 6 Cartridge



(1993) Torex Vibratory, Model T4822, S/N 4822

Lot #25 (Sale Order 25 of 104)

(1993) Torex Vibratory, Model T4822, S/N 4822



Mitutoyo PJ 300 Optical Comparator, S/N 9680, w/ Quadra-Chek II

Lot #26 (Sale Order 26 of 104)

Mitutoyo PJ 300 Optical Comparator, S/N 9680, w/ Quadra-Chek II



Detroit Testing Machine, Model ST-1, Model 521

Lot #27 (Sale Order 27 of 104)

Detroit Testing Machine, Model ST-1, Model 521



Misc. Scales

Lot #28 (Sale Order 28 of 104)

Misc. Scales



4,150 lb Clark Forklift, Model GCX25, S/N GX230-255-8390-KDF, Propane (NEED

Lot #29 (Sale Order 29 of 104)

4,150 lb Clark Forklift, Model GCX25, S/N GX230-255-8390-KDF, Propane (NEEDS OIL PUMP)



Blower Motor

Lot #30 (Sale Order 30 of 104)

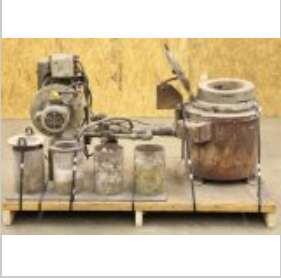
Blower Motor



36" Diameter A.S.E.G Galloni Centrifical Melt Unit, Model K5C, S/N 8669

Lot #31 (Sale Order 31 of 104)

36" Diameter A.S.E.G Galloni Centrifical Melt Unit, Model K5C, S/N 8669



Quick Melt, Model C10, 12" Diameter

Lot #32 (Sale Order 32 of 104)

Quick Melt, Model C10, 12" Diameter



VIP Melt Cabinet, Model 175-30, S/N 99C-105902-246-11, 175 Kw, 250 KVA, 300

Lot #33 (Sale Order 33 of 104)

VIP Melt Cabinet, Model 175-30, S/N 99C-105902-246-11, 175 Kw, 250 KVA, 300 lb Units 2



Inductotherm, 300lb Unit, S/N 11392, 175 Kw w/ Power Supplies

Lot #34 (Sale Order 34 of 104)

Inductotherm, 300lb Unit, S/N 11392, 175 Kw w/ Power Supplies



Inductotherm, 300lb Unit, S/N 99-109302, 175 Kw w/ Power Supplies

Lot #35 (Sale Order 35 of 104)

Inductotherm, 300lb Unit, S/N 99-109302, 175 Kw w/ Power Supplies



Pangborn Blaster, Model GF 1, S/N 2GF-711

Lot #36 (Sale Order 36 of 104)

Pangborn Blaster, Model GF 1, S/N 2GF-711



Pangborn Tumble Blaster, Model GF 1, S/N 2GF-687, 24" Barrel

Lot #37 (Sale Order 37 of 104)

Pangborn Tumble Blaster, Model GF 1, S/N 2GF-687, 24" Barrel



Trinco Sand Blaster, Asset #1108

Lot #38 (Sale Order 38 of 104)

Trinco Sand Blaster, Asset #1108



Wheelabrator, Model Frye, S/N A122253, 3' x 3'

Lot #39 (Sale Order 39 of 104)

Wheelabrator, Model Frye, S/N A122253, 3' x 3'



Waage Wax Melting Pot, Model WP160A-8, 220 V, 3 Phase, 7,700 Watt

Lot #40 (Sale Order 40 of 104)

Waage Wax Melting Pot, Model WP160A-8, 220 V, 3 Phase, 7,700 Watt



Ruemelin Tumble Blaster, 1/3 HP, 20" x 30"

Lot #41 (Sale Order 41 of 104)

Ruemelin Tumble Blaster, 1/3 HP, 20" x 30"



Trinco Sand Blaster, 10 CFM, Asset #1111

Lot #42 (Sale Order 42 of 104)

Trinco Sand Blaster, 10 CFM, Asset #1111



(1943) 18" Besly Chicago Dual Disc Sander, Model 36557, S/N 1018038

Lot #43 (Sale Order 43 of 104)

(1943) 18" Besly Chicago Dual Disc Sander, Model 36557, S/N 1018038



18" Besly Chicago Dual Disc Sander, Model 5, S/N 58

Lot #44 (Sale Order 44 of 104)

18" Besly Chicago Dual Disc Sander, Model 5, S/N 58



Divine Belt Grinder, 4 x 132, Power Pack Unit

Lot #45 (Sale Order 45 of 104)

Divine Belt Grinder, 4 x 132, Power Pack Unit



4" Porter Cable Belt Grinder

Lot #46 (Sale Order 46 of 104)

4" Porter Cable Belt Grinder



Lincoln Square Wave Tig 355 Welder, S/N U100214403

Lot #47 (Sale Order 47 of 104)

Lincoln Square Wave Tig 355 Welder, S/N U100214403



X-Ray Film Reader

Lot #48 (Sale Order 48 of 104)

X-Ray Film Reader



Nichols Abrasive Saw, 8" Cutting Wheel

Lot #49 (Sale Order 49 of 104)

Nichols Abrasive Saw, 8" Cutting Wheel



16" Abrasive Cut-Off Saw (Custom Made)

Lot #50 (Sale Order 50 of 104)

16" Abrasive Cut-Off Saw (Custom Made)



16" Wet Cut-Off Saw, S/N 1777-5, 10 HP

Lot #51 (Sale Order 51 of 104)

16" Wet Cut-Off Saw, S/N 1777-5, 10 HP



Hammond Belt Sander, Model 1000-D-B, S/N 1387, 7.5 HP

Lot #52 (Sale Order 52 of 104)

Hammond Belt Sander, Model 1000-D-B, S/N 1387, 7.5 HP



Dayton 2C869 Weld Bench Ventilator, 1/3 HP

Lot #53 (Sale Order 53 of 104)

Dayton 2C869 Weld Bench Ventilator, 1/3 HP



Cotterman 800lb Cap. 3-Step Stair Ladder

Lot #54 (Sale Order 54 of 104)

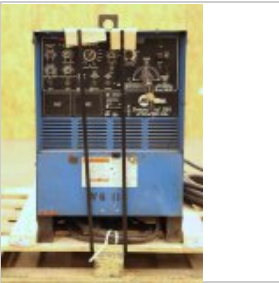
Cotterman 800lb Cap. 3-Step Stair Ladder



Linde UCC-305 Power Supply, S/N C79G14155

Lot #55 (Sale Order 55 of 104)

Linde UCC-305 Power Supply, S/N C79G14155



Miller Synchronwave 250, S/N KF884287

Lot #56 (Sale Order 56 of 104)

Miller Synchronwave 250, S/N KF884287



Miller Econo Twin Arc Welder, 150 Amp AC/DC

Lot #57 (Sale Order 57 of 104)

Miller Econo Twin Arc Welder, 150 Amp AC/DC



Branson, Model SC-12041, S/N 3542-0801 w/ Sonicor Band Scanner 2000 on Cart

Lot #58 (Sale Order 58 of 104)

Branson, Model SC-12041, S/N 3542-0801 w/ Sonicor Band Scanner 2000 on Cart



Torit Bag Type Dust Collector, Model 84, 3HP

Lot #59 (Sale Order 59 of 104)

Torit Bag Type Dust Collector, Model 84, 3HP



Bittercreek Wax Melter, Model AMEIT200, 110 V, 1 Phase, 15 Amp

Lot #60 (Sale Order 60 of 104)

Bittercreek Wax Melter, Model AMEIT200, 110 V, 1 Phase, 15 Amp



DeCore US Drillhead Knockout Machine

Lot #61 (Sale Order 61 of 104)

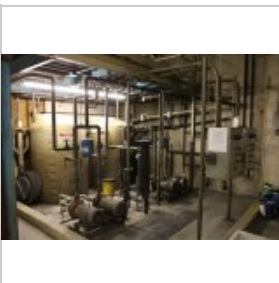
DeCore US Drillhead Knockout Machine



14" Rockwell Vertical Band Saw, Model 28-300, S/N HN8774

Lot #62 (Sale Order 62 of 104)

14" Rockwell Vertical Band Saw, Model 28-300, S/N HN8774



Water Cooling System, Double Pumping Station Each w/ Backup Pump, Alarms and Controls

Lot #63 (Sale Order 63 of 104)

Water Cooling System, Double Pumping Station Each w/ Backup Pump, Alarms and Controls, (4) 10HP Ingersoll Dresser (Worthington) Model D824 Pumps, 460 Volt / 15 Amp per Pumping Station, (2) 500 Gallon Poly Tanks



Goff 2 HP Dust Collector, Model 1850 DC, S/N 90181-50-32-62

Lot #64 (Sale Order 64 of 104)

Goff 2 HP Dust Collector, Model 1850 DC, S/N 90181-50-32-62



Dayton 7.5 HP Blower, 15 5/8" Wheel Diameter, Model 3C106B

Lot #65 (Sale Order 65 of 104)

Dayton 7.5 HP Blower, 15 5/8" Wheel Diameter, Model 3C106B



Spindle Grinder

Lot #66 (Sale Order 66 of 104)

Spindle Grinder



1,000 lb Barrel Dolly, S/N 74SS

Lot #67 (Sale Order 67 of 104)

1,000 lb Barrel Dolly, S/N 74SS



(1997) Enco Floor Drill Press, Model 126-210, S/N 014-74

Lot #68 (Sale Order 68 of 104)

(1997) Enco Floor Drill Press, Model 126-210, S/N 014-74



Rockwell Floor Drill Presses, (1) is Model 15-655, S/N 1777081

Lot #69 (Sale Order 69 of 104)

Rockwell Floor Drill Presses, (1) is Model 15-655, S/N 1777081



(1981) WSF Industries Autoclave, Model RT4, S/N 14128, 150 PSI, 365 Deg.

Lot #70 (Sale Order 70 of 104)

(1981) WSF Industries Autoclave, Model RT4, S/N 14128, 150 PSI, 365 Deg.



Belt Sander (Custom Made) 2" x 132", 5 HP

Lot #71 (Sale Order 71 of 104)

Belt Sander (Custom Made) 2" x 132", 5 HP



Aadabri Pulse Dust Collector, 20 HP

Lot #72 (Sale Order 72 of 104)

Aadabri Pulse Dust Collector, 20 HP



Bridgeport Mill, S/N 2J-16008, R8 Collet, ProtoTrak MX2 Control

Lot #73 (Sale Order 73 of 104)

Bridgeport Mill, S/N 2J-16008, R8 Collet, ProtoTrak MX2 Control



Southwestern TRAK-TRM Mill, S/N 94-450 (115V Control Not Working)

Lot #74 (Sale Order 74 of 104)

Southwestern TRAK-TRM Mill, S/N 94-450 (115V Control Not Working)



Southwestern TRAK-DPM, S/N 95-2130, (110V Control Not Working)

Lot #75 (Sale Order 75 of 104)

Southwestern TRAK-DPM, S/N 95-2130, (110V Control Not Working)



Jotes Surface Grinder, Model SPC20A, S/N 4158

Lot #76 (Sale Order 76 of 104)

Jotes Surface Grinder, Model SPC20A, S/N 4158



Shell-O-Matic Slurr Tank, 42" Diameter, 33" Depth, 2 HP

Lot #77 (Sale Order 77 of 104)

Shell-O-Matic Slurr Tank, 42" Diameter, 33" Depth, 2 HP



Fluidized Bed, 45" Diameter, 32" Depth

Lot #78 (Sale Order 78 of 104)

Fluidized Bed, 45" Diameter, 32" Depth



Shell-O-Matic Slurry Tank, 41" Diameter, 36" Depth, 2 HP, 2-Paddle

Lot #79 (Sale Order 79 of 104)

Shell-O-Matic Slurry Tank, 41" Diameter, 36" Depth, 2 HP, 2-Paddle



Shell-O-Matic Prime Slurry Tank, 54" Diameter, 30" Depth, 3 HP

Lot #80 (Sale Order 80 of 104)

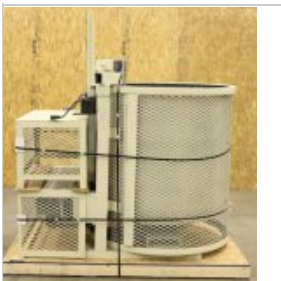
Shell-O-Matic Prime Slurry Tank, 54" Diameter, 30" Depth, 3 HP



Shell-O-Matic Prime Slurry Tank, 36" Diameter, 33" Depth, 2 HP

Lot #81 (Sale Order 81 of 104)

Shell-O-Matic Prime Slurry Tank, 36" Diameter, 33" Depth, 2 HP



Shell-O-Matic Ceramic Slurry Tank, 41" Diameter, 36" Depth, 2-Paddle

Lot #82 (Sale Order 82 of 104)

Shell-O-Matic Ceramic Slurry Tank, 41" Diameter, 36" Depth, 2-Paddle



Shell-O-Matic Slurry Tank, 54" Diameter, 30" Depth

Lot #83 (Sale Order 83 of 104)

Shell-O-Matic Slurry Tank, 54" Diameter, 30" Depth



Shell-O-Matic Slurry Tank, 36" Diameter, 33" Depth, 2 HP

Lot #84 (Sale Order 84 of 104)

Shell-O-Matic Slurry Tank, 36" Diameter, 33" Depth, 2 HP



Prewet Tank, 46" Diameter, 33" Depth

Lot #85 (Sale Order 85 of 104)

Prewet Tank, 46" Diameter, 33" Depth



Fluidized Bed, 45" Diameter, 32" Depth

Lot #86 (Sale Order 86 of 104)

Fluidized Bed, 45" Diameter, 32" Depth



24" Ventimatic Maxx Air Fans, 110 Volt, 1 Phase

Lot #87 (Sale Order 87 of 104)

24" Ventimatic Maxx Air Fans, 110 Volt, 1 Phase



Vacu-Blast Hand Blasting Cabinet, 5' x 4', S/N J64081, w/ 30" Dia. Internal

Lot #88 (Sale Order 88 of 104)

Vacu-Blast Hand Blasting Cabinet, 5' x 4', S/N J64081, w/ 30" Dia. Internal Turntable



5,500 lb Little Mule Pallet Jack

Lot #89 (Sale Order 89 of 104)

5,500 lb Little Mule Pallet Jack



1,000 lb Presto Hydraulic Lift Truck, Model M478-MOD, S/N 1588 JH

Lot #90 (Sale Order 90 of 104)

1,000 lb Presto Hydraulic Lift Truck, Model M478-MOD, S/N 1588 JH



Sigma Water Tester

Lot #91 (Sale Order 91 of 104)

Sigma Water Tester



Arti Chill Evaporative Cooling Tower, Model ST-40, 3/4 HP, 40T Cooling Cap.

Lot #92 (Sale Order 92 of 104)

Arti Chill Evaporative Cooling Tower, Model ST-40, 3/4 HP, 40T Cooling Cap.



Howe Richardson XL Scale, S/N 73-09627

Lot #93 (Sale Order 93 of 104)

Howe Richardson XL Scale, S/N 73-09627



Rockwell Hardness, Model 4DT P, S/N 486 481

Lot #94 (Sale Order 94 of 104)

Rockwell Hardness, Model 4DT P, S/N 486 481



Pedestal Sander, w/ Built-In Guard & Collection Box

Lot #95 (Sale Order 95 of 104)

Pedestal Sander, w/ Built-In Guard & Collection Box



Charles A. Hones Preheat & Burnout Ovens, Model 57-B, 160,000 btu, Dimensio

Lot #96 (Sale Order 96 of 104)

Charles A. Hones Preheat & Burnout Ovens, Model 57-B, 160,000 btu, Dimensions: 23" x 23" x 24" / 20" x 20" Hearth



Steam Dewaxers, 2' x 3'

Lot #97 (Sale Order 97 of 104)

Steam Dewaxers, 2' x 3'



Bridgeveyor Overhead System, 180 Mold Hangers, Unload & Disassembly Station

Lot #98 (Sale Order 98 of 104)

Bridgeveyor Overhead System, 180 Mold Hangers, Unload & Disassembly Station for Shell-O-Matic 140 Robot, (3) Convery Drive Units, 5HP TB Woods Inverter, Some Chain, Hanger and Track Sections, (Spare Parts Available)



Shell-O-Matic Robot, Model 140-2000, 140lb Mold Capacity, S/N 294-2, w/ Rai

Lot #99 (Sale Order 99 of 104)

Shell-O-Matic Robot, Model 140-2000, 140lb Mold Capacity, S/N 294-2, w/ Rainfall Sander



Shell-O-Matic Robot, Model 140-3000, 140lb Mold Capacity, S/N 1662, Spare P

Lot #100 (Sale Order 100 of 104)

Shell-O-Matic Robot, Model 140-3000, 140lb Mold Capacity, S/N 1662, Spare Parts for Other



Trane 225 ton Liquid Chillers, S/N U96H06330, Series R CentraVac Rotary

Lot #101 (Sale Order 101 of 104)

Trane 225 ton Liquid Chillers, S/N U96H06330, Series R CentraVac Rotary



(1996) Parker Boiler, Model NB46845, S/N 46845, 125 PSI, 3,968 lbs/hr Steam

Lot #102 (Sale Order 102 of 104)

(1996) Parker Boiler, Model NB46845, S/N 46845, 125 PSI, 3,968 lbs/hr Steam



48" Box Fan, 110V, 1 Phase

Lot #103 (Sale Order 103 of 104)

48" Box Fan, 110V, 1 Phase



McEnglevan Furnace Shells & Used Hones Oven Door

Lot #104 (Sale Order 104 of 104)

McEnglevan Furnace Shells & Used Hones Oven Door