

AUCTION

**Wednesday, May 18, 2005
Beginning at 10:30 AM EST
151 Alkier Street
Brentwood, NY 11717 USA**



1996



**INTERSTATE
LITHO CORP.**

**Complete State-of-the-Art
Printing Plant: Web Presses,
Sheet-Fed Presses, Bindery,
and Prepress**



2000

- ▶ 1996 Heidelberg M130, 22 3/4"x38", 8-Unit Double Web Press
- ▶ 1981 Hantscho Mark VI – W581 Double Web – 5-Unit, 23 9/16"x38"
- ▶ 2000 MAN Roland R704-3B, 28"x40", 10.8 mm Impressions
- ▶ 1991/1995 Muller Martini NB2-S Perfect Binding Line
- ▶ 1995 Muller Martini 335 Saddle Binder – 12 Feeder Bases
- ▶ 1991 Muller Martini 335 Saddle Binder – 8 Feeder Bases
- ▶ 1996 Tech 8000scfm Catalytic Oxidizer
- ▶ 1996 AWS 150-Ton Chilling Unit
- ▶ Additional Equipment including Digital Imagesetters, Scanners, Cameras, Gammerler 3- and 4-Knife Trimmers, Baum Folders, Die Cutter, Paper Drills, Pallet Wrappers, Shrink Wrap, Tyers/Strappers, Air Compressors, Fork & Clamp Trucks, Rolling Stock, International Tractor, Minivans, and Much More!

WEB PRESSES, SHEET-FED PRESSES



1996

1996 Heidelberg Dual Web Fed 8-Unit Offset Perfecting Printing Press



1981

1981 Hantscho Dual Web 5-Unit Offset Perfecting Printing Press



2000

2000 Man Roland Sheet-Fed 4-Color Offset Printing Press



Gammerler 4-Knife Trimmer



1984

Sakurai UV Coating Line

WEB PRESSES

1996 Heidelberg Dual Web Fed 8-Unit Offset Perfecting Printing Press – 38" Max Web x 22 3/4" Repeat (40,000 Impressions Per Hour Max), (2) Automatic Splicers, Common Roll Hoist – 3,600 LB. Capacity, Dual Web Infeed Unit, (2) Web Guides, (8) Print Units, Continuous Dampening System, Central Blending System, Water Cooled Vibratory Rollers, Air Web Turning System, Blower – 40-HP, (2) Gas Fired Dryers – 20"L, (2) 4-Roll Chill Units – 15" Diameter, Compensator and Edge Trimming Deck, Double Former/Folder, Spot Cold Glue System, Knife Temperature Control, Vertical Belt Stacker, Dual Register Control Console.

Gammerler 4-Knife Trimmer.

Applied Web Systems Water Chiller – 150 Ton Capacity.

1998 Gas Fired Catalytic Pollution Control Afterburner – 8,000scfm Capacity.

1981 Hantscho Dual Web 5-Unit Offset Perfecting Printing Press – 38" Max Web x 23 8/16" Repeat, (2) Automatic Splicers, Common Roll Hoist – 3,000 LB. Capacity, Double Infeed Unit, (2) Web Guides, (5) Print Units, Continuous Dampening System, (3) Dual Reservoir Assemblies, Water Cooled Vibratory Rollers, Water Temperature Controller, Pattern Glue Unit, (2) Gas Fired Single Pass Dryers, Register Control Scanners, Inking Control Console, Motors, Pumps, Plate Bender.

SHEET-FED PRESSES

2000 Man Roland Sheet-Fed 4-Color Offset Printing Press, 28" x 40" Max Sheet (10.84 Million Impressions Indicated), Automatic Vacuum Pile Feeder, Pre-Loader, Continuous Dampening System, Central Refrigerated Blending and Circulating System, Automatic Plate Changers, Automatic Roller and Blanket Washers, Automatic Delivery Stacker, Air Dryer – Short Wave, Water Chiller for Lamps, Anti-Offset Spray Powder System, Press Control Console, Motors, Pumps.

Sakurai UV Coating Line Consisting of 1984 Cylinder Silk Screen Press/Coater, Squeegee Sharpener, Wall Mounted Silk Screen Tilting Vacuum, and Plastic Silk Screen Spray Booth.

(2) **Hamada Sheet-Fed Single-Color Perfecting Offset Duplicators** – 12 3/8" x 17 3/4" Max Sheet Size.

** All items subject to prior sale.*

TO SCHEDULE AN AUCTION OR APPRAISAL, CALL 818.508.7034

BINDERY



1991

1991 Muller Martini Perfect Binding Line



1991

1991 Muller Martini Perfect Binding Line



1995

1995 Muller Martini 335 Saddle Stitching Line



1995

1995 Muller Martini 335 Saddle Stitching Line



1991

1991 Muller Martini 335 Saddle Stitching Line



1991

1991 Muller Martini 335 Saddle Stitching Line

BINDERY

1991 Muller Martini Perfect Binding Line with (6) 3-Pocket Feeders, 3-Pocket Feeder, Transfer Conveyor, Modular 20-Clamp Oval Perfect Binder, Cover Feeder, Roughening Unit, Shaving Unit, Side Glue Unit, Back Bone Glue Unit, Glue Heater Pot, Vacuum Waste Removal Duct and Blower, Milling Unit, Power Belt Discharge Conveyor, (2) Right Angle Transfer Conveyors, (4) Inclined Power Belt Conveyors, 1995 3-Knife Trimmer, Vacuum Trim Remover Duct and Blower, Counter/Stacker, Motors, Pumps, Controls.

1995 Muller Martini Saddle Stitching Line with (12) Feeder Bases, (6) Pocket Feeders, Cover Folder/Feeder, Multi-Head Saddle Wire Stitcher, (6) Stitching Heads, 3-Knife Trimmer, 4th and 5th Knife Attachment, Vacuum Trim Blower, Counter Stacker, Motors, Pumps, Controls.

1991 Muller Martini Saddle Stitching Line with (8) Feeder Bases, (6) Pocket Feeders, Cover Folder/Feeder, Multi-Head Saddle Wire Stitcher, (4) Stitching Heads, 3-Knife Trimmer, 4th and 5th Knife Attachment, Vacuum Trim Blower, Counter/Stacker, Portable Feeder Hoist, Motors, Pumps, Controls.

Baum-Lawson Power Paper Cutter – 52" with Power Back Gauge, Microprocessor Controlled Spacer, Main and (2) Side Air Tables.

Baum-Lawson Power Paper Cutter – 60" with Power Back Gauge, Microprocessor Controlled Spacer, Main and (2) Side Air Tables.

MBO Programmable Paper Folder – 28" x 47".

MBO Programmable Paper Folder – 28" x 40".

Miscellaneous Folder Sections Consisting of Rollaway Right Angle Folder – 16-Page with Digital Counter.

Baumfolder Paper Folder – 26" x 40" with Belt Continuous Feeder, Rollaway Right Angle Folder – 8-Page, 16-Page, 32-Page, Rollaway Multi-Belt Stacker, Electronic Glue System, Motors, Pumps, Controls, Digital Counter.

Baumfolder Paper Folder – 26" x 40" with Belt Continuous Feeder, Rollaway Right Angle Folder – 8-Page, Rollaway Multi-Belt Stacker, Motors, Pumps, Controls, Digital Counter.

Baumfolder Paper Folder – 26" x 40" with Belt Continuous Feeder, Rollaway Right Angle Folder 8-Page, 16-Page, Bolt on Belt Delivery Table, Motors, Pumps, Controls, Digital Counter.

Baumfolder Paper Folder – 26" x 40" with Belt Continuous Feeder, Rollaway Right Angle Feeder 8-Page, Rollaway Multi-Belt Stacker, Gatefold Attachment, Motors, Pumps, Controls, Digital Counter.

Baumfolder Paper Folder – 26" x 40" with Vacuum Pile Feeder with Belt Delivery Table.

Baumfolder Paper Feeder – 17 1/2" x 22 1/2" with Friction Feeder with Right Angle Folder, Motors, Pumps, Controls, Digital Counter.

Baumfolder Multi-Spindle Heavy Duty Paper Drill, (12) Spindles, Automatic Chain Indexing System, (2) Vacuum Waste Removal Systems, Drill Sharpener.

Challenge Three-Spindle Paper Drill.

Sergeant L-Sealer Shrink Wrapper with Shrink Tunnel.

Heidelberg Platen Letter Press, Die Cutter – 13" x 18" with Vacuum Pile Feeder.

Kirk-Rudy 1996 Tabbng Machine with Feeder Base.

Squeegee Sharpener – 48".

Miscellaneous Equipment in Storage: Rollaway Right Angle Folder, Bench Perf/Slit/Score Machine – 30"; Portable Perf/Slit/Score Machine – 18"; Single Head Wire Stitcher, Single Round Corner Cutter, Spiral Binding Punch, Binding Punches, (2) Foot Operated Riveters.

Hanngata 1988 Automatic L-Sealer with Electric Shrink Tunnel and Vacuum Scrap Removal.

(2) **Automatic Plastic Strapping Machines.**

1998 Automatic Plastic Strapping Machine.

(2) **Top & Bottom Case Sealers.**

** All items subject to prior sale.*

PREPRESS, FORKLIFT TRUCKS, MATERIAL HANDLING



2001 CREO/Scitex Computer-to-Plate System



Wall Mounted Silk Screen Tilting Vacuum



Plastic Silk Screen Spray Booth



2000 LPG Forklift Truck



1991 LPG Forklift Truck



1997 LPG Clamp Truck



Pallet Stretch Wrapper



Heavy Duty Pallet Rack



Multi-Spindle Heavy Duty Paper Drill



Paper Drill



Challenge 3 - Spindle Paper Drill



Strapper



Heavy Duty Paper Drill



Shrink Tunnel



Sakurai UV Coating Line



1991 Trimmer & Stacker For Perfect Binder



1995 Muller Martini 360 Trimmer



1995 Muller Martini Apollo Counterstacker



1991 Muller Martini 251 Trimmer

PREPRESS

2001 CREO/Scitex Computer-to-Plate System with Print Console, Proof Option, Impose Rip, (2) Power Conditioners and Accessories.

1999 Scitex Digital Laser Imagesetter

Linotype-Hell Digital Laser Imagesetters

Hewlett-Packard Digital Color Proof Printer

Dainippon Color Scanner

Kodak Color Proof Printer

Wall Mounted Silk Screen Tilting Vacuum, Frame 55"x 70" with Portable Exposure Lamp, Power Supply, Digital Light Integrator.

Plastic Silk Screen Spray Booth with Back Light and Pressure Washer.

FORKLIFT TRUCKS & MATERIAL HANDLING

2000 LPG Forklift Truck #D187V18229X – 3,550 LB. Cap., 3-Stage Mast – 189" Max Lift, Cushion Tires, Overhead Guard with Sideshafter.

1991 LPG Forklift Truck #GX230-0342-6380KOF – 4,500 LB. Cap., 3-Stage Mast – 183" Max Lift, Cushion Tires, Overhead Guard.

1997 LPG Clamp Truck #D004D04744U – 8,850 LB. Cap., 3-Stage Mast – 172" Max Lift, Cushion Tires, Overhead Guard with Roll Clamp Attachment.

Pallet Stretch Wrapper with Diamond-Plate Turntable – 48" x 48".

(2) **Pallet Stretch Wrappers** with Diamond-Plate Turntable – 60" Diameter.

Miscellaneous Plant Equipment Consisting of Heavy Duty Pallet Rack, Metal Adjustable Shelving, Bench Fan Dial Platform Postage Scale – 70 LB. Cap., Manual Pallet – Skid and Platform Trucks, Portable Safety Ladder, Self-Dumping Hoppers, String Tyers, Ladders, Tape Shooters, Stencil Cutter, Portable Steel Strapping Set, Gasoline Push Mower – 22" and 35-HP, Metal Bindery Trucks, Metal Carts, Assistant Workbenches, Wood/Steel Skids, Chairs and Stools, Time Clock, Card Racks, Palm Scanner, Vertical Shaft Ink Mixer, AC/DC Welder – 295 AMP, Storage Cabinets, Overhead Inspection Lights, Fans, Portable Paper Jigger, Portable Shop Vacuums.



About BIDITUP AUCTIONS & APPRAISALS WORLDWIDE

BIDITUP is a global leader in asset conversion and provides auction, real estate, and appraisal services to a comprehensive array of markets. Services feature onsite auctions, live BidCast webcast auctions in real time, and online auctions. BIDITUP sells individual or aggregated assets across the globe, 24 hours a day, seven days a week. BIDITUP is headquartered in Los Angeles, California, and has over 20 years of experience. Whether selling an individual asset, inquiring as to the value of business assets, or liquidating an entire operation, BIDITUP prides itself on matching buyers and sellers to maximize value. More information can be found online at www.BIDITUP.com or at (818) 508-7034.

** All items subject to prior sale.*

TO SCHEDULE AN AUCTION OR APPRAISAL, CALL 818.508.7034

AUXILIARY, VEHICLES, OFFICE FURNITURE, FIXTURES, EQUIPMENT, COMPUTERS

AUXILIARY

Compressed Air System Consisting of Ingersoll-Rand Package Type Rotary Screw Air Compressor – 125 HP; **Ingersoll-Rand Refrigerated Compressed Air Dryer; Rotary Screw Air Compressor** – 50-HP; (2) **Horizontal Tank Mounted Air Compressors** – 15-HP; **Package Type Rotary Screw Air Compressor** – 60-HP, (2) **Refrigerated Compressed Air Dryers; Aftercooler, Vertical Receiving Tank.**

- (2) **Hydraulic Trash Compactors** with Cyclone Separators.
- (2) **Horizontal Tank Mounted Air Compressors** – 25-HP.

VEHICLES

- 1995 Chevrolet Astro Minivan** VIN #1GCDM19W9SB167824.
- 1994 International 810 Tractor** with Diesel Engine VIN #1HSHBAZXNRH589470.
- 1993 Dodge Caravan Minivan** VIN #2B4GH2530PR194290.

OFFICE FURNITURE, FIXTURES, EQUIPMENT, COMPUTERS

Desks, Chairs, Tables, File Cabinets, Sofas, Modular Workstations, Bookcases, Conference Table, Reception Station, Copiers, Fax Machines, Typewriters, Calculators, Refrigerator, Pedestal Fans, Computers and Peripherals.



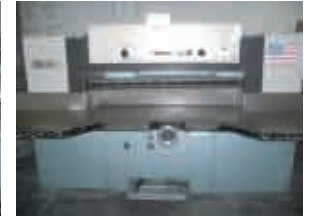
1991
1991 Muller Martini Apollo Counterstacker



MBO 26"x40" Programmable Paper Folder



MBO 28"x47" Programmable Paper Folder



Lawson 60" Paper Cutter



Ingersoll-Rand Rotary Screw Air Compressor



Ingersoll-Rand Compressed Air Dryer



Digital Proof Printer



Digital Imagesetter



Fuji Processor



38" Plate Processor

Need An Appraisal?

Call 818.508.7034



1995
1995 Chevrolet Astro Minivan



1993
1993 Dodge Caravan Minivan



1994
1994 International 810 Tractor



Hamada Sheet-Fed Perfecting Offset Duplicator



Shrink Wrap Former



Plastic Strapper



Scissor Lift



Plastic Wrap Former



Assorted Tools



Assorted Tools



Assorted Tools



Assorted Tools



Standing Tool Chest

** All items subject to prior sale.*

AUCTION

Wednesday, May 18, 2005
Beginning at 10:30 AM EST

PREVIEW

Tuesday, May 17, 2005
9 AM to 4 PM EST

LOCATION

151 Alkier Street
Brentwood, NY 11717 USA

LODGING

Holiday Inn Express
(Approx. 2 miles from Site)
2050 Express Drive S
Hauppauge, NY USA
631.348.1400

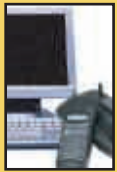
Wyndham Hotel
(Approx. 3 miles from Site)
1717 Vanderbilt Mtr. Pkwy.
Hauppauge, NY USA
631.232.9800

Howard Johnson
(Approx. 3.3 miles from Site)
450 Moreland Road
Commack, NY USA
631.864.8820

TERMS & CONDITIONS

Sale Conducted by: BIDITUP, Subject to our customary terms of sale, (Available at the auction site on the day of the sale), and any and all amendments and modifications announced by the auctioneer at the time of the auction. The auctioneer and seller make no warranties or guarantees, expressed or implied, as to the defects in or the correctness or accuracy of the descriptions in any advertising of any item(s) being auctioned and will not be responsible for any advertising discrepancies or inaccuracies of any kind. All items sold will be on an "AS IS", "WHERE IS", and "WITH ALL FAULTS", basis "WITHOUT EXCEPTION" and "WITH REMOVAL AT BUYER'S RISK AND EXPENSE". AUCTIONEER AND SELLER MAKE NO WARRANTIES OR GUARANTEES OF ANY KIND, EXPRESSED OR IMPLIED AS TO THE NATURE, QUALITY, VALUE OR CONDITION OF THE ITEM(S) BEING AUCTIONED OR ITS (THEIR) SUITABILITY FOR ANY USE. AUCTIONEER AND SELLER EXPRESSLY AND SPECIFICALLY DISCLAIM WITHOUT LIMITATION ANY WARRANTY OF MERCHANTABILITY OR FITNESS FOR A PARTICULAR PURPOSE. AUCTIONEER SHALL NOT BE LIABLE FOR SPECIAL, CONSEQUENTIAL OR INCIDENTAL DAMAGES. It shall be the buyer's obligation to verify information and descriptions of property prior to sale. BIDITUP, and its advertising agency assume no liability for errors or omissions in this brochure. The auctioneer does not warrant the age, accuracy, genuineness, authenticity, description, weight, count or measure of any listings specified herein. Although it is not likely, auction sales are subject to cancellation or postponement, and sometimes items are withdrawn from the sale, kindly contact BIDITUP, prior to travel as there will be no reimbursements. On the day of the sale, all successful bidders must immediately pay the full purchase price in cash, certified funds, cashiers check, wire transfer or company check with a letter from the buyer's bank guaranteeing unqualified payments to BIDITUP. This letter is valid until 30 working days after the auction sale. Company checks without letter from bank guaranteeing unqualified payment will not be accepted. The failure to make payment promptly shall be considered default and each lot or lots so purchased will be placed for resale. The buyer must pay the total invoice price for all the lots purchased before any removal can begin. All buyers must pay applicable sales tax (unless evidence of exemption is provided to auctioneer's satisfaction). Buyers are responsible for the transportation, associated costs and risks involved in the removal of purchased item(s). Certain items may contain residual chemicals and/or hazardous materials. The purchaser(s) hereby indemnify and hold harmless the auctioneer and seller from any and all damages, claims or liability from any injuries to persons or property of any type whatsoever caused during the sale of, during the removal, or during use or operation of the purchased item(s). If you are unable to attend, please contact us regarding placing a proxy bid. PLEASE NOTE: ALL SALES ARE SUBJECT TO A BUYER'S PREMIUM.

** All items subject to prior sale.*

WEBCAST

Can't attend the auction in person? You can participate and bid in real time via the Internet. Preview assets with detailed digital photos, lot catalogs, and in-depth descriptions. For more information, visit www.BIDITUP.com. Please note, all webcast participants must submit a 25% deposit and signed registration forms no later than 24 hours before a sale.

UPCOMING AUCTIONS

**Excess Assets of
RUTHERFORD CAN MACHINERY
Business Moving Operations Out of State**
Thursday, May 19, 2005
East Rutherford, NJ USA

**Assets No Longer Required in Continuing Operations
THE ROBERT BOSCH TOOL CORPORATION
State-of-the-Art Saw Blade Manufacturer**
Thursday, May 26, 2005
Leitchfield, KY USA

DIRECTIONS

From Long Island MacArthur Airport (ISP) – Ronkonkoma, NY (Approx. 8 Miles From Auction Site)

Start out going south on Arrival Avenue/Johnson Avenue toward Airport Road. Continue to follow Johnson Avenue for .5 miles. Take the RT-454 West ramp toward I-495. Turn slight right onto NY-454/Veterans Memorial Highway for 4.1 miles. Turn left onto East Suffolk Avenue/CR-100 West for 2.6 miles. Turn left onto Islip Avenue/NY-111 for .2 miles. Turn right onto Alkier Street for .3 miles. End at 151 Alkier Street, and watch for auction signs.

From John F. Kennedy Intl. Airport (JFK) – Jamaica, NY (Approx. 38 Miles From Auction Site)

Start out going east and turn slight left. Turn slight left to take the ramp toward Airport Exit/Other Terminals. Stay straight to go onto JFK Expressway for 2.2 miles. Merge onto Belt Parkway East toward Eastern Long Island for 3.5 miles. Take Belt Parkway East, which becomes Southern State Parkway/Southern Parkway East for 29.4 miles. Take the RT-111 exit, Exit 43N, toward Hauppauge. Merge onto Islip Avenue/NY-111 for 2 miles. Turn left onto Alkier Street for .3 miles. End at 151 Alkier Street, and watch for auction signs.

From La Guardia Airport (LGA) – Flushing, NY (Approx. 40 Miles From Auction Site)

Start out going northeast on La Guardia Road. Turn slight left toward Terminal A/Marine Air Terminal/Rental Car Returns. Turn slight left onto Central Terminal Drive. Take the Airport Exit ramp. Stay straight to go onto 94th Street. Merge onto Grand Central Parkway East toward Eastern Long Island for 2.8 miles. Take the I-495/Long Island Expressway exit, Exit 10, toward Midtown Tunnel/Eastern Long Island. Take the I-495 East/Long Island Expressway exit on the left toward Eastern Long Island. Take the I-495 East/Long Island Expressway exit toward Eastern Long Island. Merge onto Long Island Expressway/I-495 East via the exit on the left for 33.7 miles. Take Exit 55 toward CR-67/Motor Parkway/Central Islip. Merge onto Express Drive South. Turn right onto Long Island Motor Parkway/Motor Parkway/CR-67. Turn slight right onto Calebs Path for 1.2 miles. Turn right onto Joshuas Path/NY-111 South. Continue to follow NY-111 South for .3 miles. Turn right onto Alkier Street for .3 miles, end at 151 Alkier Street, and watch for auction signs.