

AUCTION

Tuesday, May 02, 2006
Beginning at 10:00 AM EDT
500 North Rufe Taylor Rd.
Greeneville, TN 37744, USA



WEBCAST
Can't attend the auction in person?
Bid live on www.BIDITUP.com

COMPLETE ALUMINUM PERMANENT MOLDING AND DIE CAST FACILITY INCLUDING MACHINE SHOP & REAL ESTATE

GreenEville Casting Inc.



Hall HM3 Platen Tilt Pour Permanent Molding Machine



Propane System



Gudgeon Thermal Reclamation System

- ▼ RECLAIM SYSTEMS-THERMAL
- ▼ RECLAIM SYSTEMS-MECHANICAL
- ▼ MOLDING MACHINES-PERMANENT
- ▼ DIE CAST MACHINES
- ▼ TRIM PRESSES
- ▼ CLEANING MACHINES
- ▼ PROPANE SYSTEM
- ▼ FURNACES
- ▼ SAWS AND GRINDERS
- ▼ CASTING IMPREGNATION SYSTEM
- ▼ CORE COATING SYSTEM
- ▼ CORE MACHINES
- ▼ CORE KNOCKOUTS
- ▼ CORE, GAS DELIVERY SYSTEMS
- ▼ SAND DELIVERY SYSTEMS
- ▼ CORE DELIVERY SYSTEM
- ▼ SILOS
- ▼ TRANSPORTERS
- ▼ DUST COLLECTORS AND SCRUBBERS
- ▼ LABORATORY AND INSPECTION
- ▼ CORE RACKS
- ▼ CONVEYORS, CORE DEFINING
- ▼ CONVEYORS-OSCILLATING
- ▼ CONVEYORS-STEEL FLIGHT
- ▼ AIR DRYERS
- ▼ DROSS PRESS

- ▼ MISCELLANEOUS
- ▼ HORIZONTAL BORING MILL
- ▼ VERTICAL BORING MILLS
- ▼ HORIZONTAL MACHING CENTER
- ▼ VERTICAL MACHINING CENTERS
- ▼ CNC LATHES
- ▼ CNC TAPPING CENTERS
- ▼ OBI PRESSES
- ▼ 4-POST HYDRAULIC PRESS
- ▼ EDMS
- ▼ UNIVERSAL GRINDER
- ▼ VERTICAL TRACER MILL
- ▼ RADIAL DRILL
- ▼ ENGINE LATHES
- ▼ VERTICAL MILLS
- ▼ HYDRAULIC SURFACE GRINDERS
- ▼ VERTICAL BAND SAWS
- ▼ WELDING
- ▼ BLAST BOOTH
- ▼ WASH SYSTEM
- ▼ MATERIAL HANDLING

- ▼ AIR HANDLING
- ▼ ROLLING STOCK
- ▼ INSPECTION & LAB
- ▼ MISCELLANEOUS
- ▼ REAL ESTATE TO BE AUCTIONED AT 1:00 PM EDT (SEE PAGE 11 FOR DETAILS)

RECLAIM SYSTEMS-THERMAL, RECLAIM SYSTEMS-MECHANICAL, MOLDING MACHINES-PERMANENT

FOUNDRY AND DIE CAST EQUIPMENT

RECLAIM SYSTEMS, THERMAL

(2) 1997 Gudgeon Thermal Reclamation System, MDL. TF6000 3 TPH, Each Equipped with 2 Blowers, Xycom Touch Panel with SLC5/03 PLC Controls, Motivated Engineering MDL. VI4S Vibro Lift Screener, MaCawber MDL. 3/4 Sand Transporter with SLC500 PLC Controls, Air MDL. IE-29-CWUB-ARRT-9 19,000 CFM Pulse Type Dust Collector with 60 HP Blower and Motor and Controls, Common Water System with Tanks, Pumps and (2) Marley Cooling Towers, Common Air System with Sullair MDL. LS20-100-60HZ-ACAC 100 HP Screw Type Air Compressor, s/n 003-109770, Common Air Dryer with Arrow Pneumatics MDL. 3514-4 Refrigerated Air Dryer, s/n TJ250 Rated at 500 CFM, 3 HP, Systems, s/ns 1091, 1092

RECLAIM SYSTEMS, MECHANICAL

Complete Mechanical Reclaim System, Equipped with G/K MDL. VM-27 Vibramill, s/n C5019-1 with Drives, 24" X Approx. 80" Flat Belt Conveyor with Drive, 1997 New London MDL. 590-36-30" Cam Belt Conveyor, s/n 97-43902 with Drive, 24" X Approx. 15' Flat Belt Conveyor with Drive, 1997 Didion MDL. LC15 Rotary Lump Crusher, 15 HP, s/n DM-508, Macawber MDL. 8/8 8" Sand Transporters, s/n 1375, with Controls, MaCawber MDL. 4/4 Sand Transporter, s/n 604 with Controls Return Sand Bucket Elevator Approx. 15' with Drive, 24" X Approx. 26 Cam Belt Conveyor with Drive, 36" X 60" Cross Belt Magnetic Belt Conveyor with Drive

MOLDING MACHINES, PERMANENT

(3) 2004 Hall HM3 Platen Tilt Pour Permanent Molding Machine, MDL. HM3 28-1/2" X 42", Each Equipped with 15 HP Hydraulic System, s/n 416804, 337904, 417004 with Micrologic PLC Controls and Panelview 550, Machine, s/n 337704, 416904, 337804

Rebuilt 2004 Hall HM3 Platen Tilt Pour Permanent Molding Machine, MDL. HM3SW 28-1/2" X 42", Equipped with Hydraulic System and Controls, s/n 1034

CPC Cam Carrier 6-Station Permanent Molding Turntable, Equipped with (6) 4-Post Hydraulic Horizontally Parted Static Casters, Each 77" Left to Right and 40" Front to Back Opening, Quick Change Clamping System, Hydraulic Tilting Lower Section, 100 HP Hydraulic Turntable System, Load and Unloading Stations, Core Setting Station, Platform, Allen Bradley PLC2/05 PLC Controls, Rotary Degasser

Combustion Engineering 6-Station Permanent Molding Turntable, Equipped with 6-Cylinder Head Casting Machines, 100 HP Hydraulic Turntable System, Load and Unloading Stations, Core Setting Station, Platform, Allen Bradley Mini Plc 2/05 PLC Controls

(24) **Stahl Tilt Pour Permanent Molding Machine**, MDL. 1824 Each Equipped with 10 HP Unitol Hydraulic System and Controls, Most Equipped with Osterizer Casting System

(2) **Seaton SSK Static Cast Permanent Molding Machine**, Horizontal, 4-Post, 24" X 38" Between Posts Each Equipped with Bottom Mold Ejection System, 10 HP Hydraulic System with Mitsubishi PLC Controls

(9) **Fata Cylinder Head Permanent Molding Machines**, with Controls

KNOW OF ANY FACILITIES CLOSING, MOVING OR DOWNSIZING?

Call 818.508.7034



1997

2-AVAILABLE



Views of Gudgeon TF6000 3TPH Thermal Reclamation System



Didion Lump Crusher



GK VM27 Vibra Mill



Macawber Transporters

FOR LEASE & FINANCE SERVICES - BIDITUP CAPITAL CORPORATION

CALL 818.508.7034

DIE CAST MACHINES, TRIM PRESSES, CLEANING MACHINES

DIE CAST MACHINES

HPM 1200-Ton Cold Chamber Aluminum Die Cast Machine, Remanufactured by Die Cast Press in 2000, Equipped with Motorized Die Height, Hydraulic Bumper Plate Ejection System, Variable Shot Position (Inserted) with Hydraulic Adjustment, Three Core Circuits, Close Coupled All Piston Bottle Shot System, Machine Cell Also Includes: Rimrock Automatic Ladle, Rimrock Reciprocating Die Sprayer and Dry Hearth Machine, Melting/Holding Furnace, 50 Ton Four Post Hydraulic Vertical Trim Press, Allen Bradley SLC 5/03 Controls

(4) 1984 Prince 850-Ton Cold Chamber Aluminum Die Cast Machine, MDL. 836CCA, Dual Automatic Tie Bar Pullers, Prince Binary I Shot System, 36-1/2" Tie Bar Clearance, Hydraulic Bumper Plate Ejection System, Hydraulic Motorized Die Height Adjustment, (3) Core Circuits and Adjustable Shot Positions, Machine Cell Includes: Rimrock Automatic Ladle, Rimrock Reciprocating Die Sprayer and Dry Hearth Machine Melting/Holding Furnace, Four Post Hydraulic Vertical Trim Press, Allen Bradley PLC Controls

(3) 1984 Prince 650-Ton Cold Chamber Aluminum Die Cast Machine, MDL. 629CCA, Equipped with Automatic Tie Bar Puller, Prince Binary I Shot System, 29-1/2" Tie Bar Clearance, Hydraulic Bumper Plate Ejection System, Hydraulic Motorized Die Height Adjustment, Three (3) Core Circuits and Adjustable Shot Positions, Machine Cell Includes: Rimrock Automatic Ladle, Rimrock Reciprocating Die Sprayer and Dry Hearth Machine Melting/Holding Furnace, Four Post Hydraulic Vertical Trim Press, Allen Bradley PLC Controls

(2) 1977 Prince 650 Ton Cold Chamber Aluminum Die Cast Machine, MDL. 629CCA, Equipped with Prince Olmsted Shot System, 29-1/2" Tie Bar Clearance, Hydraulic Bumper Plate Ejection System, Motorized Die Height Adjustment, Two (2) Core Circuits and Adjustable Shot Positions, Machine Cell Includes: Rimrock Automatic Ladle, Rimrock Reciprocating Die Sprayer and Dry Hearth Machine Melting/Holding Furnace, Four Post Hydraulic Vertical Trim Press, Allen Bradley PLC Controls

TRIM PRESSES

Keystone 50-Ton, 48" X 24-1/2" TBC, 34" Daylight, 18" Stroke, 16" Shut Height, ASR, Light Curtains, T-Slots, GC#207

K.R. Wilson 50-Ton, 47-1/2" X 29" TBC, 48" Daylight, 28" Stroke, 20" Shut Height, Pneu. Safety Bar, Light Curtains GC#138

Keystone 50-Ton, 40-1/2" X 24-1/2" TBC, 32" Daylight, 16" Stroke, 16" Shut Height, ASR, Light Curtains, Drilled and Tapped, GC# 234

Modern 50-Ton, 47" X 29" TBC, 42" Daylight, 24" Stroke, 18" Shut Height, Pneu. Safety Bar, Light Curtains, GC# 136

K.R. Wilson 50-Ton, 48" X 24-1/2" TBC, 30" Daylight, 15" Stroke, 15" Shut Height, T-Slots, Light Curtains, UPACTING, GC# 220

Keystone, 28" X 24" TBC, 36" Daylight, 20" Stroke, 16" Shut Height, ASR, Light Curtains, T-Slots, Pneu. Safety Bar, GC# 274

K.R. Wilson, 28-Ton, 36" X 24" TBC, 34" Daylight, 16" Stroke, 18" Shut Height, ASR, Light Curtains, T-Slots, Pneu. Safety Bar, Drilled and Tapped, GC# 229

K.R. Wilson, 28-Ton, 32-1/2" X 26-3/4" TBC, 22" Daylight, 12" Stroke, 10" Shut Height, Pneu. Safety Bar, Light Curtains, Drilled and Tapped, GC# 143

CLEANING MACHINES

1996 Goff Hanger Type Blast Cleaning Machine, MDL. 3672SP, Equipped with (2) 7.5 HP Direct Drive Shot Wheels, Shot Return System and Controls, s/n 96731-50-4982

(4) 1997-1995 Goff Hanger Type Blast Cleaning Machines, MDL. 2460SP, Each Equipped with (2) 7.5 HP Direct Drive Shot Wheels, Shot Return System and Controls, s/ns 97461-50-5200, 95461-50-4571, 95461-50-4589, 94461-50-4149

(2) Wheelabrator 7-Cu Ft Tumbblast Cleaning Machines, Each Equipped with Steel Flights, Shot Return System and Controls, s/ns A124962, A124966



Hall HM3 Permanent Molding Machine



Stahl 1824 Permanent Molding Machine



Fata Molding Machine



Seaton Molding Machine

LEASE/FINANCING AVAILABLE DIRECT FROM

BIDITUP
Capital Corporation

**Can't make it to the auction in person?
Bid live online at www.BIDITUP.com**

CLEANING MACHINES, PROPANE SYSTEM, FURNACES, SAWS AND GRINDERS

CLEANING MACHINES (CONTINUED)

BCP Room Blast Cleaning Machine, 12' X 14' X 12' High Room
Equipped with Shot Return System, Controls, Roll Up Door

Pangborn Spinner Hanger Monorail Blast Cleaning System,
Equipped with Monorail System with Drive, Blast Cabinet with Shot
Wheels and Shot Return System and Controls

1995 Alpheus MDL. PLT Miniblast CO2 Blaster, s/n 66692

1997 Alpheus MDL. SDI-5 CO2 Blaster, s/n 67950

Alpheus Series 300 CO2 Pelletizer with Tank

PROPANE SYSTEM

New 1990 Complete Propane System, Including (4) 30,000 Gallon
Propane Tanks, Ely Energy Vaporizer, Mixing Room, Sullair MDL. 20-
150L 150 HP Screw Type Air Cooled Air Compressor, s/n 003-81783,
1821 Hours

FURNACES

**1997 Lindberg MPH Gas Fired Dry Hearth Melting and Holding
Furnace**, MDL. 62-ACM-1500, 1500# Per Hour, Equipped with Gas
System, Blower and Motor, (2) Burners, Honeywell Controls with
Digital Readouts, s/n R-8087

1995 Schaeffer Gas Fired Melting and Holding Furnace, 1000#
Per Hour, Equipped with Gas System, Blower and Motor, (2) Burners,
Dry Hearth, Honeywell Digital Readouts, s/n 7-0445-0

**(3) 1986 Schaefer Gas Fired 70,000# Melting and Holding
Furnaces**, Each Equipped with Gas System, Blower and Motor,
Honeywell Digital Readouts, Portable Vibratory Feed Conveyor,
Air Doors, s/ns 2-1971-0, 2-1972-0

**(14) Lindberg Gas Fired Dry Hearth Melting and Holding
Furnace**, Rated at Approx. 12,000# Holding Capacity, Equipped
with Air Door, Gas System with Blower and Motor, (2) Burners,
Mitsubishi PLC Controls

1995 Wedron Portable Flux Degassing System, MDL. FF05,
s/n 144133000

Numerous Molten Metal Pumps

SAWS AND GRINDERS

GCI Automatic Saw System, Equipped with 28" X 28" Opening,
Hydraulic Outer and Inner Doors, Light Curtain, Casting Shuttle
System and Clamping System, (2) 20 HP Saws and 10 HP Hydraulic
System, Allen Bradley Micrologic PLC Controls

GCI Automatic Saw System, Equipped with 24" X 34" Opening,
Hydraulic Outer and Inner Doors, Light Curtain, Casting Shuttle
System and Clamping System, 20 HP Saw and 5 HP Hydraulic
System, Allen Bradley Micrologic PLC Controls

Ransohoff Automatic Saw System, Equipped with 40" X 40"
Opening, Hydraulic Outer and Inner Doors, Light Curtain, Casting
Shuttle and Clamping System, 75 HP Saw and 15 HP Hydraulic
System, Allen Bradley Mini PLC 2/16 Controls Used For Viper Oil Pan,
s/n H1999

(2) Automatic Saw System, Each Equipped with 30" X 30"
Opening, Hydraulic Outer and Inner Doors, Light Curtain, Casting
Shuttle System and Clamping System, 1-75 HP Saw and 5 HP
Hydraulic System, Allen Bradley PLC Controls

(2) Custom Built Automatic Saw Systems, Each Equipped with
28" X 34" Opening, Hydraulic Outer and Inner Doors, Light Curtain,
Casting Shuttle and Clamping System, (3) Gilman Series 6500 Saws
and (3) Gilman Series 6500 Retractable Saws, 25 HP Hydraulic
System, Allen Bradley SLC5/04 PLC Controls

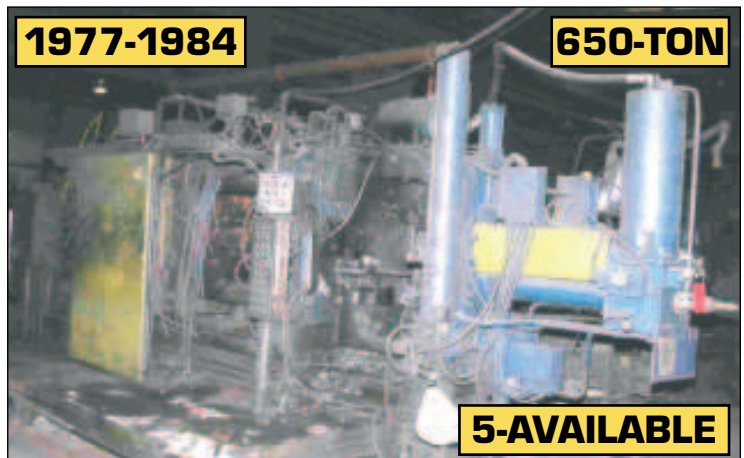
Custom Built Automatic Saw System, Equipped with 28" X 34"
Opening, Hydraulic Outer and Inner Doors, Light Curtain, Casting
Shuttle and Clamping System, 25 HP Left Side Saw with Raising and
Lowering, 25 HP Right Side Saw with Raising and Lowering, 25 HP
Hydraulic System, Allen Bradley Micrologic PLC Controls



HMP 1200-Ton Cold Chamber Aluminum Die Cast Machine



Prince 850-Ton Cold Chamber Aluminium Die Cast Machine

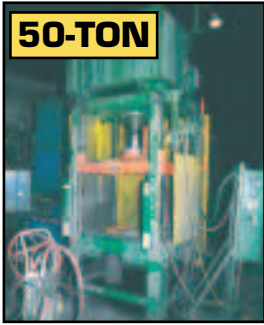


Prince 650-Ton Cold Chamber Aluminum Die Cast Machine

TO SCHEDULE AN AUCTION OR APPRAISAL

CALL 818.508.7034

CLEANING MACHINES, PROPANE SYSTEM, FURNACES, SAWS AND GRINDERS



Modern Trim Press



KR Wilson Trim Press



Keystone Trim Press



KR Wilson Trim Press



Keystone Trim Press



Goff 3672 SP Blast Machine



Wheelabrator Tumbler



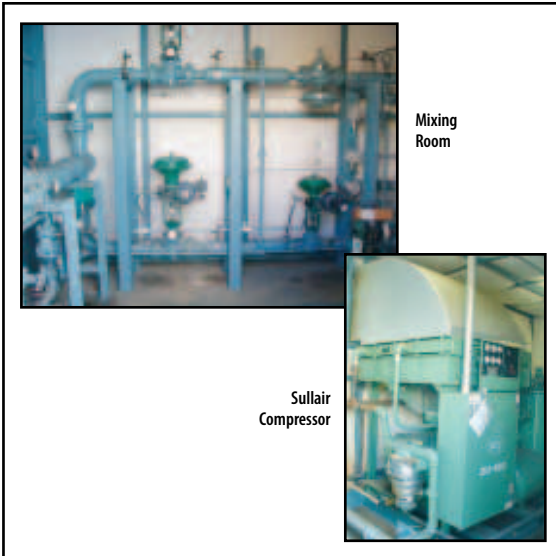
Goff 2460 SP Blast Machine



Alpheus Blast



Alpheus CO2 Blast



Mixing Room

Sullair Compressor



GCI 28" X 28" Saw



GCI 24" X 34" Saw



Lindberg MPH Furnace



Lindberg Furnace

DIRECTIONS

From: Mc Ghee Tyson Airport, Knoxville, TN (TYS)
(Approx. 86 Miles From Auction Site)

Take the I-29 North toward Knoxville/Oak Ridge. US-29 North becomes Airport Hwy. Airport Hwy becomes Alcoa Hwy. Bear Right onto I-40 East toward Ashville/Lexington. Take Left exit #421 onto I-81 North. Take exit #23/US-11E onto Robert F Smith Parkway [US-11E] toward Greenville/Mosheim. Continue to follow US-11E North. Turn Left on N Rufe Taylor Rd. Arrive at 500 N Rufe Taylor Rd., Greenville. Auction Site is on the right, look for signs.

LODGING

The Jameson Inn

3160 E Andrew Johnson Hwy, Greenville, TN423-638-7511

Comfort Inn

1790 E Andrew Johnson Hwy, Greenville, TN423-639-4185

General Morgan Inn & Conference Center

111 N Main St., Greenville, TN423-787-1000

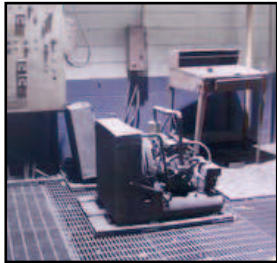
BIDITUP AUCTIONS AND APPRAISALS WORLDWIDE

www.BIDITUP.com

CASTING IMPREGNATION SYSTEM, CORE COATING SYSTEM, CORE MACHINES, CORE KNOCKOUTS, CORE-GAS DELIVERY SYSTEMS, SAND DELIVERY SYSTEMS, CORE DELIVERY SYSTEM



Casting Impregnation System



CASTING IMPREGNATION SYSTEM

Complete Imprex Impregnation System, Equipped with Imprex MDL. S60x80, 60" X 80" Vacuum Vessel, s/n 748, (2) 96" X 96" X 48" Deep Dip Tanks with Power Basket System, 96" X 96" X 48" Deep Tank with Spin and Lift Device, Related Pumps, Chillers, 5 HP Air Compressor, Overhead Monorail System and Controls

CORE COATING SYSTEM

Complete Shell-O-Matic Core Wash Coating System, Equipped with (2) 5' X 5' X 2-1/2' Deep Stainless Steel Dip Tanks with Circulating Pumps, (2) Shell-O-Matic MDL. 450 5-Axis Dipping Robots, s/n 642-1M and 642-3 with Controls, 14-Station Pallet Conveyor System with Drive, Loading and Unloading Stations, 4' X 20' Electric Drying Tunnel Curing Oven, Allen Bradley PLC2-30 Controls, Technical System MDL. CA2FF9 Chiller, s/n 9085029665 with Controls

CORE MACHINES

B&P Hydraulic Cold Box Core Machine, MDL. CB30CC, Equipped with Gaylord MDL. LLC-G75 Gas Generator, Pickoff, Hydraulic System and SLC5-03 PLC Controls

(8) B&P Cold Box Core Machines, MDL. CB30CC, Each Equipped with Gaylord MDL. LLC-G75 Gas Generator, Pickoff, and Mini PLC 2/05 Controls, s/ns 1108-7702, 1112-7702, 1134-8410, 135-8502

(9) B&P Cold Box Core Machines, MDL. CB18CC, Each Equipped with Gaylord MDL. LCC-G75 Gas Generator, Pickoff, and Mini PLC 2/05 Controls, s/ns 132-8503, 131-8503, 130-8402, 126-8010, 112-7702, 119-7811

CORE KNOCKOUTS

(3) Twin Station CEC Core Knockout Enclosures, Each Equipped with Hershhal MDL. HP 76 Core Knockout Head and Sand Discharge Bottom

(2) Roberts 8-Station Rotary Core Knockout Enclosures, Equipped with Hydraulic Doors and Rotary Drives, Hershhal MDL. HP76 Knockout Heads and Controls

Roberts 10-Station Rotary Core Knockout Enclosure, Equipped with Hydraulic Doors and Rotary Drive, Hershhal MDL. HP76 Knockout Heads and Controls

(2) 1991 US Industries Twin Station Core Knockout Enclosures, Each Equipped with Hydraulic System, Doors, s/n OJ012891-1

(6) Single Station Custom Core Knockout Enclosures, with Hershhal MDL. HP76 Knockouts

CORE, GAS DELIVERY SYSTEMS

(3) Gaylord MDL. LCC-P55 Gas Delivery Systems, s/n 031596175

SAND DELIVERY SYSTEMS

Overhead Sand Delivery System, Equipped with Receiving Hopper and Supports, Bucket Elevator with Drive, Dependable MDL. MM500 SA3B Continuous Mixer with Pumps and Controls, 18" X Approx. 150' Sand Delivery Belt Conveyor with Drive, CE Cast ECH Electric Sand Heater with Controls, CE Cast Fluidized Bed Sand Heater with Blower, Motor and Controls

Overhead Sand Delivery System, Equipped with Receiving Hopper and Supports, Redford Electric Sand Heater with Controls, Redford MDL. Mark II 500# Batch Mixer, s/n 5827 with Controls, 18" X Approx. 100' Sand Delivery Belt Conveyor with Drive, Hopper and Supports

Overhead Sand Delivery System, Equipped with Receiving Hopper and Supports, Dependable MDL. MM500 SA3B 500# Continuous Mixer with Pumps and Controls

CORE DELIVERY SYSTEM

Overhead 456 Continuous Chain System Equipped, with Drives, 456 Chain with Curves and Supports, 4-Tier Trays



View of Shellomatic Core Wash System Mdl. 450



Roberts Rotary Knockouts



CEC Core Knockouts



View of Silos



Farr 2-Compartment Dust Collector

REAL ESTATE - To be Auctioned at 1PM
24.5 Acres in Greeneville, TN
(See Page 11 For More Information)

More Real Estate Opportunities - For Sale / Lease
127,000 Sq Ft Steel Frame Bldg on 13 Acres Located in
Caruthersville, MO (Visit www.BIDITUP.com For More Info.)

FOR LEASE & FINANCE SERVICES - BIDITUP CAPITAL CORPORATION

CALL 818.508.7034

SILOS, TRANSPORTERS, DUST COLLECTORS AND SCRUBBERS, LABORATORY AND INSPECTION, CORE RACKS, CONVEYORS, CORE DEFINING, CONVEYORS-OSCILLATING, CONVEYORS-STEEL FLIGHT, AIR COMPRESSORS AND DRYERS, DROSS PRESS, MISCELLANEOUS

SILOS

(4) 12' Diameter X Approx. 23' with 10' Cone Bottom 174 Ton Skirted Sand Silos, Each with Bin Vent Dust Collector and Truck Feed

10' Diameter X Approx. 22' 100-Ton Sand Silo, with Supports and Bin Vent Dust Collector

TRANSPORTERS

(4) 1995 MaCawber MDL. 4/4 4" Sand Transporters, s/ns 158A, 1332, 1248, NSN

DUST COLLECTORS AND SCRUBBERS

Farr 2-Compartment Cartridge Type Pulse Dust Collector, MDL. 50I, Rated at 12,000 CFM Equipped with Blower, Motor and Controls

(5) Torit Cartridge Pulse Dust Collectors, MDL. DFT2-8 and DFT2-4, 10 HP, s/ns IG399012-001, IG384850-001, IG427007-001

BACT 15,000 CFM Isocure Gas Scrubber, with 125 HP Blower and Motor, Pumps and Controls

Torit Cartridge Pulse Dust Collector, MDL. 2DF4 5 HP, s/n IG349585-001

LABORATORY AND INSPECTION

Phillips Real Time X-Ray System, Equipped with 160 KV Phillips MGC-03 Controller, Phillips IV-530 Contour Synthesizer, Sony Monitors, Phillips Head, Enclosure

Spectro Aluminum Base Spectrometer, MDL. LVO-M5 Equipped with 21-Elements, Computer and Printer, s/n 2833/90

Nikon Top Mounted Binocular Microscope, with Light Source, and Camera

Complete Sand and Met Labs

CORE RACKS

Approx. (250) 53" X 47" X 66" High Tip Up Type Stacking 6 and 11 Shelf Core Racks, with Spring Loaded Shelves

CONVEYORS, CORE DEFINING

30" X Approx. 20' Long Flat Belt Conveyor, with Drive and Omco 30" X 48" Chain Type Core Definer

(3) 30" X Approx. 16' Long Flat Belt Conveyor, with Drive and Omco 30" X 48" Chain Type Core Definer

30" X Approx. 8' Long Flat Belt Conveyor, with Drive and Omco 30" X 48" Chain Type Core Definer

CONVEYORS, OSCILLATING

40/32" X Approx. 150' Low Profile Type Oscillating Conveyor, with 90 Degree Curve and Approx. 15' Extension

Prab Job # C-08701-00 Oscillating Conveyor, 6" High X 24" Wide X 34' Long, 1.5 HP

Prab Job # C-05366-AA, BA, CA Oscillating Conveyor, 6" High X 24" Wide X 21'9" Long

Prab Job # C-09565-00 Oscillating Conveyor, 8" High X 24" Wide X 24' Long

(3) EA Prab Oscillating Conveyors, 6" High X 24" Wide X 21' Long, 1.5 HP

Prab Oscillating Conveyor, 5" Deep X 29" Wide X 28' Long

Prab Oscillating Conveyor, 5.5" Deep X 27.5" Wide X 41' Long

Prab Oscillating Conveyor, 6" Deep X 18" Wide X 24' Long, 5 HP

Prab Oscillating Conveyor, 9" Deep X 19" Wide X 105' Long, 5 HP

Prab Oscillating Conveyor, 4.5" Deep X 24" Wide X 43' Long, 1HP

Prab Oscillating Conveyor, 4.5" Deep X 36" Wide X 35' Long, 5HP

Prab Oscillating Conveyor, 4.5" Deep X 36" Wide X 40' Long, 5 HP

Casting Conveyor, 8" Deep X 33" Wide X 42.5' Long, 5 HP

CONVEYORS, STEEL FLIGHT

2004 New London, MDL. M721-T3-18"-45 18" X Approx. 9' S-Type Steel Flight Conveyor, s/n 104-73910

2004 New London, MDL. 721-T3-HSB 18" X Approx. 9' S-Type Steel Flight Conveyor, s/n 04-75310

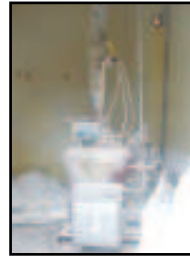
AIR COMPRESSORS & DRYERS

Sullair 500 HP Rotary Air Compressor, MDL. 32/25-500L WCAC, Reduced Voltage Starter, s/n 003-69309

1995 Sullair 300 HP Rotary Air Compressor, MDL. TS-32-300L WCAC, DRO, s/n 003-103002

(2) Sullair 300 HP Rotary Air Compressors, MDL. 32-300H, s/n 003-64848, 74088

Ingersol-Rand 200 HP Reciprocating Water Cooled Air Compressor, Type XLE, Air Receiver Tank, s/n 20000



MaCawber Transporter



Phillips X-Ray System



Deboco Air Dryers



Core Racks



View of Air Compressor



View of Air Compressor



View of Air Compressor



View of Air Compressor

Sullair 125 HP Rotary Air Compressor, MDL. 20-125, s/n 34376BHG

Sullair 125 HP Rotary Air Compressor, MDL. 10-125H, s/n 34141GGG

Sullair 125 HP Rotary Air Compressor, MDL. 20-125H, s/n 34132JGG

Sullair Refrigerated Air Dryer, MDL. PS1200, s/n 40413

(2) 1998 Gardner-Denver Refrigerated Compressed Air Dryers, MDL. RDS650A-4, s/n 305-05-19-1998-3117, NA

(2) Sullair Refrigerated Air Dryers, MDL. PS-1500, s/ns S-8410-0887-150DS, S-8506-1446-150DST

(2) Sullair Refrigerated Air Dryers, MDL. PS2-650-AC, s/ns 003011298, 003D3477

(2) Daboco Desicant Refrigerated Air Dryers, MDL. T2500, 2500 CFM, s/ns DE4050707, DE405010

Pioneer Refrigerated Air Dryer, MDL. HDS2400W, s/n 1132GCDE

DROSS PRESS

1995 Altek MDL. 501-S Dual Ram Down Acting Dross Press, s/n 02-07/13/95-SP-AB-VK-NR-US

MISCELLANEOUS

1999 Avio Explor IR MDL. TVS-620U Thermal Infrared Video System, s/n 0869C0451
Portable Vacuum Testers

REGISTER AT www.BIDITUP.com AND RECEIVE UPCOMING AUCTION UPDATES VIA EMAIL!

HORIZONTAL BORING MILL, VERTICAL BORING MILLS, HORIZONTAL MACHING CENTER, VERTICAL MACHINING CENTERS, CNC LATHES, CNC TAPPING CENTERS, OBI PRESSES, 4-POST HYDRAULIC PRESS, EDMS, UNIVERSAL GRINDER

MACHINE TOOLS AND PLANT SUPPORT

HORIZONTAL BORING MILL

Giddings & Lewis 4" Hybormill Table Type Horizontal Boring Mill, MDL. 70A-D4-T, 48" X 98" T-Slotted Table, 60" Column, 20 HP, s/n 150-799-67

VERTICAL BORING MILLS

BOKO Vertical Boring Mill, MDL. BS1V-E, 26" X 44.5" T-Slotted Built-In Rotary Table, 1-7 Ratio, 45-2,250 RPM Variable Speed

BOKO Vertical Boring Mill, MDL. F3, 26" X 56.5" Table, 36-1,800 RPM Variable Speed, s/n 40SB613/61-0788

HORIZONTAL MACHING CENTER

1987 Nigata 6-Pallet Horizontal Machining Center, MDL. HN80B, 52" X-Axis, 47" Y-Axis, 63-ATC, Turbo Chip Conveyor, HN-80B Control Box, Fanuc 11M CNC Control

VERTICAL MACHINING CENTERS

(2) **1996 Fadal VMC-10 Vertical Machining Center**, MDL. 914-10, 20" X 16" X 20" Travels, 7500 RPM, 230/440 VAC/60 HZ/3 PH/ 200 KVA, Fadal 88HS CNC Control, s/n 9603247, 9603245

(3) **1994 Fadal VMC-10 Vertical Machining Center**, MDL. 914-10, 20" X 16" X 20" Travels, 7500 RPM, Fadal 88HS CNC Control, s/n 9411429, 9411430, 9411431

Fadal Vertical Machining Center, MDL. 4020, 40" X 20" X 40" Travels, 10,000 RPM, Scrap Conveyor, Fadal 88 CNC Control, s/n 8708852

Acroloc Vertical Machining Center, MDL. AF 15-14

CNC LATHES

(2) **YAM CNC Lathe**, MDL. CK-1A, 8-Station Turret, Hydraulic Tail Stock, Chip Conveyor, s/n 77015, 77031

CNC TAPPING CENTERS

Enshu Vertical CNC Tapping Center, MDL. DT-CL, s/n 482, 470

Employe Lockers, PCs, Copy Machines

OBI PRESSES

L & J 100-Ton OBI Press, 28.5" X 32" Bed, 14" X 26" Ram, 10" Stroke, 4" Adjustment, 17.5" Shut Height, Safety Lights, s/n 100182A

(2) **Federal 80-Ton OBI Press**, MDL. 7, 28" X 36" Bed, 14" X 24" Ram, 10" Stroke, 3" Adjustment, 20" Shut Height, 15" Throat, Safe & Scan Safety Lights, s/ns 7A-561, 7A-563

Niagara 56-Ton OBI Press, 21" X 31.5" Bed, 16.5" X 21" Ram, 7" Stroke, 3" Adjustment, 18" Shut Height, 75 SPM, Safety Lights, s/n 32218

1988 Federal 32-Ton OBI Press, 20.5" X 24" Bed, 4.5" Stroke, 2" Adjustment, 125 SPM, Safety Lights, s/n H48539

4-POST HYDRAULIC PRESS

75-Ton Dake 4-Post Hydraulic Press, 48" X 60" T-Slotted Bed, 23" Shut Height, 56" Open Height, s/n 195917

EDMS

ELOX Sinker Type EDM, MDL. 12-4832, 40" X 72" Tank, Mitutoyo 3-Axis DRO, Astra MKII 200D Power Supply, s/n 012250

Charmilles EDM, MDL. EDM 900MC, Located in Mexico:
To Be Sold Via Photo From Auction Site in Greeneville, TN

UNIVERSAL GRINDER

Grand Rapids Universal Grinder, MDL. No. 62, 6" X 44" Bed, Torit Dust Collector, s/n 62274



G & L Hybormill Horizontal Boring Mill



BOKO F3 Vertical Boring Mill



Dake 4-Post Hydraulic Press

LEASE/FINANCING AVAILABLE DIRECT FROM

BIDITUP
Capital Corporation

TO SCHEDULE AN AUCTION OR APPRAISAL

CALL 818.508.7034

VERTICAL TRACER MILL, RADIAL DRILL, ENGINE LATHES, VERTICAL MILLS, HYDRAULIC SURFACE GRINDERS, VERTICAL BAND SAWS, WELDING, BLAST BOOTH, WASH SYSTEM

VERTICAL TRACER MILL

Rambaudi Vertical Tracer Mill, 19" X 99.5" T-Slotted Bed, 40" Table Travel, 20" Head Travel, Aerotrace Multi/Segment Grind, 3,000 RPM Variable Speed, 5 HP, Hydraulic Unit, s/n 120549

RADIAL DRILL

Cincinnati Bickford Superservice Radial Drill, 35" X 46" Table, 14" Column, 60" Arm, s/n 48-J03

ENGINE LATHES

TOS Engine Lathe, MDL. SN40L, 14" X 84" Bed, 60" Centers, 16" Swing, 10" 3-Jaw Chuck, 2" Capacity, Tool Post, Mitutoyo DRO, s/n 440150860172

South Bend Engine Lathe, 9.5" X 44" Bed, 28" Centers, 12" Swing, 1-1/4" Collet Closure, s/n 15999T

Monarch Engine Lathe, 17.5" X 57" Bed, 30" Centers, 16" Swing, 10" 3-Jaw Chuck, 1-3/4" Capacity, s/n 31316

Monarch Engine Lathe, 18.5" X 80" Bed, 48" Centers, 18" Swing, 12" 4-Jaw Chuck, s/n 62274

VERTICAL MILLS

Kearney & Trecker Rotary Head Milling Machine, MDL. No. 2, 16" X 30" T-Slotted Table, 6-Speed to 4,000 RPM

Bridgeport Series II Special Vertical Mill, 11" X 58" Table, 1 HP, s/n J148272

Bridgeport Series I Vertical Mill, 10" X 56" Table, 4,200 RPM Variable Speed, Acu-Rite Millmate DRO

Acer Vertical Mill, MDL. 3VKH, 10" X 50" T-Slotted Table, Power Feed, 4,200 RPM Variable Speed, 2 HP, s/n 9366797

Bridgeport Series I Vertical Mill, 9" X 42" T-Slotted Table, Power Feed, 4,200 RPM Variable Speed, 2 HP

Bridgeport Vertical Mill, 9" X 42" T-Slotted Table, 1 HP

Lagun Vertical Mill, MDL. FT-1, 9" X 42" T-Slotted Bed, 2,940 RPM, 2 HP

HYDRAULIC SURFACE GRINDERS

Thompson Hydraulic Surface Grinder, 12" X 24" Magnetic Chuck, 12" Grind Wheel, s/n B52840

Kent Hydraulic Surface Grinder, 6" X 18" Magnetic Chuck, 8" Grind Wheel, Sokki DRO

KO Lee Hydraulic Surface Grinder, 6" X 12" Walker Ceramax Chuck, 8" Grind Wheel, s/n 21100

VERTICAL BAND SAWS

(3) Tannewitz Vertical Band Saws, MDL. R2812VW, 28", Variable Speed Control with Digital Readouts, Welder and Grinder, Tilting Table, s/ns 2-1117, 20113, 95147

Roll-In-Saw Vertical Band Saw, 12" Throat, 18.5" X 30.5" Table

WELDING

Miller Dimension 652 CC/CV DC Welder, 22A Wire Feed

Thermal Arc Mega-Arc Welder

Lincoln Pro-Cut 80 Welder

Miller Radiator 1A Cooling System

Miller Gold Star Welder

Miller Bobcat Welder

BLAST BOOTH

BCP Blast Booth with Air Return & Blast Gun, 10' Wide X 8' High X 12' Deep

WASH SYSTEM

1982 IMF Wash System, s/n 60-1734



Nigata Horizontal Machining Center



Fadal 914-10 VMC



Fadal 4020 VMC



YAM CNC Lathe



Federal 80-Ton OBI

MATERIAL HANDLING, ROLLING STOCK, INSPECTION & LAB, MISCELLANEOUS

MATERIAL HANDLING

(2) Lodestar 3-Ton Single Girder Hoist, 60' Run

Saturn Engineering 3,000 LB Freestanding Jib Hoist, s/n 3005

ROLLING STOCK

Bobcat Heavy Skid Steer Loader, MDL. 975, s/n 4963-12923

Ford Super Duty E-350 Van, 145,000 Miles, VIN# 1FTSS34LYNA78020

Scissor Lift

Armadillo SW9XR Floor Sweeper

INSPECTION & LAB

Mitutoyo CMM, MDL. BN-1015, 66" X 100.5" Inspection Table, Renishaw PH9 Probe, Mitutoyo CMMC-35, Joystick Control Unit, s/n 860823

Mitutoyo CMM, MDL. BRT-910, 46.5" X 68" Inspection Table, Renishaw PH9 Probe, s/n 0097609

Comero Fanamation CMM, Renishaw PHCP Probe & Control

Braden Technologies Shotscope

Chatillon 200 LB Motorized Test Stand, MDL. TCM 201

Spectrolab, MDL. LVO-M55A, PC & Printer, s/n 2833/90

Togoseiki Hardness Tester, MDL. Mark G-516

Duomet II Belt Surfacers

100's Gauges, Micrometers, Dial Indicators, Height Gauges, Gauge Sets, Calipers

Ohaus MB200 Digital Balance

Mojave 2' X 3' Granite Surface Plate

(2) Stereo Microscopes

COSA Dewpoint Meters

Hot Plates & Stirres

MISCELLANEOUS

PARTS MACHINES: Caterpillar Fork Lift, 1996 Fadal VMC, MDL. 914-15, 1995 Fadal VMC, MDL. 914-15, 1994 Fadal VMC, MDL. 914-15, 1993 Fadal VMC, MDL. 914-15

(2) 14-Drawer Tool Chest, (4) 12-Drawer Tool Chests, 11-Drawer Tool Chest, (8) 10-Drawer Tool Chests, (9) 8-Drawer Tool Chests, (3) 7-Drawer Tool Chest, (3) 6-Drawer Tool Chests, (2) 5-Drawer Tool Chests, 3-Drawer Tool Chest, (2) New London Steel Trak 16" Scrap Conveyors, Inserts, Drill Bits, Bushings, Taps, Tool Holders, Cutting Tools, Drillers, Collars, Seals, Cables, Bearings, Hexbits, Clutch Drivers, Fadal Couplings, Clamps, Springs, Block Mounts, Buffing Pads, Plugs, Micro Switches, Photoeyes, Prox Switches, Limit Switches, Relays, Transformers, Flame Relays, Coils, Dial Indexes, Sensor Switches, Enclosures, Valve Switches, Trim Die Punches, Grease & Hydraulic Fittings, Cylinder Parts, Pistons, Drill Bits, Knock Out Parts, Boring Bars, Pipe Taps, Reamers, Torch Tips, Conduit Fittings, Check Valves, Regulators, Pilot Valves, Saw Blades, Pressure Gauges, Splicers, Barbs, Die Clamps, Back Plates, Guide Bars, Seal Kits, Anchor Bolts, Set Screws, Bearings, Pipe Tees, Elbows, Plugs, Dollies, Rolling Carts, Fasteners, Pallet Racking, Machinery Parts, Rolling Ladders, Pallet Jacks, Cantilever Racking, Belts, Wire Spools, Mezzanine with Single Stair Case Trash & Scrap Hoppers, Gym Equipment: Universal Machine, Cable Cross-Over Machine, Leg Machines, Exercise Bike, Treadmill, Free Weights, Orion Auto Pallet Wrapper, Spectrotherm Box Oven, MDL. THE-88, s/n 199, Nobles Typhoon Floor Scrubber, Banding Carts, Drill Presses, Grinders & Buffers, Arbor Presses, DeWalt 14" Cut-Off Saw, Arcloc AF15-14, Machine Vises, Hand Tools Bench Vises, Conveyor, Fire Cabinets, Corrosive Cabinets, Desk, Tables, Bay Networks Bay Stack Instant Internet 400, Xerox 2515 Printer, Cannon NP6545 Copier



Grand Rapids Grinder



Elox Sinker-Type EDM



Super Service Radil Drill



Charmilles EM 900MC EDM



Rotary Head Milling Machine



Rambaudi Tracer Mill



Thompson Surface Grinder



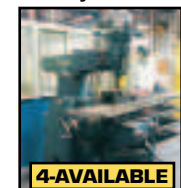
TOS SN40C Engine Lathe



Kent Surface Grinder



KO Lee Surface Grinder



Bridgeport V-Mill



Lagun V-Mill

FOR LEASE & FINANCE SERVICES - BIDITUP CAPITAL CORPORATION

CALL 818.508.7034

VERTICAL BAND SAWS, WELDING, BLAST BOOTH, WASH SYSTEM, MATERIAL HANDLING, AIR HANDLING, ROLLING STOCK, INSPECTION & LAB, MISCELLANEOUS AND REAL ESTATE



Tannewitz V-Band Saw



Roll-In-Saw



Miller 652 Welder



Thermal Arc Welder



Acroloc AF 15-14



BCP Blast Booth



IMF Wash System



Drill Press



Bobcat Skid Steer Loader



Mitutoyo CMM



Mitutoyo CMM



Ford Super Duty Van



Inspection



Tool Chests



Gym Equipment



Floor Sweeper

REAL ESTATE
(To be Auctioned at 1:00 PM EDT)




Approximately 24.5 acres and located in Greeneville, TN
Block and metal structure with 260,000 sq. feet of manufacturing, storage, and offices occupying approximately 16.5 acres. 8-Additional acres unoccupied; Ceiling heights in the manufacturing and storage areas are 26'-33'; Office area is two stories with a total ceiling height of 22 feet; Majority of the manufacturing and storage area is heated; office areas have heat and air conditioning; Three dock areas with 3 bays; Additional dock area with an oversized door; Two oversized doors at ground level; Most manufacturing areas are piped for air, gas, and water. A truck scale and a 120,000 gallon propane tank system are available.

GO TO www.BIDITUP.com FOR TERMS AND CONDITIONS.
Sale subject to owner confirmation.

Call Us Now! - 818.508.7034

REGISTER AT www.BIDITUP.com AND RECEIVE UPCOMING AUCTION UPDATES VIA EMAIL!

**LIVE
ON-SITE &
WEBCAST**

MACHINERY AUCTION

MAY 02, 2006

**COMPLETE ALUMINUM PERMANENT MOLDING
AND DIE CAST FACILITY INCLUDING MACHINE SHOP
& REAL ESTATE**

Greenville Casting Inc.

AUCTION:
Tuesday, May 02, 2006
Beginning at 10:00 AM EDT

PREVIEW:
Monday, May 01, 2006
9:00 AM to 4:00 PM EDT

LOCATION:
500 North Rufe Taylor Rd.
Greeneville, TN 37744, USA
(See pg 5 for Directions & Lodging)

FOR THE COMPLETE TERMS & CONDITIONS OF THIS AUCTION
Please visit our website - www.BIDITUP.com - and click on Greeneville Casting Inc.



Gudgeon Thermal Reclamation System

NOW OFFERING IN-HOUSE FINANCING & LEASING. CALL 818.508.7034

FEATURED AUCTION
**COMPLETE ALUMINUM
PERMANENT MOLDING
AND DIE CAST FACILITY
INCLUDING MACHINE SHOP
& REAL ESTATE**

Greenville Casting Inc.
Tuesday, May 02, 2006
Greeneville, TN 37744, USA

For a Complete Listing of Upcoming Auctions, Visit
www.BIDITUP.com. Register Online and Receive Auction
Updates & Information via E-Mail.



Hall Platen Tilt Pour Permanent Molding Machine



Prince 850-Ton Cold Chamber Aluminium
Die Cast Machine



Goff 3672 SP Blast Machine

11426 Ventura Blvd.
Second Floor
Studio City, CA 91604
Phone - 818.508.7034
Fax - 818.508.3025
info@biditup.com
Asa Marshall, Auctioneer
TN License #2276

MACHINERY AUCTION, LOOK INSIDE!

**ATTENTION:
PLANT MANAGER OR EQUIPMENT BUYER**

Presort
First Class Mail
U.S. Postage
PAID
Minneapolis, MN
Permit #3723



WEBCAST

Can't attend the auction in person? You can participate and bid in real time via the Internet. Preview assets with detailed digital photos, lot catalogs, and in-depth descriptions. For more information, visit www.BIDITUP.com

Please note, all webcast participants must submit a 25% deposit and signed registration forms no later than 24 hours before a sale.