

AUCTION

Thursday, March 16, 2006
Beginning at 10:00 AM CST
1602 FM 1460
Round Rock, TX 78664 USA



WEBCAST
Can't attend the auction in person?
Bid live on www.BIDITUP.com

COMPLETE AMADA CNC FABRICATION & TURRET PUNCH FACILITY

— Preferred, Inc. —



1996

CNC

6-SHELF TOWER LOADER & UNLOADER

Amada Vipros 358 King Punching Cell



1988-1990

CNC

3 AVAILABLE

2-AUTO INDEX

Amada PEGA 345 King CNC Turret Punch



1990

CNC

Amada Lasmac 667II Laser Cutter



1988-90

CNC

5 AVAILABLE

Amada FBD 5020E CNC Press Brake



1997

CNC

3 AVAILABLE

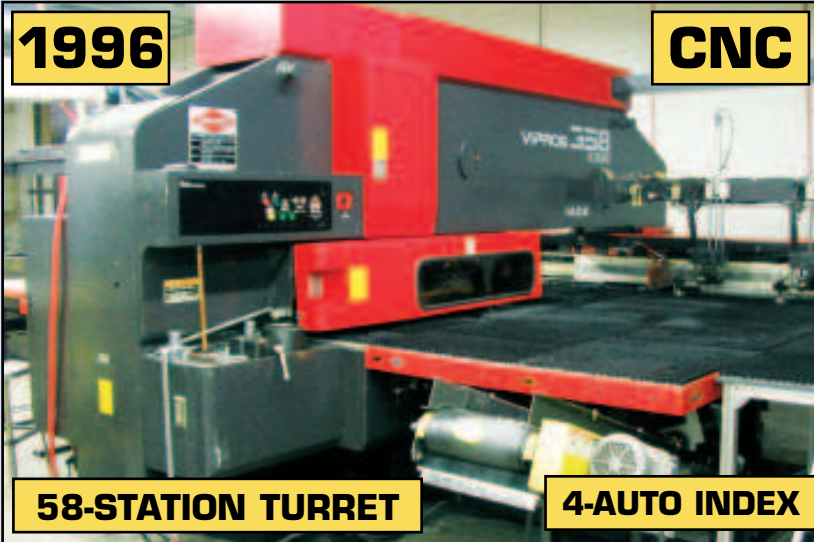
Amada RG-355 CNC Press Brake

- ▶ AUTOMATED PUNCHING CELL
- ▶ CNC LASER CUTTER
- ▶ CNC TURRET PUNCHES
- ▶ SHEET LOADERS
- ▶ SLUG CONVEYORS
- ▶ TOOLING
- ▶ PRESS BRAKES
- ▶ STRAIGHT SIDE PRESSES
- ▶ PUNCH PRESSES
- ▶ INSERTION PRESSES
- ▶ MECHANICAL SHEAR
- ▶ ENGINE LATHES
- ▶ VERTICAL MILLS
- ▶ COLD SAWS
- ▶ VERTICAL BAND SAW
- ▶ HORIZONTAL BAND SAW
- ▶ RADIUS BENDER
- ▶ POWER ROLL
- ▶ HAND ROLL
- ▶ WIDE BELT SANDERS
- ▶ HYDRAULIC SURFACE GRINDERS
- ▶ TOOL GRINDER
- ▶ TOOL IMPREGNATOR
- ▶ GRINDERS/BUFFERS
- ▶ TAPPERS
- ▶ DRILL PRESSES
- ▶ SPOT WELDERS
- ▶ WELDING EQUIPMENT
- ▶ PARTS WASHERS
- ▶ BOX OVEN
- ▶ FINISHING & BLAST
- ▶ INSPECTION
- ▶ ROLLING STOCK
- ▶ AIR HANDLING
- ▶ AND MUCH MORE!

AUTOMATED PUNCHING CELL, CNC LASER CUTTER

1996

CNC



58-STATION TURRET

4-AUTO INDEX

AUTOMATED PUNCHING CELL

1996 Amada 33-Ton CNC Turret Punch, MDL. Vipros 358 King, 50' x 80" Sheet Capacity, 58-Station Turret, 4-Auto Index, Brush Tables, Fanuc 04PC CNC Control, S/N 35820155; Amada 6-Shelf Automated Loading System, MDL. AS641H, 4' x 10' Sheet Capacity, S/N AS641H84, Amada Single Cart Unload System, MDL. UL-410H, 4' x 10' Sheet Capacity; Sun Microsystems Line Control; Amada Touch Screen Cell Control Version 4.0; New London Slug Conveyors; SBC 5.5EX Chiller, S/N 46012296, Yuken Hydraulic Unit, Brand New Set of Amada Tool Guides

HUGE QUANTITIES OF AMADA TOOLING TO BE AUCTIONED

6-SHELF



4' X 10' SHEET SIZE

Amada Vipros 358 King CNC Turret Punch

Amada 6-Shelf Sheet Loader



4' X 10' SHEET SIZE

Amada Single Cart Unload System

1990

CNC



Amada LASMAC 667 II CNC Laser Cutter

CNC LASER CUTTER

1990 Amada 1,800 Watt CNC Laser Cutting Machine, MDL. LC 667II, 72" x 120" Sheet Capacity, PRC AM 2000T Resinator (S/N 9010L399), 7,743 HRS, New Turbine (1/05), Clean Cut System, OVS 1100 Optical Verification System, Smoke Master Dust Collector, Super DVS MIC FX# Dust Collector, S/N M-06105



FANUC OM CNC Control & OVS 1100

TO SCHEDULE AN AUCTION OR APPRAISAL

CALL 818.508.7034

CNC TURRET PUNCHES, SHEET LOADER & TOOLING



Amada PEGA 345 King CNC Turret Punch

(2) 1990 CNC TURRET PUNCHES

1990 Amada 33-Ton CNC Turret Punch, MDL. PEGA 345 King, 40" x 50" Sheet Capacity, 58-Station Turret, 2-Auto Index, Air Blow Oil Mist System, Brush Tables, Fanuc 04PC CNC Control, S/N AK450233

1990 Amada 33-Ton CNC Turret Punch, MDL. PEGA 345 King, 40" x 50" Sheet Capacity, 58-Station Turret, 2-Auto Index, Fanuc 04PC CNC Control, S/N AK450182

SHEET LOADER

1989 Amada Turret Punch Sheet Loader, MDL. MP1212NF, 48" x 48" Sheet Capacity, S/N 12122197



Amada MP1212 NF Sheet Loader



Amada PEGA 345 King CNC Turret Punch



Amada FANUC CNC Control

1988 CNC TURRET PUNCH

1988 Amada 33-Ton CNC Turret Punch, MDL. PEGA 345 King, 40" x 50" Sheet Capacity, 58-Station Turret, 2-Auto Index, Fanuc 04PC CNC Control S/N AK450125

KNOW OF ANY FACILITIES CLOSING, MOVING OR DOWNSIZING?

Call 818.508.7034

FOR IMMEDIATE SALE

1999 Amada 55-Ton CNC Turret Punch
Located in Los Angeles, CA



1999 Amada 55-Ton CNC Turret Punch, MDL. VIPROS 568, S/N 56810035

Equipped with 62-Station Turret, Amada CL-510 Side Loader & Unloader, Oil Chiller, Ball Tables, Auto-Lube, Scrap Conveyor, Fanuc 04 PC Control (Immaculate Condition)

For More Details, Call 818.508.7034 or Visit www.BIDITUP.com



Amada Tool Guides



Amada Spare Parts

REGISTER AT www.BIDITUP.com AND RECEIVE UPCOMING AUCTION UPDATES VIA EMAIL!

SLUG CONVEYORS, TOOLING, PRESS BRAKES, STRAIGHT SIDE PRESSES, PUNCH PRESSES

SLUG CONVEYORS

(2) Turbo Slug Conveyor, MDL. 6398-8005, S/N 313632, 313635
Turbo Slug Conveyor, MDL. 6288-8039

TOOLING

Amada CR-10 Multi Corner Radius Tool, 1/8-1/2 Radius, 3/4 Notch
Amada NT-6 Multi Notching Tool, 30, 45, 60 and 90 Degree, 1/2 x 3/4 Notch
Complete Set of Amada Alignment Jigs
New Clamps and Spare Parts for Turret Punches
Large Quantity of Turret Punch Tooling and Tool Holders

PRESS BRAKES

1991 Amada 110-Ton CNC Press Brake, MDL. FBD 1030E, 118.1" Bed, 122.0" Max Bend Length, 106.3" Between Housings, 15.75" Throat, 14.57" Open, 3.94" Stroke, Amada NC9EXII CNC Backgauge, S/N 1030302

1980 Amada 88-Ton CNC Press Brake, MDL. RG-80S, 78.8" Bed, 82.1" Max Bend Length, 59.9" Between Housings, 15.76" Throat, 13.79" Open, 3.94" Stroke, Amada NC9EX CNC Backgauge, S/N 803822

1989 Amada Promecam 75-Ton CNC Press Brake, MDL. RG-75-25, 98.5" Overall Bend Length, Amada Auto 99 CNC Back Gauge

1988 Amada 55-Ton CNC Press Brake, MDL. RG-50, 78.8" Bed, 82.1" Max Bend Length, 59.9" Between Housings, 15.76" Throat, 14.58" Open, 3.94" Stroke, Amada NC9EXII CNC Backgauge, S/N 506396

1990 Amada 55-Ton CNC Press Brake, MDL. FBD 5020E, 78.7" Bed, 82.1" Max Bending Length, 66.9" Between Housings, 15.75" Throat, 14.57" Open, 3.94" Stroke, Amada NC9EXII CNC Backgauge, S/N 5200427

(3) **1989 Amada 55-Ton CNC Press Brake**, MDL. FBD 5020E, 78.7" Bed, 82.1" Max Bending Length, 66.9" Between Housings, 15.75" Throat, 14.57" Open, 3.94" Stroke, Amada NC9EXII CNC Backgauge, S/N 5200303, 5200302, 5200301

1988 Amada 55-Ton CNC Press Brake, MDL. FBD 5020E, 78.7" Bed, 82.1" Max Bending Length, 66.9" Between Housings, 15.75" Throat, 14.57" Open, 3.94" Stroke, Amada NC9EXII CNC Backgauge, S/N 5200216

(3) **1997 Amada 38.5-Ton CNC Press Brake**, MDL. RG-35S, 47.3" Bed, 49.3" Max Bend Length, 40.2" Between Housings, 7.88" Throat, 14.58" Open, 3.94" Stroke, Amada NC9EXII CNC Backgauge, S/N 356858, 356855, 356854

Chicago 45-Ton CNC Press Brake, MDL. 56-A, 73" Overall Bend Length, Motorized Ram Adjustment, Hurco Autobend CNC Backgauge, S/N 19628

Wysong 35-Ton CNC Press Brake, MDL. H-3572, 72" Overall Bend Length, 3.5" Stroke, 3" Adjustment, 9" Max Die Space, Hurco Autobend V CNC Backgauge, S/N HPB13-160

Chicago CNC Press Brake, MDL. HO-HB-1978, 72" Overall Bend Length, Motorized Ram Adjustment, Hurco Autobend IV CNC Backgauge, S/N

Chicago Press Brake, MDL. HO-HB-1978, 4' Overall Bend Length, S/N 1670

*** LARGE QUANTITY OF PRESS BRAKE DIES ***

STRAIGHT SIDE PRESSES

Clearing 250-Ton Two Point Straight Side Press, MDL. F-2250-84, 60" x 84" Bed, 60" x 82" Ram

Verson 150-Ton Straight Side Double Crank Press, MDL. 150-BS-72, 48" x 76" Bed, 48" x 70" Ram, 8" Stroke, 5" Adjustment, 18" Shut Height, 20-50 SPM Variable Speed, PRE Air Feed, S/N 20345

Bliss Straight Side Single Crank Press, High Speed

PUNCH PRESSES

V&O 75-Ton Punch Press, MDL. 75, 25" x 44" Bed, 13.5" x 29.5" Ram, 50-150 SPM Variable Speed, S/N 75ST-41

V&O 60-Ton Punch Press, MDL. 60, 22" x 39" bed, 13" x 26" Ram, 50-150 SPM Variable Speed, S/N 60ST-73

Johnson 56-Ton Punch Press, MDL. 5BG, 18" x 30" Bed, 6" Stroke, 3" Adjustment, S/N 56482

(2) **Rousselle Punch Press**, MDL. OF, 18" x 32" Bed

OBI Punch Press

**ON-SITE &
WEBCAST
AUCTION**

*Can't make it to the
auction in person?
Bid live online at*

www.BIDITUP.com



Amada FBD 1030E CNC Press Brake



Amada FBD 5020E CNC Press Brake



Amada RG-35S CNC Press Brake

For Lease & Finance Services-BIDITUP Capital Corporation

CNC PRESS BRAKES & INSERTION PRESSES



View of Amada FBD 5020 E CNC Press Brakes



Amada RG-80 CNC Press Brake



View of Amada RG-355 CNC Press Brakes



Amada RG-75-25 CNC Press Brake



Wysong CNC Press Brake



Chicago CNC Press Brake



Haeger 618-IL



Haeger 618

DIRECTIONS

From: Austin-Bergstrom Int'l Airport (AUS)
(Approx. 28 Miles From Auction Site)

Start at 3600 Presidential Blvd. Presidential Blvd becomes Cardinal Loop. Turn left on TX-71 E. Take left ramp onto Bastrop Hwy toward TX-71 West. Bastrop Hwy becomes US-183 North. US-183 North becomes Anderson Lane E [US-183]. Turn right on I-35 N. Bear left onto I-35 North. Take exit #253 onto N I-35 toward Taylor. Turn right on Palm Valley Blvd. Continue on E Palm Valley Blvd. Turn left on FM-1460. Arrive at 1602 FM 1460, Round Rock, TX. Auction Site is on the left, look for signs.

LODGING

Staybridge Suites
520 S I H 35
Round Rock, TX512-733-0942

Comfort Suites
609 Chisholm Trl
Round Rock, TX512-244-2700

Best Western Executive Inn
1851 N I-35
Round Rock, TX512-255-3222

**LEASE/FINANCING
AVAILABLE**

**DIRECT FROM
BIDITUP
Capital Corporation**

Call 818.508.7034

BIDITUP AUCTIONS & APPRAISALS WORLDWIDE

www.BIDITUP.com

INSERTION PRESSES, MECHANICAL SHEAR, ENGINE LATHES, VERTICAL MILLS, COLD SAWS, VERTICAL BAND SAW, HORIZONTAL BAND SAW, RADIUS BENDER, POWER ROLL, HAND ROLL, WIDE BELT SANDERS, HYDRAULIC SURFACE GRINDERS, TOOL GRINDER, TOOL IMPREGNATOR, GRINDERS/BUFFERS, TAPPERS, DRILL PRESSES



Amada M-2545 Mechanical Shear



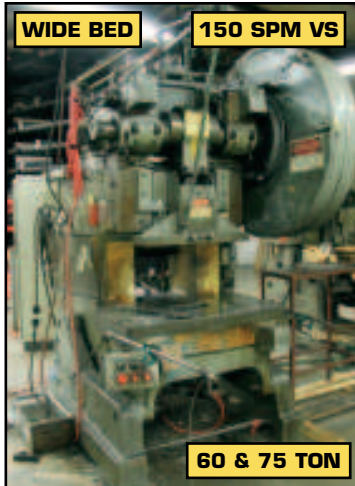
Mazak-Mate Engine Lathe



Tool Room Lathe



Bridgeport Vertical Mills



V & O Wide Bed Punch Press



Trennjaeger Cold Saw



PM Surface Grinder



KO Lee Surface Grinder



Vertical Band Saw



Clearing F-2250-84 Straight Side Press



Verson 150-BS-72 Straight Side Press

INSERTION PRESSES

Haeger 6-Ton Insertion Press, MDL. 618-IL, 18" Throat, Auto System Bowl Feed, Foot Control, S/N 930

Haeger 6-Ton Insertion Press, MDL. 618, Auto System Bowl Feed, Foot Control Insertion Press, 9" Throat, S/N 6680

MECHANICAL SHEAR

1986 Amada Mechanical Shear, MDL. M-2545, 8' x 3/16" Capacity, Digital Backgauge System Max Length 39.37", Pneumatic Sheet Support System

ENGINE LATHES

Mazak-Mate Engine Lathe, 12" x 60" Bed, 36" Centers, 16" Swing, 12" 3-Jaw Chuck, 1-3/4" Capacity, Tool Post, Numeric Threading

Hardinge Tool Room Lathe, 3-1/2" x 28" Dovetail Bed, 13" Centers, 9" Swing, 1 1/8" Capacity

VERTICAL MILLS

(2) **Bridgeport Vertical Mills**, 9" x 42" T-Slotted Table, Power Feed, 1 HP, 2,750 RPM, S/N 128472, 53465

COLD SAWS

Trennjaeger Heavy Duty Cold Saw, MDL. LPC 110/400, 14" Blade, 14" Cutting Capacity, S/N GH1349

Trennjaeger Cold Saw, MDL. VC 260, S/N GD1-32

VERTICAL BAND SAW

Powermatic Vertical Band Saw, MDL. 87, 20" Throat, 24" x 24" Table, Blade Welder, S/N 287486

HORIZONTAL BAND SAW

Johnson Horizontal Band Saw, MDL. B, S/N 14430

RADIUS BENDER

Radius Bender, .05 Max Thickness, .590 Overall Length

Rotary Tables

POWER ROLL

Lown Roll, MDL. G501, (3) 62" x 4.5" Diameter Rolls

HAND ROLL

Tennsmith 24" Hand Roll, 20 Gauge Capacity Mild Steel, S/N 04801

WIDE BELT SANDERS

Timesaver 19" Speed Belt Sander, MDL. 119M-1, S/N 700.8

(2) **AEM 36" Wide Belt Sander/Grinder**

HYDRAULIC SURFACE GRINDERS

KO Lee Hydraulic Surface Grinder, 8" Grind Wheel, Tool Sharpening Fixture, S/N 16344-EL

Thompson Hydraulic Surface Grinder, 6" x 18" MAdnetic Chuck, 12" Grind Wheel

Parker Majestic Hydraulic Surface Grinder, 6" x 18" Walker Ceramax Chuck, Dust Collector, S/N 3197UM

Do All Hydraulic Surface Grinder, 6" x 18" Magnetic Chuck

TOOL GRINDER

Amada Manual Tool Grinder, MDL. TEG-160E, Coolant, S/N HH3138

TOOL IMPREGNATOR

Rocklinizer Tool Impregnator, MDL. 500

GRINDERS/BUFFERS

Powermatic 8" Double End Buffer, S/N A-272-76

6" Vertical Belt Grinder

4" Double End Grinder

Dayton Double End Grinder

TAPPERS

(2) **Brother Hi-Top Tappers**, MDL. BTO-263, 18" Swing, S/N 114787, 114126

DRILL PRESSES

(2) **Craftsman 15-1/2" Floor Type Drill Press**, Variable Speed

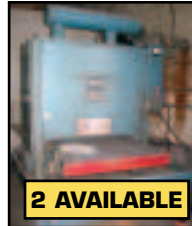
Powermatic Vertical Drill Bench, (2) 20" Drill Presses, Variable Speed, Machine Vises

KNOW OF ANY FACILITIES CLOSING, MOVING OR DOWNSIZING?

SPOT WELDERS, WELDING EQUIPMENT, PARTS WASHERS, BOX OVEN, FINISHING & BLAST, INSPECTION, ROLLING STOCK, AIR HANDLING, MISCELLANEOUS



Low Power Roll



AEM 36" Belt Sander

2 AVAILABLE



Powermatic Drill Bench



8-CAMERA

4' X 6'

Metalsoft Fabrivation 4600



Mitutoyo CMM



CAT Forklift



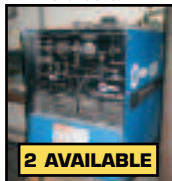
Brake Dies



Inspection



Clark Forklift



Miller Syncrowave 250

2 AVAILABLE



Parts Washer



Double End Grinder

SPOT WELDERS

Taylor Winfield 50 KVA Spot Welder, MDL .EB8350 Air, 8" Throat x 3" Gap, S/N 57388

Taylor Winfield 30 KVA Spot Welder, MDL. EBD3-8-30 Air, 8" Throat x 3" Gap, S/N 75174

WELDING EQUIPMENT

- TRW 2500 Stud Welder, MDL. 100
- (2) Miller Syncrowave 250 Welder
- Millermatic 200 Welder
- Miller XMT 300 CC/CV Welder
- Miller Blue Star Welder
- Miller S22A Wire Feed Welder
- Miller DC Welder
- Cobramatic Mig Welder
- Acetylene Tanks
- Rotary Weld Table
- Welding Tables & Wire

PARTS WASHERS

(2) Chicago Electric Tools 20-Gallon Parts Washer

BOX OVEN

Thermolyne Furnatrol III Box Oven

FINISHING & BLAST

Sweeco 42" Diameter Vibratory Finishing Mill

Zero Blast Cabinet, MDL. BNP50-2, S/N 23343

8' x 6' Blast & Grinding Booth

INSPECTION

- Metal Soft Fabrivation CNC Flat Pattern Inspection Camera, MDL. 4600, 4' x 6' Inspection Table, 8-Camera, S/N 013
- Mitutoyo Digital Inspection Equipment
- Mitutoyo Coordinate Measurement Machine, MDL. B241, 60" x 41.5" Table, Mitutoyo Micropak 21
- Mitutoyo 24" Height Gauge
- Mitutoyo Calipers
- Mitutoyo 100 cm Vernier Calipers
- Trimos Fowler Height Gauge
- Profilometer
- Thickness Gauges
- Punch Sets
- Angle Blocks
- Granite Surface Plates and Tables

ROLLING STOCK

Caterpillar LPG Fork Lift, MDL. GC15, 3,000 LB, Hard Tires, Double Mast, S/N 2EM05538

Clark LPG Forklift, MDL. GC512, 2,500 LB, Hard Tires, Side Shift, Double Mast, S/N G127-054606330FA

Clark Electric Stand Up Forklift

Clark Electric Forklift

AIR HANDLING

Sullair Air Compressor, MDL. 10-30L, S/N 003-49717

Sullair 50-HP Air Compressor With Induction Motor

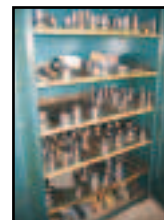
(2) HP Air Compressors

MISCELLANEOUS

14" Press Air Feed, Multipresses, Arbor Presses, Toledo Honest Weight Floor Scales, Table Saw, Box Stapler, Hand Tools, Machine Vises, Collets, Magnetic Chucks, Mathews Demagnetizer, Spindles, Boring Bars, Mills, Reamers, Drills, Spare Grinding Wheels, Tool Boxes, Die Lift Carts, Pallet Jacks, Dollies, Cantilever Racking, Pallet Racking, Scrap Hoppers, Steel Rolling Carts, Wire Baskets, Parts Bins, Ditch Witch Tiller, Toledo Honest Weight Balance, 16" Heat Sealer, 24" Conveyor, Space Heaters, MaxxAir Shop Fans, Tables & Benches, PC & Laser Jet Printer and More



Blast Cabinet



Punch Tooling



Punch Tooling



Brother Tapper

REAL ESTATE - FOR SALE/LEASE

Unbelievable User/Owner or Investor Opportunity!

Former Location of American Casual Furniture - Built in 1979
1501 Truman Blvd, Caruthersville, MO 63830



Industrial Property With Rental Income
127,000 Sq Ft Steel Frame Bldg on 13 Acres
50% of Property Leased for 5 Years at \$5,000/
Month w/ 3% Annual Increase

Call Us Now! - 818.508.7034

REGISTER AT www.BIDITUP.com AND RECEIVE UPCOMING AUCTION UPDATES VIA EMAIL!

**LIVE
ON-SITE &
WEBCAST**

MACHINERY AUCTION

MARCH 16, 2006

COMPLETE AMADA CNC FABRICATION & TURRET PUNCH FACILITY

Preferred, Inc.

AUCTION:

Thursday, March 16, 2006
Beginning at 10:00 AM CST

PREVIEW:

Wednesday, March 15, 2006
9:00 AM to 4:00 PM CST

LOCATION:

1602 FM 1460
Round Rock, TX 78664 USA
(See pg 5 for Directions & Lodging)



Amada Vipros 358 King Punching Cell



Amada Lasmac 667II Laser Cutter

FOR THE COMPLETE TERMS & CONDITIONS OF THIS AUCTION

Please visit our website - www.BIDITUP.com - and click on Preferred, Inc.

NOW OFFERING IN-HOUSE FINANCING & LEASING. CALL 818.508.7034

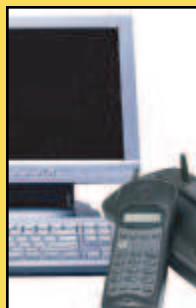
FEATURED AUCTION

COMPLETE AMADA CNC FABRICATION & TURRET PUNCH FACILITY

Preferred, Inc.

**Thursday, March 16, 2006
Round Rock, TX**

For a Complete Listing of Upcoming Auctions, Visit
www.BIDITUP.com. Register Online and Receive Auction
Updates & Information via E-Mail



WEBCAST

Can't attend the auction in person? You can participate and bid in real time via the Internet. Preview assets with detailed digital photos, lot catalogs, and in-depth descriptions. For more information, visit www.BIDITUP.com

Please note, all webcast participants must submit a 25% deposit and signed registration forms no later than 24 hours before a sale.



Amada FBD 5020 E CNC Press Brakes



Amada M-2545 Mechanical Shear



Haeger 618-IL

MACHINERY AUCTION, LOOK INSIDE!

**ATTENTION:
PLANT MANAGER OR EQUIPMENT BUYER**

Presort
First Class Mail
U.S. Postage
PAID
Minneapolis, MN
Permit #3723