

(5) Live On-Site & Webcast Auctions

Major Tier 1 Automotive Plastic & Rubber Parts Manufacturer

BY ORDER OF UNITED STATES BANKRUPTCY COURT NORTHERN DISTRICT OF OHIO, EASTERN DIVISION
CASE NO. 06-51848, (JOINTLY ADMINISTERED), CHAPTER 11



Creative Engineered Polymer Products

(5) Complete Facility Closures

 Located throughout Michigan & Ohio

Over 4000 Lots
Multi-Million Dollar Plastics Auction

- (66) Injection Molders 33 ton to 3300 ton as late as 2005
- (30) Blow Molders as late as 1998
- Robots
- Granulators
- Dryers
- Chillers
- Machine Tools
- Forklifts
- Quality Control



2005
Cincinnati Milacron Model MM725 105 725-Ton Double-Shot Injection Molding Machine



AEC Whitlock Dryers

 The
BRANFORD Group™
www.TheBranfordGroup.com

 **BIDITUP**™
AUCTIONS & APPRAISALS WORLDWIDE
www.BIDITUP.com



This auction is too large to capture in one brochure, this flyer only highlights and features a small portion of assets to be offered in the (5) CEP Auctions. Please visit our websites to view individual auction event pages tailored to each location with extensive image galleries, equipment listings, specifications, and sale location details. Each facility has a large amount of ancillary equipment, machine tools, quality control, air compressors, forklifts, vehicles, and much more.

All preview dates the day prior

Sale # 1 Page 2-3
December 12th, 10:00am
 985 Falls Creek Drive
 Vandalia, Ohio 45377

Injection Molding & Toolroom

- (23) Injection Molders as Late as yr 2002
- 33 ton to 750 ton

Sale # 2 Page 4-5
December 13th, 10:00am
 8707 Samuel Barton Drive
 Belleville, Michigan 48111

Injection Molding & Support

- (16) Injection Molders as Late as 2005
- 110 ton to 1500 ton

Sale # 3 Page 6-7
December 14th, 10:00am
 3131 Columbus Road, NE
 Canton, Ohio 44705

Blow Molding & Support

- (19) Cincinnati, Sterling, & Uniloy Blow Molders as late as 1998

Sale # 4 Page 8-9
December 19th, 10:00am
 900 South Wiley Road
 Crestline, Ohio 44827

Injection Molding & Extrusion Lines

- (23) Injection Molders as late as 2001, 300 ton to 3300 ton
- (9) Extrusion Lines

Sale # 5 Page 10-11
December 20th, 10:00am
 290 McCormick St.
 Lapeer, Michigan 48446

Blow & Injection Molding

- (11) Cincinnati, Sterling, & Uniloy Blow molders as late as 1998
- Dual Heads up to 50lb Shots
- (4) Injection Molders

See Auction Information, Terms and Conditions on page 11 of this brochure

Sale # 1
December 12th, 10:00am

985 Falls Creek Drive
 Vandalia, Ohio 45377

Injection Molding & Toolroom

- (23) Injection Molders as Late as yr 2002
- 33 ton to 750 ton



BATTENFELD 750 TON INJECTION MOLDING MACHINE



BATTENFELD MODEL BKT 4800/2500 530-TON INJECTION MOLDING MACHINE



HPM MODEL MLH 44-48 440-TON INJECTION MOLDING MACHINE



BATTENFELD MODEL BA800 CDC 88-TON INJECTION MOLDING MACHINE



BATTENFELD MODEL BM2000/400+400BK 220-TON INJECTION MOLDING MACHINE

Injection Molders

- Battenfeld BA400CDC 44-Ton S/N CC4092546571 (1994); 2.12 Oz. Shot Unilog 2040 Controls
- Battenfeld BA400CDC 44-Ton S/N CC40926416655 (1994); 2.12 Oz. Shot Unilog 2040 Controls
- Battenfeld BACD 500/200 55-Ton S/N A500567016 (1990); 3.7 Oz. Shot Unilog 2040 Controls
- Battenfeld BA400/125CDC 44-Ton Injection S/N CC40940619176 (1996); 4.72 Oz. Shot Unilog 2040 Controls
- Battenfeld BA1800/1000 BK 220-Ton S/N 52526 (1997); 15.56 Oz. Shot Unilog 4000 Controls
- Cincinnati 200-50 220- S/N 4037A21186-4 (1986); 20 Oz. Shot
- Battenfeld BA950 CD 110-Ton S/N 13966A950511112, (1996); 5.04 Oz. Shot Unilog 2040 Controls;
- Battenfeld BA CDC 800/315 88-Ton S/N CC80907416119, (1994); 8.168 Oz. Unilog 2040 Controls
- Battenfeld BA CDC600/200 66-Ton S/N CC60939619212 (1996); 3.17 Oz. Shot Unilog 2040 Controls
- Battenfeld BA 2000/1000 CDC 220-Ton S/N C200932618989, (1996); 15.5 Oz. Shot Unilog 4000 Controls
- Battenfeld BKT 2000/630 220-Ton S/N 50124, (1995); 11.35 Oz. Shot Unilog 4000 Controls
- Battenfeld BM2000/400+400BK 220-Ton S/N 55261, (2000); 7.32 Oz. Shot Unilog 9000 Controls
- Battenfeld BA CDC 600/200 66-Ton S/N CC60907314984, (1993); 3.37 Oz. Shot Unilog 4000 Controls
- Battenfeld BA 300/E 100 33-Ton S/N 300/0170418136, (1998); 1.6 Oz. Shot Unilog 1000 Controls
- Battenfeld BA800 CDC 88-Ton S/N 0080938517832, (1995); 6.53 Oz. Shot Unilog 2040 Controls
- Battenfeld BKT 4800/2500 530-Ton (1995); 48 Oz. Shot Unilog 4000 Controls;
- Battenfeld BAT 4400/4000 440-Ton S/N 44419BA T 400 400U4000, (1995); 80.40 Oz. Shot Unilog 4000 Controls;

- Battenfeld BKT 200/630 220-Ton S/N 501132, (1995); 11.35 Oz. Shot Unilog 4000 Controls;
- HPM MLH 44-48 440-Ton S/N 02010 (2002); 48.25 Oz. Shot Barber Colman Model Command 4500 Injection Controls
- Battenfeld 45 750- S/N 46640BA-T650014000 U4000, (1995); 84 Oz. Shot Unilog 4000 Controls;
- Battenfeld BA300/E 100 33- S/N 100/300/01/04/8/35, (1988); 1.6 Oz. Shot
- Battenfeld BA950 CD Plus 110-Ton S/N 895 0204 025 12609, (1990); 5.04 Oz. Shot Unilog 2040 Controls
- Battenfeld BA800/E15 CDC 88-Ton S/N CC80923821500, (1998); 8.17 Oz. Shot Unilog Controls

Plastics Support

- Dryers-Conveyors-Temperature Controllers
- Over (100) Fryers, Temperature Controllers, Conveyors, Vacuum Loaders, Hoppers, & pumps by: Conair, Comet, Mokon, Athena

Quality Control and Lab

- Envirotronics Boot Test Machine; -35°C to Estimated 110°C, 5,000 rpm
- Envirotronics Boot Test Machine; 110°C Maximum Temperature, 5,000 rpm
- Mitutoyo PH350 13" Optical Comparator
- Sigma HF600 25" Optical Comparator
- Numerex 2828-18 MNL Ceramic Bridge-Type Coordinate Measuring Machine
- United SSTN-1 E Hardness Tester, S/N 0201508
- CSI MF12 Melt Flow Indexer Test Machine
- EST Company Stereo Microscope
- Denver Instrument Company Model Mark II Moisture Analyzer



BATTENFELD MODEL BKT 2000/630 220-TON INJECTION MOLDING MACHINE



BATTENFELD MODEL BA CDC 800/315 88-TON INJECTION MOLDING MACHINE



BATTENFELD MODEL BA400CDC 44-TON INJECTION MOLDING MACHINE



MILLTRONICS MODEL PARTNER ML17 17" X 36" CNC LATHE



CAT 15,000 LPG FORKLIFT



POLYMER 25HP GRANULATOR

Blow Molding

Hayssen Econablow 250-gm S/N X1105729

CNC Toolroom & Machine Shop Equipment

- Milltronics Partner ML17 17" x 36" CNC Lathe, S/N 5046 (1998)
- Milltronics Partner MB20 CNC Vertical Milling Machine, S/N 5586 (1999) Centurion No.6 Control
- Kent SGS-1224AHD Surface Grinder, (1999)
- Belmont Industries Inc. Maxicut 16" x 30" Electrical Discharge Machine
- Milltronics RH30 CNC Vertical Milling Machine, S/N 6715 (2001) Centurion No.6 CNC Control
- Ex-Cell-O 251 Counter Sync Ram Type Electrical Discharge Machine
- Nardini MS 1440 E 14" x 40" Engine Lathe
- Harig 612 Hand Fed Surface Grinder
- K.O. Lee Hand Fed Surface Grinder
- Select 1430J 14" x 30" Engine Lathe
- Dake 988001 16" Throat Vertical Band Saw
- Bridgeport Vertical Milling Machine Model J 1-1/2 hp
- (2) Seiki VS 4VH Vertical Milling Machines (1997 & 1998); 3 hp
- Willon 3522 16" Horizontal Band Saw
- Wilton 5211001 4' Arm x 11" Column Radial Arm Drill
- Elox HRP 64 Electrical Discharge Machine
- Lincoln Electric AC/DC 225/125 Arc Welder
- Lincoln Electric Square Tig 275 275-Amp Arc Welder
- Hobart Handler 120 120-Amp Arc Welder
- Coffing 3-Ton Jib and Post Crane
- Hurco CNC KM31M CNC Vertical Milling Machine

Plant Support

- Infrapack Sidewinder 3 Pallet Wrapper
- Accurate TI-500E Digital Platform Scale
- (110) Sections of 9' x 3.6' x 20' Pallet Racks
- Selco V5HD 5' x 4' x 30" Bale Size Downacting Vertical Baler
- Lot of General Plant and Support Equipment, To Include: Employee Lockers; Manual Banders; Tables; Workstations; Tool Boxes; Carts; Shop Vacs; Top-Loading Scales; Zebra Printers; Custom Test Machines, -40° to 100°; Belt/Disc Sanders; Pressure Gauges; Tool Grinders; Granite Surface Plate; Calibrators; Parts Washer; Shop Presses; Dynovac Conveyors; Die Lifts; Plastic Grinders; Vacuum Drives; Miscellaneous Hopper; Miscellaneous Work Cells; Industrial Fans; Employee Cafeteria Equipment; etc.

Granulators

- (3) Polymer Systems 1120SIL 11" x 20" (2005), 25 hp
- Polymer Machinery Corp. 12" x 12"
- Battenfeld Gloucester 1416BP-15 16" x 14" (2000), 15 hp
- Vortex JC10 10" x 15" (1984)

Air Compressors

- Leroi CL50SS Rotary Screw Air Compressor, 50 hp
- Quality Air CP1000-60 Refrigerated Air Dryer
- Joy Twistair 3 Rotary Screw Air Compressor, 75 hp
- Joy Twistair 3 Rotary Screw Air Compressor, 100 hp

Chilling & Cooling

- Carrier 30GT-080-51KA, Cooling Tower
- Hussmann Water Chiller Cooling Tower 53 Ton Capacity
- Conair Reymsa Cooling Towers
- Advantage Power-Tower Cooling Tower
- (2) Chilled Water Tanks

Vehicles

- Ford Taurus
- Trailer
- Box truck

Forklifts & Rolling Stock

- Crown S200 3,500-Lb. Stand On Electric Lift Truck
- Crown RC3020-35 Stand On Electric Lift Truck
- Toyota 5FBE15 2,900-Lb. 3-Wheel Electric Lift Truck, (1999)
- Toyota 5FBE15 2,900-Lb. 3-Wheel Electric Lift Truck, (1999)
- Crown 3000 Series 3,740-Lb. Stand On Electric Lift Truck
- Genie Z.34/22 Self-Propelled Boom Truck
- Kalmar AC ACNR 30BD 3,000-Lb. Stand On Electric Lift Truck
- Cat NRR40 4,000-Lb. Stand On Electric Lift Truck
- Caterpillar LP Gas Lift Truck
- Minuteman PB32036QP Electric Walk-Behind Floor Scrubber
- Gantry Crane, 3 Ton Capacity; Budget Chain Hoist, 3 Ton Capacity; and Pendant Controls

Sale # 1

December 12th, 10:00am

985 Falls Creek Drive
Vandalia, Ohio 45377

Injection Molding & Toolroom

- (23) Injection Molders as Late as yr 2002
- 33 ton to 750 ton

This brochure is a partial listing only. See complete listing and details online.



MILLTRONICS MODEL RH30 CNC VERTICAL MILLING MACHINE

Sale # 2

December 13th, 10:00am

8707 Samuel Barton Drive
Belleville, Michigan 48111

Injection Molding & Support

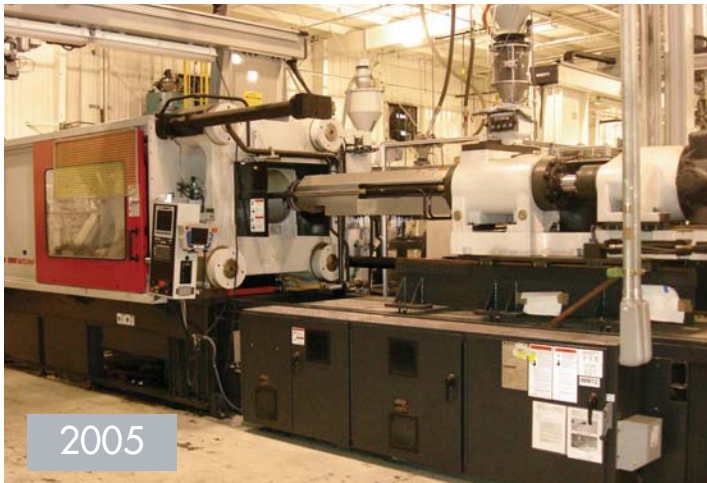
- (16) Injection Molders as late as 2005
- 110 ton to 1500 ton



NISSEI MODEL TB150R18ASE 110-TON ROTARY VERTICAL INJECTION MOLDING MACHINE



VAN DORN MODEL 1500-RS-260F-CV-LP 1,500-TON DOUBLE-SHOT INJECTION MOLDING MACHINE



CINCINNATI MILACRON MODEL MM725 105 725-TON DOUBLE-SHOT INJECTION MOLDING MACHINE



HPM MODEL MLH1100WP-160 1,100-TON INJECTION MOLDING MACHINE

(17) Injection Molders

- Nissei Model TB150R18ASE 110-Ton Rotary Vertical Injection Molding Machine, S/N T15T003, (1998); with NC9300T Control
- Cincinnati Milacron Model MM725 105 725-Ton Double-Shot S/N H44A0200014, (2005); 105 Oz. Xtream ST Control
- Van Dorn Model 700H-RS-125F-LP-CV-PC 700-Ton Injection S/N 397 (1987); 125 Oz. Pathfinder 5000 Control
- Van Dorn Model 700-RS-125F-CV-LP 700-Ton S/N 649 (1993); 125 Oz. Pathfinder Control
- Van Dorn Model 700-RS-100 700-Ton S/N 700RS-100-125; 80 Oz.
- Van Dorn Model 300-RS-30F-VV-HT 300-Ton S/N 300RS-30F-HT2086 (1989); 30 Oz. CRT Pathfinder Control
- Van Dorn Model 300-RS-30R-VV-HT 300-Ton HT Series S/N 2103, (1989); 30 Oz. CRT Pathfinder Control
- Van Dorn Model 300-RS-30F-VV-HT 300-Ton HT Series S/N 2110 (1989); 30 Oz. CRT Pathfinder Control
- Van Dorn Model 300-RS-30F-HT 300-Ton HT Series S/N 2185, (1990); 30 Oz. CRT Pathfinder Control
- Cincinnati Milacron Model 1000-165W/P 1,000-Ton S/N 3961A01/85-3 (1985); 165 Oz.
- Cincinnati Milacron Model 1000-165W/P 1,000-Ton S/N 3961A01/85-2, (1985); 165 Oz.
- Cincinnati Milacron Model 1000-165W/P 1,000-Ton S/N 3961A01/85-4, (1985); 165 Oz.
- Van Dorn Model 1000H-RS-165F-LP-CV 1,000-Ton S/N 263 (1989); 165 Oz. Advantech Control
- Van Dorn Model 1500-RS-260F-CV-LP 1,500-Ton S/N 160 (1990); 260 Oz. Pathfinder 5000 Control
- HPM Model MLH1100WP-160 1,100-Ton S/N 98092, (1998); 160 Oz. Command 9000 Control
- HPM 1,500-Ton 260 Oz.
- HPM 150-Ton S/N 79221

Granulators

- Granutec Model TFG-1624-50 16" x 24" 3-Blade Granulator, S/N 498-3213, (1998), 50 hp
- Nelmor Model G12295 12" x 29" Granulator, S/N 86-11-25087, (1986), 15 hp
- Nelmor Model G12295P 12" x 29" Granulator, S/N 94-02-733125, (1994), 15 hp
- Nelmor Model G12295M1 12" x 29" Granulator, S/N 870125086, (1987), 15 hp

Robots

- Star TW-1700 II ER Robot w/ STEC-31S Control
- Star TW-1700BM Robot; w/ Stec-311MC Control
- (6) Conair Sepro 12 PIP 3051 BB & BZ Robots (1998 to 2000); with Sepro Model S900-II Control
- Conair Sepro P11808 Robot, (2005); w/ Sepro Visual Control

Temperature Controllers & Portable Chillers

- Over (100) Temperature Controllers by Gammaflux, Thermal Care, Sterlco, Ultimate, Husky & Plastic Engineering

Blender

- Maguire NCS-10-MI Weigh Scale Blender, S/N 20160-4681, (2000)

Silos & Resin Pumps

- 178,000-Lb. Silo
- 162,000-Lb. Silo
- 250,000-Lb. Silo
- 230,000-Lb. Silo
- (5) Conair PB10 Vacuum Pumps and Filters
- (3) Mould-Tek & Nucon Vacuum Pumps

Resin Dryers

- (13) Dryers by Conair, Mould-Tek, Conair, Whitlock, & AEC

Machine Shop & Maintenance

- Dake Model V-40 Vertical Band Saw, (1985)
- Alliant Model 48VC Vertical Milling Machine
- Boyar-Schultz Model HR618 Surface Grinder
- Rigid 1224 Pipe Threader
- Leblond Makino Model Regal Engine Lathe
- Miller Millermatic 300 300-Amp Welder (2000)
- Miller Dialarc H 100-Amp Welder
- Wellsaw Model 8 Horizontal Band Saw
- Miller Dialarc 250 250-Amp Welder
- Tai Piin TPR-1230 Radial Arm Drill
- Econoline Shot Blast Cabinet
- Lot of Miscellaneous Maintenance Equipment: Fanuc Robot; Double-End Grinder; Vise; Snow Blower; Parker Hydraulic Bending Unit;

Bridge Cranes

- Mt. Clemens Crane 20-Ton Double-Girder Bridge Crane; 35' Span; with Demag 10-Ton Capacity Hoist
- Michigan Crane 10-Ton Single-Girder Bridge Crane, 35' Span, Top Riding; with 10-Ton Capacity Hoist

Chilling & Cooling

- Application Engineering Model T3700D 400-Ton Cooling Tower (1997)
- (2) 200-Ton Application Engineering Cooling Towers
- Application Engineering Chiller
- (3) 35-Ton Application Engineering Cooling Towers

Belleville, Michigan Over 700 Lots



1993
7 349PM
VAN DORN MODEL 700-RS-125F-CV-LP 700-TON INJECTION MOLDING MACHINE



1 OF 2
STAR AUTOMATION MODEL TW-1700BM ROBOT



NELMOR MODEL G12295P 12" X 29" GRANULATOR, 25HP



2000
7 242PM
GARDNER DENVER MODEL EAQ99K ROTARY SCREW AIR COMPRESSOR, 100HP



1 OF 2
MT. CLEMENS CRANE 20-TON DOUBLE-GIRDER BRIDGE CRANE; 35' SPAN



SCHRECK MODEL RDH 40,000-LB. DIE HANDLER



7 359PM
ROYAL MODEL T300B 30,000-LB. LP GAS LIFT TRUCK



MOULD TEK DRYER SYSTEM

Sale # 2

December 13th, 10:00am

8707 Samuel Barton Drive
Belleville, Michigan 48111

Injection Molding & Support

- (16) Injection Molders as Late as 2005
- 110 ton to 1500 ton



NUMEROUS SEPRO ROBOTS



NUMEROUS CONAIR DRYERS

Air Compressors

- Gardner Denver EAQ99K Rotary Screw Air Compressor, (2000), 100 hp
- Gardner Denver Auto-Sentry Rotary Screw Air Compressor, (1995), 100 hp
- Gardner Denver Refrigerated Air Dryer, (1998)

Vehicles

- 1999 Taurus Model SE Sedan

Forklifts & Rolling Stock

- Schreck RDH 40,000-Lb. Die Handler (1994)
- Toyota 42-FGCU30 6,000-Lb. LP Gas Lift Truck, (1998)
- JLG 33HA 500-Lb. Personnel Lift
- (2) Mitsubishi FGCK30-1 LP Gas Lift Trucks
- 750-Lb. Scissor Lift
- Royal T300B 30,000-Lb. LP Gas Lift Truck
- Lift Rite Model L-68 2,000-Lb. Die Lift

Quality Control & Lab

- Triology Machine Corp. BK-600 Coordinate Measuring Machine, (1989)
- Gage Master 14" Optical Comparator
- Instron 4202 Tensile Tester
- Xerox 2150 Plotter
- Kayenes Melt Flow Indexer
- Arizona Instrument Computrac Max-2000 Moisture Analyzer
- Mettler Toledo Model AE200 Scale
- Toledo 831-1541-FC 6,250-Lb. Scale
- Starrett Granite Surface Plate
- Lot of Inspection Equipment: Hios Model HDP-50 Inspection System, (2005); Hios Model HDP-50 Inspection System, (2002); DVT Inspection Systems, (2005)

Plant Support

- Sterling A20 Scale
- Fox Model 48 Baler
- (2) Label Printers
- Lot of Pallet Racking, To Include: Metal Tabbed Pallet Racks
- Lot of Factory and Support Equipment, To Include: Fans; Desks; Pallet Trucks; Vices; Grinders; etc.
- Lot of Office Furniture and Business Machines, To Include: File Cabinets; Desks; Shelves; Printers; Faxes; etc.
- Lot of Computer Equipment, To Include: Flat Panel Monitors; Dell Pentium IV Computers; Dell Poweredge 1400 SC Pentium III Server; IBM Model X-Series 225 Server; etc.

This brochure is a partial listing only. See complete listing and details online.

Sale # 3

December 14th, 10:00am

3131 Columbus Road, NE
Canton, Ohio 44705

Blow Molding & Support

- (19) Cincinnati, Sterling, & Uniloy Blow Molders as late as 1998



STERLING MODEL DUAL 10 2-HEAD SINGLE-SCREW BLOW MOLDING MACHINE



STERLING MODEL DUAL 10 2-HEAD SINGLE-SCREW BLOW MOLDING MACHINE

Blow Molders

Sterling Dual 10 2-Head Single-Screw Blow Molding Machine, S/N 17945 (1993), 100 hp; 600 Lbs./Hour, 15 Lb. Shot Maco Model 8000 Control

Sterling Dual 10 2-Head Single-Screw Blow Molding Machine, S/N 09525 (1994), 100 hp; 600 Lbs./Hour, 10 Lb. Shot, Maco Model 8000 Control

Hartig Model Dual 4 2-Head Single-Screw Blow Molding Machine, S/N 0379 (1972); 400 Lbs./Hour, 6 Lb. Shot, Maco Model 6000 Control

Modern Machinery Model Omni D7BM 2-Head Single-Screw Blow Molding Machine, S/N M712, (1990); 750 Lbs./Hour, 7.5 Lb. Shot, Maco Model 8000 Control

Moretti/Uniloy Model Moretti 2-Head Dual-Screw Blow Molding Machine, S/N M100L-724 (1991), 100 hp; 800 Lbs./Hour, 16 Lb. Shot, SOS-T Control

Sterling Model Dual 8 2-Head Single-Screw Blow Molding Machine, S/N 7710, (1992), 100 hp; 600 Lbs./Hour, 8 Lb. Shot, Maco Model 8000 Control

Uniloy/Bantam Model 5D35-3434 2-Head Single-Screw Blow Molding Machine, S/N 3883, (1988), 125 hp; 600 Lbs./Hour, 5 Lb. Shot, Maco Model 8000 Control

Uniloy/Bantam Model 5D35-3434 2-Head Single-Screw Blow Molding Machine, S/N 3883, (1988), 125 hp; 600 Lbs./Hour, 5 Lb. Shot, Maco 8000

Cincinnati Milacron Model T600H 2-Head Single-Screw Blow Molding Machine, S/N B82A01970904 (1998); 600 Lbs./Hour, 8 Lb. Shot, Camac 486C Control

Akron Model 37524R5 1-Head Single-Screw Blow Molding Machine, S/N 2501, (1972), 75 hp; 220 Lbs./Hour; 4 Lb. Capacity Shot, Moog Control

Hartig Model 8 Single Head Single-Screw Blow Molding Machine, S/N 6632, (1972), 75 hp; 475 Lbs./Hour; 8 Lb. Shot, Maco Model 6000 Control

Hartig Model SMP 2-Head Single-Screw Blow Molding Machine, S/N 50-4657, (1988), 75 hp; 350 Lbs./Hour, 3 Lb. Shot, Maco Model 8000 Control

(4) Hayssen Model 50-D-375 2-Head Dual-Screw Blow Molding Machines, S/N 15273, (1981); S/N 14839 (1979); S/N 15441 (1981); and S/N 15504, (1978), 29 hp; 140 Lbs./Hour Capacity, 1.3 Lb. Shot, Hunkar Controls

Hartig Model 8 Pound Shuttle Single Head Single-Screw Blow Molding Machine, 600 Lbs./Hour Capacity, 8 Lb. Shot, Maco 8000 Control

Hartig Model Dual 6 Pound 2-Head Dual-Screw Blow Molding Machine, S/N 50-5678; 6,000 Lbs./Hour Capacity, 6 Lb. Shot Maco 8000 Controls

Uniloy Model Moretti 2-Head Dual-Screw Blow Molding Machine, S/N 766, 800 Lbs./Hour Capacity, 16 Lb. Shot, Maco 8000 Control

Granulators

Cumberland 16" X 24" Granulator, 25 hp

Granotec TFG-1624-50 16" x 24" Granulator, (1994), 50 hp

Granotec TFG-1624-50 16" X 24" Granulator, (1993), 50 hp

Rapid Granulator, 25 hp; 16"H x 24"W

Rapid 1831-K 18" x 31" Granulator, (1992), 75 hp

Nelmor G1220M1 12" x 20" Granulator, (1974), 25 hp

Nelmor G1220M1 12" x 20" Granulator, (1976), 25 hp

Granulator, 15 hp; 15"H x 20"W

Nelmor Granulator 40 hp

Nelmor G1220M1 12" x 20" Granulator, 10 hp

Nelmor Granulator, 25 hp; 17"H x 20"W

Rapid 1418K 14" x 18" Granulator, (1997), 20 hp

(2) Nelmor G1215M1 12" x 15" Granulators

Nelmor G1216M1 12" x 16" Granulator

Nelmor G1220M1 12" x 20" Granulator

Nelmor Granulator, 16" x 24"

Shred Tech ST20 Granulator, 20 hp; 14" x 24"

Rapid 18" x 24" Granulator, 40 hp

Plastics Support

Blenders-Hoppers-Dryers

Over (100) Dryers, Temperature Controllers, Blenders, Portable Chillers, Vacuum Loaders & Resin Pumps by: Conair, Whitlock, Maguire, Hamilton, Mould-Tek, Temptek

Silos

Imperial Industries 3,718-Cubic Foot, 65 Ton

(2) Lift System 4,000-Cubic Foot

(2) 80,000-Lb.

Robots

Kawasaki ZX130UFC32 Pick & Place Robot (2003); 7-Axis

Kawasaki JS040FA75C Robot (1997)

Kawasaki FS1UE Robot (2000)

Air Compressors & Chillers

(2) Ingersoll-Rand Air Cube 75 hp

Sullair LS-25 200L Air Compressor (1998), 200 hp

Van-Air RA-1250 Refrigerated Air Dryer, 7.5 hp

(2) Trane Model CCAC0505MDNER63G3TR 45-Ton Chillers

Carrier 30GA105620 105-Ton Chiller

Trane CA-7508-A Air Cooled Condenser

Quality Control

Systematic Computer Services 12100X155X20/11 Coordinate Measuring Machine, (1996)

Plant Support

Lot of Pallet Racking, Metal Tabbed Pallet Racking

(2) Roach 12" x 4" Powered Rubber Belt Conveyors; with Attached Light Counter

Fans; Vices; Ladders; Hand Tools; etc.

Forklifts & Material Handling

Toyota 42-6FGCU25 5,000-Lb. LP Gas Lift Truck, (1998)

Caterpillar GC18 3,500-Lb. LP Gas Lift Truck (1994)

Toyota 52-6FGCU45 BCS 10,000-Lb. LP Gas Lift Truck, (1998)

Strato-Lift KRX-20 750-Lb. Personnel Lift

(2) Yale ERPS030TFN365E078 3,000-Lb. Electric Lift Trucks

Yale GLC030CENUAE083 3,500-Lb. LP Gas Lift Truck

Yale ERPS030TFN365E078 3,000-Lb. Electric Lift Truck

Toyota 7FGU25 5,000-Lb. LP Gas Lift Truck

JLG CM-2546 Commander 750-Lb. Scissor Lift

Toyota 42 6FGCU15 3,000-Lb. LP Gas Lift Truck, (1997)

Toyota \42 6FGCU15 3,000-Lb. LP Gas Lift Truck, (1998)

Vehicles

2000 Pontiac Grand Prix

1996 Oldsmobile Cutlass Supreme

1998 Freightliner FL60 Box Truck; 14,000 GVW, 24'L

1990 Chevrolet C10 Cargo Van

2002 Appalachian Flatbed Trailer

This brochure is a partial listing only. See complete listing and details online.

Canton, Ohio Over 500 Lots



MIGHTY TURN ENGINE LATHE



CINCINNATI MILACRON MODEL T600H 2-HEAD SINGLE-SCREW BLOW MOLDING MACHINE



NELMOR 40HP GRANULATOR



VIEW OF HAYSEN BLOW MOLDERS



UNILYOY/BANTAM MODEL 5D35-3434 2-HEAD SINGLE-SCREW BLOW MOLDING MACHINE



GRANUTECH 50HP GRANULATOR

Toolroom & Maintenance

- Rockwell 15-665 15" Floor-Type Drill Press
- Walker-Turner 1143-41 Floor-Type Drill Press
- Jet HBS-712 7" x 12" Horizontal Band Saw
- Ridgid 535 Pipe Threader
- Lincoln Power Mig 255 Mig Welder (1999)
- Lincoln Idealarc 250 250-Amp Arc Welder
- Lincoln DC250MK 250-Amp Arc Welder
- Lincoln SP-100 100-Amp Arc Welder, (1994)
- Dayton 170,000-Btu Portable Oil Fired Heater
- Approximately 6' x 8' Welding Table
- Schumacher 30/60/300 Fast Charger Starter Charger
- Craftsman 24" Snow Blower
- (5) 9' x 42" x Approximately 15'H Medium Duty Metal Pallet Racking
- 15'W x 8'H Cantilever Racking
- Lincoln Idealarc 250-Amp Arc Welder
- Baldor 2" Capacity Belt Grinder
- Black & Decker 14"D Abrasive Cut-Off Saw
- Baldor 4"D Double-End Grinder
- Makita Model 2414B 14"D Abrasive Cut-Off Saw
- Dayton 6"D Capacity Double-End Grinder
- Rong Fu FMT-10000C Floor-Type Drill Press
- Rockwell 70-400 Floor-Type Drill Press
- Gorton 2-30 Vertical Milling Machine, 3,500 rpm
- Roll-In 12" Vertical Band Saw; with 20" x 30" Worktable
- Rockwell 86-520 12"D Disc Grinder
- Everett 8-7 8"D Abrasive Cut-Off Saw
- Cincinnati 15 15" x 54" Engine Lathe,
- Mighty Turn ML-1860GL 18" x 60" Engine Lathe
- Bridgeport Vertical Milling Machine, 1-1/2 hp
- Bridgeport Vertical Milling Machine, 1 hp
- Rockwell 28-340 20" Vertical Band Saw
- Rockwell 438-02-314-0186 4"D Pedestal-Type Double-End Grinder
- KO Lee B300 Tool & Cutter Grinder
- Reid 6" x 18" Surface Grinder



ROTOGRAN GRANULATOR

- Rockwell 3T 6" x 24" Radial Arm Drill
- Dake 50H 50-Ton H-Frame Press
- Coffing 2-Ton Chain Hoist; with Pendant Control
- Miller Syncrowave 350 LX 350-Amp Welding Power Source (1998)
- Delta Vertical Band Saw (1986)
- Cyclone Shot Blast Cabinet; 26"W x 22"H x 26"D
- Delta Vertical Band Saw



NUMEROUS KAWASAKI ROBOTS

Sale # 3
December 14th, 10:00am

3131 Columbus Road, NE
Canton, Ohio 44705

Blow Molding & Support

- (19) Cincinnati, Sterling, & Uniloy Blow Molders as late as 1998



NUMEROUS MAGUIRE BLENDERS

Sale # 4

December 19th, 10:00am

900 South Wiley Road
Crestline, Ohio 44827

Injection Molding & Extrusion Lines

- (23) Injection Molders as late as 2001, 300 ton to 3300 ton
- (9) Extrusion Lines



CINCINNATI 880 TON WIDE PLATEN



38 CINCINNATI MILACRON MODEL VL-1500-179
1,500-TON INJECTION MOLDING MACHINE



CINCINNATI MILACRON MODEL VL3000-414 3,000-TON INJECTION MOLDING MACHINE



1650 TON INJECTION MOLDING MACHINE



ENGL E MODEL ES2051350/300TLCC100-A03 300-TON INJECTION MOLDING MACHINE

Injection Molders

- Cincinnati MM880-179 880 Ton Wide Platen, X-Stream Controls (2005), ties bars extended to 920 ton capacity
- Nissei FN 9000 620-Ton, (1998)
- Nissei FV 9100 720-Ton, (1998)
- Van Dorn-Demag 500-HP-RS-80F-LP, 80 oz. s/n 0729, Pathfinder 1000 Controls (1994)
- Nissei FN 6000 300-Ton, (1997)
- Cincinnati Milacron VL3000-414 3,000-Ton s/n 3926A219007 (1993) 414 oz, Shot Camac VL Control
- Cincinnati Milacron H1500-165, 1,500-Ton s/n 3966-A01/91-1, (1991), 165 oz., Shot Camac CE Control
- Van Dorn 500H-RS-60F 500-Ton s/n 384, (1984), 60 oz. Shot, Pathfinder Control
- Van Dorn 450-RS-60F 450-Ton s/n 565, 60 oz. Shot SCI Control
- Van Dorn 450-RS-60F 450-Ton, s/n 566, 60 oz., Shot SCI Control
- Van Dorn 500-RS-60F 500-Ton s/n 0724, (1994), 60 oz. Shot, Pathfinder 1000 Control
- Van Dorn 500H-RS-60FLPVVCV 500-Ton s/n 479 (1986), 60 oz. Shot, Epcoc E-4000 Control
- Van Dorn 700H-RS-80F-CV-V 700-Ton s/n 368, (1986), 80 oz. Shot, Tap Finder/RJG Control
- Engle ES2051350/300TLCC100-A03 300-Ton (2001), 20 oz. Shot
- Van Dorn 300-RS-30F 300-Ton s/n 960, (1997), 30 oz.
- Van Dorn 500H-RS-60F-CV-LP 500-Ton s/n 581 (1988), 60 oz. Shot, SCI Control
- Nissei FN7000 398-Ton s/n S-36T010 (1998), 39 oz. Shot
- Cincinnati 005421/79-35 500-Ton s/n 005421/79-35, 48 oz. Shot, PC II Control
- Cincinnati 700-Ton s/n 4007W705V-4, 70 oz. Shot, Allen-Bradley SLC 500 Control
- Cincinnati 500-Ton s/n 4005S485Y22, 60 oz. Shot, Allen-Bradley Model SLC 500 Control
- Cincinnati Milacron VL-1500-179 1,500-Ton s/n H23A0193001 (1993), 179 oz. Shot, Camac VEL Control
- Van Dorn 700H RS-80FV-CV 700-Ton s/n 371, (1986), 80 oz. Shot, B. Coleman/RJG Control

Robots

- (8) Conair Sepro Model S900-II Robots/ Sepro Control

Granulators

- (3) Granulec TFG-1624-50 16" x 24" (1997 & 1998), 50 HP Granulec Granulator, 75 HP
- Granulator, 10 HP, 14" H x 20" L
- Cumberland 14X20 Granulator, 25 HP
- (2) Cumberland 5GRAN 3KN 12" x 18"
- Cumberland 585 GRAN 3KN 14" x 20"

Extrusion Lines & Downstream Support Equipment

**Numerous pieces of support & downstream equipment not listed in this brochure*

- NRM Model 4-1/2 Pacemaker 70 4.5" Extruder, s/n 10664, (1964), 75 HP, 7-Zone, 3-Screw, Water Cooled, 24:1 L/D Ratio, 25.14:1 Gear Ratio
- Davis-Standard Model MV 201N20 2" Extruder, s/n V4531, (1997), 20 HP, 3-Zone, 2-Screw, Air Cooled, 24:1 L/D Ratio, 17.56 Gear Ratio; w/ Eurotherm 6-Unit Control, Thoreson McCosh 240-Lb. Capacity Collection Hopper, Loader, and IMS Model HAB751; (1) Davis-Standard Model DS15H 1.5" Extruder, s/n V4527, (1997), 10 HP, 4-Zone, 2-Screw, Air Cooled, 24:1 L/D Ratio, 12.80:1 Gear Ratio
- NRM Model 1.25 1.25" Extruder, s/n 18821, (1989), 5 HP, 3-Zone, 2-Screw, Air Cooled, 24:1 L/D Ratio, 15.13:1 Gear Ratio w/ Eurotherm Model 808 5-Unit Control; Conair Model 18002605 100-Lb. Capacity Collection Hopper and Loader; (1) Akron Model PAK-200 2" Extruder, s/n 0012, Asset #1031, (2000), 25 HP, 3-Zone, 2-Screw, 24:1 L/D Ratio, 14.1:1 Gear Ratio
- Davis-Standard Model 25 IN 25 2.5" Extruder, s/n J8864, (1985), 40 HP, 4-Zone, Single Screw, 24:1 L/D Ratio, 17.26:1 Gear Ratio w/ 100-Lb. Capacity Hopper; Loader and HES System 301 7-Unit Control; (1) Davis-Standard 2.5" Extruder, s/n 05078, (1991)
- NRM Model 3-12 24.1 PM III 3.5" Extruder, s/n 18002, Asset #1037, (1981), 75 HP, 5-Zone, 2-Screw, Air Cooled, 24:1 L/D Ratio, 24.89:1 Gear Ratio w/ 6-Unit Control, Conair Loader, 300-Lb. Capacity Hopper, Conair Vacuum Conveying System and IMS Model MD-100 Hopper Dryer; (1) NRM Model 2-12 PM III 24.1 2.5" Extruder, s/n 16012, Asset #1038, (1974), 40 HP, 4-Zone, Single Screw, Air Cooled, 24.1:1 L/D Ratio, 16.95:1 Gear Ratio
- NRM Model 3-12 PM 70 EXTR 24.1 L/D 3.5" Extruder, s/n 14327, Asset #509-1028, (1971), 24:1 L/D Ratio, 6-Zone, Non-Vented Barrel, 13.9:1 Gear Ratio
- Davis-Standard Model Gemini GC-6 HD 60mm Extruder, s/n L-3739, 3-Zone, 4-Die, Vented Barrel, 17.5:1 Gear Ratio
- Davis-Standard Model GC-8HD 80mm Twin-Screw Extruder, s/n L-9726, Asset #508-1025, (1991), 40 HP, 9-Zone, 4-Die Vented Barrel, 17.4:1 Gear Ratio w/ Eurotherm 808 Controls, Thoreson McCosh Collection Hopper, w/ Vacuum Loader, and Secondary Resin Infeed, and Thoreson McCosh Multi-Color Metering Unit Model MC1, s/n 971101006, (Screws Rebuilt 2002); (1) Davis-Standard Model Mark 5 2.5" Extruder, s/n J-8864, (1991), Single Screw, 6-Zone, 4-Die, Non-Vented Barrel, 24:1 L/D Ratio, 17.26:1 Gear Ratio
- Davis Standard Model Thermatic II (350 II F-6251) 3.5" Triple-Screw Extruder, s/n E4040, Asset #510-1024, (1973) 100 HP, 5-Zone, Non Vented, 24:1 L/D Ratio, 17.39 Gear Ratio w/ Thoreson McCosh 480-Lb. Capacity Collection Hopper, w/ Vacuum Loader, and IMS Model MC-100 Hopper Dryer, (Rebuilt Screw 1999); (1) Davis-Standard Model Foamaster (E-5157 2505 ID) 2.5" Dual Screw Extruder, s/n L-3882, Asset #511-1023, (1973), 40 HP, 6-Zone, Single Die, 17.26:1 L/D Ratio

Plastics Support

Temperature Controllers-Hoppers-Conveyors

- Oyer (200) Dryers, Temperature Controllers, Vacuum Loaders, Chillers, Blenders, Hoppers by: Conair, IMCS, AEC, Aquatherm, Plastic Engineering, Sterlco, Gammaflux, Gordinier, ITC
- (6) Conair Weigh-Scale Blenders

Lab & Quality Control

- Optical Gaging Products QL-30C 30" Optical Comparator
- Zeiss Contura Select 700 Coordinate Measuring Machine
- Lehmann/Thropp 4X8 4" x 8" Lab-Type Rubber Mill
- Tinius Olsen Extrusion Plastometer
- Harshaw 22 Environmental Chamber
- Brabender PL5000 Plastometer
- PHI 0230C-X4B 30-Ton Platen Press (1999)
- Delta 038257 12" Vertical Band Saw
- Blue M OV-510A-2 Lab Oven
- So-Low PR50-7 Environmental Chamber
- Despatch Lab Oven
- Monsanto Tensometer 10 2,000-Lb. Tensile Tester
- Rice Lake 700 10,000-Lb. Platform Scale
- Mitutoyo BRTA1220 (4010M-3212) Coordinate Measuring Machine (1999)
- Lot of Laboratory Equipment to Include Scales, Balances, Microscope, Furnace etc.

Air Compressors

- Ingersoll-Rand HG750 750-psi Compressed Air Dryer, (1988)
- Ingersoll-Rand SSR-2000 Rotary Screw Air Compressor
- Quincy QSE-245 Rotary Screw Air Compressor, (1994)
- Gardner-Denver EAUSPD Reciprocating Air Compressor, (1998), 100 HP
- Airtek SC1000 200-psig Compresses Air Dryer, (1994), 5 HP

Cranes

- (2) Michigan Crane 10-Ton Double-Girder Bridge Cranes; 35' Span, Top Riding w/ Black-Bear Dual 10-Ton Hoist
- North American Industries 40-Ton Double-Girder Bridge Crane, 35' Span, Top Riding w/ (2) Chain Hoists
- (2) Michigan Crane 10-Ton Double-Girder Bridge Cranes, s/n 03-5031; 30' Span x Approximately 300' Run, Service Class C w/ 10-Ton Capacity Top Rail Riding
- Conrux Crance Model B11012-SP 1/2-Ton Jib and Post Crane, s/n 26923, Approximately 10' Post x 12' Jib w/ 1/2-Ton Capacity
- 40-Ton Double-Girder Gantry Crane, 20' Span x Approximately 25' H w/ Stahl Top Rail Riding

Crestline, Ohio Over 1000 Lots



1998
NISSEI FN 9000 620-TON INJECTION MOLDER



1 OF 8
NUMEROUS SEPRO ROBOTS



AEC WHITLOCK DRYERS



OVER 12 EXTRUDERS
(9) EXTRUSION LINES & DOWNSTREAM EQUIPMENT



6 BRIDGE CRANES
40 TON BRIDGE CRANE



CAT 15,000LB FORKLIFT

Toolroom & Maintenance

Sodick A320S Electrical Discharge Machine (1993)
Ridgid 535 Pipe Threader
Lincoln Idealarc SP-200 200-Amp Welder (1985)
Lincoln Idealarc Tig-300 300-Amp Welder (1979)
Dayton 2AC29 Vertical Band Saw
Johnson J Horizontal Band Saw
Bridgeport Series 1 Vertical Milling Machine
MHT MSG-250MH Surface Grinder, (1988)
Leblond Makino 15 Regal Engine Lathe
Nardini ND 1560E Engine Lathe
Clausing 2276 Drill Press
Kent 8x16 Surface Grinder
K.O. Lee S714 Surface Grinder
South Bend A Precision Engine Lathe
DoAll DBW-12B Vertical Band Saw
Bridgeport Vertical Milling Machine, 1 HP
DoAll DBW-1A Vertical Band Saw,
Ex-Cell-O Vertical Milling Machine
Bridgeport Model Series I Vertical Milling Machine, 2 HP
Kondia FV-1 Vertical Milling Machine
Cyclone Shot Blast Cabinet
Lincoln Idealarc Tig-300/300 300-Amp Welder
Miller Sidekick 20-Amp Welder
Delta 28-2435 14" Vertical Band Saw

Plant Support

2,000-Lb. Platform Scale, 42" x 42"
(100) Pallet Racking; 8 to 12' W x 42" D x 10 to 15' H, 2- to 3-Tier, Adjustable

Chilling

Emerald FGC502 Chiller
(2) Baltimore Aircoil EXT-200X2400USGPM 200-Ton Cooling Towers, (1997)
(2) Baltimore Aircoil EXT-200X2400USGPM 200-Ton Cooling Towers, (2003)

Silos

(2) Plastics Machinery 60-40-12 x 32-0-High 2,510-Cubic Foot Welded
(2) 9' 3" D x 31' 6" H Welded Steel Silos
Peabody TecTank 2,730-Cubic Foot Welded (1997), 12' D x 36' H
(2) 9' 6" D x 29' 4" H Welded Steel Silos
A.O. Smith 2,850-Cubic Foot Welded Steel Silo, 12' D x 31' H
LPP System 12' D x 43' 8" H Welded Steel Silo
(2) Imperial Industries 2,494-Cubic Foot Welded Steel Silos

Forklifts & Rolling Stock

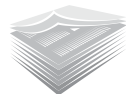
Hyster S50XL 5,000-Lb. LP Gas Lift Truck,
(2) Yale GLP050TGNAE084, 5,000-Lb. LP Gas Lift Trucks, (2000)
Skyjack SJII 3220 750-Lb. Personnel Lift
Rico PLRDHP800E 80,000-Lb. Die Handler (1997)
Caterpillar T150D 15,000-Lb. LP Gas Lift Truck
Yale 8,000-Lb. LP Gas Lift Truck
Yale GLP040AFNUAF084 4,000-Lb. LP Gas Lift Truck, (2001)
Yale GLP040AFNUAF084 4,000-Lb. LP Gas Lift Truck, (2001)
Yale GLP040AFNUAF084 4,000-Lb. LP Gas Lift Truck (1997)
Hyster H200E 20,000-Lb. Lift Truck,
Yanmar UM226D Diesel Tractor 4' W Bucket Attachment, and Lawn Trim Attachment
Toyota 42-6FCU25, 54,000-Lb. LP Gas Lift Truck (1997)
Factory Cat 34 Electric Floor Sweeper
Toyota 7FGCU15, 3,000-Lb. LP Gas Lift Truck
Yale GLC030CFNUAF083, 3,000-Lb. LP Gas Lift Truck
Hyster H40XMS, 4,000-Lb. LP Gas Lift Truck, (1994)
Toyota 5FGC15, 3,000-Lb. LP Gas Lift Truck,
Hyster H25XL 5,000-Lb. LP Gas Lift Truck
Hyster S120SL 12,000-Lb. LP Gas Lift Truck (1998)
Toyota 7FGCU15, 3,000-Lb. LP Gas Lift Truck
Hyster H25XL 5,000-Lb. LP Gas Lift Truck
Hyster S50Y 5,000-Lb. LP Gas Lift Truck
Clark Model TW25B 2,000-Lb Electric Lift Truck, Asset #17, (1997)
(2) Yale GLP050TGNAE084, 5000-Lb. LP Gas Lift Trucks

Vehicles

2001 Ford Taurus
1992 Chevrolet G30 Extended Van
1986 Chevrolet C6000 Conventional Truck
2003 Chevrolet Trailblazer Sport Utility
1995 Chevrolet Lumina LS
1999 Chevrolet Venture Mini Van
John Deere Skid Steer

Stretch Wrapper

(2) Lantech Lan Wrapper Stretch Wrap Machine



Complete Asset Listing and Equipment Specifications Available available on our websites



2004
ZEISS COORDINATE MEASURING MACHINE

Sale # 4

December 19th, 10:00am

900 South Wiley Road
Crestline, Ohio 44827

Injection Molding & Extrusion Lines

- (23) Injection Molders as late as 2001, 300 ton to 3300 ton
- (9) Extrusion Lines

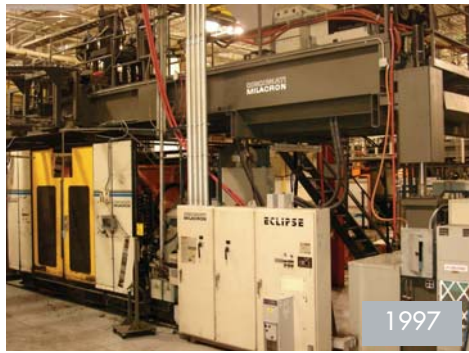
Sale # 5

December 20th, 10:00am

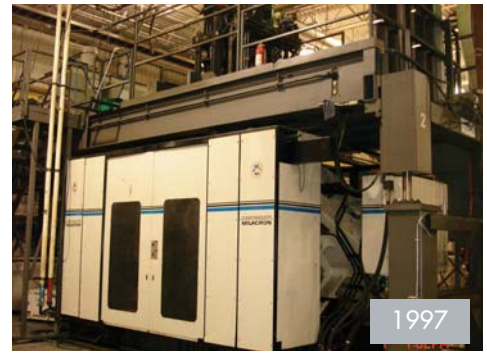
290 McCormick St.
Lapeer, Michigan 48446

Blow & Injection Molding

- (11) Cincinnati, Sterling, & Uniloy Blow molders as late as 1998
- Dual Heads up to 50lb Shots
- (4) Injection Molders



CINCINNATI MILACRON MODEL T2000W-150S-D25C
2-HEAD SINGLE-SCREW BLOW MOLDING MACHINE



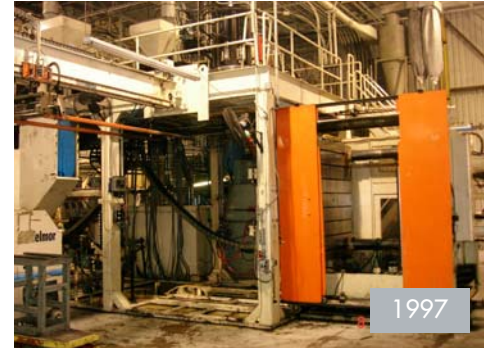
CINCINNATI MILACRON MODEL T3000W-150S-D35C
2-HEAD DUAL-SCREW BLOW MOLDING MACHINE



CINCINNATI MILACRON MODEL T3000W-150S-D35C
2-HEAD DUAL-SCREW BLOW MOLDING MACHINE



STERLING MODEL DUAL 50 2-HEAD DUAL-SCREW, DUAL-CLAMP BLOW MOLDING MACHINE



STERLING MODEL DUAL 50 2-HEAD DUAL-SCREW, DUAL-CLAMP BLOW MOLDING MACHINE



UNILOY MODEL UA250-2H16 2-HEAD DUAL-SCREW
BLOW MOLDING MACHINE



UNILOY MODEL UA250-2H16 2-HEAD DUAL-SCREW
BLOW MOLDING MACHINE



MORETTI/UNILOY MODEL MORETTI M-400 SINGLE
HEAD DUAL-SCREW BLOW MOLDING MACHINE

Blow Molders

Cincinnati Milacron T2000W-150S-D25C 2-Head Single-Screw Blow Molding Machine, S/N B80A0196006, (1997); 25 Lb. Shot Camac 486 Control

Cincinnati Milacron T3000W-150S-D35C 2-Head Dual-Screw Blow Molding Machine, S/N B81A0195001 (1997); 35 Lb. Shot, Camac 486 Control

Cincinnati Milacron T3000W-150S-D35C 2-Head Dual-Screw Blow Molding Machine, S/N B81A0196001, (1997); 35 Lb. Shot TAMA486 Control

Cincinnati Milacron T3000W-150S-D35C 2-Head Dual-Screw Blow Molding Machine, S/N B81A0196001, (1997); 35 Lb. Shot, Camac 486 Control

Sterling Dual 50 2-Head Dual-Screw, Dual-Clamp Blow Molding Machine, S/N 60943 (1998); 50 Lb. Shot Size with Innova System 300 hp Extruding Control Panel & Maco 6000 Control

Sterling Dual 50 2-Head Dual-Screw, Dual-Clamp Blow Molding Machine, S/N 57910 (1997); 50 Lb. Shot Maco-6000 Control

Moretti/Uniloy Moretti M-400 Single Head Dual-Screw Blow Molding Machine, S/N 06 (1990); 35 Lb. Shot Sofcontrol-20 Control

Moretti/Uniloy Moretti M-400 Single Head Dual-Screw Blow Molding Machine, S/N 061991, (1991); 35 Lb. Shot Sofcontrol-20 Control

Moretti/Uniloy Moretti M-400 Single Head Dual-Screw Blow Molding Machine, S/N 02 (1992); 35 Lb. Shot Sofcontrol-20 Control

Uniloy UA250-2H16 2-Head Dual-Screw Blow Molding Machine, S/N 4692 (1996); 35 Lb. Shot Simatic TI505 Control

Uniloy UA175-2H8 2-Head Dual-Screw Blow Molding Machine, S/N 4769, (1997); 25 Lb. Shot Simatic TI505 Control

Injection Molders

Van Dorn 300-RS-14F 300-Ton, S/N 300-RS-14F-68214 Oz. Shot

Van Dorn 450-RS-60F 450-Ton S/N 572, (1977), 75 hp; 60 Oz. Shot

Van Dorn 450-RS-35 450-Ton S/N 231; 35 Oz. Shot

Van Dorn 500H-RS-60F 500-Ton S/N 383, 60 Oz. Shot

Shredders & Granulators

Weima WIK6S (2001), 50 hp

Granulator; 19"H x 30"W; with Sterling Blower

Nelmor Regal 150 hp; 3'H x 3'W

Nelmor 150 hp; 30"H x 38"W

(3) Nelmor Regal Granulator; 3'W x 3'L; with Blower

Nelmor Regal Dual-Position/Mouth 24"W x 46"H

Nelmor G12295M1 12" x 29" (1987), 40 hp;

Graphic 2436-C 24" x 36" (1997);

Rapid 23"H x 42"W

Rapid 1831-KU 18" x 31" (1997);

Rapid 1831-K 18" x 31" (1996);

Plastics Support Equipment

Blenders-Dryers-Resin Pumps-Temperature Controllers

Over (200) Blenders, Loaders, Hoppers-Dryers by: Maguire, Novaytec, Whitlock, Sterlco, AEC

Toolroom & Machine Shop

Rigid 535 Pipe Threader

DoAll DBW-15M Vertical Band Saw

Lincoln Pro-Cut 60 Plasma Cutting System

Powermatic 1200 Vertical Drill Press

Lincoln Power Mig 255 250-Amp Welder (1999)

Lincoln Square Wave Tig-355 350-Amp Welder

Jet JTM-1054 Vertical Milling Machine

Clausing-Metosa Engine Lathe

Wilton 7020 Horizontal Band Saw

Lincoln Power Mig 255 Welder

Rapid 600 Vertical Band Saw

SCMI SC-900 Vertical Band Saw

Bridgeport Vertical Milling Machine

Lot of Miscellaneous Maintenance Equipment, To Include: Double-End Grinders; Saws; Ladders; Shop Presses; etc.

Robots

Yaskawa Motoman MSK120 Robot, (1997)

Yaskawa Motoman YRFL-NNA60SB 60-kg Robot

Motoman YRFL-NNA60SB 60-kg Robot,

Yaskawa Motoman YR-SK16-T000 (1998)

Yaskawa Motoman MSK120 120-kva Robot, (1997)

Bridge Cranes

Continental Crane 5-Ton Double-Girder Bridge Crane; 35'

Span, Top Riding; with 5-Ton Capacity Chain Hoist

Mt. Clemens Crane 14-Ton Double-Girder Bridge Crane; 50'

Span, Top Riding; with 14-Ton Capacity Chain Hoist

Air Compressors

Ingersoll-Rand SSR-EP150 Rotary Screw 150 hp

Ingersoll-Rand SSR-EP100 Rotary Screw 100 hp

Ingersoll-Rand Model SSR-EP150 Rotary Screw 150 hp;

(3) IR Dryers

Plant Support

Fairbanks 10,000-Lb. Platform Scale

Lantech Q-Series Rotary Pallet Wrapper

Sterling Model 80 48"W x 50"L Platform Scale; with Sterling

Model 800-N1 Control, S/N 23595

Lot of Pallet Racking, To Include: (16) 45"W x 82"L x 12'H

Metal Tabbed Pallet Racking

Lot of Factory and Support Equipment, To Include: Pallet

Truck; Fans; Presses; Ladders; Tables; Shelves; etc.

Lot of Office Furniture and Business Machines, To

Include: Printek Formaster 8003 Printer; Reco Model Aficio

1060 Printer/Copier; IBM Model 4234 Dot Printer; Label

Printer; Dot Printers; Tables; Chairs; File Cabinets; etc.

Lot of Computer Hardware and Network Equipment, To

Include: Dell Poweredge 1500SC Server, (2000); Telrad Power

Supply; Bos Twin X Controllers; Muxlab Model Twinstar III

Ports; Linsys Ports; PC's; Laptops; etc.

Lapeer, Michigan Over 500 Lots



1 OF 13 GRANULATORS

NUMEROUS NELMOR HOG GRANULATORS, 40HP TO 150HP



1 OF 6

SEVERAL YASKAWA MODEL MOTOMAN ROBOTS



GENIE Z30/20 BOOM LIFT



YALE 15,000 LB FORKLIFT



VIEW OF PEABODY RESIN STORAGE SILOS



NUMEROUS MAGUIRE BLENDERS & WEIGH SCALES

Silos & Resin Pumps

- (2) 2,420-Cubic Foot Capacity
- (3) Peabody 2,420-Cubic Foot
- Peabody 2,409-Cubic Foot
- (4) Peabody 2,390-Cubic Foot
- Peabody 2,672-Cubic Foot
- (2) Whitlock A Filter Chamber
- Whitlock Model VFCB-225 Filter Chamber
- Whitlock Model VTP10-2 Power Unit 10 hp
- Whitlock 7.5 hp Power Unit

Chillers & Cooling

- Application Engineering WCD-50CST-Q 50-Ton Chiller
- Application Engineering Model WCF-105CST-Q 105-Ton Chiller
- Application Engineering Chiller; with Application Engineering 5'W x 6'L x 6'D Cooling Tank; and Pumps

Quality Control

- Numerex 4064-24 MD CER Coordinate Measuring Machine
- Deltronic 14" Optical Comparator
- Applied Test System ASTM Tensile Tester
- Fisher Scientific Lab Hood
- Fisher Scientific Lab Oven
- Kayeness D7050 Melt Flow Indexer
- AND HR-120 120-gm Laboratory Scale
- Computrac NAX50 Moisture Analyzer
- Fisher-Johns Melting Point Analyzer
- Blue M OV-490A-2 Laboratory Oven
- Spectralight Cabinet
- Mitutoyo Gauge

Sale # 5

December 20th, 10:00am

290 McCormick St.
Lapeer, Michigan 48446

Blow & Injection Molding

- (11) Cincinnati, Sterling, & Uniloy Blow molders as late as 1998
- Dual Heads up to 50lb Shots
- (4) Injection Molders

Forklifts

- Yale GC150SB5096 15,000-Lb. LP Gas Lift Truck
- Tennant 5700 Floor Scrubber
- Raymond E3ST-40-34-136-4 2,000-Lb. Low-Lift Lift Truck
- Raymond 3,000-Lb. Low-Lift Lift Truck

(5) Live On-Site & Webcast Auctions

BY ORDER OF UNITED STATES BANKRUPTCY COURT NORTHERN DISTRICT OF OHIO, EASTERN DIVISION CASE NO. 06-51848, (JOINTLY ADMINISTERED), CHAPTER 11



**Creative Engineered
Polymer Products**

(5) Complete Facility Closures

Located throughout Michigan & Ohio

Directions To Auction Sites, Hotels & Airports:

Consult our webpage and your local travel agent

Buyers Premium

- A Buyers Premium will apply

Terms of Sale

- All items are sold "as is, where is", with no warranties or representations either expressed or implied.
- Complete Terms & Conditions may be viewed @ www.BIDITUP.com & www.theBranfordGroup.com

Bidding Options

- Bid Live in Person On-Site @ each CEP location
- Bid live via the webcast at www.thebranfordgroup.com or www.biditup.com
- Bid via proxy/absentee bid

Payments

- All Sales will be conducted in US dollars
- Cash, Certified Funds, Wire Transfer, Company Check with a Bank letter

Auction Team



896 Main Street
Branford, CT 06405
www.TheBranfordGroup.com
203-488-7020
fax 203-488-4577



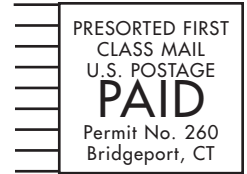
11426 Ventura Blvd.
Studio City, CA 91604
Phone 818.508.7034
Fax 818.508.3025
www.BIDITUP.com

Auction License

Biditup Auctions Worldwide Inc. 2005000218
and Mattes, Steven R 2005000217



896 Main Street
Branford, CT 06405



FIRST CLASS MAIL
FORWARDING SERVICE REQUESTED

(5) Live On-Site & Webcast Auctions

Major Tier 1 Automotive Plastic & Rubber Parts Manufacturer

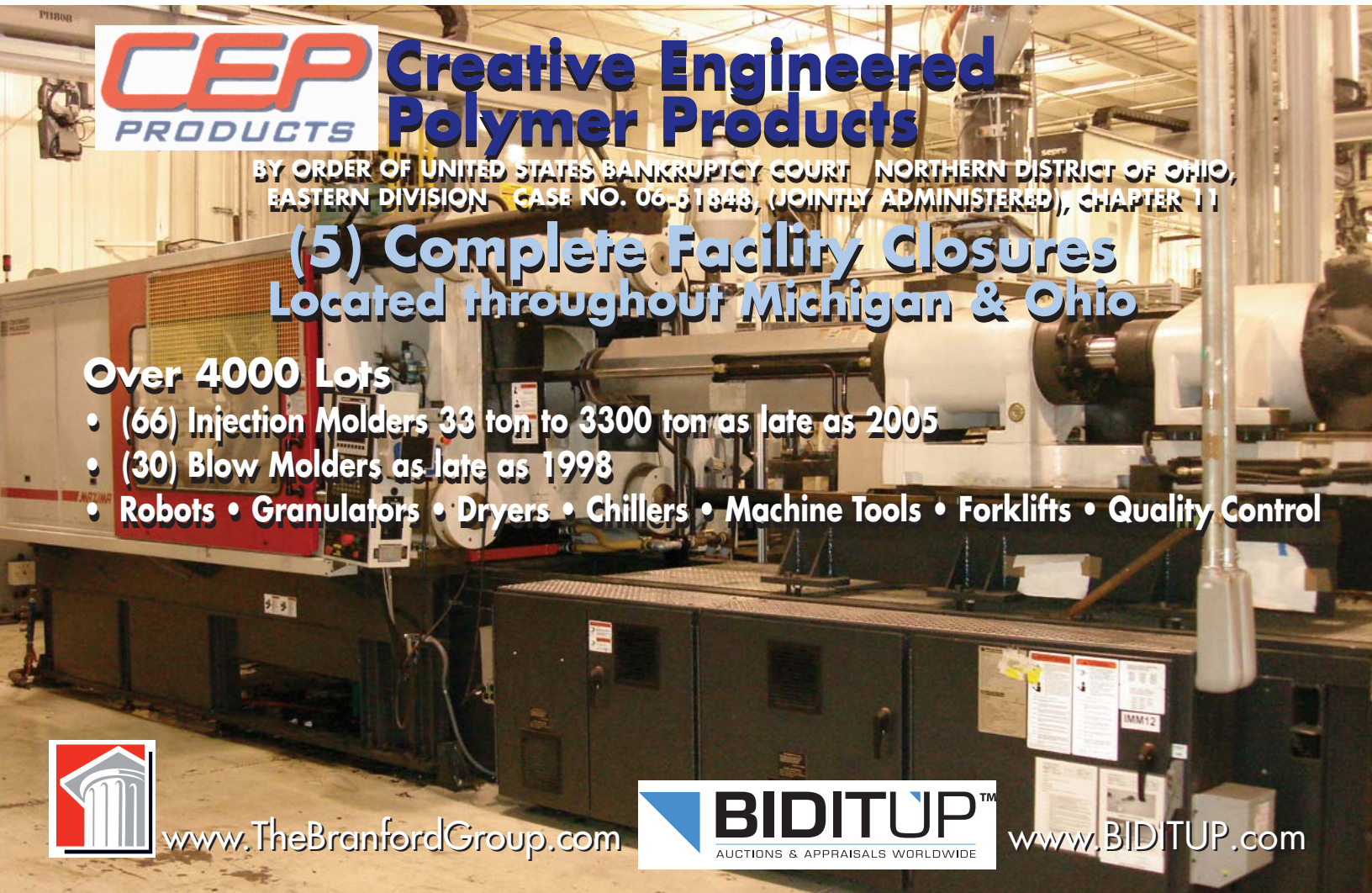
December 12th, 10:00am
Vandalia, Ohio 45377

December 13th, 10:00am
Belleville, Michigan 48111

December 14th, 10:00am
Canton, Ohio 44705

December 19th, 10:00am
Crestline, Ohio 44827

December 20th, 10:00am
Lapeer, Michigan 48446



Creative Engineered Polymer Products

BY ORDER OF UNITED STATES BANKRUPTCY COURT NORTHERN DISTRICT OF OHIO, EASTERN DIVISION CASE NO. 06-51848, (JOINTLY ADMINISTERED), CHAPTER 11

(5) Complete Facility Closures Located throughout Michigan & Ohio

Over 4000 Lots

- (66) Injection Molders 33 ton to 3300 ton as late as 2005
- (30) Blow Molders as late as 1998
- Robots • Granulators • Dryers • Chillers • Machine Tools • Forklifts • Quality Control



www.TheBranfordGroup.com



www.BIDITUP.com