

Biditup! Live On-Site

AUCTION

BARON DRAWN STEEL

Complete Bar & Wire Processing Facility

**Real Estate:
250,000 Square Ft.
Building on 9 Acres!**



**INCREDIBLE
REAL ESTATE
OPPORTUNITY!**

Auction

Thursday, February 12th
Beginning at 10:30am, Eastern

Preview

Wednesday, February 11th
9am to 4pm and morning of sale

Location

1420 Hastings Street
Toledo, Ohio



biditup.com



an industrial assets company

Biditup! Live On-Site

AUCTION

BARON DRAWN STEEL

Auction

Thursday, February 12th
Beginning at 10:30am, Eastern

Preview

Wednesday, February 11th
9am to 4pm & morning of sale

Location

1420 Hastings Street
Toledo, Ohio

Directions

FROM DETROIT METROPOLITAN WAYNE COUNTY AIRPORT (APPROX. 40 MILES FROM SITE)

Turn RIGHT (East) onto William G Rogell Dr. Continue (North) on Merriman Rd. Bear RIGHT (North) onto Ramp. Merge onto I-94 (West). Turn off onto Ramp. Merge onto I-275 (South). At I-275 Exit 1, turn off onto Ramp. Merge onto I-75 [Detroit Toledo Expy] (South). Entering Ohio At I-75 Exit 203B, turn off onto Ramp. Turn RIGHT (South) onto US-24 [N Detroit Ave]. Turn RIGHT (West) onto SR-246 [Dorr St]. Turn RIGHT (North) onto Hastings Ave [Baron Steel Ave]. Watch for Auction Signs

Lodging

RADISSON HOTEL TOLEDO (APPROX. 3 MILES FROM AUCTION)

101 N Summit Street
Toledo, OH 43604
(419) 241-3000

COMFORT INN WESTGATE (APPROX. 3 MILES FROM AUCTION)

3560 Secor Road
Toledo, OH 43606
(419) 531-2666

HILTON (APPROX. 4 MILES FROM AUCTION)

3100 Glendale Avenue
Toledo, OH 43614
(419) 381-6800

HOLIDAY INN (APPROX. 6 MILES FROM AUCTION)

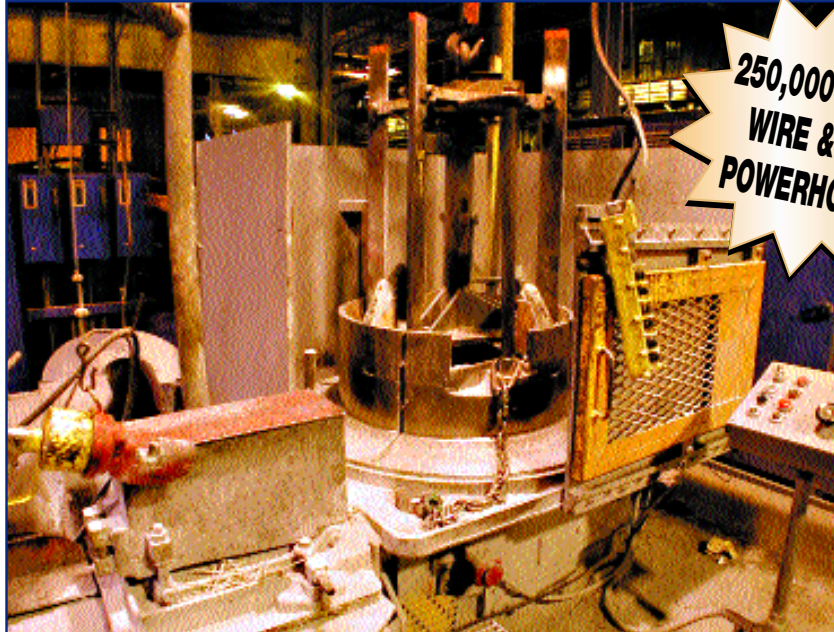
2340 S Reynolds Road
Toledo, OH 43614
(419) 865-1361



WIRE EQUIPMENT

PLEASE NOTE:

All Wire and Bar Lines will be Offered Piecemeal and in Bulk, to be Sold to the Highest Bidder.



250,000 SQ. FT. WIRE & BAR POWERHOUSE!

VIEW OF NO. 2 DRAWING LINE

WIRE EQUIPMENT

NO. 1 DRAWING LINE CONSISTING OF

10,000 Lb. Vertical Pay-Off, 5-Roll RMG Straightener, 3-Roll Wheelabrator Shot Blast, 36" Vaughn Draw Block, Mdl. 22SD, 1/2" to 7/8" Wire Cap., 150 HP DC Drive w/Solid State Scr Controls.

NO. 2 DRAWING LINE CONSISTING OF

6,000 Lb. Pay-Off, 4F FENN Swedger, 36" Vaughn Draw Block, .125 to 3/4" Cap., 300 to 1100 FPM, 100 to 2000 Lb. Tension, 150 HP DC Motor, Banding Scale.

NO. 3 DRAWING LINE, CONSISTING OF

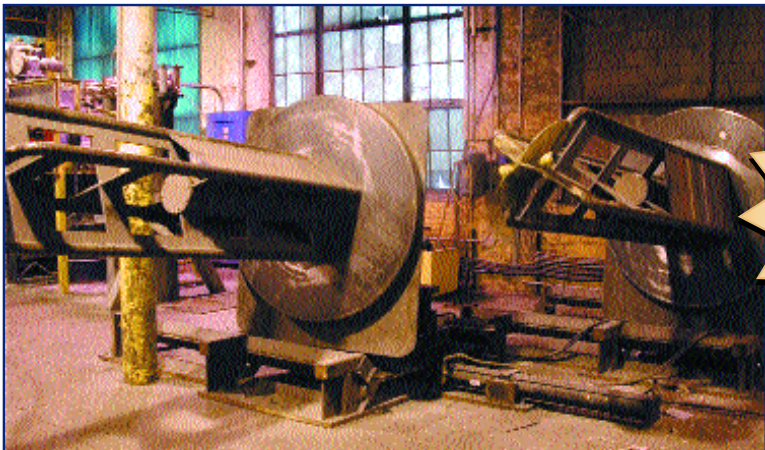
6,000 Lb. Horizontal FASTENER ENG Payoff, 5 Roll FE Straightener, 3-Roll Wheelabrator Shotblast, FENN 6F Swedger, 39" MC BEE Draw Block, Mdl. 48-SDBB-200, 3/4" to 1-7/16" Cap., 31 to 314 FPM, 16,000 Lb. to 30,000 Lb. of Die Pull Force, 280 HP DC Motor, Solid State SCR Controls.



6,000 LB. HORIZONTAL FASTENER ENGINEERING PAYOFF REEL FOR NO. 3 DRAWING LINE

VIEW OF NO. 3 DRAWING LINE

WIRE EQUIPMENT



**WIRE OUTPUT:
3,500 TONS
PER MONTH!**

PAYOFF REELS FOR NO. 4 DRAWING LINE

WIRE EQUIPMENT

NO. 4 DRAWING LINE, CONSISTING OF

(2) MC BEE Combo Horiz/Vertical Payoffs, Micro Shear End Welder, 30" Inverted Block, Mdl. 30-IBB-100, 1,000 To 11,000 Lb. Of Die Pull, .050 To 1/2" Cap., 250 To 750 FPM, 200 HP AC Motor w/Inverter Drive, 2 Exit 48" Turntable Capstans, 2.5 Ton Gantry Over-Head Crane System For Material Handling.

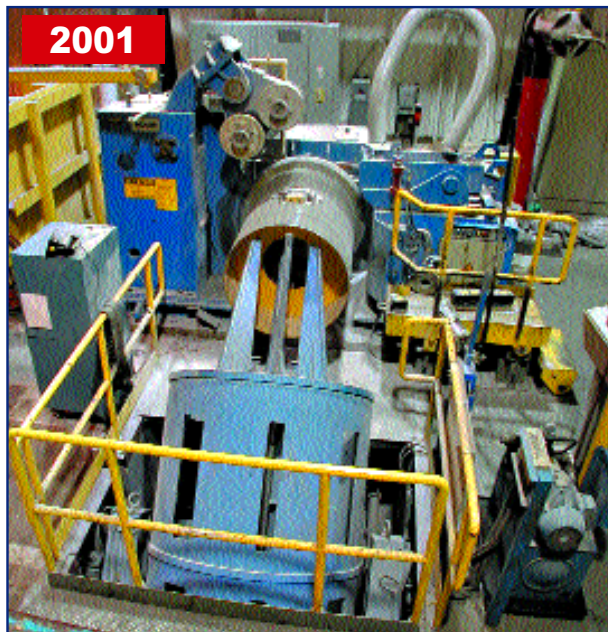
NO. 5 DRAWING LINE, CONSISTING OF

Manufactured By MORGAN KOCH In 2001, Machine Type Khz 50000, Commission No. 15.954, Drawing Range 3/4" To 2" Dia., Max Reduction 36%, 1000mm Dia Block, Cascading Feature, Max Speed 2.3 MPS, 250KW AC Main Motor 1450 To 2900 RPM, AC Vector Drives w/Siemens S7 PLC Controls, Consisting Of: Lathe Type Pointer, MORGAN KOCH Double Capstan Pay-Off & Cascading Block.

1- 8F LEWIS WIRE STRAIGHTENER CUT-OFF, w/2 Vertical Payoffs, Radco Butt Welder, 3 Wheel Wheelabrator Shot Blast Machine, 1/4" To 1/2" Dia Cap., 8' To 20' Lengths.



30" MC BEE INVERTED DRAW BLOCK FOR NO. 4 DRAWING LINE



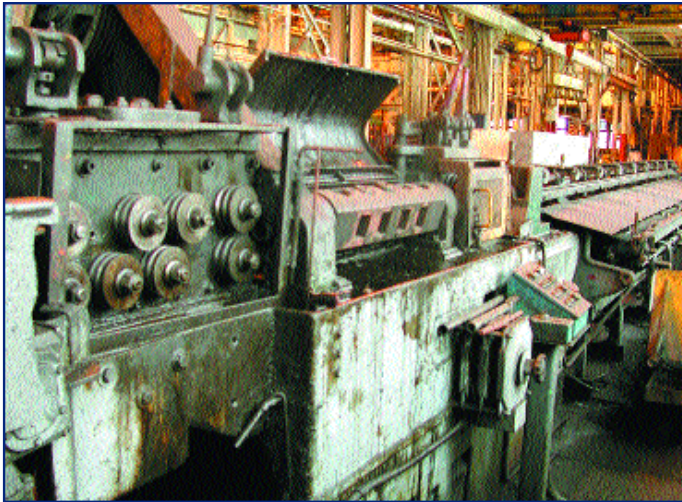
VIEW OF NO. 5 MORGAN KOCH DRAWING LINE COMPONENTS

Terms

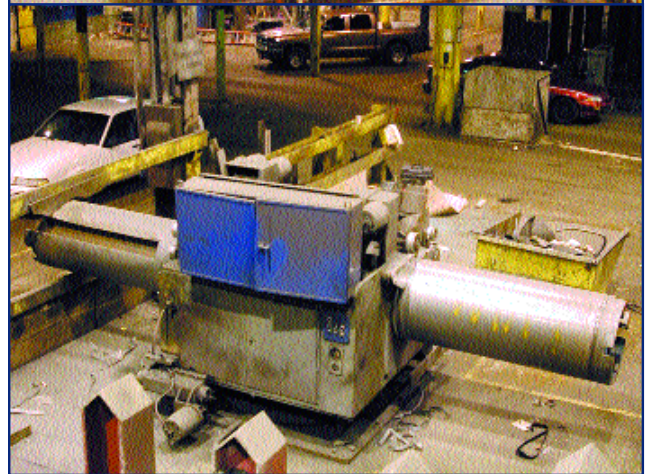
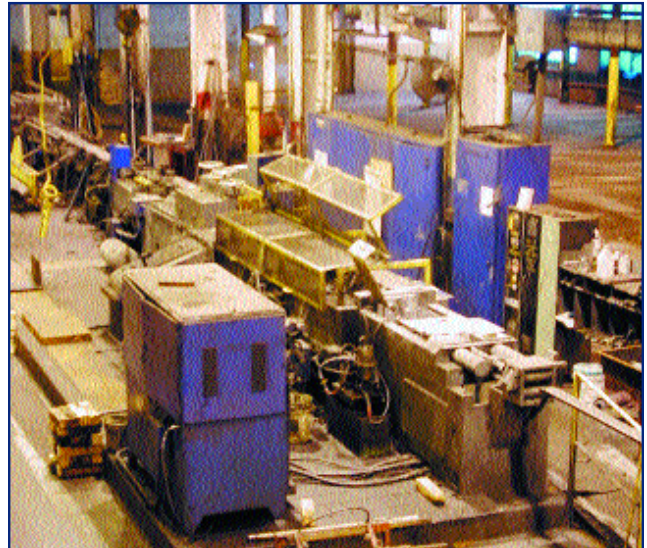
Sale Conducted by: biditup!, Subject to our customary terms of sale, (Available at the auction site on the day of the sale), and any and all amendments and modifications announced by the auctioneer at the time of the auction. The auctioneer and seller make no warranties or guarantees, expressed or implied, as to the defects in or the correctness or accuracy of the descriptions in any advertising of any item(s) being auctioned and will not be responsible for any advertising discrepancies or inaccuracies of any kind. All items sold will be on an "AS IS", "WHERE IS", and "WITH ALL FAULTS", basis "WITHOUT EXCEPTION" and "WITH REMOVAL AT BUYER'S RISK AND EXPENSE". AUCTIONEER AND SELLER MAKE NO WARRANTIES OR GUARANTEES OF ANY KIND, EXPRESSED OR IMPLIED AS TO THE NATURE, QUALITY, VALUE OR CONDITION OF THE ITEM(S) BEING AUCTIONED OR ITS (THEIR) SUITABILITY FOR ANY USE. AUCTIONEER AND SELLER EXPRESSLY AND SPECIFICALLY DISCLAIM WITHOUT LIMITATION ANY WARRANTY OF MERCHANTABILITY OR FITNESS FOR A PARTICULAR PURPOSE. AUCTIONEER SHALL NOT BE LIABLE FOR SPECIAL, CONSEQUENTIAL OR INCIDENTAL DAMAGES. It shall be the buyer's obligation to verify information and descriptions of property prior to sale, biditup!, and its advertising agency assume no liability for errors or omissions in this brochure. The auctioneer does not warrant the age, accuracy, genuineness, authenticity, description, weight, count or measure of any listings specified herein. Although it is not likely, auction sales are subject to cancellation or postponement, and sometimes items are withdrawn from the sale, kindly contact biditup!, prior to travel as there will be no reimbursements. On the day of the sale, all successful bidders must immediately pay the full purchase price in cash, certified funds, cashiers check, wire transfer or company check with a letter from the buyer's bank guaranteeing unqualified payments to biditup! This letter is valid until 30 working days after the auction sale. Company checks without letter from bank guaranteeing unqualified payment will not be accepted. The failure to make payment promptly shall be considered default and each lot or lots so purchased will be placed for resale. The buyer must pay the total invoice price for all the lots purchased before any removal can begin. All buyers must pay applicable sales tax (unless evidence of exemption is provided to auctioneer's satisfaction). Buyers are responsible for the transportation, associated costs and risks involved in the removal of purchased item(s). Certain items may contain residual chemicals and/or hazardous materials. The purchaser(s) hereby indemnify and hold harmless the auctioneer and seller from any and all damages, claims or liability from any injuries to persons or property of any type whatsoever caused during the sale of, during the removal, or during use or operation of the purchased item(s). If you are unable to attend, please contact us regarding placing a proxy bid. PLEASE NOTE: ALL SALES ARE SUBJECT TO A BUYER'S PREMIUM. BUYER'S PREMIUM, 10%.

**Can't Attend
the Sale in
Toledo, OH?**
Call **818.508.7034**
to Place a Proxy Bid
or Let us Bid
via Phone for You!

WIRE & BAR EQUIPMENT



VIEW OF 10F LEWIS WIRE STRAIGHTENER CUT-OFF



VIEW OF SCHUMAG 2B DRAWING LINE COMPONENTS

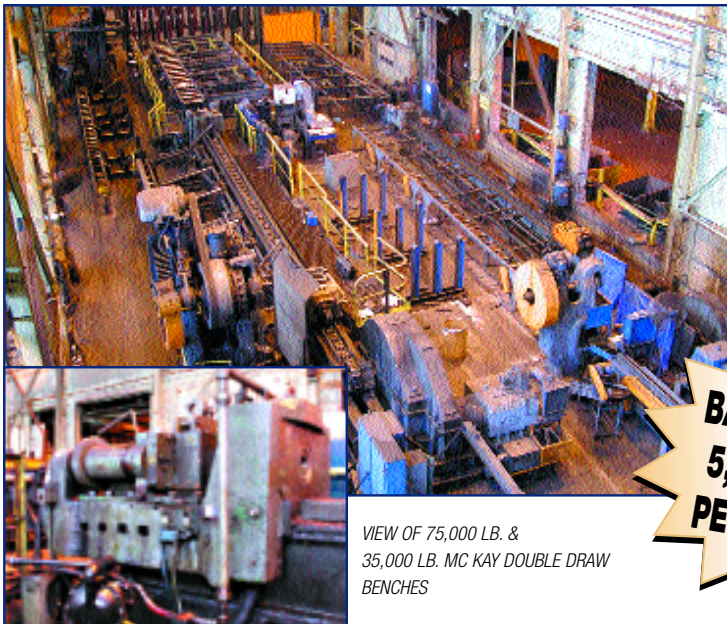
WIRE EQUIPMENT

- 1- 10F LEWIS WIRE STRAIGHTENER CUT-OFF, w/2 Vertical Payoffs, Wheelabrator Shot Blast Radco Butt Welder, Pre-Straightener, Rotary Straightener, 7/16" To 1 1/16" Cap., 8' To 20' Lengths.
 - 1- 1/4" PATTERSON WIRE STRAIGHTENER CUT-OFF, s/n M9071-76, 48" Runout, 50-210 FPM, REEVES Vari-Speed Drive, 5-Die Rotary Arbor, Driven Entry & Exit Pinch Rolls, Stationary Cutoff, (2827F).
 - 1- 1978 33,000 LB. MITCHELL HYDRA PUSH 2-DIE ROD PUSH POINTER.
- SCHUMAG DRAWING LINE, CONSISTING OF:**
 Fastener Eng Double Pay-Off Reel, FE 5 Roll Pre-Straightener, 3 Wheel Wheelabrator Shot Blast, Schumag Mdl. LKZ-IIIB w/Hyd. Push Pointer, 2 Plane Straightener, Flying Shear, Exit Polisher & Tables, 250 HP Main Drive, 9' To 25' Lengths, 1-1/8" Cap Rounds & Shapes.



1978

33,000 LB. MITCHELL HYDRA PUSH 2-DIE ROD PUSH POINTER



VIEW OF 75,000 LB. & 35,000 LB. MC KAY DOUBLE DRAW BENCHES

BAR EQUIPMENT

75,000 LB. MCKAY DOUBLE DRAW BENCH CONSISTING OF:

- (3) 3-Wheel Wheelabrator Shot Blast Machines, Hydraulic Push Pointer, Single Chain Bench, 400 HP DC Traction Motor, 4" Round Capacity X 40' Length Finished. Bliss 300 Ton Shear w/Air Clutch & Brake, w/Exit Table System.

35,000 LB. MCKAY DOUBLE DRAW, DRAW BENCH CONSISTING OF:

- (2) Wheelabrator Shot Blasts in Tandem, Hydraulic Push Pointer, Single Chain Bench, 200 HP DC Motor, 1/4" To 1.5" Capacity, X 40' Finished Length. 200 Ton Mechanical Cut-Off Press. w/Exit Table System.

**BAR OUTPUT:
5,000 TONS
PER MONTH!**

STRAIGHTENERS, MISCELLANEOUS BAR EQUIPMENT, ANNEALING



MEECO NO. 3SS 2 ROLL STRAIGHTENER



MEDART 24 ROLL 2 PLANE STRAIGHTENER, MDL. 3TPOMVC



MEDART 24 ROLL 2 PLANE STRAIGHTENER, MDL. 1TPVC12&12



MOJ ENGINEERING CHAMFER MACHINE



BAR RACKING



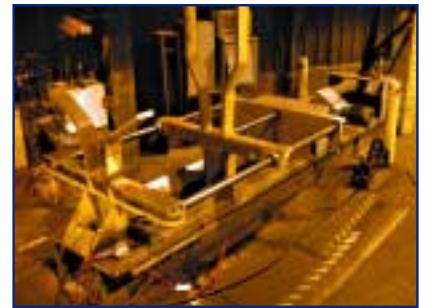
30,000 LB. UPENDER

(6) STRAIGHTENERS

- 1- MEECO NO. 3SS 2 ROLL STRAIGHTENER, s/n L1017, 3/4" To 4 1/2" Round Cap., 2 100 HP DC Motors, 900 To 1800 RPM, w/Entry & Exit Tables.
- 1- MEECO NO. OA 2 ROLL STRAIGHTENER, s/n 1475, 3/4" Capacity.
- 1- MEDART 24 ROLL 2 PLANE STRAIGHTENER, MDL. 3TPOMVC, s/n 1519, 1/2" To 3" Square & Hex Capacity, 87 To 325 FPM, 50 HP DC Motor.
- 1- MEDART 24 ROLL 2 PLANE STRAIGHTENER, MDL. 1TPVC12&12, 1/4" To 1-1/2" Cap., Squares & Hexes, 25 HP DC Motor.
- 1- MOJ ENGINEERING CHAMFER MACHINE, 1/4" To 4" Round Cap., 1/2" To 3" Hex, Up To 24" Long Lengths, w/Entry & Exit Table For Bundling.



VIEW OF WIRE SPINDLES



AUTOMATIC WIRE COIL BANDER

MISCELLANEOUS BAR EQUIPMENT

- 1 30,000 LB. UPENDER.
- 1- AUTOMATIC WIRE COIL BANDER WIRE SPINDLES

OVER 300' OF CUSTOMIZED BAR RACKING, Fabricated Steel Construction.

ANNEALING EQUIPMENT

- 5- RADCON FURNACES, Natural Gas, 6 Bases, 6 Intercovers, 10' Diameter X 10' Height.
- 1- ENDO GAS GENERATOR MDL. RX-2T-BCP, Surface Combustion, Computer Controlled.
- 1- 75' SURFACE COMBUSTION PUSHER FURNACE, Gas Fired 75' Long, 5 Zone, w/Recirculating Conveyor System w/Stainless Steel Trays.



VIEW OF RADCON FURNACES

5 Available



ENDO GAS GENERATOR MDL. RX-2T-BCP



75' SURFACE COMBUSTION PUSHER FURNACE

Need an Appraisal? Call 818.508.7034

CLEAN & COAT SYSTEM, MACHINE SHOP EQUIPMENT

1990



VIEW OF KEREMCHEMIE SULFURIC ACID CLOSED LOOP PICKLING SYSTEM

CLEAN & COAT SYSTEM

- 1- 1990 KEREMCHEMIE SULFURIC ACID CLOSED LOOP PICKLING SYSTEM, (2) Brick Lined Acid Tanks, 9 Various Rinse/Coating Tanks, Acid Regeneration & Waste Water Treatment System, (2) CLEAVER BROOKS Gas Fired Water Tube Boilers, Overhead Crane & Stainless Steel Coil Hook Material Handling System Rebuilt In 1998.

(6) GRINDERS

- 1- 1986 INGERSOLL AUTOMATIC CUTTER GRINDER, MDL. A500, s/n 390079 Stroke 95mm, Cutter Adaption ISO 50, (2756)



1986

INGERSOLL AUTOMATIC CUTTER GRINDER, MDL. A500



8" X 24" GALLMEYER & LIVINGSTON HYDRAULIC SURFACE GRINDER



WARNER & SWASEY TURRET LATHE, MDL. #4

- 1- 8" X 24" GALLMEYER & LIVINGSTON HYDRAULIC SURFACE GRINDER, s/n 35148, Electro-Mag. Chuck, Longitudinal Travel 26", Transverse Travel 9 _", Wheel 10" X 1" X 2", Spindle Speed 2300 RPM, Electro-Magnetic Chuck, Lube System.
- 1- 12" X 36" NORTON #U-4 CYLINDRICAL GRINDER, s/n L-1925, Drop Down I.D. Spindle, 6-Jaw Chuck (3031D), Max Swing 12 15/16", 6-Jaw Chuck On Headstock, Coolant, Tailstock, Drop Down I.D. Spindle, Swivel Head Stock.
- 1- POWERMATIC COMBINATION VERTICAL BELT GRINDER/DISC GRINDER, MDL. 30A, s/n 630A002, 12" Diameter Disc, 6" Wide Belt.
- 1- BALDOR 10" DOUBLE END PEDESTAL GRINDER, s/n G8-102-13, 3/4 HP Main Motor.
- 1- HYDRABRASIVE HYDRAULIC SURFACE GRINDER, MDL. 1218, s/n 1218-153, 12" X 18" Magnetic Chuck, 12" Diameter Wheel, Coolant Pump.

PLASMA CUTTER

- 1- 2000 LINCOLN ELECTRIC PLASMA CUTTING SYSTEM, MDL. PROCUT 55, s/n U10971110546, w/Welding Leads.

WELDING

- 1- GE PORTABLE HEAVY DUTY ELECTRIC WELDER, Straight Or Reverse Polarity.
- 1- LINCOLN ARC WELDER, MDL. DC250MK, s/n A-1086429, Mounted On Wheeled Cart.
- 1- ROCKER ARM SPOT WELDER.

DRILLS

- 1- CLAUSING 1-1/2 HP PEDESTAL TYPE FLOOR DRILL, MDL. 2274, s/n 517112, 10" Throat, 22" X 19 1/2" Table, 24" Vertical Adjustment.
- 1- 96" ICON CNC RAIL DRILL, Drill Head 1/2 HP, (5) Air Vises, 2-Axis Control, Position & Drill.
- 1- 7"X19" CARLTON RADIAL ARM DRILL, 50"x88" Table.

BENDER

- 1- PINES ROTARY HYDRAULIC BAR, TUBE & PIPE BENDER, MDL. 1, s/n 11096-64472 Max. Tube Length Over Mandrel 20', Max. Bending Radius 10", Hydraulic Mandrel Extractor, 10' Bed Extension, One Shot BIJUR Lube, DIAL-A-BEND Control.

TURRET LATHES

- 1- 1970 WARNER & SWASEY MDL. 2A, s/n 2392963, Taper Attachment, Bar Feed.
- 1- 1970 WARNER & SWASEY MDL. #4, s/n 2391091, Taper Attachment, Bar Feed.

LATHES

- 1- SIDNEY MACHINE TOOL CO. GEAR HEAD LATHE, s/n 5942, 17" X 53", Steady Rest, Threading Screw w/Dial, Taper Attachment, Spindle Speed: 14-562 RPM.
- 1- LE BLOND SLIDING BED GAP LATHE, 20 1/2"/46" X 168"/264", Tooled.

MILLING MACHINES

- 1- BRIDGEPORT 1HP VERTICAL MILLING MACHINE, s/n BR75506, 9" X 42" Table, 12" Throat, Power Feed, Spindle Speeds: 80-2720 RPM, Complete w/Shaping Attachment.
- 1- BRIDGEPORT 1 1/2 HP VERTICAL MILLING MACHINE, s/n BR137397, 9" X 42" Table, 12" Throat, Power Feed, Digital Readout, Spindle Speeds: 60-4,200 RPM.

SAWS

- 1- 1992 DOALL 20" VERTICAL METAL CUTTING BAND SAW, MDL. 2013-V, s/n 499-92116, Complete w/Blade Welder & Grinder, 30" X 30" Table.
- 1- DAKE JOHNSON HORIZONTAL METAL CUTTING BAND SAW, MDL. R, s/n 185773, Blade Size: 7'9" X 5/8" X .032", 8" Throat, 9 1/2" Max Width.

CRANES, FORKLIFTS, MISCELLANEOUS & REAL ESTATE



96" ICON CNC RAIL DRILL

ELOX ELECTRON DRILL TAP DISINTEGRATOR, MDL. #M-702-C



(30) CRANES

20 Ton Overhead, DGTR Type • 15/7.5 Ton P & H, DGTR Type • 15 Ton SHAW BOX/ERIE, DGTR Type • 15 Ton P & H, DGTR Type • 10 Ton P & H, DGTR Type • 7.5 Ton Overhead, DGTR Type • 7.5 Ton KONE, DGTR Type • 5 Ton SHAW BOX/CM, SGTR Type • 5 Ton MICHIGAN, DGTR Type • 5 Ton P & H/R & M, DGTR Type • 5 Ton ABELL HOWELL/P & H, SGTR Type • 5 Ton MICHIGAN, DGTR Type • 5 Ton R & M/ERIE, DGTR Type • 5 Ton DEMAG/MT. CLEMENS, DGTR Type • (2) 3 Ton CLEVELAND TRAM - C/M, SGTR Type • 3 Ton (2) DAVIDSON/C/M, SGUH Type • 3 Ton CLEVELAND TRAM - C/M, SGUH Type • 3 Ton C/M, M. Rail Type • 2.5 Ton DEMAG/MT CLEMENS, SGTR Type • 2 Ton C/M Chain Fall, Jib Type • (5) 1 Ton C/M Jib Type • 1 Ton Wall Mounted Jib Crane, w/1-Ton LODE STAR Chain Hoist, HUNER Hung Pendant Control • 1/2 Ton C/M Jib Type.

(9) FORKLIFTS & FLOOR SWEEPER

1- 1992 HYSTER 15,000 LB LPG FORK LIFT TRUCK, MDL. S155XL, s/n B024D2353N, 92" Lift Height, 2-Stage Mast, Complete w/Overhead Guard, Solid Tires.



VIEW OF FORKLIFTS

1- 1992 HYSTER 15,000 LB LPG FORK LIFT TRUCK, MDL. S155XL, s/n B024D037775, 92" Lift Height, 2-Stage Mast, Complete w/Overhead Guard, Solid Tires.

1- 1987 HYSTER 15,000 LB LPG FORK LIFT TRUCK, MDL. S150A, s/n A024D05673H, Complete w/Overhead Guard, Solid Tires.

1- 1988 HYSTER 10,800 LB LPG FORK LIFT TRUCK, MDL. H110XL, s/n F005A05982J, Complete w/Overhead Guard, Enclosed Cab, Solid Tires.

1- 1987 HYSTER 9,000 LB LPG FORK LIFT TRUCK, MDL. H110E, s/n D005D05673H, 110" Lift Height, 2-Stage Mast, Complete w/Overhead Guard, Solid Tires.

1- 1978 HYSTER 8,600 LB LPG FORK LIFT TRUCK, MDL. H80C, s/n C005D181074, 122" Lift Height, 2-Stage Mast, Complete w/Overhead Guard, Solid Tires.

1- 1979 HYSTER 8,000 LB LPG FORK LIFT TRUCK, MDL. H80C, s/n C005D19720Z, Complete w/Overhead Guard, Solid Tires.

1- 1982 HYSTER 8,000 LB LPG FORK LIFT TRUCK, MDL. H80C, s/n C005D186384, Complete w/Overhead Guard, Solid Tires.

1- 1970 HYSTER 4,600 LB LPG FORK LIFT TRUCK, MDL. S50B, s/n C002D09959, 225" Lift Height, 3-Stage Mast, Complete w/Overhead Guard, Solid Tires.

1- TENNANT PROPANE POWERED RIDER TYPE FLOOR CLEANER, MDL. 215, s/n 215-5788.

MISCELLANEOUS PLANT SUPPORT EQUIPMENT

KEEN Welding Rod Oven, Mdl. R1150, s/n 392215, 36" Diameter Opening • MATTHEWS #C-83 Marking Machine • MARKLIFT 1,000 Lb Electric Scissor Lift, Mdl. CH26NP, s/n 24128 • ELOX Electron Drill Tap Disintegrator, Mdl. #M-702-C, s/n 01350 • GARDNER-DENVER 150 Hp Screw Type Air Compressor, Mdl. EBQQOC, s/n 404243, Including Auto Sentry Es Control, 62,586 Hours At Time of Inspection • JOY 100 HP Screw Type Air Compressor, Mdl. Twister III, 150 PSI, 3,574 Hours At Time of Inspection • DIE QUIP Die Grinder, Mdl. D070M, s/n 23570M60 • MANCO CUTTERS,

Various Capacities • Scales, Various Designs w/Digital Indicators & Computer Interface • Gas Torches w/Hoses & Regulators • Steel Torch Carts • Heavy Duty Steel Benches w/Vises • Merrill Bros. 4-Ton Plate Gripper, 12" Double End Pedestal Grinders • Assorted Power/Hand Tools • Adjustable Steel Shelf w/Plastic Bins • Storage Cabinets • 9' Long X 22" Deep X 4' High Cantilever Type Bar Stock Rack, Assorted Electrical Supplies • Nuts • Bolts • 36" X 36" Hoppers w/Cone Shaped Bottoms • Electric Meters • File Cabinets, Etc.

REAL ESTATE TO BE SOLD THURSDAY, FEBRUARY 12 AT 1:00 PM

INCREDIBLE REAL ESTATE OPPORTUNITY!



PRIME INDUSTRIAL REAL ESTATE LOCATED CLOSE TO I-75 IN THE HEART OF TOLEDO!

250,000 Square Foot Industrial Space in Main Building with (3) Out Buildings, Heavy Power, (30) Overhead Cranes 27' Under Hook, (9) Acres Zoned Heavy Industrial.

To View Complete Asset List, Visit our Website: www.biditup.com



an industrial assets company

FIRST CLASS PRE-SORT
MAIL U.S. POSTAGE
PAID
PERMIT NO. 32365
LOS ANGELES, CA

11426 Ventura Blvd.
Second Floor
Studio City, CA 91604

Steven R. Mattes, Auctioneer
OH Lic. #63199464389
Industrial Assets, Inc.
OH Firm Lic. #621994654399

Thinking of having an auction?
Need an appraisal?
Know of a facility closure?
Call: 818.508.7034, Ext. 12
Email: info@biditup.com

Biditup! Live On-Site
AUCTION
bid live in Toledo, Ohio

Thursday, February 12th
Beginning at 10:30am
1420 Hastings St., Toledo, Ohio

BARON DRAWN STEEL
Complete Bar & Wire Processing Facility
Real Estate: 250,000 Square Ft. Building on 9 Acres

Upcoming Auctions

THURSDAY, JANUARY 8

CAE DIVERSIFIED SERVICES, INC.: HVAC Manufacturing Facility - Rolling Stock, Welders, Hand Tools
Live On-Site • Roswell, GA

THURSDAY, JANUARY 8

COMPLETE AUTOMOTIVE MACHINE SHOP: AMC DENMARK Crank Grinder, SUNNEN Precision Honing
Machines, STORM-VULCAN Blockmaster, SUNNEN Grinders, Seat & Guide Machines & Much More!
Live On-Site • Bermuda Dunes (Palm Springs), CA

TUESDAY, FEBRUARY 10

Assets No Longer Required in the Continuing Operations:

A TREMENDOUS MINSTER STAMPING & PLASTIC INJECTION MOLDING FACILITY: Stamping Press &
Plastic Injection Molding Sale of the New Year! Featuring: Late Model Minster High Speed Press Lines & Plastic Injection
Molders, Machine Shop, Rolling Stock, Tool Room & Office Equipment • Live On-Site • Medina, OH

FIRST ANNUAL MULTI-MILLION DOLLAR CONSIGNMENT SALE!

Now Accepting Consignments! Sale Located in Dayton, OH - Late February

Take Advantage of our Extensive National and International Following of
Qualified Buyers with your Consignment of Excess or Unwanted Tools,
Equipment and other Company Assets!

If Equipment is Too Large to Relocate, No Problem!
We Can Arrange Pickup & Delivery to the Sale Site!

DON'T MISS THIS TERRIFIC OPPORTUNITY!
CALL TODAY: 818.508.7034

**ASK US
ABOUT
OUR
BIDCAST
SERVICES**

**Heard of Any
Plant Closures?**
Finder's Fees Paid!

Call 818.508.7034
Ext. 13

information=knowledge=money
biditup.com