

Biditup! Live On-Site

AUCTION

CMF

CUSTOM METAL FABRICATION

**Major CNC Metal Fabricating & Machining Facility,
Intellectual Property & Real Estate
Huge Sale! Thousands of Lots!**

Auction

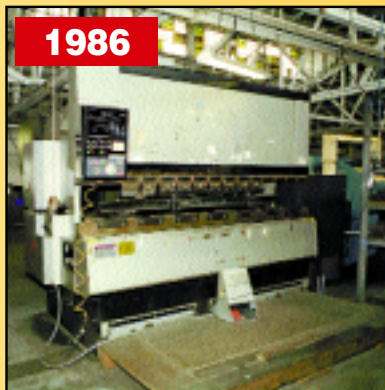
Tuesday, April 27th
Beginning at 10:30am, Pacific

Preview

Monday, April 26th
9am to 4pm and morning of sale

Location

2138 E. 88th Street
Los Angeles, California



biditup.com



an industrial assets company

Biditup! Live On-Site
AUCTION



CUSTOM METAL FABRICATION

Auction

Tuesday, April 27th
 Beginning at 10:30am, Pacific

Preview

Monday, April 26th
 9am to 4pm & morning of sale

Location

2138 E. 88th Street
 Los Angeles, California

Directions

FROM LAX
 (Approx. 12.2 Miles From Auction Site)

From Airport Terminal Start out heading WEST on W IMPERIAL HIGHWAY towards CALIFORNIA STREET. Take I-105 E towards NORWALK. Take exit towards CENTRAL AVE. Turn LEFT onto S CENTRAL AVENUE. Go STRAIGHT on HOOPER AVENUE. Turn RIGHT onto E 92ND STREET. Turn LEFT onto MINER STREET. Turn RIGHT onto E 88TH STREET. Watch for Auction Signs

Lodging

RAMADA INN
 (7 miles from site)
 4300 W. Century Blvd.
 Los Angeles, CA
 310-419-1011

RADISSON
 (8 miles from site)
 6225 W. Century Blvd.
 Los Angeles, CA
 310-620-9000

HOWARD JOHNSON
 (9 miles from site)
 8620 Airport Blvd.
 Los Angeles, CA
 310-645-7700



CNC FABRICATORS, PRESS BRAKES



33-TON STRIPPIT CNC TURRET PUNCH, MDL. FC1000 III



33-TON AMADA CNC TURRET PUNCH, MDL. PEGA 344



100's of Sets of Strippit & Amada Thick & Thin Turret Tooling



150-TON X 10' AMADA HYDRAULIC, MDL. FBD-1503

CNC FABRICATORS

- 1- 1987 33-TON STRIPPIT CNC TURRET PUNCH, MDL. FC1000 III, s/n 9-315052887, FANUC GN6 Control, 40" x 48", Sheet Capacity, 33 Station Thin Turret, Tooling.
- 1- 1982 33-TON STRIPPIT CNC TURRET PUNCH, MDL. FC1000 III, s/n 03651982, HECC-80/3 Control, 40" x 48" Sheet Capacity, 33 Station Thin Turret, Tooling.
- 1- 1982 33-TON AMADA CNC TURRET PUNCH, MDL. PEGA 344, s/n P3440586QL, FANUC 6M Control, 40" x 40" Sheet, Capacity 40 Station Thin Turret, Tooling.
- 2- 1980 33-TON AMADA CNC TURRET PUNCH, MDL. PEGA 344, s/n's P3440336, P344002, FANUC 3000 Control, 40" x 40" Sheet Capacity, 40 Station Thin Turret, Tooling.

CNC PRESS BRAKES

- 1- 1986 150-TON X 10' AMADA HYDRAULIC, MDL. FBD-1503, s/n 1530012, NC9EX Control, 16" Throat, Dual Electric Foot Pedal.
- 1- 1989 110-TON X 8' AMADA HYDRAULIC, MDL. FBD-1025E, s/n 1020151, NC9EXII Control, Dual Electric, Foot Pedal.
- 1- 1984 88-TON X 12' PROMECAM HYDRAULIC, MDL. RG8040, s/n 0210360111, Dynabend, 3 Control, 16" Throat, Foot Pedal.
- 1- 35-TON X 6' WYSONG, MDL. H-3572, s/n HPB13-106, Dynabend Control, Power Ram Adjustment w/Indicator, Dual Palm Control, Electric Foot Pedal, One Shot Lube.

PRESS BRAKES

- 1- 1985 100-TON X 10' ADIRA HYDRAULIC, MDL. QH9030, s/n 1647-3582, Front Operated Manual Back Gauge w/Indicator, Tonnage Control, Front Supports, Foot Pedal.
- 1- 50-TON X 10' CHICAGO MECHANICAL, MDL. 8L10, s/n 7110, Front Operated Manual Back Gauge, Power Ram Adjustment, Air Trip Clutch, Electric Foot Pedal, Dual Palm Control.
- 1- 45-TON X 6' CHICAGO MECHANICAL, MDL. 56A, s/n L-12983, Front Operated Manual Back Gauge, Power Ram Adjustment, One Shot Lube System, Foot Treadle.



110-TON X 8' AMADA HYDRAULIC, MDL. FBD-1025E

SHEARS, STRAIGHT SIDE DOUBLE CRANK PRESS

SHEARS

- 1- CINCINNATI POWER SHEAR, MDL. 1810, s/n 28072, 1/4" x 10', Front Operated Power Back Gauge w/Indicator, 24" Throat, Square Arm, Hydraulic Hold Downs, Counter Balances, Front Supports, One Shot Lube System, Electric Foot Pedal.
- 1- CINCINNATI POWER SHEAR, MDL. 1410, s/n 36526, 3/16" x 10', Front Operated Power Back Gauge w/ Indicator, Square Arm, 18" Throat, Counter Balances, Hydraulic Hold Downs, Front Supports, Foot Treadle.
- 1- METAL MASTER POWER SHEAR, MDL. 416, 16 Ga. x 4', Foot Pedal.

STRAIGHT SIDE DOUBLE CRANK PRESS

The Press Listed Below is Located in Los Angeles and will be Sold via Photo from the Auction Location.
For Additional Information, Please Call 818-508-7034.

- 1- 200-TON BLISS, MDL. SC2-200-96-48, s/n H65263, 8" Stroke, 96" x 48" Bed, 5" Ram Adjustment, 28" Shut Height, 10-70 Variable Strokes per Minute, Palm Control Stand, Machine #3306.



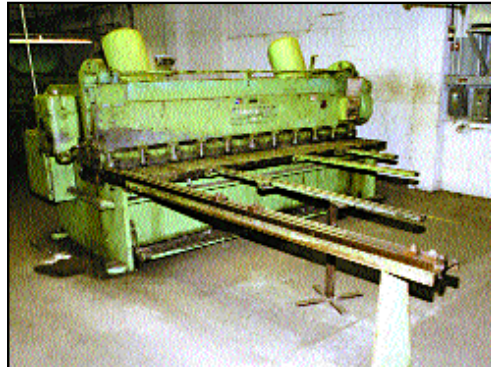
35-TON X 6' WYSONG, MDL. H-3572



50-TON X 10' CHICAGO MECHANICAL, MDL. 8L10



100-TON X 10' ADIRA HYDRAULIC, MDL. QH9030



CINCINNATI POWER SHEAR, MDL. 1410



CINCINNATI POWER SHEAR, MDL. 1810



METAL MASTER POWER SHEAR, MDL. 416



200-TON BLISS, MDL. SC2-200-96-48

Terms

Sale Conducted by: biditup!, Subject to our customary terms of sale, (Available at the auction site on the day of the sale), and any and all amendments and modifications announced by the auctioneer at the time of the auction. The auctioneer and seller make no warranties or guarantees, expressed or implied, as to the defects in or the correctness or accuracy of the descriptions in any advertising of any item(s) being auctioned and will not be responsible for any advertising discrepancies or inaccuracies of any kind. All items sold will be on an "AS IS", "WHERE IS", and "WITH ALL FAULTS", basis "WITHOUT EXCEPTION" and "WITH REMOVAL AT BUYER'S RISK AND EXPENSE". AUCTIONEER AND SELLER MAKE NO WARRANTIES OR GUARANTEES OF ANY KIND, EXPRESSED OR IMPLIED AS TO THE NATURE, QUALITY, VALUE OR CONDITION OF THE ITEM(S) BEING AUCTIONED OR ITS (THEIR) SUITABILITY FOR ANY USE. AUCTIONEER AND SELLER EXPRESSLY AND SPECIFICALLY DISCLAIM WITHOUT LIMITATION ANY WARRANTY OF MERCHANTABILITY OR FITNESS FOR A PARTICULAR PURPOSE. AUCTIONEER SHALL NOT BE LIABLE FOR SPECIAL, CONSEQUENTIAL OR INCIDENTAL DAMAGES. It shall be the buyer's obligation to verify information and descriptions of property prior to sale. biditup!, and its advertising agency assume no liability for errors or omissions in this brochure. The auctioneer does not warrant the age, accuracy, genuineness, authenticity, description, weight, count or measure of any listings specified herein. Although it is not likely, auction sales are subject to cancellation or postponement, and sometimes items are withdrawn from the sale, kindly contact biditup!, prior to travel as there will be no reimbursements. On the day of the sale, all successful bidders must immediately pay the full purchase price in cash, certified funds, cashiers check, wire transfer or company check with a letter from the buyer's bank guaranteeing unqualified payments to biditup! This letter is valid until 30 working days after the auction sale. Company checks without letter from bank guaranteeing unqualified payment will not be accepted. The failure to make payment promptly shall be considered default and each lot or lots so purchased will be placed for resale. The buyer must pay the total invoice price for all the lots purchased before any removal can begin. All buyers must pay applicable sales tax (unless evidence of exemption is provided to auctioneer's satisfaction). Buyers are responsible for the transportation, associated costs and risks involved in the removal of purchased item(s). Certain items may contain residual chemicals and/or hazardous materials. The purchaser(s) hereby indemnify and hold harmless the auctioneer and seller from any and all damages, claims or liability from any injuries to persons or property of any type whatsoever caused during the sale of, during the removal, or during use or operation of the purchased item(s). If you are unable to attend, please contact us regarding placing a proxy bid. PLEASE NOTE: ALL SALES ARE SUBJECT TO A BUYER'S PREMIUM.

Can't Attend
the Sale in
Los Angeles, CA?
Call 818.508.7034
to Place a Proxy Bid
or Let us Bid
via Phone for You!

NOTCHERS, PRESSES

NOTCHERS

- 1- UNINOTECH HYDRAULIC POWER NOTCHER, MDL. N225, 8 1/2" x 8 1/2" x 1/4" Capacity, Work Guides, Electric Pedal, 5 HP.
- 1- DIACRO HAND NOTCHER, MDL. #1, s/n A-5770, 16 Ga. x 6" x 6" Capacity w/Stand.

- 1- KIDDER HAND NOTCHER, MDL. #2, 14Ga. x 5" x 5" Capacity w/Stand.
- 1- DIACRO HAND BENDER, MDL. #1 w/Stand.

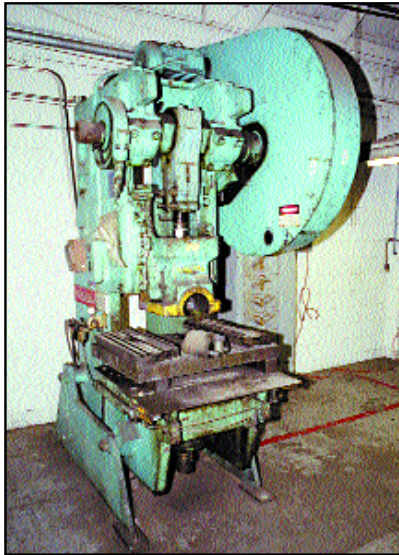
PRESSES

- 1- 90-TON HEIM OBI PUNCH PRESS, MDL. 9A0BIBG, s/n 2271, 6" Stroke, 36" x 24" Bed, Air Trip Clutch & Brake.
- 1- 75-TON NIAGARA OBI PUNCH PRESS, MDL. A-75, s/n 46222, 4" Stroke, 36" x 24" Bed, Air Trip Mechanical Clutch, 80 SPM.
- 1- 50-TON V & O OBI PUNCH PRESS, MDL. 50S, 4" Stroke, 21" x 30" Bed, Auto Lube System, Mechanical Clutch, Foot Pedal.
- 1- 50-TON JOHNSON OBI PUNCH PRESS, MDL. 4 1/2, 4" Stroke, 16" x 27" Bed, System, Mechanical Clutch, Foot Pedal.
- 1- 30-TON JOHNSON OBI PUNCH PRESS, MDL. 3, 3" Stroke, 13" x 21" Bed, Mechanical Clutch, Foot Pedal.

- 1- 30-TON STRIPPIT FABRICATOR, MDL. SUPER 30/30, s/n 22812462, 30" x 42" Sheet Size, Large & Small Tool Holder, Tooling.
- 1- 1996 6-TON HAEGER HARDWARE INSERTION PRESS, MDL. 618, s/n 530, 18" Throat, Bowl, Feeder, Tooling.
- 2- ROTEX HAND TURRET PUNCH PRESS, MDL. 18A, 18 Station, 18" Throat, Punches & Dies, Stand.
- 1- LOWN POWER INITIAL PUNCH ROLL, MDL. B4816, s/n B3044, 16 Ga. x 4', 3" Roll Diameter, Manual Drop End, Electric Foot Pedal, 1 HP.
- 1- KR WILSON H-FRAME HYDRAULIC PRESS, MDL. 37KMO-1, s/n 5261-71, 100 Ton, 16" Stroke, 7 1/2 HP, 220/440 Volts.



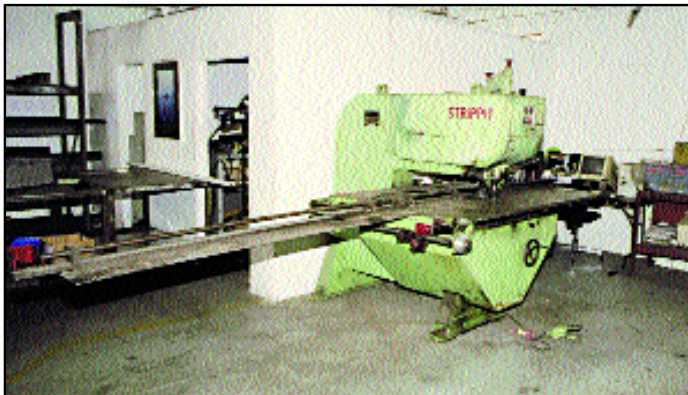
90-TON HEIM OBI PUNCH PRESS, MDL. 9A0BIBG



75-TON NIAGARA OBI PUNCH PRESS, MDL. A-7



UNINOTECH HYDRAULIC POWER NOTCHER, MDL. N225



30-TON STRIPPIT FABRICATOR, MDL. SUPER 30/30



6-TON HAEGER HARDWARE INSERTION PRESS, MDL. 618

INTELLECTUAL PROPERTY FOR SALE

- Trade Name
- Customer List
- Phone Numbers
- Fax Numbers

WELDERS

WELDING

- 2-1995 MILLER HYBRID 6 AXIS WELDING ROBOTS, MDL. MRH-2, s/n's KE624885, KE624886, Fiber Optic Computer Controller, Deltaweld 451 Power Source, (2) 24" x 30" T-Slotted Tables.
- 1-ACME 75 KVA SPOT WELDER, MDL. 3-18-75, s/n 8056, Robotron MA Control, 24" Throat, 7" Gap, Electric Foot Pedal.
- 1-STRYCO 75 KVA SPOT WELDER, MDL. F2475, s/n 4712, 24" Throat, 7" Gap, Electric Foot Pedal.
- 1-ACME50 KVA SPOT WELDER, MDL. 2-24-50, Robotron Control, 24" Throat, 7" Gap, Electric Foot Pedal.
- 1-ACME20 KVA SPOT WELDER, MDL. 1-24-20, s/n 9910, Robotron Control, 24" Throat, 5" Gap, Electric Foot Pedal.
- 2-1998 & 1996 LINCOLN SQUARE WAVE TIG, MDL. 225, s/n's U1960710798, U1960906096, 250 Amp, Lincoln Wire Feeder, Water Cooler.
- 2-2001 & 1997 LINCOLN SQUARE WAVE TIG, MDL. 175 PRO, s/n's U1030300211, U1010325897, 175 AMP, Lincoln Wire Feeder.
- 1-MILLER MIG WELDER, MDL. CP-200, s/n JK571730, 200 AMP, Miller S-52E Wire Feeder.
- 1-AIRCO MIG WELDER, MDL. 2.5 DTR-224B-SM, s/n S409528, 250 AMP, Miller XR Wire Feeder, Cart & Casters.
- 1-LINDE MIG WELDER, MDL. VI-200, s/n B1643635, 200 AMP, Lincoln LN-7 Wire Feeder, Cart & Casters.
- 1-MILLER MIG WELDER, MDL. CP-300TS, s/n 72-652693, 300 AMP, Miller XR Wire Feeder, Cart & Casters.
- 2-AIRCO MIG WELDER, MDL. 1341-0160, s/n's HH026211, HH043828, 250 AMP, Wire Feeders, Cart & Casters.
- 1-LINDE MIG WELDER, MDL. UCC-305, s/n C81B-21815, 300 AMP, Wire Feeder, Cart & Casters.



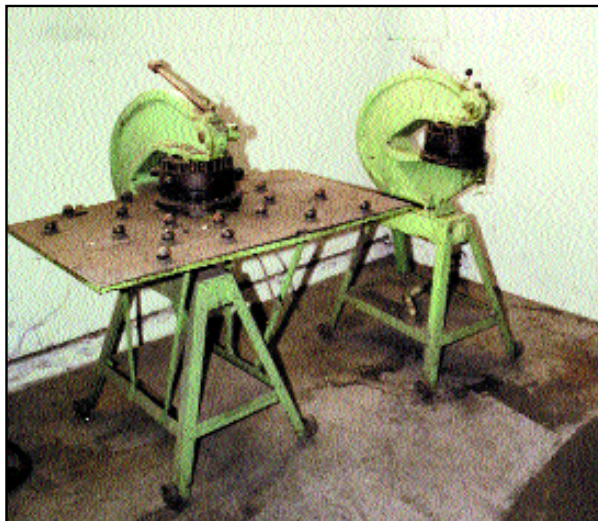
MILLER HYBRID 6 AXIS WELDING ROBOTS, MDL. MRH-2



ACME SPOT WELDER



STRYCO 75 KVA SPOT WELDER, MDL. F2475



ROTEX HAND TURRET PUNCH PRESS, MDL. 18A



LOWIN POWER INITIAL PUNCH ROLL, MDL. B4816



VIEW OF WELDERS

VERTICAL MACHINING CENTERS

VERTICAL MACHINING CENTERS



CNC

MAZAK BRIDGE TYPE CNC MILL, MDL. VQC-20/40B

- 1- **MAZAK BRIDGE TYPE CNC MILL, MDL. VQC-20/40B**, s/n 52745, Mazatrol M-1 Control, 25" x 20" x 18", #40 Taper, 22" x 49" Table, 30 Station Automatic Tool Changer, 5000 RPM, Oil Cooler, Auto Lube System, Coolant, 10 HP.
- 1- **1987 FADAL, MDL. VMC4020**, s/n 8703679, Fadal 88 Control, 40" x 20" x 20", 20 Station Automatic Tool Changer, #40 Taper, Auto Lube System, Coolant, Enclosed.
- 1- **1990 HURCO, MDL. BMC-30**, s/n BK-9006020C, Ultimax Control, 30" x 18" x 24", 24 Station Automatic Tool Changer, #40 Taper, 20" x 40" Table, Heat Exchanger, Auto Lube System, Coolant, 10 HP.
- 1- **1985 MATSUURA TWIN SPINDLE, MDL. MC500V-DC**, s/n 85034629, Yasnac MX2 Control, 20 Station Automatic Tool Changer, 15" x 35" Table, #35 Taper, Oil Cooler, Coolant, Enclosed.
- 1- **LEADWELL, MDL. MCV-760XL**, FANUC 10 Control, 30" x 20" x 20", 20 Station Automatic Tool Changer, 20" x 39" Table, #40 Taper, Auto Lube System, Coolant, Splash Guard.
- 1- **1986 SHARNOA, MDL. SDC-20**, s/n 865297, Tiger 4 Control, 22" x 16" x 20", 33" x 16" Table, 15 Station Automatic Tool Changer, #40 Taper, Auto Lube System, Coolant System.
- 1- **SAJO UNIVERSAL CNC MILL, MDL. DM400**, s/n 82400503, Horizontal/Vertical, HEIDENHAIN TNC 155 Control, 83" x 24" Table, #50 Taper, Auto Lube System, Arbor Supports, Coolant.
- 1- **MONARCH, MDL. VMC75**, s/n 78054, Dynapath 5 Control, 40" x 20" x 20", 20" x 43" Table, #50 Taper, 40 Station Automatic Tool Changer, Coolant.
- 1- **KEARNEY & TRECKER, MDL. VB-4**, s/n 5581088, Gemini Control, 48" x 24" Table, #50 Taper, 20 Station Automatic Tool Changer, Coolant.



CNC

HURCO VERTICAL MACHINING CENTER, MDL. BMC-3



CNC

FADAL VERTICAL MACHINING CENTER, MDL. VMC4020

**TONS OF
USABLE
ALUMINUM,
STAINLESS,
COLD ROLL
SHEET, BARS
& SCRAP
AVAILABLE!**



CNC

MATSUURA TWIN SPINDLE, MDL. MC500V-DC



CNC

LEADWELL, MDL. MCV-760XL



CNC

SHARNOA, MDL. SDC-20

CNC TURNING CENTERS, MILLING MACHINES, ENGINE LATHES, CHUCKERS

CNC TURNING CENTERS

- 2- **HES, MDL. 500**, s/n's 50040, 50026, FANUC GN6 Control, 20" x 66", 15" Power 3-Jaw Chuck, 4 1/4" Spindle Bore, 12 Station Turret, Tailstock, Chip Conveyor, Steady Rest, Coolant System.
- 1- **TAKISAWA, MDL. TC-2 MII**, s/n TKFX11160, FANUC 10T Control, 11" x 12", 8 Station Turret, Tailstock, Power 3-Jaw Chuck, Auto Lube System, Coolant System.
- 1- **HITACHI SEIKI, MDL. HT-20**, s/n 22500, YASNAC Control, 8" x 15", 10 Station Turret, 5C Collet Closer, Tailstock, Auto Lube System, Coolant System.
- 1- **TREE, MDL. TC-200**, s/n T2-106, FANUC 10T Control, 12 Station Turret, Tailstock, 5C Collet Closer, Chip Conveyor, Auto Lube System, Coolant System.
- 1- **PRATT & WHITNEY TURNMATE**, s/n T-820105, FANUC 5T Control, 4 Station Turret, Power 3-Jaw Chuck.
- 1- **PRATT & WHITNEY 8-15 STARTURN**, s/n 5084-0264, FANUC 5T Control, 4 Station Turret, Power 4-Jaw Chuck, Coolant.



HES CNC TURNING CENTER, MDL. 500

MILLING MACHINES

- 1- **BRIDGEPORT SERIES 1 VERTICAL MILL**, s/n 121231, 9" x 42" Table, Vari-Speed, Table Powerfeed, Trav-A-Dials, Shaper Head, 1 1/2 HP
- 1- **BRIDGEPORT VERTICAL MILL, MDL. BRJ-42**, s/n 99579, 9" x 42" Table, 8 Speed, 1 HP
- 1- **FIRST VERTICAL MILL, MDL. VA-1 1/2**, 9" x 42" Table, 8 Speed, One Shot Lube System.
- 2- **BRIDGEPORT T-RAM VERTICAL TRACER MILLS**, True Trace 360/3D Tracer Value, 9" x 60" Table, (4) J Heads, 8 Speed, One Shot Lube System, 1 HP
- 1- **BRIDGEPORT, T-RAM VERTICAL TRACER MILL**, True Trace 360/3D Tracer Value, 9" x 60" Table, (2) Heads, One Shot Lube System.
- 1- **NICHOLS HORIZONTAL HAND MILLER, MDL. #8 S/N 8-U-5971**, 7" x 22" Table, #40 Taper, 8-Speed.



TAKISAWA CNC TURNING CENTER, MDL. TC-2 MII



HITACHI SEIKI, MDL. HT-20

ENGINE LATHES

- 1- **15" X 40" MACHINIST, MDL. 380**, 3 & 4-Jaw Chuck, KDK Tool Post, Gap Bed, Foot Brake, 5 HP
- 1- **15" X 50" TURNMASTER**, 3-Jaw Chuck, Collet Closer, Tool Post, Steady Rest, 5 HP
- 1- **12" X 36" CRAFTSMAN**, 3-Jaw Chuck, Tool Post, Drill Chuck.

EDM MACHINE

The EDM Machine Listed Below is Located in Los Angeles, CA and will be Sold via Photo from the Auction Location. For Additional Information, Please Call 818-508-7034.

- 1- **1990 SODICK CNC WIRE-CUT EDM, MDL. A280L**, s/n 1700, 4 Axis, Machine #3385.



TREE, MDL. TC-200



SODICK CNC WIRE-CUT EDM, MDL. A280L



VIEW OF BRIDGEPORT MILLING MACHINES



15" X 40" MACHINIST, MDL. 380



FIRST VERTICAL MILL, MDL. VA-1 1/2

SAWS, EDM, VERTICAL BROACHING MACHINE, GRINDERS

SAWS

- 1- **DOALL HIGH SPEED VERTICAL BANDSAW, MDL. 36-R**, s/n 31-52823, 36" Throat, 36" x 31" Table, 19" x 19" Sub Table, 16" Work Height, 15000 FPM, Vari-Speed, Roller Guides, 10 HP.
- 1- **DOALL VERTICAL BANDSAW, MDL. 16-SFP**, s/n 79-55608, 24" x 24" Table, Blade Welder, Blade Grinder, Vari-Speed.
- 1- **MIGHTY AUTOMATIC HORIZONTAL BANDSAW, MDL. 1218**, 12" x 18", Bar Feeder, Length Stop, Roller Table, 6 Speed, 2 HP.
- 1- **14" HABERLE SEMI-AUTOMATIC COLD SAW, MDL. H350**, s/n 120560486, Head Air Feed, Dual Air Vises, Coolant System, 3 HP
- 1- **12" HABERLE COLD SAW, MDL. HL-4**, s/n 86181082, Dual Manual Vises, Stock Stand, Coolant System, Stand, 2 HP

VERTICAL BROACHING MACHINES

- 1- **CINCINNATI, MDL. 10-54**, s/n 3E3VIR-7, 54" Stroke, 10" Diameter, Coolant, 15 HP.
- 1- **CINCINNATI, MDL. 5-54**, s/n 4E2VIY-15, 54" Stroke, 5" Diameter, Coolant, 15 HP.

CHUCKERS

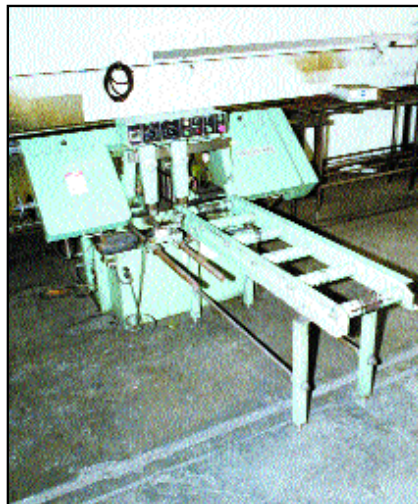
- 1- **HARDINGE AUTOMATIC CHUCKING MACHINE, MDL. AHC**, Vertical Cut-Off Attachment, Coolant System.
- 1- **HARDINGE SUPER PRECISION CHUCKER, MDL. #HC**, Spindle Speeds 125 - 3,000 RPM, 8 Station Turret.

GRINDERS

- 1- **BOYAR-SCHULTZ, MDL. 618H**, s/n HY536, 2 Axis Power Feed, 6" x 18" Electro Magnetic Chuck & Control, 1/2 HP
- 1- **K.O. LEE TOOL & CUTTER GRINDER, MDL. B2060**, s/n 13524BD, Universal Head.
- 1- **AMADA TOOL GRINDER**, 3-Jaw Chuck, Coolant System.
- 1- **BALDOR CARBIDE TOOL GRINDER, MDL. 510**, s/n F1187, Diamond Wheel, Stand, 1/2 HP



DOALL HIGH SPEED VERTICAL BANDSAW, MDL. 36-R,



MIGHTY AUTOMATIC HORIZONTAL BANDSAW, MDL. 1218



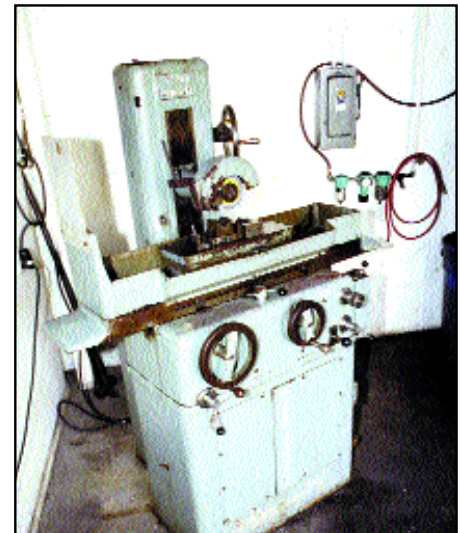
HARDINGE AUTOMATIC CHUCKING MACHINE, MDL. AHC



14" HABERLE SEMI-AUTOMATIC COLD SAW, MDL. H350



12" HABERLE COLD SAW, MDL. HL-4



BOYAR-SCHULTZ GRINDER, MDL. 618H

DRILLS, SANDERS & BUFFERS

DRILLS

- 1- 20" WALKER TURNER 2 SPINDLE DRILL PRESS, s/n 148, 24" x 36" Table, Telco 4 Spindle Drill Attachment, 5 Speed, #3MT Spindle, 1 HP.
- 1- 20" REXON FLOOR DRILL, MDL. RDM-270, s/n 72724, 16" x 16" Table, 9 Speed, 3 MT Spindle, Elevating Mechanism, 1 HP.
- 1- 17" DELTA FLOOR DRILL, S/N 1518, 20" x 16" Table, 4 Speed, #2 MT Spindle, Elevating Mechanism, 3/4 HP.
- 1- 15" CRAFTSMAN FLOOR DRILL, 10" x 10" Table, 4 Speed, 2 MT Spindle Drill Chuck, 1/2 HP.
- 1- 15" CLAUSING 4 SPINDLE DRILL PRESS, s/n 530107, 20" x 60" Table, Vari-Speed, #2 MT Spindle, Elevating Mechanism, 3/4 HP.
- 1- 15" AVEY FLOOR DRILL, 1- TELCO MULTI SPINDLE DRILL PRESS, MDL. 9558, s/n 526, 14 Spindle Drivers, 12" x 10" Table.
- 1- 12" DUMORE FLOOR DRILL, 10 Speed, 1/2 HP.
- 1- 5/8" BURGMASER TURRET DRILL, MDL. 2A, s/n 2691, 21" x 36" Adjustable Table, 6 Station Turret, 1 HP.
- 1- 1/4" BURGMASER TURRET DRILL, MDL. OB, 8" x 12" Table, 6 Station Turret, Drill Chucks, Coolant System, Stand.
- 1- DUMORE 2-HEAD DRILL PRESS, Air Head Feed, #2 MT Spindle, Push Button Controls, Drill Chucks.

SANDERS & BUFFERS

- 1- TIMESAVER BELT SANDER, MDL. 125-2HDCM, s/n 21648, 25" Belt, 25" Brush, Vari-Speed Conveyor, Motorized Height Adjustment, Auto Lubrication, Dust Collector.
- 1- 20" APEX DISC SANDER, 14" x 28" Table, 1 1/2 HP.
- 2- 8" MATTISON HORIZONTAL BELT SANDERS, 3 HP.
- 3- 2" BURR KING BELT SANDERS, MDL. 760, Stand, 3/4 HP.
- 1- 2" BURR KING BELT SANDER, MDL. 760, Stand, 2 HP.
- 1- 1" BALDOR BELT SANDER.
- 1- HAMMOND POLISHING LATHE, MDL. 10ROH, (2) Back Stands, 10 HP.
- 1- HAMMOND POLISHING LATHE, MDL. 5ROH, 5 HP.
- 1- BALDOR BUFFER, MDL. 332B, s/n P3-95, Stand, 3/4 HP.
- 1- BALDOR BUFFER, 1 1/2 HP, Stand.



TIMESAVER BELT SANDER, MDL. 125-2HDCM,



20" WALKER TURNER 2 SPINDLE DRILL PRESS



15" CLAUSING 4 SPINDLE DRILL PRESS



5/8" BURGMASER TURRET DRILL, MDL. 2A



8" MATTISON HORIZONTAL BELT SANDERS



VIEW OF BELT SANDERS

INSPECTION EQUIPMENT, OVEN, FINISHING MACHINES

INSPECTION EQUIPMENT

- 1- BROWN & SHARPE VALIDATOR CMM, s/n 581-200-104, 6' x 4' x 36", Probe, Computer, Printer.
 - 1- 14" MICRO-VU OPTICAL COMPARATOR, MDL. 1214, s/n 615, 5" x 18" Stage, MD-1 Computer & DRO, Surface Illumination, V-Blocks, 20x Lens.
 - 1- GRAPHTEC PEN PLOTTER, MDL. GP1002.
 - 1- 36" X 24" X 3" MOJAVE GRANITE SURFACE PLATE, O Ledge, Grade B, Stand.
 - 1- 10' X 4' X 12" STANDRIGE GRANITE SURFACE PLATE, 2 Ledge, Grade A, Stand.
 - 1- 12' X 3' X 12" MOJAVE GRANITE SURFACE PLATE, O Ledge, Grade A, Stand.
 - 1- 6' X 4' X 10" MOJAVE GRANITE SURFACE PLATE, 2 Ledge, Grade A, Stand.
 - 1- WILSON ROCKWELL HARDNESS TESTER, MDL. 4TTRB, s/n 2354, w/Weights.
 - 1- GOKO SEIKI HARDNESS TESTER, MDL. 3R, s/n 1507, w/Weights, Stand.
- Height Gauges, Venier Calibers, Gauge Blocks, Angle Plates, Gauge Pins, Bench Centers, I.D & O.D Micrometers, Thread Gauges.

OVEN

- 1- GRIEVE, MDL. AG-650, s/n 42148, 4' x 4' x 3' Capacity, 650°F, Blower.

FINISHING MACHINES

- 1- TIMESAVER VIBRATORY DEBURRING MACHINE, MDL. V-44, s/n 20976G, 12'x 24" x 20" Tank Size, 44 Cubic Feet, Vari-Speed, Slurry System, 20 HP Motor.
- 2- 3 CUBIC FEET MR. DEBURR VIBRATORY DEBURRING MACHINE, MDL. 300D, 1 1/2 HP Motor.
- 1- GAUER EDGE DEBURRING MACHINE, MDL. 4H10, s/n A167167, 5/8"-10" Wide, 24 Ga.-11 Ga. Capacity, 1 HP.



BROWN & SHARPE VALIDATOR CMM



14" MICRO-VU OPTICAL COMPARATOR, MDL. 1214



**TONS OF USABLE
ALUMINUM,
STAINLESS,
COLD ROLL SHEET,
BARS & SCRAP
AVAILABLE!**



TIMESAVER VIBRATORY DEBURRING MACHINE, MDL. V-44



3 CUBIC FEET MR. DEBURR VIBRATORY DEBURRING MACHINE, MDL. 300D



VIEW OF INSPECTION EQUIPMENT



GRIEVE OVEN,
MDL. AG-650

AIR SANDERS



**INTELLECTUAL
PROPERTY
FOR SALE**

- Trade Name
- Customer List
- Phone Numbers
- Fax Numbers

AIR COMPRESSORS, ROLLING STOCK, MISCELLANEOUS & REAL ESTATE

1992



20' GMC TOPKICK LOPRO STAKE BED TRUCK

AIR COMPRESSORS

- 1- **INGERSOLL RAND ROTARY SCREW TYPE, MDL. SSREP100, 100 HP.**
- 1- **COMPAIR KELLOGG HYDRO VANE 118, s/n HV497506-1, 20 HP Motor, 200 Gallon Tank.**
- 1- **INGERSOLL RAND, MDL. T-30, 5 HP Vertical, 80 Gallon Tank.**
- 1- **WILKERSON REFRIGERATED AIR DRYER, MDL. H12-HH-P00.**

MISCELLANEOUS

UNI-TENSION Shrink Wrap Machine, Mdl. 88, 5' x 5' Table, 5' Vertical Travel, 32" Wrapper
 • Banding Carts, Floor Fans, Pallet Jacks, Tape Machines, Wire Baskets, Pallet Racking, Work Carts w/Casters, Welding Tables, Welding Curtains, Ladders, Bench Vises, Mill Vises, Tool Holders, Power Hand Tools, Air Sanders, Hand Sanders, Nuts,Bolts, Belts, Office Furniture, Computers, Printers, Fax Machines, Copy Machines, Refrigerators, Microwaves, Lunch Tables, Time Clocks, Water Dispensers, Press Brake Dies, Punch Press Dies, Parts Carousels, File Cabinets, Material Racks, Miscellaneous Tooling & More!

1995



20' GMC TOPKICK LOPRO STAKE BED TRUCK

ROLLING STOCK

- 1- **1992 20' GMC TOPKICK LOPRO STAKE BED TRUCK, Automatic Transmission, Power Steering, Air Conditioning, Radio.**
- 1- **1995 FORD RANGER XLT PICK-UP TRUCK, 4 Speed Transmission, Air Conditioning, Radio.**
- 1- **5000 LB. CLARK FORK LIFT, MDL. C500-45, s/n 355-804636, Propane, Side Shift, Hard Tires.**
- 1- **5000 LB. TOYOTA FORK LIFT, MDL. FG-25, s/n 3368, Propane, Hard Tires.**
- 1- **COLEMAN POP-UP CAMPING TRAILER.**
- 5- **5000 LB. BIG JOE PALLET JACK & HAND DOLLIES.**
- 1- **1000 LB. ECONOMY DIE CART.**



VIEW OF MISCELLANEOUS TOOLING



5000 LB. CLARK FORK LIFT, MDL. C500-45



INGERSOLL RAND ROTARY SCREW TYPE AIR COMPRESSOR, MDL. SSREP100



MISCELLANEOUS TOOLING



VIEW OF MISCELLANEOUS OFFICE FURNITURE



VIEW OF OFFICE EQUIPMENT



VIEW OF MISCELLANEOUS OFFICE FURNITURE

INDUSTRIAL REAL ESTATE FOR SALE

Good Alameda Corridor Facility For Sale - Readily Divisible For User/Investor - Well Distributed Power & Airlines Throughout Two Secure Yard Areas - Good Street Parking - Located Just 1 Block West of Alameda St. in Emerging Area

Lease Rental \$ NFL • Sale Price \$1,520,000 • Price/SF \$47.09 • Tax \$11,350.00 • Yr. 2003-2004 • **Terms:** Cash or Terms Acceptable to Seller, Possession COE • Avail SF 32,280 • DIM IRRxIRR • Power A 600,400 • V 480-480, 480-480 • ø 3,3 • W 3,3 • Min SF 32,280 • DIM IRRxIRR • Lighting FLUOR • Heat NONE • Cooling NONE • PWR Notes Must Verify • Land SF 51, 078 DIM 219x233 • Trk Hi Pos 0 • EQ Zone N • Const BRK,MTL • Roof • WDB,STT • Grd Lev Drs15 • DIM (6) 10x10; (2)18x12; 14x11 • Dock N • Well N • Foil N • Sklts Y • Rail None • Storage Mezz SF 854 • Incl in Avail SF N • Rest Rms M 2 W 2 • Sprkd N • Min Clr 12 Office Data Ofc Sf 4,500 # 11 Rest Rms M 2 W 2 • Pkg 34 • Fenced Y • Yr Blt 1949 • A/C Y • Heat Y • Finished Office Mezz SF 640, Incl. In Avail SF Y • Sp. Feat. CRNS • Notes: 100 AMP, 240 V,1 PH SVC Also, Proportions of Prop. 14 & 11 CLR Portion A/C, Large Vault in Office, Outside Shed & Burnt Bldg not Incl. In S/F.



**For Additional Information Call:
818-508-7034 ext. 12**

To View Complete Asset List, Visit our Website: www.biditup.com



an industrial assets company

FIRST CLASS PRE-SORT
MAIL U.S. POSTAGE
PAID
PERMIT NO. 32365
LOS ANGELES, CA

11426 Ventura Blvd.
Second Floor
Studio City, CA 91604

Steven Mattes, Auctioneer
CA Bond #CSC3062775

**Thinking of having an auction?
Need an appraisal?
Know of a facility closure?
Call: 818.508.7034, Ext. 12
Email: info@biditup.com**

Biditup! Live On-Site
AUCTION
bid live in Los Angeles, CA

Tuesday, April 27th
Beginning at 10:30am
2138 E. 88th St., Los Angeles, CA



CUSTOM METAL FABRICATION
Major CNC Metal Fabricating & Machining Facility, Intellectual Property & Real Estate. Huge Sale! Thousands of Lots!

Upcoming Auctions

TUESDAY, APRIL 20

Assets No Longer Required in the Continuing Operations: LIFE FITNESS

Late Model CNC Machining, Fabrication & Powder Coating Facility Featuring: Complete Weight Plate Fabrication Line including Drilling and Boring Machines, Deburring Machines, Sand Blast Machine, Powder Coat and 10 Station Conveyorized Oven; 1999 Bridgeport Vertical Machining Center, 2000 MMT Cutoff Machine, Large Capacity Marvel and Hydmech Vertical Band Saws, 2001 Clausung Colchester Engine Lathe, CNC Vertical Mills, Doring and Haberle Cold Saws, Panel Presses, Welding Equipment including Miller and Powcon Welders with Wire Feeds, Powder Coating Booths, Curing Ovens, Dust Collectors, Air Compressors, Bridge Cranes, Rolling Stock, Plant Support Equipment, Office Equipment, Complete Workout Facility and Much More! • Live On-Site • Paso Robles, CA

WEDNESDAY, APRIL 21

IRON CLYDE MANUFACTURING, LLC

CNC Machine Shop Featuring: Lucas CNC Boring Mill, Toshiba Vertical Machining Center, Boring Mills, CNC Lathes, Gear Machinery, Flame Cutters, Machine Shop Equipment, Inspection Equipment and Much More!
Live On-Site • Duluth, MN

THURSDAY, APRIL 29

HALE PRODUCTS

Late Model Fabricating Equipment including: CNC Lathes, Vertical & Horizontal Machining Centers, CNC Creep Feed Grinders, 108" & 42" Capacity Rotary Surface Grinder, Press Brakes, Shear, Ironworker, Tool Room Equipment, CNC Plasma Cutter, Coordinate Measuring Machine, Horizontal & Vertical Band Saws, Complete Paint Room and 9' x 14' Oven, Keyseater, Cylinder Grinders, T&C Grinder, Surface Grinders, Jib Cranes, Fork Lifts, Office Furniture & More!
Live On-Site • St. Joseph, TN

THURSDAY, MAY 6

TECHNO COM INDUSTRIES, INC.

Major Plastic Injection Molding, CNC Machining, Fabricating and Stamping Facility Featuring: Van Dorn Plastic Injection Molders; 150-T to 25-T Bliss, Minster, Komatsu, Havir & L&J Presses; Straighteners, Threaders & Formers; EDM Machines; Lathes; Surface Grinders; Vertical Mills; Saws; Drills; Air Compressors; Inspection Equipment; Material Handling & Much More! • Bidcast & Live On-Site • Toa Alto, Puerto Rico

**Heard of Any
Plant Closures?
Finder's Fees Paid!**

Call 818.508.7034
Ext. 13



information=knowledge=money
biditup.com