

Biditup! Live On-Site

AUCTION

Assets No Longer Required in the Continuing Operations:

THERMADOR

A DIVISION OF BSH HOME APPLIANCES CORPORATION

WORLD FAMOUS MANUFACTURER OF HOME KITCHEN APPLIANCES

CNC Fabricating, Stamping & Machine Tools

Auction

Thursday, May 27th

Beginning at 10:30am, Pacific

Preview

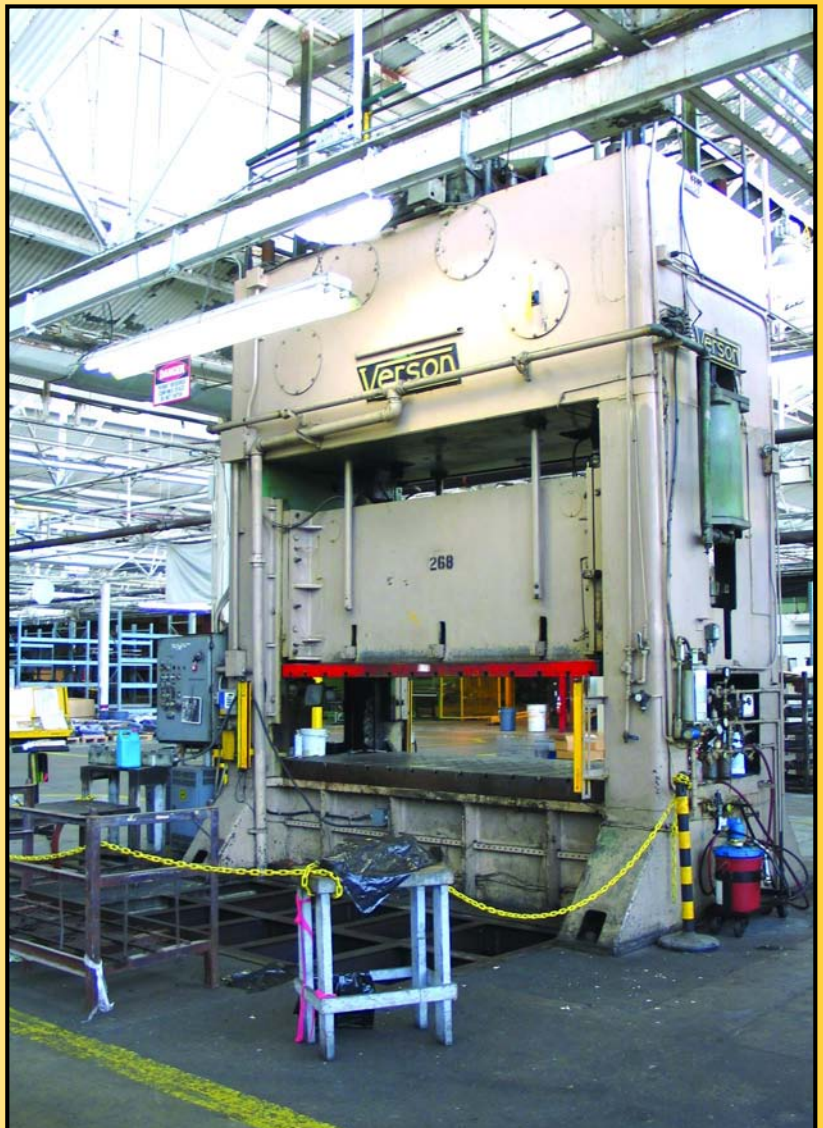
Wednesday, May 26th

9am to 4pm and morning of sale

Location

5119 District Boulevard

Vernon, California



biditup.com



an industrial assets company

Biditup! Live On-Site AUCTION

Assets No Longer Required in the
Continuing Operations:

THERMADOR

A DIVISION OF BSH HOME
APPLIANCES CORPORATION

WORLD FAMOUS MANUFACTURER
OF HOME KITCHEN APPLIANCES

Auction

Thursday, May 27th
Beginning at 10:30am, Pacific

Preview

Wednesday, May 26th
9am to 4pm & morning of sale

Location

5119 District Boulevard
Vernon, California

Directions

FROM LAX

(Approx. 21.15 Miles From Auction Site)
Take the I-105 E/IMPERIAL HWY. W Ramp
Toward IMPERIAL TERMINAL. Merge onto
I-105 E Toward NORWALK. Take I-710 N
Toward PASADENA. Take the BANDINI
BL-WEST Exit Toward ATLANTIC BLVD.
SOUTH. Take the Ramp Toward MAYWOOD.
Merge onto S ATLANTIC BLVD. Turn RIGHT
onto DISTRICT BLVD. Watch for Auction Signs.

Lodging

SHERATON FOUR POINTS

(19 miles from site)
9750 Airport Blvd.
Los Angeles, CA 90045
310-645-4600

HOLIDAY INN

(20 miles from site)
9901 La Cienega Blvd.
Los Angeles, CA 90045
310-649-5151

WESTIN LOS ANGELES AIRPORT

(20 miles from site)
5400 W. Century Blvd.
Los Angeles, CA 90045
310-216-5858



CNC TURRET PUNCH

1- 1998 22-TON MURATA WEIDEMANN, MDL. CENTRUM C-2000, s/n 2619, 40" x 50" Sheet, 96" w/Repositioning, FANUC OP CNC Control, 22 Station Thin Turret, 2 Auto Indexing, Wet Clutch, Oil Cooler, Tooling.

CNC PUNCHING & SHEARING CELL

1- 1989 30-TON SALVAGNINI, MDL. S-4, 60" x 120" Sheet, RSX -IIM CNC Control, 48 Station Live Tools, Integral Right Angle Shear, Sheet Loader & Unloader, Chip Conveyor, Oil Cooler, Roll Out Table.

1- 1994 MURATA WEIDEMANN, MDL. SABER 7000, OPTI Shear, s/n 317, 55" x 144" Sheet, FANUC OP CNC Control, 3/16" Capacity, Right Angle Blades, Programmable Blade Clearance, Sheet Loader, Scrap Conveyor, Oil Cooler.



22-TON MURATA WEIDEMANN CNC TURRET PUNCH, MDL. CENTRUM C-2000



300-TON VERNON SSSC, MDL. S2-300-120-54T



30-TON SALVAGNINI CNC PUNCH, MDL. S-4



75-TON CINCINNATI PRESS, MDL. 75 OBS



MURATA WEIDEMANN CNC SHEAR, MDL. 7000 OPTI

Know the Value of Your Assets?
Biditup Does! Call 818.508.7034

an industrial assets company



40-TON ROUSSELLE GAP FRAME PRESS, MDL. 4B



40 KVA ACME SPOT WELDER, MDL. 3-24-40



DIACRO POWER NOTCHER, MDL. 2P



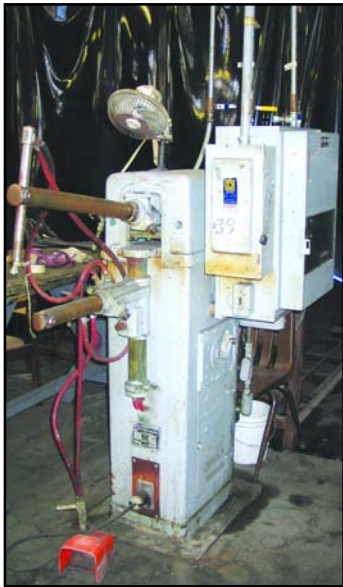
6,000 LB. REGAL SRP POWER REEL, MDL. 6000-24



16" X 40" TONG-IL ENGINE LATHE



JAYBIRD AIR FEEDER, MDL. AF-16-12



50 KVA ACME SPOT WELDER, MDL. 2-24-50



BRIDGEPORT SERIES II VERTICAL MILLING MACHINE



17" X 40" MORE-SEIKI LATHE, MDL. MS850



36" X 14 GA. NIAGARA POWER SHEAR



6" X 18" PARKER-MAJESTIC HAND SURFACE GRINDER



20" X 48" OKAMOTO AUTO. SURFACE GRINDER



10" ABRASIVE CHOP SAW

PRESSES

- 1- 300-TON VERNON SSSDC, MDL. S2-300-120-54T, s/n 15680, 120" x 54" T-Slotted Bed & Ram, 12" Stroke, 30" Shut Height, 14" Adjustment, Light Curtains, Auto Lubrication, Air Counter Balance, 40" Windows.
- 1- 1991 75-TON CINCINNATI, MDL. 75 OBS, S/N 46769, 24" x 36" Bed, 8" Stroke, Programmable Control, Light Curtains, Roller Die Loader, Dual Palm Control Stand.
- 1- 40-TON ROUSSELLE GAP FRAME PRESS, MDL. 4B, S/N 17708, 20" x 48" T-Slotted Bolster, 3" Stroke, 11-3/4" Shut Height, Air Clutch & Brake, Light Curtains, Dual Palm Control Stand.
- 1- 20-TON HANNIFIN C-FRAME HYDRAULIC PRESS, MDL. MOD-F101, s/n C42750, 18" x 20" Table, 15" Stroke, Tonnage Gauge, Hand Lever Control.
- 1- 7 1/2-TON KENCO OBI PRESS, MDL. 1, s/n 210-356, 8" x 11" Bed, 1" Stroke, Electric Trip Mechanical Clutch, Foot Pedal.
- 1- 5-TON AMP CONNECTOR PRESS, MDL. 69875-M, s/n 128013, 8-26 ANG, Foot Pedal.

PRESS ACCESSORIES

- 1- 6000 LB. REGAL POWER REEL, MDL. 6000-24 SRP, s/n 4761874, 24" Arm, Manual Adjustment, (3) Keepers.
- 1- 2500 LB. DALLAS PRESS ROOM POWER REEL, MDL. DPR-2500X12-RH, s/n 20208, 12" Arm, D.C Variable Speed, Manual Adjustment, Keepers.
- 1- 3000 LB. REGAL POWER REEL, MDL. 3000-12-SRP ACB, s/n 11761999, 24" Arm, Clutch & Brake, Variable Speed, Manual Adjustment, Keepers.
- 1- 600 LB. LITTELL PAY OFF REEL, 12" Arm, Manual Adjustment, Keepers.
- 1- JAYBIRD AIR FEEDER, MDL. AF-16-12, s/n 760950, 12" Wide, 16" Stroke, 8" Pull Thru Straightener, Adjustable Table.

GRINDERS

- 1- 20" X 48" OKAMOTO AUTOMATIC SURFACE GRINDER, MDL. PSG-125, s/n 523-1030-399, 20" x 48" Electro Magnetic Chuck & Control, 3 Axis Power w/Incremental Down Feed, Hydraulic Parallel Dresser, Coolant System & Splash Guard.
- 1- 10" X 30" BROWN & SHARPE AUTOMATIC SURFACE GRINDER, MDL. 1030, s/n 523-1030-399, 10" x 30" Electro Magnetic Chuck & Control, 2 Axis Power, Power Elevation On Head, Coolant System & Splash Guard.
- 1- 6" X 18" PARKER MAJESTIC HAND SURFACE GRINDER, 6" x 18" Permanent Magnetic Chuck, 8" Wheel, 1 HP Motor.
- 1- 6" X 18" ABRASIVE HAND SURFACE GRINDER, MDL. 1, 6" x 18" Permanent Magnetic Chuck, 10" Wheel, 1 HP Motor.

To View Complete Asset List, Visit our Website: www.biditup.com

WELDERS

- 1- 50 KVA FEDERAL PRESS TYPE SPOT WELDER, MDL. PA-1-18, s/n 13171, 20" Throat, 8" Gap.
- 1- 50 KVA ACME SPOT WELDER, MDL. 2-24-50, Unitrol Control, 24" Throat, 8" Gap, Electric Foot Pedal.
- 1- 75 KVA FEDERAL PRESS TYPE SPOT WELDER, MDL. PA-1-8, s/n 19252, 11" Throat, 4" Gap, Dual Palm Control.
- 1- 40 KVA ACME SPOT WELDER, MDL. 3-24-40, s/n 2388, Entron Control, 24" Throat, 6" Gap, Electric Foot Pedal.
- 1- 35 KVA ACME PRESS TYPE SPOT WELDER, MDL. 40S SOAR, s/n 1883, Entron Control, 24" Throat, 6" Gap, Electric Foot Pedal.
- 5- 30 KVA ACME SPOT WELDER, MDL. 2-24-30, s/n's 11303, 13222, 6169, 6201, 11304, Entron Control, 24" Throat, 6" Gap, Electric Foot Pedal.
- 3- 30 KVA ACME SPOT WELDER, MDL. 2-24-30, s/n's 6210, 13356, 6209, Unitron Control, 24" Throat, 6" Gap, Electric Foot Pedal.
- 1- 30 KVA ACME SPOT WELDER, MDL. 3-30-30, s/n 2168, Unitron Control, 30" Throat, 6" Gap, Electric Foot Pedal.
- 1- 20 KVA ACME SPOT WELDER, MDL. 2-24-20, s/n 6459, Entron Control, 24" Throat, 6" Gap, Electric Foot Pedal.
- 1- 20 KVA ACME SPOT WELDER, MDL. 2-30-20, s/n 6021, Entron Control, 30" Throat, 6" Gap, Electric Foot Pedal.
- 1- 10 KVA ACME SPOT WELDER, MDL. 1-12-10, s/n 5828, Entron Control, 12" Throat, 5" Gap, Foot Pedal.

DRILLS

- 1- IKEDA RADIAL ARM DRILL, MDL. RM1300, s/n 77249, 5' Arm, 12" Column, Power Elevation, #5MT Spindle, Box Table, Coolant System, 5 HP Motor.
- 1- CINCINNATI BICKFORD RADIAL ARM DRILL, s/n IR5075, 4' Arm, 9" Column, Power Elevation, Box Table, #4MT Spindle, 3 HP Motor.
- 2- EDLUND FLOOR DRILL PRESS, MDL. 2F15, s/n 417, 30" Swing, 26" x 26" Table, Vari-Speed, #2MT Spindle, 1 HP Motor.

MILLING MACHINE

- 1- BRIDGEPORT SERIES II VERTICAL MILLING MACHINE, s/n 566, 11" x 58" Table, 3 Way Power Feeds, 2 Axis Sargon Digital Readout, Variable Speed, Chrome Ways, 4 HP Motor.

LATHES

- 1- 16" X 40" TONG- IL ENGINE LATHE, s/n 00551122, 3 Jaw Chuck, 4 Jaw Chuck, Tool Post, 5 HP Motor.
- 1- 17" X 40" MORI-SEIKI- MODEL MS850, 3 Jaw Chuck, Tool Post, Coolant System, Work Light, 5 H.P. Motor

SAWS

- 1- 10" X 18" JOHNSON HORIZONTAL BANDSAW, MDL. J, s/n 8342, Capacity, 4 Speed, Length Stop Bar, 1 HP Motor.
- 1- 10" ABRASIVE CHOP SAW, 3 HP Motor & Stand.



MOORE JIG BORE, MDL. #3



10"X18" JOHNSON HORIZONTAL BANDSAW, MDL. J



4' X 8' X 3' HEAT TECH, HEATED DIP TANKS



2-TON CM ELECTRIC HOIST CRANE



HANEL AUTOMATIC TOOL STORAGE SYSTEM, MDL. ROTOMAT 936



28" GOULD & EBERHART SHAPER



GALBERTH MODEL PF6055 HYDRAULIC TRASH COMPACTOR



1-TON COFFING JIB HOIST



AGIE OIL PUMP STATION, MDL. DA-10



6,000 LB. CLARK MODEL HWP 60E ELECTRIC PALLET JACKS



45' SEMI TRUCK ENCLOSED TRAILERS

FABRICATION

The Plate Bending Roll Listed Below is Located in Los Angeles, CA and will be Sold via Photo from the Auction Location. For Additional Information, Please Call 818-508-7034.

- 1- 1998 10' X 1" CAPACITY J.M. MONTGOMERY HYDRAULIC PLATE BENDING ROLL, MDL. 4R-120100, 4-Roll Hydraulic Double Pinch, 2-Roller Drive, 0-22.5 FPM, Hydraulic Drop-End Remote Pedestal, 1/32" in Depth at 180°, 16" Top Roll Dia., 14.5" Pinch, GIDDINGS & LEWIS PIC 90 Controls.
- 1- DIACRO POWER NOTCHER, MDL. 2P, 6" x 6" x 16 Ga. Work Guides, Electric Foot Pedal.
- 1- 42" X 20 GA. PEXTO HAND PINCH ROLL.

- 1- 36" X 14 GA. NIAGARA POWER SHEAR, Rear Operated Manual Back Gauge, Square Arm, Front Supports, Foot Treadle.
- 1- 8' X 16 GA. WHITNEY JENSEN COMBINATION HAND BRAKE, MDL. 816, 8" Adjustable Upper Jaw.
- 1- 3-TON PIPEN ARBOR PRESS.
- 1- MILFORD RIVET MACHINE, MDL. 63VH-REV4, s/n 460, 6" Throat, Hopper, Electric Foot Pedal.
- 20- UNIPUNCHES WITH DIES.

JIG BORE

- 1- MOORE, MDL. #3, s/n B1275, 11" x 24" Table, Tooling.

SUPPORT EQUIPMENT

- 1- 28" GOULD & EBERHART SHAPER, 16" Manual Vise, 5 HP Motor.
- 1- AGIE OIL PUMP STATION, MDL. DA-10.
- 1- BARNES 5 HP WATER PUMP ON CART.
- 1- 4' X 8' X 3' HEAT TECH HEATED DIP TANKS, Beta P-1800 Controls, 5 Tanks.
- 1- HANEL AUTOMATIC TOOL STORAGE SYSTEM, MDL. ROTOMAT 936, s/n 68-109, (24) 115" x 24" x 12" Compartments, 486 Lbs. Compartment Load Capacity, 11,682 Lbs. Total Load Capacity, 820/1100 RPM.
- 1- 1999 GALBERTH HYDRAULIC TRASH COMPACTOR, MDL. PF6055, s/n S03555, 25 Cubic Yards.
- 2- VARIABLE TRANSFORMER SWITCH STATIONS.

- 1- 18" x 18" x 18" BLUE M ELECTRIC OVEN, MDL. POM-566A, 500 Degrees, s/n JA-870.
- 1- HORIBA GAS ANALYZER TESTING STATION.
- 1- 1994 POWER DYNATEC KVA POWER GENERATOR, MDL. XIGR 8, s/n 2474 MMGI.
- 1- 24" X 36" STANDRIGE 4" GRANITE SURFACE PLATE W/STAND.
- 2- 6000 LB. CLARK ELECTRIC PALLET JACKS, MDL. HWP 60E, s/n's 365, 419.
- 1- 2-TON CM ELECTRIC HOIST CRANE, Bridge, Pendant Controls.
- 2- 1-TON COFFING JIB HOISTS, 8' Arm, Hand Controls.
- 2- 2000 LB. AND FLOOR SCALES, MDL. FC-20K, Digital Controls, 48" x 48" Table.
- 3- 45' SEMI TRUCK ENCLOSED TRAILERS.

AIR COMPRESSORS

- 1- 1998 INGERSOLL RAND ROTARY SCREW, MDL. SSREP300, s/n DE1226U98231, 300 HP Motor, 1250 CFM, Enclosed.
- 1- INGERSOLL RAND ROTARY SCREW, MDL. SSREP250, s/n D6559488E, 250 HP Motor, 1100 CFM.
- 1- INGERSOLL RAND 7 HP MOTOR, MDL. T-30, s/n 146376, 80 Gallon Tank.

- 1- INGERSOLL RAND 5 HP MOTOR, MDL. T-30, s/n 628088, 80 Gallon Tank.
- 2- 2002 TECHNOTRANS CHILLERS, MDL. EX7.0, s/n 46045000, 10 GPM, 70 Gallon, HP Motor.
- 1- INGERSOLL RAND AIR DRYER, MDL. HG1000L, s/n 882HG8603, 200 P.S.I.
- 1- 1000 GALLON VERTICAL AIR TANK.

MISCELLANEOUS

Office Furniture, Conference Tables & Chairs, Work Tables, Dolly Carts, File Cabinets, Cradenza, C Clamps, Dividing Heads, Drill Bits, End Mills, Cutters, Eye Hooks, Fans, Pallet Jacks, Sun Tech Radiant Heaters, Banding Carts, Fire Proof Storage Cabinets, Reels Of Electric Wire, Nails, Screws, Bolts, Washers, Nuts, Air Filters, Conduit, Fuses, Switches, Relays, Bench Vises, Wrenches, Hand Power Tools, Socket Sets, Wire Cutters, Clamps, Air Hose, Tool Boxes, Pipe Fittings, Roller Conveyors, Picnic Tables, Barrel Tumbler.

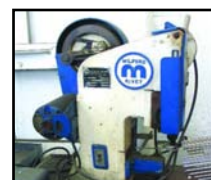
NOTE: Hundreds of Wire Baskets and Rolled and Flat Stock Material, Thousands of Feet of Pallet Racking.



10' X 1" CAPACITY J.M. MONTGOMERY HYDRAULIC PLATE BENDING ROLL, MDL. 4R-120100



WHITNEY JENSEN, MDL.816 COMBINATION HAND BRAKE



MILFORD MDL.63VH-REV4 RIVET MACHINE



INGERSOLL RAND MDL. SSREP300 ROTARY SCREW



ASSORTED PRESS DIES



PALLET JACKS



WIRE BASKETS



PALLET RACKING



WALL OF MISC. HARDWARE



MISC. HARDWARE



AIR COMPRESSORS



OFFICE FURNITURE



FILE CABINETS

Need an Appraisal? Call 818.508.7034



an industrial assets company

FIRST CLASS PRE-SORT
MAIL U.S. POSTAGE
PAID
PERMIT NO. 32365
LOS ANGELES, CA

11426 Ventura Blvd.
Second Floor
Studio City, CA 91604
Steven Mattes, Auctioneer
CA Bond #CSC3062775

Thinking of having an auction?
Need an appraisal?
Know of a facility closure?
Call: 818.508.7034, Ext. 12
Email: info@bidityup.com

Bidityup! Live On-Site
AUCTION
bid live in Vernon, CA

Thursday, May 27 Beginning at 10:30am 5119 District Blvd., Vernon, CA	Assets No Longer Required in the Continuing Operations: THERMADOR A DIVISION OF BSH HOME APPLIANCES CORPORATION WORLD FAMOUS MANUFACTURER OF HOME KITCHEN APPLIANCES	CNC Fabricating, Stamping & Machine Tools
--	---	--

Upcoming Auctions

TUESDAY, JUNE 8
Assets No Longer Required in the Continuing Operations:
RHC/SPACEMASTER CORPORATION
 World Famous Store Fixture Manufacturer
 Live On-Site • Melrose Park, IL

WEDNESDAY, JULY 14
NCI BUILDING SYSTEMS, L.P.
 Pre-Fabricated Building Manufacturer
 Live On-Site • Southlake, TX

Terms

Sale Conducted by: bidityup!, Subject to our customary terms of sale, (Available at the auction site on the day of the sale), and any and all amendments and modifications announced by the auctioneer at the time of the auction. The auctioneer and seller make no warranties or guarantees, expressed or implied, as to the defects in or the correctness or accuracy of the descriptions in any advertising of any item(s) being auctioned and will not be responsible for any advertising discrepancies or inaccuracies of any kind. All items sold will be on an "AS IS", "WHERE IS", and "WITH ALL FAULTS", basis "WITHOUT EXCEPTION" and "WITH REMOVAL AT BUYER'S RISK AND EXPENSE". AUCTIONEER AND SELLER MAKE NO WARRANTIES OR GUARANTEES OF ANY KIND, EXPRESSED OR IMPLIED AS TO THE NATURE, QUALITY, VALUE OR CONDITION OF THE ITEM(S) BEING AUCTIONED OR ITS (THEIR) SUITABILITY FOR ANY USE. AUCTIONEER AND SELLER EXPRESSLY AND SPECIFICALLY DISCLAIM WITHOUT LIMITATION ANY WARRANTY OF MERCHANTABILITY OR FITNESS FOR A PARTICULAR PURPOSE. AUCTIONEER SHALL NOT BE LIABLE FOR SPECIAL, CONSEQUENTIAL OR INCIDENTAL DAMAGES. It shall be the buyer's obligation to verify information and descriptions of property prior to sale. bidityup!, and its advertising agency assume no liability for errors or omissions in this brochure. The auctioneer does not warrant the age, accuracy, genuineness, authenticity, description, weight, count or measure of any listings specified herein. Although it is not likely, auction sales are subject to cancellation or postponement, and sometimes items are withdrawn from the sale, kindly contact bidityup!, prior to travel as there will be no reimbursements. On the day of the sale, all successful bidders must immediately pay the full purchase price in cash, certified funds, cashiers check, wire transfer or company check with a letter from the buyer's bank guaranteeing unqualified payments to bidityup! This letter is valid until 30 working days after the auction sale. Company checks without letter from bank guaranteeing unqualified payment will not be accepted. The failure to make payment promptly shall be considered default and each lot or lots so purchased will be placed for resale. The buyer must pay the total invoice price for all the lots purchased before any removal can begin. All buyers must pay applicable sales tax (unless evidence of exemption is provided to auctioneer's satisfaction). Buyers are responsible for the transportation, associated costs and risks involved in the removal of purchased item(s). Certain items may contain residual chemicals and/or hazardous materials. The purchaser(s) hereby indemnify and hold harmless the auctioneer and seller from any and all damages, claims or liability from any injuries to persons or property of any type whatsoever caused during the sale of, during the removal, or during use or operation of the purchased item(s). If you are unable to attend, please contact us regarding placing a proxy bid. PLEASE NOTE: ALL SALES ARE SUBJECT TO A BUYER'S PREMIUM.

Can't Attend the Sale in Vernon, CA?
Call 818.508.7034 to Place a Proxy Bid or Let us Bid via Phone for You!

Know the Value of Your Assets? Bidityup Does! Call 818.508.7034