

**biditup! live on-site**

# **auctions**

**EQUIPMENT FORMERLY OWNED BY**

**LINK-BELT CONSTRUCTION COMPANY, L.P., LLLP**

**CNC Machine Shop, CNC Vertical & Horizontal Mills,  
CNC Machining & Turning Centers, TOCCO Heat Treat Dept.,  
Fabricating Equipment, Facing Machines & Machine Tools**

## **Auction Location #1**

Tuesday, July 15th

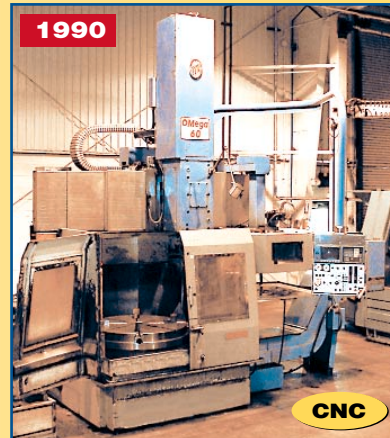
Beginning at 10:30am, Eastern

2651 Palumbo Drive, Lexington, Kentucky

## **Preview Location #1**

Monday, July 14th

9am to 4pm and morning of sale



## **TROY TOOLING, INC.**

**AN ISO 9001/QS9000 TE REGISTERED FIRM**

**Large Automotive Mold Making & RIM Molding Shop  
& Large Mold Die Hydraulic Tryout Presses**

## **Auction Location #2**

Wednesday, July 16th

Beginning at 10:30am, Eastern

1842 & 1890 Rochester Industrial Drive

Rochester Hills, Michigan

## **Preview Location #2**

Tuesday, July 15th

9am to 4pm and morning of sale



*Michigan Sale In Conjunction with:*



**WILLIAMS & LIPTON COMPANY**

**AUCTIONEERS • LIQUIDATORS • APPRAISERS**

**Phone: 248-646-7090**

**[www.biditup.com](http://www.biditup.com)**

biditup! live on-site

# [auctions](#)

## Auction #1

Equipment Formerly Owned By:

**LINK-BELT CONSTRUCTION COMPANY, L.P., LLLP**  
**CNC Machine Shop, CNC Vertical & Horizontal**  
**Mills, CNC Machining & Turning Centers,**  
**TOCCO Heat Treat Dept., Fabricating**  
**Equipment, Facing Machines & Machine Tools**

Tuesday, July 15  
 Beginning at 10:30am, Eastern  
 2651 Palumbo Drive, Lexington, KY

## Preview #1

Monday, July 14  
 9am to 4pm and morning of sale

## Directions #1

FROM BLUE GRASS AIRPORT Lexington, KY  
 Depart Airport on Local Road(s) (East) Bear LEFT (North-East) onto Vaguely Blvd. Bear LEFT (North) onto Airport Rd Turn RIGHT (East) onto US-60 [Versailles Rd]. Turn RIGHT (South) onto Ramp. Merge onto SR-4 [SW New Circle Rd] (South). Turn RIGHT (East) onto Palumbo Dr. Watch for Auction Signs.

## Lodging #1

**Best Western Inn**  
 2241 Elkhorn Rd.  
 Lexington, KY  
 859-293-2202

**Comfort Inn**  
 2381 Buena Vista Rd  
 Lexington, KY  
 859-299-0302

## Auction #2

**TROY TOOLING, INC.**

AN ISO 9001/QS9000 TE REGISTERED FIRM

**Large Automotive Mold Making**  
**& RIM Molding Shop & Large Mold**  
**Die Hydraulic Trycut Presses**

Wednesday, July 16  
 Beginning at 10:30am, Eastern  
 1842 & 1890 Rochester Industrial Drive  
 Rochester Hills, Michigan

## Preview #2

Tuesday, July 15  
 9am to 4pm and morning of sale

## Directions #2

FROM METRO AIRPORT (Detroit, MI)  
 Take I-94 E to I-75 N. Take M059 to Crooks Road Exit. Proceed Left (North) to Hamlin Rd. Go Right (East) to Rochester Industrial Dr. Watch for Auction Signs.  
 (Site Location 1842 & 1890 are Located Next Door to One Another)

## Lodging #2

**Best Western Inn**  
 (2 miles from site)  
 1919 Star Batt Dr  
 Rochester Hills, MI  
 248-299-1210

**Red Roof Inn**  
 (2 miles from site)  
 2580 Crooks Rd  
 Rochester Hills, MI  
 248-853-6400



## Auction #1: Link-Belt Construction Company, L.P., LLLP



OMEGA, O-M LTD CNC VERTICAL BORING MILL, MDL.VT5-10N



GRAY 60" VTL

## CNC MACHINING CENTERS

- 1- 1992 CINCINNATI MILACRON 20VC-1800 VERTICAL MACHINING CENTER, s/n 47997, 30 ATC, Pallet Changer, #50 Taper, Acramatic 850 CNC.
- 1- 1990 CINCINNATI MILACRON 15VC-1500 VERTICAL MACHINING CENTER, s/n 7015B01890019, 26 ATC, Speeds 40-6000 RPM, 20 HP, Table Changer, Acramatic 850 CNC.
- 1- 1986 CINCINNATI MILACRON 10HC HORIZONTAL MACHINING CENTER, s/n 47381, Speeds 20-4000 RPM, Acramatic 850 CNC.

## CNC LATHES

- 1- 1993 CINCINNATI MILACRON CINTURN TURNING CENTER, MDL. 15C, s/n 5305C15-80-040-RL93, 30 HP, Speeds 60-1600 RPM, Acramatic 850SX CNC Controls, 15" Chuck w/ Chip Conveyor.
- 1- 1989 GIDDINGS & LEWIS 50C "MASTERLINE" CNC CHUCKER, s/n 532-1014-89, 18" Chuck, 15" 3-Jaw Power Chuck, GE Fanuc 10T CNC.
- 1- 1988 GIDDINGS & LEWIS 50U "MASTERLINE" CNC LATHE, s/n 532-2004-88, 18" Chuck, 80" Centers, Steady Rest, Tailstock, Chip Conveyor.
- 1- LODGE & SHIPLEY NUMERITURN IV CNC LATHE, s/n 49628, 25" X 120" Capacity, GE Mark Century 550.

## ENGINE LATHE

- 1- ENCO ENGINE LATHE 14" X 40", MDL.-111-3310, s/n 950180, 8" 3-Jaw, 10" 4-Jaw, Steady Rest, Follow Rest, Tool Post.

## TURRET LATHES

- 1- WARNER & SWASEY TURRET LATHE, NO. 5, s/n 22656724657-5011; w/Stock Pusher; 25-1000 RPM.

## GEAR MACHINERY

- 1- BARBER COLEMAN GEAR HOBBER MDL. 16-56, s/n 3922 w/Outboard Support.

## CNC HORIZONTAL BORING MILL

- 1- 5" GIDDINGS & LEWIS CNC TABLE TYPE HORIZONTAL BORING MILL, MDL. G50T, s/n 450-1013-77, 84" Vertical Travel, 84" Table Cross Travel, 48" X 96" Table, 30 HP, #50 Taper, (New Getty Drives & Ball Screws in 1999).

## ROTARY TABLE

- 1- 48" X 48" G & L AIR LIFT INDEX TABLE.

## CNC VERTICAL BORING MILLS

- 1- 1990 OMEGA, O-M LTD CNC VERTICAL BORING MILL MDL VT5-10N, s/n MN894400, 12 Station ATC, 48" 4-Jaw Table, Chip Conveyor, Speeds to 472 RPM, 60 HP, Fanuc 15T CNC Control.
- 1- REBUILT 1991 60" GRAY CNC VERTICAL TURRET LATHE MDL. 60RM, s/n 9961, 3-Jaw Table, 66" Swing, Turret & Side Heads, Fanuc CNC Control, w/Chip Conveyor.



CINCINNATI MILACRON 15VC-1500 VMC



G & L MASTERLINE UNIVERSAL CNC LATHE MDL. 50U



CINCINNATI 20VC-1800 NC MACHING CENTER

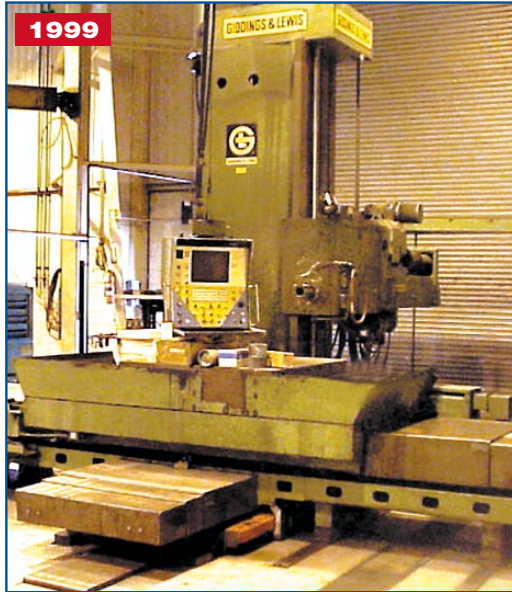
To Schedule an Auction or an Appraisal, Call Our Studio City, CA Office at 818.508.7034.



## Auction #1: Link-Belt Construction Company, L.P., LLLP

## Terms

Sale Conducted by: biditup!, Subject to our customary terms of sale, (Available at the auction site on the day of the sale), and any and all amendments and modifications announced by the auctioneer at the time of the auction. The auctioneer and seller make no warranties or guarantees, expressed or implied, as to the defects in or the correctness or accuracy of the descriptions in any advertising of any item(s) being auctioned and will not be responsible for any advertising discrepancies or inaccuracies of any kind. All items sold will be on an "AS IS", "WHERE IS", and "WITH ALL FAULTS", basis "WITHOUT EXCEPTION" and "WITH REMOVAL AT BUYER'S RISK AND EXPENSE". AUCTIONEER AND SELLER MAKE NO WARRANTIES OR GUARANTEES OF ANY KIND, EXPRESSED OR IMPLIED AS TO THE NATURE, QUALITY, VALUE OR CONDITION OF THE ITEM(S) BEING AUCTIONED OR ITS (THEIR) SUITABILITY FOR ANY USE. AUCTIONEER AND SELLER EXPRESSLY AND SPECIFICALLY DISCLAIM WITHOUT LIMITATION ANY WARRANTY OF MERCHANTABILITY OR FITNESS FOR A PARTICULAR PURPOSE. AUCTIONEER SHALL NOT BE LIABLE FOR SPECIAL, CONSEQUENTIAL OR INCIDENTAL DAMAGES. It shall be the buyer's obligation to verify information and descriptions of property prior to sale. biditup!, and its advertising agency assume no liability for errors or omissions in this brochure. The auctioneer does not warrant the age, accuracy, genuineness, authenticity, description, weight, count or measure of any listings specified herein. Although it is not likely, auction sales are subject to cancellation or postponement, and sometimes items are withdrawn from the sale, kindly contact biditup!, prior to travel as there will be no reimbursements. On the day of the sale, all successful bidders must immediately pay the full purchase price in cash, certified funds, cashiers check, wire transfer or company check with a letter from the buyer's bank guaranteeing unqualified payments to biditup! This letter is valid until 30 working days after the auction sale. Company checks without letter from bank guaranteeing unqualified payment will not be accepted. The failure to make payment promptly shall be considered default and each lot or lots so purchased will be placed for resale. The buyer must pay the total invoice price for all the lots purchased before any removal can begin. All buyers must pay applicable sales tax (unless evidence of exemption is provided to auctioneer's satisfaction). Buyers are responsible for the transportation, associated costs and risks involved in the removal of purchased item(s). Certain items may contain residual chemicals and/or hazardous materials. The purchaser(s) hereby indemnify and hold harmless the auctioneer and seller from any and all damages, claims or liability from any injuries to persons or property of any type whatsoever caused during the sale of, during the removal, or during use or operation of the purchased item(s). If you are unable to attend, please contact us regarding placing a proxy bid. PLEASE NOTE: ALL SALES ARE SUBJECT TO A BUYER'S PREMIUM. BUYER'S PREMIUM, 10%.



G & L HORIZONTAL BORING MILL, G50-T

### COMPLETE HEAT TREATING DEPARTMENT

(FOR SHAFTS & GEARS)

- 1- LINDBERG 82201 FURNACE, s/n 24360
- 1- TOCCO GEAR SCANNER, MDL. OL-204, s/n P4-3345-21.
- 1- TOCCO SHAFT SCANNER, s/n P4-344-51.
- 1- LINDBERG DRAW FURNACE, MDL. 487248-12, s/n 24422, 1250°.

### PALLET CHANGERS

- 1- SMW SETUP SWITCHER / (2) 40" x 20" T-Slotted Drilled & Tapped Pallets.
- 1- SMW SETUP SWITCHER w/Receiver Unit.

### PALLETS

- 2- 40" X 20" DRILLED & TAPPED T-SLOTTED PALLETS, (1) 40" x 20" T-Slotted Pallet.
- 1- 40" X 20" T-SLOTTED PALLETS, w/(2) 16" 3 Jaw Bison Chucks w/Misc. Jaw.
- 1- 20" X 40" T-SLOTTED PALLET, w/(2) Kurt D-111 Vises, Misc Jaws.
- 3- 18" X 30" T-SLOTTED PALLETS.
- 1- HYDRAULIC PALLET STORAGE SYSTEM.
- 1- PALLET TABLE, w/Fixture Plate.
- 2- PALLET TABLES, w/(2) Kurt D-80 Vises
- 2- T-SLOTTED PALLET TABLES, w/(2) 12" 3-Jaw Chucks.
- PALLET SHUTTLE RAIL.
- PALLET SHUTTLE TRANSFER TABLE.



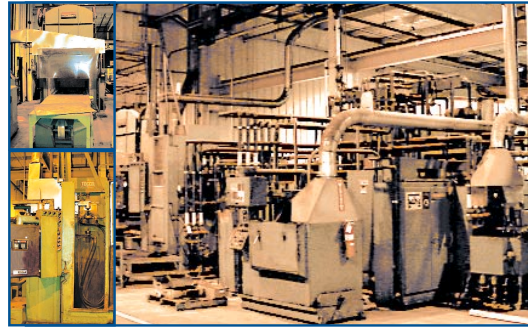
G & L MASTERLINE CNC LATHE CHUCKER, MDL 50C



LANDIS OD GRINDER



DEVLIEG SPIRAMATIC JIG MILL, MDL 43H-72



COMPLETE TOCCO HEAT TREAT DEPARTMENT



CINCINNATI  
CINTURN 15C  
MC CHUCKING  
CENTER

### ANGLE PLATES

- 1- 16" X 30" DEVLIEG ANGLE PLATE.
- 1- 21" X 14" T-SLOTTED ANGLE PLATE.

### ROLLER CONVEYOR

- 1- 80" X 42" ROLLER CONVEYOR.

### OD GRINDERS

- 1- LANDIS OD GRINDER, s/n 861-53, 10" x 96", New Vari-Speed Danford Electronic Drives for Work Head & Wheel Head, 16" x 3" Wheel, 15 HP, 1765 Max. RPM.
- 1- LANDIS PLAIN OD GRINDER, 6X 18 TYPE 1R, s/n 836-63, 5 HP, 60-600 RPM.

### BELT GRINDER

- 1- HAMMONS ABRASIVE BELT GRINDER, MDL-600-D, s/n 1467, 2 HP, 1725 Motor RPM.

### PNEUMATIC PRESS

- 1- DAKE PNEUMATIC PRESS, Air Over Oil, 44" Between Rails.

### JIG MILL

LARGE QUANTITY OF DEVLIEG TOOLING

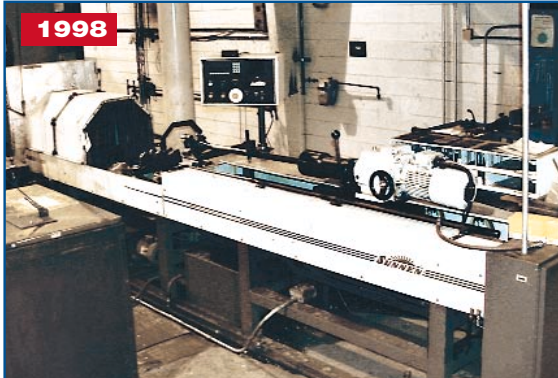
- 1- DEVLIEG JIG MILL MDL. 43H72, s/n 9046, 48" Vertical Travel, 72" Table Travel, 10 HP, #50 Taper, Digital Readouts.

Heard of Any Facility Closures? Finder's Fees Paid! Call: 818.508.7034

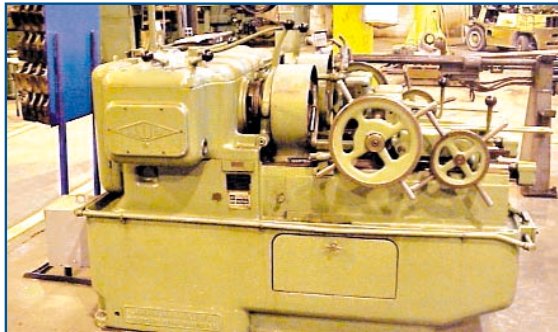




## Auction #1: Link-Belt Construction Company, L.P., LLLP



SUNNEN HORIZONTAL HONE MDL HL-1501E



LANDIS LANDMACO DOUBLE HEAD THREADING MACHINE MDL. 20CL2B-69

### THREADER

- 1- LANDIS LANDMACO DOUBLE HEAD THREADING MACHINE MDL. 20CL2B-69.

### LAPPING MACHINE

- 1- LAPMASTER LAPPING MACHINE, s/n 3230.

### FACING & CENTERING MACHINE

- 1- DAVIS & THOMPSON "ROTMATIC" FACING & CENTERING MACHINE, s/n 1397, 120" Between Adjustment Centers, 1750 RPM, 40 HP, Used for Double Head Facing & Boring.

### PARTS CLEANER

- 1- 1997 GRAYMILLS LIFTKLEEN HEAVY DUTY COMMERCIAL TYPE PARTS CLEANER.

### RADIAL DRILLS

- 1- CARLTON RADIAL DRILL, s/n 4A5610, 8' Arm 19" Column, Spindle Speeds to 1500 RPM, 20 HP Coolant (Rebuilt Head 1999).

### HONES

- 1- 1998 SUNNEN HL-1501E HORIZONTAL HONE, s/n 2VI-1047, 72" Stroke, Wide Range.  
1- SUNNEN MBB-1600 HORIZONTAL HONE, s/n 40780.  
1- MICROMATIC VERTICAL HONING MACHINE MDL. 728, 3 HP, up to 2" Dia. x 8" L.



CINCINNATI MILACRON HMC, MDL-10HC-1500



DAVIS & THOMPSON ROTO-MATIC FACE & CENTER MACHINE



CARLTON RADIAL ARM DRILL



MICROMATIC VERTICAL HONING MACHINE MDL-728



BARBER-COLMAN GEAR HOB, MDL-16-56



BUFFALO UNIVERSAL IRONWORKER, NO. 2-1/2B

### TOOLING PRESETTER

- 1- 1995 PARLEC TOOLING PRESETTER, MDL. #240, s/n 113005-1295.

### BANDSAWS

- 1- 1989 MISSLER HORIZONTAL BANDSAW BY KLINGELHOFER CORP., MDL. DEB280N, s/n 26238, w/Chip Conveyor.  
1- 1996 MARVEL VERTICAL BANDSAW, MDL. 81A11PC, s/n E-480611PC, w/Hyd. Feed Table, 45 Deg. Blade Tilt, 60-400 RPM, 10 HP.

### IRONWORKER

- 1- BUFFALO UNIVERSAL IRONWORKER, NO. 2-1/2B, s/n 74W1012, Punch Shear, Cope, Notch & Bar Cutter.

### TOOLING

Misc. 50 Taper Solid Holders • (20) 50 Taper Misc. Holders • (4) 50 Taper Boring Tools & Misc. Holders, (8) Total • (9) Boring Heads 50 Taper & Misc. Tooling • Tooling Rack w/Tooling • Misc. Tooling & Rack • Misc. Tooling & Collet Pads & Tooling for Warner & Swasey • Tapmatic 60x Tapping Head & Reverse Tapping Head • (127) Misc. 40 Taper Holders • 12-Shelf Tooling Rack for 40 Taper Tooling • 10-Shelf Tooling Rack for 40 Taper Tooling • (3) 6-Shelf Tooling Racks • 4-Shelf Tooling Rack • (48) 40 Taper Solid Tool Holders • (30) 40 Taper Misc. Tool Holders • (10) 40 Taper Drill Holders • Misc. Tooling (68) Pcs. 50 Taper • Misc. Tooling (121) Pcs. 40 Taper • Drill Holder (27) Pcs. 40 Taper • 8" Wide Swivel Vase w/Serrated Hard Jaws • Misc. Tooling Boring Bars, Bushings, & Turning Tools • Skid of Assorted Hones & Hone Tooling • (3) Misc. Workbenches w/Assorted Tooling • #50 Taper Tooling Cart • Kurt D-80 Vise • (147) Misc. 45 Taper Tool Holders • 10-Shelf 45 Taper Tooling Rack • Misc. Collets for Barber-Coleman Gear Hob.

### MISCELLANEOUS

No. 50 Devlieg Spiromatic Jig Mill Holders • Misc. Tooling & Tool Holders for Devlieg Jig Mill • 32" Square T-Slotted Drilled & Tapped Table Top • Misc. Lathe Tooling & Collet Pads • 48" x 42" Air Assist Indexing Table • Rack of Misc. Thread Chasers • Dip Seal Plastic Melting Pot • Large Misc. Boring Bars • (5) Skids of Misc. Bolts & Nuts • (2) Skids of Misc. Electric Motors • (2) Skids of Electric Motors & Computer • (2) Skids of Misc. Pulleys & Mandrells • 80"x42" Table for Radial Arm • 33"x26" 90° Work Table • Misc. Boxes of Gear & Thread Chasers • Roller Conveyor Table • Pallet Cart • Skid of Assorted Bandsaw Blades • 45' Roller Conveyor Table • 40' Roller Conveyor Table • (3) Crates of Misc. Induction Heating Coils • (2) Hydraulic Test Stations • Skid Full Misc. Chuck Jaws for G & L Lathe • Work Bench w/Shelves and 110 Volt • FANUC AC 205 AC Servo - New.



MARVEL VERTICAL BANDSAW, MDL 81A11PC



MISSLER HORIZONTAL BANDSAW BY KLINGELHOFER CORP., MDL DEB280N



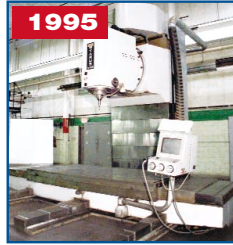
## Auction #2: Troy Tooling, Inc.



TARUS 3-AXIS MILLING MACHINE



TARUS CNC 5-AXIS VERTICAL MILLING MACHINE



TARUS 4-AXIS CNC MILLING MACHINE



TARUS 4-AXIS HORIZONTAL CNC GUN DRILLING MACHINE

### CNC VERTICAL MACHINING CENTERS

- 1- 1999 FADAL 21 POSITION AUTOMATIC TOOL CHANGER CNC VERTICAL MACHINING CENTER MDL. 4020AHT-917-1, s/n 9902354, 20" X 48" Table Size, Travels: X=40", Y=20", Z=20", Fadal Mdl. 88HS, CNC Control, 10,000 RPM Spindle Speed Range, Coolant System, Motors & Controls.
- 1- 1997 FADAL "HIGH TORQUE" 21-POSITION AUTOMATIC TOOL CHANGER CNC VERTICAL MACHINING CENTER MDL. 907/6030HT, s/n 9705049, 30" X 62 1/2" T-Slotted Power Feed Table, Power Feed Vertical Head Stock, Travels X=60", Y=30" & Z=30", 22 1/2-HP Motor, 10,000-RPM Spindle Speed Range, Way Covers, Bijur One Shot Lubrication System, Gusher Pump Coolant System, Splash Enclosure, Light, Fadal Mdl. 88HS, CNC Control Console, Motors & Controls, Personal Computer System.

### CNC VERTICAL MILLING MACHINES

- 1- 1999/2000 TARUS CNC 5-AXIS SINGLE SPINDLE, HIGH SPEED, DUAL COLUMN VERTICAL MILLING MACHINE MDL. HS-8412/48, s/n HSDC1807043, 72" X 120" Table X 70,000 LB Load Capacity, Travels: X=120", Y=114", Z=44", 54" Day Light, Universal Motorized Milling Head, Rotates 360° X 45° Tilt 10 HP Milling Spindle, #50 Taper, 10,000 RPMs, 84" X 120" Work Area, Tarus Mdl. MBX92-EWS3, Multi-Axis, CNC Controller, Hydraulics, Motors & Controls.
- 1- 1997 PHOENIX-KAFO 4-AXIS CNC COPY & CONTOUR MILLING MACHINE MDL. VMM-3010, s/n 131065, 47" X 120" T-Slotted Power Feed Travel X 4-Way Bed, 90° Power Feed Vertical Swivel Head Stock, 7" Power Feed Quill, Power Clamp, One Shot Lubrication System Way Covers, 2,000 RPMs, Auger Screw Conveyor, Work Light, Harbor Oil Cooler, Hydraulic Power Supplier, Fanuc Mdl. VMM-3010, Series 15-M, CNC Pendant Control Console, Hydraulics, Motors & Controls, P/C Interface System, Prospector Machining Controller, Keytronic Machining Controller.
- 1- 1995 TARUS 4-AXIS CNC EXTRA HEAVY DUTY VERTICAL OPEN SIDED ROUGHING MILLING MACHINE MDL. RMXH6012-64, s/n RMXH60121167030031, 60" X 128" Table X 60,000 LB Load Capacity, Travels: X=120", Y=60", Z=58", 75 HP Main Spindle Motor, #5 Taper, 3,000 RPMs, 12" Quill Travel, 45° Swivel Head Stock, XYZ=300" Per Minute, Tarus Mdl. MBX, 92, Controller, Hydraulics, Motors & Controls.
- 1- 1985 TARUS 3-AXIS OPEN SIDE DUPLICATOR MILLING MACHINE MDL. DU8412, s/n DU305054C, Retrofitted CNC MBX, 92 Controller, 70 X 120", T-Slot Power Feed Table, Power Feed Vertical Quill & Head Travel, 10 HP A.C. Spindle Motor Drive, Way Covers, One Shot Lubrication System, Transformer, Hydraulics, Motors & Controls.

### RIM MOLDING SYSTEM (AS LATE AS 2001)

**NOTE: RIM MOLDING EQUIPMENT OFFERED IN WHOLE AS WELL AS PIECEMEAL**

- 1- 2001 BATTENFELD/KRAUSS-MAFFEI RETROFITTED DUAL PRESS RIM MOLDING SYSTEM, (2) BATTENFELD 4-POST HYDRAULIC DOWN ACTING PRESSES, MDL. WF, s/n's 44005-1087 & 44006-P10-87 (1987), 49" X 98 1/2" Tilt Tapped Bed & Rams, Floor Standing, 7" Die Tie Bars, 78" Day Light, Independent Control Panel Consoles, Siemens Mdl. S6, CNC Controls, Hydraulics, Motors & Controls, Interconnected w/: 2001 Krause-Maffei Hydraulic Pump & RIM Control System, Mdl. 3M01100, (2) Full Poly & ISO Rim Pumping Systems, Pumps, Filters, Transformers, Pipe Work, Electrical Panels, Advantage Hot Oil Systems, (3) DZAR Mold Thermolators, Motors & Controls.
  - 1- 1987 NEWMAN 150-TON CAPACITY 4-POST HYDRAULIC DOWN ACTING DIE TRYOUT PRESS (RIM SYSTEM), MDL. HP 0 188, s/n 14475, 72" X 102" Tapped Bed & Ram, 102" Daylight, 72" Stroke, 3" Die Tie Bars, 15 H.P. Top Mounted Hydraulics, Motors & Controls, w/Interconnected: Cincinnati Milacron Mdl. HT, RIMM, 2-Part Mdl. ISO, Poly RIM System, s/n 3737A01-84-1, Independent Hydraulic Power Supplier, (2) AEC Mdl. Temperature Controllers, (1) Mokon Mold Temperature Controller, (1) Sterling Mold Temperature Controller, s/n 48120.
  - 1- CINCINNATI MILACRON 125-TON REACTION INJECTION MOLDING MACHINE-CLAM SHELL CLAMP PRESS, MDL. 125-7-7R, s/n 3742A01-87-10, 48" X 108" Base Size, Tilt Clamp Frame, Cincinnati Mdl. TF1000R, RIM Mix System, s/n 3736A01-87-8, Self Contained Hydraulic Unit, Cincinnati Milacron Mdl. RC2.5WS-930 -41HRX, Chilling System, s/n 12726, Motors & Controls, Filters, Pumps, Hose.
- 2- VERTICAL STAINLESS STEEL TANKS.**
- 1- CAYUBA VERTICAL FIXED BASE DISSOLVER, MDL. 25, s/n 3503231, Motors & Controls.
  - 1- 1989 COWLES DISSOLVER, MDL. W-24-1, s/n LA-147, Motors & Controls.

### CNC GUN DRILL

- 1- 1998/1999 TARUS 4-AXIS HORIZONTAL CNC DEEP HOLE GUN DRILLING MACHINE MDL. TPTCGD 508S, s/n TPTCGDCNC-1644037345, 2" Drill X 84" Depth, Extra Heavy Duty Multi-Spindle, Traveling Column Auxiliary Spindle, 2" Diameter Drill Capacity X 84" Depth, 60" X 96" Table X 60,000 LB Load Capacity, Travels: X=96", Y=60", Z=60", 30" Column, 48" X 96" Work Cube, 0 To 3,400 RPM Spindle Speeds, Automatic Chip Conveyor, 700 Gallon Coolant System, Tarus Mdl. MBX-92-G/P150, Multi, Axis CNC Controls, Hydraulics, Motors & Controls.

### COORDINATE MEASURING MACHINES

- 1- 1997 TARUS COMPUTERIZED LASER CARBON FIBER 5-AXIS COORDINATE MEASURING MACHINE MDL. TPINTB1275, s/n TPINTB1492015273, 60" X 120" X 12" Starret Granite Surface Plate on Steel Stand, Travels: X=143.84", Y=81.12", Z=60.26", Renishaw Mdl. PH10M, Probe & Motorized, Interface (P14-2) (Phc10-2), Tooling, Laser System, Tarus Mdl. MBX-92-1, PC Controller, Software, (2) Printers, Etc.
- 1- 1994 7-TON GIDDINGS & LEWIS COORDINATE MEASURING MACHINE MDL. LC-7, s/n 694840, 74" X 144" X 6" Steel Tapped Floor Plate, Travels X=130", Y=72" & Z=60", Scribe, Giddings & Lewis 4-Axis Measurement Processor, Tooling.
- 1- 1986 TARUS COMPUTERIZED COORDINATE MEASURING MACHINE MDL. TPINCL 0854, s/n TPCL 3940120015, 55" X 120" X 24" Tapped Granite Surface Plate, Travels X=48", Y=72", Z=100", Renishaw Mdl. PH9MK2, Probe & Controller, Tarus Mdl. 9300, PC Based Controller, Tooling, Software, Motors & Controls.



FADAL 6030 21-POSITION AUTOMATIC TOOL CHANGER CNC VMC



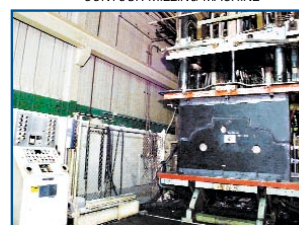
FADAL 4020 21 POSITION AUTOMATIC TOOL CHANGER CNC VMC



PHOENIX - KAFO 4-AXIS CNC COPY & CONTOUR MILLING MACHINE



TARUS COMPUTERIZED LASER CARBON FIBER 5-AXIS CMM



CINCINNATI MILACRON 125-TON REACTION INJECTION MOLDING MACHINE - CLAM SHELL CLAMP PRESS, MDL. 125-7-7R



BATTENFELD / KRAUSS - MAFFEI RETROFITTED DUAL PRESS RIM MOLDING SYSTEM, (2) BATTENFELD 4-POST HYDRAULIC DOWN ACTING PRESSES, MDL. WF

## Auction #2: Troy Tooling, Inc.



1988  
NEWMAN 250-TON CAPACITY 4-POST HYDRAULIC  
DOWN ACTING DIE TRYOUT PRESS



1987  
NEWMAN 150-T CAPACITY  
4-POST SLIDING BOLSTER  
HYDRAULIC DIE TRY OUT PRESS



DAKE 25-TON CAPACITY  
HYDRAULIC SPOTTING PRESS



CINCINNATI - GILBERT 5" BAR  
HORIZONTAL TABLE TYPE BORING MILL



BRIDGEPORT SERIES I, 2-H.P.  
VERTICAL MILLING MACHINES



KAO-MING RADIAL ARM DRILL

### (4) HYDRAULIC DIE 4-POST TRYOUT PRESSES

- 1- 1988 NEWMAN 250-TON CAPACITY 4-POST, SLIDING BOLSTER HYDRAULIC DIE TRY OUT PRESS, MDL. HP-188-SP, s/n 6118-HA, Down Acting, 88" X 112" Bed Area, Tapped Bed & RAM, Motorized Sliding Bolster, 100" Travel, 72" Day Light, 48" Stroke, Top Mounted Hydraulic System, 6" Tie Bars, (2) 12" Diameter Main Cylinders, 3,000-PSI, Ratchet Safety, Motors & Controls.
- 2- 1985 & 1987 NEWMAN 150-TON CAPACITY 4-POST HYDRAULIC DOWN ACTING DIE TRYOUT PRESSES, MDL. HP-188, 72" X 102" Tapped Bed & RAM, 102" Daylight, 72" Stroke, 3" Die Tie Bars, 15 HP Top Mounted Hydraulics, Transformer, Hydraulics, Motors & Controls.
- 1- 1980 DAKE 25-TON CAPACITY HYDRAULIC SPOTTING PRESS, MDL. 918566, s/n 179409, Floor Standing, Down Acting, Tapped RAM & Bed, 3" Die Tie Bars, 3 5/8" Diameter Cylinder, 35" X 55" Overall Bed Area, 48" Day Light, Top Mounted Hydraulics, Level Controls, Hydraulics, Motors & Controls.

### ELECTRICAL DISCHARGE MACHINE

- 1- PLANER MILL CONVERSION SINKER TYPE ELECTRICAL DISCHARGE MACHINE, 50" X 144" Table Size, Swivel Tilt Ram Head, ERM Mdl. HP-120, 120-Amp Electrical Discharge Machine Power Supply, s/n 467, Sokki 3-Axis Digital Readout, Motors & Controls.

### BORING MILLS

- 1- CINCINNATI-GILBERT 5" BAR HORIZONTAL TABLE TYPE BORING MILL, s/n 270, 48" X 144" T-Slotted Table, 4-Way Bed, 96" Vertical, Way Covers, Hard Ways, Triple Ways, One Shot Lubrication System, 10 To 1,000-RPM, Threads & Feeds, Cab Rider Station, Pendant Controller, Lubrication System, 3-Axis Digital Readout System, Motors & Controls.
- 1- NOMURA HORIZONTAL BORING MILLING & DRILLING MACHINE MDL. B-100BT-2, s/n 3622, 4" Spindle Bar, 21 To 1,200-RPM Spindle Speed Range- 44" X 52" Built In Rotary Table, Self Contained Hydraulic Unit, Transformer, Anilam CNC System (Not In Service), 2-Way w/2 Outboard Supports.

### (11) VERTICAL MILLS

- 1- BRIDGEPORT SERIES II, 2-HP VERTICAL MILLING MACHINE, s/n 6267, 12" X 59" X 4-Way Power Feed Table, 7" Riser, 4,200-RPM, 5" Quill Travel, Bijur One Shot Lubrication System, Motors & Controls, 2-Axis Digital Readout System.
- 6- BRIDGEPORT SERIES I, 2-HP VERTICAL MILLING MACHINES, s/n's 239972, 233596, 249770, 249618, 242522, 215183, 9" X 42" Table Size, 4,200-RPM, Bijur One Shot Lubrication System, 5" Quill Travel, (1) w/Digital Readout, (1) w/48" Table, Motors & Controls.
- 4- BRIDGEPORT 1-HP VERTICAL MILLING MACHINES, s/n 187419, 215089, 165264, 214911, 9" X 48" Table Size, Bijur One Shot Lubrication System, 2,720-RPM, 5" Quill Travel, Motors & Controls.

### (3) LATHES

- 1- 1984 OSAMA SR 17" X 60" C.C. GAP QUICK CHANGE GEARED HEAD ENGINE LATHE, MDL. SJX 1760G, s/n 840729, Power Feed Saddles, 2,000-RPM, Chip Pan Bed, Coolant System, Motors & Controls.
- 1- CHINA MADE 15" X 42" C.C. GAP QUICK CHANGE GEARED HEAD LATHE, MDL. C6232E-1, s/n 90356, Power Feed Saddle, Thread Chasing Dial, Stops, 1,800-RPM, 2" Hole, Coolant System, Light, Chip Pan Bed, Motors & Controls.
- 1- DASHIN-PRINCE 13" X 30" C.C. QUICK CHANGE GEARED HEAD LATHE, s/n 3089, 1,800-RPM, Power Feed Saddle, Thread Chasing Dial, 2-HP Motor, Stops, Threads & Feeds, Motors & Controls.

### (8) DRILLS

GIDDINGS & LEWIS CINCINNATI BICKFORD RADIAL DRILL, s/n 6NE96, 7" X 19" Column, 12 To 1,500-RPM, 50" X 94" Rectangular Base Table, Power Elevation, Coolant System, Motors & Controls • AMERICAN RADIAL DRILL, s/n 7808X, 8" X 19" Column, 62 To 1,600-RPM Spindle Speed Range, L-Shaped Base, Coolant System, Motors & Controls • 20" TAIWAN PEDESTAL TYPE DRILL PRESS MDL. RDM-270F, s/n 9148, Hand Feed Quill, 1-HP, Motors & Controls • 2000 26" SOLBERGA FIXED HEAD DRILL PRESS MDL. SE2035, s/n 346633, Power Feed

Quill, Motors & Controls • 1992 20" POWERMATIC CAPACITY PEDESTAL TYPE DRILL PRESS MDL. 1200, s/n 9220V220, Hand Feed Quill, Motors & Controls • 18" ROYAL/CANEDY-OTTO PEDESTAL TYPE DRILL PRESS, s/n 18-A-6477, Motors & Controls • 1984 KAO-MING RADIAL ARM DRILL MDL. KMR-980S, 9" Column X 3' 6" Arm, s/n 1829, Power Elevation, Clamp, 1,524-RPM, 27" X 42" T-Slotted Base Table, Box Table, Motors & Controls • WESTHOFF BENCH TOP PRECISION DRILL, s/n WM100-1-94126.

### (7) GRINDERS

K.O. LEE 6" X 18" CAPACITY HAND FEED SURFACE GRINDER, MDL. J618, s/n B4282, 6" X 18" Chuck, One Shot Lubrication System, 1-HP Spindle, Light, Enco Dust Collector, Motors & Controls • HARIG 6" X 18" CAPACITY HAND FEED SURFACE GRINDER, MDL. 618W, s/n 3906M, 6" X 18" Electrical Magnetic Chuck, 1-HP Spindle, Walker Chuck Controller, Lubrication System, Motors & Controls • 1987 KBC TOOL & CUTTER GRINDER, MDL. MB-450A, s/n 3181, Hyper Tool Mdl. L, Universal Gundrill, Sharpening Fixture, s/n 072298 • LANDIS HAND FEED SURFACE GRINDER, MDL. 618, s/n 132-1, 6" X 18" Permanent Magnetic Chuck, Lubrication System, Motors & Controls • (2) 1981 DECKEL MDL. SO, SINGLE LIP TOOL & CUTTER GRINDERS, s/n 81-20701 & SO-3723, Motors & Controls • OLIVER MDL. 600, DRILL POINT GRINDER, s/n G8534.

### Ovens

- 1- 2001 JENSEN BATCH OVEN MDL. 7012, s/n 7012, 4.5-Min Purge, 1.5-Mil Btu Per Hour, Natural Gas, PLC Controllers, 2-Door Pass Through, Exhaust, Filters, Oven Inside Dim 25' L x 8' W x 5' 9" H.
- 1- 1987 ADVANCED GAS FIRED 2-DOOR OVEN MDL. 6-61010-350-SA, s/n 87-0348, Advanced Inside Dim 8' L x 8' W x 6' 8" H.

### SHOP EQUIPMENT

Securall Fireproof Cabinet, Oil-Lube Nesting Stations, Steel Shelving, Prospector PC Station, Snow Blower, Stencil Cutter, Lunch Room Equipment, Steel Racks, Carts, Benches, Table, Chairs, Fire Extinguisher, Parts, Supplies, Machine Tooling, Taps, Drills, Taper Shank Drills, Tool Holders, Quick Change Tooling, Height Gages, Drafting & Layout Table, Chairs, C-Clamps, Brooms, Wall Clock, Electric Cords, Supplies, File Cabinets, Levels, Cubes, Scribes, Balls, Supply Cabinet, Blue Print Copies, Calipers, Blocks, Hall Tree, Lunch Room Equipment, Steel Racks, Carts, Hand Truck, Benches, Time Rewinder, Dock Plate, Chains, Hose, Hand Tools, Tables, Hose, Fans, Pallet Shelving, Lights, Hand Pumps, Platform Scales, Dust Collectors, Miscellaneous Machine Parts, Lockers, 2-Drawer Supply Cabinets, Etc.

### (7) SAWS

(2) 1998 & 1986 W.F. WELLS HORIZONTAL METAL CUTTING BAND SAW MDL. W-9-1, s/n's W985273, 864239, 9" X 18" X 2-Post, Vise, Coolant, 0 To 300-Blade Feet Per Minute, Roller Conveyor, Motors & Controls • (2) 1986 & 1982 24" GROB VERTICAL CONTOUR METAL CUTTING BAND SAWS MDL. 48V - 24, s/n's 2562, 2140, 24" X 24" X 45" Tilt Table, Butt Weld & Grind Attachment, Motors & Controls • 20" ROCKWELL VERTICAL CONTOUR WOOD CUTTING BAND SAW • ABRASIVE CUT OFF SAW • 20" POWERMATIC VERTICAL CONTOUR METAL CUTTING BAND SAW MDL. 81, s/n 281042, No Butt Welder, Motors & Controls.



W.F. WELLS HORIZONTAL METAL CUTTING  
BAND SAW MDL. W-9-1



JENSEN BATCH OVEN MDL. 7012



## Auction #2: Troy Tooling, Inc.



MILLER SYNCROWAVE CC AC/DC ARC WELDER MDL. 350LX



VIEW OF FORK LIFTS



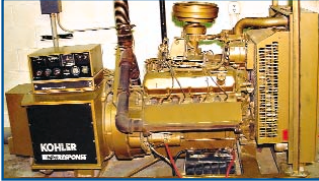
18" POWERMATIC PLANNER MDL. 180



KAESER SIGMA - PROFILE PACKAGED AIR COMPRESSOR MDL. SK25



16" MOAK SAW



KOHLER FAST RESPONSE BACK UP GENERATOR MDL. 100RZ72



CHEVROLET TANDEM AXLE FLAT BED STAKE TRUCK, MDL. C - 7500



12" BRIDGEWOOD TILTING ARBOR RIP TABLE SAW MDL. BW12 TAS

### (29) GRANITE & STEEL LAYOUT PLATES

(5) 72" X 120" STEEL LAYOUT PLATES • (13) 48" X 96" X 12" GRANITE SURFACE PLATES • 48" X 72" X 8" GRANITE SURFACE PLATES • 60" X 120" X 14" GRANITE SURFACE PLATE • (4) 48" X 24" X 3" GRANITE SURFACE PLATES • 48" X 24" X 5" GRANITE SURFACE PLATE • 48" X 72" X 8" GRANITE SURFACE PLATE • 72" X 144" X 12" GRANITE SURFACE PLATE • (2) 48" X 96" X 10" GRANITE SURFACE PLATES.

### WELDERS

MILLER SYNCROWAVE CC AC/DC ARC WELDER MDL. 350LX, s/n KK035624, Portable Cart, Guns, Cables & Leads • AIRCO 300-AMP ARC WELDER MDL. 3A-DDR-224HBA BD, s/n HG110330, Cart Radiator System, Guns, Cables & Leads • LINCOLN IDEALARC CV300, ARC WELDER, Portable, Guns, Cables & Leads.

### VEHICLE

1- 1997 CHEVROLET TANDEM AXLE FLAT BED STAKE TRUCK, MDL. C-7500, Vin 1GBM7H1J0VJ113844.

### (6) AIR COMPRESSORS

- 1- KAESER SINGMA PROFILE PACKAGED AIR COMPRESSOR MDL. SK26, Motors & Controls, Air Tank.
- 1- KAESER PACKAGED AIR DRYER MDL. KRD100, Motors & Controls.
- 1- KAESER SIGMA-PROFILE PACKAGED AIR COMPRESSOR MDL. SK25, Motors & Controls, Air Tank.
- 1- GARDNER DENVER 2-STAGE HORIZONTAL TANK MOUNTED AIR COMPRESSOR Approximately 20-HP "Y - Style", Motors & Controls.
- 1- PURE - AIR COMPRESSED AIR DRYER, Motors & Controls.
- 1- JOY TWISTAIR ROTARY SCREW PACKAGED AIR COMPRESSOR, s/n Z10809, 25-HP.
- 1- 1986 PIONEER REFRIGERATED AIR DRYER MDL. R100A, s/n 11063LP, Motors & Controls.
- 1- KOHLER FAST RESPONSE BACK UP GENERATOR MDL. 100RZ72, s/n 159732, Motors & Controls.

### EPOXY TOOLING/WOODWORKING DEPARTMENT

1984 KINDT COLLINS VERTICAL DETAIL SANDER MDL. 2SP, s/n 1375 • (4) 24" STATE DISC SANDERS MDL. D24, s/n's 203, 3137, 649, H2652 • 24" KINDT COLLINS #R, MASTER DISC SANDER, s/n 5634 • 16" MOAK JOINTER, s/n 8038 • 14" DELTA MILWAUKEE MULTIPLEX 40-B, RADIAL ARM SAW • 20" ROCKWELL VERTICAL CONTOUR WOOD CUTTING BAND SAW, s/n 84J89150 • CUSTOM FABRICATED & DESIGNED OVERARM ROUTER UNIT, 48" X 96" Granite Surface Plate • 12" BRIDGEWOOD TILTING ARBOR RIP TABLE SAW MDL. BW12 TAS, s/n 732343, (2) Cast Iron Extension Wings, Ripfence • (4) BALDOR BENCH TYPE DOUBLE END GRINDERS • 1984 18" POWERMATIC PLANNER MDL. 180, s/n 8480226 • SAFETY SPEED SHEET BOARD CUTTER MDL. H5, s/n L84 • (2) 36" MOAK VERTICAL CONTOUR WOOD CUTTING BAND SAWS, s/n's 8042, 10288, Motors & Controls • ROOF MOUNTED CETRALIZED DUST COLLECTOR • 24" STATE HORIZONTAL DISC PEDESTAL TYPE SANDER MDL. D24, s/n 735, Enco Dust Collector System, Motors & Controls.

### MATERIAL HANDLING

- 1- 1999 CATERPILLAR LP GAS FORK LIFT TRUCK MDL. GC55K, s/n AT8800335, 12,000 LB, Overhead Guard, Solid Tires, Side Shift.
- 1- #4 YALE APPROXIMATELY LP GAS FORK LIFT TRUCK, 20,000 LB Capacity, Hard Tires, Dual Front Tires, Overhead Guard, Side Shift, 72" Forks, Motors & Controls.
- 1- TOYOTA LIFT LP GAS FORK LIFT TRUCK MDL. 42-4FGC25, s/n 404FGC25-16991, 5,000 LB Capacity X 180", Hard Tires, Overhead Guard, Side Shift, Forks, Motors & Controls.
- 1- CLARK LIFT LP GAS FORK LIFT TRUCK MDL. C500Y-30, s/n Y234-222-4485, 3,000 LB Capacity X 130"- Column Shift- Hard Tires, Overhead Guard, Forks, Motors & Controls.
- 1- FACTORY CAT ELECTRIC WALK BEHIND FLOOR CLEANING MACHINE MDL. 34, 34" Wide, Motors & Controls.
- 1- PORTABLE GOOSE NECK BARREL LIFTING CRANE SYSTEM.
- 1- WESCO FORK LIFT TRUCK BARREL LIFTING ATTACHMENT.
- 1- CLARK LP GAS FORK LIFT TRUCK MDL. C300-40, s/n 356-160-5145, 4,000 LB.

### OFFICE EQUIPMENT & FURNITURE

Partitional Furniture, Layout Tables, Carpet Runners, Lateral File Cabinets, Assorted Chairs, Office Supplies, Trash Baskets, Letter Trays, Hall Tree, Production Board, Tables, Light, Bookcases, Desks, Chairs, Counter, Stapler, Hole Punch, Radio, Cork Board, Wall Clock, Plastic Floor Pads, Pictures, Vertical File, Coffee Maker, Refrigerator, Plants, Fans, Heaters, Kitchen Supplies, Credenza, Desks, Chairs, File Cabinet, Cabinets, Tables, Partitions, Personal Computers, Sharp Copy Machine, Printers, Typewriters, Fax Machine, Canon Copy Machine, Shredder, Cad Cam Systems, Plotters, Note Books, Network System, Television, VCRs & More.

### MISCELLANEOUS EQUIPMENT

DUSTKOP APPROXIMATELY 5-HP INDEPENDANT FREE STANDING 3-STAGE BAG HOUSE DUST COLLECTOR SYSTEM • TORIT MDL. PT1000, PORTABLE FUME COLLECTOR, s/n IG323582 • AGET DUSTKOP DUST COLLECTION SYSTEM • (2) FREE STANDING DRY FILTER TYPE PAINT SPRAY BOOTHS • ECONLINE SAND BLAST CABINET, MDL. RA48-2, s/n E87-4499 • JESCO DISPENSING PUMP SYSTEM • 12" DOUBLE END PEDESTAL TYPE GRINDER, Motors & Controls • 8" X 3/4" HP DAYTON DOUBLE END PEDESTAL TYPE GRINDER, Motors & Controls • 6" X 1/2-HP BALDOR DOUBLE END BENCH TYPE GRINDER, MDL. 712, s/n W1184, Motors & Controls • 6" DAYTON DOUBLE END PEDESTAL TYPE GRINDER, Motors & Controls • PARKER HYDRAULIC CRIMPING STATION • DEWALT CUT OFF SAW • RACINE PORTABLE SELF CONTAINED HYDRAULIC UNIT SYSTEM.

## INDUSTRIAL REAL ESTATE FOR SALE

### 1842 ROCHESTER INDUSTRIAL DRIVE, ROCHESTER HILLS, MI

Mold/Fixture Building: 45, 257 sq. ft., 2,562 sq. ft. of Office Area, 100% HVAC, Heavy Power, Airlines, Buss Duct, 19'-24' Clear; 5 Cranes from 3 to 30 Tons, 56 Car Parking Spaces, 2 Drive-In Truck Doors.

### 1890 ROCHESTER INDUSTRIAL DRIVE, ROCHESTER HILLS, MI

RIM Building: 23,248 sq. ft. , 2,068 sq. ft. Office & 4, 588 sq. ft. Engineering Room, 100% HVAC, Heavy Power, Airlines, Buss Duct, 19' Clear, Crane Rails, No Crane, 55 Car Parking Spaces, 1 Drive-In Truck Door, 1 Loading Dock.

The Buildings are Located on a Total of 7.76 Acres that Includes 3.7 Acres Vacant Land.

**Sold as Package or Separately with Land Split Between Buildings**

If Interested, Please Contact Daniel Labes of Grubb & Ellis Co. at 248-766-6578.

# auctioneers • liquidators • appraisers



11426 Ventura Blvd.  
Second Floor  
Studio City, CA 91604

Asa Marshall, Auctioneer  
KY Auctioneer Lic. #RP07050

**Thinking of having an auction?**

**Need an appraisal?**

**Know of a facility closure?**

**Call: 818.508.7034, Ext. 12**

**Email: [info@biditup.com](mailto:info@biditup.com)**

FIRST CLASS PRE-  
SORT MAIL U.S.  
POSTAGE  
**PAID**  
PERMIT NO. 32365  
LOS ANGELES, CA

biditup! live on-site

## auctions

**Auction #1:** Tues., July 15 • 10:30am  
2651 Palumbo Drive, Lexington, KY

**LINK-BELT CONSTRUCTION  
COMPANY, L.P., LLLP**

**Auction #2:** Wed., July 16 • 10:30am  
1842 & 1890 Rochester Industrial Dr., Rochester Hills, MI

**TROY TOOLING, INC.**

### Upcoming Auctions

#### TUESDAY, JULY 1

**FORMER MANUFACTURER OF AIRCRAFT TURBINES  
(NAME WITHHELD BY REQUEST)**

Valencia, CA

#### WEDNESDAY & THURSDAY, AUGUST 6 & 7

**Assets No Longer Required in the Continuing Operations of:**

**INTEGRATED MICROMACHINES, INC.**

Manufacturer of Optical Telecommunications Consisting of:

Optical Testing, Measurement, Precision Alignment & MEMS Fabricating Equipment  
Monrovia, CA

#### TUESDAY, AUGUST 19

**Equipment No Longer Required in the On-Going Operations of a Major Screw Machine Company**

Multiple Spindle & 2nd Operation Screw Machine Facility,  
Specializing in the Manufacturing of Fire Extinguisher Components  
Scotch Plains, NJ

[www.biditup.com](http://www.biditup.com) • email: [info@biditup.com](mailto:info@biditup.com) • Phone: 818.508.7034 • Fax: 818.508.3025