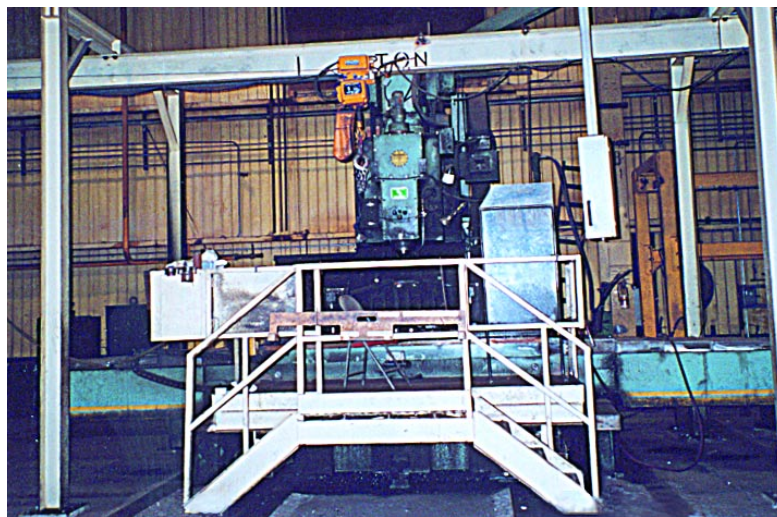




AUCTION

PLANT CLOSED • EVERYTHING SELLS

DOMINION CASTINGS LIMITED FOUNDRY EQUIPMENT/MACHINING FACILITY



**10:30 AM
THURSDAY
JUNE 27TH**

**INSPECTION: WEDNESDAY, JUNE 26TH
9 AM-4 PM & MORNING OF SALE**

**DOMINION CASTINGS LIMITED
100 DEPEW ST.
HAMILTON, ONT., CANADA**

US FUNDS

Sale Conducted By:

biditup

AN INDUSTRIAL ASSETS, INC. COMPANY

11426 Ventura Blvd.
Studio City, CA
P: 818.508.7034
F: 818.508.3025
www.biditup.net
email: info@biditup.net

Sale In Conjunction with:

LES ENCANTEURS
MGM MARTIN
INC
AUCTIONEERS

8600 Chemin Darnley Rd.
Montreal, Quebec, Canada
P: 514.990.6202
F: 514.990.6203

email: mgmartinauctioneers@qc.aibn.com

MELTING

1996 **LECTROMELT** 40-T Arc Melting Furnace w/Mdl. 1277-EPCP Controls, 18,000 KVA Power Transformer, 40 HP Hydraulic System, All Water Cooled, 12,470 Volt Primary, Joslyn Switch, Etc.

(2) **LECTROMELT** 10-T ARC Melting Furnaces Side Loading w/7500 & 4000 KW Power Transformers, 25 Cycle, 10" Electrodes, Sater Cooled Slag Door, Roof Ring, Shell, Holders, Switchgear w/ Joslyn Switch, Common Loading Car, Each w/ ELECTRONITE DT-400 Temperature Indicators.

(8) 30-T, 50-T & 1-T Nongear Bottom Pour Ladles & Bails.

Self Propelled Scrap Transfer Car 6' X 10' w/**WEIGHTRONIX** Digital Scale Mdl. WI-130 10,000# Cap.

Misc. To Include Spare Roof Rings, Brick Saw, Cement Mixer, Slag Pots, Caddy Lifts, Crane Boxes, Alloy Bins & Scales, Induction Furnaces NIS, Side Frame, Bolster, & Round Flasks, & Bottom Plates, Etc.

BLACKSMITH & FORGING

Including: Tables, Vises, Anvils, Forge Ovens, Small Double End Grinders & Cutoffs, Hydraulic Forge Hammer w/12" Throat, 5" Ram, **DEMOR** Forge Hammer, **KASTO** Power Hack Saw s/n 2504 24" Blade, **GRIEVE** Mdl. AB1250 Oven s/n 45113 24 KW, 1250 Degree, (2) **CECO** 24" Air Operated Forge Hammers, **LUCAS** 50-T Shop Press s/n 50-33-9 w/**ENERPAC** Hydraulic System, 6" Pinch Rolls, Misc. Tools, 5-T 20'

CORE ROOM

Sand Hopper w/Support Structure & Truck Feed, Sand Muller w/Weigh Batch Hopper, **AISCO** 4" Sand Transporter s/n 82-112, **C E CAST** Mdl. ECH 600 & ECH 1000 Sand Heaters, **C E CAST** Mdl. ARCEL 1000 Articulating Continuous Sand Mixer w/Oxide Feeder & Pumps, **C E CAST** Mdl. ARCEL 600 Continuous Sand Mixer w/Pumps, Approx. 80'-36 Roller Conveyor, Setup Tables, Bottom Plates, Wash Tanks & Mixers & Pumps, 6" Core Rod Shear, Etc.

Sand Hopper w/Support Structure, **C E CAST** Mdl. ECH1000 120 KW Sand Heater, **C E CAST** Mdl. CEL 600 Continuous Sand Mixer, **C E CAST** Mdl. ECH300 Sand Heater.

CLEVELAND C Frame Type Core Rollover 4000# Cap., (8) Station **CLEVELAND** Turntable w/ Hydraulic System & Controls, **C E CAST** Mdl. ECH 1000 & ECH 600 Sand Heaters, **C E CAST** Mdl. CEL 600 & CEL 300 Continuous Sand Mixers w/Pumps, Binder & Catalysts Tanks, Sand Hoppers w/ Support Structure, (2) 360' Floor Jibs w/1-T Air Hoist, Monorail System w/1-T Air Hoist.

Sand Hopper w/Support Structure, **C E CAST** Mdl. ECH300 60 KW Sand Heater, **C E CAST** Mdl. CEL 300 & CEL 100 Continuous Mixers w/Pumps, Binder & Catalyst Tanks, 24" Powered Roller Conveyor Loop w/Chain Transfers, SO₂ Gassing Station, Dependable Mdl. DMFV.1S Gas Generator, Air Operated Core Rollover, Approx. 30'-24" Roller Conveyor.

REDFORD Mdl. CB-12RA Shell Core Machine s/n 777-105 w/PLC Controls.

REDFORD Mdl. HS-26 SA Shell Core Machine w/Mandrell & Hydraulic System & Controls.

B & P Mdl. CB5 Core Blower w/Clamps.

Approx. 50-T Sand Silo w/Support Structure & Sand Transporter, (2) **C E CAST** Mdl. ECH 600 60 KW Sand Heaters, **PALMER** M50 Sand Mixer s/n M1580, **C E CAST** Mdl. CEL 300 Continuous Sand Mixer, Powered Roller Conveyor Loop 30" X Approx. 50' w/Chain Transfers, Hansburg Rollers, FECO Microwave Drying Oven, Approx. 60'-30" Roller Conveyor.

Surge Hopper w/Support Structure, **C E CAST** Mdl. ECH300 45 KW Sand Heater, **C E CAST** Mdl. ECH600 Sand Heater, **C E CAST** Mdl. CEL300 Continuous Sand Mixer w/**PALMER** Oxide Feeder, Powered Roller Conveyor Loop 30" X Approx. 50' w/Chain Transfers & Rollers.

REDFORD Mdl. CHS-22-RA Core Machine s/n 571-119 NIS.

(2) **HANSBURG** Mdl. H80 Core Shooters w/PLC Controls.

CARVER Mdl. 2CG S Blade Mixer w/Feed Hopper & 1250# Balancer.

MOLDING

Surge Hopper w/Support Structure & Feed System, Joist Roller Lift Table, Rollover, Transfers, 12" Stub Roller Conveyor, Twin 6' X 8' Shakeouts, 36" X Approx. 70' Belt Conveyor, 20" Magnetic Belt Conveyor, Return Bucket Elevators & Belt Conveyors, (6) Cell **SIMPSON** Sand Reclaimer w/75 HP Blower, Magnetic Separator, **SIMPSON** Mdl. 3 G Sand Muller & 3F Sand Muller Each w/Traveling Weigh Batch Hopper & Discharge Belts & Bucket Elevators, Related Sand Hoppers & Supports

HERMAN Molding Line To Include Return Sand Hoppers w/Support Structure, Bucket Elevators & Belt Conveyors, Fluidizing Bed Sand Cooler w/Blower, Sand Screen, Distribution Belts & Hoppers, (2) Cross Belt Magnetic Conveyors, 6' Diameter Live Bottom Feeder, (4) **SIMPSON** 4 Cell Reclaimers w/ 40HP Blowers, (3) **AISCO** Sand Transporters, (2) **SIMPSON** 3G Sand Mullers w/Traveling Weigh Batch Hoppers, (2) **HERMAN** 30 X 116 Molding Machines, Approx. 80 Sets Bolster Flasks, Related Rolling & Roll Out Conveyors.

B & P SLINGER Molding Floor To Include **HEWITT ROBINS** 6' X 8' Shakeout w/Exhaust System, Related Discharge Belt Conveyors, Bucket Elevators, Cross Belt Conveyor, **SIMPLEX** Screen, Sand Hoppers w/Support Structures, (4) Cell **SIMPSON** Reclaimer, (2) **SIMPSON** 3G Sand Mullers w/Traveling Batch Hopper, Discharge Belts, Bucket Elevators, & Slinger Hoppers, Double 6' X 8' Shakeout w/Exhaust System, 36" X 40' Apron Feeder, Magnetic Belt Conveyor, Shaw Box 3-T Hoist w/Monorail, Facing Sand Hopper w/6' Diameter Live Bottom Feeder, (3) Motorized Mobile Sand Slingers w/Hydraulic Systems, & Spare Hoppers, **C E CAST** Mdl. CEL300 Continuous Sand Mixer w/Sandmatic Sand Heater, Kloster 150 Lb. No Bake Continuous Mixer w/C E CAST ECH1000 Sand Heater, **PALMER** Pump System, 7-T Receiving Hopper w/Support Structure w/Sand Transporter.

FINISHING

PANGBORN 72 C.F. Tumbblast Cleaning Machine w/(2) 30 HP Shot Wheels, Shot System, Car Type Unloader & Loader, Dust Collection System.

WHEELABRATOR Mdl. 14 C.F. Tumbblast Cleaning Machine s/n A116584 w/Shot System, **WHEELABRATOR** Shaker Type Dust Collector.

BLAST CLEANING SYSTEMS To Include 12' Diameter Self Propelled Rotary Car w/Room & (8) Shot Wheels, Shot System, Spinner Hanger System w/ Common Wheels, Dust Collection System.

AISCO Blast Cleaning Machine s/n 85-104-01 Spinner Hanger Type w/(3) 30 HP Shot Wheels, Shot System, Knockout Cabinet & Dust Collector.

Paint System To Include Overhead 678 Monorail Chain System w/Drive, Paint Booth w/Exhaust System & Gas Heaters, Recirculating.

HEAT TREATING

(2) Car Bottom Annealing Furnace Each w/12' X 25' Car w/Rack & Pinion, (6) Burners Per Side, Gas System w/Blowers, L/N Controls, **HONEYWELL** Digital Controls.

(2) Car Bottom Annealing Furnace Each w/10' X 25' Car w/Rack & Pinion, (7) Burners Per Side, Gas System w/Blowers, & Controls,

(2) Car Bottom Furnaces Each w/4' X 10' Rack & Pinion Car, (4) Burners Per Side, Gas System w/Blowers, **HONEYWELL** Chart Recorders & Flame Guard, (2) Quench Pits w/Pumps & Recirculating.

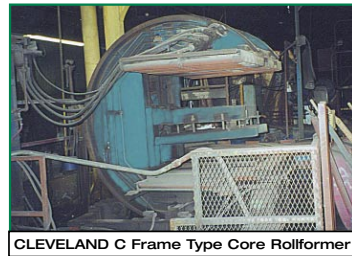
Car Bottom Heat Treat Furnace w/2-8' X 25' Cars, Double Door Furnace w/(7) Burners Per Side, 3 Zones, Gas System w/Blower & Controls.

Roller Hearth Furnace Double Door w/Double 36" Rollers Approx. 30' Long, Gas System w/Blower & Controls.

GRIEVE Mdl. AB-350 Box Oven s/n 3505044 1 2 KW, 440'.

MILLER Mdl. CP-CC 1500P Welding Power Supply w/**HOBART** 27 Wire Feeder • Arc Air Booth w/**MILLER** 1500 Amp Power Source & Traveling Exhaust Hood • Arc Air Booth w/Exhaust & Table, **MILLER** 1500 Amp Power Supply & Floor Jib w/(1)-T Air Hoist • (2) Arc Air Booths w/Exhaust System & Each w/10' X 8' Self Propelled Steel Transfer Car • Arc Air Booths w/6' X 10' Car w/Winch & Monorail System w/3-T Electric Hoist w/Pendent Controls • **MILLER** Mdl. SRS1000P Welding Power Supply s/n JA370293 • (2) **HOBART** Mega-Mig 650 RVS Welder w/Wire Feeder, s/n 87W510071, 79WS05360. • (5) **HOBART** Megafux 650 Welders w/Wire

Feeders, s/n 62WS02799. • (2) **HOI** w/Wire Feeder, s/n 24RT-4278, 2. • **IDEALARC** DC-600 Welders s/n AC Wire Feeders • (2) **MILLER** Mdl. SR1 CF12388 • **CANEX** Mdl. C-SRH555 W, SRH555 Welder s/n C074959 • (2) **H** Welder w/RED-E-ARC Wire Feeder • Feeder • **HOBART** Mdl. TR-300H **HOBART** MEGAMIG 650 Welder s/n **HOBART** Megaweld 450 Welder



CLEVELAND C Frame Type Core Rollformer



Car Bottom



HANSBURG Core Shooter, Mdl. H80



100 Lb. No Bake Mixer



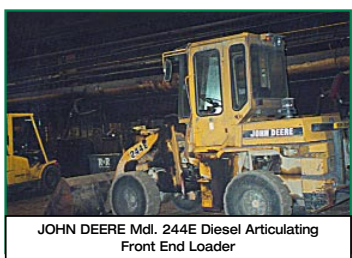
WHEELABRATOR Cu. Ft. Tumb



600 Lb. No Bake Mixer



NEW WHEELABRATOR Jet Dust



JOHN DEERE Mdl. 244E Diesel Articulating Front End Loader



CLARK 8,000



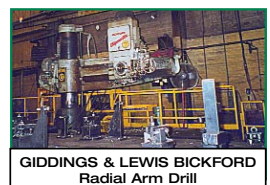
STANKO CNC Vertical Mill, Mdl. 65A90-11



LECO CS46 Carbon Sulfur Determinator



Air Tools & Right Angle Grinders

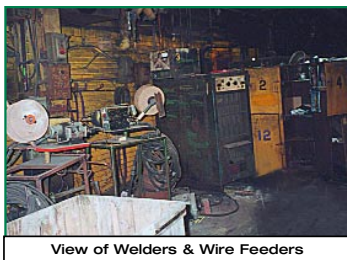


GIDDINGS & LEWIS BICKFORD Radial Arm Drill

WELDING



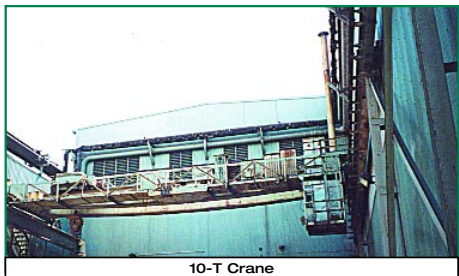
14 TOR Blast Furnace



View of Welders & Wire Feeders



TOR 14 blast



10-T Crane



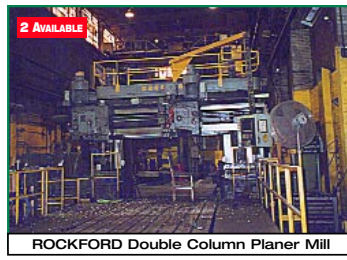
OR 80,000 CFM Pulse Collector



ATLAS COPCO Air Compressor



3000 Lb. Forklift



ROCKFORD Double Column Planer Mill



Sand Lab Equipment

**THINKING OF HAVING AN AUCTION?
NEED AN APPRAISAL?
KNOW OF A PLANT CLOSURE?
CALL: (818) 508-7034 EXT. 12**

AIR COMPRESSORS

(4) **ATLAS COPCO** Mdl. OT-1500 300HP Screw Type Air Compressors • **ATLAS COPCO** Mdl. GAU709 100HP Screw Type Air Compressor • (2) **GREAT LAKES** 1500 CFM Air Dryers.

CRANES & HOISTS

65-T **DOMINION** • 50-T **WHEMCO** • 40-T **SECORD** • 40-T **SHAWBOX** • 35-T **CRANE ENGINEERING** w/ Radio Controls • 30-T **MILWAUKEE** • 30-T **MILE** • 30-T **P&H** • 20-T **DOMINION TON** • 20-T **CLEVELAND** • 20-T **HAMILTON** • 15-T **DOFASCO** • 15-T **DOMINION** • 15-T **CLEVELAND** • (4) 10-T **PROVINCIAL** • 10-T **DOMINION** • 10-T **SHAWBOX** • 10-T **HEPBURN** • 7.5-T **SHEPHERD NILES** • (3) 3-T **PROVIDENCE** • 360' Floor Jib w/2500# Electric Hoist w/Pendent Controls • 45' x 10' I Beam Hoist System w/ 2 x 2-T CM Electric Hoists • 45' x 8' I Beam Hoist System w/ 1-T **KITO CORP** Electric Hoist • 45' x 10' I Beam Hoist System w/ (2) **KITO CORP** 1-T Electric Hoists • Span Bridge Crane w/5-T 3-Way Pendent Hoist & 100' Runway • **WALL ND** Floor Jibs & Hoists • Misc. Wall Jibs & Hoists, Crane Buckets, Etc. • (2) 48" Crane Magnets • (3) **NEC** 54" Crane Magnet s/n C57712,C55644,C57751 • 360' Floor Jib w/2-T Air Hoist.

DUST COLLECTORS

Including: 75,000 CFM 3 Compartment Shaker, 60,000 CFM 6 Compartment Shaker, (2) 5,000 CFM 2 Compartment Shaker, (2) 54,000 CFM 4 Compartment Shaker, 22,000 CFM 2 Compartment Shaker, 5000 CFM **WHEELABRATOR** Pulse, **HARTZELL** 300HP Furnace Dust Collector, **NEW WHEELABRATOR** 80,000 CFM 300HP Pulse Sand System Dust Collector.

FORKLIFTS

CLARK Mdl. C500-S80 8000Lb. L/P Fork Lift Truck s/n 685-0182-6655 • **DAEWOO** Mdl. D35S 8000# Diesel Fork Lift Truck s/n 2100783 • **DAEWOO** Mdl. D25S 5000# L/P Fork Lift Truck s/n 1204493 w/Side Shift • **JOHN DEERE** Mdl. 244E Diesel Articulating Front End Loader.

CNC VERTICAL MILL

(2) **STANKO CNC**, Mdl. 65A90-11, 108 x 41 Table, 32" Spindle to Table, C/W: HEIDENHAIR CNC Controller & Hand Control, Lubrication System, Hydraulic Power Packs, Transformers & Electrical Power, s/n 18 & 19.

PLANER MILLS

ROCKFORD Double Column Planer Mill w/Vertical Head & Universal Head, 24' x 8' Table, 106" Between Columns, 67" Column Vertical Height, Vertical Spindle Speed 27-618 RPM, Universal Spindle Speed 27-618 RPM & Ram Indexing, (2) Horizontal Spindles 37-618 RPM, C/W: **SIEMENS SINUMERIK** CNC Controller w/Hand Control, (2) **MAYFRAN** Chip Conveyor s/n's C970-608 & C970-610, Lubrication & Coolant Systems, 480V/3/60 & 600V REX Manufacturing Transformer.

ROCKFORD Double Column Planer Mill w/(2) Vertical Heads, (2) Horizontal Spindles, 24' x 8' Table, 106" Between Columns, 72" Vertical Height, 618 RPM Vertical Spindle Speed, 618 RPM Horizontal Spindle Speed, C/W: **SIEMENS SINUMERIK** CNC Control w/Hand Control, Coolant & Lubrication System, 480V/3/60 & 600V REX Manufacturing Transformer.

INGERSOLL Double Column Bridge Planer Mill w/(2) Universal Vertical Heads, (2) Horizontal Spindles, 21' x 8' Table, 126" Between Columns, 120" Bridge Height, C/W: Pendant Control, Hydraulic Horizontal Drives, Lubricator System & Coolant, Dual Ram Indexing (Vertical) 550 V/3/60

INGERSOLL Double Column Bridge Planer Mill w/Vertical Spindle, Horizontal Spindle & Ram Indexing, 23' x 88" Table, (2) Horizontal Spindles, 104" Between Columns, 60" Vertical Height, C/W: Pendant Control, Coolant & Lubrication Systems 575V/3/60.

SAND & MET LABS

BART Mdl. RCC-610 Welder '4RT-5186. • (2) **LINCOLN** C469347, 214139 w/HOBART H555 Welders s/n CP100868, (elder) • Portable **CANEX** Mdl. **IOBART** Mega Flex 450 RVS • **HOBART** Welder w/Wire 'F Welder s/n 91WS12801 • 79WS05360 w/Wire Feeder •

(2) Lab Mullers, **LIGHTNING** Mixer, Scale, **DIETERT** Varitemp Oven, **THERMOLYNE** F-A1730 Furnace s/n 85-5744, (2) **ROTAPS** w/Screens, (3) 315 Sand Rammers, (2) 405 Sand Strength Machines w/610 Attachments, (3) **MB** Clay Testers w/Stirs, **BLUE M** Oven, **BRANSON** Ultrasonic, (2) Coring Stirs, **Mettler** LJ16 Moisture Balance, (2) 276 Sand Moisture Tellers, Sand Dryer, **OHAUS** Digital Balance, Fume Hood, Split, Torsion Balance, (2) 12 Gang Boxes, Glassware, Etc.

Double End Grinder, **BUFFALO** Table Drill, 6" Belt Grinder, (2) Double End **LECO** DG-14 Grinders, **SWISHER** Grinder, **REIHLE** Cutoff Saw, **THERMOLYNE** 47900 Muffle Furnace, **ARL** Mdl. 3560 **AES** 18 Element Spectrometer s/n 5135 w/Computer, **ARL** 3560 **AES** Spectrometer s/n 964 w/APPLE Computer, Fume Hood, **LECO** CS46 Carbon Sulfur Determinator w/Furnace & Balance

RADIAL ARM DRILLS

CARLTON Radial Arm Drill w/ 10' Arm, Mdl. SA1981, 26" Column Diameter, 10-1000 RPM, 182" x 147" x 51" x 24" Table & Jig Set Up, C/W: Coolant System • **ARCHDALE** Radial Arm Drill w/10' Arm, 26" Column Diameter, 10' Column Height, 20' x 8' x 7" Table w/Set Up Jigs, 11-1450 RPM, C/W: Coolant System, Vertical & Horizontal Power Arm, s/n PD12834 • **GIDDINGS & LEWIS BICKFORD** Radial Arm Drill, 7' Arm, 14" Column Diameter, 8' Column Height, 14-1535 RPM, Coolant s/n 954-00200-75 • 1972 **ASQUITH-ARCHDALE** Radial Arm Drill, 6' Arm, 19" Column Diameter, 102" Column Height, 91-1560 RPM, C/W: Coolant System, s/n 32669 • **GIDDINGS & LEWIS-BICKFORD** 6' Traveling Radial Arm Drill, **CHIPMASTER** Mdl. 954-00132-66, 15" Column Diameter, 88" Column Height, 8-1000 RPM, 22' Travel, 20' x 8' x 4" Table on Steel Set Up Table w/ Set Up Jigs, C/W: Coolant System.

JIG MILL

DE Vlieg Jigmill HBM, Mdl. 4-B, 60" x 36" Table, 3" Spindle, 20-990 RPM, 0-20" Spindle Stroke, s/n 6-172.

HORIZONTAL FACING MACHINE

GISHOLT Double Spindle Horizontal Facing Machine Type 43 w/Pneumatic Clamping Table, C/W: Hydraulic System & Coolant Electric Panels, s/n 3603x3.

HYDRAULIC PRESS

MULTIPRESS C Frame Hydraulic Press, Mdl. LA35C51D46 Shuttling, 35-T Cap., 37 x 24 Bed, 15" Stroke, 24" Sp. Height, 18" Throat, 15HP Motor, 21 x 20 Shuttle Table, s/n 1831.

STRAIGHTENING PRESS

CMC Hydraulic Straightening Press, 500-T Cap., 144" Between Post, 98" Vertical Height, 24" Ram Diameter, 180 x 86 Traveling Table, 575V/3/60, s/n G-9210.

STEEL PLATES

Steel Floor Plate 20' x 8' x 9" w/(8) Steel Stands w/Set Up Jigs • Steel Floor Plate 20' x 8' x 11" on (10) Steel Stands w/Set Up Jigs • (2) Steel Floor Plate 17' x 8' x 10" on (8) Steel Stands w/Set Up Jigs • Steel Floor Plate 12' x 8' x 14" on Steel Stand w/Set Up Jigs • (2) Steel Plates 140" x 49" x 9 3/4" w/Set Up Jigs • (4) T-Slotted Floor Plates 84 1/2 x 24 1/4 x 24 1/2.

INSPECTION EQUIPMENT

1999 **FARO** Arm CMM Machine, Mdl. S-12-02 Portable, s/n 12029-700722, **PORTAGE** Layout Machine, Mdl. 60A w/4-Axis Digital Readout w/ (2) 50"x70" Layout Tables, s/n 77666R, **VARION** **LINITRON** 2 MEV Xray Machine Mdl. L-200 s/n 14 **KODAK** **INDUSTREX** M6-1 Film Processor w/Feed, **NUCLEAR ASSOCIATES** Type B IR100 **IRIDIUM** s/n 4695, Viewers, Densitometer, Ultrasonic, Penetrants, **TINIOUS OLSEN** Brinell Tester & (4) **KING** Portable Brinell Testers, (2) Measuring Table 20' x 10' x 12", (2) **MAGNAFLUX** Mdl. KRH-3 3000 Amp Particle Inspection Machines.

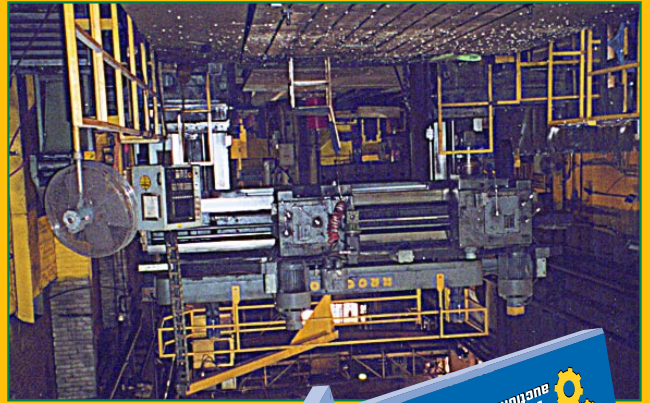
TRANSFER CARS

12' x 94" Motorized Track Mounted • 5' X 20' Self Propelled • 5' X 12' Self Propelled • 5' X 10' Self Propelled • 4' X 8' Self Propelled • (5) 5' X 6' Non Powered w/Tugger Rubber Tire Puller.

MISCELLANEOUS

Lots of **HICYLE** Grinders & Generators • **WEIGHTRONICS** Mdl. W-127 4' X 6' Digital Platform Scale 10,000# Cap. • (31) **ATLAS COPCO** 7" Straight & Right Angle Grinders • **PHILADELPHIA** Hydraulic Paper Baler s/n AD6157-22 • (2) Double 45 Gal. Oil Kribbs • Brick Saw, Wall Jibs w/Hoists, Portamuller, Core Racks, Caddy Lift, Self Dumping Hoppers, Fans, Setup Rails, Spare Muller Parts, Slinger Parts, Drill Table w/Wise, **HERMAN** Jolt Table, Breaker Ball, Spare Slinger Hoppers, Parts, Double End Grinders, Air Hoist, Shop Press, Welders, Drills, Tables, & Vises • Sand Rammers • Chippers • Torches • Arbor Press • Caddy Lifts • Self Dumping Hoppers • Desks, Chairs, Conference Tables, Computers, Printers & Much More!

PLANT CLOSED • EVERYTHING SELLS
DOMINION CASTINGS LIMITED
FOUNDRY EQUIPMENT
MACHINING FACILITY
100 DEPEW ST.
HAMILTON, ONT., CANADA
THURSDAY
JUNE 27TH
10:30 AM
9 AM-4 PM & MORNING OF SALE
INSPECTION: WEDNESDAY, JUNE 26TH



FIRST CLASS PRE-SORT
 MAIL U.S. POSTAGE
PAID
 PERMIT NO. 32365
 LOS ANGELES, CA

biditup
 11426 Ventura Blvd.
 Second Floor
 Studio City, CA 91604

NOTION



AUCTION



UPCOMING AUCTIONS

- #1** **Discontinued Operations of: McNALLY MANUFACTURING**
A Division of Metso Minerals Industries, Inc.
LARGE CAPACITY MULTI-MILLION MACHINE TOOL & FABRICATION FACILITY
June 13 • Pittsburg, KS
- #2** **LIGHT CONSTRUCTION, RENTAL YARD & INDUSTRIAL EQUIPMENT**
June 15 • Los Angeles, CA
- #3** **By Order of US Bankruptcy Court, Case #01-24328-BM:**
HASKELL SENATOR INTERNATIONAL, INC.
MFR. OF EXECUTIVE OFFICE FURNITURE, LATERAL FILES, FILE CABINETS;
FEATURING: STAMPING, ROLLFORMING • FABRICATING FACILITY
June 18 • Verona, PA
- #4** **MBCI & NCI**
STATE-OF-THE-ART PRE FAB METAL BUILDING/STUD & TRACK MANUFACTURER
June 20 • Houston, TX
- #5** **Surplus to Ongoing Operations of:**
KURT MANUFACTURING CO
LATE MODEL NEW BRITAIN SCREW MACHINES & CNC MACHINING FACILITY
June 26 • Coon Rapids, MN
- #6** **SECURITY PLASTICS, INC.**
TOOL & DIE MOLD MAKING FACILITY
July 10 • St. Petersburg, FL
- #7** **ONLINE AUCTION**
(4) VERNON WHEELON PRESSES
July 23 • www.biditup.net

DIRECTIONS:

From Buffalo: Take QEW East Towards Toronto/Hamilton. Exit On Burlington Avenue & Continue On The Overpass. 2nd Major Light (Depew) Turn Left & Cross Lights & Tracks. Plant Will Be On The Left Hand Side--100 Depew Street.

From Toronto: QEW West Towards Niagara/ Hamilton. Pass Over Hamilton Bridge & 2nd Exit Is Burlington Avenue. Exit On Burlington Avenue & Continue On the Overpass. 2nd Major Light (Depew) Turn Left And Cross Lights & Tracks. Plant Will Be On The Left Hand Side--100 Depew Street.

TERMS

Sale Conducted by: Industrial Assets, Inc. Subject to our customary terms of sale. (Available at the auction site on the day of the sale), and any and all amendments and modifications announced by the auctioneer at the time of the auction. The auctioneer and seller make no warranties or guarantees, expressed or implied, as to the defects in or the correctness or accuracy of the descriptions in any advertising of any item(s) being auctioned and will not be responsible for any advertising discrepancies or inaccuracies of any kind. All items sold will be on an "AS IS", "WHERE IS", and "WITH ALL FAULTS" basis "WITHOUT EXCEPTION" and "WITH REMOVAL AT BUYER'S RISK AND EXPENSE". AUCTIONEER AND SELLER MAKE NO WARRANTIES OR GUARANTEES OF ANY KIND, EXPRESSED OR IMPLIED AS TO THE NATURE, QUALITY, VALUE OR CONDITION OF THE ITEM(S) BEING AUCTIONED OR ITS SUITABILITY FOR ANY USE. AUCTIONEER AND SELLER EXPRESSLY AND SPECIFICALLY DISCLAIM WITHOUT LIMITATION ANY WARRANTY OF MERCHANTABILITY OR FITNESS FOR A PARTICULAR PURPOSE. AUCTIONEER SHALL NOT BE LIABLE FOR SPECIAL, CONSEQUENTIAL OR INCIDENTAL DAMAGES. It shall be the buyer's obligation to verify information and descriptions of property prior to sale. Industrial Assets, Inc., and its advertising agency assume no liability for errors or omissions in this brochure. The auctioneer does not warrant the age, accuracy, genuineness, authenticity, description, weight, count or measure of any listings specified herein. Although it is not likely, auction sales are subject to cancellation or postponement, and sometimes items are withdrawn from the sale, kindly contact Industrial Assets, Inc., prior to travel as there will be no reimbursements. On the day of the sale, all successful bidders must immediately pay the full purchase price in cash, certified funds, cashier's check, wire transfer or company check with a letter from the buyer's bank guaranteeing unqualified payments to Industrial Assets, Inc. Your letter should be similar to the following: [Mr. "Customer Name" is a customer of this bank. This bank will guarantee unqualified payment to Industrial Assets, Inc. on the account listed herein up to the amount of \$ _____. This letter is valid until 30 working days after the auction sale.] Company checks without letter from bank guaranteeing unqualified payment will not be accepted. The failure to make payment promptly shall be considered default and each lot or lots so purchased will be placed for resale. The buyer must pay the total invoice price for all the lots purchased before any removal can begin. All buyers must pay applicable sales tax (unless evidence of exemption is provided to auctioneer's satisfaction). Buyers are responsible for the transportation, associated costs and risks involved in the removal of purchased item(s). Certain items may contain residual chemicals and/or hazardous materials. The purchaser(s) hereby indemnify and hold harmless the auctioneer and seller from any and all damages, claims or liability from any injuries to persons or property of any type whatsoever caused during the sale of, during the removal, or during use or operation of the purchased item(s). If you are unable to attend, please contact us regarding placing a proxy bid. ALL ITEMS SUBJECT TO PRIOR SALE. PLEASE NOTE: All sales are subject to a 10% buyer's premium.