

AUCTION

Thursday, October 2nd, 2008

Beginning at 10:00am CDT

85 North Central Drive, O'Fallon, MO 63366

Preview: Wednesday, October 1, 2008, 9:00am to 4:00pm CDT



WEBCAST

Can't attend the auction in person?
Bid live online at www.BIDITUP.com

US Bankruptcy Court, Case #08-43324-399



Formerly of:
**ALBERS
MANUFACTURING
COMPANY, INC.**

LATE MODEL STATE OF THE ART CNC METALWORKING FACILITY MOST EQUIPMENT 2000 AND NEWER!



FINN POWER 33 Ton Laser/Punch Machine



ACCUPRESS 8' X 100 Ton Press Brake

- ▶ **FABRICATION**
- ▶ **WELDING**
- ▶ **MATERIAL HANDLING**
- ▶ **SUPPORT EQUIPMENT**
- ▶ **VEHICLES**
- ▶ **ELECTRICAL EQUIPMENT**
- ▶ **OFFICE EQUIPMENT**

FABRICATION

2004 FINN-POWER 33 TON CNC LASER/PUNCH MACHINE, M# LP-6SWC, S/N 1122-LP613004, Roffin 2500 Watt Laser, M# TR025, 60" x 144" Sheet Capacity, 21 Station Turret, Slug Conveyor, Extension Tables, W/ Beckhoff CNC Controller, S/N1122-LP613004 & Lumikko Chiller, M# FJ2760

1992 FINN-POWER 33 TON CNC TURRET PUNCH, M# TP2620-IF2/21/AM, S/N 73-26200492, 60" x 144" Sheet Capacity, Automatic Loader / Unloader, 21 Station Turret, Slug Conveyor, Extension Tables, w/Sinumerick System CNC Controller

1999 ACCUPRESS 12' X 175 TON PRESS BRAKE, M# 717512, ETS3000 CNC Controls, ACCUPRESS Back Gauge, S/N H5857

(2) 2005 ACCUPRESS 8' X 100 TON PRESS BRAKE, M# 71008, ETS CNC Controls, ACCUPRESS Back Gauge, S/N's 8323, 8324

WYSONG MILES 8' X 60 TON PRESS BRAKE, M# PH-6096, S/N HPB44-111, GC6000 CNC Controller

BANTAM 12 TON X 24" PNEUMATIC PRESS BRAKE, M# B212, S/N B9557

1999 EUROMAC 30 TON CNC PUNCH PRESS, M# CX1000/30, Euromac CNC Controls, S/N 3MM380906A, 6 Station

1997 GEKA 55 TON IRONWORKER, M# Hydracrop 55/A, S/N 10505

1993 STRIPPIT 20 TON TURRET PUNCH, M# FC1000R, S/N 229102793, 20 Station Turret

STRIPPIT 30 TON CNC PUNCH, M# Super AG 30/30, S/N 2198062988

UNIPUNCH CORNER NOTCHER, M# EHN260, S/N 444

BEWO 12" COLD SAW, M# CP0350LT, S/N 27590894

1995 CLEARING NIAGARA 10' X ¼" PLATE SHEAR, M# 1F 101/4II, S/N 035695, Niagara MPC2100 Controls

ALMCO VIBRATORY DE BURR MACHINE, M# M-238, S/N 018214

NEW FALLS EDGE DE BURR MACHINE, M# 121D-BUR-R, S/N 3463

(2) RAMCO 24" BELT SANDER, M# DW-25R, S/N 348A

HUNTON LIMITED PUNCH GRINDER, M# BG 790, S/N BLX1077M

STRIPPIT PUNCH GRINDER, M# 85010-000

LITTEL ROLLER STRAIGHTENER, M# 312, S/N 77601-69, .050" x 18" Capacity

Huge Selection of **TURRET PUNCH TOOLING**

WELDING

THERMAL ARC PLASMA CUTTER, M# PAK3XR, S/N A70350A183001

DI ACRO MANUAL TUBE BENDER, M# 2, S/N DB9746

OMARK STUD WELDER, M# CD-30A

DENVER 30 KVA SPOT WELDER, S/N FE266

LINCOLN MIG WELDER, M# K/694-1, Mini Spool, S/N K1694-1-10958

MILLER TIG WELDER, M# Syncrowave 350, S/N KA833887

MILLER MIG WELDER, M# Millermatic 250X, S/N KJ151450

MILLER MIG WELDER, M# Millermatic 250, S/N KG250501

MILLER MIG WELDER, M# Millermatic 300, S/N KJ103096

MILLER WELDING POWER SUPPLY, M# CP200, S/N JE760007, w/Miller S52A Wire Feeder

(2) ACORN PLATEN WELDING TABLE, 4' X 8'

LORS 50 KVA SPOT WELDER, M# 150AP-DV, S/N 1297-6497, Interlock Microprocesor Controls



FINN POWER 33 Ton Laser/Punch Machine



FINN POWER 33 Ton Turret Punch



ACCUPRESS 8' X 100 Ton Press Brake

**FABRICATION • WELDING • MATERIAL HANDLING • SUPPORT EQUIPMENT • VEHICLES
ELECTRICAL EQUIPMENT • OFFICE EQUIPMENT**



ACCUPRESS 12' X 175 Ton Press Brake



WYSONG MILES 8' X 60 Ton Press Brake



BANTAM 12 Ton X 24" Pneumatic Press Brake



EUROMAC 30 Ton CNC Punch Press



STRIPPIT 20 Ton Turret Punch



GEKA 55 Ton Ironworker



CLEARING NIAGARA 10' x 1/4" Plate Shear



STRIPPIT 30 Ton CNC Punch



UNIPUNCH Corner Notcher



NEW FALLS Edge Deburr Machine



RAMCO 24" Belt Sander



BEWO 12" Cold Saw



OMARK Stud Welder

Register at www.BIDITUP.com and receive auction updates via email



DENVER 30 KVA Spot Welder



LORS 50 KVA Spot Welder



ACORN PLATEN Welding Table



MILLER Tig Welder



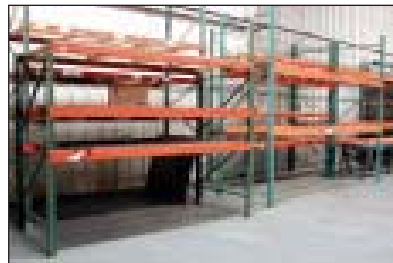
CATERPILLAR 10000 LB Forklift



ALLIS CHALMERS 4500 LB Electric Forklift



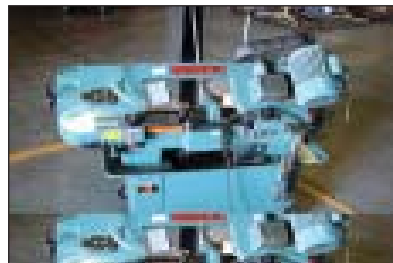
CALDWELL 5 Ton Sheet Lifter



Pallet Racking



GARDNER DENVER 20 HP Rotary Screw Air Compressor



KBC Horizontal Vertical Band Saw

MATERIAL HANDLING

CATERPILLAR 10,000 LB FORKLIFT, M# TC 100D, S/N 5KB02351, Propane, Side Shift, Triple Mast
 ALLIS CHALMERS 4500 LB ELECTRIC FORKLIFT, M# ACE50FEV, S/N DJK503209, 48 Volt, Side Shift
 CALDWELL 5 TON SHEET LIFTER
 PALLET JACKS
 PALLET RACK

SUPPORT EQUIPMENT

2006 GARDNER DENVER 20 HP ROTARY SCREW AIR COMPRESSOR, M# EBE99N Electra Saver II, S/N S233890
 (2) QUINCY 25 HP AIR COMPRESSORS
 DRILL PRESSES
 HAEGER 8 TON INSERTION PRESS, M# 824-8, 1993
 GRIZZLY 3 HP STROKE SANDER, M# G5394, S/N 002734
 MILFORD RIVETER, M# 310-3215, S/N 2852
 NATIONAL RIVET RIVETER, M# 1600, S/N 694
 TORIT DUST COLLECTOR, M# DFT2-4, S/N 1G557836-001
 BRIDGEPORT 9" X 42" VERTICAL MILL, S/N 40880
 KBC HORIZONTAL/VERTICAL BAND SAW
 DELTA 12" RADIAL ARM SAW
 RIDGID PIPE THREADER, M# 300, S/N 747033
 KENT WALK BEHIND POWER FLOOR SCRUBBER, M# KA262B, S/N 925000427

COUNTING SCALES

PLATFORM SCALES

Shop Carts, Scrap Bins, Heat Sealers, Chop Saws, Fans, Dollies, Ladders, Banding Carts, Pneumatic Tools, Rechargeables, Power Tools, Tape Machines, Air Compressors, Digital Scales, Tool Carts, Tool Boxes, Grinders

VEHICLES

1996 INTERNATIONAL BOX VAN, M# 4700 4x2, 254" W.B., 24' Box, w/MAXON Lift Gate, VIN 1HTSCAAM2VH435637
 1988 CHEVROLET 1500 PICKUP, VIN 1GCDC14H9JZ194507
 UTILITY TRAILERS

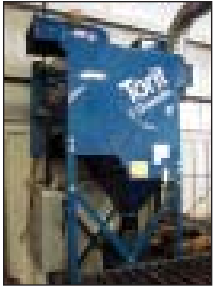
ELECTRICAL EQUIPMENT

EUBANKS WIRE STRIPPER CUTTER, M# 2700 Series IV, S/N 193-962
 AUTOMARK WIRE MARKING MACHINE, M# EMW3-40, S/N 5376
 HOUSTON INSTRUMENTS TERMINAL BLOCK MARKING SYSTEM
 ALLEN BRADLEY TERMINAL BLOCK MARKING SYSTEM, M# 1492PRTK1T110V-A
 NEW HERMES VANGUARD ENGRAVING PLOTTER, M# 3400
 TEST EQUIPMENT, MICRO-OHM TESTERS, HI-POT TESTERS, DRY FILM GAUGES, GRANITE SURFACE PLATES
 Large Selection of Electrical Components, including, Allen Bradley, Siemens, Emerson, Cooper B-Line, Rockwell Automation, Glastic, Panduit, Liquitite, Cutler-Hammer, Marathon, Baldor & A.O.Smith

OFFICE EQUIPMENT

Nice Selection of Late Model OFFICE FURNISHINGS, COMPUTER EQUIPMENT, SUPPLIES, CONFERENCE TABLES, ETC.

**FABRICATION • WELDING • MATERIAL HANDLING • SUPPORT EQUIPMENT • VEHICLES
ELECTRICAL EQUIPMENT • OFFICE EQUIPMENT**



TORIT Dust Collector



BRIDGEPORT Vert. Mill



HAEGER Insertion Press



RIDGID Pipe Threader



KENT Walk Behind Power Floor Scrubber



Material Inventory



Hand Tools



1996 INTERNATIONAL Box Van



1988 CHEVROLET 1500 Pickup



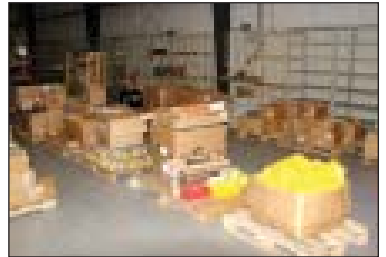
EUBANKS Wire Stripper Cutter



NEW HERMES VANGUARD Engraving Plotter



Electrical Inventory



Electrical Inventory



Office Furniture



Office Furniture



Cafeteria Furniture



File Cabinets

LODGING

- Drury Inn St. Peters • 170 Westfield Dr., Saint Peters, MO (636) 397-9700
- Super 8 Motel O'Fallon • 987 West Terra Lane, O'Fallon, MO (636) 272-7272
- Hilton Garden Inn St. Louis / O'Fallon • 2310 Technology Drive, O'Fallon, MO (636) 625-2700
- Holiday Inn Express Hotel & Suites St. Louis West – O'Fallon • 1175 Technology Drive, O'Fallon, MO (800) 465-4329

DIRECTIONS

FROM: ST. LOUIS, MO

East or Westbound on I-70, Exit 216 (Bryan Road), North 1000' to West Terra Lane, East ½ Mile on Terra Lane to North Central Drive, North on Central Drive ½ Mile to Sale Site on Left, Signs will be posted.

**LEASE/FINANCING
AVAILABLE**

**DIRECT FROM
Charcole Capital Corporation
www.charcolecapital.com**

**TO SCHEDULE AN AUCTION OR APPRAISAL
CALL 818.508.7034**

**LIVE
ON-SITE
WEBCAST**

MACHINERY AUCTION

THURSDAY, OCTOBER 2, 2008

US Bankruptcy Court, Case #08-43324-399



Formerly of:
**ALBERS
MANUFACTURING
COMPANY, INC.**

**LATE MODEL STATE OF THE ART
CNC METALWORKING FACILITY
MOST EQUIPMENT 2000 AND NEWER!**

AUCTION

Thursday, October 2nd
Beginning at 10:00am CDT

PREVIEW

Wednesday, October 1st
9:00am to 4:00pm CDT

LOCATION

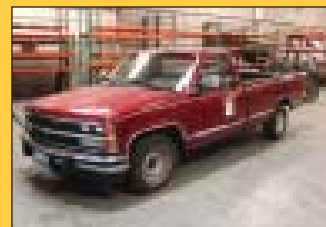
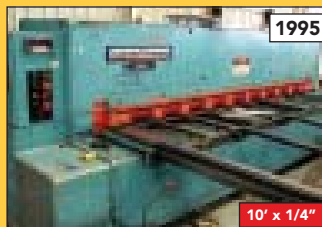
85 North Central Drive
O'Fallon, MO 63366

FOR THE COMPLETE TERMS & CONDITIONS OF THE AUCTION

Please visit our website www.BIDITUP.com and click on **ALBERS MANUFACTURING CO., INC.**

Thinking of having an auction or need an appraisal? Call us at 818.508.7034

FEATURED AUCTION
THURSDAY, OCTOBER 2, 2008
Beginning at 10:00am CDT
O'FALLON, MO
US Bankruptcy Court, Case #08-43324-399
Formerly of:
**ALBERS MANUFACTURING
COMPANY, INC.**
**LATE MODEL STATE OF THE ART
CNC METALWORKING FACILITY**



BIDITUP™
AUCTIONS & APPRAISALS WORLDWIDE
11426 Ventura Boulevard
Studio City, California 91604
Phone: 818.508.7034
Fax: 818.508.3025
info@biditup.com

MACHINERY AUCTION, LOOK INSIDE!

**ATTENTION: PLANT MANAGER
OR EQUIPMENT BUYER**

For a Complete Listing of
Upcoming Auctions Visit
www.BIDITUP.com
Register Online and Receive Auction
Updates and Information via E-mail.

WEBCAST



Can't attend the auction in person? You can participate and bid in real time via the Internet. Preview assets with detailed digital photos, lot catalogs, and in-depth descriptions.

For more information, visit
www.BIDITUP.com