

**BIDITUP™** LIVE ON-SITE  
AUCTIONS & APPRAISALS WORLDWIDE & WEBCAST

# AUCTION

**Tuesday, May 8, 2007**  
**Beginning at 10:30 A.M. PDT**  
**950 TURNBULL CANYON ROAD**  
**CITY OF INDUSTRY, CA 91745 USA**

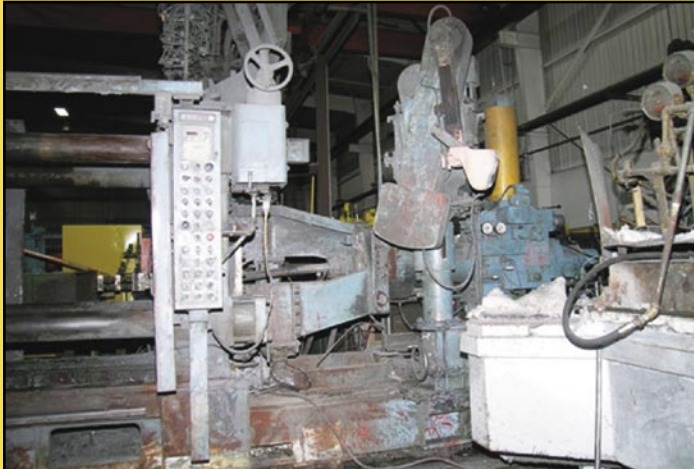


**WEBCAST**  
 Can't attend the auction in person?  
 Bid live on [WWW.BIDITUP.COM](http://WWW.BIDITUP.COM)

**ASSETS NO LONGER REQUIRED IN THE CONTINUING OPERATIONS OF**  
**— CASCADE DIE CASTING GROUP, INC. —**



**COMPLETE ALUMINUM DIE CAST FACILITY WITH CNC MACHINING, MACHINE TOOLS, TRIM PRESSES, FURNACES, INSPECTION, ROLLING STOCK & MUCH MORE**



Ube 880G, With Factory Automation



Ube 550 Ton Die Cast Machine



Ube 350G Machines, With Uni-FF Shot, Ube Auto-Ladle and Rimrock Sprayer



OKK CNC Machining Center, Mdl. VI

- ▼ DIE CASTING MACHINES
- ▼ MELT DEPARTMENT
- ▼ QUALITY CONTROL
- ▼ PLANT SUPPORT
- ▼ TRIM PRESSES
- ▼ SECONDARY OPERATION
- ▼ TOOLROOM
- ▼ MISCELLANEOUS

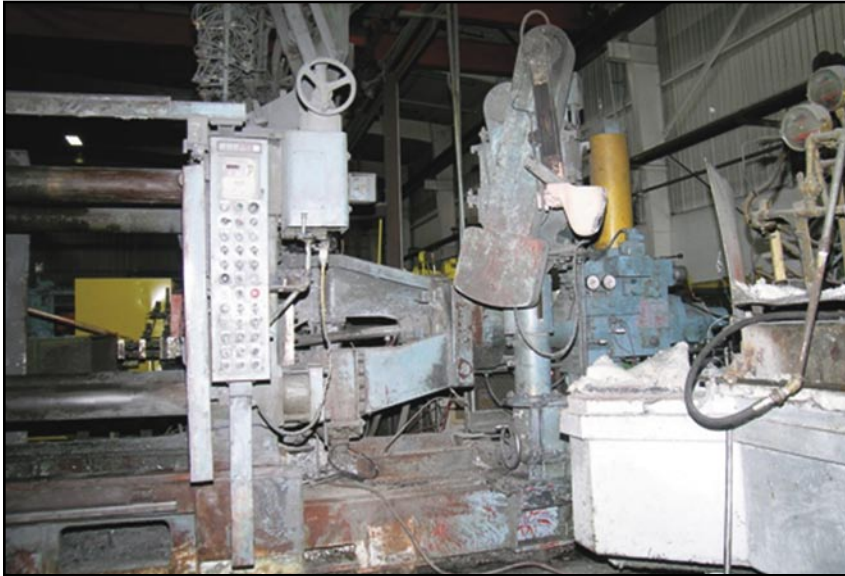
**BIDITUP AUCTIONS & APPRAISALS WORLDWIDE**

[www.BIDITUP.com](http://www.BIDITUP.com)

# DIE CASTING MACHINES

## DIE CASTING MACHINES

**XLO B&T (1,200 Ton) Cold Chamber Aluminum Die Cast Machine**, Equipped With Allen-Bradley PLC Controls, Electric Motorized Die Height Adjustment, Air Safety Ratchet Device, Hydraulic Ejection System, (2) Core Circuits, (2) Shot Positions (Center and 12") Rimrock MDL. 305 Auto-Ladle, Specifications: 71" Platens (Width and Height), 42" of Tie Bar Clearance, 24" of Die Stroke, 18"-50" of Die Thickness, 40" Plunger Stroke



Ube 880G, With Factory Automation



Harvill 850 Ton Machine



Harvill Control Panel, With Allen-Bradley PLC Controls



B&T 1,200 Ton



Harvill 1,000 Ton Shot End

**Harvill 1057 (1,100 Ton) Cold Chamber Aluminum Die Cast Machine**, Equipped With Allen-Bradley PLC Controls, Electric Motorized Die Height Adjustment, Air Safety Ratchet Device, Hydraulic Bumper Plate Ejection System, 2 Core Circuits, Two Shot Positions (Center & -12"), Rimrock MDL. 305 Auto-Ladle and Rimrock 410 Sprayer. Specifications: 71" Platens (Width & Height), 42" of Tie Bar Clearance, 24" of Die Stroke, 18"-50" of Die Thickness, 40" Plunger Stroke

**Ube 800 GII (880 U.S. Tons) Cold Chamber Aluminum Die Cast Machine**, Equipped With Ube Uni-FF (Flash Free) Shot System, Allen-Bradley SLC 5/01 Controls, Electric Motorized Die Height Adjustment, Air Safety Ratchet Device, Hydraulic Bumper Plate Ejection System, Automatic Tie Bar Puller (On Top Operator Side Tie Bar) 2 Core Circuits, Inserted Shot Positions (Center to -175mm), Fully Automated With Ube Auto-Ladle Ube Die Sprayer, and Ube Parts Extractor. Specifications: 53" Platens (Width & Height), 29.9" of Die Stroke, 17.7"-37.40" of Die Thickness, 69 Ton Shot Ends With 26.7" Plunger Stroke, Maximum Fast Shot Speed of 175 Inches Per Second. ONE MACHINE AVAILABLE!

**Harvill 857 (850 Ton) Cold Chamber Aluminum Die Cast Machine**, Equipped With Allen-Bradley PLC Controls, Electric Motorized Die Height Adjustment, Air Safety Ratchet Device, Hydraulic Bumper Plate Ejection System, (2) Core Circuits, (2) Shot Positions (Center & -12"), Rimrock MDL. 305 Auto-Ladle and Rimrock 410 Sprayer. Specifications: 60" Platens (Width & Height), 36" of Tie Bar Clearance, 22" of Die Stroke, 12"-38" of Die Thickness, 30" Plunger Stroke

**B&T 850 (850 Ton) Cold Chamber Aluminum Die Cast Machine**, Equipped With Electric Motorized Die Height Adjustment, Air Safety Ratchet Device, Hydraulic Ejection System, 2 Core Circuits, Two Shot Positions (Center & -12"), Rimrock MDL. 305 Auto-Ladle and Rimrock 410 Sprayer. Specifications: 60" x 71" Platens (Width & Height), 36-1/2" of Tie Bar Clearance, 22" of Die Stroke, 18"-38" of Die Thickness, 27" Plunger Stroke

**Harvill 657 (650 Ton) Cold Chamber Aluminum Die Cast Machine**, Equipped With Allen-Bradley PLC Controls, Electric Motorized Die Height Adjustment, Air Safety Ratchet Device, Hydraulic Bumper Plate Ejection System, 2 Core Circuits, Two Shot Positions (Center & -9"), Rimrock MDL. 305 Auto-Ladle and Rimrock 410 Sprayer With Rimrock Triangle Controls. Specifications: 51" Platens (Width & Height), 30" of Tie Bar Clearance, 18" of Die Stroke, 10"-36" of Die Thickness, 24" Plunger Stroke



Harvill 1,000 Ton

**TO SCHEDULE AN AUCTION OR APPRAISAL, CALL (818) 508-7034**

# DIE CASTING MACHINES



Ube 550 Ton Die Cast Machine



Ube 550G, With Allen-Bradley Controls



Ube 350G, With Uni-FF Shot End



(1 OF 4) Ube 350G Machines, With Uni-FF Shot, Ube Auto-Ladle and Rimrock Sprayer



Ube 350G Control Panel, With Factory Installed Allen-Bradley SLC 5 Series Control



Harvill 650, With Rimrock 305 Ladle and 410 Sprayer



HPM D-600-A



Harvill 600 Ton Machine



Harvill 650 Ton Machine, With Allen-Bradley Controls

**HPM D-600-A (600 Ton) Cold Chamber Aluminum Die Cast Machine,** Equipped With Allen-Bradley Controls, Electric Motorized Die Height Adjustment, Air Safety Ratchet Device, Bumper Plate Ejection System, 2 Core Circuits, Two Shot Positions (Center & -9"), Specifications: 46" Platens (Width & Height), 28" of Tie Bar Clearance, 18" of Die Stroke, 12"-28" of Die Thickness, 22" Plunger Stroke

**Ube 550 GII (550 U.S. Tons) Cold Chamber Aluminum Die Cast Machine,** Equipped With Ube Uni-FF (Flash Free) Shot System, Allen-Bradley SLC 5/01 Controls, Electric Motorized Die Height Adjustment, Air Safety Ratchet Device, Hydraulic Bumper Plate Ejection System, 2 Core Circuits, Two Shot Positions (Center & -175mm), Ube Auto-Ladle. Specifications: 42" Platens (Width & Height), 26" of Tie Bar Clearance, 22" of Die Stroke, 13.75"-33.5" of Die Thickness, 54 Ton Shot Ends With 22.8" Plunger Stroke, Maximum Fast Shot Speed of 175 Inches Per Second. TWO MACHINES AVAILABLE - BOTH NEW IN 1991

**Harvill 457 (450 Ton) Cold Chamber Aluminum Die Cast Machine,** Equipped With Allen-Bradley PLC Controls, Hydraulic Motorized Die Height Adjustment, Air Safety Ratchet Device, Hydraulic Bumper Plate Ejection System, 2 Core Circuits, Two Shot Positions (Center & -6"), Rimrock MDL. 305 Auto-Ladle. Specifications: 43" Platens (Width & Height), 24" of Tie Bar Clearance, 14" of Die Stroke, 8"-30" of Die Thickness, 18" Plunger Stroke

**(4) Ube 350 GII (385 U.S. Tons) Cold Chamber Aluminum Die Cast Machine,** Equipped With Ube Uni-FF (Flash Free) Shot System, Allen-Bradley SLC 5/01 Controls, Electric Motorized Die Height Adjustment, Air Safety Ratchet Device, Hydraulic Bumper Plate Ejection System, 2 Core Circuits, Two Shot Positions (Center & -125mm), Ube Auto-Ladle. Specifications: 37" Platens (Width & Height), 22.8" of Tie Bar Clearance, 16.5" of Die Stroke, 11.8"-27.6" of Die Thickness, 37.5 Ton Shot Ends With 18.9" Plunger Stroke, Maximum Fast Shot Speed of 175 Inches Per Second. FOUR MACHINES AVAILABLE - TWO NEW IN 1996, ONE IN 1994 AND ONE IN 1993

# TRIM PRESSES, MELT DEPARTMENT



Trim Press 10 Ton



10 Ton Trim Press



B&T Trim Press "Rapid Press," 15 Ton



B&T Mdl. XLO Trim Press "Rapid Press" 30 Ton



Greenlee 10 Ton, 18 x 24 Table



Greenlee 10-50 Ton Trim Press



Kard Trim Press, 50 Ton



Kard Trim Press, 30 Ton

## TRIM PRESSES

- Kard Trim Press, 50 Ton, 2300 PSI, 36" x 36" Table**
- Kard Trim Press, 30 Ton, MDL. TP-30-4, 30" x 32" Table**
- B&T MDL. XLO Trim Press "Rapid Press," 30 Ton, 3' x 5' Table**
- Trim Press, 30 Ton, 40" x 40" Table**
- Kard 30 Ton Trim Press MDL. FP-30-1-4, 24" x 36" Table, 10 HP**
- Greenlee 10-15 Ton Trim Press, 24" x 24" Table**
- B&T Trim Press "Rapid Press," 15 Ton, 24" x 36" Table**
- Greenlee 10 Ton Trim Press, 28" x 32" Table**
- B&T 5-10 Ton Trim Press, 32" x 28" Table**
- Greenlee 10 Ton Trim Press, 15 HP, 30" x 30" Table, S/N TP5293**
- Greenlee 10 Ton 18" x 24" Table**
- Trim Press, 10 Ton, 52" x 52" Table**
- (3) Trim Presses, 10 Ton**

## MELT DEPARTMENT

- Shafer Aluminum Melt Furnace, 11' Wide x 17' Long x 12' High, 30,000 Lb. cap., Rated at 4,000,000 BTU.**
- Goldcoast Aluminum Melt Furnace, With After Burner, 18' Wide x 17' Long x 14' High, 29,000 Lb. cap., 4,000,000 BTU, Gas or Oil Fired, 15 HP Blower**
- Aluminum Melt Furnace, 6' Dia. x 7' High, 4000 Lb. cap., 1,400,000 BTU**
- Lindberg/MPH Aluminum Melt Furnace, 1500 Lb./Hr., 500,000 BTU, S/N L-1057**
- (12) Stationary Holding Furnaces, Gas Fired, 800-4000 Lb. Holding cap.**



Shafer Aluminum Melt Furnace



Goldcoast Aluminum Melt Furnace, With After Burner



Aluminum Melt Furnace



Lindberg/MPH Aluminum Melt Furnace



800 Lb. Stationary Holding Furnace



3500 Lb. Stationary Holding Furnace

**Can't make it to the auction in person? Bid live online at**

# SECONDARY OPERATION

## SECONDARY OPERATION



Sharnoa CNC Mill



Bridgeport Vertical CNC Mill Series II



Deka High Speed Drill, Mdl. HRG-1222-28



Deka High Speed Drill, Mdl. HRG-1222-28



Dumore Series 28 Automatic Drill and Tap



Zagar Openside Multi Head Tapping Machine



Clausing Drill Press



Acroloc High Speed Machining Center

**OKK CNC Machining Center MDL. VI**, Mach No.109, Mitsubishi Controls, S/N MA98241

**SNK CNC Lathe MDL. SUT-6**, Fanuc Series 21-F Controls

**Bridgeport Vertical CNC Mill Series II**, 15" x 38" Table, Vari-Speed 60-4200, 3 Axis, Bridgeport CNC Control

**Bridgeport Vertical Milling Machine**, Vari Speed, 160-5400 RPM, 1 1/2 HP, 9" x 42" Table, Power Travel, S/N J176172

**(4) Acroloc High Speed Machining Center**, Series 1000/11MA, 12 Position Tool Changer, General Numeric GNII Controls, S/Ns 86011754, 85-05-1646, 80-01-1753, 84-12-1568

**(4) Acroloc High Speed Machining Center**, Series M-15L, MDL. 1000/GN6MB, Auto 12 Position Tool Changer, GN6 Controls, S/Ns 833005, 12260, 2 (NA)

**Sharnoa CNC Mill**, MDL. SD 900/5, "14 x 48" Table, Sharnoa Tiger 1V Controls, S/N 19927-3/121

**Clausing Lathe MDL. 1300**, 13" x 48", Flame Hardened Ways, 1" Hole, S/N 131963

**(3) Deka Hi Speed Drill MDL. HRG-1222-28**, Vari-Speed 345-3126 RPM, S/Ns HRGA, 212975, HGR

**Zagar Openside Multi Head Tapping Machine**, 7 1/2 HP, 16" x 60" Table, With Synchro Tapper

**(4) Dumore Series 28 Automatic Drill & Tap**, S/N 8430, 8532, N/A

**Jarvis 4 Head High Speed Drill**

**Rexon Drill Press**, MDL. RDM-270K, 20-1/2"

**Delta Drill Press**, 14"

**Automated Finishing Systems Wet Type**, 12" x 25' Long Work Area, 24" x 25' Long Inclined Feed Belt, With Controls

**5' Diameter Rubber Lined Finishing Mill (No Name)**

**Clausing Drill Press**, 4 Heads Variable, Speeds 350-4000 RPM

**Delta Drill Press**, MDL. 17-900, 161/2"

**Excello 2-Spindle Horizontal Drill**

**Falcon Air Compressor MDL. B-2**

**(2) Baldor Double End Grinders**

**(2) 2002 Grizzly Stroke Sander**, MDL. 25394, 3 HP, 4" x 5' Belt, S/Ns 90118, 91572

**Grizzly Edge Sander**, MDL. G1531, 6" x 80"

**(2) Grizzly Dust Collectors**, 2 HP, With Drum

**Grizzly Spindle Sander**

**Burr King Belt Sander**, MDL. 960-400, S/N 1481

**Chemetron Gas Welder**, AC/DC 300HF



SNK CNC Lathe, Mdl. SUT-6



OKK CNC Machining Center, Mdl. VI



Excello 2-Spindle Horizontal Drill



Clausing Lathe, Mdl. 1300



2002 Grizzly Stroke Sander, Mdl. 25394



Grizzly Edge Sander, Mdl. G1531

**LEASE/FINANCING AVAILABLE DIRECT FROM BIDITUP Capital Corporation**

**TO SCHEDULE AN AUCTION OR APPRAISAL, CALL (818) 508-7034**

# QUALITY CONTROL, TOOLROOM

## QUALITY CONTROL

**Numerex CMM**, 40" x 50" Table, DRO

**ARL Spectrometer**, MDL. 3560

**3" x 4" Granite Surface Plate**

**2" x 3" Granite Surface Plate**

**Huge Quantity Inspection Equipment**, Including Micrometers, Height Gauges, Gauge Sets, Indicators, Pin Sets, Probes



Numerex CMM



ARL Spectrometer, Mdl. 3560

## TOOLROOM

**Lagun Vertical Mill**, MDL. FTV-2S 10" x 48" Table, All Power, With Atchison Cross Slide Rotary Table, With DRO

**Mori Seiki Engine Lathe**, MDL. MS-1250G, 4' Bed, S/N 8444

**Clearing-Harrison Lathe**, 12" x 36", 1" Hole

**Giddings & Lewis Horizontal Boring Mill**, MDL. 25, 30" x 48" Table, S/N 85

**Cincinnati Bickford Radial Arm Drill**, 8" x 4', 3' x 4' table

**DoAll V-36 Vertical Band Saw Variable Speed**, 30" x 30" Split Table

**DoAll Vertical Band Saw**, MDL. 1611-H, Variable Speed, With Welding Attachment MDL. DBW-1B, 24" x 32" table, 16" Throat, S/N 256-88186

**Horizontal Band Saw**, 10" x 48", 3 HP

**Gardner Surface Grinder**, MDL. 1230, 12" x 24" Mag. Chuck, S/N 609-3

**Dedtru Surface Grinder**, With 6" x 12" Brown & Sharpe Mag Chuck

**Reid Surface Grinder**, MDL. 2B 6" x 18" Mag Chuck With Dust Collector

**Boyar Schultz Surface Grinder**, MDL. 612, S/N 3-6120

**Rockwell Hardness Tester**, # 900-330

**Dake Manual Hydraulic Press**, 3" x 6" table



Gardner Surface Grinder, Mdl. 1230



Cincinnati Bickford Radial Arm Drill



Clearing-Harrison Lathe



Bridgeport Vertical Milling Machine



DoAll Vertical Band Saw, Mdl. 1611-H



Dake Manual Hydraulic Press



Lagun Vertical Mill, Mdl. FTV-2S



Dedtru Surface Grinder



Reid Surface Grinder, Mdl. 2B



Boyar Schultz Surface Grinder, Mdl. 612



Rockwell Hardness Tester



Mori Seiki Engine Lathe, Mdl. MS-1250G



Giddings & Lewis Horizontal Boring Mill, Mdl. 25



Horizontal Band Saw

**FOR LEASE & FINANCE SERVICES - BIDITUP CAPITAL CORPORATION**

**CALL 818-508-7034**

# PLANT SUPPORT, MISCELLANEOUS



Isuzu Truck



Advance Floor Sweeper, Mdl. HR2800



DoAll V-36 Vertical Band Saw



Deltech "Pyramid 2000" Air Dryer



Zurn Air Dryer, Mdl. R-75A



Lantech T Series Shrink Wrap



Erect-Veyor Steel Belt Conveyor



Prab Steel Belt Conveyor



Sterlco Hot Oil Unit, Mdl. S60626-BX



Roura Dump Hoppers



Gardner-Denver Air Compressor



Miller Trailblazer AC/DC Gas Welder, Mdl. 250G



Ridgid 535 Pipe Bender



Zero "Blast-N-Peen" Mdl. BNP 55G



Gardner-Denver Electra Screw



Ateq Pressure Test, Mdl. F2P

## PLANT SUPPORT

2005 Isuzu Truck, 26,000 Miles

(2) Gardner-Denver Air Compressor, MDL. EBPOMC, 100 HP, 125 PSI, S/N U62469

Gardner-Denver Electra Screw, 75 HP, 125 PSI

Zurn Air Dryer, MDL. R-75A, Max. Wk. Press. 200 PSI, S/N R-19385

Deltech "Pyramid 2000" Air Dryer

Ultra Sep Filter System

Sterlco Hot Oil Unit, MDL. S60626-BX, S/N 76311 RIM

Miller Trailblazer AC/DC Gas Welder, MDL. 250G, Power Generator Set

Ridgid 535 Pipe Bender

Erect-Veyor Steel Belt Conveyor Variable Speed, 34" x 15'

Steel Belt Conveyor, 18" x 12'

Prab Steel Belt Conveyor, Variable Speed, 36" W x 15' L

Big Joe Electric Lift MDL. 151-R6, 1500 Lb. Cap. S/N91410

Chop Saw

Zero "Blast-N-Peen," MDL. BNP 55G, 24 x 42 x 24H, With Dust Collector

Lantech T Series Shrink Wrap, With (2) 48" Wide x 12' Long Roller Conveyor With Indexing

Ateq Pressure Test, MDL. F2P

Advance Floor Sweeper, MDL. HR2800

60' of Die Racks, With Dies

Transcell Digital Floor Scale, MDL. TI-500E, 4' x 4' Platform

## MISCELLANEOUS

(20) Roura Dump Hoppers

Spare Reverb Furnaces and Ladlers; Vidmar Cabinets; Shop Supplies; Tooling; Supply Room; Workbenches; Pallet Racking; Pallet Jacks; Pumps; Totes; Fans; File Cabinets; Computers; Furniture; Much Much More

## LODGING

Courtyard-Hacienda Heights (3.1 miles)  
1905 S Azusa Avenue  
Hacienda Heights, CA  
626-965-1700

Carriage Inn Manor (1.3 miles)  
248 N. 1st Street  
La Puente, CA  
626-961-2834

Industry Inn (2.1 miles)  
13736 East Valley Boulevard  
La Puente, CA  
626-333-4440

## DIRECTIONS

From Los Angeles International Airport (LAX): Go east on World Way/ Center Way, merge onto South Sepulveda Boulevard/CA-1 South toward I-105. Take the Imperial Highway West/I-105 East ramp toward Imperial Terminal, merge onto I-105 East toward Norwalk, proceed 17 miles. Merge onto I-605 North, proceed 10 miles. Merge onto CA-60 East toward Pomona, proceed 3 miles. Take the 7th Avenue North Exit 14B toward Industry. Turn right onto South 7th Avenue, turn right onto East Gale Avenue. Turn left onto South Turnbull Canyon Road. Look for auction signs. Allow approximately 35 minutes travel time.

Can't make it to the auction in person? Bid live online at

[www.BIDITUP.com](http://www.BIDITUP.com)

**LIVE  
ON-SITE &  
WEBCAST**

# MACHINERY AUCTION

**May 8, 2007**

## ASSETS NO LONGER REQUIRED IN THE CONTINUING OPERATIONS OF CASCADE DIE CASTING GROUP, INC.



COMPLETE ALUMINUM DIE CAST FACILITY WITH CNC MACHINING, MACHINE TOOLS, TRIM PRESSES, FURNACES, INSPECTION, ROLLING STOCK & MUCH MORE

### AUCTION

Tuesday, May 8, 2007  
Beginning at 10:30 A.M. PDT

### PREVIEW

Monday, May 7, 2007  
9:00 A.M. to 4:00 P.M. PDT

### LOCATION

950 Turnbull Canyon Road  
City of Industry, CA 91745

See page 7 for directions & lodging

**FOR THE COMPLETE TERMS & CONDITIONS OF THIS AUCTION**

Please visit our website — [www.BIDITUP.com](http://www.BIDITUP.com) and click on Cascade Die Casting Group, Inc.

**NOW OFFERING IN-HOUSE FINANCING & LEASING. Call 818.508.7034**

### FEATURED AUCTION

Tuesday, May 8, 2007  
City of Industry, CA

ASSETS NO LONGER REQUIRED  
IN THE CONTINUING OPERATIONS OF

## CASCADE DIE CASTING GROUP, INC.

COMPLETE ALUMINUM DIE CAST FACILITY  
WITH CNC MACHINING, MACHINE TOOLS,  
TRIM PRESSES, FURNACES, INSPECTION,  
ROLLING STOCK & MUCH MORE



Ube 880G, With Factory Automation



< Ube 550G, With Allen-Bradley Controls

> (1 OF 4)  
Ube 350G  
Machines,  
With Uni-FF Shot, Ube Auto-Ladle  
and Rimrock Sprayer



OKK CNC Machining Center, Mdl. VI



**BIDITUP™**  
AUCTIONS & APPRAISALS WORLDWIDE

11426 Ventura Boulevard  
Studio City, California 91604  
Phone: 818.508.7034  
Fax: 818.508.3025  
info@biditup.com  
Steven R. Mattes, Auctioneer  
CA Bond # CSC 3062775

**MACHINERY AUCTION, LOOK INSIDE!**

**ATTENTION: PLANT MANAGER  
OR EQUIPMENT BUYER**

Presorted  
First Class Mail  
U.S. Postage  
PAID  
Eugene, Oregon  
Permit No. 305

For a Complete Listing of Upcoming Auctions  
Visit [www.BIDITUP.com](http://www.BIDITUP.com). Register Online and Receive  
Auction Updates & Information via E-mail.



### WEBCAST

Can't attend the auction in person? You can participate and bid in real time via the Internet. Preview assets with detailed digital photos, lot catalogs, and in-depth descriptions.

For more information, visit  
[www.BIDITUP.com](http://www.BIDITUP.com)

Please note, all webcast participants must submit a 25% deposit and signed registration forms no later than 24 hours before a sale.