

AUCTION

Wednesday, August 26th, 2009

Beginning at 10:00am PDT

942 South Stockton Avenue, Ripon (Modesto), CA 95366

**Preview: Monday & Tuesday, Aug. 24th & 25th, 2009, 9:00am to 4:00pm PDT
or prior by appointment**



WEBCAST

Can't attend the auction in person?
Bid live online at www.BIDITUP.com

*Assets No Longer
Required in the
Continuing Operations of:*



COMPLETE PAPER MILL & CONVERTING FACILITY

Featuring: 122"(3.1M) Trim Fourdrinier Paper Machine, Stock Preparation, Headbox, Dryer Section, Escher Wyss Reel, Valmet Slitter-Rewinder, Pasaban Sheeter (1999), Bielomatik Carton Packaging Line, Lenox Cut Size Sheeter, 110" & 85" Guillotine Cutters, Bielomatik Folio Wrapper (1997), Material Handling, Electrical, Stores, Machine Shop, Pumps, 2,500 Sections Pallet Racking, Stainless Steel Pipe, Embossers, Balers, Forklift & Rollclamp Trucks and Much More!



82" PASABAN KDD-2200 FOLIO SYNCHRONOUS ROTARY SHEETER MFG 1999



122" (3.10M) 65 - 325 GSM TRIM FOURD PRINTING & WRITING, COVER, LUXURY BAG, SPECIALTY GRADES (ALL COMPONENTS AVAILABLE)



REAM WRAPPER FOLIO BIELOMATIK MDL FSW500L/30 MFG 1997



Technical Assistance
Provided By:



www.globalequip.com

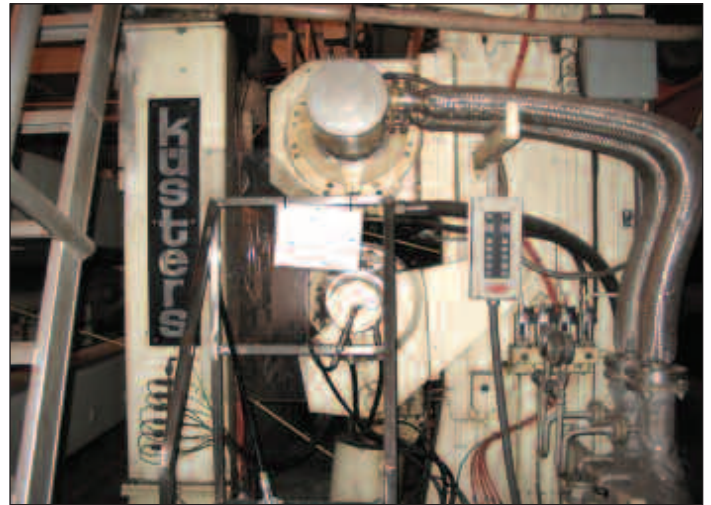
BIDITUP AUCTIONS & APPRAISALS WORLDWIDE: www.biditup.com

122" (3100 MM) TRIM FOURDRINIER PAPER MACHINE

Last producing 35,000 TPY (Approximately 100+ TPD) of 40 - 200 lb/3000 sq. ft. (65 to 325 gsm) of printing and writing paper, text and cover paper, luxury bag paper, and other specialty papers at up to 1180 FPM (360 MPM).



DRYER SECTION



KUSTERS CALENDER STACK

ALL PAPER MACHINE COMPONENTS WILL BE AUCTIONED INDIVIDUALLY AND THEN AS A LINE - TO BE SOLD TO THE HIGHEST BIDDER!

Major components consist of the following:

SULZER ESCHER WYSS STEP-DIFFUSER HYDRAULIC HEADBOX AND PE SYSTEM with a 132 1/2" (3366 MM) slice width, rated from 2950 to 5985 GPM (11,000 - 22,500 LPM) and 320 - 1130 FPM (97 - 344 MPM), with (24) slice actuators. Installed 1990.

BELOIT 138" WIDE X 113' LONG (3500 MM X 34.4 M) STAINLESS STEEL ROLL-OUT STYLE FOURDRINIER TABLE with 24" x 138" (610 MM x 3505 MM) wide breast roll, (2) wire showers, wire roll tensioner, (2) wire roll guides with Beloit pneumatic controls, table shake mechanism, Kan Engineering 4-foil forming board, (8) suction boxes and a 30" dia x 138" (762 MM x 3050 MM) wide Metso suction couch roll with 125 HP drive. Provision for a 24" diameter x 138" wide (610 MM x 3505 MM) Dandy roll, including the drive, framework, and Sinclair box).

1ST PRESS SECTION MANUFACTURED BY BELOIT, rated 150 PLI, and consisting of a 24" dia x 138" (610 MM x 3505 MM) wide hard covered top roll and a 24" x 138" bottom rubber covered suction roll

2ND PRESS SECTION MANUFACTURED BY BELOIT, rated 250 PLI) and consisting of a 24" dia x 138" (610 MM x 3505 MM) wide hard covered top roll, and a 24" x 138" bottom rubber covered blind drilled press rolls.

3RD SMOOTHING PRESS RATED FOR 350 PLI

(44) 48" DIAMETER X 138" (1220 MM X 3505 MM) FACE BELOIT DRYER CANS rated 75 PSI @ 450 deg. F (5.17 bar @ 232 deg C). 1st Dryer Section consists of (12) dryers with a 132" wide x 196' long (3350 MM x 59.7 M) Uni-Run felt, 2nd dryer section consists of (24) dryers with a 132" wide x 177' (3350 MM x 53.9 M) long top felt and a 132" wide x 193' (3350 MM x 58.8 M) long bottom felt, and 3rd section consists of (8) dryers with a 132" wide 61' (3350 MM x 18.6 M) long top felt and a 133" wide x 75 1/2' (3378 MM x 23 M) long bottom felt

2-ROLL, 136" (3454 MM) WIDE BREAKER STACK

BELOIT 2-ROLL HORIZONTAL SIZE PRESS

ABB SCANNER SYSTEM (2000)-NOT AVAILABLE

IMPACT SERIES 2, INFRA-PAC INFRARED DRYER, installed in 1985.

KUSTERS 3-ROLL HI-PRESSURE CALENDER STACK rated for 1000 PLI consisting of approximate 19 1/2" diameter x 135 3/4" face top and bottom S-rolls and an approximate 24" diameter x 135 3/4" (610 MM x 3448 MM) face thermal middle roll. 165.35" (4200 MM) bearing centers. Includes spare queen and swim rolls.

WEB TURN-UP SYSTEM

ESCHER WYSS REEL with a 36" diameter x 138" (914 MM x 3505 MM) wide drum face capable of handling up to a 15,000 pounds (6800 KG). Mfg. in 1991.

VALMET MODEL KL200 2-DRUM SHAFTLESS SLITTER REWINDER capable of running up to 6500 FPM (1980 MPM) and winding up to 72" (1800 MM) roll diameter. With reel spool type unwind, shear slitting, (11) pneumatically actuated slitters, hydraulic roll kicker, roll lowering cradle, trim system, hydraulic pump, and (2) 200 HP main General Electric DC drive system. Manufactured in 1991.

NASH PUMPS-GOULD PUMPS

APPROACH FLOW

Bird model 41 S/S Centriscreen belt driven with .078" slots, Goulds fan pump (48) Celleco 350 Cleanpac primary cleaners, (24) Celleco 350 Cleanpac secondary cleaners, (12) Celleco 350 Cleanpac tertiary cleaners, (6) Celleco 350 Cleanpac quaternary cleaners, and a stock saver system consisting of (6) Black Clawson Ultracone cleaners. (3) Beloit Jones 26", series 4000 DD refiners. (2) S/S Bird Jonsson vibrating screens, an approximate 300 HP Beloit Fibermaster II conical refiner and a 500 HP Beloit Majestic conical refiner. 12' diameter (3.66 M) Beloit model 3220S vertical S/S continuous Shark Pulper belt driven by an approximate 200 HP motor, a 520 cubic foot (14.6 cubic meter), 2000 lb (900 KG). Jones No. 3 Hi-Lo batch pulper with (2) 100 HP motors, T304 stainless steel, 4000 lb (1800 KG). Jones No. 4 Pulpmaster S/S with a Mark II rotor driven by a 250 HP motor. Bran + Luebbe color and die system. Starch cooking system with 250 HP Kady Mill



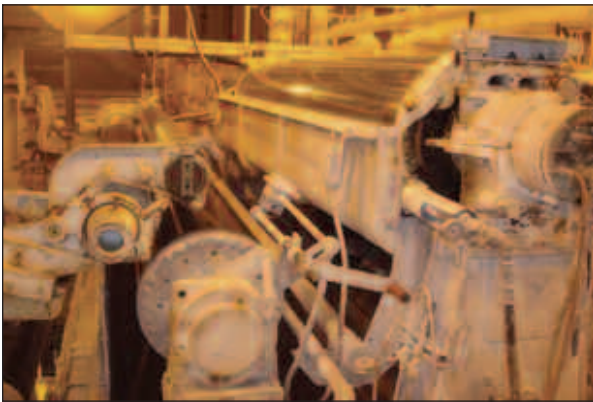
VALMET SLITTER REWINDER



NASH VACUUM PUMPS



BELOIT HYDRAPULPER



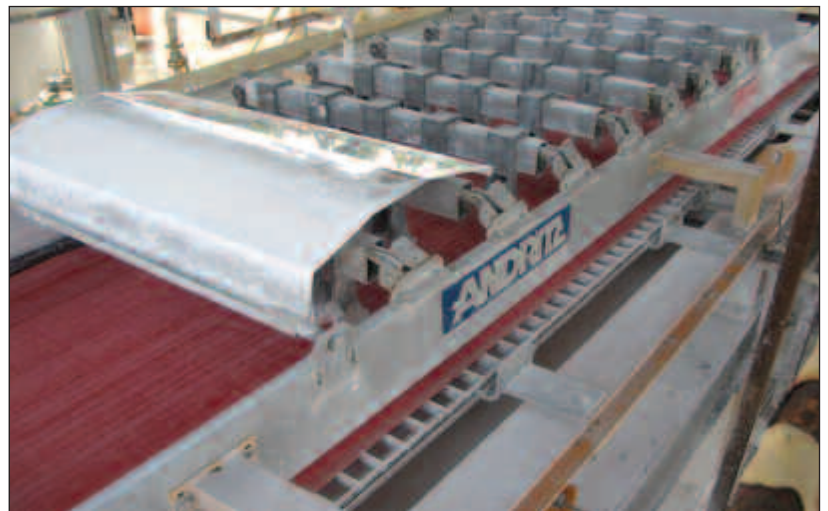
SUCTION COUCH SS



TANKS

ANDRITZ BELT PRESS

Andritz 1.0 meter wide, model SMX-S8P low profile belt filter press. Previously used as a 3 BDTPD (8 hours) paper mill sludge clarifier with 30 - 35% discharge solids.



82" PASABAN KDD-2200 FOLIO SYNCHRONOUS ROTARY SHEETER (1999)

FOUR (4) WEB SHAFTLESS UNWIND SYSTEM with 1500mm max. roll diameter, Min. sheet length 400mm. Max. sheet length 1600mm, 3" and 6" roll core chuck diameter. Max. operating speed 400 MPM. The system has both Folio Ream Discharge and Continuous Full Pile Stacking. Packaging for Automatic Folio Carton, Folio Ream Wrapping and Reams on Skid-Variable Configuration

The KDD model sheeter is used for both paper and board applications.

(4) PIVOTING SHAFTLESS UNWIND STANDS, each with overhead deflection roll, Autoweb tensioning control unit, backstand decurler station. 1500mm O.D. capacity

AUTOMATIC GUIDING AND CENTERING SYSTEM

REEL SPLICING, CORE REMOVAL AND SPLICE DETECTION SYSTEM

5-HEAD SLITTING SECTION, with automatic and motorized manual positioning

PULL ROLLS, with motorized ceramic coated bottom roll and pneumatically actuated polyurethane coated top pinch roll

SYNCHRONIZED DIRECT DRIVE CUTTING SECTION, with autosheet length graduation. Update in 2006 with Aluminum Rotating knife Cylinders and software update

HIGH SPEED DELIVERY SECTION, with motorized belt/tape conveyor and reject gate

MOVABLE CARRIAGE OVERLAPPING SECTION

SHEET DELIVERY TO LAYBOY, including sheet delivery section, stack front leveling system side jogging plates, backstop section, (2) hydraulic layboy stations. Max. pile height 72" (1828mm) (Including pallet)

ADDITIONAL EQUIPMENT TO BE SOLD:

Complete Bielomatik Folio Cartoning line

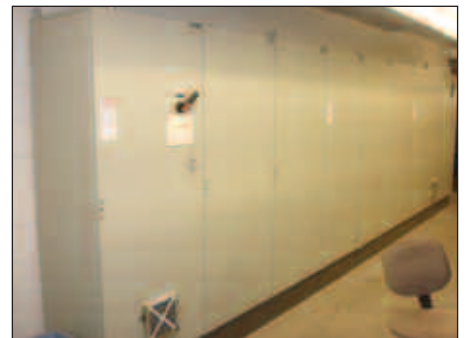
Complete Bielomatik Folio Ream Wrap Line Mdl FSW500L/30.

Lithibar Matik Carton labeling & Palletizing system,

Complete specifications on request.

Numerous spare parts will be provided with the machine.

All Equipment in Excellent Condition.



BIELOMATIK MODEL FSC-500 CARTON PACKAGING LINE (1999)

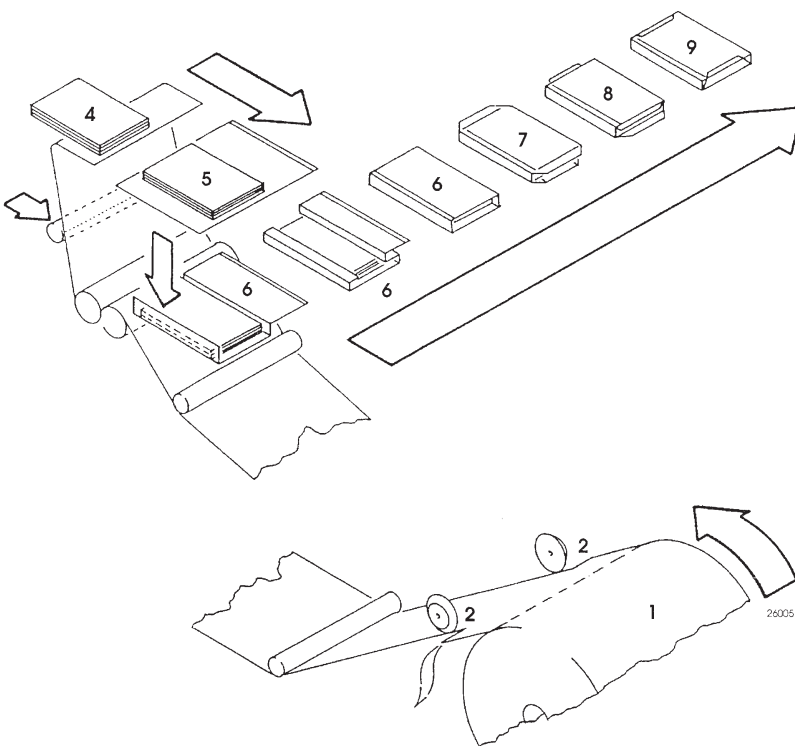


BIELOMATIK MODEL FSW500L/30 FOLIO SIZE REAM WRAPPER. MFG. 1997

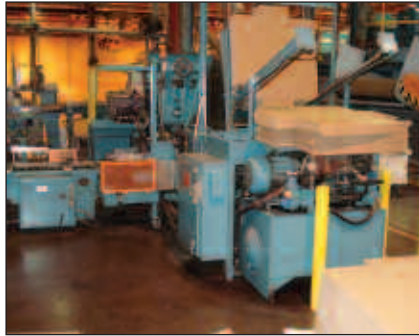
The reams, once wrapped are palletized on pallets. Unit rated for 12 Packages per Minute. Handle Ream Sizes min-max: A-420-1000mm; B-530-1400mm; H-15-80mm. Kraft or Poly wrapping capability. Overall Dimensions: 12M x 14M

FLOW CHART

- 1 Paper unwinding
- 2 Wrapping paper trimming
- 3 Paper unwinding and cutting
- 4 Ream + wrapping paper infeed
- 5 Glue applied cross-wise
- 6 Ream wrapping to form tube and conveying
- 7 Sides folded
- 8 Sides glued
- 9 Discharge onto palletizer



CONVERTING



LENOX (8) POCKET CUT SIZE LINE W/FULL PACKAGING SYSTEM

Can Produce 8 1/2" X 11" through 8 1/2" X 17", including A3 - A4 sizes. (5) motorized adjustable width Shaftless floor pick up roll stands, 60" OD capacity. (8) Tidland adjustable pneumatically activated rotary splitter knives, Belt type transfer conveyor. Pemcomatic Model 101 sheet transfer conveyor, S/N P2543, 2-Lane, with transverse transfer chain stack conveyor. Pemco Model 66L, paper stack wrapping section, S/N P-2544, with approximately 44" max. width paper roll feed, hot melt glue station. Reconditioned in 2005. Hytrol motorized belt conveyor, 16" wide x 60" long. Pemco Model 75R-6-R inkjet labeling station, S/N P2566. Pemco Model 120 ream label inspection station S/N P1050. Pemco Model 86-OH Box former ream case packer S/N P1052, with case/carton stack feeder, Nordson Model 2302 hot melt glue system. Pemco Model 77R inkjet case labeler, S/N P1054, with transfer conveyor Pemco case lid former and lid application station with Nordson Model 2304 hot melt glue system. Motorized belt strapper infeed conveyor, 12" x 36". Signode Model ML2EE automatic pass through case wrapper, S/N 82634, 24" x 24". Colombia Model 380-565-10 case palletizer. Stacking machine, S/N 3-7815G, with vertical stack pallet feeder.

57" MAXSON MSH SINGLE ROTARY KNIFE SHEETER

(4) Langston shaftless floor pick up unwind stands. Pneumatic brakes. Automatic tension control with guide roll system, (3) rotary Tidland Class 111 shear knife slitters, adjustable rotary knife for sheet lengths from 16" to 60". Overlap tape delivery with high and low speed tapes. Full size skid pile with joggers. Two (2) Motor ABB drive system with ABB Panel View 550 touch screen control. Quamtech Model 2800 digital counter control Aercology Model DM-1500 dust collection system. Complete drive system was upgraded in 2005 by A.J. Engineering.



57" MAXSON MSH SINGLE ROTARY KNIFE SHEETER



SHAFTLESS UNWIND STANDS

110" DEXTER-LAWSON MPU GUILLOTINE CUTTER

MCC Computerized Power Back gauge. 15 HP motor. 7.5" height opening. Maximum pile height 7". Complete Southworth Handling system. S/N 861101.

85" SEYBOLD MODEL CJH-MS GUILLOTINE CUTTER

Microcut computer. Power Back gauge. Serial # 4696 Complete Southworth Handling System.



57" MAXSON MSH SINGLE ROTARY KNIFE SHEETER



110" DEXTER-LAWSON MDL MPU 110 GUILLOTINE CUTTER

ADDITIONAL CONVERTING

62" KIDDER CW SLITTER REWINDER Shear slitting, 42" OD rewind. Control Panel.

54" EGAN MACHINE, INC. EMBOSSER Unwind and rewind system Motorized roll lift, tension system, controls, spare embossing rolls.

54" DORNBUSCH & CO. EMBOSSER Unwind and rewind system. Motorized lift, tension system, controls, numerous embossing rolls.

120" APPLETON S200 CORE CUTTER with several mandrels for different size cores

WOODWARD JOGGER AERATOR PALLET TURNER MFG. 2000 with hydraulic power unit.

JAMES BRINKLEY ROLL SPLITTER 60" dia x 72" wide (1500 MM x 1800 MM)

NEILSEN AND HIEBERT ROLL HANDLING SYSTEM with slat conveyor, scale, Kicker, turntable. Used for plastic film roll wrapping.

Lantech Wrappers, Trim Blowers, Chain Hoists, Signode Compression Strapper, Material Conveyors, Box Sealers, Scales, Order pickers, Trim Carts, Storage Carts, Balers, Compressors, In-Floor conveyor,

LODGING

HOLIDAY INN EXPRESS
4300 Bangs Avenue
Modesto, CA 95356
Phone: 209-543-9009

LA QUINTA INN & SUITES
1524 Colony Road
Ripon, CA 95366
Phone: 209-599-8999

DIRECTIONS TO THE RIPON MILL FROM AREA AIRPORTS:

MODESTO: Approx. driving time 5 hours Mitchell road north. (Mitchell becomes Old Oakdale Road.) Old Oakdale Road north. Briggsmore Avenue west. Highway 99 north. Ripon exit. Go over overpass to South Stockton Avenue stop sign. Turn left. Continue straight onto mill property. Turn at first right. Proceed into Fox River Paper Company Ripon Mill parking lot.

SAN FRANCISCO: Approx. driving time 1.5 hours. Hwy 101 south (towards San Jose). Hwy 92 east over San Mateo Bridge (there is no toll when traveling in this direction). Hwy 880 north (to Oakland and Stockton). Hwy 238 east. Hwy 580 east (to Stockton). Hwy 205 east (left two lanes merge I-5 north.) Hwy 120 east (to Manteca). Hwy 99 south. Ripon exit. Turn eight down overpass to South Stockton Avenue stop sign. Turn left. Continue straight onto mill property. Turn at first right. Proceed into Fox River Paper Company Ripon Mill parking lot.

CONVERTING



BRINKLEY ROLL SPLITTER



LANTECH WRAPPER



BALEMASTER MDL 4275 AUTOTIE HORIZONTAL BALER (1997)



WOODWARD JOGGER AERATOR PALLET TURNER MFR. 2000



EMBOSSER



MARREN SHREDDER MDL 72 WITH PINCH CONVEYOR (1999)



120" APPLETON S200 CORE CUTTER

MACHINE SHOP

South Bend 10 HP Radial Drill, 36" Doall Zephyr vertical bandsaw, Birmingham vertical milling machine w/digital readout, Clausing-Metosa 3-Jaw, 16-speed engine lathe, American Tool Works 260" 4-Jaw, 12-speed engine lathe, squaring shear, Kalamazoo metal cutting band saw, double end grinders, plasma cutters, spot welders, waste compactor, oxygen/acetylene torch set, bead blast cabinet, tube & pipe benders, 80 ton bench frame press, gas compressor, pipe threader, plate bending rolls, Dake 2 1/2 ton Arbor press, Pexto 48" manual apron brake.



WELDING EQUIPMENT



SHEAR



RADIAL ARM DRILL

LIFT TRUCKS

(20)+ Yale fork lifts, 4000 – 6000 lb, propane and electric, 2 & 3 stage masts, cushion tires
Nissan 7000 lb, pneumatic tires, 3-stage mast w/side shifter

Nissan 8000 lb, cushion tires, 3-stage mast, w/Cascades roll clamp

Komatsu, Caterpillar, & Clark propane fork lifts
(6) Yale stand-up riders with 311" lift height
(3) Hyster electric pallet jacks

Battery charging & installation station with 48, 36, & 24 volt battery chargers

TANKS

Numerous S/S Tanks, Carbon Steel Tanks, Fiberglass Tanks.

Sulfuric Acid Storage & Distribution System



LIFT TRUCKS

Over 20 Available!



VIEW OF BEARINGS



VIEW OF PARTS

2,500 SECTIONS OF PALLET RACKING – UP TO 5 TIER

OCCUPIES 100,000 SQ. FT WAREHOUSE SPACE
Mfg. Frazier Industries, NJ; Built in 2000; Bolt together Style 25' Tall (1066 Uprights); 10' Length cross beams; 40" Deep; All levels are decked. Units are presently used back to back. Therefore: 120" wide x 65" high x 80" deep.



TO BE SOLD BY THE SECTION

LAB EQUIPMENT

Stiffness tester, TMI 4110 Densometer, Emendorf tearing tester, BF Perkins bust strength tester, folding tester, Blue M oven, Hach 2100A Turbidimeter, Thermolyne lab furnace, 20" Gullotine, Noble & Wood sample sheet machine, Macbeth color tester, particle charge detector, light box, opacimeter, Tensile tester, thickness, bond, and smoothness testers, scales.

MISCELLANEOUS

Lg. Quantity of Tool Cabinets, S/S Valves, Rolling Carts, Testing Equipment, Vari-Drives, Bearings, Pipe Fittings, Nuts, Bolts & Hardware, Guard Rail, Threaded Rod, Motors, Transformers, Rigging Equipment, Plumbing Supplies, Electrical Shop, Welding Shop, Fencing, Hand & Power Tools, Portable Loading Ramp, Tennant Floor Sweepers.

**LIVE
ON-SITE &
WEBCAST**

MACHINERY AUCTION

WEDNESDAY AUGUST 26th, 2009

*Assets No Longer
Required in the
Continuing Operations of:*



COMPLETE PAPER MILL & CONVERTING FACILITY

AUCTION

Wednesday, August 26th, 2009
Beginning at 10:00am PDT

PREVIEW

Aug. 24th & 25th, 9am to 4pm PDT
or prior by appointment - Call Auctioneer

LOCATION

942 South Stockton Avenue
Ripon (Modesto), CA 95366

FOR THE COMPLETE TERMS & CONDITIONS OF THE AUCTION
Please visit our website www.BIDITUP.com and click on **NEENAH PAPER**

Thinking of having an auction or need an appraisal? Call us at 818.508.7034

▶ **FEATURED AUCTION**
WED., AUG. 26, 2009
Beginning at 10:00am PDT
Ripon (Modesto), CA

*Assets No Longer
Required in the
Continuing Operations of:*



**COMPLETE PAPER MILL &
CONVERTING FACILITY**



ANDRITZ BELT PRESS



110" DEXTER-LAWSON GUILLOTINE CUTTER



57" MAXSON ROTARY KNIFE SHEETER

BIDITUP™
AUCTIONS & APPRAISALS WORLDWIDE
11426 Ventura Boulevard
Studio City, California 91604
Phone: 818.508.7034
Fax: 818.508.3025
info@biditup.com

Steven Mattes, Auctioneer
CA Bond #CSC3062775

MACHINERY AUCTION, LOOK INSIDE!

**ATTENTION: PLANT MANAGER
OR EQUIPMENT BUYER**

**For a Complete Listing of
Upcoming Auctions**

Visit www.BIDITUP.com

Register Online and Receive Auction
Updates and Information via E-mail.

WEBCAST



Can't attend the auction in person? You can participate and bid in real time via the Internet. Preview assets with detailed digital photos, lot catalogs, and in-depth descriptions.

For more information, visit
www.BIDITUP.com