

# 2 AUCTIONS

**WEBCAST**  
Can't attend the auction in person?  
Bid live online at [www.BIDITUP.com](http://www.BIDITUP.com)

## AUCTION #1

**Tuesday, August 18th, 2009, 10:00am EDT**  
28195 Kehrig Drive, Chesterfield Township, MI 48047  
Preview: Monday, Aug. 17, 9am - 4pm EDT & Morning of Sale

*Plant Closed*



**State-of-the-Art CNC Mold Making Facility Consisting of Blow Molders, Injection Molders, and Vertical Machining Centers**



YCM SUPERMAX MDL. DCV3016B CNC BRIDGE VERTICAL MACHINING CENTER



165 TON MILLUTENSIL HYDRAULIC SPOTTING PRESS

## AUCTION #2

**Thursday, August 20th, 2009, 10:00am CDT**  
21467 Holyoke Avenue, Lakeville, MN 55044  
Preview: Wednesday, Aug. 19, 9am - 4pm CDT & Morning of Sale

*Formerly the Assets of DHY Corporation*



**State-of-the-Art CNC Machining Facility Consisting of CNC Horizontal Cell, CNC Turning Centers, CNC Automatics**

**\$1.3 Million Replacement Cost**



LEBLOND MAKINO A66E 4 AXES CNC HORIZONTAL MACHINING CENTERS



MATSUURA MAM-500HF-PC-2 CNC HORIZONTAL MACHINING CENTER

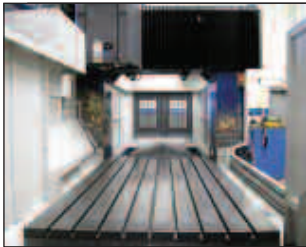
## AUCTION #1

Tuesday, August 18th, 2009 • Beginning at 10:00am EDT  
28195 Kehrig Drive, Chesterfield Township, MI 48047  
PREVIEW: Monday, August 17, 9am - 4pm EDT & Morning of Sale

Plant Closed

# RADIANCE MOLD & ENGINEERING

## STATE-OF-THE-ART CNC MOLD MAKING FACILITY CONSISTING OF BLOW MOLDERS, INJECTION MOLDERS & VERTICAL MACHINING CENTERS



YCM SUPERMAX MDL. DCV3016B CNC BRIDGE VERTICAL MACHINING CENTER

### CNC BRIDGE TYPE VERTICAL MACHINING CENTERS

(2) 2007 - YCM SUPERMAX, MDL. DCV3016B, Run Hours 4,613 & 5,046, Table 59" x 128.3", Table Load 22,000 Lbs, Travels: Table X-120.5"; Spindle Head Cross Travel Y-63"; Ram Vertical Travel Z-30"; Distance Between Columns 71.5", Spindle Nose to Table 37.9" Max, 40 Position ATC, Cat 50 Taper, Spindle Speeds 10,000 RPM, Fanuc 18i-MB CNC Control, S/N 0010 & 0021

1999 - TOSHIBA, MDL. MPF-2640C, Table 157.5" x 78.7", Table Load 44,000 Lbs, Travels: Table X-157.4", Spindle Head Cross Travel Y-102.4", Ram Vertical Travel Z-28.1"; Distance Between Columns 102.4", Spindle Nose to Table 41.3" Max, 24 Position ATC, Cat 50 Taper, Spindle Speeds 40 - 10,000 RPM, TOSNUC 888 CNC Control, Coolant Through Spindle, 36 HP Motor, Chip Conveyor, S/N 115F99

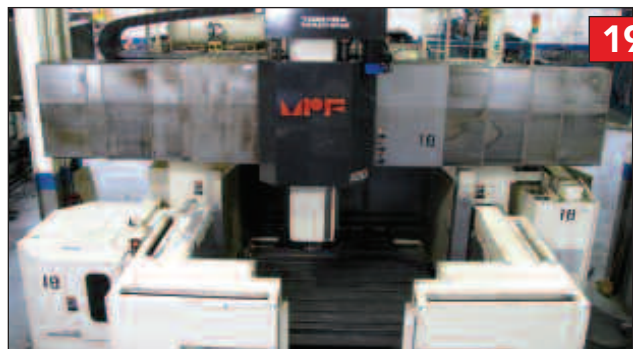
1997 - TOSHIBA, MDL. MPF-2114C, Table 70.9" x 55.1", Table Load 22,000 Lbs, Travels: Table X-55.1", Spindle Head Cross Travel Y-82.7", Ram Vertical Travel Z-28.1"; Distance Between Columns 82.7", Spindle Nose to Table 41.3" Max, 24 Position ATC, Cat 50 Taper, Spindle Speeds 40 - 8,000 RPM, TOSNUC 888 CNC Control, Coolant Through Spindle, 36 HP Motor, S/N 840 780

1999

TOSHIBA MDL.  
MPF-2640C  
CNC  
BRIDGE TYPE  
VERTICAL  
MACHINING  
CENTER

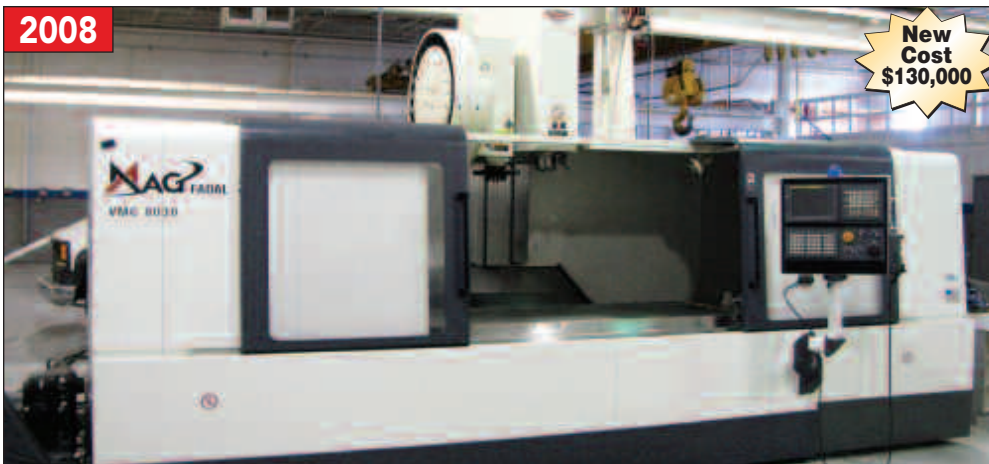


1997



TOSHIBA  
MDL.  
MPF-2114C  
CNC  
BRIDGE TYPE  
VERTICAL  
MACHINING  
CENTER





**2008**

**New Cost  
\$130,000**

**MAG/FADAL MDL. 8030HT CNC VERTICAL MACHINING CENTER**



**1998**

**OKK MDL. DGM-400 CNC GRAPHITE VMC**



**2008**

**New Cost  
\$115,000**

**(2) MAG/FADAL MDL. 6030HT CNC VERTICAL MACHINING CENTERS**



**1997**

**1 OF 2**

**FADAL MDL. 6030HT CNC VERTICAL MACHINING CENTER**



**1997**

**(2) FADAL MDL. 6030HT CNC VERTICAL MACHINING CENTERS**



**1996**

**OKK MDL. G4 GRAPHITE VERTICAL MACHINING CENTER**

**CNC VERTICAL MACHINING CENTERS**

**2008 – MAG/FADAL MDL. VMC 8030HT**, Run Hours 2,254; Table 30" x 82 1/2", Travels: X-80", Y-30", Z-30"; Coolant Through Spindle, 24 Position ATC, CAT 40 Taper, Spindle Speeds 10,000 RPM Max, GE Fanuc Series 18i-MB Control, Wash Down, Air/Oil Spindle, XYZ Scales, Rigid Tapping, Spindle Nose to Table 35.5" Max, MARPOSS MIDA Laser Tool Check System, 15/22.5 HP, Flood Coolant, Flat Panel, Color Monitor, Hennig Chip Conveyor, S/N 012007121338

**2008 – MAG/FADAL MDL. VMC 6030HT**, Run Hours 2,570; Table 30" x 62 1/2", Travels: X-60", Y-30", Z-30"; Coolant Through Spindle, 24 Position ATC, CAT 40 Taper, Spindle Speeds 10,000 RPM Max, GE Fanuc Series 18i-MB Control, Wash Down, Air/Oil Spindle, XYZ Scales, Rigid Tapping, Spindle Nose to Table 35.5" Max, MARPOSS MIDA Laser Tool Check System, 15 HP, Hennig Chip Conveyor, S/N 012007121338

**2007 – MAG/FADAL MDL. VMC 6030HT**, Run Hours 3,124; Table 30" x 62 1/2", Travels: X-60", Y-30", Z-30"; Coolant Through Spindle, 21 Position ATC, Dual Arm Tool Changer, CAT 40 Taper, Spindle Speeds 10,000 RPM Max, GE Fanuc Series 18i-MB Control, Wash Down, Air/Oil Spindle, XYZ Scales, Rigid Tapping, Spindle Nose to Table 35 1/2" Max, MARPOSS MIDA Laser Tool Check System, 15 HP, Remote MPG Fanuc, Color Monitor, Hennig Chip Conveyor, S/N 012007071031

**(2) 1997 – FADAL MDL. VMC 6030HT**, Table 30" x 62 1/2", Travels: X-60", Y-30", Z-30"; 21 Position ATC, CAT 40 Taper, Spindle Speeds 10,000 RPM Max, Fadal 32MP CNC Control, High Speed CPU, Graphics, Extended Memory (422K), XY Scales, 15 HP Baldor Vector Drive, S/N 9710481, 9709106

**1997 – FADAL MDL. VMC 4020HT**, Table 20" x 48", Travels: X-40", Y-20", Extended Z-28"; 21 Position ATC, CAT 40 Taper, Spindle Speeds 10,000 RPM Max, Fadal Mdl. 32MP CNC Control, 4th Axis Prewire, Extended Memory (166K), Graphite Restraint Package, S/N 9701052

**1996 – FADAL MDL. VMC 4020HT**, Table 20" x 48", Travels: X-40", Y-20", Z-28"; 21 Position ATC, CAT 40 Taper, Spindle Speeds 10,000 RPM Max, Fadal Mdl. 32MP CNC Control, 4th Axis Prewire, Extended Memory (422K), Graphite Restraint Package, S/N 9609373

**SUPERMAX MODEL YCM-VMC60A 3-AXIS CNC VERTICAL MACHINING CENTER** with 16-pos. automatic tool changer, table size 13" x 36", 24" x 16" x 18" travels, speeds to 6000 rpm, Fanuc 0M CNC control, S/N 10313

**OKUMA & HOWA MILLAC 55V 3-AXIS CNC VERTICAL MACHINING CENTER** with 24 pos. automatic tool changer, table size 55.1" x 24", 51.1" x 24.1" x 22.1" travels, speeds to 4000 rpm, GE Fanuc 16M CNC Control, S/N 6068

**CNC GRAPHITE VERTICAL MACHINING CENTERS**

**1998 – OKK MDL. DGM-400**, Travels: X-22", Y-16", Z-16", Neomatic Mdl 635 CNC Control, Table 17.72" x 30.2", Spindle Speeds 20,000 RPM Max; 16 Position ATC, Soft Scale II, 30 Taper; Daikin Mdl. AKS-100T-D46-C Spindle Head Cooling Unit, Brone Transformer, S/N 103-MA98306

**(2) 1996 – OKK MDL. G4**, Travels: X-19.7", Y-15.7", Z-11.8"; Table 17.5" x 23.6", Spindle Nose to Table 15.75" Max, Spindle Speeds 100 – 15,000 RPM Max, 6 Position ATC, Fanuc Mdl. 16M Control, 30 Taper, Transformer, S/N 118-MA 89808 & 113-MA 89806



**1999**  
TECHNI DRILL CNC GUN DRILL



**1998**  
XERMAC MDL. X54ST CNC EDM



OLOFSSON  
MODEL 1275-M  
CNC VERTICAL  
TURNING  
CENTER



DEVLIEG SPIRAMATIC JIGMILL



UNIVERSAL ADJUSTABLE HEADS

**OVER 450 PIECES OF CAT 50, CAT 40 & 30 TAPER TOOLING HOLDERS**



**CNC VERTICAL TURNING CENTER**

**OLOFSSON MODEL 1275-M CNC VERTICAL TURNING CENTER**, 24" max. swing, 15" 3-Jaw Chuck, 4-Pos. Sauter turret, 7" X-travel, 12" Z-travel, 30 HP Motor, 3000 rpm, Fanuc 15T CNC control, S/N 13635, New 1992

**TOOLING/MILLING HEADS/ANGLE PLATES**

(2) **ALBERTI MDL. TCU 3,5 UNIVERSAL/ADJUSTABLE ANGLE HEADS**, CAT 40; 4,000 RPM, Adjustment 0 – 90 Degrees, Output 20 mm Dia, S/N 96380003 & 04380032

(2) **ALBERTI MDL. TCU 2,5 UNIVERSAL/ADJUSTABLE ANGLE HEADS**, CAT 40; 4,000 RPM, Adjustment 0 – 90 Degrees, Output 16 mm Dia, S/N 99280008 & 96280018

**MST/TECNARA MDL. 150-171-8 UNIVERSAL ADJUSTABLE ANGLE HEAD**, Max RPM 3,000; S/N 436

**PIBOMULTI HIGH SPEED SPINDLE, MDL. TR300**, TYPE X1205, Max RPM 12,000

**KENNAMETAL MDL. 74RAH**; KENNAMETAL CODE J9800066, S/N 9A3319/004; KENNINGER MDL. HG, TYPE U16, No 6271

**OVER 450 PIECES OF CAT 50, CAT 40 & 30 TAPER TOOLING HOLDERS** – HPI AMERICA/PRECISION COMPONENTS/NIKKEN

(10) **LISTA TWO SIDED STORAGE UNITS W/CABINET & TOOLING STORAGE**

**ANGLE PLATES, RISER PLATES, LAYOUT PLATES, ROTARY BASE, (15) KURT 6" VISES; ROTARY TABLES; TOOLING STORAGE CARTS**

**CNC GUN DRILL**

**1999 – TECHNI-DRILL, MDL. 100-1.25-60-3A**, Capacity 1 1/4" Diameter x 42" Stroke 60", Vertical Travel 60", Table 60" x 84", Techni Drill Mdl TDS-3000 CNC Control, 15 HP, Turbo Chip Conveyor, S/N 7184-03/99

**DRILLS** – diameter to .1185" – 1 1/16"

**HORIZONTAL BORING & MILLING MACHINE**

**DEVLIEG SPIRAMATIC JIGMILL** Horizontal Boring Milling & Drilling Machine, MDL. 4K96, Table 40" x 96", Spindle Bar 4", Longitudinal Table Travel 96", Vertical Travel 60", 3-Axis Acu-Rite DRO, Frostrode Spindle Refrigeration Unit, S/N 9444

**CNC EDM**

**1998 – XERMAC MDL. X25ST CNC SINKER TYPE EDM**, Table 24" x 42", Platen 10" x 12", Tank 31" x 49", Xermax CNC Control, Turmoil Mdl. CFX100 Oil Cooler, Pyro Chem Fire Extinguisher System, S/N 305

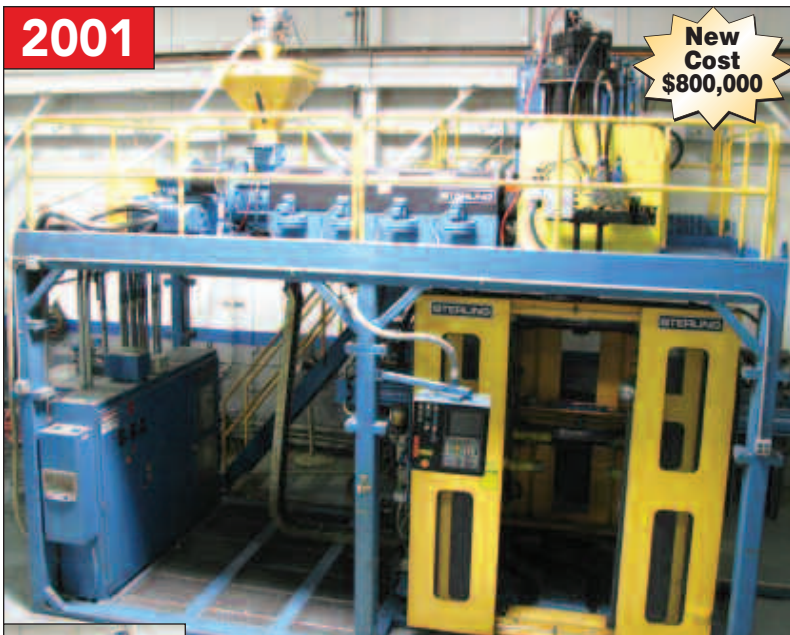
**1998 – XERMAC MDL. X-54ST CNC SINKER TYPE EDM**, Table 34" x 66", Platen 10 1/2" x 12", Tank 40" x 80", Turmoil OC-100R Closed Loop Oil Cooler, Intercolor CNC Control

**1998 – XERMAC MDL. XP-20SZ CNC SINKER TYPE EDM**, Table 14" x 26", Platen 10 1/2" x 12", Tank 25" x 46", Baldor TSD Single Axis Control, Mdl. FX100 EDM Power Supply, S/N 527

**XERMAC SINKER TYPE EDM**, Table 9" x 42", Platen 7" x 10", Tank 22" x 44", XERMAC Mdl. HP-60 Control, 2-Axis Readout, S/N 646

**EROWA EDM TOOLING & CHUCKS**, Work Plates w/Erowa Chucks





**2001**

**New Cost  
\$800,000**



**1500-TON**

**1500 TON VAN DORN INJECTION MOLDING MACHINE**



**STERLING BLOW MOLDING MACHINE**

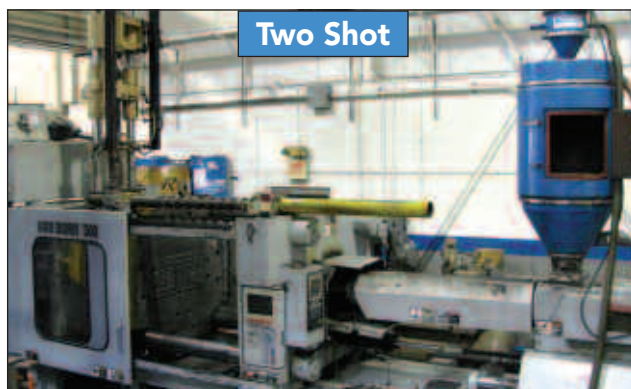


**RAPID GRANULATOR W/SOUND ENCLOSURE & FOREMOST GRANULATOR**



**150-TON**

**150 TON VAN DORN INJECTION MOLDING MACHINE**



**Two Shot**

**500 TON VAN DORN INJECTION MOLDING MACHINE**

**BLOW MOLDING**

**2001 – DAVIS STANDARD/STERLING BLOW MOLDING MACHINE, DUAL HYDRAULIC CORE; DAVIS STANDARD MDL. 350 24:1 EXTRUDER, 4 Zone, Extruder Barrel 3 1/2" x 24:1, 100 HP Reliance Drive; 100 HP Hydraulic Press w/ 15 Lb. Shot Size Accumulator Head, Platen 69" x 56", Between Posts 48" x 56", Rollout Press, Speed 1200 IPM, Stroke 10", Daylight 56", 40 HP Motor & Hydraulic Pump; MACO Series 6000/6500 Blow Molding Microprocessor Control; Novatec Mdl. VL-4 Vacuum Loader, S/N 5259; DAVIS STANDARD S/N 71186**

**IAMCO/STERLING MDL. B-30 30 TON BLOW MOLDING MACHINE, 3 1/2 Lb. Shot Size Accumulator Head, Barber Colman/MOOG-Bloc 64 PRG Control, Platen 30" x 24", Max Opening 32 1/4", 75 HP Motor & Hydraulic Pump, STERLING S/N Z-808-P-0084; 1994 – NPH 400 Lb Capacity Material Hopper; NOVATEC Mdl. VL-3 Vacuum Loader, S/N VL3-4-197**

**DIE HEAD TOOLING – STERLING SEGMENTED TOOLING: 3"-6"; 7"-11"; 12' – 14"**

**BUCKEYE POWERED SMC SHEET FEEDER, Feed Rolls 63" Wide, Pneumatic Hold Downs, 1 HP, S/N 0301121530**

**INJECTION MOLDING MACHINES**

**1500 TON VAN DORN, MDL. 1500H-RS-165-FLP, Dual Core Pull, Horizontal Type, Capacity 165 Ounce, Clamp Stroke 60", Screw Stroke 21", Platens 96" x 75", Between Posts 72" x 52", Max Opening 73", Pathfinder Control, Hydraulic Clamp, 125 HP & 75 HP Hydraulic Unit, S/N 203**

**500 TON VAN DORN / DEMAG, MDL. 500HP-60, Core Pull, Horizontal Type, Capacity 60 Ounce, Clamp Stroke 42", Screw Stroke 14 3/4", Platens 47" x 47", Between Posts 32 1/2" x 32 1/2", Max Opening 47 1/2", Pathfinder Control, Hydraulic Clamp, TWO SHOT – CINCINNATI MILACRON 8 Ounce Injection w/Camac VSX Control, Breathe Cycle; VAN DORN S/N 0819; LOT 106**

**INJECTION MOLDING MACHINES (CONT'D)**

**150 TON VAN DORN, MDL. 150-RS-8F, Horizontal Type, Capacity 8 Ounce, Clamp Stroke 28", Screw Stroke 7 3/4", Between Posts 15 1/2" x 18", Max Opening 28", Pathfinder Control, Toggle Clamp, 20 HP Hydraulic Unit, S/N 41-1781**

**TWO SHOT – CINCINNATI MILACRON 8 Ounce Vertical Injection Unit, S/N 3850A01/98-06**

**PLASTICS ANCILLARY EQUIPMENT**

**1998 – FOREMOST GRANULATOR, MDL. AHD-2, Opening 13" x 12", S/N 39663**

**RAPID GRANULATOR, Type 1224C, 25 HP Motor, Opening 10" x 24", S/N 60.1550**

**DEHUMIDIFYING DRYERS: PNEUTECH MDL. AD-250, Cap. 250 SCFM, S/N 9810-T130289P-ST & WHITLOCK MDL. DB300RT, S/N 8510056**

**AEC 800 LB. MATERIAL HOPPER; NOVATEC VACUUM LOADER; TEMPERATURE CONTROLLER: AQUATHERM MDL. RAD091004, S/N 80210029707**

**HOT RUNNER CONTROLS: AMERICAN MSI CORP MDL. V24-ORN-24, 24 ZONE, S/N 200016 & (2) DME MDL. MFP-12-G 12 ZONE, S/N 8804**

**OSCO 12 STATION MOLD TEMPERATURE CONTROLLER**

**THERMAL CARE MDL. RA090804 THERMOLATOR, s/n 13780079809**

**SEELYE ELECTRIC PLASTIC WELDER**

**(2) DRADER INJECTIWELD GUNS, MDL. W2000**

**VIBRA SEAL MDL. HVS500 ULTRASONIC Hand Held Sealer, 500 Watts, S/N 19919D**

**HEAT BANDS, THERMOCOULPERS, DIE CLAMPS, EJECTOR RODS**

**WATER CIRCULATION SYSTEM • HYDRAULIC SPOTTING PRESS • MOLDING PRESS INSPECTION  
VERTICAL MILLS • GRINDERS • RADIAL ARM DRILLS • CRANES**

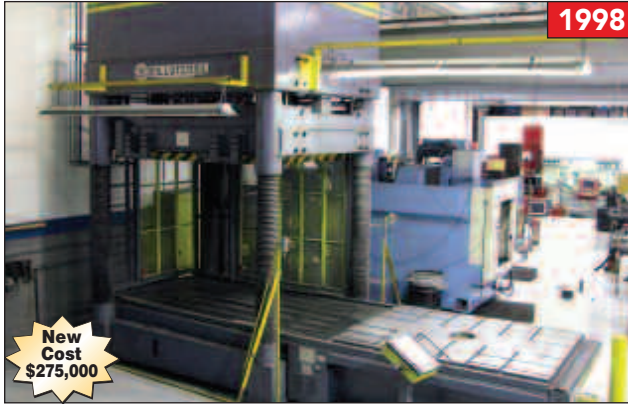
**AUCTION #1 • August 18  
RADIANCE MOLD & ENGINEERING**



**2001**

**New Cost  
\$800,000**

**1500 TON PHI COMPRESSION MOLDING PRESS**



**1998**

**New Cost  
\$275,000**

**165 TON MILLUTENSIL HYDRAULIC SPOTTING PRESS**



**MT.CLEMENS 7.5 TON & 3.5 TON CRANE CELL**



**15 TON MICHIGAN CRANE CELL**



**BRIDGEPORT VERTICAL MILL & 2005 KBC VERTICAL MILL**



**VIEW OF QUALITY INSPECTION**



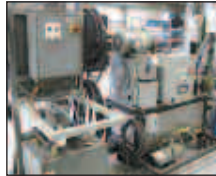
**50 HP QUINCY AIR COMPRESSOR**



**MILLER WELDERS**



**POLI CMM**



**HYDRAULIC & HYDRO MOLD TESTERS**



**BRIDGEPORT/HARIG 618 SURFACE GRINDERS**



**BRIDGEPORT ROMI TORMAX ENGINE LATHE**

**WATER CIRCULATION SYSTEM**

**AEC CLOSED LOOP 800 GALLON WATER CHILLING SYSTEM, AEC PUMP TANK MDL. 666,** Dual Pump, S/N 75C176 w/AEC Chilling Unit & Chem Aqua Chemical Pump Mdl. TWC500E, S/N 15049069901  
**AEC PORTA-KOOL II SERIES** Portable Water Chiller  
**AEC THERMAL CARE MDL. TWC-500E,** Inhibitor, S/N 15049069901

**HYDRAULIC SPOTTING PRESS**

**1998 - 165 TON MILLUTENSIL, MDL. MIL203,** Rolling Bolster 59" x 79", Area Between Posts, 65" x 84", Stroke 47", Daylight 67", Down Acting, Swing-Down Platen, Siemens Mdl. COROS OP5 Control, S/N M885-203025

**HYDRAULIC COMPRESSION MOLDING PRESS**

**2001 - 1500 TON PHI, UP-ACTING,** Sliding Bolster 124" x 100", Stroke 50", Daylight 96", Riser Block 115" x 86" X 22 1/2" H, Six Core / Six - 16" Bore Diameter Cylinders, 3-Stage Degassing Cycle, 120 PSI Steam Generator, Safety Bars, Allen Bradley Panelview 600 Control

**REIMERS ELECTRIC BOILER, MDL. RHP-250,** 150 PSI Steam Generator for Heating Molds, Water Softener, S/N 0101-58359

**VAC CUBES MDL. 188L MANIFOLD MOUNTED VACUUM GENERATOR SYSTEM**

**INSPECTION**

**HYDRAULIC & HYDRO MOLD TEST UNITS: 7.5 HP,** Vickers Pump Mdl. PV010 A2R SSIS 20

**POLI COORDINATE MEASURING MACHINE, MDL. P2500,** Cantilever Type, Travels: x-76", Y-60", Z-60"; Height Under Probe 60", Granite Plate 60" x 98" x 12", Renishaw MH8 Probe, Computer, Printer, S/N 230456N

**STARRETT GRANITE PLATES: 48" x 72" x 8" Pink; (2) 48" x 96" x 14"; 48" x 96" x 10"; 48" x 72" x 8" Pink; 36" x 72" x 10"; 36" x 60" x 6";**

**STEEL LAYOUT PLATES: 48" x 72"**

**MITUTOYO Precision Check Master, Series 515-742, No 710138**

Refractometer; Panametrics Ultrasonic Thickness Gauge; Mitutoyo Vernier Calipers; Starrett Vernier Calipers; Pin Gauge Sets – Imperial & Metric

**ENGINE LATHES**

**1994 - TOS MDL. SN50C,** Swing 20", Centers 80", Tail Stock, Cross Slide, Steady Rest, 10" Diameter 3-Jaw Chuck, Hole Through Spindle 2 1/4", S/N 940650202859

**BRIDGEPORT/ROMI, MDL. TORMAX 13-5,** Swing 13 1/2", Centers 42", Tail Stock, Cross Slide, Steady Rest, 8" Diameter 3-Jaw Chuck, Hole Through Spindle 1 3/4", Inch/Metric, S/N \_\_\_\_\_

**VERTICAL MILLS**

**(5) LATE AS 1999 - BRIDGEPORT SERIES 1,** Table 9" x 48", 2 HP Motor, Power Feed Table, Quill Travel 5", 2-Axis DRO, S/N BR277995, BR 276226, BR219694, BR217690, BR188162  
**(2) 2005 - KBC MDL. TUM3VS,** Table 10" x 50", Quill Travel 5", Power Feed Table, Mitutoyo 2-Axis DRO, S/N 053757 & 053763

**GRINDERS**

**(2) DECKEL, MDL. SO** Single Lip Bench Type Tool Grinder, S/N 87-23448 & 77-17939  
**(2) BRIDGEPORT/HARIG SURFACE GRINDERS, MDL. 618,** Electromagnetic Chuck 6" x 18"  
**REID SURFACE GRINDER, NO. 2C,** Drill Point Attachment, Hyper Tool Mdl LF Gun Drill Sharpening Fixture, S/N 5599

**UNITED GRINDING SHAPING FIXTURE, MDL. LF,** S/N 021703

**(3) LATE AS 1999 - WESTHOFF MDL. WM 100-1 BENCH TOP HORIZONTAL DRILLING MACHINES,** Work Table 8 1/2" x 8 1/2", Horizontal Travel 12", Vertical Head Travel 4 1/2", S/N 991722, 971582 & 90-854H

**RADIAL ARM DRILLS**

**CINCINNATI BICKFORD SUPER SERVICE,** Col. Dia. 13", Arm Travel 5', Box Table, S/N 3NE-55  
**AMERICAN HOLE WIZARD,** Col. Dia. 11", Arm Travel 4', Box Table, S/N 71596

**CRANES**

**15 TON MICHIGAN CRANE CELL,** Cell Width 38' x Length 90', 15 Ton Hoist & 7.5 Ton Hoist, Dual Girder, Top Riding, Pendant Control, Two Speed, S/N 99-5024

**10 TON MT. CLEMENS BRIDGE CRANE CELL,** Cell W:35' x L:150', Class C, DeMag 10 Ton Hoist, Dual Girder, Top Riding, Pendant Control, Two Speed

**7.5 TON MT. CLEMENS BRIDGE CRANE CELL,** Cell W:18' x L:150', Class C, DeMag 7.5 Ton Hoist & DeMag 3.5 Ton Hoist, Dual Girder, Top Riding, Pendant Control, Two Speed

**5 TON MT. CLEMENS BRIDGE CRANE CELL,** Cell W:18' x L:150', Class C, DeMag 5 Ton Hoist, Single Girder, Underhung, Pendant Control, Two Speed

**20,000 LB. DILLON** Crane Scale, Division 100 Lbs.

**(11) 2 TON COFFING Hoists • Bundle Grabber Attach.; Rigging Chains; I-Bolts; Magnetic Lifts**

**LODGING FOR RADIANCE MOLD & ENGINEERING**  
**CHESTERFIELD MOTOR INN** HOLIDAY INN EXPRESS HOTEL & SUITES  
 50900 GRATIOT AVE, 45825 MARKETPLACE BLVD  
 CHESTERFIELD, MI 48051 CHESTERFIELD, MI 48051  
 PHONE: 586-949-9110 PHONE: 586-598-4000

**DIRECTIONS TO RADIANCE MOLD & ENGINEERING:**  
 Exit Detroit – Metropolitan Airport to I-94 Eastbound. Travel east on I-94 for 42 miles to Exit #240A (M-59 East & Selfridge Air Force Base). Follow exit & turn right onto M-59 / William P Rosso Hwy. Travel east on William P Rosso Hwy for 1 mile to Kehrig Dr. Watch for Auction signs & turn left onto Kehrig Dr. – follow to plant.



**ROLLING STOCK**

**1999 – MACK TANDEM AXLE DELIVERY TRUCK, MDL. RD688S,** MACK Premium Chassis, Miles 229,295; Day Cab, Trailer 18' Long, Retractable Tarp, VIN 1M2P270CXXM046039

**2005 – CHEVROLET EXPRESS VAN,** Automatic Transmission, A/C, Two-Seat, Miles 104,180; VIN 1GCHG39UX51168199

**CHEVROLET STAKE TRUCK, MDL. GMT,** Automatic Transmission, A/C, Dual Wheel, Miles 196,440; Stake Bed 14' Long, VIN 1GBKC34F8VJ114849

**2000 - HOIST FORKLIFT, MDL. F160,** Capacity 16,000 Lbs, LPG, Lift 140", 3-Stage, 90 HP, Forks 72", Back Tilt 7 Degrees, S/N 27146

**(2) 1999 - TOYOTA FORKLIFT, MDL. 7FGU25,** Capacity 5,000 Lbs, LPG, Lift 189", 3-Stage, Side Shift, S/N 62766 & 62753

**KOMATSU FORKLIFT, MDL. FG 2ST-11,** Capacity 4,500 Lbs, LPG, Lift 188", 3-Stage, Side Shift, S/N 300398A

**CLARK FORKLIFT, MDL. CGC25,** Capacity 4,600 Lbs, LPG, Lift 189", 2-Stage, Side Shift, 90 HP, S/N C365L-0242-9452FB

**HERCULES MDL. 6869 FORKLIFT ATTACHMENT,** Capacity 6,000 Lbs Hoist;

**SCHUMACHER ELECTRIC BATTERY CHARGER** for 6 & 12 Volt Batteries

Pallet Jacks, Barrel Carts, Presto Power Platform Lift

**AIR COMPRESSORS**

**(2) 50 HP QUINCY AIR COMPRESSOR, MDL. QMA50ACA31J,** S/N 74781 & 74463

**25 HP LEROI AIR COMPRESSOR, MDL. CUB-25,** S/N 4225x1038

**PNEUMATECH AIR DRYER, MDL. AD-250,** 250 SCFM, S/N 9910-T132308P-ST

**ULTRA AIR DRYER, MDL. UA100AC,** S/N U-14344-1

**ACE AIR DRYER, MDL. CK-1.5A,** S/N 611143

(2) Air Receiver Tanks

**WELDERS**

**MILLER MDL. SYNCROWAVE 351 AC/DC WELDER,** Miller Coolmate 4 Cooling System

**MILLER MDL. 330 ABP AC/DC ARC WELDER,** Coolmate 4 Cooling System

**MILLER Radiator 1A Cooling System**

**WELDING TABLES**

**SAWS**

**1999 – SPARTAN/MARVEL HORIZONTAL BAND SAW, MDL. PA 13N,** Capacity 13" Round / 13" x 14" Rectangle, 5 HP Motor, Power Clamp, Roller Conveyor, S/N EPA 130556

**1994 – POWERMATIC MDL. 143 VERTICAL BAND SAW,** Capacity 14", S/N 9443094

**(3) 1995 – DELTA MDL. 28-203 VERTICAL BAND SAWS,** S/N 94L98361, 95J88431 & 93B97940

**KIMASTLE METAL PANEL SAW**

**MOAK VERTICAL BAND SAW, MDL. 36,** Capacity 36", Tilt Table 32" x 32", S/N 10347

**TANNEWITZ VERTICAL BAND SAW,** Capacity 36", Tilt Table 36" x 36", 7.5 HP Motor

**KALAMAZOO COLD SAW**

**WOODWORKING EQUIPMENT**

**PANEL SAW – MILWAUKEE 8" HEAVY DUTY SAW,** Catalog 6480 on Panel Support

**1986 - ZIMMERMAN TYPE FZ1/K DRILL,** Table 42" x 72", Collet Attachment, Nr. 114

**STATE 24" DISC SANDER, MDL. D24,** S/N 923

**STATE 20" DISC SANDER, MDL. D20,** S/N H2574

**COMET 20" DISC SANDER, MDL. DS-20"**

**STATE OSCILLATING SANDER, MDL. T-5,** Table 27" x 42", S/N 470

**DELTA TILTING TABLE SAW, MDL. 34-802,** UNISAW, Capacity 10", S/N 94B96753



**1999**  
MACK TRUCK



**2005**  
CHEVROLET EXPRESS VAN



DELTA VERTICAL BAND SAWS



KIMASTLE METAL PANEL SAW



**2000**  
16,000 LB HOIST, CLARK & TOYOTA FORKLIFTS



LEATHER SOFA



CONFERENCE TABLE



**1999**  
SPARTAN/MARVEL HORIZONTAL BAND SAW

**OFFICE EQUIPMENT**

**DELL POWEREDGE 2850 SERVER, POWERVAULT 114T SUBSYSTEM,** Enclosure

**PANASONIC MDL. TVS 200 VOICE PROCESSING SYSTEM, NO. KX-TV5220; PANASONIC 8EXT SUPER HYBRID PHONE SYSTEM;** Music On Hold Module;

**TOSHIBA REGZA Flat Screen Television; SONY VCR;**

**(2) HP DESIGN JET COLOR PLOTTERS, MDL. 1050C; OMNI 120E Plotter; APC Back-Up Units;**

**(2) TOSHIBA ESTUDIO35 MDL. EST35 Photocopiers; CANON Image Runner 330S Copier**

**OFFICE COMBINATION SAFE**

Conference Tables; Illuminated Print Tables; Workstations; Office Partitions; Desks; Chairs; Personal Computers; HP Laser Jet Printers; Scanners; Refrigerator; HON Filing Cabinets; Leather Sofa

**OEM REPLACEMENT PARTS**

**OILGEAR Gear Box**

**HYDRAULIC & PNEUMATIC CYLINDERS: PARKER/YATES/BIMBA/FABCO/AIR PRODUCTS**

**MISCELLANEOUS**

**(2) PARKER Portable Hydraulic Pump Units, Mdl. 10MF40SA 10C 1X853006, S/N 6 • LARGE QTY ALUMINUM BAR & PLATE; BRASS; • FROSTRODE Spindle Refrigeration Unit • CNC Control Consoles, Down Time PPlus Control • BAR & PLATE STORAGE RACKS • SWENSON Plate Shear • BLAST BOOTH W/ CYCLONE; FASBLAST MEDIA • Electric Curing Oven, Panel Size 108" x 128", Infrared, Allen Bradley Panelview 550 Control • (2) MILWAUKEE MAGNETIC DRILLS; REMINGTON 16" Electric Chain Saw, 3.5 HP; DEWALT MDL. DW350 RECIPROCATING SAW; • 1996 - ACR A BENCH GRINDER, MDL. PP80BG8, S/N 8060046 • SIGNODE STRAPPER • PRESTO POWER LIFT, Capacity 1,500 Lbs, Platform 24" x 36" • PALLET JACKS – Global 11,000 Lb/Crown/Dayton; LOW PROFILE DRUM CADDIES • ROPAK Collapsible Containers: 45x48 & 48x64 • 12 Speed Drill Press, Mdl. MDP-1122-A • Pipe Threader • MARSH Stencil Machine • (3) Transformers: BRONE II; FARGO 34 KVA, Primary 480 V, Secondary 230 V • ZEBRA Mdl. 105 Label Printer • PARKRIMP HOSE CRIMPER, MDL. 80C, S/N 020943 • (2) DONALDSON/TORIT DUST COLLECTOR, MDL. SDF6, RPM 3,450; S/N IG429405-001; 1997 • DCE UNIMASTER TYPE UMA250DG8SF, S/N 97-1518; AERCOLOGY DUST COLLECTOR, MDL. FDV 3000, S/N 37664; AIR FLOW PORTABLE DUST EXHAUST UNIT W/FLEXIBLE ARM; JET 1.5 HP DUST COLLECTOR; • LYON MSII 10-Drawer Storage Cabinet; Steel Storage Shelves • JESCO 3 YARD SELF-DUMPING HOPPER, MDL. 211371 • PATTON MDL. 1010MP INDUSTRIAL FANS, Diameter 28" • Vehicle Lift – Capacity 10 Ton • KANT Twist Fixture Clamps • Steel Die Rack Supports • (40) Steel Rolling Carts • Flammable Storage Units – Wilray • STERLING Electric Scale, Platform 48" x 48", Mdl. 810-N1, S/N 23676; B-Tek Digital Scale, Mdl. BT84-XL, Platform 24" x 24", S/N 2376 • SILTEC Electric Scale • RIDGID 6 HP Professional Shop Vac, Capacity 14 Gallon; CHICAGO Wet/Dry 5 Gallon Shop Vac • STRONG HOLD Cabinet • Werner Extension & Step Ladders to 20' • Magnetic Lifts • Unused Brass Bushings & Fittings • Plastic Stackable Parts Containers • Letter & Number Punch Sets • Pneumatic & Electric Disc Grinders; Drill Doctor Sharpener; Conduit Bender; Fittings • HAND TOOLS: Sledgehammers, Hex Wrench Sets; Adjustable Wrenches; • TOOL & STORAGE CABINETS: HUOT/WATERLOO/LISTA • Cutters;Inserts;Tap & Die Sets; Fastener Storage Units; Containers; Hardware – Nuts/Bolts/Screws/Pins • Pallet Racking – 50" x 120" • Hose Reels • TORO Weed Wacker**

# AUCTION #2

Thursday, August 20th, 2009 • Beginning at 10:00am CDT

21467 Holyoke Ave., Lakeville, MN 55044

PREVIEW: Wednesday, August 19, 9am - 4pm CDT & Morning of Sale

Formerly the Assets of  
**DHY CORPORATION**

# STATE OF THE ART CNC MACHINING FACILITY

**\$1.3 Million  
Replacement  
Cost**



**2005** 1 OF 2

LEBLOND MAKINO A66E 4 AXES CNC HORIZONTAL MACHINING CENTERS



LEBLOND MAKINO PALLET STORAGE & RETRIEVAL SYSTEM FOR MAKINO CELL



**225  
Tool  
Capacity**

TOOLCHANGER FOR LEBLOND MAKINO A66E



PROFESSIONEL 3 CONTROL  
FOR LEBLOND MAKINO A66E

**\$1.3 Million  
Replacement  
Cost**



**2005** 1 OF 2

LEBLOND MAKINO A66E 4 AXES CNC HORIZONTAL MACHINING CENTERS



CONTROLLER  
FOR STORAGE &  
RETRIEVAL  
SYSTEM FOR  
MAKINO CELL



SPINDLE VIEW OF  
LEBLOND MAKINO A66E



(3) PALLET LOADING & UNLOADING  
STATIONS FOR MAKINO CELL

## CNC HORIZONTAL CELL

Including: (2) LEBLOND MAKINO A66E 4-AXES CNC HORIZONTAL MACHINING CENTERS WITH DUAL PALLET CHANGER, 225 Automatic toolchanger, speeds to 14,000 RPM, thru spindle coolant, BTK40 taper, x-axis travel 28.74", y-axis travel 28.74", z-axis travel 31.5", work height 3.15"-31.9", pallet centre to spindle end 2.76"-34.25", pallet size 19.68" x 19.68", table load 1540 lbs, work height 39.37", work diameter 31.5",

loading height 47.24", "B" axis indexing 0.001°, Tool dia. without adjacent tools 6.69", Tool dia. with adjacent tools 2.76", tool length 14.17", tool weight 17.6 lbs., 30 HP drive, (24) MMC2 tombstone and pallet storage retrieval system w/ (3) pallet loading & unloading stations, Abbott tombstones, oil mist collector, oil cooler, MC700 Renishaw probe system, Automatic chip conveyor, Makino professional 3 controls, S/N 91 & 130, new 2005



**(3) CNC HORIZONTAL MACHINING CENTERS**

**MATSUURA MAM-500HF-PC-2, 4-AXES CNC HORIZONTAL MACHINING CENTER WITH DUAL PALLET CHANGER,** speeds 30-8000 RPM, BT 40, hi-pressure coolant, "B" axis by 1°, 60 automatic toolchanger, chip conveyor, x-axis travel 19.69", y-axis 18.5", z-axis 17.72", work height 1.57"-20.08", pallet size 11.8" x 11.8", pallet weight capacity 660 lbs., Yasnac i80 Control with port, S/N 950211218, new 1995



**MATSUURA MAM-450H-30-PC11 CNC HORIZONTAL MACHINING CENTER**

**MATSUURA 450H-30-PC11, 4-AXES CNC HORIZONTAL MACHINING CENTER WITH 11 PALLET CHANGER,** 60 automatic tool changer, BT40 taper, pallet size 11.8" x 11.8", x-axis 17.7", y-axis 15.7", z-axis 15.7", "B" axis by 1°, 15 HP drive, speeds to 6000 RPM, S/N 910509575, new 1991

**HYUNDAI, SPT-V30TD CNC HORIZONTAL MACHINING CENTER,** Table Size (2) 23.6" x 35.4", x-axis 19.68", y-axis 11.81", z-axis 11.81", Spindle Taper #30, Speeds 8000 RPM, # of tools 14 S/N 45019022

*To be sold via photo, Located in Rockport, MA*



**CONTROLLER**



**PALLET CHANGER**



**MATSUURA MAM-450H-30-PC11  
CNC HORIZONTAL MACHINING CENTER**

**(23) CNC VERTICAL MACHINING CENTERS**

*(SEE PHOTOS ON PAGE 10)*

**CHIRON DZ12W, 3-AXES, 2 SPINDLE CNC VERTICAL MACHINING CENTER WITH DUAL 12 AUTOMATIC TOOLCHANGER,** Auto index table, ISO 30 taper, dual pallet changer, x-axis 21.65", y-axis 11.81", z-axis 16.73", table load 484 lbs., Speeds 20-6000 RPM, Fanuc GE O-M control with port, remote generator, S/N 452-09, new 1993

**(4) FADAL VMC40, 3-AXES CNC VERTICAL MACHINING CENTERS WITH 21 AUTOMATIC TOOLCHANGER,** No.40 taper, table size 16" x 39", table load 750 lbs., x-axis 22", y-axis 16", z-axis 20" work height 4"-24", 15 HP, speeds 75-10,000 RPM, airflow oil mist collector, Fadal CNC 88 control with port, Model 904-1, S/N 9206347, 9204181, 9206348, 9200324, new 1992

**(3) MATSUURA RA-1F, 3AXES CNC VERTICAL MACHINING CENTERS WITH DUAL PALLET CHANGER,** 20 Automatic toolchanger, No.40 taper, pallet size 14.9" x 23.6", x-axis travel 20", y-axis 16", z-axis travel 18", speeds to 8000 RPM, 10 HP, Mist collector, Yasnac i80 control with port, S/N 930210181, 930310385, 930310386, New 1993

**(2) MATSUURA RA-1, 3-AXES CNC VERTICAL MACHINING CENTERS WITH DUAL PALLET CHANGER,** 20 automatic toolchanger, No.40 taper, 5 HP Drive, oil mist collector, flood coolant, pallet size 14.9" x 23.6", table load 550 lbs., x-axis travel 20", y-axis travel 15.7", z-axis travel 18.1", work height 5.9"-24", Yasnac MX3 control with port, 5 HP, S/N 910509337 & 910509328, new 1991

**MATSUURA RA-11-DC, 2-SPINDLE 3-AXES CNC VERTICAL MACHINING CENTER WITH DUAL PALLET CHANGER,** Dual 30 automatic tool changer, BT40, speeds to 8000 RPM, x-axis 23.6", y-axis 16.1", z-axis 18.5", Yasnac MX3 control, S/N 880506762, new 1988

**(4) KITAMURA MYCENTER 1, 3-AXES CNC VERTICAL DRILLING CENTERS WITH 20 AUTOMATIC TOOLCHANGER,** No.35 Taper, Speeds 300-12000 RPM, Dual pallet changer, table size 11.8"x19.7", table load 176 lbs., x-axis 19.1", y-axis 13", z-axis 16", work height 5"-21", automatic chip conveyor, 7 1/2 HP., Tri-Mist oil mist collector, Fanuc O-M Control, S/N 02583, 025P4, 02585, 02572, New 1992

**MATSUURA, MC 500 V2 DC CNC VERTICAL MACHINING CENTER,** Table Size 15" x 34", x-axis 20", y-axis 14", z-axis 17.7", Spindle Taper #35, Speeds 6000 RPM, # of tools 20, Spindle Spread 12, YASNAC Control, S/N 8403 3755, Year 1994

*To be sold via photo, Located in Hampton, NH*



**CONTROLLER**

**MATSUURA  
MAM-500HF-PC-2  
CNC  
HORIZONTAL  
MACHINING  
CENTER**

**1995**

**MATSUURA, MC 500 V2 DC CNC VERTICAL MACHINING CENTER,** Table Size 15" x 34", x-axis 20", y-axis 14", z-axis 17.8", Spindle Taper #35, Speeds 6000 RPM, # of tools 20, YAS MX-1 Control, S/N 8305 3223, Year 1993

*To be sold via photo, Located in Hampton, NH*

**MATSUURA, MC 500 V2 CNC VERTICAL MACHINING CENTER,** Table Size 15" x 34", x-axis 20", y-axis 14", z-axis 17.7", Spindle Taper #35, Speeds 6000 RPM, # of tools 20, Spindle Spread 12, YASNAC Control, S/N 8406 4150, Year 1985

*To be sold via photo, Located in Hampton, NH*

**MATSUURA, MC 500 V2 CNC VERTICAL MACHINING CENTER,** Table Size 15" x 34", x-axis 20", y-axis 14", z-axis 17.7", Spindle Taper #35, Speeds 6000 RPM, # of tools 20, YASNAC Control, S/N 8306 3336, Year 1983

*To be sold via photo, Located in Hampton, NH*

**(2) FADAL 4020 CNC VERTICAL MACHINING CENTER,** Table Size 47" x 20", x-axis 40", y-axis 20", z-axis 20", Spindle Taper #40, Speeds 10,000 RPM, # of tools 30, S/N's 9911417 & 9704650 *To be sold via photo, Located in Rockport, MA*

**FADAL 3020 CNC VERTICAL MACHINING CENTER,** Table Size 40.5" x 20", x-axis 30", y-axis 20", z-axis 24", Spindle Taper #40, Speeds 10,000 RPM, # of tools 24, S/N 9902364 *To be sold via photo, Located in Rockport, MA*

**FADAL 3016 CNC VERTICAL MACHINING CENTER,** Table Size 39" x 16", x-axis 30", y-axis 16", z-axis 20", Spindle Taper #40, Speeds 7000 RPM, # of tools 21, S/N 9611658 *To be sold via photo, Located in Rockport, MA*



# CNC VERTICAL MACHINING CENTERS

1993



CHIRON DZ12W 2-SPINDLE CNC VERTICAL MACHINING CENTER



CONTROL FOR  
CHIRON DZ12W  
CNC VMC



CONTROL FOR FADAL VMC40



FADAL VMC40 CNC VERTICAL MACHINING CENTER

1992

1 OF 3

1993



MATSUURA RA-1F CNC VMC



CONTROL FOR  
MATSUURA  
RA-1F CNC  
VMC

1 OF 3



MATSUURA RA-1 CNC VERTICAL MACHINING CENTER

1991

1 OF 2



CONTROL  
FOR  
MATSUURA  
RA-1 CNC  
VMC

CONTROL  
FOR  
KITAMURA  
MYCENTER 1  
CNC  
MILLING  
CENTER



MATSUURA RA-11-DC 2-SPINDLE CNC VERTICAL MACHINING CENTER



CONTROL FOR  
MATSUURA  
RA-11-DC  
CNC VMC



MATSUURA RA-11-DC 2-SPINDLE CNC VERTICAL MACHINING CENTER

1992

1 OF 4



KITAMURA MYCENTER 1 CNC VERTICAL MILLING CENTER



FADAL  
4020 CNC  
VERTICAL  
MACHINING  
CENTER



MATSUURA  
MC 500 V2  
CNC VERTICAL  
MACHINING CENTER





**1992**

**NAKAMURA-TOME TW-20MM DUAL SPDL.  
CNC TURNING/MILLING CENTER**



**CONTROL FOR  
NAKAMURA-TOME  
TW-20MM**



**As New As  
2001**

**TECHNO WASINO  
A8 CNC  
TURNING/  
MILLING  
CENTER**

**1 OF 2**



**CONTROL FOR  
TECHNO WASINO A8**



**1996**

**LNS MINI SPRINT 52  
HYDRAULIC BAR FEED**



**HARDINGE SUPER PRECISION GANG TYPE  
CNC CHUCKER**



**1996**

**1996  
CITIZEN  
CINCOM  
E32 CNC  
AUTOMATIC**



**CONTROL FOR  
CITIZEN CINCOM E32**



**SMW HYDRAULIC  
BAR FEED**



**1994**

**CITIZEN CINCOM E32 CNC AUTOMATIC**



**CONTROL FOR  
CITIZEN CINCOM E32**



**1992**

**MITSUBISHI DWC-90SB 4AXES CNC WIRE EDM**



**1991**

**FANUC CUT A-OA 4AXES CNC WIRE EDM**

**(3) CNC TURNING CENTERS**

**NAKAMURA-TOME TW-20 MM DUAL SPINDLE CNC TURNING/MILLING CENTER.** Dual 12 Station turrets with live tools, Dual 8" Dia. 3-jaw power chucks, C-axis, bar capacity 2", Max. swing 10.63", turning diameter 8.46", max. turning diameter 10.63", max. turning length 7.56", distance between spindle noses 42.5", distance spindle to turret face 4.33", spindle bore 2.56", number of rotary tools 12, speed of rotary tools 48-3600 RPM, main speeds 50-5000 RPM, Hi-Pressure coolant system, Chip conveyor, parts catcher, Luck-BE I Control, S/N 200607, New 1992, with 16' LNS Hydraulic bar feed, type 6.65HS-512, S/N 25222

**(2) TECHNO WASINO A8 SLANT BED 3-AXES CNC TURNING/MILLING CENTERS,** swing 9 1/16", max. work piece size 2" dia x 2"L, Spindle bore 1 9/16", Main speeds 6000 RPM, 5 HP drive, x-axis 3 1/8", z-axis 5 7/8", c-axis .001", 8 station turret with live tools, 5" dia. 2-jaw power chuck, automatic chip conveyor, Speed with live tools x-12000 RPM, z-15000 RPM, Fanuc 21i-T Control, S/N 112, New 1999, S/N 119, New 2001

**CNC GANG CHUCKER**

**HARDINGE SUPER PRECISION GANG TYPE CHUCKER,** (5) tools, 5C hand collet closer, Fagor CNC Control

**(2) CNC AUTOMATICS**

**(2) CITIZEN CINCOM E32 6-AXIS CNC AUTOMATICS,** (2) 10 position turrets, Max. chucking length work 12.6", bar capacity 1 1/4", c-axis, Sub-Spindle, live tools, Main spindle speeds to 6000 RPM, Sub spindle speeds to 5000 RPM, 7 1/2 HP Drive, parts catcher, S/N W6023 new 1994, S/N W6092 new 1996 with LNS Mini Sprint 52 hydraulic bar feed, S/N 46790-96, SMW 15' hydraulic bar feed

**(2) CNC WIRE EDM'S**

**FANUC CUT A-OA, 4-AXIS WIRE EDM,** max. work piece weight 550 lbs., Max. work piece dimensions 15.75" x 11.8" x 5.9", table strokes 11.8" x 7.87", z-axis 6.3", wire diameter 0.2-0.33 mm, filtration system, Fanuc 16-WA Control, S/N 92XOA011, new 1992

**MITSUBISHI DWC-90 SB, 4-AXES CNC WIRE EDM,** Max. work piece dimension 17.7" x 13.78" x 6.69", max. work piece weight 264 lbs., table size 19.5" x 20.9", x-axis 11.8", y-axis 9.84", U/V stroke ± 17 mm, table angle ±12°/60 mm, z-axis 6.89", wire diameter 0.1-0.3mm, filtration system, Futaba Pubscale Cjx 1-axes D.R.O., Mitsubishi Meldas Control w/ port, S/N 0195B205, new 1991



LAGUN 3 HP VERTICAL MILL



HURCO 3 HP VERTICAL MILL



1 OF 2

BRIDGEPORT J VERTICAL MILLS



TAKISAWA MAXTURN 14" X 30" CC LATHE



RAMCO UNOSET UNIVERSAL  
TOOL & CUTTER GRINDER



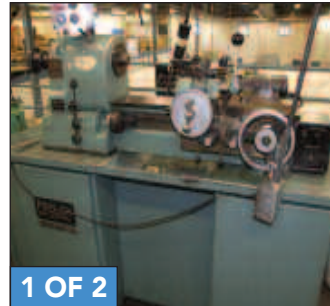
TSUDAKOMA RNCV-200R  
INDEXER



HAAS SRT ROTARY  
INDEXER W/ CONTROL



HAAS 5C ROTARY INDEXER  
W/ CONTROL



1 OF 2

FEELER PRECISION CHUCKERS



VIEW OF SURFACE GRINDERS

## (7) VERTICAL MILLS

**LAGUN 3 HP FTV-1 VARIABLE SPEED VERTICAL MILL**, R-8 taper, 9" x 42" table, speeds to 4200 RPM, Newall C-80 3axes D.R.O., S/N SE-18279

**LAGUN 2 HP FTV-1 VARIABLE SPEED VERTICAL MILL**, R-8 taper, 9" x 42" table, speeds to 4200 RPM, Sony 2-axes D.R.O., S/N SE-189743

**ALLIANT 2HP VARIABLE SPEED VERTICAL MILL**, R-8 taper, 9" x 42" table, power cross feed, speeds to 4200 RPM, OMEGA 1 axis D.R.O., S/N 7212045

**HURCO 3 HP VARIABLE SPEED VERTICAL MILL**, R-8 taper, 9" x 42" power feed table, Speeds to 4000 RPM, Sony 2-axes D.R.O., S/N SA-8038062

**BRIDGEPORT MODEL J, 1 1/2 HP VERTICAL MILL**, R-8 taper, 9" x 42" table, speeds to 2720 RPM, Sony 2-axes D.R.O., S/N 195562

**BRIDGEPORT MODEL J, 1 HP VERTICAL MILL**, R-8 taper, 9" x 42" table, speeds to 2720 RPM, Sony 2-axes D.R.O., S/N 224520

**RUSNOK VERTICAL BENCH TYPE MILL**

## (8) INDEXERS/ROTARY TABLES

(2) HAAS SRT ROTARY INDEXERS w/ servo control

(2) HAAS 5C ROTARY INDEXERS w/ servo control

HAAS LONG STYLE INDEXER w/ end support

TSUDAKOMA RNCV-200R INDEXER

(2) NSK 10" DIA. MANUAL INDEXER

## TOOLROOM LATHE

**TAKISAWA MAXTURN 14" X 30" CC TOOLROOM LATHE**, hard ways, inch/metric threading, speeds 55-1800 RPM, 3&4 jaw chucks, faceplate, steady rest, thread dial, Sony 2-axes D.R.O., S/N BAU800339H, new 1980

## (2) PRECISION CHUCKERS

(2) FEELER PRECISION CHUCKERS, type FH R-68, 5C hand collet closer, hex. Turret, speeds to 2955 RPM, S/N 7R274, 7R277, new 1987

## (2) SURFACE GRINDERS

**BRIDGEPORT 8" X 15" HAND FEED SURFACE GRINDER**, 8" x 15" permanent magnetic chuck

**OKAMOTO 6" X 12" HAND FEED SURFACE GRINDER**, 6" x 12" permanent magnetic chuck, type PFG-612, S/N 2376-U

## TOOL & CUTTER GRINDER

**RAMCO UNOSET UNIVERSAL TOOL & CUTTER GRINDER**, Motorized workhead, S/N 789114

## (8) TOOL GRINDERS AND BUFFERS

6" TABLE MOUNTED SINGLE END BUFFER

KK CALMAR 5" BENCH TYPE CARBIDE GRINDER

BALDOR 6" D.E. PEDESTAL GRINDER

SUNEX 6" D.E. PEDESTAL GRINDER

8" SINGLE END BUFFER WITH STAND

(2) SUNEX 6" D.E. BENCH GRINDERS

BALDOR 6" D.E. BENCH GRINDER

## LAPPER

DO-ALL 20" VERTICAL LAPPER

## (6) DRILLS

**CLAUSING SORBOGA 18" ROUND COLUMN DRILL**, drill chuck, speeds 125-3480 RPM, type 25011, S/N 288373E

**CLAUSING 17" VERTICAL DRILL**, No.2 MT, manual feed, Model 1769, S/N 522120

14" ROUND COLUMN DRILL, manual feed

(2) ZAGAR MULTIPLE SPINDLE PRODUCTION DRILLS w/ (2) horizontal heads, (1) vertical head

CRAFTSMAN 10" BENCH DRILL





DOALL 20"  
VERTICAL  
LAPPER



ZAGER MULTIPLE SPINDLE DRILLS



KALAMAZOO H9AW HORIZONTAL BAND SAW



BERNS  
76-JB-3  
CHAMFERING  
MACHINE



1998

1 OF 2

100 HP GARDNER DENVER AIR COMPRESSORS



ANO-ETECH CLEANING LINE



TOYOTA 3000 LBS.ELECTRIC FORK LIFT W/ SIDE SHIFT



1998

ROYSON 10-CTV VIBRATORY FINISHER



1998

ROYSON 5-CTV-15 VIBRATORY FINISHER W/ POWER LID



SKY JACK II-3220 ELECTRIC SCISSORS  
MAN LIFT

## (2) BAND SAWS

KALAMAZOO H9AW 9" HORIZONTAL BAND SAW, coolant, 1" blade, S/N K22209

CRAFTSMAN 12" VERTICAL BAND SAW

## (2) BELT SANDERS

DAYTON 6" VERTICAL BELT SANDER/ 12" DISC SANDER, type ATJ97

DREMEL 1" VERTICAL BELT SANDER /5" disc sander w/ stand

## (6) PRESSES

ENERPAC FOOT HYDRAULIC H-FRAME PRESS

(2) 3 TON BENCH ARBOR PRESSES

(2) ¼ BENCH ARBOR PRESSES

1 TON BENCH ARBOR PRESS

## SHAFT CHAMFERING MACHINE

BURNS 76-JB-3 CHAMFERING MACHINE, S/NN 76-3-341

## AIR COMPRESSORS AND DRYER

(2) 100 HP GARDNER DENVER ELECTRA SAVER Rotary Screw Air Compressors, skid mounted, Air cooled, Auto Sentry ES control, S/N W05089, new 1994, S/N SO21540, new 1998

PNEUMATECH ADW-500 AIR DRYER, S/N 0411-TR984557P-049774R

## CLEANING LINE

UNO-ETECH CLEANING LINE including: (7) Fiberglass dip tanks, large fiberglass storage tank, mixers, pumps, controls, eye wash station, exhaust system

## (2) VIBRATORY FINISHERS

ROYSON 10-CTV VIBRATORY FINISHER, lined bowl, 10 cu.ft.cap. 5.5 KW, timer & controls, (2) rinse fiberglass tanks, new 2008

ROYSON 5-CTV-IS VIBRATORY FINISHER, lined bowl, power lid, 4 cu.ft.cap., 2 HP, timer & controls, new 2008

## (2) FORK LIFTS

TOYOTA 3000 LBS., ELECTRIC FORK LIFT, side shift attach., S/N 17062

CLARK 2000 LBS. ELECTRIC WALK BEHIND STACKER w/ charger

## MATERIAL HANDLING

2 TON PORTABLE SHOP CRANE

(2) 5500 LBS PALLET JACKS

1000 LBS.CAP. PORTABLE LIFT TABLE

(11) PORTABLE DUMP TYPE SCRAP HOPPERS

## MAN-LIFT

SKY JACK II-3220 PORTABLE ELECTRIC SCISSORS LIFT, 500 lbs.cap.

**(2) FLOOR WASHERS**

**ADVANCE 28LX ELECTRIC WALK BEHIND FLOOR WASHER,**  
type 392290, S/N 1083017

**TASKI ELECTRIC WALK BEHIND FLOOR WASHER**

**OIL AND COOLANT STORAGE & RECYCLING**

**HYDE COOLANT RECYCLING UNIT,** steel tank

**HYDE OIL PORTABLE SUMP SUCKER,** type HSC 100/100 EHP, S/N 45045, new 1993

**(2) STEEL COOLANT STORAGE TANKS**

**TRAMP CHAMP PORTABLE OIL SEPARATOR**

**(6) BINKS CENTRE-CLEAN OIL CLEANERS**



**HYDE COOLANT RECYCLING UNIT**



**HYDE PORTABLE OIL SUMP SUCKER**



**TOOL CABINETS**



**PORTABLE NO.40 TOOL CART**



**VIEW OF TOOLING**



**LARGE CAPACITY CEILING MOUNTED AIR CLEANER**



**BUEHLER ECOMET 3 GRINDER/POLISHER**



**TOMBSTONES**



**PORTABLE PC ENCLOSURE**



**150 AMP MILLERMATIC MIG WELDER**



**MILLING VISES**

**MISCELLANEOUS MACHINING & EQUIPMENT**

**POLYSCIENCE PORTABLE RECIRCULATOR UNIT**

**HUOT PORTABLE TOOL CART,** No.40 taper

**(6) KENNEDY PORTABLE TOOL CHESTS**

**WATERLOO TOOL CHEST**

**(2) CRAFTSMAN PORTABLE TOOL CHESTS**

**(2) EL/AE PORTABLE TOOL CABINETS**

**(7) PORTABLE 2-DOOR TOOL CABINETS**

**FLAMMABLE STORAGE CABINET**

**EQUIPTO TOOL CABINET w/ work table**

**ALUMINUM BAR STOCK with racks**

**(2) PROTO PORTABLE TOOL CHESTS**

**(4) PORTABLE PC ENCLOSURES**

**BRANSON ULTRASONIC CLEANER w/ 7000 generator**

**(2) ROYAL FILTER MIST UNITS**

**(2) STEEL AIR HOLDING TANKS**

**LISTA 12-DRAWER TOOL CABINET**

**(4) NU-ERA 9-DRAWER TOOL CABINETS**

**EQUIPTO 9-DRAWER TOOL CABINET**

**NU-ERA 8-DRAWER TOOL CABINET**

**PARTS WASHING TANK**

**RIDGID 12 GAL. PORTABLE SHOP VAC**

**(2) SHOP VAC PORTABLE SHOP VAC'S**

**ULTRA PORTABLE SHOP VAC**

**MILLER 150 AMP MILLERMATIC 185**

**PORTABLE MIG WELDER**

**48" X 72" STEEL WORK TABLE w/ vise**

**L&R QUANTREX 140H ULTRASONIC CLEANER**

**BUEHLER ECOMET 3 VARIABLE SPEED GRINDER/POLISHER**

**WASCOMAT SENIOR W123 TRIPLE**

**LOADER WASHING MACHINE**

**FRONT LOADING ELECTRIC DRYER**

**BUEHLER VACUUM IMPREGNATION PUMP**

**OHAUS DIAL-O-GRAM WT. SCALE**

**ENERPAC TURBO AIR PUMP w/ cart**

**9" DIA. TROYKE ROTARY TABLE**

**WALK BEHIND SNOW BLOWER**

**LARGE CAPACITY CEILING MOUNTED INDUSTRIAL AIR CLEANER**

**AIRFLOW PORTABLE DUST COLLECTOR**

**2-HOLE PORTABLE SHOT BLAST CABINET**

**(3) DOLAN-JENNER FIBRE LITES**

**(2) PORTABLE TOOL STORAGE CARTS**

**DEWALT ELECTRIC SAWS/ALL**

**DELTA DUST COLLECTOR**

**48" X 48" PLATFORM SCALE W/ COUNTER**

**PORTABLE BANDING CART**

**HERTNER AUTO 6000 BATTERY CHARGER**





**BROWN & SHARPE GLOBAL 9128  
IMAGE CMM**



**BROWN & SHARPE  
VALIDATOR XCEL CMM**



**30" SCHERR TUMICO  
OPTICAL COMPARATOR**



**VIEW OF INSPECTION**



**FOV SMART SCOPE  
OPTICAL GAGING MACHINE**



**PARLEC  
TMM TOOL SETTER**



**PARLEC Z40 TOOL SETTER**



**MICROSCOPE**



**INSPECTION**

**INSPECTION & MEASURING**

**BROWN & SHARPE GLOBAL 9128 IMAGE CMM**, capacity: 25" x 40" x 24", PHC10-2 Renishaw probe system, PC & Monitor, S/N 0303-6107, new 2003

**BROWN & SHARPE VALIDATOR XCEL CMM**, capacity 20" x 24" x 12", PH10T Renishaw probe system, PC & Monitor, S/N 0888-107

**30" SCHERR TUMICO OPTICAL COMPARATOR**, 2axes D.R.O., S/N D843801

**FOV SMART SCOPE OPTICAL GAGING MACHINE W/ ACCUCENTRIC ZOOM LENS**, PC & Monitor

**PARLEC Z40 TOOL SETTER**, 2 axes D.R.O., type P24-121650, S/N 87424-1293

**PARLEC TMM TOOL SETTER W/ MONITOR**, series 975-50

**CINCON TP1000 TOOL CHECKER w/ scope**

**36" X 72" RAHN BLACK GRANITE SURFACE PLATE W/ PORTABLE STAND • 36" X 48" RAHN GRAY GRANITE SURFACE PLATE w/ stand • 36" X 48" GRAY GRANITE SURFACE PLATE w/ stand • 36" X 48" STARRETT PINK GRANITE SURFACE PLATE w/ stand • (4) 24" X 36" STARRETT PINK GRANITE SURFACE PLATES w/ stand • 18" X 24" PINK GRANITE SURFACE PLATE W/ LEDGE AND PORTABLE STAND • 18" X 18" PINK GRANITE SURFACE PLATE • (8) 12" X 18" GRAY GRANITE SURFACE PLATES w/ ledge • 12" X 18" PINK GRANITE SURFACE PLATE w/ ledge • 12" X 18" PINK GRANITE SURFACE PLATE w/ stand • 12" X 18" PINK GRANITE SURFACE PLATE • 12" X 12" GRAY GRANITE SURFACE PLATE • 12" X 12" PINK GRANITE SURFACE PLATE**

Also: Tilting magnetic chuck, Starrett 673 Micrometer, Starrett granite surface plate checker, Wild type 355110 Jewel mount microscope, Trimos vertical 3 digital height gage, Pocket Surf III, Mitutoyo height master, step granite blocks, (5) SPI granite platse w/ indicator, 3R system set-up block, Nuline microscope, Mitutoyo toolmakers microscope w/ (2) axes table, Magnifying inspection lights, height gages, angles, risers, cheks, parallels, plates, indicators, v-blocks, Starrett Digi-Chek, Leeds microscope, Meiji Microscope,

Federal dimensionair, pin gages, hole gages, jo-blocks, depth mikes, bore mikes, ID mikes, O.D. mikes, verniers, calipers, meters, testing equip.,etc.

**MISCELLANEOUS**

Including: Tooling, shop furniture, tables, vises, large amounts of milling vises, chick holding fixtures, tombstones, angles, tables, risers, No.30, 3T, 40, tool holders, carbide inserts, Carbide tooling, R-8 tooling, boring heads, spade drills, collets, taps, fractional drills, drill bits, cutters, milling tooling, end mills, tapping heads, ladders, lights, cords, fans, storage cabinets, shelving, supply cabinets, tool cabinets, carts, pallet racking, steel scrap bins, (2) vacuum cleaners, electric floor polisher, steel lockers, cardboard packaging supplies, electric portable tools, hand tools, taps, dies, shop support, etc.

**OFFICE FURNITURE & EQUIPMENT**

Desks, tables, credenzas, chairs, bookcases, book shelves, board room, lunch room with tables, microwave and refrigerator, computer furniture, calculators, fax, copiers, Sharp ARM237 copier, dividers, etc.

**LODGING FOR DHY CORPORATION**

**COMFORT INN IN LAKEVILLE**  
17605 KENRICK AVE.,  
LAKEVILLE, MN 55044  
PHONE: 952-898-3700

**HOLIDAY INN HOTEL & SUITES LAKEVILLE**  
20800 KENRICK AVE.,  
LAKEVILLE, MN 55044  
PHONE: 952-469-1134

**DIRECTIONS TO DHY CORPORATION**

**FROM MINNEAPOLIS - ST. PAUL INTERNATIONAL AIRPORT**  
Exit Airport and go onto GLUMACK DR. Merge onto MN-5 W toward I-494/Bloomington. Merge onto I-494 W/MN-5 W via exit on LEFT. Take the MN-77 S exit, EXIT 2C.0.2 Take the Lindau Ln/Killebrew Dr exit on the LEFT. Merge onto MN-77 S/Cedar Ave via the exit on the LEFT. Merge onto I-35E S toward Albert Lea. Merge onto I-35 S. Take the CR-70 exit, EXIT 81, toward Lakeville/Farmington. Turn LEFT onto 210TH ST W/CR-70 E. Continue to follow CR-70 E. Turn LEFT onto Holyoke Ave/CR. 21467 Holyoke Ave is on the LEFT. Watch for auction signs.

**LIVE  
ON-SITE &  
WEBCAST**

**AUCTION #1:** *Plant Closed* **RADIANCE MOLD & ENGINEERING**

**TUES., AUG. 18, 2009 at 10:00am EDT, Chesterfield Township, MI**  
PREVIEW: Monday, August 17, 9am - 4pm EDT & Morning of Sale

**State-of-the-Art CNC Mold Making Facility Consisting of Blow Molders, Injection Molders & Vertical Machining Centers**

**LIVE  
ON-SITE &  
WEBCAST**

**AUCTION #2:** *Formerly the Assets of* **DHY CORPORATION**

**THURSDAY, AUGUST 20, 2009 at 10:00am CDT, Lakeville, MN**  
PREVIEW: Wednesday, August 19, 9am - 4pm CDT & Morning of Sale

**State-of-the-Art CNC Machining Facility Consisting of CNC Horizontal Cell, CNC Turning Centers, CNC Automatics**

**FOR THE COMPLETE TERMS & CONDITIONS OF THESE AUCTIONS**

Please visit our website - [www.BIDITUP.com](http://www.BIDITUP.com) and click on **RADIANCE MOLD & ENGINEERING** and **DHY CORPORATION**

**Thinking of having an auction or need an appraisal? Call us at 818.508.7034**

**FEATURED AUCTIONS**

**AUCTION #1:**  
*Plant Closed*  
**RADIANCE MOLD & ENGINEERING**  
**TUES., AUGUST 18, 2009**  
**CHESTERFIELD TOWNSHIP, MI**

**AUCTION #2:**  
*Formerly the Assets of*  
**DHY CORPORATION**  
**THURS., AUGUST 20, 2009**  
**LAKEVILLE, MN**



**2001**  
STERLING BLOW MOLDING MACHINE



MATSUURA CNC HORIZ MACHINING CENTER



**1998**  
OKK GRAPHITE VERTICAL MACHINING CENTER

**BIDITUP™**  
AUCTIONS & APPRAISALS WORLDWIDE  
11426 Ventura Boulevard  
Studio City, California 91604  
Phone: 818.508.7034  
Fax: 818.508.3025  
info@biditup.com

**2 MACHINERY AUCTIONS, LOOK INSIDE!**

**ATTENTION: PLANT MANAGER  
OR EQUIPMENT BUYER**

For a Complete Listing of Upcoming Auctions Visit  
[www.BIDITUP.com](http://www.BIDITUP.com)

Register Online and Receive Auction  
Updates and Information via E-mail.

**WEBCAST**



Can't attend the auction in person? You can participate and bid in real time via the Internet. Preview assets with detailed digital photos, lot catalogs, and in-depth descriptions.

For more information, visit  
[www.BIDITUP.com](http://www.BIDITUP.com)