

IA Machinery Is Pleased To Offer For Your Consideration:

Our Ref: 4402

**ONE Preowned 230 Ton PACIFIC Hydraulic Press Brake
MDL. J230-10, S/N A-538, MFG 1987**

CAPACITY.....	10' X 5/16"
TONNAGE.....	230 TON BENDING / 151 TON PUNCHING
MAX. RAM DIE WEIGHT.....	0.9 TONS
OVERALL BED AREA.....	10' L-R X 8" F-B
DISTANCE BETWEEN HOUSINGS.....	8'5"
STROKE.....	0"-10"
OPEN HEIGHT.....	15"
CLOSED HEIGHT.....	5"
SPEEDS:	
SLOW.....	15 IPM
MEDIUM.....	64 IPM
FAST.....	131 IPM
APPROXIMATE WEIGHT.....	23,000 LBS.
APPROXIMATE DIMENSIONS.....	13' L-R X 6' F-B X 10' HIGH

EQUIPPED WITH:

- HURCO AUTOBEND 5C CNC 2-AXIS BACK GAUGE CONTROLS
- MODE: OFF/INCH, SINGLE STROKE/MANUAL RETURN, SINGLE STROKE/AUTO RETURN
- ADVANCE SPEED SELECT - ROLLER MICRO SWITCH
- ISB SAFETY LIGHT CURTAINS
- (5) 24" SECTIONAL DIE CLAMPS
- FINE TILT ADJUSTMENT
- ELECTRICS: 460/3/60

PRICE: ON SITE, (FERNDAL, MI)..... **\$42,500.00**

LEASE PAYMENT OPTION

*\$1,447/month for 36 months

To apply for financing please contact Tiffany Guimond at 818-508-7034 or email tguimond@biditup.com.
To submit a credit application online click [here](#)

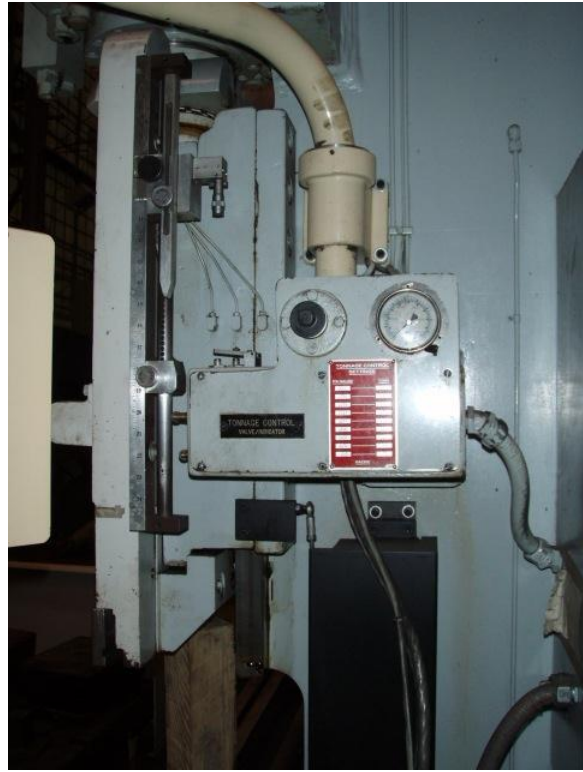
*Payments are based (OAC) and \$1.00 buyout Lease, 36 months term, 25% down payment, shorter or longer terms available. This advertisement in no way constitutes an offer to buy or sell equipment from Industrial Assets Machinery or BIDITUP or for Charcole Capital to provide financing or leasing. Payments exclude destination, rigging and transportation charges, any applicable taxes, and any applicable fees. Any calculation of any price, tax, lease or finance terms is for your reference only, is an estimate, and is subject to change without notice.













PACIFIC[®]
DATA PLATE

MODEL NO. 3230-10
 SERIAL NO. A538
 MAX. CAPACITY 5/16" X 10" - 0"
 PUNCHING CAPACITY 151 TONS
 MAX. RAM DIE WT. 0.9 TONS

HYDRAULIC
 DRAWING NO. 04-62880-01
 RELIEF SETTING (S) 3333 PSI.

ELECTRICAL
 DRAWING NO. 7775810-1
 SUPPLY: 220 VOLTS, 3 PH, 60 HZ.
 FULL LOAD 200 AMPS, 50 AMP RATING,
10000 AMP INTERRUPTING CAPACITY.
 CONTROL: 230 VOLTS, 3 PH, 220 VA.

MANUFACTURED UNDER ONE OR MORE
OF THE FOLLOWING UNITED STATES
PATENTS

3,375,800	3,163,375	3,293,535	3,305,100
3,331,364	3,274,389	3,433,722	3,324,822
3,243,934	3,187,407	3,444,100	3,373,734
3,243,402	3,243,730	3,324,384	3,446,373
3,243,562	3,323,348	3,324,384	3,231,710
3,243,384	3,333,400	3,293,535	3,304,326
	3,333,400	3,333,400	3,243,892

HYDRAULIC OIL HAVING MINIMUM VISCOSITY INDEX OF 55.
 TYPE PUMP: VICKERS VANE HIGH PERFORMANCE
 DENISON VANE & PISTON
 S.O.S. VISCOSITY @ 100° F: 175 TO 230
 LUBRICANT: MOBIL DTE 25

KEEP HYDRAULIC OIL TANK FILLED TO LEVEL INDICATED ON DIP-
STICK. CHECK FLUID LEVEL DAILY. MAINTAIN OIL IN CLEAN CONDITION.
GREASE LUBRICATED PARTS
 LUBRICATE GUIDE ASSEMBLY DAILY, AND OTHER MISC.
 POINTS BY PRESSURE GREASE GUN OR AUTOMATIC
 LUBRICATOR (IF SO EQUIPPED) FILLED WITH MOBILUX 25 P.
 FOR ADDITIONAL DETAILS REFER MAINTENANCE SECTION, GENERAL M.C. MANUAL.

PACIFIC[®]
 HYDRAULIC PRESSES AND SHEARS
 PACIFIC PRESS & SHEAR CORP.
 WT. CARREL, FRANCE

AIR BENDING TONNAGES REQUIRED PER LINEAR FOOT

Thickness of Metal	1/8"	3/16"	1/4"	5/16"	3/8"	7/16"	1/2"	5/8"	3/4"	7/8"	1"	1 1/8"	1 1/4"	1 1/2"	1 3/4"	2"
10	100	120	140	160	180	200	220	240	260	280	300	320	340	360	380	400
12	120	144	172	198	228	258	288	318	348	378	408	438	468	498	528	558
14	140	168	200	234	270	306	342	378	414	450	486	522	558	594	630	666
16	160	192	232	276	324	372	420	468	516	564	612	660	708	756	804	852
18	180	216	264	318	376	436	496	556	616	676	736	796	856	916	976	1036
20	200	240	296	360	428	496	564	632	700	768	836	904	972	1040	1108	1176
22	220	264	328	396	472	548	624	700	776	852	928	1004	1080	1156	1232	1308
24	240	288	360	438	524	612	700	788	876	964	1052	1140	1228	1316	1404	1492
26	260	312	392	480	576	672	768	864	960	1056	1152	1248	1344	1440	1536	1632
28	280	336	424	520	624	728	832	936	1040	1144	1248	1352	1456	1560	1664	1768
30	300	360	456	564	676	788	900	1012	1124	1236	1348	1460	1572	1684	1796	1908
32	320	384	488	600	716	832	948	1064	1180	1296	1412	1528	1644	1760	1876	1992
34	340	408	520	636	756	876	996	1116	1236	1356	1476	1596	1716	1836	1956	2076
36	360	432	552	672	796	924	1052	1180	1308	1436	1564	1692	1820	1948	2076	2204
38	380	456	576	704	836	972	1108	1244	1380	1516	1652	1788	1924	2060	2196	2332
40	400	480	608	744	888	1036	1184	1332	1480	1628	1776	1924	2072	2220	2368	2516
42	420	504	636	780	932	1088	1244	1400	1556	1712	1868	2024	2180	2336	2492	2648
44	440	528	672	824	984	1148	1312	1476	1640	1804	1968	2132	2296	2460	2624	2788
46	460	552	708	864	1032	1204	1376	1548	1720	1892	2064	2236	2408	2580	2752	2924
48	480	576	744	912	1088	1272	1456	1640	1824	2008	2192	2376	2560	2744	2928	3112
50	500	600	780	960	1148	1344	1536	1732	1928	2124	2320	2516	2712	2908	3104	3300
52	520	624	816	1008	1204	1408	1612	1816	2020	2224	2428	2632	2836	3040	3244	3448
54	540	648	852	1056	1260	1472	1684	1896	2108	2320	2532	2744	2956	3168	3380	3592
56	560	672	888	1104	1312	1536	1752	1968	2184	2400	2616	2832	3048	3264	3480	3696
58	580	696	924	1152	1360	1600	1824	2048	2272	2496	2720	2944	3168	3392	3616	3840
60	600	720	960	1200	1416	1672	1904	2136	2368	2600	2832	3064	3296	3528	3760	3992
62	620	744	996	1248	1472	1736	1976	2216	2456	2696	2936	3176	3416	3656	3896	4136
64	640	768	1032	1296	1536	1800	2048	2296	2544	2792	3040	3288	3536	3784	4032	4280
66	660	792	1068	1344	1600	1872	2124	2376	2628	2880	3132	3384	3636	3888	4140	4392
68	680	816	1104	1392	1664	1920	2176	2432	2688	2944	3200	3456	3712	3968	4224	4480
70	700	840	1140	1440	1728	1992	2240	2504	2768	3032	3296	3560	3824	4088	4352	4616
72	720	864	1176	1488	1792	2064	2304	2576	2840	3104	3368	3632	3896	4160	4424	4688
74	740	888	1212	1536	1856	2136	2392	2664	2928	3192	3456	3720	3984	4248	4512	4776
76	760	912	1248	1584	1920	2208	2448	2720	2984	3248	3512	3776	4040	4304	4568	4832
78	780	936	1284	1632	1984	2272	2496	2768	3032	3296	3560	3824	4088	4352	4616	4880
80	800	960	1320	1680	2048	2336	2544	2824	3088	3352	3616	3880	4144	4408	4672	4936
82	820	984	1356	1728	2112	2376	2592	2876	3144	3408	3672	3936	4200	4464	4728	4992
84	840	1008	1392	1776	2176	2416	2640	2916	3184	3448	3712	3976	4240	4504	4768	5032
86	860	1032	1428	1824	2240	2448	2688	2968	3240	3504	3768	4032	4296	4560	4824	5088
88	880	1056	1464	1872	2304	2480	2736	3016	3280	3544	3808	4072	4336	4600	4864	5128
90	900	1080	1500	1920	2368	2512	2784	3064	3320	3584	3848	4112	4376	4640	4904	5168
92	920	1104	1536	1968	2432	2544	2840	3120	3384	3648	3912	4176	4440	4704	4968	5232
94	940	1128	1572	2016	2496	2576	2904	3184	3440	3704	3968	4232	4496	4760	5024	5288
96	960	1152	1608	2064	2560	2608	2968	3240	3504	3768	4032	4296	4560	4824	5088	5352
98	980	1176	1644	2112	2624	2640	3032	3304	3568	3832	4096	4360	4624	4888	5152	5416
100	1000	1200	1680	2160	2688	2672	3096	3360	3632	3896	4160	4424	4688	4952	5216	5480

• MODE SELECTOR MUST BE POSITIONED IN INCH TO START MACHINE.
 • USE PALM BUTTONS TO OPERATE MACHINE IN INCH MODE.
 • HIGH ADVANCE IS AN APPROACH SPEED. DO NOT USE FOR PRESSING.
 • USE RAM LEVEL BYPASS WITH CARE AFTER READING OPERATORS
 MANUAL AND INSTRUCTION OF TRAINED SUPERVISION.

Motor Start (Green push button)

Motor Stop (Red push button)

Mode Selector (Key switch): OFF, INCH, SINGLE STROKE MANUAL RETURN, SINGLE STROKE AUTO RETURN

Advance Speed Selector (Key switch): ROCKER SWITCH OFF, ON, LOW, MEDIUM, HIGH, LOW

CONTROL HAND (Key switch): Down OFF, Stroke Stop ON

CONTROL FOOT (Key switch): Return OFF, Stroke Stop ON

Ground Connected (Yellow push button)

Ram Level Bypass (Orange push button)

Pressure Reversal (Key switch): OFF, ON

Tonnage Control (Key switch): HOLD-DOWN TO SET

Return (Key switch): OFF, ON

Run Station (Key switch): 1, 2, 1&2

Light Curtain (Key switch): OFF, ON

NEVER PLACE HANDS OR FEET UNDER THE PRESSURE POINTS