

AUCTION

2 DAY SALE - 2 LOCATIONS

CANT MAKE IT IN PERSON?

ONLINE BIDDING AVAILABLE:

BidSpotter.com

**AUCTION #1: Wednesday, June 22, 2011 at 10:00am EDT
COPPER/BRASS ROLLING MILL EQUIPMENT AND REAL ESTATE**

700 So. Union St., Mishawaka, IN 46544

Preview: Monday, June 20 & Tuesday, June 21, 9:00am to 4:00pm and Morning of Sale

**AUCTION #2: Thursday, June 23, 2011 at 10:00am EDT
CASTING EQUIPMENT AND REAL ESTATE**

31140 Edison Road, New Carlisle, IN 46552

Preview: Tuesday, June 21 & Wednesday, June 22, 9:00am to 4:00pm and Morning of Sale

(Both Near South Bend - Minutes from South Bend Regional Airport and Only 90 miles East of Chicago)

*Sale by Order of Secured
Party In Possession*



Former Bankruptcy Assets of
SCOTT BRASS, INC.

LATE MODEL COPPER/BRASS ROLLING MILL, CASTING EQUIPMENT AND REAL ESTATE



CHAVANNE-BRUN REVERSING ROLLING MILL



RADCON ANNEALING FURNACE



146,000 SQ. FT. FACILITY WITH 30 ACRES IN MISHAWAKA, IN



New in 1997

49,500 SQ. FT. FACILITY IN NEW CARLISLE, IN

ROLLING MILL FACILITY'S EQUIPMENT

- ▶ ROLLING MILL
- ▶ (2) TRAVERSE WINDING LINES
- ▶ CLEANING/PICKLING LINE
- ▶ SLITTING LINE
- ▶ (5) ANNEALING FURNACES
- ▶ TOOLING & RELATED EQUIPMENT
- ▶ SPARE PARTS
- ▶ PLANT SUPPORT EQUIPMENT
- ▶ LAB & TESTING

CASTING FACILITY'S EQUIPMENT

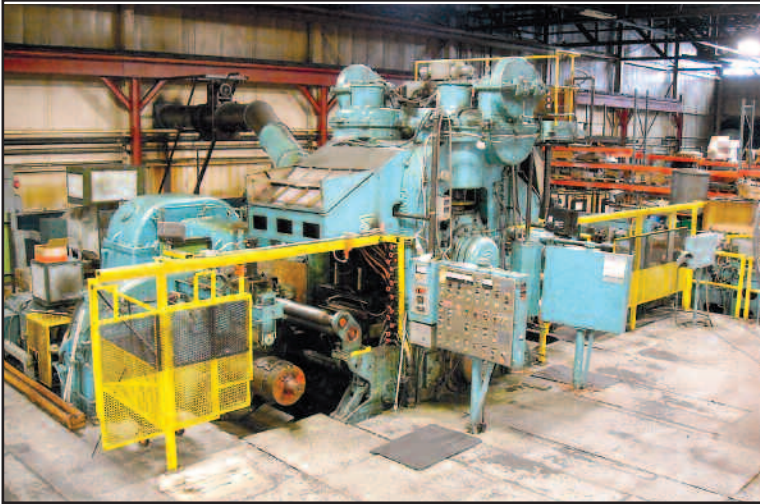
- ▶ (2) 1998 COIL CASTING LINES
- ▶ (2) MELTING FURNACES
- ▶ (4) HOLDING FURNACES
- ▶ 750KW STANDBY GENERATOR
- ▶ COOLING TOWER
- ▶ HEAT EXCHANGE
- ▶ DUST COLLECTOR
- ▶ LAB & TESTING
- ▶ TOOLING & RELATED EQUIPMENT
- ▶ PLANT SUPPORT EQUIPMENT
- ▶ BRIQUETING PRESS

ONSITE & WEBCAST AUCTION - Wednesday, June 22nd, Beginning at 10:00am EDT

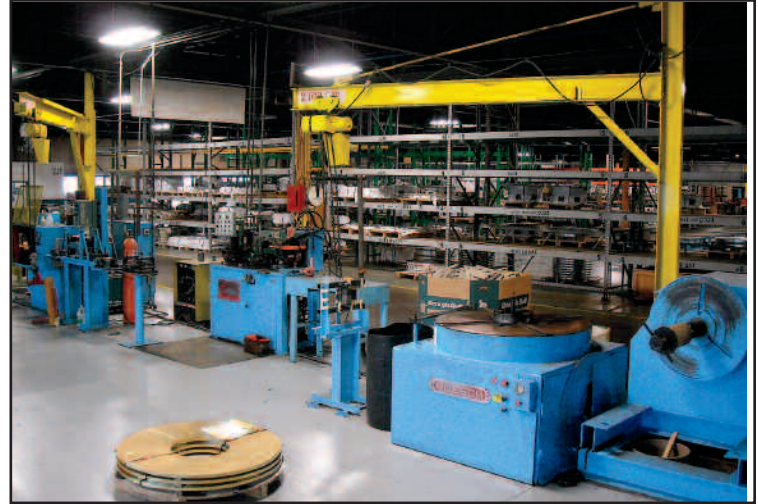
Auction #1 COPPER/BRASS ROLLING MILL EQUIPMENT AND REAL ESTATE

700 So. Union St., Mishawaka, IN 46544

Preview: Monday, June 20 & Tuesday, June 21, 9:00am to 4:00pm and Morning of Sale



CHAVANNE-BRUN REVERSING ROLLING MILL



RUESCH TRAVERSE WINDING LINE



NEW 1997

AEROMET CONTINUOUS COIL CLEANING/PICKLING LINE



RADCON ANNEALING FURNACE

REVERSING ROLLING MILL

CHAVANNE - BRUN 4-HIGH COLD REVERSING MILL *FINISH MILL*, .010' - .250" Thickness Range, 800 FPM, 28" Strip Width, 11" Dia Work Rolls, 36" Dia Back-up Rolls, 300 DC HP Reels, 800 HP DC Mill Drive, Vollmer Gauges, Screw Down Positioning Feed Back Controls, Spare Rolls, Chocks & Bearings

(2) TRAVERSE WINDING LINES

(2) 16" RUESCH TRAVERSE WINDING LINES, Mdl. 3159 / 59, Horizontal Uncoilers, Guild Shear & End Welders, Hobart Power Supplies, Techmet Laser Scanning, Tension Bridles, Oscillating Recoilers, Digital Controls w/Tension Regulators, 2 Lines Available.

CLEANING/PICKLING LINE

1998 36" AEROMET CONTINUOUS CLEANING / PICKLING LINE, Mandrel Uncoiler, Coil Car, Peeler, Coil Breaker, Crop Shear, Stitcher, Pinch Rolls, 80/20 Sulfuric Acid Bath, Cold Rinse Tank, Brushing Station, Hot Water Rinse, Gas Fired Hot Air Dryer, Powered S Bridal Roll Stand, Exit Crop Shear, Recoiler with 200 HP DC Drive, Allen Bradley Solid State PLC Controls.

SLITTING LINE

18" X 10,000 RUESCH SLITTING LINE, Littell Uncoiler, Hold Down Roll, 3" Dia. Arbors Reusch Slitter Head, Shimless Tooling, Edge Guides 40 HP DC Drive, 2 Recoilers, 16" Dia. & 16" Dia Drums, Recoiler and Slitter have a Common Drive, Exit Turnstile, Downlayer, 30' Exit Conveyor, Complete Line.

(4) ANNEALING FURNACES

2000 RADCON BELL TYPE ANNEALING FURNACE, 54" Dia x 80" High, Nitrogen Atmosphere, 2 Covers, 2 Bases, 1550 Degrees F, Programmable Temperature Controls with Digital Readouts, GE Fanuc PLC Controls.

1997 RADCON BELL TYPE ANNEALING FURNACE, 132" dia x 66" High, Nitrogen Atmosphere, 2 Covers, 2 Bases, 1550 Degrees F, Air Cooled, Cooling Hood, GE Fanuc PLC Controls, with Digital Readouts.

1990 RADCON BELL TYPE ANNEALING FURNACE, 132" Dia x 66" High, Nitrogen Atmosphere, 2 Furnaces, 5 Bases, 5 Covers, 1400 Degeees F, Programmable PLC Controls, Allen Bradley Readouts.

1986 RADCON BELL TYPE ANNEALING FURNACE, 66" Dia x 66" High, Nitrogen Atmosphere, 1400 Degrees F, 3 Bases, 3 Covers, Air Cooled, PLC Controls with Digital Readouts.

1986 ANNEALING FURNACE WITH GAS FIRED BELL FURNACE, 1400 Degrees F, 132" Dia. x 66' H with (3) Covers, (3) Bases, Programmable Temperature Controls.

1985 CONTROL COOLING SYSTEM FOR ALL FURNACES AND COVERS W/(2) EVAPCO LST-5-91 COOLING TOWERS - Approx. 200 Ton Cap., 10' x 6' x 10'h; (3) Blowers; (2) Cooling Towers - Approx. 75 Ton Cap. Steel Housing on Steel Legs (2) Chill Tanks - Approx. 1,000 Gal. Cap. and Pumps

(2) TIN LINES

(1) MECHANICAL (1) AIR KNIFE WIPE-OFF TIN COATING LINES, ONE (NEW 2000), Hydraulic 4-Post Stitching Presses, Fiberglass Flux Tanks, Rubber Lined Dip Tanks, Gas Fired Coating Pots, Mechanical Wiper, Edge Guides, Turnstile

MISCELLANEOUS PRODUCTION EQUIPMENT

REWIND LEVELLER LINE - 34", Uncoiler, 9-Roll Straightener, Scrap Winder, T/O Roller Conveyor

1988 TENSION LEVELING LINE - 8", .005 to .050 Gauge Cap., w/Unwind - 21", 15 Hp DC Motor, Snubber; Spacer Stand; Roll Cassette - 4/5 x 2-1/2" x 10"; Egan Recoiler - 28"; Signode Table Tyer - Strapper

(2) MECHANICAL UPENDERS - 50" x 50"

YODER SCRAP WINDER - 7-1/2 Hp w/Reel - 46" Dia.

(12) BRIDGE CRANES & (8) JIB CRANES

15 TON CAPACITY

INDUSTRIAL INSTALLATIONS DOUBLE GIRDER OVERHEAD BRIDGE CRANE - 15 Ton Cap., Pendant Control, Approx. 60' Span

1986 UESCO DOUBLE GIRDER TRAVELING BRIDGE CRANE - 15 Ton Cap., 60' Span x 140' Craneways w/electric Wire Rope Hoist - 15 Ton Cap., Robbins & Myers Powered Trolley, Pendant Controlled

OVERHEAD TRAVELING DOUBLE GIRDER BRIDGE CRANE - 15 Ton Cap., 50' Span x 160' Craneways w/Electric Wire Rope Hoist - Powered Trolley, Pendant Controlled

UESCO INDUSTRIES DOUBLE GIRDER OVERHEAD BRIDGE CRANE - 15 Ton Cap., Pendant Control, Approx. 45' Span

DOUBLE GIRDER OVERHEAD BRIDGE CRANE - 15 Ton Cap., Pendant Control, Approx. 45' Span

7½ TON CAPACITY

1985 INDUSTRIAL INSTALLATIONS OVERHEAD TRAVELING BRIDGE CRANE - 7-1/2 Ton Cap., 35' Span x 160' Craneways w/Electric Wire Rope Hoist - 7-1/2 Ton Cap., Powered Trolley, Pendant Controlled

TO SCHEDULE AN AUCTION OR APPRAISAL, CALL 818.508.7034

ONSITE & WEBCAST AUCTION – Wednesday, June 22nd, Beginning at 10:00am EDT

Auction #1 COPPER/BRASS ROLLING MILL EQUIPMENT AND REAL ESTATE

700 So. Union St., Mishawaka, IN 46544

Preview: Monday, June 20 & Tuesday, June 21, 9:00am to 4:00pm and Morning of Sale



ASSORTED BRIDGE CRANES



SKYJACK SELF-PROPELLED PERSONNEL LIFT



UNITED UNIVERSAL TENSILE TESTER



UNITED DIGITAL ROCKWELL HARDNESS TESTER



TENSILKUT LAB SAMPLE CUTTING MACHINE



VIEW OF FORKLIFTS

(12) BRIDGE CRANES & (8) JIB CRANES (Continued)

DEARBORN DOUBLE BEAM BRIDGE CRANE W/ROBBINS & MEYERS ELECTRIC WIRE ROPE HOIST - 7-1/2 Ton Cap., Powered Trolley, Pendant Controlled Robbins & Myers

INDUSTRIAL INSTALLATIONS SINGLE BEAM TRAVELING BRIDGE CRANE - 7-1/2 Ton Cap., 38' Span, Pendant Control w/Shaw-Box Cable Hoist - 7-1/2 Ton Cap.

5 TON CAPACITY

1986 OVERHEAD BRIDGE CRANE - 60' Span x 360' Craneways w/Dearborn Double Girder Bridge Crane; Robbins & Myers Electric Wire Rope Hoist - 5 Ton Cap., Powered Trolley, Pendant Controlled

OVERHEAD TRAVELING BRIDGE CRANE - 40' Span x 85' Craneways w/ (2) Uesco Single Beam Bridges - 5 Ton Cap.; Robbins & Meyers Cable Hoist - 5 Ton Cap., Pendant Controlled

(8) JIB CRANES - Approx. 20' Span x 15' H w/Electric Chain Hoists - 2 Ton Cap., Manual Trolley, Yale Pendant Controlled

(6) CRANE "C" HOOKS – 4 TON TO 10 TON CAPACITY

(4) HYSTER LPG FORKLIFTS

2000 HYSTER S155XL2 LPG FORKLIFT - 15,000 Lb. Cap., 3-Stage Mast - 181" Max. Lift

1998 HYSTER S155XL LPG FORKLIFT - 15,500 Lb. Cap., 2-Stage Mast

HYSTER S155XL2 LPG FORKLIFT - 15,500 Lb. Cap., 2-Stage Mast - 94.5" Max. Lift

1997 HYSTER S65XM LPG FORKLIFT - 5,950 Lb. Cap., 2-Stage Mast - 126.5" Max. Lift, Sideshifter

1999 SKYJACK SJKB-33N ELECTRIC SELF-PROPELLED PERSONNEL PLATFORM LIFT; PERSONNEL LIFT - 750 Lb. Cap., 22'h Platform

(6) DIGITAL SCALES

ELECTRONIC LOW PROFILE PLATFORM SCALE - 3,000 Lb. Cap., 3' x 3' w/Mettler Toledo Panther Remote Digital Weight Indicator

DIGITAL LOW PROFILE PLATFORM SCALE - 5' x 5' w/Mettler Toledo Panther Plus; Remote Digital Weight Indicator - 20,000 Lb. Cap.

ABOVE GROUND FLOOR SCALE - 5,000 Lb. Cap., 48" x 48" w/Toledo 8142 Electronic Digital Readout

(3) ABOVE GROUND FLOOR SCALES - 20,000 Lb. Cap., 48" x 48" w/Toledo 8142 Electronic Digital Readout

1986 MEMTEK WASTE WATER TREATMENT SYSTEM - 50 Gals./Minute, JW1 Filter Press, Tanks and Controls

PROCESS STEAM SYSTEM, (2) GAS FIRED BOILERS - Approx. 10 Hp, Pumps, Water Softening Systems.

AIR COMPRESSORS & DRYERS

GARDNER DENVER EPAQMD PACKAGED ROTARY SCREW AIR COMPRESSOR - 100 Hp w/Hankison PR1000 Refrigerated Air Dryer - 1,000 SCFM

1989 ATLAS COPCO GA-75 PACKAGED ROTARY SCREW AIR COMPRESSOR - 100 Hp, 130 PSI w/Pioneer R1000A Refrigerated Air Dryer - 1,000 SCFM; w/Vertical Receiver Pioneer OA500 Automatic Condensate Drain

DAYTON SPEEDAIRE 3Z4962 HORIZONTAL TANK MOUNTED AIR COMPRESSOR - 10 Hp

MAINTENANCE & SHOP EQUIPMENT

Monarch 18" Eng. Lathe - 18.5" SW x 78" CC; Bridgeport Series I Vertical Miller; Bridgeport 2J w/Milling Head - 1-1/2 Hp; Daytona DF-12 Drill Press; Enco 126-2225 Floor Drill Press; Wilton Challenger Double End Bench Grinder - 3/4 Hp; Dayton 4Z909B Double End Bench Grinder; Abrasive 1-1/2 Manual Surface Grinder - 6" x 18" Combination 6" Belt/12" Disc Grinder; Miller Dial Arc HF Port. AC/DC Gas Tungsten Arc Welder - 250 Amp; P&H; DAR300HFGW AC/DC Arc Welder - 300 Amp; Miller Millermatic 250 Portable DC Arc Welder/Wire Feeder - 200 Amp; Oxy/Acetylene Torch Sets; Parker Hannifin 10MF-406A-10C-1X853006 Port. Filtering System; Stone 655PM Portable Electric Concrete Mixer; Carolina CP-100 Hydraulic H-Frame Shop Press - 30 Ton Cap., 24" Between Uprights; Table Saw, Welders - 10"; Landa PHWS-11021D Portable Oil Fired Pressure Washer; Arbor Press - Ratchet Type.

LABORATORY

2001 United STM-20 Bench Top Universal Tensile Tester, S/N 0501535; United TM-10 Tensile Tester w/digital Readout and Speed Controller; Houston Instrument Omnigraphic w/Single-Pen Chart Recorder United Tru-Blue UHT-10 Digital Rockwell Hardness Tester, S/N 85158; Tensilkut Lab Sample Cutting Machine, Mdl. 10-23, S/N 354185; Lab-Line 100 Small Table Top Incubator; Olympus BHM Binocular Microscope w/Micrometer Stage w/Illuminator; Antonik Tester Service MHT-1 Micro Hardness Tester; UPA Technology MP-700 Table Top Dual Measuring Microcomputer for Beta-Backscatter Testing; Enco 130-5700- Bench Top Alligator Shear - 8"; Magna Flux Conductivity Meter, Metal Test Kit, Lieder 3X Microscope, Antonik Micro Hardness Tester, Wood Laboratory Benches, Worktables, Storage Cabinets, Etc.

SHOP FURNITURE AND EQUIPMENT

Worktables, Lockers, Storage & Parts Cabinets, Carts, Coil Stands, Scaffolding, Portable Dump Hoppers, Dock Lights and Plates

(4) Prefabricated Inplant Offices Consisting of: Steel Framing and Recessed Ceiling, Lighting - 12' x 8' x 10'h, 15' x 10' x 10'h, 10' x 8' x 10'h, 22' x 15' x 10'h

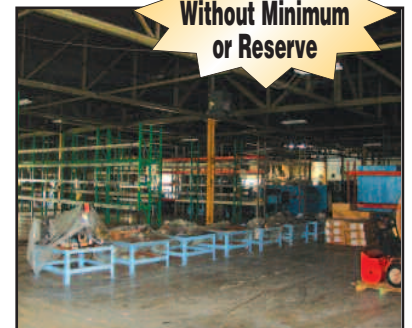
OFFICE FURNITURE & EQUIPMENT

Computers, Printers, Desk, Chairs, Metal/Formica Tables, File Cabinets, Book Racks, Fax Machines, Copiers, Etc.

Sony CCTV System w/(16) Fixed Color Video Camera w/Computer

REAL ESTATE TO BE AUCTIONED as First Lot at 10:00am EDT ROLLING MILL FACILITY • 700 So. Union Street, Mishawaka, IN

To Be Sold
Without Minimum
or Reserve



PROPERTY HIGHLIGHTS: Total of 144,510 SF with 1,988 SF of office space • Situated on 9.46 acres • 20' - 30' ceiling heights • Built in 1970 & 1998 • Two 4,000 amp/480 volt services • 8" floors • Three cranes: 5-15 Ton; 4-7 Ton; 3-5 Ton • Four docks • Two grade-level overhead doors • T-5 lighting • Fire sprinklers • City water & sewer

Real Estate Auctioneer, Brad B. Hooley, IN Lic. AU09200009

ONSITE & WEBCAST AUCTION - Thursday, June 23rd, Beginning at 10:00am EDT

Auction #2 CASTING EQUIPMENT AND REAL ESTATE

31140 Edison Road, New Carlisle, IN 46552

Preview: Tuesday, June 21 & Wednesday, June 22, 9:00am to 4:00pm and Morning of Sale



VIEWS OF DEMAG TECHNICA CONTINUOUS BRASS/COPPER SLAB CASTING LINES



KIRK & BLUM FURNACE FUME COLLECTION SYSTEM



VIEWS OF INDUCTOTHERM CORELESS MELTING FURNACES



GALLAND HENNING NOPAK 60DC HYDRAULIC BRIQUETTING PRESS/MATERIAL BALER



ONAN STANDBY DIESEL GENERATOR

(2) 1997 DEMAG TECHNICA CONTINUOUS BRASS/COPPER ALLOY COIL CASTING LINES

1997 DEMAG TECHNICA HC800 HORIZONTAL CONTINUOUS COPPER ALLOY CASTING LINE: Finished Product = 26" x 5/8" x 15,000# Master Coils Inductotherm Channel Induction Melting Furnace - 13,500#, Carrier Vibrating Equipment, Rail Mounted Vibrating Charging Hopper 4 x 8 x 30, Demag Technica W03 Induction Holding Furnace w/ 8000# Cap., Hydraulic Tilt, Inductotherm Linemelt 60 w/power Supply 250Kw, Demag Technica K7-S Strip Cooler 5/8" x 26" Strip, (8) Cooling Zones w/ Digital Flow Controllers, Inductotherm Spare Holding Furnace SS Pass Through Cooling Water Tank Demag Technica 800-B1-MCP Servomotor Driven Withdrawal Unit, MCP Computocast Microprocessor Casting Control, Demag Technica FR800 Inline Traveling Top and Bottom Surface Milling Machine, Demag Technica SC7 Hydraulic Flying Shear 300 Ton Cap., Demag Technica BE800 Strip Upcoiler, Inductotherm Miscroscan Holding Furnace Control Cabinet

1997 DEMAG TECHNICA HC800 HORIZONTAL CONTINUOUS COPPER ALLOY CASTING LINE, Finished Product = 26" x 5/8" x 15,000# Master Coils Carrier Vibrating Equipment, Rail Mounted Vibrating Charging Hopper 4 x 8 x 30, Demag Technica W03 Induction Holding Furnace w/ 8000# Cap. **Upgraded in 2007 w/Inductotherm 400 KW Coreless Melting Furnaces w/VIP Melt Pwr. Controls & Metal Leak Detector.**, Hydraulic Tilt, Demag Technica K7-S Strip Cooler 5/8" x 26" Strip, (8) Cooling Zones with Digital Flow Controllers, Inductotherm Spare Holding Furnace SS Pass-Through Cooling Water Tank Demag Technica 800-B1-MCP Servomotor Driven Demag Technica FR800 Inline Traveling Top & Bottom Surface Milling Machine, Demag Technica SC7 Hydraulic Flying Shear 300 Ton Cap., Demag Technica BE800 Strip Upcoiler, Inductotherm "VIP" Holding Furnace Control Cabinet

(4) MELTING & (4) FURNACES

(2) INDUCTOTHERM CHANNEL MELTING FURNACES 575 KW, 11,000 Lb Cap.: (2) Melting Furnaces 750 KW, 8,000 Lb. Cap., 3,250 Lbs./Hr. Melt Rate w/VIP Melt Pwr. Controls & Metal Leak Detector; (1) Holding Furnaces 400 KW, 1,000 Lb. Cap. Fitted to an 8,000 Lb. Holding Furnace w/Vip Melt Pwr. Control, (2) Holding Furnaces 250 KW.

1997 LINEMELT VERTICAL CHANNEL INDUCTION MELTING FURNACES - 13,500 Lb. Capacity, 3,500 Lbs./Hr. Melt Cap. Hyd. Tilt; Inductotherm Powermelt "VIP" Furnace Controls - 575 KW, 543 KVA; Digital Control System; Coolant Circulation Control Unit; Exhaust Hood to Exterior Dust Collector; Inductotherm Coreless Melting Furnace

(4) MELTING & (4) FURNACES (Continued)

2007 INDUCTOTHERM VERTICAL CORELESS MELTING FURNACE - 8,000 Lb. Cap., 3,500 Lbs./Hr. Melt Cap. Hydraulic Tilt; Inductotherm 500-06-CR "VIP" Furnace Control - 750 KW; Digital Control System; Inductotherm Coolant Circulation Control Unit; Exhaust Hood To Exterior Dust Collector; Pour Chute to Holding Furnace

(2) CARRIER FCS-31/70420 RAIL MTD. VIBRATORY CHARGING HOPPERS 4' x 8' x 30"

FURNACE EQUIPMENT

(2) GAS FIRED FORCED AIR PRE-HEATERS; MODERN EQUIPMENT - POURING LADLES - 1 and 5 Ton Cap.

SCRAP BALER

1980 GALLAND HENNING NOPAK HYDRAULIC BRIQUETTING PRESS/MATERIAL BALER, Mdl. 60DC, S/N 58404-3I, 14" x 14" x 16", w/Hydraulic Loader

PLANT SUPPORT

1997 ONAN 750 DHA STANDBY DIESEL GENERATOR SET, 750KW w/Cummins QST30-62-12-Cylinder Diesel Engine - 1,200 HP at 1800 RPM, Klein Fuel Tank Base and Full Enclosure -900 Gal. Cap.

(2) 1997 EVAPCO EXTERIOR PLATFORM MOUNTED COOLING TOWERS, 1000 Gal. Cap. Chill Tank, (4) Polaris S-141G15 Heat Exchangers, (2) 40 HP Pumps & (2) 7-1/2 HP Pumps

(2) KELLER DUST COLLECTOR SYSTEMS, Platform Mounted w/ Cyclone Separator, Fines Collector, Vacuum Blower

1997 KIRK & BLUM EXTERIOR FURNACE FUME COLLECTION SYSTEM, Dropout Box, 2 Dust Collectors, 125 HP Draft Blower, 50' Steel Stack. Note: Casting Plant was built in late 90's from a Greenfield Site

FINANCING AND LEASING AVAILABLE



CHARCOLE CAPITAL



Direct Lender - Equipment Financing & Leasing

Contact Tiffany Guimond (818) 508-7034, tguimond@biditup.com

TO SCHEDULE AN AUCTION OR APPRAISAL, CALL 818.508.7034

ONSITE & WEBCAST AUCTION - Thursday, June 23rd, Beginning at 10:00am EDT

Auction #2 CASTING EQUIPMENT AND REAL ESTATE

31140 Edison Road, New Carlisle, IN 46552

Preview: Tuesday, June 21 & Wednesday, June 22, 9:00am to 4:00pm and Morning of Sale



VIEW OF FORKLIFTS



AIR COMPRESSOR SYSTEM & DRYER



SPECTROLAB SPARK ANALYSIS SPECTROMETER



KENT AUTO SURFACE GRINDER



H&K LAB SAMPLE MILL

CAN'T MAKE IT IN PERSON?
ONLINE BIDDING AVAILABLE:
BidSpotter.com

MATERIAL HANDLING

AERIAL LIFT

1990 SNORKEL TB-A60RT SELF-PROPELLED BOOM TYPE AERIAL LIFT - 500 Lb. Cap., 60' Max. Lift, 30" x 60" Platform Size, Lpg, Tires - 15 x 19.5, Tubeless

BRIDGE CRANE

1997 INDUSTRIAL INSTALLATIONS DOUBLE GIRDER OVERHEAD BRIDGE CRANE - 60' Span, 15 Ton Cap., Radio Controlled w/Shaw-Box Cable Hoist; "C" Hook - 10 Ton Cap.

(2) COL. MTD JIB CRANES: 2 Ton, 15' Span x 10'h, W/electric Chain Hoist; 1/2 Ton, 12' Span x 10'h.

ANVER VPF-57-AC VACUUM LIFTER

(3) FORKLIFTS

HYSTER S155XL LPG FORKLIFT TRUCK - 15,500 Lb. Cap., 2-Stage Mast - 94.5" Max. Lift, OHG

1998 HYSTER S100XL2 LPG FORKLIFT TRUCK - 10,000 Lb. Cap., 2-Stage Mast - 111" Max. Lift, OHG, Cascade 70D-CF Fork Rotator/Spreaders

HYSTER S65XM LPG FORKLIFT TRUCK - 5,950 Lb. Cap., 2-Stage Mast - 126.4" Max. Lift, OHG, Cascade 50DCF23B Fork Rotator/Spreaders

AIR COMPRESSORS & DRYERS

2002 GARDNER DENVER ECPOME BASE MOUNTED ROTARY SCREW AIR COMPRESSOR
100 Hp w/Programmable Controls

1997 GARDNER DENVER EAPQMD PACKAGED ROTARY SCREW AIR COMPRESSOR - 100 Hp

(2) 1997 HANKISON PR500 REFRIGERATED COMPRESSED AIR DRYERS - 500 SCFM

100 TON TRUCK SCALE

1997 METTLER TOLEDO TRUCKMASTER 7531 ABOVE GROUND MODULAR RAISED PLATFORM TRUCK SCALE - 11' x 70", 100 Ton Cap. w/Toledo 8530 Inside Digital Weight Indicator

(2) DIGITAL PLATFORM SCALES

TOLEDO ELECTRONIC LOW PROFILE PLATFORM SCALE - 10,000 Lb. Cap., 5' x 5' w/Mettler Toledo Lynx Remote Digital Weight Indicator

METTLER TOLEDO LOW PROFILE ELECTRONIC PLATFORM SCALE - 20,000 Lb. Cap., 5' x 5' w/Mettler Toledo Lynx Remote Digital Weight Indicator

MAINTENANCE & SHOP EQUIPMENT

1999 Kent KGS410AHD Automatic Surface Grinder w/Power Down Feed; Magnetic Chuck - 16" x 40"; Hypertherm Max 100 Port. Plasma Cutting System w/Accessories; Power Team SPF-100 H-Frame Hyd. Press - 100 Ton Cap., 50" Between Uprights; Hypertherm Powermax 1650 G3 Series Portable Plasma Cutting System; Miller Millermatic 250 Welder; Enco 137-3175 Horizontal Band Saw; Oxy/Acetylene Torch Outfit; Stone 1285PM Port. Gas Engine Concrete Mixer; Aar Powerboss RS50E Electric Riding Floor Sweeper, Etc.

LABORATORY

1997 SPECTROLAB LABMB 058 SPARK ANALYSIS SPECTROMETER, w/H&K HK80F Bench Top Sample Mill

OFFICE FURNITURE

Desks, Credenzas, File Cabinets, Fax Machines, Copiers, Etc.
CCTV System Sony (16) Fixed Color Video Cameras w/Computer

**REAL ESTATE TO BE AUCTIONED as First Lot at 10:00am EDT
CASTING FACILITY • 31140 EDISON ROAD, NEW CARLISLE, IN**

**New in
1997**



PROPERTY HIGHLIGHTS: Total of 49,500 SF with 1,758 SF of office space • Situated on 37.61 acres • 28' - 32' ceiling heights • Built in 1998 • 4,000 amp/480 volt service • 8" floors • 1-15 Ton crane • Eight docks • Three grade-level overhead doors • T-5 lighting • Fire sprinklers • City water & sewer

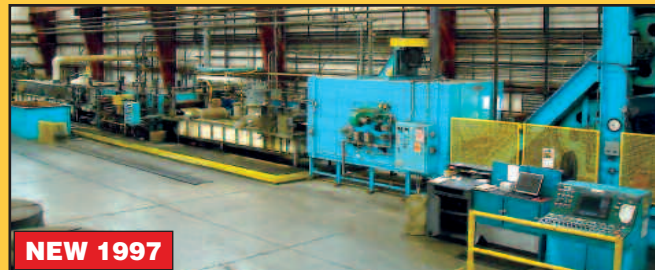
Real Estate Auctioneer, Brad B. Hooley, IN Lic. AU09200009

Register at www.BIDITUP.com and receive auction updates via email

FEATURED AUCTION
2 DAY SALE - 2 LOCATIONS
#1: Wed., June 22 at 10:00am EDT
COPPER/BRASS
ROLLING MILL EQUIPMENT
 Mishawaka, IN
#2: Thurs., June 23 at 10:00am EDT
CASTING EQUIPMENT
 New Carlisle, IN
LATE MODEL
COPPER/ BRASS ROLLING MILL,
CASTING EQUIPMENT
AND REAL ESTATE



CHAVANNE-BRUN REVERSING ROLLING MILL



NEW 1997

AEROMET CONTINUOUS COIL CLEANING/PICKLING LINE

BIDITUP™
 AUCTIONS & APPRAISALS WORLDWIDE
 11426 Ventura Boulevard
 Studio City, California 91604
 Phone: 818.508.7034
 Fax: 818.508.3025
 info@biditup.com
 Auctioneer, Steven R. Mattes
 IN Lic. AU19700033

MACHINERY & REAL ESTATE AUCTION, LOOK INSIDE!

ATTENTION: PLANT MANAGER
OR EQUIPMENT BUYER

For a Complete Listing of
 Upcoming Auctions Visit
www.BIDITUP.com
 Register Online and
 Receive Auction Updates
 and Information via E-mail.

CAN'T MAKE IT IN PERSON?

ONLINE BIDDING AVAILABLE:

BidSpotter.com

BIDITUP™
 AUCTIONS & APPRAISALS WORLDWIDE

FEATURED AUCTION 2 DAY SALE - 2 LOCATIONS

LATE MODEL COPPER/BRASS ROLLING MILL, CASTING EQUIPMENT AND REAL ESTATE

AUCTION #1: Wednesday, June 22 at 10:00am EDT
ROLLING MILL EQUIPMENT & REAL ESTATE

700 So. Union St., Mishawaka, IN 46544

AUCTION #2: Thursday, June 23 at 10:00am EDT
CASTING EQUIPMENT & REAL ESTATE

31140 Edison Road, New Carlisle, IN 46552



LODGING

MARRIOTT COURTYARD SOUTH BEND MISHAWAKA – Tel. (574) 273-9900
 4825 North Main St., Mishawaka, IN

INN AT THE OLD REPUBLIC – Tel. (574) 654-8199
 304 East Michigan St., New Carlisle, IN

QUALITY INN & SUITES – Tel. (574) 288-3800
 4124 Lincoln Way West, South Bend, IN

DIRECTIONS

FROM: SOUTH BEND REGIONAL AIRPORT – TO: NEW CARLISLE, IN (CASTING FACILITY)

Exit Airport to Lincoln Way West, Right, (West) on Lincoln Way .5 miles to Mayflower Road, Right (North) on Mayflower to Lincoln Way/US 20, West on US20 6.5 miles to Smilax Road, Left, (South) on Smilax 1 mile to Edison Rd., Right (West) on Edison 1.2 miles to Sale Site on left.

FROM: NEW CARLISLE, IN (CASTING FACILITY) – TO: MISHAWAKA, IN (ROLLING FACILITY)

Right (East) .7 miles on Edison Road to Larrison Road, Right (South) on Larrison 1.5 miles to IN 2, Left (East) on IN 26 miles to 20East/31South, 10 miles east on 20 to IN 331 North, Left (North) on 331N/Bendix 2 miles to 10th St., Right on 10th to sale site on Left.

FROM: SOUTH BEND REGIONAL AIRPORT – TO: MISHAWAKA, IN (ROLLING FACILITY)

Exit Airport to Lincoln Way West, Right, (West) on Lincoln Way .5 miles to Mayflower Road, Right (North) on Mayflower to Lincoln Way/US 20, 12 miles east on 20 to IN 331 North, Left (North) on 331N/Bendix 2 miles to 10th St., Right on 10th to sale site on Left.

FROM: MISHAWAKA, IN (ROLLING FACILITY) – TO: NEW CARLISLE, IN (CASTING FACILITY)

Left (South) on Union 2 miles to IN 20, Right (West) on IN 20 10 miles to IN 2/ Laporte exit, West on IN 2 6.5 miles to Larrison Road, Right (North) on Larrison 1.5 miles to Edison Road, Left (East) on Edison .5 miles to Sale Site on Left.

FINANCING AND LEASING AVAILABLE

CHARCOLE CAPITAL

Direct Lender - Equipment Financing & Leasing



ELFA

Contact **Tiffany Guimond (818) 508-7034,**
tguimond@biditup.com

FOR THE COMPLETE TERMS & CONDITIONS OF THE FEATURED AUCTION
 Please visit our website **www.BIDITUP.com**

Thinking of having an auction or need an appraisal?
CALL US AT 818.508.7034