



INDUSTRIAL ASSETS

REAL ESTATE • FINANCE • MACHINERY • AUCTIONS
industrialassets.com

ON-SITE & WEBCAST AUCTION

2-DAYS: Wednesday & Thursday, July 16 & 17 at 9:30am EDT Each Day

AUCTION LOCATION: The Clarion Hotel – The Belle, 1612 N. Dupont Hwy, New Castle, DE

ASSET LOCATIONS: 813 & 811 South Market Street, Wilmington, DE 19801

and 601 Garasches Lane, Wilmington, DE 19801

PREVIEW: Monday & Tuesday, July 14 & 15, 9:00am to 4:00pm or By Appointment

For More Information Please Call 818.508.7034

HELMARK/FALCON STEEL

Complete Closure of Two of the Nation's Leading Fabricator & Erector of Steel Structures Companies



2007 PEDDINGHAUS MDL. ABCM1250 AUTOMATED BURNING & COPING MACHINE



AMERICAN (TEREX) MDL. HC-110 100/110-TON HYDRAULIC CRAWLER CRANE

- ▶ LATE MODEL FABRICATION EQUIPMENT
- ▶ LARGE CAPACITY TOWER CRANES
- ▶ MOBILE ERECTOR CRANES
- ▶ LARGE CAPACITY ROLLING STOCK
- ▶ DUMP TRUCKS
- ▶ FORKLIFTS
- ▶ 1 MILLION+ POUNDS OF STEEL STOCK WITH CERTS
- ▶ LARGE QUANTITY OF ELECTRIC, AIR & HYD. TOOLS
- ▶ LARGE QUANTITY OF RIGGING

Online Bidding Available, Visit www.biditup.com for Complete Registration Information

Sale Conducted by:

BIDITUP 818.508.7034
www.biditup.com
BIDITUP AUCTIONS WORLDWIDE
AN INDUSTRIAL ASSETS COMPANY

In Conjunction with:

Maynards 248.569.9781
SINCE 1902 www.maynards.com

BEAM DRILL LINE

2007



2007 PEDDINGHAUS Mdl. BDL1250/9, S/N 65637, Beam Drill Line w/9 Spindles, Top & 2 Sides, Material Width 1,250mm, Maximum Beam Width 50", Maximum Flange Height 24", Spindle Advance/Retract Speed 33 FPM, Spindle Sensing Automatic, Number of Drill Spindles 9, Infinite Variable Spindle Speed, Programmable Feed Rate, Spindle Traversing Speed 33 FPM, Material Positioning Speed 130 FPM, Max. Dia. 1-1/4", Max Work Piece Weight 13,228 Lbs.



COPING MACHINE

2007



2007 PEDDINGHAUS Mdl. ABCM1250, S/N 65673, Automated Burning & Coping Machine w/Victor Fuel Torch



Online Bidding Available,
Visit www.biditup.com
for Complete
Registration Information

BEAM CAMBERING MACHINE

PEDDINGHAUS Mdl. BC-900, Beam Cambering Machine

BORING MILLS



KLING Mdl. Mill All, S/N 442760, Portable Horizontal Column Type Boring Mill



HILL ACME Mdl. L102-C, Portable Horizontal Column Type Boring Mill

IRON WORKERS



1977 PEDDINGHAUS Mdl. 210 Super 25G, S/N 4417952777005, 5-Station Mechanical Iron Worker

BEAM DRILL LINE



1990 PEDDINGHAUS Mdl. F-1154 30-Ton, S/N C-172, 30-Ton CNC Fabrication Center, Material Size 30" x 120" w/3-Position Fixed Tooling & Fagor CNC Controls



ONSITE BIDDER INSTRUCTIONS: \$500 cash minimum registration deposit or 25% of approximately bid amount (whichever is greater) via wire transfer ACH, cashier's check or bank letter to - Blank Signed Company Check (To be returned once final payment is received). Please refer to www.biditup.com for complete registration information.

ONLINE BIDDER INSTRUCTIONS: All internet bidders must register for this auction at least 72-hours prior to the sale date, if you do not you will not be approved. All internet bidders must provide a wire transfer deposit of approximately 25% of your planned spending amount or \$2,500 minimum, whichever is greater in order to be approved to bid. Those who do not post the deposit will not be approved. Period. Please refer to www.biditup.com for online bidder terms.

PLASMA CUTTERS & WELDERS

K.M. ARONSON Mdl. SBP120, S/N BP87046, 6-Head Plasma Cutting System w/Double Water Table, Size - 120, Burny CNC Control

ESAB Mdl. Power Cut 650, S/N PN-J950128 Plasma Cutter

OGDEN Mdl. DART 2102, S/N 1499 Gantry Welder w/(4) Lincoln Power Sources (2-DC-600 / 2- DC-1000)

2006 LINCOLN Mdl. Ranger K141904, S/N U1060608735 10,000-Watt Welder Generator Stick

(4) 2004 - 2006 LINCOLN Mdl. Ranger 10,000 K141904, S/N U1050105063, U1060608724, U1060608747, U1041111588 10,000-Watt Welder Generator Stick

(3) 2002 LINCOLN Mdl. Invertec V350-Pro, S/N U1020920480, U1020920562, U1020920565 Welders

(6) 2003 LINCOLN Mdl. Invertec V350-Pro, S/N U1030900878, U1030900880, U1030900882, U1030900895, U1031004702, U1031004703 Welders

(3) 2004 LINCOLN Mdl. Invertec V350-Pro, S/N U1040805032, U1040805033, U1040805037 Welders

(9) 2006 LINCOLN Mdl. Invertec V350-Pro K1728-5, S/N U1060210801, U1060210802, U1060210804, U1060605808, U1060605821, U1060605823, U1060605824, U1060400847, U1060210801 Welders

(2) LINCOLN Mdl. Invertec V300-Pro Welders

(4) 2008 LINCOLN Mdl. Invertec, S/N U1080708252, U1080608256, U1080608254, U1080608251 Welders

(5) 2008 LINCOLN Mdl. Invertec V-350-Pro, S/N U1080605601, U1080605598, U1080608249, U1080605597, U1080605599 Welders

NELSON Mdl. Series 6000 Mdl. 101, S/N 238878 Stud Welder

2004 CUMMINS Mdl. Vantage 500, S/N U1040621820 Welder

(6) 1999 LINCOLN Mdl. Multi-Weld 350, S/N U1990715282, U1990715298, U1999113900, U1991201648, U1990715287, U1990715289 Welders

(2) 2000 LINCOLN Mdl. Multi-Weld 350, S/N U1000113896, U1000113901 Welders

(2) 2007 LINCOLN Mdl. Multi-Weld 350, S/N U1071103690, U1071103693 Welders

2008 LINCOLN Mdl. Vantage 400, S/N U1080210536 Electric Welder

2008 LINCOLN Mdl. Ranger 250, S/N U1080213795 Electric Welder w/S/A Trailer

2008 LINCOLN Mdl. Ranger 250, S/N U1080213795 Electric Welder

2010 LINCOLN Mdl. Vantage 500, S/N U1100702279 Electric Welder

(2) 2009 LINCOLN Mdl. Ranger 225, S/N U1091200734, U1091200733 Gas Welders W/Carts

(4) 1999, 2003 & 2006 LINCOLN Mdl. Commander 300, S/N U1990702938, U1990702937, U1030212242, U1060608735 Diesel Welders

(2) 2006 CUMMINS Mdl. Vantage 300, S/N U1060404148 Diesel Welders

2010 LINCOLN Mdl. Vantage 500 K2686-1, S/N U1101108522 Diesel Welder w/Perkins Motor

(10) 2006 MILLER Mdl. XMT 350, S/N LG280046A, LG400124A, LG390237A, LG400127G, LG430840A, LG430833A, LG430316A, LG430319A, LG430310A, LG430320A Multi-Process Welders

(13) 2012 MILLER Mdl. XMT 350, S/N MC3111524, MC080123A, MC080124A, MC080228A, MC230150U, MC230151U, MC311148U, MC340243U, MC340262U, MC340238U, MC370431U, MC370435U, MC510229U Multi-Process Welders

(2) MILLER Submerged Arc Welding Systems (Interconnected as one), 4-Wire Feed Reels, Controller - M/N HDC1500DX, New 2010 w/(2) Weld Eng. "The Mighty-Mac" Flux Recovery / Vac Systems, M/N PS-3000, New 2013



K.M. ARONSON 6-HEAD PLASMA CUTTING SYSTEM



OGDEN GANTRY WELDER WITH (4) POWER SOURCES



NELSON STUD WELDER



2008

2008 LINCOLN ELECTRIC WELDER WITH S/A TRAILER



10 Available

2006

(10) 2006 MILLER MULTI-PROCESS WELDERS

BAND SAWS

HEM Mdl. WFL90LM-DC, S/N 656599 Large Capacity Manual Double Column Horizontal Metal Cutting Band Saw, 24" Rounds, 44" Flats



HEM MDL. WFL90LM-DC LRG. CAP. HORIZ. BAND SAW

HEM Mdl. V100 LM-3, S/N 784501, Vertical Traveling Carriage Metal Cutting Band Saw, Hydraulic, Coolant, In-feed & Out-feed Conveyors



HEM MDL. V100 LM-3 VERT. TRAV. CARRIAGE BAND SAW

SHEARS

2000 CONTROLLED AUTOMATION Mdl. ABI100, S/N 00-47, Angle & Flat Bar Punching & Shearing Machine: • Maximum Processing Length: 40' Standard (60' Optional) • Minimum Processing Length: 6' Angle • Maximum Angle Size: 8" x 8" x 1" • Minimum Angle Size: 1-1/2" x 1-1/2" x 3/16" • Minimum Material Thickness: 20 Gauge Flat Bar • Maximum Bar Size: 1" x 12" • Minimum Bar Size: 3/16" x 2-1/4" • (Maximum 20' Length) Channels (Web Punching Only) • Maximum Channel Size: 12" • Minimum Channel Size: 6"



CONTROLLED AUTOMATION MDL. ABL100 ANGLE & FLAT BAR PUNCHING & SHEARING MACHINE

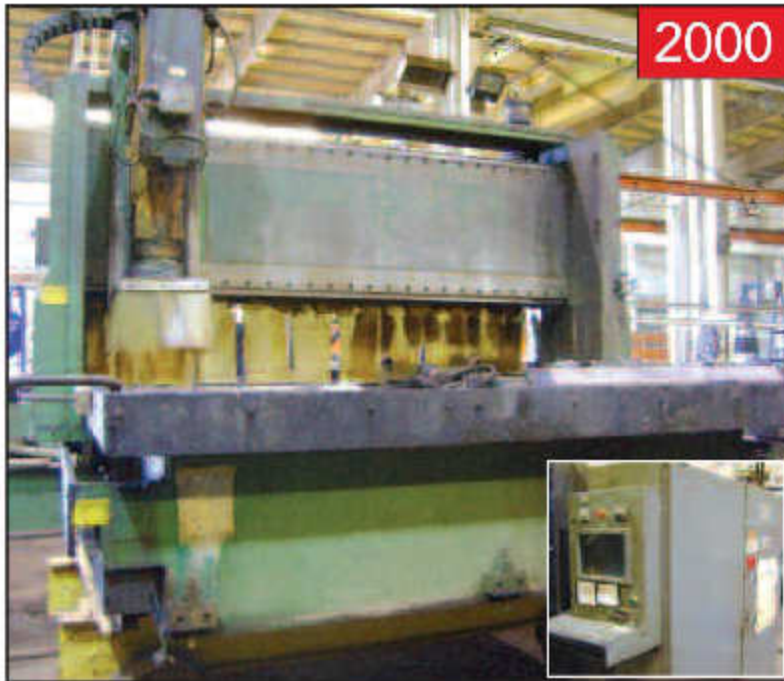
WYSONG Mdl. 7512, S/N N/A, 3/4" Mechanical Power Squaring Shear, (12) Hyd. Hold-Downs, 128" Squaring Arm, Foot Pedal

BLAST SYSTEMS

EQUIPMENT TECH. INC. Wheelabrator System, M/N PAC (Portable Abrasive Cleaning Sys., S/N 2B007, New 1981, w/Dust-Reclaim Unit Portable Pneumatic Shot Blast System



WYSONG MDL. 7512 3/4" MECH. POWER SQUARING SHEAR



QUICKMILL Mdl. 969615 QUICKDRILL VERT. GANTRY TYPE CNC MACH. CENTER



DMT 200KW DIESEL GENERATOR



STANDARD INDUSTRIAL Mdl. 325T HYD./MECH. PRESS BRAKE

MACHINING CENTERS

2000 QUICKMILL Mdl. 969615 Quickdrill, S/N 7011, Vertical Gantry Type CNC Machining Center. Table Size 96" x 96", Travels: X= 96", Y= 96", Z= 15", Spindle To Table 12". 3,000 Rpm, 35-Hp, 150 Psi Flood Coolant & CNC Control (No Tool Changer)

PRESS BRAKES

STANDARD INDUSTRIAL Mdl. 325T AB323-12. S/N 898729, Hydraulic / Mechanical Press Brake, 12' Overall, 126" Between Columns, 6-1/2" Throat, Flush Floor, Manual Back Gage, Palm Button Ped. Control

AIR COMPRESSORS & GENERATORS

1999 SULLIVAN Mdl. 750/825CFMDSL, S/N 560313, Air Compressor w/Engine Mdl. 4239DF, S/N CD4239D899431

SULLIVAN Mdl. D0185, S/N 211220, Air Compressor

INGERSOLL Mdl. P1852J0, S/N 186929U90329, Air Compressor

SULLIVAN Mdl. D2100CA5, S/N 15463A, Air Compressor

SULLAIR Mdl. 185DPQ-JD, S/N 004-129809, Diesel Air Compressor

(4) 2001 & 2000 INGERSOLL-RAND Mdl. P185WIR, S/N 319059UBI295, 320434UCI295, 31078BUCK295, 310780UK-300, Portable Air Compressors

INGERSOLL-RAND Mdl. P185WJD, S/N 382313, Air Compressor

CATERPILLAR Mdl. C18PKGG, S/N EKW00710, Standby Generator Set, 300 CFM Air Compressor, Fuel Tank & Custom Frame

RIGID Mdl. EX400SE52218483, S/N 39249, 10kw Generator

DMT 200KW Diesel Generator, Mdl. DMT230C, S/N's T13425824 & 870390; 250KVA, Skid Mounted, 570 Hours

INGERSOLL RAND Rotary Screw Air Compressor, 40 HP, 125 PSI, New 2006, M/N SSR-UPE-40-125, S/N PG2752U06214, w/Sound Enclosure

CURTIS Rotary Screw Air Compressor, 75 HP, 125 PSI, New 2007, M/N R/S 75D A/E E-25 2.333, S/N 19J070001

ZEKS HEAT-SINK AIR DRYER, 250 SCFM Cap., M/N 250HSGA400, S/N 338236 w/400 Gal. Cap. Vert. Steel Air Receiver - New 1998

BRUNNER Vert. Steel Air Receiver, New 2001, 400 Gal. Cap., 165 PSI @ 450 Deg. F, NB# 36582M

Trailer Mounted Portable Air Compressors

Asst. Portable Gas & Diesel Welder/Generators

MACHINE SHOP

RUSH MACHINERY Swivel-Head Drill Pointer, Coolant, M/N 380, S/N 2256, New 2001, **CLAUSING** Horiz. Mill, **GEKA** Ironworker, **HOMACHI** Engine Lathe, **BRIDGEPORT** 1-1/2 HP Vert. Mill, **JET** Bench-Type Shop Lathe, Asst. Work Tables, Supplies, Etc., Approx. (20) Asst. Magnetic Drills, Approx. (26) Asst. 9" Elec. Grinders, Approx. (50) Asst. 4" & 6" Elec. Grinders, Approx. (12) Asst. Elec. Die Grinders, Large Quantity of Asst. TC Guns, Asst. Pneumatic Hammers & Chippers, Approx. (55) Asst. Pneumatic Impact Guns, Large Quantity of Asst. Enerpac Type Hyd. Rams & Pullers w/Manual Power Pumps, Asst. Elec./Hyd. Power Packs, (9) Asst. Acetylene Track Burning Outfits

ASSORTED PLANT SUPPORT EQUIPMENT LOCATED THROUGHOUT THE FACILITIES INCLUDING, BUT NOT LIMITED TO: Work Benches, Ladders, Rigging (Chains, Straps, Etc.), Weld Rod Dryers, Parts, Heavy Duty Roller Conveyor / Roller Transfer Systems, Acetylene Outfits, Welding Screens, Portable / Skidded Fuel Tanks w/Pumps, Large Steel Shipping-Type Containers (Most for Storage Use), Coil Reels, Steel Stand and Bins, Fans, Shelving & Racking, Scaffold Systems, Gang Boxes & Much More!

2002



AMERICAN (TEREX) MDL. HC-110 100/110-TON HYDRAULIC CRAWLER CRANE



3 Available

FMC MDL. TG1900 TOWER CRANE W/160' OF TOWER



LINKBELT MDL. HC-218 CRANE, APPROX. 100-TON CAP



P&H 12-1/2-TON ROUGH TERRAIN HYD. CRANE

CRANES

2002 AMERICAN (TEREX) Mdl. HC-110, S/N AC-3900 Hydraulic Crawler Crane (110T) 100/110-Ton, Max. Boom Length 230', Maximum Jib Length 70'

(2) FAVCO Mdl. STD/750, S/N 100/18, 268 Tower Crane

(3) 1979 FMC Mdl. TG1900, S/N's 76G8-271C; 76G9-102C; 76H1-811C Tower Cranes w/160' Of Tower & External Jacking Frame, Mono-Rail Beam

1977 FMC LINKBELT Mdl. 1500, S/N 76G8-101A Tower Crane

FMC LINKBELT Mdl. TG1900, S/N 76h1-1210C Tower Crane

1972 LINKBELT Mdl. HC-218, S/N 18HA411 Crane, Capacity Approx. 100-Ton

1971 LINKBELT, S/N 19G1-261 Crane

1972 P&H Mdl. N/A, S/N 34266, 12-1/2-Ton Rough Terrain Hyd. Crane

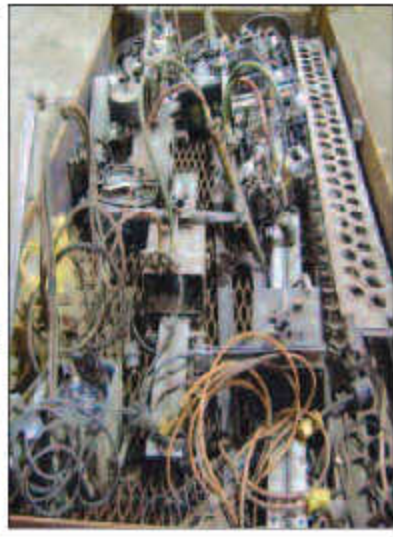
(4) Tower Crane Sections – Size: 117" x 117" x 40'

(114) Tower Crane Sections – Size: 117" x 117" x 13'-6" H (14')

(3) Tower Cranes (PARTS ONLY)



1 Million+ Lbs. of Assorted Steel (I-Beam, Channel, Flats)



**Large Quantity
of Welders, Grinders,
Generators & Support
Equipment**





1989

TAYLOR 15 TON CAP DIESEL FORKLIFT



YALE 30,000 LB. CAP FORKLIFT



SNORKEL 60' BOOM LIFT



1996

JCB LOADER/BACKHOE



1985

CATERPILLAR DIESEL FORKLIFT



YALE 8,000 LB. CAP FORKLIFT



1989

TCM 5,100 CAP FORKLIFT

ROLLING STOCK

1989 TAYLOR Mdl. TE 300M, S/N S-H6-19718 15-Ton Forklift, Diesel, 8' Forks, Cab
 TAYLOR Mdl. THD 330S, S/N P29953, 30,000 Lb. Capacity Fork Lift
 YALE Mdl. GDP300EANPCV161, S/N A877D01518W, 30,000 Lb. Cap. Forklift
 YALE Mdl. GDPP080IGNUBE093, S/N B813D02507T, 8,000 Lb. Capacity Forklift, Diesel, SS, 6' Forks, 3-Stage
 1989 TCM Mdl. FG30N7ST, S/N A2R150333 Forklift, 5,100 Lb. Cap., 3-Stage, SS, 4' Forks

1985 CATERPILLAR Mdl. N/A, S/N 72Y01027 Forklift, Capacity Unknown, 8' Forks, Diesel
 1995 SNORKEL Mdl. TB80, S/N 952262 80' Aerial Lift
 SNORKEL Mdl. TBA60, S/N 951164, 60' Boom Lift
 1996 JCB Mdl. 214 Series 2, S/N 446151, Loader / Backhoe, Cab, 7,814 Hours
 HIGHLAND Horiz. Steel Diesel Fuel Tank, Believed to be two Compartment, Approx. 3,000 – 4,000 Gal. Cap. w/(2) Gasboy Elec. Fuel Pumps



1988

4 Available

FONTAINE DROP DECK TRAILERS



1978

3 Available

STRICK 40' FLATBED TRAILER



1969

BROWN 40' FLATBED TRAILER



1998

DYNAWELD 26' EQUIPMENT TRAILER

TRAILERS

1980 FRUEHAUF, S/N FWT-076110 Stretch Trailer
 1977 FRUEHAUF, S/N FWX820612 Stretch Trailer
 1973 MONNON, S/N 20295 Trailer
 1969 BROWN, S/N M694256 Flatbed Trailer, 40', Sliding T/A
 (3) 1978 STRICK, S/N 215773, 212592, 212589 Flatbed Trailers, 40', Sliding T/A
 1977 STRICK Mdl. SE, S/N P61986 Trailer
 1977 STRICK, S/N COLZ392 Trailer
 1972 STRICK, S/N 144987 Trailer
 1970 STRICK, S/N 133268 Trailer
 1990 FONTAINE, S/N 49092 Drop Deck Trailer, T/A
 (4) 1988 FONTAINE Mdl. N/A, S/N 13N248208J1544617, 13N248208J1544618, 13N248208J1544619, 13N248208J1544620 Drop Deck Trailers, T/A
 (2) 1986 FONTAINE Mdl. N/A, S/N 13N-24220-9-61540260 & 13N-24220-9-61540261 Drop Deck Trailers

1990 FONTAINE, S/N 13N-4452C-1-L1548237 Telescopic Trailer
 1990 FONTAINE, S/N 49095 Stretch Trailer
 1990 FONTAINE, S/N 49094 Regular Trailer
 1967 FRUEHAUF, S/N ACLG 30036 600kw Generator Box w/Trailer
 (3) 1977 RAILMOBILE Mdl. N/A, S/N S34582, S34570, S34581 Trailers
 (3) 1999 DORSEY, S/N 1DTP16W26XG053124, 1DTP16W2XXG053126, 1DTP16W28XG053125 45' Flat Trailers
 1998 DORSEY, S/N 1DTP16W20WG052758 45' Flat Trailer
 1998 DYNAWELD, S/N 4U181AEX4W1X35867, Equipment Trailer, T/A, 26', Dovetail & Ramps
 1988 GREAT DANE, S/N 1GRDM9626JM089401 Drop Deck Trailer
 1984 GREAT DANE, S/N CXVZ540104 Trailer
 1967 ROGER, S/N 1989 Gooseneck Semi-Trailer
 2005 ECONOLINE, S/N 44XCT24256C009526 18' Trailer



2001 KENWORTH W-900-L TRACTOR



1998 FREIGHTLINER TRACTOR



1998 INTERNATIONAL DUMP/PLOW TRUCK



2002 CHEVROLET C-8500 STEEL BED STAKE BODY



1998 CHEVROLET C8500 24' FLATBED TRUCK



2007 CHEVROLET SILVERADO 3500 STAKE BODY



1993 FORD F250 8' STAKE BODY TRUCK



1980 MACK DUMP TRUCK



2005 CHEVROLET G3500 MECHANIC/SERVICE TRUCK



2008 FORD MDL F150 SUPER CREW 4X4 PICKUP



1991 DODGE W15 PICKUP TRUCK

VEHICLES

1998 CHEVROLET Mdl. C-Series Chassis & Cab C7H064, S/N 1GBT7H4C9WJ110242 Truck-Tractor

1988 MACK Mdl. R688ST, S/N 1M2N187Y6JW021815 Truck-Tractor

2001 KENWORTH Mdl. W-900-L, S/N 1XKWDB0X31J880599 Conv. Tractor, T/A, Dual 120 Gal. Alum. Fuel Tanks, Eaton-Fuller 8-Spd. Trans., Mileage - 142,661

1992 INTERNATIONAL Mdl. CB, S/N 11HSRKA5R7NH447553 Tractor

1998 FREIGHTLINER, S/N AFUYDZYB2WL950426 Conv. Tractor, T/A, Dual Fuel Tanks

1998 INTERNATIONAL Mdl. 4900, S/N 1HTSDAAR9WH532070 Dump/Plow Truck, Std. Cab., S/A, Eng: DT466E

1980 MACK Mdl. T/A, S/N U747251105 Dump Truck

1991 DODGE Mdl. W15, S/N 1B7HM16Y9MS261292 Pickup Truck

2002 CHEVROLET Mdl. C-8500, S/N 1GBT7H4C62J509698, 22' T/A Steel Bed Stake Body Truck, Diesel, Eaton-Fuller 8-Spd. Trans., Walco Lift Gate, GVWR - 54,600 Lbs., Mileage - 88,977 w/7.2L L6 Diesel Engine

1998 CHEVROLET C8500 T/A Flatbed Truck, 24' Bed, Diesel

2005 CHEVROLET Mdl. Commercial G3500, S/N 1GBHG31UX51264723 Commercial Conversion 2-Door Mechanic/Service Truck; w/6.0L V8 SFI Engine

2007 CHEVROLET Mdl. Colorado, S/N 1GCCS199578125649 2-Door 2x4 Truck w/Extended Cab & 2.9L I4 SFI Engine

2006 CHEVROLET Mdl. Silverado 3500, S/N 1GBJC34D66E206921 2-Door 2x4 Heavy Duty Pickup Truck w/Extended Cab & 6.6L V8 DI Engine

2007 CHEVROLET Mdl. Silverado 1500, S/N 1GCEC19Z77Z121294 4-Door Truck w/Extended Cab & 5.3L V8 SFI Engine

2007 CHEVROLET Mdl. Silverado 3500, S/N 1GBJC34U37E124534 2-Door Std. Cab, 2x4, 12' S/A Stake Body Truck, w/6.0L V8 SFI Engine

2007 CHEVROLET Mdl. Silverado 1500, S/N 1GCEC19XX8Z305533 4-Door Truck w/Extended Cab & 4.3L V6 MPI Engine

2010 CHEVROLET Mdl. Silverado 2500 LT, S/N 1GC5KVBG5AZ173162 4-Door Truck w/Extended Cab W/Plow; 6.0L V8 SFI Engine & Plow

2010 CHEVROLET Mdl. Silverado 1500 LS, S/N 3GCRCRE8AG193449 4-Door Truck w/Extended Cab & 4.8L V8 SFI Engine

2011 CHEVROLET Mdl. Silverado 1500 LT, S/N 3GCPCSE01BG278060 2x4 Crew Cab Truck w/5.3L V8 SFI Engine

2011 CHEVROLET Mdl. Silverado 1500 LT, S/N 3GCPCPEA1BG281417 2x4 Crew Cab Truck w/4.8L V8 SFI Engine

1993 FORD Mdl. F250, S/N 1FTHF25H8PNA60343 8' Stake Truck, S/A w/Black Racks

2000 FORD Mdl. F450 Super Duty Lariat XLT, S/N 1FDXF46F2YED72336 2-Door Heavy Duty Work Truck w/7.3L V8 FI Engine

2006 FORD Mdl. F150 Supercab XI, S/N 1FTRX12W76NB33165 4x4 Pickup Truck; w/4.6L V8 EFI Engine

2006 FORD Mdl. E350 Club Wagon, S/N 1FBNE31L96DA34588 Van w/5.4L V8 EFI Engine

2006 FORD Mdl. E350 Club Wagon, S/N 1FBSS31L87DA42470 Van w/5.4L V8 EFI Engine

2008 FORD Mdl. F150 Super Crew, S/N 1FTRW12W48KD94731, Crew Cab 4x4 Pickup Truck; Short Bed w/XL Triton 4.6L V8 EFI Engine

2008 LEXUS Mdl. LS460, S/N JTHBL46F285068607 4-Door Sedan; 4.6L V8 EFI Engine