

FOR SALE > INDUSTRIAL | LAND

Estevan Parcel E

521 6TH STREET, ESTEVAN, SK S4A 1A4



Shop & Office

Built in 2009 this property consists of a single storey steel frame shop and small office. The shop includes two ten tonne crane and was previously used for fabricating metal parts.

Details

- > Eight overhead doors facing south | One overhead door facing west
- > Fluorescent and incandescent lighting in office | Halogen lighting in shop
- > In floor radiant heat | Two 10 tonne overhead cranes

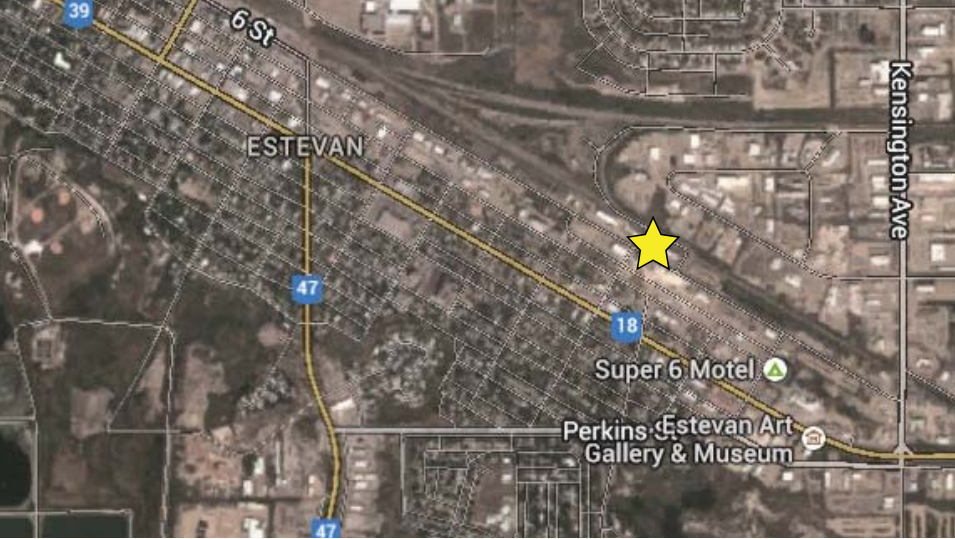
Building Size 10,000 SF

Land Size: 1.2 AC

Zoning: M1 (Light Industrial)

Sale Price \$1,800,000.00

COLLIERS INTERNATIONAL
2505 11th Avenue, Suite 200
Regina, SK S4P 0K6
www.collierscanada.com



Photos | Aerials



Contact Us



CHAD REICH BComm
Sales Associate
+1 306 737 5801

Chad.Reich@colliers.com



PAUL MEHLSSEN
Managing Partner | Sales Associate
+1 306 536 0041

Paul.Mehlsen@colliers.com



Hart Buck
Vice President | Investment
+1 604 681 4111

Hart.Buck@colliers.com

+1 306 789 8300

COLLIERS INTERNATIONAL
2505 11th Avenue, Suite 200
Regina, SK S4P 0K6

www.collierscanada.com