

FOR SALE > INDUSTRIAL | LAND

Estevan Parcel G

349 6TH STREET, ESTEVAN, SK S4A 1A4



Industrial Shop

Built in 2005 and 2006 this single storey property consists of a steel frame industrial shop and offices with an area of 8,096 SF. The shop includes two 5 ton cranes and was previously used for metal fabricating parts.

Details

- > Five (5) overhead doors facing south | One (1) overhead door facing east | One (1) overhead door facing west
- > Radiant and forced air heat | Halogen lighting | Cement flooring
- > Two five tonne cranes | Built in 2005 and 2006

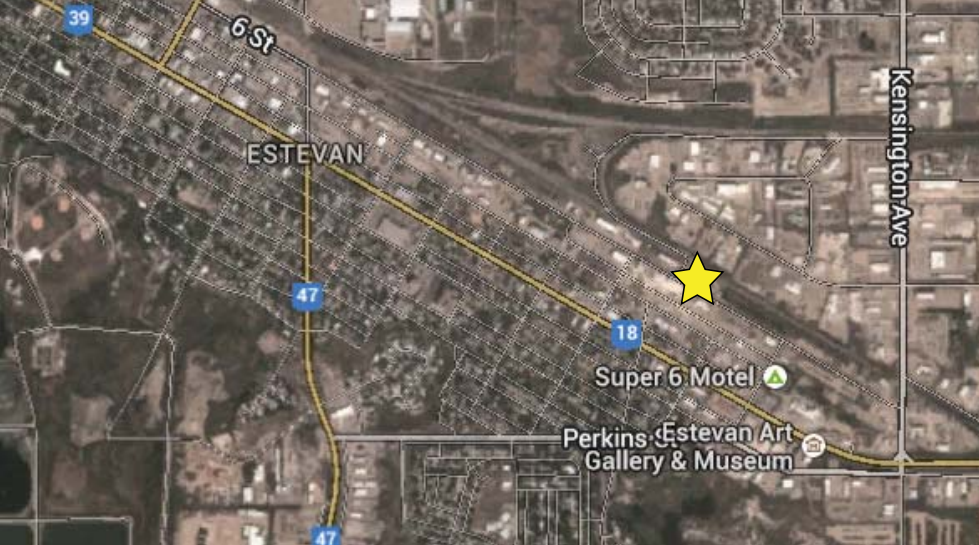
Building Size 8,096 SF

Land Size: 1.04 AC

Zoning: M1 (Light Industrial)

Sale Price \$1,500,000.00

COLLIERS INTERNATIONAL
2505 11th Avenue, Suite 200
Regina, SK S4P 0K6
www.collierscanada.com



Photos | Aerials



Contact Us



CHAD REICH BComm
Sales Associate
+1 306 737 5801

Chad.Reich@colliers.com



PAUL MEHLSSEN
Managing Partner | Sales Associate
+1 306 536 0041

Paul.Mehlsen@colliers.com



Hart Buck
Vice President | Investment
+1 604 681 4111

Hart.Buck@colliers.com

+1 306 789 8300

COLLIERS INTERNATIONAL
2505 11th Avenue, Suite 200
Regina, SK S4P 0K6
www.collierscanada.com