



INDUSTRIAL ASSETS

REAL ESTATE • FINANCE • MACHINERY • AUCTIONS
industrialassets.com

ON-SITE & WEBCAST AUCTION

Thursday, October 16th, 2014, Beginning at 10:00am EDT

LOCATION: 3701 Concorde Parkway, Suite 500, Chantilly, VA 20151

PREVIEW: Wednesday, October 15th, 9:00am to 4:00pm or By Appointment

For More Information Please Call 248.569.9781

CBL CHANTILLY BIOPHARMA LLC

STATE-OF-THE-ART LATE MODEL PHARMACEUTICALS MFG. FACILITY



GLATT GPCG-60 FLUID BED DRYER WITH 32" & 18" WURSTERS



KLOCKNER EAS UNIT DOS 2 EAS BLISTER PACK MACHINE



NIRO FIELDER PMA-10, PILOT SCALE HIGH SHEAR GRANULATOR



O'HARA LABCOAT III TABLET COATER

- ▶ FLUID BED DRYERS
- ▶ HOMOGENIZERS
- ▶ TABLET PRESSES
- ▶ MIXERS, GRANULATORS, BLENDEES & ASSOCIATED EQUIPMENT
- ▶ PACKAGING EQUIPMENT
- ▶ LAB EQUIPMENT
- ▶ MISCELLANEOUS EQUIPMENT
- ▶ HAMMERMILLS
- ▶ TOOL ROOM EQUIPMENT
- ▶ GENERATORS, AIR COMPRESSORS, CHILLERS & BOILERS
- ▶ MOBILE EQUIPMENT & VEHICLES
- ▶ FLOOR & TABLE TOP SCALES
- ▶ OFFICE FURNITURE & MORE!

Online Bidding Available, Visit www.biditup.com for Complete Registration Information

Sale Conducted by:



818.508.7034
www.biditup.com

BIDITUP AUCTIONS WORLDWIDE
AN INDUSTRIAL ASSETS COMPANY

In Conjunction with:



248.569.9781
www.maynards.com

SINCE 1902



GLATT GPCG-60 FLUID BED DRYER WITH 32" & 18" WURSTERS



BEE INTERNATIONAL DEEBEE 2000P HIGH PRESSURE HOMOGENIZER



GLATT GPCG-3 FLUID BED DRYER



BEE INTERNATIONAL DEEBEE 2000 HIGH PRESSURE HOMOGENIZER



KILLIAN T300 S.S. TABLET PRESS



COURTOY R190F S.S. TABLET PRESS



PICCOLA B/10 S.S. TABLET PRESS



O'HARA LABCOAT 1 COATING PAN



BRABENDER DDSR20N/60 FEEDER

FLUID BED DRYERS

GLATT MDL. GPCG-60, FLUID BED DRYER, S/N CN-6492 (New 1997), w/ 18" Wurster, 32" Wurster, GEA Insert, 220-Liter Granulation; Insert w/ Bowl, Arcadia Mdl. AE-VSP11 Solution Pump, S/NW-4613, Windows Based Control, w/ PC Mounted in Stainless Steel Enclosure

GLATT AIR TECHNIQUES MDL. GBCG-3, STAINLESS STEEL FORMULATION UNIT FLUID BED DRYER, S/N 6816

GLATT MDL. GPCG-3, FLUID BED DRYER, S/N 6535

HOMOGENIZERS

BEE INTERNATIONAL MDL. DEEBEE 2000P, HIGH PRESSURE HOMOGENIZER, S/N 2514

BEE INTERNATIONAL MDL. DEEBEE 2000, HIGH PRESSURE HOMOGENIZER, S/N 2500

TABLET PRESSES & RELATED EQUIPMENT

KILLIAN MDL. T300, 32-STATION STAINLESS STEEL TABLET PRESS, S/N 32305 (New 1995) Li

KILLIAN MDL. T-300 TABLET PRESS, S/N 32305 (New 1995)

COURTOY MDL. R190F, 30-STATION B-TOOLED STAINLESS STEEL TABLET PRESS, S/N CAR19005 (New 1998)

PICCOLA MDL. B/10, 10-STATION STAINLESS STEEL TABLET PRESS, S/N039, w/ Mdl. PC30SMI Data Acquisition Server

O'HARA MDL. LABCOAT 1 COATING PAN, S/N 3707, w/ 9", 12", 15" Pans, HPAC Unit

BRABENDER MDL. DDSR20N/60, COURTOY FEEDER LOOP SYSTEM, S/N N/A, w/ Stainless Steel Portable Base, .18-kW Drives

(2) STOKES MDL. DDS-2 TABLET PRESS, S/N AS1705 & S/N AS1705

TOOLING FOR TABLET PRESS, T 300 & COURTOY, Consisting of: Approximately (117) Sets of "B" Tooling, Approximately (22) Sets of "D" Tooling, (7) Sets of 7" Processing Heads, (7) Sets of 5" Processing Heads, (4) Sets of 3" Processing Heads



COLETTE GRAL300 STAINLESS STEEL JACKETED MIXER GRANULATOR



NIRO FIELDER PMA-10, PILOT SCALE HIGH SHEAR GRANULATOR



PATTERSON KELLEY 2-CU. FT. TWIN V-BLENDER



FITZPATRICK D6A S.S. HAMMERMILL



NOVA 300 GAL. S.S. MIXING TANK



KLOCKNER EAS UNIT DOS 2 EAS BLISTER PACK MACHINE



MULTIPACK F43 SHRINK WRAP MACHINE

MIXERS, GRANULATORS, BLENDERS & ASSOCIATED EQUIPMENT

COLETTE MDL. GRAL300, STAINLESS STEEL JACKETED MIXER GRANULATOR, S/N 88MGHIA30002, w/ Allen-Bradley Panel View 100 PLC Control, Bosch 50-HP Hydraulic Unit, Sterlco Mdl. M2ATemperature Controller

NIRO FIELDER MDL. PMA-10, PILOT SCALE HIGH SHEAR GRANULATOR, S/N 8100, Explosion Proof Rated

NIRO FIELDER MDL. PMA65, MIXER/ GRANULATOR, S/N 8214, w/ Control Panel

NIRO MDL. 150, STAINLESS STEEL MIXER GRANULATOR

PATTERSON KELLEY 10-CU. FT. TWIN SHELL V-BLENDER, S/N 181092, w/ I-Bar

PATTERSON KELLEY MDL. 2CUFT, 2-CU. FT. STAINLESS STEEL TWIN SHELL V BLENDER, S/N C423342-2, w/ Intensifier Bar

PATTERSON KELLEY 2-CU. FT. STAINLESS STEEL TWIN SHELL V-BLENDER, S/N 273570

PATTERSON KELLEY 2-CU. FT. TWIN SHELL V-BLENDER, S/N N/A

PATTERSON KELLEY MDL. 16QT, 16-QUART TWIN SHELL STAINLESS STEEL DRY BLENDER, S/N C281230, w/ Intensifier Bar

LEE MDL. 75DBT, 75-GALLON STAINLESS STEEL SOLUTION TANK, S/N 1106-1-2, w/ Lightnin Mdl. V5CZ5A Mixer, S/N R997282880501

LEE MDL. 75DPT, 75-GALLON STAINLESS STEEL SOLUTION TANK, S/N 1106-1-2 (New 1999), w/ Lightnin Mdl. V5CZ5A Mixer, S/NR997282880502

LEE MDL. 30DVT, 30-GALLON STAINLESS STEEL SOLUTION TANK & MIXER PREPARATION SYSTEM, S/N 32406-1 (New 1999), w/ Lightnin Mdl. X5C-33A 1/3-HP Mixer, S/N R03872274PS, Silverson 8X Air High Shear Mixer

NOVA 300-GALLON STAINLESS STEEL MIXING TANK, S/N 6516 (New 1998), w/ Lightnin Mdl. V5C558 Mixer, S/N R9871087900501

GAST WATIN MARLOW SOLUTION MIXER

KEITH MCKAY 1-CU. FT. V-BLENDER, S/N 737, w/ Intensifier Bar

PACKAGING EQUIPMENT

KLOCKNER MDL. MEDIPACK CP-2L BLISTER PACK MACHINE, S/N 94KM009

KLOCKNER MDL. EAS UNIT DOS 2, EAS BLISTER PACK MACHINE, S/N 423, w/18 Partial Sets of Tooling, Pin Hole Detector & (2) Full Sets of Tooling, Chiller

MULTIPACK MDL. F43, MULTI PACK SHRINK WRAP MACHINE, S/N 97031 (New 1997), w/ Mdl. E600 Heat Shrink Tunnel, S/N 99068 (New 1999)



WATERS MDL. MICROMASS MMZQ SPECTROMETER



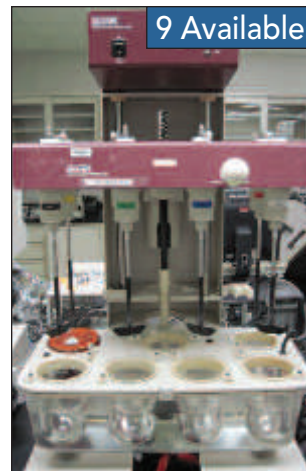
WATERS MDL. ACQUITY HPLC



NICOLET MDL. NEXUS 670 SPECTROPHOTOMETER



THERMO MDL. NXR SPECTROPHOTOMETER



DISTEK MDL. 2100B DISSOLUTION SYSTEM

9 Available



AGILENT MDL. 6890 GAS CHROMATOGRAPH



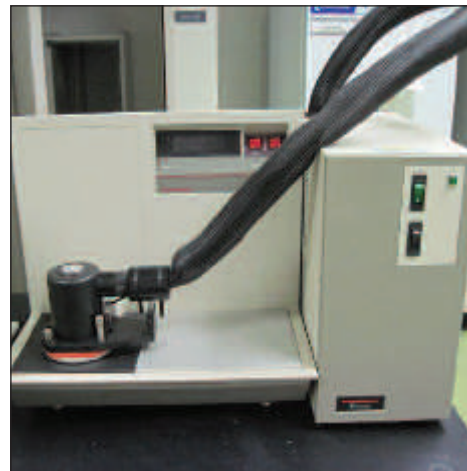
HANSEN MULTIFILL DISSOLUTION SAMPLER

3 Available



JR JOHANSON FLOW-36 INDICIZER

2 Available



TA INSTRUMENTS MDL. 2920, THERMO ANALYZER

LAB EQUIPMENT

AMRAY MDL. 1000B, SCANNING ELECTRON MICROSCOPE, w/ EDAX Mdl. Leap Amray 1600T Detector

WATERS MDL. MICROMASS MMZQ, MASS SPECTROMETER, w/ Corona ESA Plus

WATERS MDL. ACQUITY, HPLC

(10) WATERS MDL. 2690/2695, HPLC UNITS

(6) AGILENT MDL. 8453, UV-VIS SPECTROPHOTOMETERS

NICOLET MDL. NEXUS 670 SPECTROPHOTOMETER

THERMO MDL. NXR SPECTROPHOTOMETER

NICOLET MDL. AVATAR 360 SPECTROPHOTOMETER

(9) DISTEK MDL. 2100B, DISSOLUTION SYSTEMS

(2) DISTEK MDL. EVOLUTION 4300, DISSOLUTION SAMPLERS

AGILENT MDL. 6890 GAS CHROMATOGRAPH, S/N N/A, w/ G1888 Network Head Space Sampler

AGILENT MDL. 6890 GAS CHROMATOGRAPH

AGILENT MDL. 6890N GAS CHROMATOGRAPH

(2) AGILENT MDL. 7694, GAS CHROMATOGRAPH HEAD SPACE SAMPLERS

(4) HANSEN MDL. AUTO PLUS, MAXIMIZER DISSOLUTION SAMPLERS

(3) HANSEN MDL. AUTO PLUS, MULTIFILL DISSOLUTION SAMPLERS

(2) JR JOHANSON MDL. FLOW-36, INDICIZERS

TA INSTRUMENTS MDL. 2950, THERMO GRAVIMETRIC ANALYZER

TA INSTRUMENTS MDL. 2920, THERMO ANALYZER

MALVERN MDL. MASTER SIZER 2000, PARTICLE SIZE ANALYZER, S/N N/A, w/ Hydro 200S, Sirocco 2000, Hydro 2000UP

TEXTURE TECHNOLOGIES MDL. TAXT PLUS, TEXTURE ANALYZER, w/ Stable Micro Systems Control

ALEX&ER MDL. WP120X40V, ROLLER COMPACTOR, S/N N/A, w/ Allen-Bradley PanelView 600 PLC Control

QUADRO MDL. QUADRO YTRON MIXER

LME LAB MIXER / EXTRUDER, S/N 162448-0404

GLEN MILLS MDL. TURBULA T2C, MIXER/ BLENDER, S/N 951142

PATTERSON KELLEY MDL. BLENDMASTER, STAINLESS STEEL LAB V-BLENDER, S/N C444766

DENTON MDL. DESK II, SPUTTER COATER, for SEM

OLYMPUS MDL. SZX16, POLARIZED LIGHT MICROSCOPE

OLYMPUS MDL. BX50, STEREO ZOOM MICROSCOPE

LINCOLN MDL. LTS350, HOT STAGE STEREO STAGE MICROSCOPE

THERMO NICOLET MDL. CONTINUUM 912A0429FTIR ANALYZER, for Microscope

MANUFACTURER UNKNOWN MDL. M6C-10, BINOCULAR MICROSCOPE

SMS MDL. ADVANTAGE DYNAMIC, VAPOR SORPTION MACHINE

PARKER BALSTON MDL. FID2500, FID GAS STATION, S/N 111108

QUANTACHROME MDL. DUAL AUTOTAB-1, TAP DENSITY ANALYZER, S/N 92122901

VWR SCIENTIFIC MDL. FM130FM, LAB OVEN, S/N N/A

ECONOTHERM MDL. 51220126, LAB OVEN, S/N 698040927

HOBART STAINLESS STEEL BENCH TOP MIXER

VANKEL FRIABILITY TESTER, S/N N/A

DR SCHLEUNIGER MDL. 6D, TABLET TESTER

(2) VWR SCIENTIFIC MDL. 1565 INCUBATORS

APV MDL. MP19-TC, 19MM COMPOUNDER, S/N NEF980003

ZED INDUSTRIES MDL. 15DLX, 14" X 15" HEAT TUNNEL, S/N 796M2859

BROOKFIELD MDL. DV-III, ULTRA VISCOMETER

(2) FISHER MDL. 1013S WATER BATHS

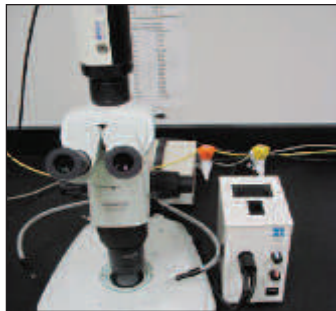
FISHER MDL. 334260 REFRACTOMETER

JASCO MDL. P-1020, POLARIMETER

(3) LABCONCO 6'W X 2'D X 3'H LABORATORY FUME HOODS



VIEW OF MICROSCOPES



OLYMPUS MDL. SZX16, POLARIZED LIGHT MICROSCOPE



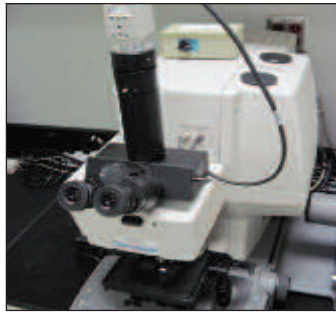
LME LAB MIXER / EXTRUDER



PATTERSON KELLEY MDL. BLENDMASTER, STAINLESS STEEL LAB V-BLENDER



MALVERN MDL. MASTER SIZER 2000, PARTICLE SIZE ANALYZER



THERMO NICOLET MDL. CONTINUUM 912A0429FTIR ANALYZER



LABCONCO LABORATORY FUME HOODS



WATERS MDL. 717, HEAD SPACE SAMPLER



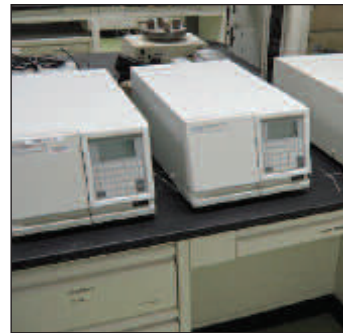
VIEW OF AGILENT SPECTROPHOTOMETERS



LANCER MDL. 1300UPSS, GLASSWARE WASHER/ DRYER



VIEW OF WATERS ABSORBANCE DETECTOR & SEPERATION MODULE



VIEW OF WATERS ABSORBANCE DETECTORS

LAB EQUIPMENT

- FISHER MDL. 280A, VACUUM OVEN
- METTLER TOLEDO MDL. A3, HALOGEN MOISTURE METER 166. 1- MICRO SEAL LTD SPINNING RIFLER, S/N N/A
- (2) VANKEL MDL. VK5010 MONITORS
- SIEVERS MDL. 400DI, PHARMACEUTICAL ONLINE TOC SYSTEM, w/ PLC Controls, 240-Gallon Poly Tank, Water Softener
- WATERS MDL. 717, HEAD SPACE SAMPLER
- SRS MDL. OPTIMELT, MELTING POINT APPARATUS
- PRECISION MDL. 45EG, LAB OVEN, S/N N/A
- PRECISION MDL. 25EG, LAB OVEN, S/N N/A
- FISHER MDL. ISOTEMP 500, LAB OVEN, S/N N/A
- ATM MDL. L3P, SONIC SIFTER
- ACUMET MDL. 50 PH METER
- (2) BURELL WRIST SHAKERS
- (2) SANYO MDL. MPR-414F REFRIGERATOR/FREEZERS
- LEAP TECHNOLOGIES MDL. OPT-DISS, FIBER OPTIC SPECTROPHOTOMETER
- METTLER TOLEDO MDL. DF53, AUTOMATED TITRATOR
- METTLER TOLEDO MDL. DL38, KARL FISCHER TITRATOR
- TA INSTRUMENTS LNCA ANALYZER, S/N N/A
- ESA NITROGEN GENERATOR
- NEDERMAN FUME COLLECTOR
- VARIAN MDL. VIDDIS, DISSOLUTION APPARATUS
- LANCER MDL. 1300, GLASSWARE DRYER, S/N N/A
- LANCER MDL. 1300UP, GLASSWARE WASHER
- LANCER MDL. 1300UPSS, GLASSWARE WASHER/ DRYER

- ROBOT COUPE MDL. RS110V, STAINLESS STEEL 4-QT FOOD PROCESSOR, S/N JL-0124
- OCTAGON DIGITAL SIEVE, S/N 4788-02
- UMANG MDL. SPHERONIZER 250, SINGLE SCREW STAINLESS STEEL EXTRUDER, S/N USPH-250/013
- ACCUTEK SEMI AUTOMATIC INDUCTION SEALER, S/N 06GA/023
- CAFRAMO MDL. BDC2002 MIXER, S/N 20021521
- LOT OF EQUIPMENT, THROUGHOUT LABORATORY AREA, CONSISTING OF:
 - (4) Agilent Mdl. 8453, Samplers; Mettler Toledo Mdl. AG104, Balance; Mettler Toledo Mdl. AG245, Balance; Distek Mdl. VIP4400, Vessel Washer; Nirs Systems Mdl. Pharma, Smart Probe; Sievers Mixer; Fisher Scientific Mdl. Isotemp 1013S, Laboratory Oven; Waters Mdl. G1530A, Gas Chromatograph, w/ Mdl. 515 Pump & 2487 Dual Absorbance Detector; Waters Mdl. 717, Autosampler; Waters Mdl. 2487, Dual Absorbance Detector, w/ Mdl. 717 Autosampler & 515 Pump; Waters Mdl. 2487, Dual Absorbance Detector, w/ Mdl. 717 Autosampler & 515 Pump; Waters Mdl. 2690, Dual Absorbance Detector, w/ 996 PDA Detector; Waters Water Bath; Waters Mdl. 2487, Dual Absorbance Detector, w/ Mdl. 717 Autosampler & 515 Pump; Waters Mdl. 996PDA, Detector, w/ Mdl. 515 Pump & 717 Autosampler; Waters Mdl. 2487, Dual Absorbance Detector, w/ Mdl. 515 Pump, 717 Autosampler; Waters Mdl. 2487, Dual Absorbance Detector, w/ Mdl. 717 Autosampler; Sievers Mdl. 800, Water Bath; Waters Transfer Module; Thermoline Mdl. 1500, Muffle Furnace; Fisher Mdl. Isotemp 500, Incubator; Precision Mdl. 19, Oven; Mettler Toledo Mdl. D35, Karl Fischer Titrator; Hansen Mdl. SR8 Plus, Water Bath; (2) Hansen Mdl. SR8, Water Baths; Hansen Dissolution System; Thermo Instruments Mdl. Unicam 300, Spectrophotometer; Thermo Scientific Type Evolution 300 LS, Spectrophotometer, S/N 10303001; (2) Waters Mdl. 515, Pumps; Wheatons Split Stream Auto Still; Denver Mdl. IR200, Moisture Meter; #1783 Hemco Mdl. 11111, Sampling Booth, S/N 424U10-0198, w/ #1478 Mettler Toledo Scale

2005



RAYTHEON S.S. SPHERONIZING BEAD TOWER



O'HARA LABCOAT III TABLET COATER



SWECO DECK SCREENER



ENVIRONMENTAL SPECIALTIES STABILITY CHAMBER



DENIOS 10' X 28' EXTERNAL HAZMAT STORAGE CONTAINER



EXTRACT TECHNOLOGIES S.S. RECIRCULATORY DOWN FLOW BOOTH



QUADRO COMIL 194S S.S. VARIABLE SPEED SIZE REDUCER



HARNETT DELTA 385 PHARMACEUTICAL PRINTER



CINTEX MIH0401 S.S. METAL DETECTOR



SAFE LINE XS76X22BECONRC METAL DETECTOR



PHARMA DV500 TABLET DEDUSTER

MISCELLANEOUS EQUIPMENT

RAYTHEON CUSTOM DESIGNED & FABRICATED STAINLESS STEEL SPHERONIZING BEAD TOWER, S/N N/A, w/ KTron Mdl. KPH-MVKT35 Power Feeder, S/N 566860 (New 2005), Control Panel, Yale 1-Ton Jib Crane w/ 1-Ton Hoist, Mezzanine Structure, Stainless Steel Air Duct, Vibrascrew Screw Feeders, (2) Fuisz 10" Spheronizing Heads

O'HARA MDL. LABCOAT III, TABLET COATER, S/N 3446, w/ Schlick 3-Nozzle Spray System, Rice Lake 50-Lb. Scale, (3) Pans, Xycom Control, H Vac Unit, Dust Collection Unit, 15", 24", 36" Pans

SWECO MDL. XS485888, 48" 3-DECK SCREENER, S/N 676158-A1297, w/Spare Screens

SWECO MDL. XS40S664, 40" DIA. 3-DECK SCREENER, S/N 644300-A996

ENVIRONMENTAL SPECIALTIES MDL. ES2000, BENCH TOP STABILITY CHAMBER, S/N 0305072028, 20 to 40°C Operating Temperatures

ENVIRONMENTAL SPECIALTIES MDL. ES2000SDM-DW, 74-CU. FT. STABILITY CHAMBER, S/N 0305072027, 0 to 70°C Operating Temperatures

(3) ENVIRONMENTAL SPECIALTIES WALK IN STABILITY CHAMBERS

MBRAUN MDL. LABMASTER 130, 2-HOLE ENVIRONMENTAL CABINET, S/N LBM116 (New 1993)

OSMO MDL. 23G-HR (PA) 6000 REVERSE OSMOSIS SYSTEM, S/N 97-1161141-1 (New 1997), w/ Neu-Ion Mdl. USP-23 Purified Water Control Panel, Sivers Pharmaceutical Online TOC Analyzer, (2) Filters, Stainless Steel Holding Tanks, Pumps, Heat Exchanger

CUSTOM VAULT 44' X 12' X 8 1/2' H MODULAR CONCRETE VAULT, S/N 9389 (New 2012), w/Mdl. SC4878 Steel Combination Door

DENIOS 10' X 28' EXTERNAL HAZMAT STORAGE CONTAINER, S/N 971100, w/Fire Suppression System

DENIOS 10' X 14' EXTERNAL HAZMAT STORAGE CONTAINER, S/N 971130, w/Fire Suppression System

EXTRACT TECHNOLOGIES STAINLESS STEEL RECIRCULATORY DOWN FLOW BOOTH, w/ Mettler Toledo Scale

TRACO MDL. 1620ACD L-BAR SEALER, S/N 15701 (New 2009)

HARNETT MDL. DELTA 385, PHARMACEUTICAL PRINTING MACHINE, S/N N/A

METRO MDL. C199-HM2000, HEATING CABINET, S/N 02340 (New 1992)

DT PACKAGING SYSTEMS MDL. SWIFT COUNT, TABLET COUNTER, S/N M4207

STAINLESS STEEL WASH BASIN, w/Runoff Boards & Spray Heads

L&R ULTRASONICS MDL. 650H, ULTRASONIC WATER BATH

QUADRO MDL. COMIL 194S, STAINLESS STEEL VARIABLE SPEED SIZE REDUCER

UNIVERSAL MDL. 301FS, SEMI-AUTOMATIC BLISTER FORMER, S/N 20071202 (New 2007)

KEY TABLET DEDUSTER, S/N TD101W970315

KEY MDL. TD101E, TABLET DEDUSTER, S/N 981290

CINTEX MDL. MIH0401 AUTO SURGE II, STAINLESS STEEL METAL DETECTOR, S/N 1243, w/Conveyor

SAFE LINE MDL. XS76X22BECONRC METAL DETECTOR, S/N 23435

SWECO 18" DIA. STAINLESS STEEL SCREENER, w/ 20-140 Mesh Screens, 50 Total

PHARMA MDL. DV500, TABLET DEDUSTER, S/N 0404602S

GLOBE PHARMA MDL. EF2, AUTO. TABLET FRIABILITY TESTER, S/N 0507186XD (New 2005)

SCHLEUNIGER MDL. 8M, TABLET HARDNESS TESTER, S/N 2008

LABCONCO MDL. BSC297, BLISTER SEALER, S/N 705648, Mounted on Stainless Steel Base

LOT MISCELLANEOUS EQUIPMENT THROUGHOUT BUILDING, Consisting of:(3) Masterflex Mdl. 7523-70, Pumps; Masterflex Mdl. 7523-30, Pump Masterflex Mdl. 7569-00, Pump; #2168 Lightnin Mdl. TS-2510, Mixer, S/N 100255; #2202 Caframo Mdl. BDC2002, Mixer, S/N 20021307; #2201 Caframo Mdl. BDC2002, Mixer, S/N 2002116; #2205 Lightnin Mdl. GIU05A, Mixer, S/N R0553477201; #2204 Lightnin Mdl. 1U05A, Mixer, S/N R0553478301; #2227 Silverson Mdl. L2AIR, Mixer, S/N 3859; #1063 Caframo Mdl. RZR1, Mixer, S/N 39319549; #1163 IKA Mdl. T25S1, Mixer, S/N 823748



LEE 75 & 30 GAL. S.S. SOLUTION TANKS



JET 1860-3PGH 18" X 60" ENGINE LATHE



CHEVALIER 3-HP MILL



DAYTON BANDSAW



OLYMPIAN 100-KW EMERGENCY GENERATOR



SULLAIR 100-HP ROTARY SCREW AIR COMPRESSOR



SULLAIR REF AIR DRYER



TRANE RTAA400, 400-TON AIR COOLED PROCESS CHILLER



FULTON NAT. GAS BOILER



GENIE 500-LB. SCISSOR LIFT

HAMMERMILLS

FITZPATRICK MDL. M5A, 3-HP STAINLESS STEEL HAMMERMILL, S/N 20011, Explosion Proof Construction

FITZPATRICK MDL. D6A, STAINLESS STEEL HAMMERMILL, S/N 10837

QUADRO MDL. 197S, COMIL MILL, S/N 197-0490

TOOL ROOM EQUIPMENT

JET MDL. 1860-3PGH, 18" X 60" GEARED HEAD ENGINE LATHE, S/N 321323, Spindle Speeds to 1600-RPM, 10" 3-Jaw Chuck, Inch Threading Shop-Task Mill/Lathe/Drill, S/N 91796

CHEVALIER MDL. FM35KP, 3-HP VERTICAL MILLING MACHINE, S/N KP895004

JET MDL. DP-17MF, 17" FLOOR TYPE DRILL, S/N 354169

DAYTON MDL. 4TK02, 18" VERTICAL METAL CUTTING BAND SAW, S/N 9903

WILTON MDL. 4200A, VERTICAL/HORIZONTAL S&ER, S/N 911134

GENERATORS, AIR COMPRESSORS, CHILLERS & BOILERS

CATERPILLAR MDL. G3406, 150-KW EMERGENCY GENERATOR, S/N 4FD02365

OLYMPIAN MDL. G100F1, 100-KW EMERGENCY GENERATOR, S/N E2556A/001

SULLAIR MDL. VC-200-100-H/A, 100-HP ROTARY SCREW AIR COMPRESSOR, S/N 003-134592

SULLAIR MDL. VC-200-100-H/A, 100-HP ROTARY SCREW AIR COMPRESSOR, S/N 003-134591

(2) SULLAIR 75-HP ROTARY SCREW AIR COMPRESSOR, S/N 003-133767 & S/N 003-133766

SULLAIR MDL. SDE820S, REFRIGERATED AIR DRYER, S/N 9079

SULLAIR MDL. SM640-DS, REFRIGERATED AIR DRYER, S/N 31270A (New 2004)

TRANE MDL. RTAA400, 400-TON AIR COOLED PROCESS CHILLER, S/N U97J05437 (New 1997)

(2) LATTNER HIGH EFFICIENCY BOILERS, S/N 83859, 83856 (New 1997), 67-KW Heating Surface, 150-MAWP

FULTON MDL. ICS60, 2,070-LB./HR. NATURAL GAS FIRED PACKAGE VERTICAL TUBELESS STEAM BOILER, S/N 100154 (New 2005)

FULTON MDL. ICS60, 2,070-LB./HR. NATURAL GAS FIRED PACKAGE VERTICAL TUBELESS STEAM BOILER, S/N 100151 (New 2005)

FULTON MDL. ICS-630-A, NATURAL GAS FIRED BOILER, S/N 77523

LATTNER HIGH EFFICIENCY BOILER, S/N 51389

LIFE LINE MDL. 4107103582, 5-HP CENTRAL VACUUM SYSTEM, S/N 248857-1PW (New 2009)

PVI MDL. 3500P750A-QSD, HOT WATER HEATER, S/N 129793239 (New 1999), w/ 500-Gallon Water Storage Tank, (2) Weimann 10-HP Pumps

MOBILE EQUIPMENT & VEHICLES

HYSTER MDL. N40XMR3, 4,000-LB. NARROW AISLE FORKLIFT TRUCK, S/N C470N02733C (New 2005)

GENIE MDL. GS-2646, 750-LB. SCISSOR LIFT, S/N 5230

GENIE MDL. GS-1530, 500-LB. SCISSOR LIFT, S/N 5181

MULTITON MDL. SW-20-130, 2,000-LB. WALK BEHIND FORKLIFT TRUCK, S/N 0100727389

1999 HINO MDL. FUSO FM 617L, CAB OVER REFRIGERATED BOX TRUCK, VIN:

JHBF2JPSX2S10232

1997 MITSUBISHI MDL. FE649 BOX TRUCK, VIN: JW6BBE1H9VL002386



HINO FUSO CAB OVER REFRIGERATED BOXTRUCK



VIEW OF CONFERENCE ROOM

FLOOR & TABLE TOP SCALES

METTLER TOLEDO MDL. VIPER EX SM 30, FLOOR SCALE, S/N 2716508, 6.571-kg to 30-kg Explosion Proof

METTLER TOLEDO MDL. VIPER MB12, FLOOR SCALE, S/N 2808747, 325g-12-kg Explosion Proof

METTLER TOLEDO MDL. 2888P32022, FLOOR SCALE, S/N 5390161-5ME/1124999-1ME, 78.56-kg to 500-kg Puma Portable Scale

METTLER TOLEDO MDL. M8141/2158F, FLOOR SCALE, S/N 44449015-4SY/1079117-1YY, 36.29-kg to 1000-kg Pit Scale

METTLER TOLEDO MDL. 2888P32022, FLOOR SCALE, S/N 5390162-5ME/1125001-1MF, 78.56-kg to 500-kg Puma Portable Scale

METTLER TOLEDO MDL. ID5/KCC150S, FLOOR SCALE, S/N 2139707/2117206, 2224635/2224679, 2139708/2138555, 1.968-kg to 150-kg Floor Scale

METTLER TOLEDO MDL. ID5/2162, FLOOR SCALE, S/N 2138530/1071310-1YY, 1.968-kg to 150-kg Floor Scale

METTLER TOLEDO MDL. AG285 SCALE, S/N 1119350395, 0-300mg Tabletop

METTLER TOLEDO MDL. SB16001 SCALE, S/N 1126500266, 300g - 16.1-Kg Tabletop

OHAUS MDL. AR3130 SCALE, S/N 1225151098, 310g Capacity Tabletop

METTLER TOLEDO MDL. PB303S SCALE, S/N 112222817, 3g - 310g Tabletop

METTLER TOLEDO MDL. PB302 SCALE, S/N 1117490147, 3g - 310g Tabletop

METTLER TOLEDO MDL. PB303 SCALE, S/N 1117140140, 1117140138, 1117132507, 3g - 310g Tabletop

METTLER TOLEDO MDL. SB16001 SCALE, S/Ns 1117163123, 1117082281, 2115297505, 300g - 16.1-kg Tabletop

METTLER TOLEDO MDL. SB16001 SCALE, S/N 1117082280, 300g - G 800 1,000 1,25016.1-kg Tabletop

OFFICE FURNITURE

LOT OF MISCELLANEOUS OFFICE FURNITURE & EQUIPMENT THROUGHOUT OFFICE AREAS, CONSISTING OF:

Datum Mdl. 1800, 8-Section Rolling Bed Filing Cabinet, Fire King Mdl. Turtle, Approx. (40) Fire Proof File Cabinet, Toshiba E Studio 523 Printer, Hewlett Packard Designjet1050C Plus Wide Format Printer, Computers, Printers, Fax Machines, Servers, Server Room Equipment, Fax Machines, Scanners, Conference Room Furniture, Telephone System, Security System, Flammable File Cabinets, Office Partitions, Desks, Chairs, Break Room Furniture & Equipment, Lockers, etc

REAL ESTATE FOR LEASE

3701 Concorde Parkway, Chantilly, VA 20151

- 49,068 Sf Building with a Mix of Office, Lab, R&D & Lab Build Out
- (9) Loading Dock Doors
- (1) Drive-In Door, Truck Court
- 18' Clear Ceiling Heights



For leasing information contact David Scully and Chris Darling of Cassidy Turley at (703) 770.3400

ON-SITE & WEBCAST AUCTION

Thursday, October 16th, 2014,
Beginning at 10:00am EDT
3701 Concorde Parkway, Ste. 500
Chantilly, VA



CHANTILLY BIOPHARMA LLC

State-of-the-Art
Late Model
Pharmaceuticals
Manufacturing Facility



MULTIPACK SHRINK WRAP MACHINE



AGILENT GAS CHROMATOGRAPH



TRANE AIR COOLED PROCESS CHILLER

BIDITUP
BIDITUP AUCTIONS WORLDWIDE
AN INDUSTRIAL ASSETS COMPANY
11426 Ventura Boulevard
Studio City, California 91604
Phone: 818.508.7034
Fax: 818.508.3025
info@biditup.com

MACHINERY AUCTION, LOOK INSIDE!

**ATTENTION: PLANT MANAGER
OR EQUIPMENT BUYER**



VA License #???



SCAN QR CODE
TO SEE ALL INFORMATION
ABOUT THIS AUCTION!

CAN'T MAKE IT IN PERSON?

ONLINE BIDDING AVAILABLE AT:
www.biditup.com

FINANCING & LEASING
FOR ALL YOUR EQUIPMENT NEEDS

CHARCOLE CAPITAL
Direct Lender - Equipment Financing & Leasing

APPLY ONLINE AT WWW.CHARCOLECAPITAL.COM

ON-SITE & WEBCAST AUCTION



CHANTILLY BIOPHARMA LLC

Thursday, October 16th, 2014, Beginning at 10:00am EDT

LOCATION: 3701 Concorde Parkway, Suite 500, Chantilly, VA

PREVIEW: Wednesday, October 15th, 9:00am to 4:00pm or By Appointment

**STATE-OF-THE-ART LATE MODEL
PHARMACEUTICALS MANUFACTURING FACILITY**

LODGING

WESTFIELDS MARRIOTT - 703-818-0300
14750 Conference Center Drive, Chantilly, VA

HOLIDAY INN - 800-972-3159
4335 Chantilly Shopping Center, Chantilly, VA

DIRECTIONS

FROM DULLES INT'L AIRPORT TO SALE SITE: Continue to Dulles Access Rd. Head west on Saarinen Cir toward Copilot Way. Slight left to stay on Saarinen Cir. Take VA-28 S to US-50 W in Sully. Take the US-50 W exit from VA-28 S. Continue onto Dulles Access Rd. Take exit 9A toward Washington/Virginia 28/Virginia 267/U.S. 50/U.S. 7/Sterling/Centreville/Interstate 495. Keep left at the fork to continue toward VA-28 S. Keep right at the fork, follow signs for Virginia 28/Virginia 7/US 50/Sterling/Centreville. Keep right at the fork and merge onto VA-28 S. Exit onto US-50 W toward Winchester. Continue on US-50 W. Take Avion Pkwy to Concorde Pkwy. Merge onto US-50 W. Turn right onto Avion Pkwy. Turn right onto Concorde Pkwy.

ONSITE BIDDER INSTRUCTIONS: \$500 cash minimum registration deposit or 25% of approximately bid amount (whichever is greater) via wire transfer ACH, cashier's check or bank letter to - Blank Signed Company Check (To be returned once final payment is received). Please refer to www.biditup.com for complete registration information.

ONLINE BIDDER INSTRUCTIONS: All internet bidders must register for this auction at least 72-hours prior to the sale date, if you do not you will not be approved. All internet bidders must provide a wire transfer deposit of approximately 25% of your planned spending amount or \$2,500 minimum, whichever is greater in order to be approved to bid. Those who do not post the deposit will not be approved. Period. Please refer to www.biditup.com for online bidder terms.

UPCOMING AUCTION CALENDAR

MODERN VINYL & FIBERGLASS MANUFACTURING FACILITY

Thursday, September 18, 2014 - 9:00am CDT • LOCATION: Chicago, IL

ONSITE & WEBCAST

MANUFACTURER & SERVICER OF FARM & HARVESTING EQUIPMENT

Wednesday, September 24, 2014 - 10:00am PDT • LOCATION: Gridley, CA

ONSITE & WEBCAST

CAT HYDRAULIC EXCAVATORS, DOZERS, LOADERS & MORE!

Wednesday, September 24 - 2:00pm EDT • ASSETS LOCATION: Newark, NJ

ONLINE ONLY

FOR THE COMPLETE TERMS & CONDITIONS OF THE FEATURED AUCTION
Please visit our website www.BIDITUP.com

Thinking of having an auction or need an appraisal?
Call us at 818.508.7034