



INDUSTRIAL ASSETS

REAL ESTATE • FINANCE • MACHINERY • AUCTIONS

industrialassets.com

LIVE ON-SITE &
GLOBAL WEBCAST

AUCTION

AUCTION: Thursday, February 11th, 2016, Beginning at 10:00am (PST)

LOCATION: 3301 Medford Street, Los Angeles, CA 90063

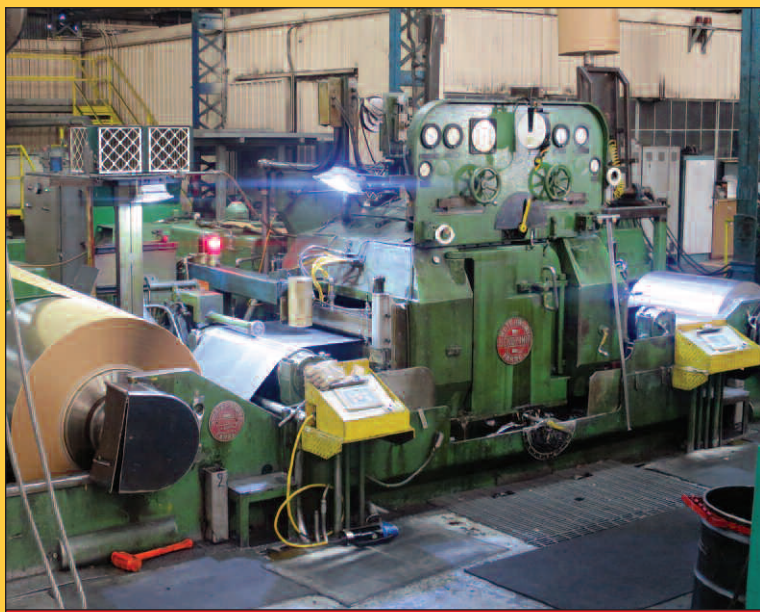
PREVIEW: Wednesday, February 10th, 8:00am to 4:00pm (PST)

Please Call (818) 508-7034 for More Information

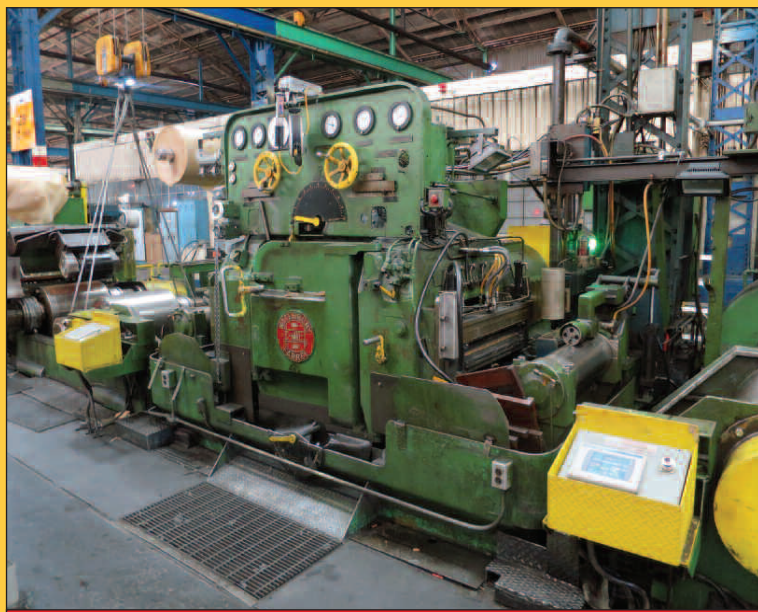
**PRECISION
SPECIALTY
METALS**

COMPLETE STAINLESS STEEL COLD ROLLING FACILITY

FEATURING: Waterbury-Farrel Sendzimir Rolling Mills, Waterbury-Farrel Temper Rolling Mills, Herr Voss Tension Leveling Line, J.T. Thorpe Annealing & Pickle Lines, Loopco & Paxson Slitting Lines and Much More...



37" ZR23-37 Waterbury-Farrel Sendzimir Rolling Mill



25" ZR23-25 Waterbury-Farrel Sendzimir Rolling Mill

Online Bidding Available, Visit www.biditup.com for Complete Registration Information

BIDITUP
BIDITUP AUCTIONS WORLDWIDE
AN INDUSTRIAL ASSETS COMPANY

818.508.7034
www.biditup.com

Technical
Advisor:

**NATIONAL
MACHINERY
EXCHANGE, INC.**

Complete
Photos &
Lot Listings at
biditup.com



37" Waterbury-Farrel 2-Hi Temper Rolling Mill



25" Waterbury-Farrel 2-Hi Temper Rolling Mill



39" Herr Voss Tension Leveling Line



39" Herr Voss Tension Leveling Line



39" Herr Voss Tension Leveling Line



AJ Thorpe Annealing & Pickling Line



AJ Thorpe Annealing & Pickling Line



48" x .135" x 33K Loopco Gen II Slitting Line

SENDZIMIR ROLLING MILLS

- **37" WATERBURY-FARREL ZR23-37 SENDZIMIR COLD ROLLING MILL**, .125" Max. Entry Gauge, .005"-.048" Min. Exit Gauge, 20"-26.5" Coil Width, 11,000# Coil Weight, 16"-24"/44" Entry Coil ID/OD, 24"/48" Exit Coil ID/OD (w/Paper Interleave), 450 FPM line speed, 500 HP Main Mill Motor, (2) 250 HP Motors on each reel, Reliance Drives updated 2005
- **25" WATERBURY-FARREL ZR23-25 SENDZIMIR COLD ROLLING MILL**, .100" Max. Entry Gauge, .005"-.060" Min. Exit Gauge, 25"-38" Coil Width, 14,000# Coil Weight, 24"/44" Entry Coil ID/OD, 24"/48" Exit Coil ID/OD (w/Paper Interleave), 500 FPM line speed, 300 HP Main Mill Motor, (2) 100 HP Motors on each reel, Reliance Drives updated 2005
- **HUNDREDS (500+) OF WORK ROLLS, FIRST INTERMEDIATE ROLLS AND ASSEMBLIES**

TEMPER ROLLING MILLS

- **37" WATERBURY-FARREL 2-HITEMPER MILL**, .005"-.100" Min/Max Gauge, 14"-37" Coil Width, 14,000# Coil Weight, 20"/45" Entry Coil ID/OD, 20"/48" Exit Coil ID/OD (w/Paper Interleave), 500 FPM line speed
- **25" WATERBURY FARREL 2-HITEMPER MILL**, .005"-.100" Min/Max Gauge, 20"-26.5" Coil Width, 11,000# Coil Weight, 20"/44" Entry Coil ID/OD, 20"/48" Exit Coil ID/OD (w/Paper Interleave), 500 FPM line speed
- **SPARE WORK ROLLS, CHOCKS AND BEARINGS FOR BOTH TEMPER ROLLING MILLS**

TENSION LEVELING LINE

- **39" HERR VOSS TENSION LEVELING LINE**, 24"-39" Width, .008"-.063" Thickness Range, 27,000# Entry/Exit Coil Weight, 20"/60" Entry ID/OD, 20"/60" Exit ID/OD, Line speed 300/600 FPM, Line Direction Left-Right Direction, Installed 1992

ANNEALING & PICKLE LINES

- **48" J.T. THORPE ANNEALING LINE - LINE #1**, .006"-.075" Min/Max, 20"-48" Coil Width, 25,000# Max Coil Weight, 20"/50" Coil ID/OD Entry, 20"/50" Coil ID/OD Exit, 50 FPM, Left to Right Direction, New furnace (yr 2002), 2-Zones - 10 burners, (3) treatment tanks, Includes (2) uncoilers w/coil cars, (1) recoiler with coil car
- **48" J.T. THORPE ANNEALING LINE - LINE #2**, .006"-.075" Min/Max, 20"-48" Coil Width, 30,000# Max Coil Weight, 20"/50" Coil ID/OD Entry, 20"/50" Coil ID/OD Exit, 50 FPM, Left to Right Direction, New furnace in 2002, 2-Zones - 10 burners, (4) treatment tanks, Includes (2) uncoilers w/coil cars, (2) recoilers with coil cars

SLITTING LINES

- **48" LOOPCO GEN II LOOP SLITTING LINE**, .010" - .135" Strip Thickness, 16"-50" Entry Strip Width, 48" Exit Strip Width, 33,000# Entry/Exit Capacity, 16"-20" ID Entry/Exit, 36"-60" OD Entry/Exit, 320/500 FPM, Line Direction Right to Left, (2) Slitting heads, 6" Diameter slitting heads, Includes Tooling, Year 1985
- **36" PAXSON LOOP SLITTING LINE**, .008"-.030" Strip Thickness, 16"-36" Entry Strip Width, 14,000# Entry/Exit Capacity, 20" ID Entry/Exit, 50"/60" OD Entry/Exit, 200 FPM, Line Direction Left to Right, Two Slitting Heads, 6" Dia. Slitting Head, Includes Tooling
- **LOOPCO PACKAGING LINE**, Gravity Conveyor, 3500# Capacity, Signode Banding Head, Stacker, 8-position Lazy-Susan Table, Nitech Stretch Wrapper, Exit Conveyor, Includes Tooling
- **COILTECH CORE CUTTER**

TO SCHEDULE AN AUCTION OR APPRAISAL CALL 818.508.7034



15-Ton Arrowhoist Double Girder Tob Running Bridge Crane



15-Ton Crane Netics Double Girder Tob Running Bridge Crane



15-Ton Checo Double Girder Tob Running Bridge Crane



Naxos-Union Cylindrical Roll Grinder



AJ Thorpe Annealing & Pickling Line



39" Herr Voss Tension Leveling Line



Waste Water Treatment Facility



Cincinnati Cylindrical Grinder



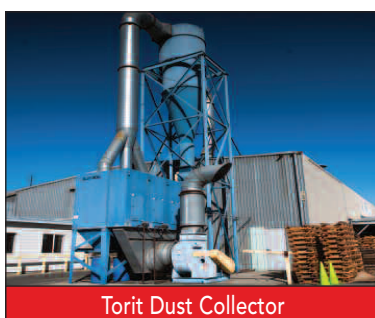
Niagara Power Shear



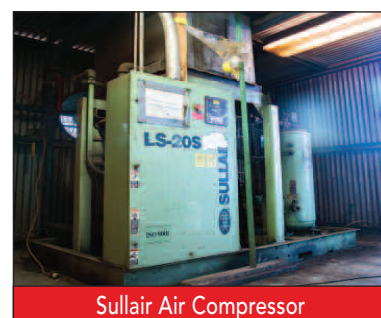
AJ Thorpe Anneal & Pickle Line



Waste Water Treatment Facility



Torit Dust Collector



Sullair Air Compressor

BRIDGE CRANES

- (3) 15-TON X 35' ARROWHOIST DOUBLE GIRDER TOP RUNNING BRIDGE CRANES, S/N B-4199, Radio Controlled
- 15-TON X 55' CHECO DOUBLE GIRDER TOP RUNNING BRIDGE CRANE, S/N A-6133, Radio Controlled
- (2) 15-TON X 35' CHECO DOUBLE GIRDER TOP RUNNING BRIDGE CRANE, S/N A-6492, Radio Controlled
- 15-TON X 35' CRANE NETICS DOUBLE GIRDER TOP RUNNING BRIDGE CRANE, S/N 0012611, Pendant Control
- 10-TON X 45' CHECO DOUBLE GIRDER TOP RUNNING BRIDGE CRANE, S/N A-6231, Radio Controlled
- 10-TON X 35' CHECO SINGLE GIRDER TOP RUNNING BRIDGE CRANE, S/N A-6330, Radio Controlled
- 7-1/2-TON X 35' CHECO DOUBLE GIRDER TOP RUNNING BRIDGE CRANE, S/N A-6914, Radio Controlled
- (2) 5-TON X 35' CRANEHOIST DOUBLE GIRDER TOP UNDER HUNG BRIDGE CRANES, S/N B-2071, Radio Controlled
- 5-TON X 35' DUCT-O-WIRE SINGLE GIRDER UNDER HUNG BRIDGE CRANE, Pendant Control
- 5-TON X 15' CHECO SINGLE GIRDER UNDER HUNG BRIDGE CRANE, S/N A-6913, Pendant Controlled
- 3-TON X 30' KONECRANES SINGLE GIRDER UNDER HUNG BRIDGE CRANE, S/N 5890011 Pendant Controlled

ROLL GRINDERS

- 42" X 180" (15') NAXOS-UNION W750/4500 CYLINDRICAL ROLL GRINDER, S/N 36439 (1970), Variable Speed Motorized Workhead, Tailstock, Variable Speed 36" x 3-1/2" Grinding Wheel, (2) Work Rests, Newall Digital Readout, 50 HP Motor
- 24" X 95" NAXOS-UNION WT63-2500 CYLINDRICAL GRINDER, S/N 36243, Motorized Workhead, Tailstock, 26" x 2" Grinding Wheel, (2) Work Rests, Digital Readout, Paper Filter Coolant System
- 14" X 36" CINCINNATI UNIVERSAL CYLINDRICAL GRINDER, S/N 3U4D1S-5, Motorized Workhead, Tailstock, (2) Work Rest, 12" x 1-1/2" Grinding Wheel, Digital Readout, Paper Filter Coolant System, (Updated Baldor & Toshiba Drives)
- 11" X 70" CINCINNATI CYLINDRICAL GRINDER, Variable Speed Motorized Workhead, Tailstock, Variable Speed 14" x 1 1/2" Grinding Wheel, Filmatic Grinding Spindle, Digital Readout, (2) Work Rests, (Updated Baldor & Toshiba Drives)

SHEARS

- 1/4' X 8' PEARSON HYDRAULIC POWER SHEAR, S/N 5094-5, Front Operated Power Back Gauge w/Indicator, Quick Adjustment Rake Angle, Hydraulic Hold Downs
- 3/16" X 10' NIAGARA 1L-10 POWER SHEAR, S/N 40303, Rear Operated Manual Back Gauge, Square Arm, 20" Throat Depth
- 10 GA. X 10' NIAGARA 1R10-10 GA POWER SHEAR, S/N 60624, Rear Operated Manual Back Gauge, One Shot Lube System

DUST COLLECTOR

- 18,000 CFM TORIT MODEL SBD36-3 DUST COLLECTOR, S/N 60053173 (2002), 2,624 RPM, Pneumatic Auto Shaker, Cartridge Type, 75 HP Motor

SAWS

- 12" X 16' PEHAKA HC-260 HORIZONTAL BANDSAW, S/N 37062-083147 (1984), Variable Speed Drive, 1" Blade, 2 HP Motor

AIR COMPRESSORS

- 150 HP SULLAIR MODEL LS20S-150L ROTARY SCREW AIR COMPRESSOR, S/N 003-107618, 110 PSI, Run Hours 21,308, Load Hours 19,627
- 100 HP SULLAIR MODEL 25-100L ROTARY SCREW AIR COMPRESSOR, S/N 37831 DGH, 110 PSI

PLANT SUPPORT

- C-HOOKS, COIL UPENDER, STORES, MACHINE SHOP, SPARE PARTS, ROLLING STOCK

WASTE TREATMENT SYSTEMS

- ECO-TEC AP-D15GN ACID PURIFICATION SYSTEM, S/N2970 & 2981 (1997)
- ANN ARBOR TECHNOLOGIES WASTE WATER TREATMENT SYSTEM, AAT 2000 Digital Controls and Controlled by Central PLC, 35 GPM Nominal Flow Capacity w/(2) JWI Model 1000G25-31-20 Slys Filter Presses, S/N F05950, 40 & 38 Filters, 100 PSI Max Filtration Pressure, 3,200 PSI Hydraulic Closing

Register at www.BIDITUP.com and receive auction updates via email

Live On-Site & Webcast **AUCTION**

Thurs., Feb. 11th at 10:00am (PST)
3301 Medford Street, Los Angeles, CA

PRECISION SPECIALTY METALS

Waterbury-Farrel Sendzimir Rolling Mills,
Waterbury-Farrel Temper Rolling Mills,
Herr Voss Tension Leveling Line, J.T.
Thorpe Annealing & Pickle Lines, Loopco
& Paxson Slitting Lines and Much More...



37" Waterbury-Farrel Rolling Mill



39" Tension Leveling Line



Paxson Slitting Line



Annealing & Pickling Line



11426 Ventura Boulevard
Studio City, California 91604
Phone: 818.508.7034
Fax: 818.508.3025
info@biditup.com

Steven Mattes, Auctioneer
CA Bond #0491804



SCAN QR CODE
TO SEE ALL INFORMATION
ABOUT THIS AUCTION!

MACHINERY AUCTION, LOOK INSIDE!

**ATTENTION: PLANT MANAGER
OR EQUIPMENT BUYER**



ON-SITE & WEBCAST AUCTION

PRECISION SPECIALTY METALS

AUCTION: Thursday, February 11th, 2016 at 10:00am (EST)
LOCATION: 3301 Medford Street, Los Angeles, CA 90063
COMPLETE STAINLESS STEEL COLD ROLLING FACILITY
FEATURING: Waterbury-Farrel Sendzimir Rolling Mills, Waterbury-Farrel Temper Rolling Mills, Herr Voss
Tension Leveling Line, J.T. Thorpe Annealing & Pickle Lines, Loopco & Paxson Slitting Lines and Much More...



LODGING

BEST WESTERN – (626) 289-5090
420 N Atlantic Blvd, Monterey Park, CA 91754
COMFORT INN – (626) 308-9600
588 S Atlantic Blvd, Monterey Park, CA 91754

DIRECTIONS

FROM: LOS ANGELES INT'L AIRPORT (LAX): Merge onto CA-1 S/S Sepulveda Blvd toward I-105. Merge onto I-105 E/Glenn
Anderson Fwy E toward Norwalk. Merge onto I-110 N/Harbor Fwy N toward Los Angeles. Merge onto I-10 E toward San
Bernardino. Merge onto I-10 E toward San Bernardino. Take the Soto St exit. Turn left onto N Soto St. Keep right at the fork to
continue on N Soto St. Take the 1st right onto Medford St. 3301 MEDFORD ST is on the left.

ONSITE BIDDER INSTRUCTIONS: \$500 cash minimum registration deposit or 25%
of approximately bid amount (whichever is greater) via wire transfer ACH, cashier's check
or bank letter to – Blank Signed Company Check (To be returned once final payment is
received). Please refer to www.biditup.com for complete registration information.

ONLINE BIDDER INSTRUCTIONS: All internet bidders must register for this auction at least 72-hours prior to the sale
date, if you do not you will not be approved. All internet bidders must provide a wire transfer deposit of approximately
25% of your planned spending amount or \$2,500 minimum, whichever is greater in order to be approved to bid. Those
who do not post the deposit will not be approved. Period. Please refer to www.biditup.com for online bidder terms.

UPCOMING AUCTION CALENDAR

FORTUNE MANUFACTURING, INC. – MACHINING CENTERS, PROFILER, GRINDER, MILLS, CMM'S & MORE
Wednesday, January 20, 2016 at 10:00am (PST) • 13747 Amarillo Ave. & 13849 Magnolia Blvd., Chino CA

ONSITE & WEBCAST

SHEFFIELD MANUFACTURING, INC. – MACHINING CENTERS, PROFILER, GRINDER, MILLS, CMM'S & MORE
Thursday, January 21, 2016 at 10:00am (PST) • 1855 Del Amo Boulevard, Torrance, CA

ONSITE & WEBCAST

SURPLUS ASSETS TO THE ONGOING OPERATIONS OF CLOROX MANUFACTURING COMPANY
Bidding Starts: February 17, 12:00pm (PST) • Bidding Ends: February 24, 12:00pm (PST) • Vernon, CA

GLOBAL ONLINE

FOR THE COMPLETE TERMS & CONDITIONS OF THE FEATURED AUCTION
Please visit our website www.BIDITUP.com

Thinking of having an auction or need an appraisal?
Call us at 818.508.7034