

Kamman's Farms, Inc.

by Miedema Auctioneering

Wed, Jan 27, 2016 10:00 AM Eastern

By order of receiver assets of Kamman's Farms, Inc. will be liquidated. Auction includes Tractors, Busses, Trucks, Trailers, Implements, Attachments, Sprayers, Irrigation & Processing Equip and more!

Items are located at 4683 S. State Road 135, Vallonia, IN 47281. Removal times are Wed., Jan. 27 until 5 PM, & Thurs., Jan. 28 & Fri., Jan. 29 from 8:00 AM - 4:00 PM. Payment may be made on site or call Deb Boverhof at 616-261-4979.

We will be adding more lots and details to the catalog. Please continue to check back to be sure you have the most complete information If you have any questions on the equipment please call Chuck Ranney at 616-560-0839. International bidders will need to pay a deposit of 1000.00 charged to their credit card to be approved to bid on our auction. Call Donna at 616-389-6440 or Deb at 616-261-4979. Your deposit will be refunded if you are not the high bidder.



METAL STAND AND (3) BUSHEL BASKETS WITH ASSORTED DECORATIONS

Lot #1 (Sale Order 1 of 301)

METAL STAND AND (3) BUSHEL BASKETS WITH ASSORTED DECORATIONS



(2) WOODEN TABLES WITH ASSORTED CONTENTS OF COOKBOOKS AND MORE

Lot #2 (Sale Order 2 of 301)

(2) WOODEN TABLES WITH ASSORTED CONTENTS OF COOKBOOKS AND MORE



VINTAGE TYPE STOVE WITH ASSORTED DECORATIONS AND COOKWARE

Lot #3 (Sale Order 3 of 301)

VINTAGE TYPE STOVE WITH ASSORTED DECORATIONS AND COOKWARE



WOODEN STAND WITH ASSORTED FLAGS

Lot #4 (Sale Order 4 of 301)

WOODEN STAND WITH ASSORTED FLAGS



TABLE AND WOODEN STAND WITH ASSORTED DECORATIONS AND BOOKS

Lot #5 (Sale Order 5 of 301)

TABLE AND WOODEN STAND WITH ASSORTED DECORATIONS AND BOOKS



WOODEN TABLE WITH CONTENTS AND CONTENTS OF SHELF - WATERMELON DECORATIONS, DISHES, AND COCA-COLA TIN

Lot #6 (Sale Order 6 of 301)

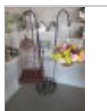
WOODEN TABLE WITH CONTENTS AND CONTENTS OF SHELF - WATERMELON DECORATIONS, DISHES, AND COCA-COLA TINS



CONTENTS OF (4) SHELVES - PICTURES, DECORATIONS, BOWLS, AND MORE

Lot #7 (Sale Order 7 of 301)

CONTENTS OF (4) SHELVES - PICTURES, DECORATIONS, BOWLS, AND MORE



METAL STAND WITH ASSORTED PLANT/BIRDHOUSE HANGERS

Lot #8 (Sale Order 8 of 301)

METAL STAND WITH ASSORTED PLANT/BIRDHOUSE HANGERS



(11) SHELVES OF ASSORTED DECORATIONS, FIGURINES, AND MORE

Lot #9 (Sale Order 9 of 301)

(11) SHELVES OF ASSORTED DECORATIONS, FIGURINES, AND MORE



ICE FREEZER

Lot #10 (Sale Order 10 of 301)

ICE FREEZER



(2) METAL STANDS AND TABLE WITH ASSORTED DECORATIONS, FIGURINES, AND MORE

Lot #11 (Sale Order 11 of 301)

(2) METAL STANDS AND TABLE WITH ASSORTED DECORATIONS, FIGURINES, AND MORE



(2) WOODEN HUTCHES WITH ASSORTED PICTURES, DECORATIONS, AND MORE

Lot #12 (Sale Order 12 of 301)

(2) WOODEN HUTCHES WITH ASSORTED PICTURES, DECORATIONS, AND MORE



(2) DISPLAY STANDS WITH CONTENTS - DECORATIONS, SPICES, AND MORE

Lot #13 (Sale Order 13 of 301)

(2) DISPLAY STANDS WITH CONTENTS - DECORATIONS, SPICES, AND MORE



(2) WOODEN BARRELS

Lot #13A (Sale Order 13 of 301)

(2) WOODEN BARRELS



ASSORTED BOOKS, MOVIES, LEGOS, AND MORE

Lot #13B (Sale Order 13 of 301)

ASSORTED BOOKS, MOVIES, LEGOS, AND MORE



WOODEN TABLE, WOODEN STAND WITH ASSORTED DECORATIONS, METAL AND PLASTIC TUBS

Lot #14 (Sale Order 14 of 301)

WOODEN TABLE, WOODEN STAND WITH ASSORTED DECORATIONS, METAL AND PLASTIC TUBS



(2) CASH REGISTERS, SCALE, ASSORTED OFFICE SUPPLIES

Lot #15 (Sale Order 15 of 301)

(2) CASH REGISTERS, SCALE, ASSORTED OFFICE SUPPLIES



DISPLAY SHELF WITH CONTENTS - DECORATIONS, WICKER BASKETS, AND MORE

Lot #16 (Sale Order 16 of 301)

DISPLAY SHELF WITH CONTENTS - DECORATIONS, WICKER BASKETS, AND MORE



(4) STANDS WITH ASSORTED WIND CHIMES, DECORATIONS AND BOOKS

Lot #17 (Sale Order 17 of 301)

(4) STANDS WITH ASSORTED WIND CHIMES, DECORATIONS AND BOOKS



(2) WOODEN TABLES WITH ASSORTED DECORATIONS

Lot #18 (Sale Order 18 of 301)

(2) WOODEN TABLES WITH ASSORTED DECORATIONS



(2) DISPLAY TABLES WITH CONTENTS - DECORATIONS AND MORE

Lot #19 (Sale Order 19 of 301)

(2) DISPLAY TABLES WITH CONTENTS - DECORATIONS AND MORE



ASSORTED DECORATIONS AND SIGNS

Lot #20 (Sale Order 20 of 301)

ASSORTED DECORATIONS AND SIGNS



BUNN 2-BURNER COFFEE POT AND ASSORTED SUPPLIES

Lot #21 (Sale Order 21 of 301)

BUNN 2-BURNER COFFEE POT AND ASSORTED SUPPLIES



NEON OPEN SIGN AND NEON AMERICAN FLAG SIGN

Lot #22 (Sale Order 22 of 301)

NEON OPEN SIGN AND NEON AMERICAN FLAG SIGN



CONTENTS OF (5) SHELVES - ASSORTED DECORATIONS, (3) PICTURES

Lot #23 (Sale Order 23 of 301)

CONTENTS OF (5) SHELVES - ASSORTED DECORATIONS, (3) PICTURES



PATTON PEDESTAL FAN

Lot #24 (Sale Order 24 of 301)

PATTON PEDESTAL FAN



WOODEN TABLE WITH ASSORTED SIGNS/DECORATIONS

Lot #25 (Sale Order 25 of 301)

WOODEN TABLE WITH ASSORTED SIGNS/DECORATIONS



(5) SHELVES, WOODEN BENCH WITH ASSORTED DECORATIONS AND JOHN DEERE TINS

Lot #26 (Sale Order 26 of 301)

(5) SHELVES, WOODEN BENCH WITH ASSORTED DECORATIONS AND JOHN DEERE TINS



(5) SHELVES WITH ASSORTED DECORATIONS, WOODEN TABLE WITH ASSORTED DECORATIONS

Lot #27 (Sale Order 27 of 301)

(5) SHELVES WITH ASSORTED DECORATIONS, WOODEN TABLE WITH ASSORTED DECORATIONS



(2) PLASTIC SHELVES WITH CONTENTS, WOODEN ROLLING CABINET WITH CASH REGISTER, AND MORE

Lot #28 (Sale Order 28 of 301)

(2) PLASTIC SHELVES WITH CONTENTS, WOODEN ROLLING CABINET WITH CASH REGISTER, AND MORE



SCOTTSMAN CM3 AQUA ARMOR ICE MAKER

Lot #29 (Sale Order 29 of 301)

SCOTTSMAN CM3 AQUA ARMOR ICE MAKER



ASSORTED DECORATIONS - TABLES, BOXES, BASKETS, AND MORE

Lot #30 (Sale Order 30 of 301)

ASSORTED DECORATIONS - TABLES, BOXES, BASKETS, AND MORE



BROTHER MFC-9970CDW COPIER/SCANNER/FAX MACHINE

Lot #31 (Sale Order 31 of 301)

BROTHER MFC-9970CDW COPIER/SCANNER/FAX MACHINE



LEXMARK MS818N PRINTER

Lot #32 (Sale Order 32 of 301)

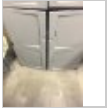
LEXMARK MS818N PRINTER



ZEBRA ZM400 LABEL PRINTER

Lot #33 (Sale Order 33 of 301)

ZEBRA ZM400 LABEL PRINTER



(4) TABLES, (4) ROLLING CHAIRS, (3) PLASTIC CABINETS

Lot #34 (Sale Order 34 of 301)

(4) TABLES, (4) ROLLING CHAIRS, (3) PLASTIC CABINETS



LEXMARK GS510DE PRINTER, LEXMARK T652N PRINTER

Lot #35 (Sale Order 35 of 301)

LEXMARK GS510DE PRINTER, LEXMARK T652N PRINTER



DATAMAX ONEILL LABEL PRINTER WITH CPU SCANNER

Lot #37 (Sale Order 37 of 301)

DATAMAX ONEILL LABEL PRINTER WITH CPU SCANNER



(3) ROLLING CHAIRS

Lot #38 (Sale Order 38 of 301)

(3) ROLLING CHAIRS



(8) LIFETIME PLASTIC TABLES

Lot #39 (Sale Order 39 of 301)

(8) LIFETIME PLASTIC TABLES



(3) WOODEN TABLES WITH WOODEN BAR STOOLS

Lot #40 (Sale Order 40 of 301)

(3) WOODEN TABLES WITH WOODEN BAR STOOLS



(2) 2-WHEEL DOLLIES, ASSORTED PLASTIC BOXES, PLASTIC SHELF

Lot #41 (Sale Order 41 of 301)

(2) 2-WHEEL DOLLIES, ASSORTED PLASTIC BOXES, PLASTIC SHELF



ASSORTED WOODEN BASKETS

Lot #42 (Sale Order 42 of 301)

ASSORTED WOODEN BASKETS



ASSORTED PLASTIC CRATES, TRASH CANS, FUEL CANS

Lot #43 (Sale Order 43 of 301)

ASSORTED PLASTIC CRATES, TRASH CANS, FUEL CANS



NUCOOL MINI REFRIGERATOR

Lot #44 (Sale Order 44 of 301)

NUCOOL MINI REFRIGERATOR



KUBOTA LA-1 DIGITAL SCALE

Lot #44A (Sale Order 44 of 301)

KUBOTA LA-1 DIGITAL SCALE



5' ELECTRIC ROUND TABLE

Lot #44B (Sale Order 44 of 301)

5' ELECTRIC ROUND TABLE



PATTON PEDESTAL FAN

Lot #45 (Sale Order 45 of 301)

PATTON PEDESTAL FAN



(2) PLASTIC TABLES WITH CONTENTS

Lot #46 (Sale Order 46 of 301)

(2) PLASTIC TABLES WITH CONTENTS



GAS POWERED TRASH PUMP, 2", BRIGGS & STRATTON GAS ENGINE, RUNS

Lot #46A (Sale Order 46 of 301)

GAS POWERED TRASH PUMP, 2", BRIGGS & STRATTON GAS ENGINE, RUNS



(2) TRASH PUMPS, 2", BRIGGS & STRATTON GAS ENGINES, (1) SIEZED UP, (1) PULLS OVER BUT UNABLE TO STA

Lot #46B (Sale Order 46 of 301)

(2) TRASH PUMPS, 2", BRIGGS & STRATTON GAS ENGINES, (1) SIEZED UP, (1) PULLS OVER BUT UNABLE TO START



TRANSCCELL TI-500E DIGITAL PLATFORM SCALE WITH FORKLIFT RAMP, TABLE IS 4'x4'

Lot #47 (Sale Order 47 of 301)

TRANSCCELL TI-500E DIGITAL PLATFORM SCALE WITH FORKLIFT RAMP, TABLE IS 4'x4'



(6) ASSORTED WOODEN DISPLAY TABLES, 4' LONG x 40" WIDE x 38" HIGH, WITH WOODEN DISPLAY TABLE

Lot #48 (Sale Order 48 of 301)

(6) ASSORTED WOODEN DISPLAY TABLES, 4' LONG x 40" WIDE x 38" HIGH, WITH WOODEN DISPLAY TABLE



PLASTIC OUTDOOR CABINET, PLASTIC TABLE WITH ASSORTED DECORATIONS

Lot #49 (Sale Order 49 of 301)

PLASTIC OUTDOOR CABINET, PLASTIC TABLE WITH ASSORTED DECORATIONS



(3) SKIDS OF ASSORTED PLASTIC POTS, ASSORTED PLASTIC TUBS

Lot #50 (Sale Order 50 of 301)

(3) SKIDS OF ASSORTED PLASTIC POTS, ASSORTED PLASTIC TUBS



HOOP STYLE GREENHOUSE, INCLUDES METAL HOOPS, STANDS, MODINE HIGH EFFICIENCY GAS FURNACE, FANS, BUYER

Lot #51 (Sale Order 51 of 301)

HOOP STYLE GREENHOUSE, INCLUDES METAL HOOPS, STANDS, MODINE HIGH EFFICIENCY GAS FURNACE, FANS, BUYER IS RESPONSIBLE FOR REMOVAL



HOOP STYLE GREENHOUSE, INCLUDES METAL HOOPS, STANDS, MODINE HIGH EFFICIENCY GAS FURNACE, FANS, BUYER

Lot #52 (Sale Order 52 of 301)

HOOP STYLE GREENHOUSE, INCLUDES METAL HOOPS, STANDS, MODINE HIGH EFFICIENCY GAS FURNACE, FANS, BUYER IS RESPONSIBLE FOR REMOVAL



ASSORTED PLANTS AND STANDS

Lot #53 (Sale Order 53 of 301)

ASSORTED PLANTS AND STANDS



ASSORTED WOODEN STANDS AND PLASTIC DISPLAY BENCHES

Lot #54 (Sale Order 54 of 301)

ASSORTED WOODEN STANDS AND PLASTIC DISPLAY BENCHES



CEMENT BENCHES, WOODEN STANDS, WOODEN BOXES, PLASTIC DISPLAY STAND

Lot #55 (Sale Order 55 of 301)

CEMENT BENCHES, WOODEN STANDS, WOODEN BOXES, PLASTIC DISPLAY STAND



(5) ASSORTED WOODEN DISPLAY STANDS

Lot #56 (Sale Order 56 of 301)

(5) ASSORTED WOODEN DISPLAY STANDS



LETTER BOARD SIGN

Lot #57 (Sale Order 57 of 301)

LETTER BOARD SIGN



SKID OF PRO-MIX BX GENERAL PURPOSE GROWING MEDIUM

Lot #58 (Sale Order 58 of 301)

SKID OF PRO-MIX BX GENERAL PURPOSE GROWING MEDIUM



PLASTIC SHELF, PLASTIC TABLE WITH CONTENTS, PLASTIC BINS

Lot #59 (Sale Order 59 of 301)

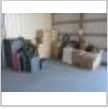
PLASTIC SHELF, PLASTIC TABLE WITH CONTENTS, PLASTIC BINS



8'x8' COOLER, BUYER IS RESPONSIBLE FOR REMOVAL

Lot #60 (Sale Order 60 of 301)

8'x8' COOLER, BUYER IS RESPONSIBLE FOR REMOVAL



ASSORTED GREENHOUSE SUPPLIES - POTS AND FLATS

Lot #61 (Sale Order 61 of 301)

ASSORTED GREENHOUSE SUPPLIES - POTS AND FLATS



APPROX. (16) ASSORTED STEEL WHEELS

Lot #62 (Sale Order 62 of 301)

APPROX. (16) ASSORTED STEEL WHEELS



SMALL PLANER, HAND SAWS, WOODEN DOLLY, AND MORE

Lot #63 (Sale Order 63 of 301)

SMALL PLANER, HAND SAWS, WOODEN DOLLY, AND MORE



(2) ELECTRIC VENTILATION FANS, 3'

Lot #64 (Sale Order 64 of 301)

(2) ELECTRIC VENTILATION FANS, 3'



(9) ASSORTED POST POUNDERS

Lot #65 (Sale Order 65 of 301)

(9) ASSORTED POST POUNDERS



MOTOVOX LITTLE SCOOTER, RUNNING CONDITION UNKNOWN, (2) BICYCLES - (1) WITH TRAINING WHEELS

Lot #66 (Sale Order 66 of 301)

MOTOVOX LITTLE SCOOTER, RUNNING CONDITION UNKNOWN, (2) BICYCLES - (1) WITH TRAINING WHEELS



BOX STAPLER

Lot #67 (Sale Order 67 of 301)

BOX STAPLER



DEWALT GAS POWERED PRESSURE WASHER

Lot #68 (Sale Order 68 of 301)

DEWALT GAS POWERED PRESSURE WASHER



DEWALT GAS POWERED PRESSURE WASHER

Lot #69 (Sale Order 69 of 301)

DEWALT GAS POWERED PRESSURE WASHER



BRUTE GAS POWERED POWER WASHER

Lot #70 (Sale Order 70 of 301)

BRUTE GAS POWERED POWER WASHER



(2) METAL DOORS, APPEAR NEW, IN BOX

Lot #71 (Sale Order 71 of 301)

(2) METAL DOORS, APPEAR NEW, IN BOX



ASSORTED FLAT HOLDERS

Lot #72 (Sale Order 72 of 301)

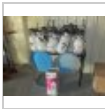
ASSORTED FLAT HOLDERS



MET CART, NEW IN BOX

Lot #73 (Sale Order 73 of 301)

MET CART, NEW IN BOX



ASSORTED HAND SPRAYERS, METAL STANDS, METAL CHAIRS

Lot #74 (Sale Order 74 of 301)

ASSORTED HAND SPRAYERS, METAL STANDS, METAL CHAIRS



ASSORTED WOODEN DISPLAY RACKS, WOODEN CHAIR, MAILBOX

Lot #75 (Sale Order 75 of 301)

ASSORTED WOODEN DISPLAY RACKS, WOODEN CHAIR, MAILBOX



LG TROMM FRONT LOAD WASHER, RED IN COLOR, WORKING CONDITION UNKNOWN

Lot #76 (Sale Order 76 of 301)

LG TROMM FRONT LOAD WASHER, RED IN COLOR, WORKING CONDITION UNKNOWN



APPROX. (100) ASSORTED WOODEN BASKETS

Lot #77 (Sale Order 77 of 301)

APPROX. (100) ASSORTED WOODEN BASKETS



APPROX. (100) ASSORTED WOODEN BASKETS

Lot #78 (Sale Order 78 of 301)

APPROX. (100) ASSORTED WOODEN BASKETS



APPROX. (100) ASSORTED WOODEN BASKETS

Lot #79 (Sale Order 79 of 301)

APPROX. (100) ASSORTED WOODEN BASKETS



APPROX. (100) ASSORTED WOODEN BASKETS

Lot #80 (Sale Order 80 of 301)

APPROX. (100) ASSORTED WOODEN BASKETS



APPROX. (100) ASSORTED WOODEN BASKETS

Lot #81 (Sale Order 81 of 301)

APPROX. (100) ASSORTED WOODEN BASKETS



ASSORTED WOODEN BASKETS, ASSORTED SIZES

Lot #82 (Sale Order 82 of 301)

ASSORTED WOODEN BASKETS, ASSORTED SIZES



ASSORTED PLANT HOLDERS, ASSORTED SUPPLIES

Lot #83 (Sale Order 83 of 301)

ASSORTED PLANT HOLDERS, ASSORTED SUPPLIES



ASSORTED WICKER BASKETS

Lot #84 (Sale Order 84 of 301)

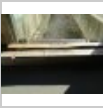
ASSORTED WICKER BASKETS



ASSORTED POTS AND PLANTERS

Lot #85 (Sale Order 85 of 301)

ASSORTED POTS AND PLANTERS



TUFFLITE GREENHOUSE PLASTIC WRAP

Lot #86 (Sale Order 86 of 301)

TUFFLITE GREENHOUSE PLASTIC WRAP



SKID OF ASSORTED SPHAGNUM MOSS PLANTING MATERIAL

Lot #87 (Sale Order 87 of 301)

SKID OF ASSORTED SPHAGNUM MOSS PLANTING MATERIAL



SKID OF ASSORTED HAND TOOLS - BROOMS, SHOVELS, RAKES, AND ASSORTED LUMBER

Lot #88 (Sale Order 88 of 301)

SKID OF ASSORTED HAND TOOLS - BROOMS, SHOVELS, RAKES, AND ASSORTED LUMBER



ASSORTED PLANTING FLATS

Lot #89 (Sale Order 89 of 301)

ASSORTED PLANTING FLATS



ASSORTED STRING AND DECORATIONS

Lot #90 (Sale Order 90 of 301)

ASSORTED STRING AND DECORATIONS



(2) SKIDS OF ASSORTED PLANTING POTS

Lot #91 (Sale Order 91 of 301)

(2) SKIDS OF ASSORTED PLANTING POTS



APPROX. (9) SKIDS OF ASSORTED WATERMELON BOXES

Lot #92 (Sale Order 92 of 301)

APPROX. (9) SKIDS OF ASSORTED WATERMELON BOXES



INGERSOLL RAND MODEL TS5 VERTICAL AIR COMPRESSOR

Lot #93 (Sale Order 93 of 301)

INGERSOLL RAND MODEL TS5 VERTICAL AIR COMPRESSOR



INGERSOLL RAND MODEL TS5 VERTICAL AIR COMPRESSOR

Lot #94 (Sale Order 94 of 301)

INGERSOLL RAND MODEL TS5 VERTICAL AIR COMPRESSOR



DEMA MIXER WITH DOSATRON FILTER

Lot #94A (Sale Order 94 of 301)

DEMA MIXER WITH DOSATRON FILTER



CS-7100 MELON CLEANER, 55 GALLON DRUM, OPEN BUT NEARLY FULL

Lot #94B (Sale Order 94 of 301)

CS-7100 MELON CLEANER, 55 GALLON DRUM, OPEN BUT NEARLY FULL



CS-223 GENERAL PURPOSE CLEANER, OPENED 55 GALLON DRUM, NEARLY FULL

Lot #94C (Sale Order 94 of 301)

CS-223 GENERAL PURPOSE CLEANER, OPENED 55 GALLON DRUM, NEARLY FULL



SELECTOCIDE CHLORINE DIOXIDE, 65 GALLON DRUM, NEARLY FULL, ALSO EMPTY DRUM

Lot #94D (Sale Order 94 of 301)

SELECTOCIDE CHLORINE DIOXIDE, 65 GALLON DRUM, NEARLY FULL, ALSO EMPTY DRUM



CF-7100 MELON CLEANER, UNOPENED 55 GALLON DRUM

Lot #94E (Sale Order 94 of 301)

CF-7100 MELON CLEANER, UNOPENED 55 GALLON DRUM



CF-7100 MELON CLEANER, UNOPENED 55 GALLON DRUM

Lot #94F (Sale Order 94 of 301)

CF-7100 MELON CLEANER, UNOPENED 55 GALLON DRUM



(2) PLASTIC STORAGE CABINETS, PLASTIC SHELF

Lot #94G (Sale Order 94 of 301)

(2) PLASTIC STORAGE CABINETS, PLASTIC SHELF



10x10 CHAIN LINK KENNEL

Lot #94H (Sale Order 94 of 301)

10x10 CHAIN LINK KENNEL



FEDERAL PACIFIC 75KVA TRANSFORMER, 480 PRIMARY, 240 SECONDARY, 3 PHASE

Lot #94I (Sale Order 94 of 301)

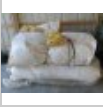
FEDERAL PACIFIC 75KVA TRANSFORMER, 480 PRIMARY, 240 SECONDARY, 3 PHASE



APPROX. (10) ASSORTED RUBBERMAID WATER JUGS

Lot #95 (Sale Order 95 of 301)

APPROX. (10) ASSORTED RUBBERMAID WATER JUGS



ASSORTED INSULATION

Lot #96 (Sale Order 96 of 301)

ASSORTED INSULATION



ASSORTED PLANTING POTS AND ASSORTED FLATS

Lot #97 (Sale Order 97 of 301)

ASSORTED PLANTING POTS AND ASSORTED FLATS



ASSEMBLED 3 PT TRENCHER

Lot #98 (Sale Order 98 of 301)

ASSEMBLED 3 PT TRENCHER



PORTABLE ELECTRIC CONVEYOR, APPROX. 160" LONG x 12" WIDE

Lot #99 (Sale Order 99 of 301)

PORTABLE ELECTRIC CONVEYOR, APPROX. 160" LONG x 12" WIDE



(3) ASSORTED STEEL WHEELS

Lot #100 (Sale Order 100 of 301)

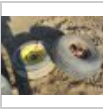
(3) ASSORTED STEEL WHEELS



(4) ASSORTED SEATS

Lot #101 (Sale Order 101 of 301)

(4) ASSORTED SEATS



(2) ASSORTED TIRES AND RIMS

Lot #102 (Sale Order 102 of 301)

(2) ASSORTED TIRES AND RIMS



ASSORTED IRRIGATION LINE

Lot #103 (Sale Order 103 of 301)

ASSORTED IRRIGATION LINE



ASSORTED IRRIGATION LINE

Lot #104 (Sale Order 104 of 301)

ASSORTED IRRIGATION LINE



GRAVITY FED TANK WITH STAND

Lot #105 (Sale Order 105 of 301)

GRAVITY FED TANK WITH STAND



GRAVITY FED TANK WITH STAND

Lot #106 (Sale Order 106 of 301)

GRAVITY FED TANK WITH STAND



BALTIC 3 PT CULTIVATOR, 68" WIDE

Lot #107 (Sale Order 107 of 301)

BALTIC 3 PT CULTIVATOR, 68" WIDE



CAPRARI TOWABLE IRRIGATION PUMP, PTO POWERED, APPROX. 4" PUMP

Lot #108 (Sale Order 108 of 301)

CAPRARI TOWABLE IRRIGATION PUMP, PTO POWERED, APPROX. 4" PUMP



FORK LIFT MAST, 3 PT

Lot #109 (Sale Order 109 of 301)

FORK LIFT MAST, 3 PT



3 PT ATTACHMENT WITH TANK

Lot #110 (Sale Order 110 of 301)

3 PT ATTACHMENT WITH TANK



3 PT TOOL BAR WITH PLASTIC TANKS

Lot #111 (Sale Order 111 of 301)

3 PT TOOL BAR WITH PLASTIC TANKS



ASSEMBLED 3 PT TOOL BAR WITH 2-ROW CULTIVATOR

Lot #112 (Sale Order 112 of 301)

ASSEMBLED 3 PT TOOL BAR WITH 2-ROW CULTIVATOR



VINTAGE 1-BOTTOM PLOW

Lot #113 (Sale Order 113 of 301)

VINTAGE 1-BOTTOM PLOW



BURCH 2-ROW CULTIVATOR

Lot #114 (Sale Order 114 of 301)

BURCH 2-ROW CULTIVATOR



ASSORTED PARTS

Lot #115 (Sale Order 115 of 301)

ASSORTED PARTS



VINTAGE TOWABLE TRENCHER

Lot #116 (Sale Order 116 of 301)

VINTAGE TOWABLE TRENCHER



TOWABLE CULTIPACKER, 102" WIDE

Lot #117 (Sale Order 117 of 301)

TOWABLE CULTIPACKER, 102" WIDE



3 PT TRANSPLANTER

Lot #118 (Sale Order 118 of 301)

3 PT TRANSPLANTER



3 PT TRANSPLANTER

Lot #119 (Sale Order 119 of 301)

3 PT TRANSPLANTER



3 PT BAR

Lot #120 (Sale Order 120 of 301)

3 PT BAR



ASSEMBLED 3 PT BAR

Lot #121 (Sale Order 121 of 301)

ASSEMBLED 3 PT BAR



ASSORTED DOLLY WHEELS

Lot #122 (Sale Order 122 of 301)

ASSORTED DOLLY WHEELS



3 PT CULTIVATOR, NOT COMPLETE

Lot #123 (Sale Order 123 of 301)

3 PT CULTIVATOR, NOT COMPLETE



3 PT BAR, NOT COMPLETE

Lot #124 (Sale Order 124 of 301)

3 PT BAR, NOT COMPLETE



PLASTIC TANK AND STEEL HOLDER

Lot #125 (Sale Order 125 of 301)

PLASTIC TANK AND STEEL HOLDER



PARTS OF A TRANSPLANTER

Lot #126 (Sale Order 126 of 301)

PARTS OF A TRANSPLANTER



3 PT SCOOP BUCKET

Lot #127 (Sale Order 127 of 301)

3 PT SCOOP BUCKET



3 PT TRENCHER

Lot #128 (Sale Order 128 of 301)

3 PT TRENCHER



3 PT BAR

Lot #129 (Sale Order 129 of 301)

3 PT BAR



3 PT BAR

Lot #130 (Sale Order 130 of 301)

3 PT BAR



3 PT CULTIVATOR

Lot #131 (Sale Order 131 of 301)

3 PT CULTIVATOR



3 PT BACK BLADE, 6'

Lot #132 (Sale Order 132 of 301)

3 PT BACK BLADE, 6'



53" ROLLER

Lot #133 (Sale Order 133 of 301)

53" ROLLER



STEEL RACK, 79" WIDE, 232" LONG

Lot #134 (Sale Order 134 of 301)

STEEL RACK, 79" WIDE, 232" LONG



TANDEM AXLE DUMP TRAILER, APPROX. 14' DUMP BOX, PIN STYLE HITCH

Lot #135 (Sale Order 135 of 301)

TANDEM AXLE DUMP TRAILER, APPROX. 14' DUMP BOX, PIN STYLE HITCH



TOWABLE FERTILIZER APPLICATOR WITH 500 GALLON TANK

Lot #136 (Sale Order 136 of 301)

TOWABLE FERTILIZER APPLICATOR WITH 500 GALLON TANK



TOWABLE FERTILIZER APPLICATOR WITH 500 GALLON TANK, DOES NOT APPEAR TO BE COMPLETE

Lot #137 (Sale Order 137 of 301)

TOWABLE FERTILIZER APPLICATOR WITH 500 GALLON TANK, DOES NOT APPEAR TO BE COMPLETE



1995 FORD F350 CREW CAB UTILITY TRUCK, POWER STROKE DIESEL ENGINE, 5 SPEED TRANSMISSION, OMAHA STEEL

Lot #138 (Sale Order 138 of 301)

1995 FORD F350 CREW CAB UTILITY TRUCK, POWER STROKE DIESEL ENGINE, 5 SPEED TRANSMISSION, OMAHA STEEL SERVICE BODY, RUNNING CONDITION UNKNOWN, REAR AXLE IS NOT IN, NON DRIVABLE, MILEAGE N/A, VIN: 1FDJW35F2SEA41846



CHEVY CUSTOM DELUXE 30 FLATBED TRUCK, GAS ENGINE, 4 SPEED TRANSMISSION, BED 129" LONG x 85.5" WIDE

Lot #139 (Sale Order 139 of 301)

CHEVY CUSTOM DELUXE 30 FLATBED TRUCK, GAS ENGINE, 4 SPEED TRANSMISSION, BED 129" LONG x 85.5" WIDE, RUNNING CONDITION UNKNOWN, VIN: CCL337V134494



NEW IDEA #12A SINGLE AXLE TOWABLE MANURE SPREADER, GROUND DRIVEN

Lot #140 (Sale Order 140 of 301)

NEW IDEA #12A SINGLE AXLE TOWABLE MANURE SPREADER, GROUND DRIVEN



FLATBED WAGON WITH CONTENTS - ASSORTED STEEL, TIRES, AXLES, AND MORE

Lot #141 (Sale Order 141 of 301)

FLATBED WAGON WITH CONTENTS - ASSORTED STEEL, TIRES, AXLES, AND MORE



SILVER EAGLE SINGLE AXLE CONVERTER DOLLY, 20,000 LB GVWR, VIN: 1U3JX741XXBJ00298

Lot #142 (Sale Order 142 of 301)

SILVER EAGLE SINGLE AXLE CONVERTER DOLLY, 20,000 LB GVWR, VIN: 1U3JX741XXBJ00298



MALLARD TANDEM AXLE 20' TRAVEL TRAILER, DATE OF MANUFACTURE 11/93, VIN: 1EF1H2226R2937733

Lot #143 (Sale Order 143 of 301)

MALLARD TANDEM AXLE 20' TRAVEL TRAILER, DATE OF MANUFACTURE 11/93, VIN: 1EF1H2226R2937733



2002 GMC BLUEBIRD BUS, CAT DIESEL ENGINE, AUTOMATIC TRANSMISSION, AIR BRAKES, RUNS AND DRIVES, 136,3

Lot #144 (Sale Order 144 of 301)

2002 GMC BLUEBIRD BUS, CAT DIESEL ENGINE, AUTOMATIC TRANSMISSION, AIR BRAKES, RUNS AND DRIVES, 136,309 MILES SHOWING, VIN: 1GDM7T1C2215077H7



2000 GMC BLUEBIRD BUS, CAT DIESEL ENGINE, AUTOMATIC TRANSMISSION, AIR BRAKES, 119,657 MILES SHOWING,

Lot #145 (Sale Order 145 of 301)

2000 GMC BLUEBIRD BUS, CAT DIESEL ENGINE, AUTOMATIC TRANSMISSION, AIR BRAKES, 119,657 MILES SHOWING, VIN: 1GDM7T1CXY1526676



1997 INTERNATIONAL 3800 BUS, T444E DIESEL ENGINE, SEATS HAVE BEEN REMOVED, RUNS AND MOVES, 139,242 M

Lot #146 (Sale Order 146 of 301)

1997 INTERNATIONAL 3800 BUS, T444E DIESEL ENGINE, SEATS HAVE BEEN REMOVED, RUNS AND MOVES, 139,242 MILES SHOWING, VIN: 1HVBBABN8VH488411



1997 INTERNATIONAL 3800 BUS, T444E DIESEL ENGINE, AUTOMATIC TRANSMISSION, AIR BRAKES, SEATS HAVE BEE

Lot #147 (Sale Order 147 of 301)

1997 INTERNATIONAL 3800 BUS, T444E DIESEL ENGINE, AUTOMATIC TRANSMISSION, AIR BRAKES, SEATS HAVE BEEN REMOVED, NON-RUNNING, NOT DRIVABLE, VIN: 1HVBBABN3VH488414



1997 INTERNATIONAL 3800 BUS, T444E DIESEL ENGINE, AUTOMATIC TRANSMISSION, AIR BRAKES, SEATS HAVE BEE

Lot #148 (Sale Order 148 of 301)

1997 INTERNATIONAL 3800 BUS, T444E DIESEL ENGINE, AUTOMATIC TRANSMISSION, AIR BRAKES, SEATS HAVE BEEN REMOVED, RUNS BUT DOES NOT MOVE, REAR AXLE IS OUT AND LAYING IN THE BACK OF THE BUS, 131,634 MILES SHOWING, VIN: 1HVBBABN1VH488413



1995 INTERNATIONAL 3800 BUS, T444E DIESEL ENGINE, AUTOMATIC TRANSMISSION, AIR BRAKES, SEATS HAVE BEE

Lot #149 (Sale Order 149 of 301)

1995 INTERNATIONAL 3800 BUS, T444E DIESEL ENGINE, AUTOMATIC TRANSMISSION, AIR BRAKES, SEATS HAVE BEEN REMOVED, 74,058 MILES SHOWING, VIN: 1HVBBABLX5H674624



CONTENTS OF BARN - ASSORTED IRRIGATION PARTS, HOSES, FILTERS, BARBED WIRE, FITTINGS, AND MORE - LOCA

Lot #150 (Sale Order 150 of 301)

CONTENTS OF BARN - ASSORTED IRRIGATION PARTS, HOSES, FILTERS, BARBED WIRE, FITTINGS, AND MORE - LOCATED BEHIND HOUSE



CONTENTS AROUND BARN - OLDER INCOMPLETE 3 PT ATTACHMENTS, TIRES AND RIMS, CULTIVATOR, PLASTIC TANKS,

Lot #151 (Sale Order 151 of 301)

CONTENTS AROUND BARN - OLDER INCOMPLETE 3 PT ATTACHMENTS, TIRES AND RIMS, CULTIVATOR, PLASTIC TANKS, 4x4S - LOCATED BEHIND HOUSE



APPROX. (200) ASSORTED RE-ROD, APPROX. 4' LONG - LOCATED BEHIND HOUSE NEXT TO BARN

Lot #152 (Sale Order 152 of 301)

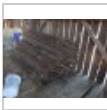
APPROX. (200) ASSORTED RE-ROD, APPROX. 4' LONG - LOCATED BEHIND HOUSE NEXT TO BARN



ASSORTED WIRE TIES - LOCATED BEHIND HOUSE IN THE BARN

Lot #153 (Sale Order 153 of 301)

ASSORTED WIRE TIES - LOCATED BEHIND HOUSE IN THE BARN



(2) SKIDS OF FENCE POSTS - LOCATED BEHIND HOUSE IN TOP OF BARN

Lot #154 (Sale Order 154 of 301)

(2) SKIDS OF FENCE POSTS - LOCATED BEHIND HOUSE IN TOP OF BARN



(2) + SKIDS OF ASSORTED WHITE MESH - LOCATED BEHIND HOUSE IN TOP OF BARN

Lot #155 (Sale Order 155 of 301)

(2) + SKIDS OF ASSORTED WHITE MESH - LOCATED BEHIND HOUSE IN TOP OF BARN



HOOP STYLE GREENHOUSE, 92' LONG X 30' WIDE, MODINE HEATER, (2) FANS, BUYER IS RESPONSIBLE FOR REMOVA

Lot #156 (Sale Order 156 of 301)

HOOP STYLE GREENHOUSE, 92' LONG X 30' WIDE, MODINE HEATER, (2) FANS, BUYER IS RESPONSIBLE FOR REMOVAL



HOOP STYLE GREENHOUSE, 64' LONG X 24' WIDE, (2) MODINE HEATERS, BUYER IS RESPONSIBLE FOR REMOVAL

Lot #157 (Sale Order 157 of 301)

HOOP STYLE GREENHOUSE, 64' LONG X 24' WIDE, (2) MODINE HEATERS, BUYER IS RESPONSIBLE FOR REMOVAL



MODINE HEATER AND (2) ELECTRIC FANS FROM WOODEN FRAME GREENHOUSE - LOCATED BEHIND HOUSE

Lot #158 (Sale Order 158 of 301)

MODINE HEATER AND (2) ELECTRIC FANS FROM WOODEN FRAME GREENHOUSE - LOCATED BEHIND HOUSE



MODINE HEATER AND (1) ELECTRIC FAN FROM WOODEN FRAME GREENHOUSE

Lot #159 (Sale Order 159 of 301)

MODINE HEATER AND (1) ELECTRIC FAN FROM WOODEN FRAME GREENHOUSE



MODINE HEATER FROM WOODEN FRAME GREENHOUSE

Lot #160 (Sale Order 160 of 301)

MODINE HEATER FROM WOODEN FRAME GREENHOUSE



2011 FORD E350 PASSENGER VAN, 5.4 LITER GAS ENGINE, AUTOMATIC TRANSMISSION, AM/FM/CD RADIO, FRONT AN

Lot #161 (Sale Order 161 of 301)

2011 FORD E350 PASSENGER VAN, 5.4 LITER GAS ENGINE, AUTOMATIC TRANSMISSION, AM/FM/CD RADIO, FRONT AND REAR HEAT, POWER WINDOWS, POWER LOCKS, 54,866 MILES SHOWING, VIN: 1FBNE3BL7BDB18434



1997 FORD EXPLORER XLT FOUR DOOR, 4.0 LITER GAS ENGINE, AUTOMATIC TRANSMISSION, 4 WD, AM/FM/CASSETTE

Lot #162 (Sale Order 162 of 301)

1997 FORD EXPLORER XLT FOUR DOOR, 4.0 LITER GAS ENGINE, AUTOMATIC TRANSMISSION, 4 WD, AM/FM/CASSETTE RADIO, AIR CONDITIONING, INTERIOR DIRTY, SEATS ARE RIPPED, 118,652 MILES SHOWING, VIN: 1FMDU34E8VUC58517



JOHN DEERE 4-ROW CORN PLANTER, 1980 - LOCATED AT OTHER FARM 1 MILE DOWN THE ROAD

Lot #163 (Sale Order 163 of 301)

JOHN DEERE 4-ROW CORN PLANTER, 1980 - LOCATED AT OTHER FARM 1 MILE DOWN THE ROAD



DISC, 11' - LOCATED AT OTHER FARM 1 MILE DOWN THE ROAD

Lot #164 (Sale Order 164 of 301)

DISC, 11' - LOCATED AT OTHER FARM 1 MILE DOWN THE ROAD



5-BOTTOM PLOW - LOCATED AT OTHER FARM 1 MILE DOWN THE ROAD

Lot #165 (Sale Order 165 of 301)

5-BOTTOM PLOW - LOCATED AT OTHER FARM 1 MILE DOWN THE ROAD



DEUTZ-ALLIS 6275 TRACTOR, 1994, 3 PT, PTO, MISSING THIRD LINK, 2 REMOTES, CANOPY, 18.4-34 REAR TIRES

Lot #166 (Sale Order 166 of 301)

DEUTZ-ALLIS 6275 TRACTOR, 1994, 3 PT, PTO, MISSING THIRD LINK, 2 REMOTES, CANOPY, 18.4-34 REAR TIRES, 14.9-24 FRONT TIRES, CURRENTLY NON-RUNNING - LOCATED AT OTHER FARM 1 MILE DOWN THE ROAD



APPROX. (18) ASSORTED WOODEN CRATES, APPROX. (10) ASSORTED PLASTIC COLLAPSABLE TOTES - LOCATED AT OT

Lot #167 (Sale Order 167 of 301)

APPROX. (18) ASSORTED WOODEN CRATES, APPROX. (10) ASSORTED PLASTIC COLLAPSABLE TOTES - LOCATED AT OTHER FARM 1 MILE DOWN THE ROAD



ASSORTED PLASTIC TOTES - LOCATED AT OTHER FARM 1 MILE DOWN THE ROAD

Lot #168 (Sale Order 168 of 301)

ASSORTED PLASTIC TOTES - LOCATED AT OTHER FARM 1 MILE DOWN THE ROAD



RAIN-FLO TOWABLE IRRIGATION PUMP, DEUTZ DIESEL ENGINE, FRONT DIESEL TANK, HAS BEARING OR HUB PROBLEM

Lot #169A (Sale Order 169 of 301)

RAIN-FLO TOWABLE IRRIGATION PUMP, DEUTZ DIESEL ENGINE, FRONT DIESEL TANK, HAS BEARING OR HUB PROBLEM, 6" SUCTION HOSE, 4" OUTLET HOSE, 219 HOURS SHOWING - LOCATED AT OTHER FARM 1 MILE DOWN THE ROAD



ASSORTED IRRIGATION PIPE, 4", 6", WITH IRRIGATION PIPE TRAILER - LOCATED AT OTHER FARM 1 MILE DOWN

Lot #170 (Sale Order 170 of 301)

ASSORTED IRRIGATION PIPE, 4", 6", WITH IRRIGATION PIPE TRAILER - LOCATED AT OTHER FARM 1 MILE DOWN THE ROAD



ASSORTED FIRE WOOD, LOCATED IN FIELD BARN, BUYER RESPONSIBLE FOR REMOVAL AND MUST PROVIDE LIABILITY

Lot #171 (Sale Order 171 of 301)

ASSORTED FIRE WOOD, LOCATED IN FIELD BARN, BUYER RESPONSIBLE FOR REMOVAL AND MUST PROVIDE LIABILITY INSURANCE



APPROX. 21 SKIDS OF ASSORTED CARDBOARD BOXES, APPEAR TO BE NEW - LOCATED AT OTHER FARM 1 MILE DOWN T

Lot #172 (Sale Order 172 of 301)

APPROX. 21 SKIDS OF ASSORTED CARDBOARD BOXES, APPEAR TO BE NEW - LOCATED AT OTHER FARM 1 MILE DOWN THE ROAD



(2) HOOP STYLE GREENHOUSES, APPROX. 24' WIDE, 85' LONG, (2) MODINE HEATERS - LOCATED AT OTHER FARM 1

Lot #173 (Sale Order 173 of 301)

(2) HOOP STYLE GREENHOUSES, APPROX. 24' WIDE, 85' LONG, (2) MODINE HEATERS - LOCATED AT OTHER FARM 1 MILE DOWN THE ROAD



KENMORE REFRIGERATOR/FREEZER, GE ELECTRIC STOVE, MAYTAG REFRIGERATOR/FREEZER, BUNK BEDS, WOODEN TABL

Lot #173A (Sale Order 173 of 301)

KENMORE REFRIGERATOR/FREEZER, GE ELECTRIC STOVE, MAYTAG REFRIGERATOR/FREEZER, BUNK BEDS, WOODEN TABLE - LOCATED AT OTHER FARM 1 MILE DOWN THE ROAD



KENMORE REFRIGERATOR/FREEZER, GE ELECTRIC STOVE, MAYTAG REFRIGERATOR/FREEZER, (4) BUNK BEDS, WOODEN T

Lot #173B (Sale Order 173 of 301)

KENMORE REFRIGERATOR/FREEZER, GE ELECTRIC STOVE, MAYTAG REFRIGERATOR/FREEZER, (4) BUNK BEDS, WOODEN TABLE - LOCATED AT OTHER FARM 1 MILE DOWN THE ROAD



KENMORE REFRIGERATOR/FREEZER, GE ELECTRIC STOVE, (4) BUNK BEDS, WOODEN TABLE - LOCATED AT OTHER FARM

Lot #173C (Sale Order 173 of 301)

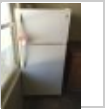
KENMORE REFRIGERATOR/FREEZER, GE ELECTRIC STOVE, (4) BUNK BEDS, WOODEN TABLE - LOCATED AT OTHER FARM 1 MILE DOWN THE ROAD



KENMORE REFRIGERATOR/FREEZER, GE ELECTRIC STOVE, (4) BUNK BEDS, WOODEN TABLE - LOCATED AT OTHER FARM

Lot #173D (Sale Order 173 of 301)

KENMORE REFRIGERATOR/FREEZER, GE ELECTRIC STOVE, (4) BUNK BEDS, WOODEN TABLE - LOCATED AT OTHER FARM 1 MILE DOWN THE ROAD



KENMORE REFRIGERATOR/FREEZER, GE ELECTRIC STOVE, (4) BUNK BEDS, WOODEN TABLE - LOCATED AT OTHER FARM

Lot #173E (Sale Order 173 of 301)

KENMORE REFRIGERATOR/FREEZER, GE ELECTRIC STOVE, (4) BUNK BEDS, WOODEN TABLE - LOCATED AT OTHER FARM 1 MILE DOWN THE ROAD



KENMORE REFRIGERATOR/FREEZER, GE ELECTRIC STOVE, (4) BUNK BEDS, WOODEN TABLE - LOCATED AT OTHER FARM

Lot #173F (Sale Order 173 of 301)

KENMORE REFRIGERATOR/FREEZER, GE ELECTRIC STOVE, (4) BUNK BEDS, WOODEN TABLE - LOCATED AT OTHER FARM 1 MILE DOWN THE ROAD



SAMSUNG FRONT LOAD WASHER - LOCATED AT OTHER FARM 1 MILE DOWN THE ROAD

Lot #173G (Sale Order 173 of 301)

SAMSUNG FRONT LOAD WASHER - LOCATED AT OTHER FARM 1 MILE DOWN THE ROAD



SAMSUNG FRONT LOAD WASHER - LOCATED AT OTHER FARM 1 MILE DOWN THE ROAD

Lot #173H (Sale Order 173 of 301)

SAMSUNG FRONT LOAD WASHER - LOCATED AT OTHER FARM 1 MILE DOWN THE ROAD



ADMIRAL ELECTRIC DRYER - LOCATED AT OTHER FARM 1 MILE DOWN THE ROAD

Lot #173I (Sale Order 173 of 301)

ADMIRAL ELECTRIC DRYER - LOCATED AT OTHER FARM 1 MILE DOWN THE ROAD



ADMIRAL ELECTRIC DRYER - LOCATED AT OTHER FARM 1 MILE DOWN THE ROAD

Lot #173J (Sale Order 173 of 301)

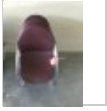
ADMIRAL ELECTRIC DRYER - LOCATED AT OTHER FARM 1 MILE DOWN THE ROAD



ADMIRAL ELECTRIC DRYER - LOCATED AT OTHER FARM 1 MILE DOWN THE ROAD

Lot #173K (Sale Order 173 of 301)

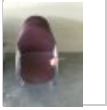
ADMIRAL ELECTRIC DRYER - LOCATED AT OTHER FARM 1 MILE DOWN THE ROAD



(4) STACKABLE METAL FRAME AND VINYL CHAIRS - LOCATED AT OTHER FARM 1 MILE DOWN THE ROAD

Lot #173L (Sale Order 173 of 301)

(4) STACKABLE METAL FRAME AND VINYL CHAIRS - LOCATED AT OTHER FARM 1 MILE DOWN THE ROAD



(4) STACKABLE METAL FRAME AND VINYL CHAIRS - LOCATED AT OTHER FARM 1 MILE DOWN THE ROAD

Lot #173M (Sale Order 173 of 301)

(4) STACKABLE METAL FRAME AND VINYL CHAIRS - LOCATED AT OTHER FARM 1 MILE DOWN THE ROAD



(4) STACKABLE METAL FRAME AND VINYL CHAIRS - LOCATED AT OTHER FARM 1 MILE DOWN THE ROAD

Lot #173N (Sale Order 173 of 301)

(4) STACKABLE METAL FRAME AND VINYL CHAIRS - LOCATED AT OTHER FARM 1 MILE DOWN THE ROAD



(4) STACKABLE METAL FRAME AND VINYL CHAIRS - LOCATED AT OTHER FARM 1 MILE DOWN THE ROAD

Lot #173P (Sale Order 173 of 301)

(4) STACKABLE METAL FRAME AND VINYL CHAIRS - LOCATED AT OTHER FARM 1 MILE DOWN THE ROAD



ASSEMBLED TANDEM AXLE TANK TRAILER, BRIGGS & STRATTON GAS ENGINE, 1150 GALLON TANK

Lot #174 (Sale Order 174 of 301)

ASSEMBLED TANDEM AXLE TANK TRAILER, BRIGGS & STRATTON GAS ENGINE, 1150 GALLON TANK



JOHN DEERE 8300 GRAIN DRILL, TYPE 187F, S/N 004630N

Lot #175 (Sale Order 175 of 301)

JOHN DEERE 8300 GRAIN DRILL, TYPE 187F, S/N 004630N



BUCKEYE TRACTOR 3-ROW DRUM TYPE PLANTER, 2008, 3 PT, (3) 165 GALLON TANKS

Lot #176 (Sale Order 176 of 301)

BUCKEYE TRACTOR 3-ROW DRUM TYPE PLANTER, 2008, 3 PT, (3) 165 GALLON TANKS



RAIN-FLO 2550 SERIES 2 PLASTIC MULCH LAYER, 3 PT

Lot #177 (Sale Order 177 of 301)

RAIN-FLO 2550 SERIES 2 PLASTIC MULCH LAYER, 3 PT



JOHN DEERE 1590 GRAIN DRILL, 2004, TANDEM TRICYCLE FRONT, ROW MARKERS, S/N N01590X705841

Lot #178 (Sale Order 178 of 301)

JOHN DEERE 1590 GRAIN DRILL, 2004, TANDEM TRICYCLE FRONT, ROW MARKERS, S/N N01590X705841



ASSORTED PLASTIC SKIDS AND PLASTIC TUBS

Lot #179 (Sale Order 179 of 301)

ASSORTED PLASTIC SKIDS AND PLASTIC TUBS



APPROX. (500) ASSORTED WOODEN SKIDS

Lot #180 (Sale Order 180 of 301)

APPROX. (500) ASSORTED WOODEN SKIDS



APPROX. (500) ASSORTED WOODEN SKIDS

Lot #181 (Sale Order 181 of 301)

APPROX. (500) ASSORTED WOODEN SKIDS



ASSORTED PLASTIC TOTES, SKID TYPE

Lot #181A (Sale Order 181 of 301)

ASSORTED PLASTIC TOTES, SKID TYPE



DOSATRON FILTER WITH (2) 65 GALLON TANKS

Lot #181B (Sale Order 181 of 301)

DOSATRON FILTER WITH (2) 65 GALLON TANKS



DOSATRON FILTER

Lot #181C (Sale Order 181 of 301)

DOSATRON FILTER



DOSATRON FILTER

Lot #181D (Sale Order 181 of 301)

DOSATRON FILTER



DOSATRON FILTER

Lot #181E (Sale Order 181 of 301)

DOSATRON FILTER



ADVANTAGE A30 MIXER/FILTER

Lot #181F (Sale Order 181 of 301)

ADVANTAGE A30 MIXER/FILTER



(2) DOSATRON FILTERS

Lot #181G (Sale Order 181 of 301)

(2) DOSATRON FILTERS



JOHN DEERE T0210 14' DISC

Lot #182 (Sale Order 182 of 301)

JOHN DEERE T0210 14' DISC



BRILLION CULTIVATOR, 3 PT, 16' WIDE

Lot #183 (Sale Order 183 of 301)

BRILLION CULTIVATOR, 3 PT, 16' WIDE



JOHN DEERE 630 DISC, 2015, WING FOLD

Lot #183A (Sale Order 183 of 301)

JOHN DEERE 630 DISC, 2015, WING FOLD



AMCO F45 DISC, 2014, LOCATED IN PARRISH, FLORIDA BETWEEN TAMPA AND BRADENTON

Lot #183B (Sale Order 183 of 301)

AMCO F45 DISC, 2014, LOCATED IN PARRISH, FLORIDA BETWEEN TAMPA AND BRADENTON



RAIN-FLO 2600 PLASTIC MULCH LAYER SERIES II - LOCATED IN PARRISH, FLORIDA BETWEEN TAMPA & BRADENTON

Lot #183C (Sale Order 183 of 301)

RAIN-FLO 2600 PLASTIC MULCH LAYER SERIES II - LOCATED IN PARRISH, FLORIDA BETWEEN TAMPA AND BRADENTON



KENNCO DITCHER, 3 PT, 2014 - LOCATED IN PARRISH, FLORIDA BETWEEN TAMPA AND BRADENTON

Lot #183D (Sale Order 183 of 301)

KENNCO DITCHER, 3 PT, 2014 - LOCATED IN PARRISH, FLORIDA BETWEEN TAMPA AND BRADENTON



SUNFLOWER FIELD CULTIVATOR, APPROX. 28', 5-BAR SPIKE TOOTH DRAG, WING FOLD, MISSING CYLINDER - LOCATED

Lot #183E (Sale Order 183 of 301)

SUNFLOWER FIELD CULTIVATOR, APPROX. 28', 5-BAR SPIKE TOOTH DRAG, WING FOLD, MISSING CYLINDER - LOCATED OFFSITE 4 MILES AWAY, BUYER RESPONSIBLE FOR REMOVAL



BRILLION 11-SHANK DISC RIPPER, HUB IS BROKEN OFF - LOCATED OFFSITE 4 MILES AWAY, BUYER RESPONSIBLE F

Lot #183F (Sale Order 183 of 301)

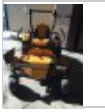
BRILLION 11-SHANK DISC RIPPER, HUB IS BROKEN OFF - LOCATED OFFSITE 4 MILES AWAY, BUYER RESPONSIBLE FOR REMOVAL



ASSORTED TRASH CANS, 6' FIBERGLASS STEP LADDER, PALLET JACK, ASSORTED BROOMS, SHOVELS, SQUEEGEES

Lot #184 (Sale Order 184 of 301)

ASSORTED TRASH CANS, 6' FIBERGLASS STEP LADDER, PALLET JACK, ASSORTED BROOMS, SHOVELS, SQUEEGEES



CUB CADET TANK LZ COMMERCIAL ZERO TURN MOWER, 2015, KOHLER GAS ENGINE, 60" DECK, PIVOTING FRONT AXL

Lot #184A (Sale Order 184 of 301)

CUB CADET TANK LZ COMMERCIAL ZERO TURN MOWER, 2015, KOHLER GAS ENGINE, 60" DECK, PIVOTING FRONT AXLE



CASE INTERNATIONAL DISC, WING FOLD, NOT COMPLETE, ASSORTED NEW PARTS TO INCLUDE DISCS, BEARINGS, SPA

Lot #185 (Sale Order 185 of 301)

CASE INTERNATIONAL DISC, WING FOLD, NOT COMPLETE, ASSORTED NEW PARTS TO INCLUDE DISCS, BEARINGS, SPACERS, AND RODS



MS 60VV SPRAYER, 60' BOOM, 500 GALLON TANK, S/N AG3009957

Lot #186 (Sale Order 186 of 301)

MS 60VV SPRAYER, 60' BOOM, 500 GALLON TANK, S/N AG3009957



BUHLER FARM KING 7' ROTO TILLER, 2003, 3 PT

Lot #187 (Sale Order 187 of 301)

BUHLER FARM KING 7' ROTO TILLER, 2003, 3 PT



BUHLER FARM KING 6' ROTO TILLER, 2003, 3 PT

Lot #188 (Sale Order 188 of 301)

BUHLER FARM KING 6' ROTO TILLER, 2003, 3 PT



MATER MACC VACUUM PLANTER, 2006, 1-ROW, 3 PT, S/N NM-1BCNT 4-07-8

Lot #189 (Sale Order 189 of 301)

MATER MACC VACUUM PLANTER, 2006, 1-ROW, 3 PT, S/N NM-1BCNT 4-07-8



DRUM PUNCH PLANTER VACUUM, 3 PT, PTO, 100 GALLON PLASTIC TANK, S/N 0508

Lot #190 (Sale Order 190 of 301)

DRUM PUNCH PLANTER VACUUM, 3 PT, PTO, 100 GALLON PLASTIC TANK, S/N 0508



BUCKEYE TRACTOR MULCH LAYER

Lot #191 (Sale Order 191 of 301)

BUCKEYE TRACTOR MULCH LAYER



ABI 110 TOWABLE IRRIGATION TRAVELER, 2012, MODEL GX1101210, WITH SPRINKLERS, S/N 691312

Lot #192 (Sale Order 192 of 301)

ABI 110 TOWABLE IRRIGATION TRAVELER, 2012, MODEL GX1101210, WITH SPRINKLERS, S/N 691312



AG-RAIN TANDEM AXLE IRRIGATION TRAVELER, MODEL T40A-2, WITH SPRINKLERS, S/N 34074

Lot #193 (Sale Order 193 of 301)

AG-RAIN TANDEM AXLE IRRIGATION TRAVELER, MODEL T40A-2, WITH SPRINKLERS, S/N 34074



AG-RAIN SINGLE AXLE IRRIGATION TRAVELER, WITH SPRINKLERS

Lot #194 (Sale Order 194 of 301)

AG-RAIN SINGLE AXLE IRRIGATION TRAVELER, WITH SPRINKLERS



RAIN-FLO CHALLENGER 1800 PLASTIC MULCH LIFTER

Lot #195 (Sale Order 195 of 301)

RAIN-FLO CHALLENGER 1800 PLASTIC MULCH LIFTER



BEI SINGLE AXLE TOWABLE IRRIGATION PUMP, CUMMINS DIESEL ENGINE, 10" INLET, 6" OUTLET, WORKING COND

Lot #196 (Sale Order 196 of 301)

BEI SINGLE AXLE TOWABLE IRRIGATION PUMP, CUMMINS DIESEL ENGINE, 10" INLET, 6" OUTLET, WORKING CONDITION UNKNOWN, 1750 HOURS SHOWING



PORTABLE IRRIGATION PUMP, PTO POWERED

Lot #196A (Sale Order 196 of 301)

PORTABLE IRRIGATION PUMP, PTO POWERED



BUSH HOG 297 3 PT BRUSH HOG, UNKNOWN IF COMPLETE, BLADES SITTING ON TOP OF UNIT

Lot #197 (Sale Order 197 of 301)

BUSH HOG 297 3 PT BRUSH HOG, UNKNOWN IF COMPLETE, BLADES SITTING ON TOP OF UNIT



WOODS BRUSH BANDIT 7' BRUSH HOG, 2013, 3 PT, PTO

Lot #198 (Sale Order 198 of 301)

WOODS BRUSH BANDIT 7' BRUSH HOG, 2013, 3 PT, PTO



5-BAR RIPPER, 3 PT

Lot #199 (Sale Order 199 of 301)

5-BAR RIPPER, 3 PT



RIPPER, MISSING PARTS, NOT COMPLETE, 3 PT

Lot #200 (Sale Order 200 of 301)

RIPPER, MISSING PARTS, NOT COMPLETE, 3 PT



BRECKNELL DIGITAL PLATFORM SCALE, 4'x4'

Lot #201 (Sale Order 201 of 301)

BRECKNELL DIGITAL PLATFORM SCALE, 4'x4'



LINCOLN POWER MIG 255 WELDER

Lot #202 (Sale Order 202 of 301)

LINCOLN POWER MIG 255 WELDER



MILLER BOBCAT T250 AC/DC WELDER, 2014, 11,000 WATT GENERATOR, DOES RUN, 18.1 HOURS SHOWING

Lot #203 (Sale Order 203 of 301)

MILLER BOBCAT T250 AC/DC WELDER, 2014, 11,000 WATT GENERATOR, DOES RUN, 18.1 HOURS SHOWING



MODINE HEATER, APPEARS TO BE NEW, IN BOX

Lot #204 (Sale Order 204 of 301)

MODINE HEATER, APPEARS TO BE NEW, IN BOX



VINTAGE STYLE WOOD WAGON WITH BENCH SEAT

Lot #205 (Sale Order 205 of 301)

VINTAGE STYLE WOOD WAGON WITH BENCH SEAT



SKID OF ASSORTED BOX TOPS

Lot #206 (Sale Order 206 of 301)

SKID OF ASSORTED BOX TOPS



SKID OF ASSORTED PUMPKIN BOXES

Lot #207 (Sale Order 207 of 301)

SKID OF ASSORTED PUMPKIN BOXES



WASH LINE, ELECTRIC MOTOR, ROLLING CONVEYOR AND BELT-TYPE CONVEYOR

Lot #208 (Sale Order 208 of 301)

WASH LINE, ELECTRIC MOTOR, ROLLING CONVEYOR AND BELT-TYPE CONVEYOR



CASE 3240 PATRIOT SPRAYER, 2015, 800 GALLON TANK, APPROX. 80' BOOM, 380/85R46 TIRES, 305 HOURS SHOWI

Lot #209 (Sale Order 209 of 301)

CASE 3240 PATRIOT SPRAYER, 2015, 800 GALLON TANK, APPROX. 80' BOOM, 380/85R46 TIRES, 305 HOURS SHOWING, S/N YET040562



CASE 2240 PATRIOT SPRAYER, 2014 - LOCATED IN PARRISH, FLORIDA BETWEEN TAMPA AND BRADENTON

Lot #209A (Sale Order 209 of 301)

CASE 2240 PATRIOT SPRAYER, 2014 - LOCATED IN PARRISH, FLORIDA BETWEEN TAMPA AND BRADENTON



CASE STEIGER 370 ARTICULATING TRACTOR, 2014, DUALS ALL THE WAY AROUND, 498 HOURS SHOWING -IN FLORIDA

Lot #209B (Sale Order 209 of 301)

CASE STEIGER 370 ARTICULATING TRACTOR, 2014, DUALS ALL THE WAY AROUND, 498 HOURS SHOWING - LOCATED IN PARRISH, FLORIDA BETWEEN TAMPA AND BRADENTON



CASE MAGNUM 340 CVT 4-WHEEL DRIVE TRACTOR, 2014, 3 PT, PTO, DIGITAL DISPLAY, AM/FM/CD RADIO

Lot #210 (Sale Order 210 of 301)

CASE MAGNUM 340 CVT 4-WHEEL DRIVE TRACTOR, 2014, 3 PT, PTO, DIGITAL DISPLAY, AM/FM/CD RADIO, HEAT AND AIR, BUDDY SEAT, 5 REMOTES, 10 FRONT WEIGHTS, 480/80R50 REAR DUALS, 380/80R38 FRONT DUALS, 794 HOURS SHOWING, S/N ZERD03214



CASE 235 MAGNUM TRACTOR, 2012, MFWD, 3 PT, QUICK HITCH, PTO, 4 REMOTES, DUALS ALL THE WAY AROUND

Lot #210A (Sale Order 210 of 301)

CASE 235 MAGNUM TRACTOR, 2012, MFWD, 3 PT, QUICK HITCH, PTO, 4 REMOTES, DUALS ALL THE WAY AROUND, 6 FRONT WEIGHTS, 1595 HOURS SHOWING, S/N DEG0067973



CASE MAGNUM 200 TRACTOR, 2015, MFWD, 3 PT, PTO, 3 REMOTES, CAB - LOCATED IN PARRISH, FLORIDA

Lot #210B (Sale Order 210 of 301)

CASE MAGNUM 200 TRACTOR, 2105, MFWD, 3 PT, PTO, 3 REMOTES, CAB - LOCATED IN PARRISH, FLORIDA BETWEEN TAMPA AND BRADENTON



CASE 95C TRACTOR WITH CASE L630 LOADER ATTACHMENT, 2013, 4 WD, 3 PT, PTO, JENSEN HEAVY DUTY AM/FM WB

Lot #211 (Sale Order 211 of 301)

CASE 95C TRACTOR WITH CASE L630 LOADER ATTACHMENT, 2013, 4 WD, 3 PT, PTO, JENSEN HEAVY DUTY AM/FM WB RECEIVER RADIO, BUDDY SEAT, 2 REMOTES, 18.4R34 REAR TIRES, 14.9R24 FRONT TIRES, DRIVERS SIDE CAB DOOR GLASS IS BROKEN, DAMAGE TO LEFT TOP CAB, MARKER LIGHT, AND FENDER, 1843 HOURS SHOWING, S/N ZDJX50819



NEW HOLLAND T6050 TRACTOR, 2008, 4 WD, 3 PT, PTO, NO RADIO, BUDDY SEAT, 3 REMOTES, CAB

Lot #212 (Sale Order 212 of 301)

NEW HOLLAND T6050 TRACTOR, 2008, 4 WD, 3 PT, PTO, NO RADIO, BUDDY SEAT, 3 REMOTES, CAB, 10 FRONT WEIGHTS, 480-80R42 REAR TIRES, 380-85R30 FRONT TIRES, 6459 HOURS SHOWING, S/N Z7BD03452 B32C7B



CASE MAXUM MXM140 TRACTOR, 2006, 4 WD, 3 PT, PTO, 3 REMOTES, FRONT 3 PT, 2 FRONT HYDRAULIC REMOTES

Lot #213 (Sale Order 213 of 301)

CASE MAXUM MXM140 TRACTOR, 2006, 4 WD, 3 PT, PTO, 3 REMOTES, FRONT 3 PT, 2 FRONT HYDRAULIC REMOTES, CAB, 10 FRONT WEIGHTS, 480-80R42 REAR TIRES, 380-85R30 FRONT TIRES, 8885 HOURS SHOWING, S/N ACM256161MCC78A2



JOHN DEERE 7405 TRACTOR, MFWD, 3 PT, PTO, 2 REMOTES, REAR JOHN DEERE QUICK HITCH, FRONT 3 PT, CANOPY

Lot #214 (Sale Order 214 of 301)

JOHN DEERE 7405 TRACTOR, MFWD, 3 PT, PTO, 2 REMOTES, REAR JOHN DEERE QUICK HITCH, FRONT 3 PT, CANOPY, 320-90R50 REAR TIRES, 320-85R34 FRONT TIRES, 5752 HOURS SHOWING



JOHN DEERE 7405 TRACTOR, MFWD, 3 PT, PTO, 2 REMOTES, QUICK HITCH, FRONT 3 PT, CANOPY, 320-90R50 REAR

Lot #215 (Sale Order 215 of 301)

JOHN DEERE 7405 TRACTOR, MFWD, 3 PT, PTO, 2 REMOTES, QUICK HITCH, FRONT 3 PT, CANOPY, 320-90R50 REAR TIRES, 320-85R34 FRONT TIRES, 5870 HOURS SHOWING



CAT MODEL GP15K LP GAS FORK LIFT, SOLID RUBBER TIRES, 3-STAGE MAST, SIDE SHIFT, 5172 HOURS SHOWING,

Lot #215A (Sale Order 215 of 301)

CAT MODEL GP15K LP GAS FORK LIFT, SOLID RUBBER TIRES, 3-STAGE MAST, SIDE SHIFT, 5172 HOURS SHOWING, S/N AT31A-50443



STEEL FARM WAGON, TANDEM REARS, 24' LONG X 8' WIDE

Lot #216 (Sale Order 216 of 301)

STEEL FARM WAGON, TANDEM REARS, 24' LONG X 8' WIDE



STEEL FARM WAGON, TANDEM REARS, 24' LONG X 8' WIDE, SIDES FOLD DOWN

Lot #217 (Sale Order 217 of 301)

STEEL FARM WAGON, TANDEM REARS, 24' LONG X 8' WIDE, SIDES FOLD DOWN



STEEL FARM WAGON, TANDEM REARS, 24' LONG X 8' WIDE, SIDES FOLD DOWN

Lot #218 (Sale Order 218 of 301)

STEEL FARM WAGON, TANDEM REARS, 24' LONG X 8' WIDE, SIDES FOLD DOWN



STEEL FARM WAGON, TANDEM REARS, 24' LONG X 8' WIDE

Lot #219 (Sale Order 219 of 301)

STEEL FARM WAGON, TANDEM REARS, 24' LONG X 8' WIDE



STEEL FARM WAGON, TANDEM REARS, 24' LONG X 8' WIDE, HAS FLAT REAR TIRE

Lot #220 (Sale Order 220 of 301)

STEEL FARM WAGON, TANDEM REARS, 24' LONG X 8' WIDE, HAS FLAT REAR TIRE



STEEL FARM WAGON, TANDEM REARS, 24' LONG X 8' WIDE

Lot #221 (Sale Order 221 of 301)

STEEL FARM WAGON, TANDEM REARS, 24' LONG X 8' WIDE



STEEL FARM WAGON, TANDEM REARS, 24' LONG X 8' WIDE, SIDES FOLD DOWN

Lot #222 (Sale Order 222 of 301)

STEEL FARM WAGON, TANDEM REARS, 24' LONG X 8' WIDE, SIDES FOLD DOWN



STEEL FARM WAGON, TANDEM REARS, 24' LONG X 8' WIDE

Lot #223 (Sale Order 223 of 301)

STEEL FARM WAGON, TANDEM REARS, 24' LONG X 8' WIDE



STEEL FARM WAGON, TANDEM REARS, 24' LONG X 8' WIDE

Lot #224 (Sale Order 224 of 301)

STEEL FARM WAGON, TANDEM REARS, 24' LONG X 8' WIDE



STEEL FARM WAGON, TANDEM REARS, 24' LONG X 8' WIDE, SIDES FOLD DOWN

Lot #225 (Sale Order 225 of 301)

STEEL FARM WAGON, TANDEM REARS, 24' LONG X 8' WIDE, SIDES FOLD DOWN



STEEL FARM WAGON, TANDEM REARS, 24' LONG X 8' WIDE, SIDES FOLD DOWN

Lot #226 (Sale Order 226 of 301)

STEEL FARM WAGON, TANDEM REARS, 24' LONG X 8' WIDE, SIDES FOLD DOWN



STEEL FARM WAGON, TANDEM REARS, 24' LONG X 8' WIDE

Lot #227 (Sale Order 227 of 301)

STEEL FARM WAGON, TANDEM REARS, 24' LONG X 8' WIDE



STEEL FARM WAGON, TANDEM REARS, 24' LONG X 8' WIDE, SIDES FOLD DOWN

Lot #228 (Sale Order 228 of 301)

STEEL FARM WAGON, TANDEM REARS, 24' LONG X 8' WIDE, SIDES FOLD DOWN



STEEL FARM WAGON, TANDEM REARS, 24' LONG X 8' WIDE

Lot #229 (Sale Order 229 of 301)

STEEL FARM WAGON, TANDEM REARS, 24' LONG X 8' WIDE



STEEL FARM WAGON, TANDEM REARS, 24' LONG X 8' WIDE, SIDES FOLD DOWN

Lot #230 (Sale Order 230 of 301)

STEEL FARM WAGON, TANDEM REARS, 24' LONG X 8' WIDE, SIDES FOLD DOWN



STEEL FARM WAGON, TANDEM REARS, 24' LONG X 8' WIDE

Lot #231 (Sale Order 231 of 301)

STEEL FARM WAGON, TANDEM REARS, 24' LONG X 8' WIDE



STEEL FARM WAGON, TANDEM REARS, 24' LONG X 8' WIDE

Lot #232 (Sale Order 232 of 301)

STEEL FARM WAGON, TANDEM REARS, 24' LONG X 8' WIDE



STEEL FARM WAGON, TANDEM REARS, 24' LONG X 8' WIDE, SIDES FOLD DOWN, 1 REAR WHEEL IS OFF, HUB IS BAD

Lot #232A (Sale Order 232 of 301)

STEEL FARM WAGON, TANDEM REARS, 24' LONG X 8' WIDE, SIDES FOLD DOWN, 1 REAR WHEEL IS OFF, HUB IS BAD



STEEL FARM WAGON, TANDEM REARS, 24' LONG X 8' WIDE, SIDES FOLD DOWN, 1 REAR WHEEL IS OFF

Lot #232B (Sale Order 232 of 301)

STEEL FARM WAGON, TANDEM REARS, 24' LONG X 8' WIDE, SIDES FOLD DOWN, 1 REAR WHEEL IS OFF



STEEL FARM WAGON, TANDEM REARS, 24' LONG X 8' WIDE, SIDES FOLD DOWN, HAS BAD WHEEL BEARING OR HUB, F

Lot #232C (Sale Order 232 of 301)

STEEL FARM WAGON, TANDEM REARS, 24' LONG X 8' WIDE, SIDES FOLD DOWN, HAS BAD WHEEL BEARING OR HUB, FRONT LEFT AXLE HAS LOOSE WHEEL



WOODEN FARM WAGON, PIN STYLE HITCH

Lot #233 (Sale Order 233 of 301)

WOODEN FARM WAGON, PIN STYLE HITCH



WOODEN WAGON

Lot #233A (Sale Order 233 of 301)

WOODEN WAGON



WOODEN WAGON

Lot #233B (Sale Order 233 of 301)

WOODEN WAGON



WOODEN WAGON

Lot #234 (Sale Order 234 of 301)

WOODEN WAGON



WOODEN WAGON

Lot #235 (Sale Order 235 of 301)

WOODEN WAGON



WOODEN WAGON

Lot #236 (Sale Order 236 of 301)

WOODEN WAGON



WOODEN WAGON

Lot #237 (Sale Order 237 of 301)

WOODEN WAGON



WOODEN WAGON

Lot #238 (Sale Order 238 of 301)

WOODEN WAGON



WOODEN WAGON, HAS FLAT TIRE

Lot #239 (Sale Order 239 of 301)

WOODEN WAGON, HAS FLAT TIRE



WOODEN WAGON

Lot #240 (Sale Order 240 of 301)

WOODEN WAGON



WOODEN WAGON, HAS FLAT TIRE

Lot #241 (Sale Order 241 of 301)

WOODEN WAGON, HAS FLAT TIRE



WOODEN WAGON

Lot #242 (Sale Order 242 of 301)

WOODEN WAGON



WOODEN WAGON

Lot #243 (Sale Order 243 of 301)

WOODEN WAGON



WOODEN WAGON

Lot #244 (Sale Order 244 of 301)

WOODEN WAGON



WOODEN WAGON, HAS FLAT TIRES, WOOD IS BROKEN

Lot #245 (Sale Order 245 of 301)

WOODEN WAGON, HAS FLAT TIRES, WOOD IS BROKEN



WOODEN WAGON, MISSING FRONT TIRE

Lot #246 (Sale Order 246 of 301)

WOODEN WAGON, MISSING FRONT TIRE



WOODEN WAGON, HAS FLAT TIRES

Lot #247 (Sale Order 247 of 301)

WOODEN WAGON, HAS FLAT TIRES