



INDUSTRIAL ASSETS

REAL ESTATE • FINANCE • MACHINERY • AUCTIONS
industrialassets.com

**3-DAY
LIVE ON-SITE &
GLOBAL WEBCAST**

AUCTION

DAY 1

Wednesday, April 13th at 9:00am (CDT)

ASSET/PREVIEW LOCATIONS:

2 Genstar Ln., Joliet, IL 60435
1420 S. Walnut St., South Bend, IN 46619

DAY 2

Thursday, April 14th at 9:00am (CDT)

ASSET/PREVIEW LOCATION:

13500 South Mozart Street,
Blue Island, IL 60406

DAY 3

Friday, April 15th at 9:00am (CDT)

ASSET/PREVIEW LOCATIONS:

3357 S. Justine St., Chicago, IL 60608
1450 West Bartlett Rd., Elgin, IL 60120

THEATER-STYLE AUCTION: To be held at Chicago Marriott Midway Hotel, 6520 S Cicero Ave, Chicago, IL 60638
PREVIEW: Monday & Tuesday, April 11th & 12th, from 9:00am to 4:00pm Each Day or By Appointment

OVER 5,000 LOTS!

PURE
METAL RECYCLING

**\$60 MILLION IN
REPLACEMENT VALUE!**

ONE OF THE LARGEST EVER METAL RECYCLING AUCTIONS



**(45) Material
Handling Excavators
Late as 2010**

View of Material Handling Excavators w/Grapples, Magnets & Shears



**(7) Balers
Late as 2004**

Sierra Shear Baler



**Over 2,500
Available**

Roll-Off / Lugger/ Pallet Bins

Online Bidding Available, Visit www.biditup.com for Complete Registration Information

BIDITUP
BIDITUP AUCTIONS WORLDWIDE
AN INDUSTRIAL ASSETS COMPANY

818.508.7034
www.biditup.com

Maynards
SINCE 1902

248.569.9781
www.maynards.com

Complete
Photos &
Lot Listings at
biditup.com

(45) MATERIAL HANDLING EXCAVATORS

- (3) 2010 CAT 330-DMH MATERIAL HANDLERS, w/Magnet
- (2) 2009 LIEBHERR R944C-EW MATERIAL HANDLERS, w/Grapple or Magnet Attachments
- 2009 LIEBHERR R934C-EW MATERIAL HANDLER, w/Magnet
- (2) 2007 CAT 330DMH MATERIAL HANDLERS, w/Magnet
- 2006 CAT 330BL MATERIAL HANDLER, w/Grapple
- 2005 CAT 330C MATERIAL HANDLER, w/Magnet
- (4) 2004 CAT 330CL MATERIAL HANDLERS, w/Shear
- (2) 2005 CAT 325CL MATERIAL HANDLERS, w/Shear
- 2005 CAT 330CL MATERIAL HANDLER, w/Demo Grapple
- 2006 KOMATSU PC200LC-7 HYD. EXCAVATOR, w/Shear
- 2005 HITACHI ZX450LC HYD. EXCAVATOR, w/Shear

- 2004 LIEBHERR 934 MATERIAL HANDLER, w/Shear
- (2) 2004 CAT 330C MATERIAL HANDLERS, w/Magnet & Scale
- 2005 CAT 345CMH MATERIAL HANDLER, w/Magnet
- 2000 CAT 330BL MATERIAL HANDLER, w/Grapple
- 2001 LIEBHERR 954 MATERIAL HANDLER, w/Grapple
- 1999 CAT 345B MATERIAL HANDLER, w/Grapple
- 1998 CAT 345C MATERIAL HANDLER, w/Magnet
- (2) 1999 CAT 330BL MATERIAL HANDLERS, w/Shear
- 1998 CAT 330C MATERIAL HANDLER, w/Grapple
- 2003 CAT 330C MATERIAL HANDLER, w/Magnet
- 1998 CAT 345B MATERIAL HANDLER, w/Magnet
- 1996 CAT 350L MATERIAL HANDLER, w/Magnet

- 2002 CAT 330CL MATERIAL HANDLER, w/Shear
- 1991 KOEHRING 6644 MATERIAL HANDLER, w/Shear
- 1998 CAT 320M MATERIAL HANDLER, w/Grapple
- 1998 CAT 350L MATERIAL HANDLER, w/Grapple
- 1995 LIEBHERR A922 MATERIAL HANDLER, w/Grapple
- 1995 CAT 320L MATERIAL HANDLER, w/Demo Grapple
- 1986 LIEBHERR 932 MATERIAL HANDLER, w/Grapple
- 1995 KOEHRING 6644 MATERIAL HANDLER, w/Grapple
- 1997 CAT 330L MATERIAL HANDLER, w/Grapple
- 1992 KOEHRING 6644 MATERIAL HANDLER, w/Magnet
- 1995 CAT 325L MATERIAL HANDLER, w/Demo Grapple
- 1999 CAT 325B MATERIAL HANDLER, w/Magnet



Liebherr 934 w/Shear



CAT 330D Material Handling Excavator

**(45) Material
Handling Excavators
Late as 2010**



Komatsu DL 200 w/Shear



View of Material Handling Excavators w/Grapples, Magnets & Shears

RUBBER TIRED LOADERS

- 2008 CAT 930H WHEEL LOADER
- (2) 2009 CAT 904B WHEEL LOADERS
- (4) 2001-1991 CAT 980G WHEEL LOADERS
- 1995 KOMATSU WA500 WHEEL LOADER
- 1998 CAT 933B WHEEL LOADER
- 1998 CASE 580 SUPER L WHEEL LOADER

SKID STEER LOADERS

- (6) 2007-2005 CAT 268B SKID STEER LOADERS
- 1994 CASE 1845C SKID STEER LOADER
- (5) 1992 CAT 252B SKID STEER LOADER
- 1994 BOBCAT 773 SKID STEER LOADER



2008 CAT 930H Wheel Loader



(13) Skid Steer Loaders Available

TO SCHEDULE AN AUCTION OR APPRAISAL CALL 818.508.7034

**(7) Balers
Late as 2004**



Harris TG 229 Baler



Sierra Shear Baler



Wood Processing Chipper



**(2)
Available**

Cut-to-Length Lines



Woton Boring Mill

PROCESSING EQUIPMENT

- 2008 GRANUTECH SATURN 96-50 400-HP DUAL SHAFT SHREDDER, w/Cutter Dia. 26.5", Shaft Speed 22.8 Slow Shaft, 43.1 Fast Shaft, (2) 200-HP Hyd. Power units, Controls
- 1975 HARRIS TG-2229 2,400-PSI HYD. TRIPLE COMPRESSION HORIZONTAL BALER, w/300-HP Hyd. Power Supply, 305-Ton Pre-Compression, 848-Ton Second and Third Compression, 24" x 24" Bale Size, 48-Bale/Hour Max. Cap., 777-Cu. Ft. Press Box Volume, (6) Hydraulic Pumps 3,200-PSI, (6) Hydraulic Pumps 2,200-PSI, Hydraulic System, Control House, Support Equipment
- 2004 SIERRA IDROMEC 500SL TRANSPORTABLE HORIZ. HYD. BALER, w/Shear and Logger, 12 to 16-Tons/Hour Shearing Cap., 10 to 13-Tons/Hour Baling Capacity, 14 to 16-Tons/Hour Logging Cap., 500-Ton Shear Cap., 100-Ton Pre-Compression, 163-Ton Main Compression, 210-Ton Folding Box Each Side 32" x 26" Bale Size, Hyd. Power Supply, Control House, Electrical Controls
- 1977 SIERRA HYDRAULIC HORIZONTAL BALER
- (2) 2002-1995 MAC 5200 380-TON HORIZONTAL HYDRAULIC BALER, 380-Ton Shear Capacity, 170-Ton Compression, 16" x 16" Bale Size, w/Mayfran 60" x 20' Elevated Feed Conveyor, Support Equipment
- 1973 GALLAND-HENNING 3800FM SERIES FM-3 309-TON HYDRAULIC TRIPLE COMPRESSION HORIZONTAL BALER, 48-Bales/Hour Max. Cap., 309-Ton First Compression Cylinders, 727-Ton Second and Third Compression Cylinders, w/24" x 80" x 60" Charging Box, 24" x 24" Bale Size, Hyd. Power Supply, Electrical Controls
- 1980'S UNDEFINED MAKE DJ 750-HP HYD. BALER, 36" x 36" x Variable Bale Size
- (2) HUSTLER MONEY MAKER FERROUS METAL CHIP SEPARATOR, w/4' x 10' Vibratory Feed Conveyor, 18" Magnetic Belt Separator Conveyor, Electrical Controls

CUT-TO-LENGTH LINES

- P.A.S. 50,000-LB. X 72"W X .135" SLITTING / CUT-TO-LENGTH LINE, w/Traversing Coil Buggy, PAS Model 2116, 72" x 50,000-Lb. Expanding Uncoiler, S/N 66423, 72" Feeder Table, S/N 69603, PAS Model 7-472, Precision Leveller, S/N 69602, Pinch Rolls, Cincinnati .135" x 72"L Mechanical Shear, S/N HSS1021, 65" x 135" Roller Conveyor, Reeves .036"-.186" Slitting Head, Platforms, Controls, Etc.
- 1980 STAMCO 50,000-LB. X 72"W X .125" SLITTING / .250" CUT-TO-LENGTH LINE, w/Traversing Coil Buggy, Double Cone Uncoiler with Hold Down Arm, 72" x 118" Peeler Table w/Hydraulic Elevation, Mesta Precision Leveller, Hump Table, Pinch Rolls, Niagara 3/16" x 8"L Mechanical Shear, Bradbury Model 8-72, .025"-.125" Slitting Head, S/N 9064-A (New 1990), Air Compressor, Air Dryer, Platforms, Controls, Etc.

RECYCLING BINS

- (350) 50, 40 AND 30-YARD ROLL-OFF BOXES
- (1,500) 1/2-YARD TO 1-1/2-YARD HOPPERS AND PALLET BOXES
- (500) 10-30 YARD LUGGER BOXES

MACHINE / FABRICATION SHOPS

- WHITING 25-TON. X 120' SPAN DOUBLE GIRDER OVERHEAD BRIDGE CRANE, w/Radio Control, Trans-Weight 50,000-Lb. Digital Scale, C-Hook
- 1969 WOTAN B130L 5" TABLE TYPE HORIZ. BORING MILL, w/35" Spindle Travel, (33) Spindle Speeds 2.5-1000 RPM, 108" Table Cross Travel, 75" Long Travel, 70" Headstock Vertical Travel, 60" x 120" T-Slotted Table, 3-Axis Digital Readout, Angle Plates
- HYDRAULIC CYLINDER BREAK-DOWN AND ASSEMBLY MACHINE, w/"Nut Buster" Head, 1-Ton Electric Hoist Mounted on 360-Degree Floor Mounted Jib Crane, Self Contained Hyd. Power Supply, Electrical Push-Button Control Station
- 1920'S AMERICAN 30" X 120" GEARED HEAD ENGINE LATHE, w/6 to 260-RPM, Threading, Compound Cross-Slide, Live Center Tailstock, Taper Attachment, Steady Rest, 24" 4-Jaw Chuck
- 1943 CINCINNATI GILBERT 4' X 11" RADIAL DRILL, (2) Power Elevation, Power Clamp, Spindle Speeds from 34 to 1,200-RPM, Box Table, 12" Vise, Manual
- 1942 CINCINNATI 2 HORIZ. KNEE TYPE MILL, w/10" x 50" T-Slotted Table
- BAIRD APPROX. 24" X 72" ENGINE LATHE, w/Tool Post, Tailstock, Steady Rest
- HENDLEY 16" X 54" GEARED HEAD ENGINE LATHE, w/16" 4-Jaw Chuck, Compound Cross Slide, Threading, Taper, Steady Rest
- 2008 ACER DYNAMIC 1760G 17"/26" X 60" GAP ENGINE LATHE, w/7.5-HP, Spindle Hole 2-1/4", Steady Rest, 4-Way Tool Post, Digital Readout
- CLAUSING APPROX. 10" X 36" ENGINE LATHE, W/10" 3-JAW CHUCK
- LEVISCO 339, 30-TON HYDRAULIC H-FRAME SHOP PRESS
- 1981 BRIDGEPORT I 2-HP VERT. MILL, w/9" x 42" T-Slotted Table, Vise, Power Cross
- JET 414478 10" X 16" HORIZ. BAND SAW
- 1973 CINCINNATI 1810 1/4" X 10' MECHANICAL SHEAR, w/Auto Shear Back Gauge, Arm Support, Foot Control, 1-Ton x 12' long 360A Jig Crane with Chain Hoist



Roll-Off / Lugger / Pallet Bins

**Over 2,500
Available**

Register at www.BIDITUP.com and receive auction updates via email

ROLL-OFF TRUCKS

- (2) 2013 MACK GU713 ROLL-OFF TRUCKS
- (8) 2013-2008 MACK CXU613 ROLL-OFF TRUCKS
- (3) 2012-2009 MACK GU813 ROLL-OFF TRUCKS
- (5) 2007 MACK CV713 ROLL-OFF TRUCKS
- (4) 2007-2006 MACK CXN613 ROLL-OFF TRUCK
- (7) 2006-2004 MACK CV713 ROLL-OFF TRUCKS
- (7) 2003-1996 MACK CH613 ROLL-OFF TRUCKS
- (6) 2003-1994 MACK CH600 ROLL-OFF TRUCKS
- 2000 KENWORTH T800 ROLL-OFF TRUCK
- 1997 PETERBILT CON 378 ROLL-OFF TRUCK
- 1994 MACK RD688S ROLL-OFF TRUCK
- 1989 MACK DM600 ROLL-OFF TRUCK

LUGGER TRUCKS

- (6) 2012-2011 MACK GU713 LUGGER TRUCKS
- (2) 2007 MACK CT713 LUGGER TRUCKS
- (4) 2001-1995 MACK DM690 LUGGER TRUCKS
- (2) 2000 MACK CH600 LUGGER TRUCKS
- 2000 FREIGHTLINER MED CNVNT LUGGER TRUCK
- (2) 1996-1990 MACK CH613 LUGGER TRUCKS
- (4) 1996-1990 MACK R600 LUGGER TRUCKS
- 1995 FORD L9000 LUGGER TRUCK

TRUCK TRACTORS

- (6) 2009-2008 MACK CXU613 TRUCK TRACTORS
- (4) 2007-2006 MACK CXN613 TRUCK TRACTORS
- (4) 2003-1996 MACK CH600 TRUCK TRACTORS
- (4) 2003-2000 MACK CH613 TRUCK TRACTORS
- 1997 MACK RD690 TRUCK TRACTOR
- (3) 1994-1989 MACK R600 TRUCK TRACTORS
- 1994 PETERBILT 377 TRUCK TRACTOR
- 1994 INTERNATIONAL 9400 TRUCK TRACTOR
- 1991 MACK CH613 TRUCK TRACTOR
- 1989 VOLVO TRUCK TRACTOR

DUMP / WATER / BOX TRUCKS

- (2) 2008 MACK CXU613 DUMP TRUCKS
- (5) 2007-2005 MACK CXN613 DUMP TRUCKS
- (3) 2005-2004 MACK CX613 DUMP TRUCKS
- (2) 2003 MACK CV713 DUMP TRUCKS
- 2000 GMC T-SERIES BOX TRUCK
- 2000 STERLING AT9500 BOX TRUCK
- (4) 1999-1994 MACK CH613 DUMP TRUCKS
- 1998 FORD AEROMAX 9500 BOX TRUCK
- 1995 MACK RD688S DUMP TRUCK
- 1984 FORD W805 WATER TRUCK
- 1980 MACK R600 WATER TRUCK

SERVICE / MISC. TRUCKS

- 2006 STERLING ACTERRA SERVICE TRUCK TRACTOR
- 2005 CHEVY 2500 SERVICE PICKUP TRUCK
- 2003 GMC CC7500 SERVICE TRUCK TRACTOR
- (2) 2004 FORD F450 SERVICE PICKUP TRUCK
- (2) 2002 FORD F550 SERVICE PICKUP TRUCK
- 1998 OTTAWA 30 YARD SPOTTER 77052
- 1996 CAPACITY SPOTTER YARD SPOTTER

PICKUP TRUCKS

- (2) 2009-1998 CHEVY 1500 PICKUP TRUCKS
- (3) 2008-1993 FORD F250 PICKUP TRUCKS
- (2) 2006-2002 FORD F150 PICKUP TRUCKS
- (2) 1993 GMC SIERRA PICKUP TRUCKS
- 1995 FORD F450 PICKUP TRUCK
- 1997 DODGE 2500 PICKUP TRUCK
- (2) 1999-1997 DODGE 1500 PICKUP TRUCKS
- 2000 FORD F550 PICKUP TRUCK
- 2001 CHEVY 2500 PICKUP TRUCK
- 2001 FORD F450 PICKUP TRUCK

SWEEPER TRUCK

- 2000 ELGIN PELICAN SWEEPER TRUCK



Late as 2013

Mack Roll-Off Truck



Late as 2012

Mack Lugger Trucks



Mack Truck Tractor / Gondola Trailer



Late as 2009

Mack Truck Tractors



Late as 2010

Pickup Trucks



Late as 2012

Mack Lugger Trucks



Late as 2006

Service Trucks

TO SCHEDULE AN AUCTION OR APPRAISAL CALL 818.508.7034

TRAILERS

- (25) 2013-1976 GALBREATH, ACE, HEIL & BENLEE DEAD LIFT ROLL-OFF TRAILERS
- (12) 2008-1985 BENLEE, ACE & GALBREATH STINGER ROLL-OFF TRAILERS
- (21) 2014-1986 CLEMENT, DIERZEN, CORAS, SUPERIOR & DORSEY DUMP TRAILERS
- (58) 2002-1940 TRAILMOBILE, FRUEHAUF & GREAT DANE GONDOLA TRAILERS
- (17) 1993-1946 TRAILMOBILE, FRUEHAUF, GREAT DANE & FONTAINE HIGH SIDE GONDOLA TRAILERS
- (10) 2000-1973 DORSEY, LOAD KING, FONTAINE & FRUEHAUF FLAT BED TRAILERS
- (19) 2000-1962 WABASH, MONON & TRAILMOBILE DRY VAN TRAILERS
- 6' X 8' OFFICE TRAILER

TRUCK SCALES

- (2) RICE LAKE SURVIVOR EZ7011-ST 120,000-LB. TRUCK SCALES
- (2) RICE LAKE SURVIVOR OTR 100,000-LB. TRUCK SCALES
- RICE LAKE SURVIVOR OTR 100,000-LB. TRUCK SCALE
- WEIGHTRONIX BMS7011-100T 100,000-LB. TRUCK SCALE
- RICE LAKE 120,000-LB. STEEL BASE TRUCK SCALE
- TOLEDO 100,000-LB. TRUCK SCALE

FORKLIFTS

- RICO PEGASUS 500 50,000-LB. CAPACITY DIESEL FORKLIFT
- 1980 KALMAR DCD-180-6 40,000-LB. CAPACITY DIESEL FORKLIFT
- 2008 TCM FG36 8,000-LB. CAPACITY LPG FORKLIFT, w/Rotator Attachment
- 1989 CAT DP40 8,000-LB. CAPACITY DIESEL FORKLIFT
- (2) 2008-2006 TUSK 600PGH-16 6,000-LB. CAP. LPG FORKLIFTS, w/Rotator Attachment
- (7) 2008-1997 KOMATSU FG30HT-16 6,000-LB. CAPACITY LPG FORKLIFTS
- 2006 TUSK 600-PGH-16 6,000-LB. CAPACITY LPG FORKLIFT, w/Rotator Attachment
- 2005 KOMATSU FG30HT-14 6,000-LB. CAPACITY LPG FORKLIFT, w/Rotator Attachment
- 2002 TOYOTA 02-6FGU30 6,000-LB. CAPACITY LPG FORKLIFT
- 1998 CAT DP30 6,000-LB. CAPACITY DIESEL FORKLIFT
- 1998 CAT GC30 6,000-LB. CAPACITY LPG FORKLIFT
- 1980 CASE 585D 6,000-LB. CAPACITY DIESEL FORKLIFT
- 1987 TCM FCG25NGT 5,000-LB. CAP. LPG FORKLIFT

MISCELLANEOUS SUPPORT EQUIPMENT

- Portable Shop Carts, Battery Chargers, Pallet Jacks, Oxy-Acetylene Torch Carts, Grinders, Welding Supplies, Safety Ladders, Steel Saw Horses, Fans, Vises, Hand Carts, Chop Saws, Welders, Work Benches, Oil Storage Tanks, Parts Washers, Space Heaters, Gang Boxes, Heaters, Shelving, Parts Bins, Hand and Power Tools, Chains, Grinders, Motors, Storage Cabinets, Light Plants, Hose Crimpers, Dollies, Air Compressors, Storage Containers, Lube Trailer, Pressure Hose Machine, Storage Trailers, Welding Power Sources, Etc.



Flatdeck Trailers



Van Trailers

**(163) Trailers
Late as 2014**



End Dump Trailers



Roll-Off Trailers



Rico Pegasus 500 50,000-Lb. Cap. Forklift



Tusk 600-PGH-16 6,000-Lb. LPG Forklift

**(20) Forklifts
Late as 2008**



**(10)
Available**

Load Beam Scales

ONSITE BIDDER INSTRUCTIONS: \$500 cash minimum registration deposit or 25% of approximately bid amount (whichever is greater) via wire transfer ACH, cashier's check or bank letter to - Blank Signed Company Check (To be returned once final payment is received). Please refer to www.biditup.com for complete registration information.

ONLINE BIDDER INSTRUCTIONS: All internet bidders must register for this auction at least 72-hours prior to the sale date, if you do not you will not be approved. All internet bidders must provide a wire transfer deposit of approximately 25% of your planned spending amount or \$2,500 minimum, whichever is greater in order to be approved to bid. Those who do not post the deposit will not be approved. Period. Please refer to www.biditup.com for online bidder terms.

3-DAY Live On-Site & Webcast AUCTION

DAY 1: Wed., April 13 at 9am CDT

DAY 2: Thurs., April 14 at 9am CDT

DAY 3: Friday, April 15 at 9am CDT

THEATER-STYLE AUCTION: To be Conducted from a Hotel in Chicago, Check Website for Details

PURE
METAL RECYCLING

ONE OF THE LARGEST EVER
METAL RECYCLING AUCTIONS

Over 5,000 Lots!
\$60 Million in
Replacement Value!



**(45)
Available**

Material Handling Excavators



2009 CAT 940H Wheel Loader



Mack Truck Tractors to 2009



(20) Forklifts Available

BIDITUP

BIDITUP AUCTIONS WORLDWIDE
AN INDUSTRIAL ASSETS COMPANY

11426 Ventura Boulevard
Studio City, California 91604
Phone: 818.508.7034
Fax: 818.508.3025
info@biditup.com

IN License #AU19700033
IL License #441001934



SCAN QR CODE
TO SEE ALL INFORMATION
ABOUT THIS AUCTION!

MACHINERY AUCTION, LOOK INSIDE!

**ATTENTION: PLANT MANAGER
OR EQUIPMENT BUYER**



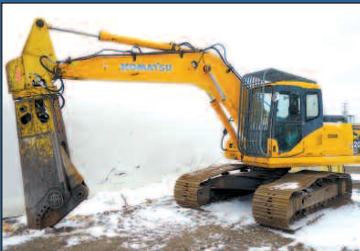
3-DAY ON-SITE & WEBCAST AUCTION

OVER 5,000 LOTS!

PURE
METAL RECYCLING

\$60 MILLION IN
REPLACEMENT VALUE!

ONE OF THE LARGEST EVER METAL RECYCLING AUCTIONS



Komatsu DL 200 w/Shear



Harris TG 229 Baler



Mack Roll-Off Truck to 2013



End Dump Trailers to 2012

DIRECTIONS TO THEATER-STYLE AUCTION

FROM MIDWAY INTERNATIONAL AIRPORT TO CHICAGO MARRIOTT MIDWAY HOTEL, 6520 SO. CICERO AVE, CHICAGO, IL 60638
Head north on Departures. Slight left toward S Cicero Ave. Use any lane to turn left onto S Cicero Ave. Destination will be on the right.

LODGING FOR JOLIET, IL
QUALITY INN & SUITES
(815) 744-1770
135 S Larkin Avenue
Joliet, IL 60436

LODGING FOR SOUTH BEND, IL
DOUBLETREE BY HILTON HOTEL
(574) 234-2000
123 N St Joseph Street
South Bend, IN 46601

LODGING FOR BLUE ISLAND, IL
DOUBLETREE BY HILTON HOTEL
(708) 371-7300
5000 W 127th Street
Alsip, IL 60803

LODGING FOR CHICAGO, IL
HOLIDAY INN AND SUITES
(312) 278-3129
506 W Harrison Street
Chicago, IL 60607

LODGING FOR ELGIN, IL
HILTON GARDEN INN
(630) 584-0700
4070 East Main Street
St. Charles, IL 60174

FOR THE COMPLETE TERMS & CONDITIONS OF THE FEATURED AUCTION
Please visit our website www.BIDITUP.com

Thinking of having an auction or need an appraisal?
Call us at 818.508.7034