



# INDUSTRIAL ASSETS

REAL ESTATE • FINANCE • MACHINERY • AUCTIONS  
industrialassets.com

**4-DAY LIVE ON-SITE & WEBCAST THEATER STYLE  
1-DAY ONLINE ONLY (Inspection & Test Equipment)**

# AUCTION

**4-DAY LIVE ON-SITE & WEBCAST THEATRE STYLE AUCTION:**

Tuesday, October 18th thru Friday, October 21st at 9:00am (CT) Daily

**1-DAY ONLINE ONLY AUCTION CLOSSES (Inspection & Test Equipment):**

Thursday, October 27th at 10:00am (ET)

**LOCATION:** 100 N. Mitsubishi Mtwy, Normal, IL 61761

**PREVIEW:** Monday, October 10th thru Monday, October 17th, 9:00am to 4:00pm Each Weekday

For More Information, Call 818.508.7034 or go to [www.biditup.com](http://www.biditup.com)

**OVER  
10,000 LOTS  
To Be Sold!**

## COMPLETE AUTOMOTIVE MANUFACTURING FACILITY

**FEATURING:** Over 10,000 Lots of Metal Stamping, Plastics, Paint, Robotic Assembly, Tire Assembly, Machine Tools, Inspection, Test, Overhead Cranes, Mobile Equipment & More



Complete Photos & Lot Listings at [www.biditup.com](http://www.biditup.com)



**BIDITUP**

BIDITUP AUCTIONS WORLDWIDE  
AN INDUSTRIAL ASSETS COMPANY

818.508.7034  
[www.biditup.com](http://www.biditup.com)

**Maynards**  
SINCE 1902

248.569.9781  
[www.maynards.com](http://www.maynards.com)

# INDUSTRIAL REAL ESTATE WITH RAILROAD SPURS AND FARMLAND FOR SALE AT AUCTION

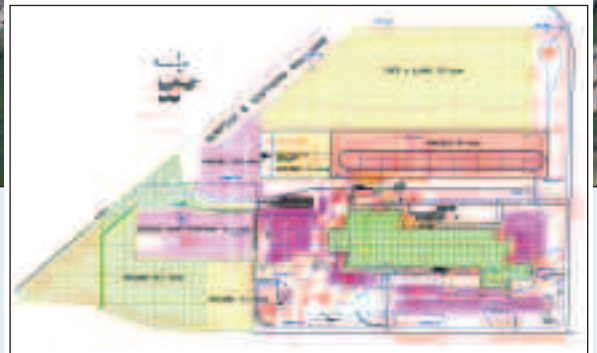
**TUESDAY, OCTOBER 18<sup>TH</sup>, 2016 AT 9:00AM (CT)**

100 N. Mitsubishi Mtwy, Normal, IL 61761

**2,400,000 SQ.FT. MANUFACTURING/OPERATIONS FACILITY OF MITSUBISHI MOTORS NO. AMERICA, INC.**

**TO BE OFFERED IN ITS ENTIRETY FARM LAND LOTS AND BUILDINGS TO SUIT INDIVIDUAL BUYERS**

**REAL ESTATE  
TO BE SOLD  
AS FIRST LOT**



**LOT 1:** Entirety of All Buildings Including 2,400,000 Sq.Ft. Main Plant & Land +/- 550 Acres

**LOT 2:** 2,400,000 Sq.Ft. of Building with Ample Parking

**LOT 3:** Individual Farm Land and Parcels

**LOT 4:** Individual Auxiliary Buildings, Land and Rail Spur

*This Above are Preliminary Descriptions and Final Lots to be Announced at Time of Sale*

## FEATURES:

- 2,400,000 Square Foot Facility
- +/- 550 Acre Lot
- Corporate Office Suites
- Vehicle Test Track
- Paint Facility
- Vehicle Storage
- Rail Road Spurs

## BENEFITS:

- State & City Incentives Available
- Existing Rail Service
- Massive Vehicle Storage
- Industrial Uses Approved
- Non-Union Facility
- Efficient Facility
- Full Manufacturing Facility

## EQUIPMENT HIGHLIGHTS:

- Over 30 Million Dollars' Worth of Equipment Available
- Over 600 Robots Available
- Stamping Presses
- Injection Molders
- Assembly Lines
- Finishing Lines & Much More...

*See Website for Data Room with Surveys, Permits, Plot Maps and Pertinent Information Including who to Contact for City and State Incentives.*



**TERMS:** Real Estate to be Sold As-Is. Cashier's Checks or Wire Transfers Only for Deposits to Bid on Real-Estate. **No Deposit - No Bidding.** Deposit to Bid on Entirety: \$500k. Deposits to Bid on Land Parcels Only: \$100k. Deposits to Bid on Land Parcels with Buildings: \$250k. **NO MINIMUM OR RESERVE**

# TIRE MOUNTING EQUIPMENT

**The Tire Mounting Equipment is Located at Column CC73 in the South Expansion.  
The Equipment Consists of (6) Sub-Assembly Stations and Conveyor Integrated Into  
a Turn-Key Assembly Line for the Complete Tire/Wheel Mounting Process.**

- STATION 1 - (2) WHEEL STEMMERS: Dominion Tool & Die Co., Inc., (Roseville, MI)
- STATION 2 - TIRE MOUNTER: Schenck Motorama Production Systems, (Farmington, MI)
- STATION 3 - TIRE INFLATOR: Schenck Motorama Production Systems, (Farmington, MI)
- STATION 4 - LOAD SIMULATOR: Dominion Tool & Die Co., Inc., (Roseville, MI)
- STATION 5 - (2) BALANCERS: ITW Micro-Poise, (Akron, OH)
- STATION 6 - STACKER: Ultimition Inc., (Roseville, MI)
- MANUALS, DRAWINGS & SOFTWARE
- SPARE PARTS

**OVER  
\$3.5 MILLION  
REPLACEMENT COST**



ASSEMBLY LINE OVERVIEW



2 Available

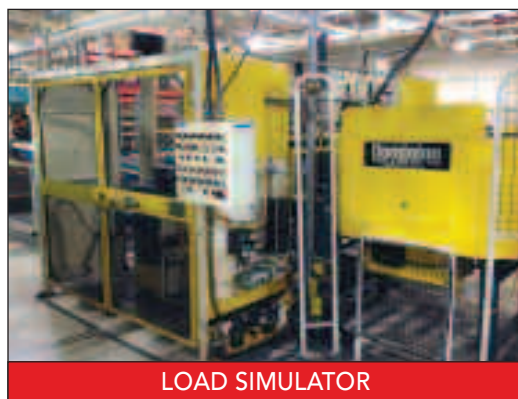
WHEEL STEMMER



TIRE MOUNTER



TIRE INFLATOR



LOAD SIMULATOR



2 Available

BALANCER



STACKER



DOCUMENTATION



SPARE PARTS

# STAMPING

## TRANSFER PRESSES

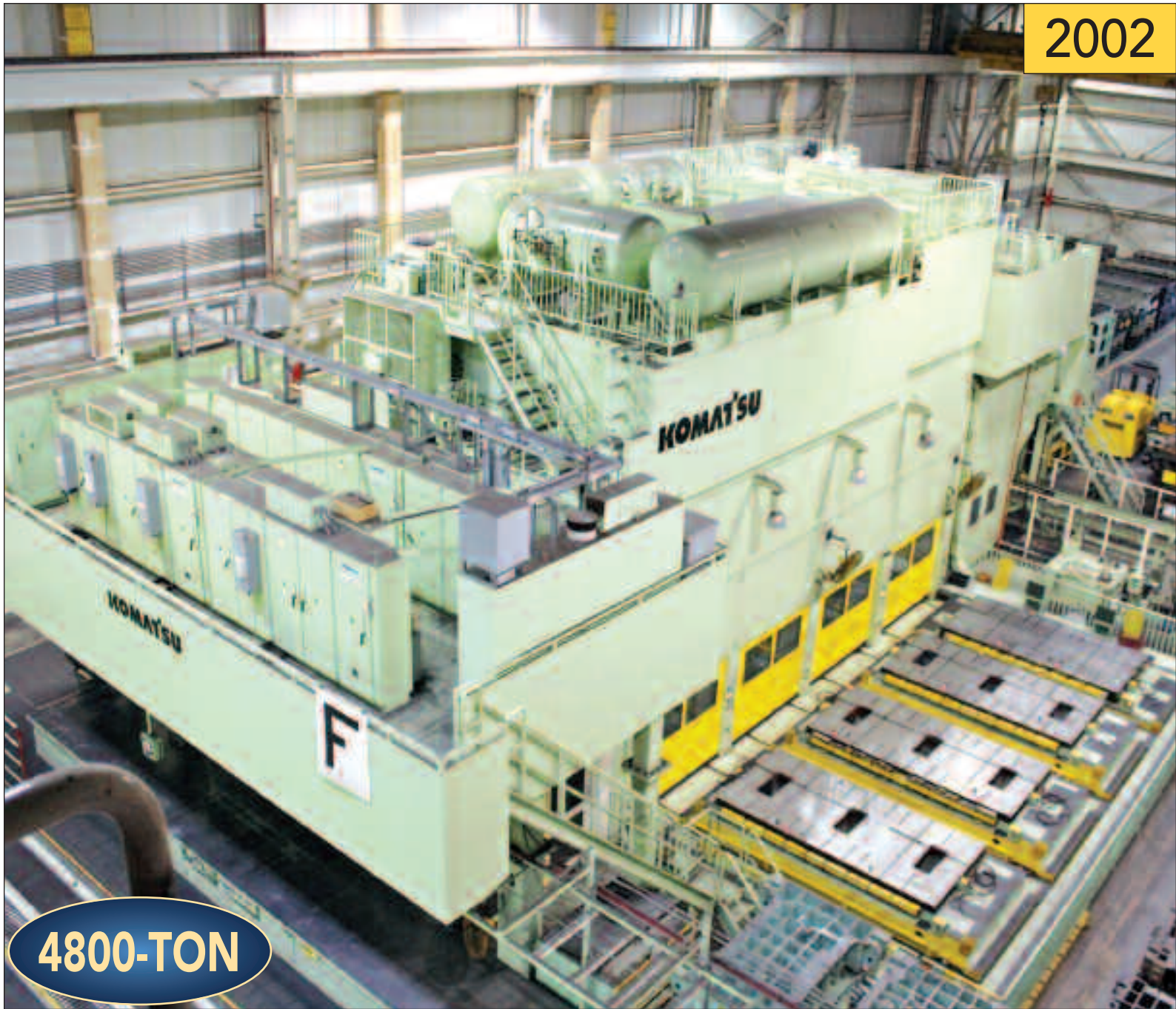
- **KOMATSU L1E3-16M4800-40-330-MF, (2002) TONNAGE: 4800 METRIC TONS**, Each Station; W1: 2400 Ton, W2: 800 Ton, W3: 800 Ton, W4: 800 Ton, Slide Stroke: No.1 13500mm, No.2-4 1200mm, Slide Adjustment: No.1 350mm, No.2-4 250mm, Die Height: No.1 1350mm, No.2-4 1150mm, Number of Slide Strokes 6-15min, 4 Stations, Height of Cross Bar: No.1-4 900-1100mm, Slide Dimensions: No.1 2325x4600mm, No.2-4 2200x4600mm, Bolster Dimensions: No.1 2325x4600x330mm, No.2-4 2200x4600x150mm, Cap. of Balancer: Each Slide 20 Ton, Height of Bolster: No.1 750mm, No.2-4 1000mm, Main Motor: 500Kw D.C., Suction Cup Feed, Feed Length 3300mm
- **KOMATSU E8T3500-06-200-MF, (1987) TONNAGE: 3500 METRIC TONS**, Max Cap. Section #1: 2300 Metric Tons, Section #2: 1200 Metric Tons, Slide Stroke: 1000mm, Slide Adjustment: 150mm, Strokes Per Minute: 6 & 8-16 SPM, Die Height: 1350mm, Slide Area (R-L x F-B): No.1 Section 6000x3500mm, No.2 Section 6000x3500mm, Bolster Area (R-L x F-B) No.1 Section 6000x3500mm, No.2 Section 6000x3500mm, Bolster Thickness: 280mm, Height Floor to Top Face of Bolster 810mm, Height Floor to Top Face of Bed 10mm, Balancer Capacity: No.1 Section 45 Metric Tons, No.2 Section 45 Metric Tons, Carrier Capacity, No.1 80 Metric Tons, No.2 80 Metric Tons, Main Motor: DC 315 kw (422-HP), Transfer Feeder: Feed Height: 825mm, Feed Stroke: 2000mm, Clamp Stroke: 550mm, Lift Stroke: 300mm
- **KOMATSU E8T3000-05-200-MF, (1987), TONNAGE: 3000 METRIC TONS**, Max Cap. Section #1: 1950 Metric Tons, Section #2: 1050 Metric Tons, Slide Stroke: 1000mm, Slide Adjustment: 150mm, Strokes Per Minute: 6 & 8-16 SPM, Die Height: 1350mm, Slide Area (R-L x F-B): No.1 Section 4000x3000mm, No.2 Section 6000x3000mm, Bolster Area (R-L x F-B) No.1 Section 4000x3000mm, No.2 Section 6000x3000mm, Bolster Thickness: 280mm, Height Floor to Top Face of Bolster 810mm, Height Floor to Top Face of Bed 10mm, Balancer Capacity: No.1 Section 30 Metric Tons, No.2 Section 45 Metric Tons, Carrier Capacity, No.1 60 Metric Tons, No.2 80 Metric Tons, Main Motor: DC 280 kw (375-HP), Transfer Feeder: Feed Height: 825mm, Feed Stroke: 2000mm, Clamp Stroke: 550mm, Lift Stroke: 300mm
- **(2) KOMATSU E8T2700-05-200-MF, (1987) TONNAGE: 2700 METRIC TONS**, Max Cap. Section #1: 1800 Metric Tons, Section #2: 900 Metric Tons, Slide Stroke: 1000mm, Slide Adjustment: 150mm, Strokes Per Minute: 6 & 8-16 SPM, Die Height: 1350mm, Slide Area (R-L x F-B): No.1 Section 4000x2300mm, No.2 Section 6000x2300mm, Bolster Area (R-L x F-B) No.1 Section 4000x2300mm, No.2 Section 6000x2300mm, Bolster Thickness: 280mm, Height Floor to Top Face of Bolster 810mm, Height Floor to Top Face of Bed 10mm, Balancer Capacity: No.1 Section 25 Metric Tons, No.2 Section 36 Metric Tons, Carrier Capacity: No.1, 50 Metric Tons, No.2 70 Metric Tons, Main Motor: DC 280 kw (375-HP), Transfer Feeder: Feed Height: 825mm, Feed Stroke: 2000mm, Clamp Stroke: 550mm, Lift Stroke: 300mm
- **KOMATSU E4T1700-05-120-MF, (1987) TONNAGE: 1700 METRIC TONS**, Slide Stroke: 740mm, Slide Adjustment: 150mm, Strokes Per Minute: 6 & 10-20 SPM, Die Height: 1350mm, Slide Area (R-L x F-B) 6000x2300mm, Bolster Area (R-L x F-B) 6000x2300mm, Bolster Thickness: 280mm, Height from Floor to Top Face of Bolster: 700mm, Height from Floor to Top Face of Bed: 10mm, Balancer Capacity: 25 Metric Tons, Carrier Capacity: 50 Metric Ton, Main Motor: DC 200KW (268-HP), Transfer Feeder: Feed Height: 825mm, Feed Stroke: 1200mm, Clamp Stroke: 350mm, Lift Stroke: 200mm



KOMATSU E4T1700-05-120-MF

# STAMPING

2002



4800-TON

KOMATSU L1E3-16M4800-40-330-MF



1987

3500-TON

KOMATSU L1E3-16M4800-40-330-MF



1987

3000-TON

KOMATSU E8T3000-05-200-MF



1987

2700-TON

KOMATSU E8T2700-05-200-MF

2 Available

# STAMPING

## DIE SPOTTING PRESSES

- **AMINO PF1000-360-210, (1987), 1000-TON CAPACITY, 1400mm Stroke, 2200mm Daylight, (2) 3600mm x 2100mm Bolster Plates**
- **AMINO DSF050-360-210, (1987) 50-TON CAPACITY, 1700mm Stroke, 2100mm Daylight, 82" x 142" Bolster Plate**

**Large Quantity of Robotic Spot Welding & Welding Head Attachments**



AMINO PF1000-360-210



AMINO DSF050-360-210

## BLANKING PRESS LINE

- **KOMATSU 72" COIL LINE 300-TON COIL LINE, Width: 400-1830mm, Thickness: 0.5-2.3mm, Feed Length 100mm-3500mm, Cutting Speed 20-80 SPM, Piling; Sheet Length: 150-2500mm, Width: 400-1830mm, Weight: 5-Ton Max, Height: 350mm**
- **KOMATSU E4B300-MFC BLANKING PRESS, 300 METRIC TONS, Slide Stroke: 250mm, Die Height: 750mm, Slide Adjustment: 200mm, Strokes Per Minute: 10 & 20-80 SPM, Slide Area (R-L x F-B): 3600x2200mm, Bolster Area (R-L x F-B): 3600x2100mm, Bolster Thickness: 250mm, Balancer Capacity: 8 Metric Tons, Carrier Capacity: 16 Metric Tons, Main Motor: DC 75KW (100HP)**
- **KOMATSU 300-TON PILER/STACKER LINE, Thickness: 0.5min - 2.3t max, Main Piler: Width 400-1830mm, Length (#1 & #2) 150-2500mm, Side Piler: Width 400-1830, Length 150-1750mm, Main Piler: Plate Width 400-1830mm, Length 150-2500mm, Height: 350mm, Weight: 5,000kg/1 Stack, Side Piler: Plate Width 400-1830mm, Length 150-1750mm**
- **KOMATSU 300-TON BUNDLETURN OVER, Stack Specifications 50-250mm Stack Height, 5,000-kg Max Weight, Inverter; turning speed 15 sec/180 Degree, 2 Points Stop Position, 1800mm Turning Center Height, Clamper; 44-Ton Capacity, 2.7 sec/100mm Stroke, 420mm Clamp Stroke**
- **SHEET RACK SYSTEM, (1987) Max Load Type 2500mm Length x 1700mm Width x 350mm Height, 5,000-Kg Max Load, 30 Shelves Cap., 2300mm Rack Height, 5660mm Entire Rack Width**
- **DIE RACK SYSTEM, (1987) Max Load Type 3600mm Length x 2100mm Width x 600mm Height, 10,000-Kg Max Load, 50 Shelves Cap., 8580mm Rack Height, 4860mm Entire Rack Width**
- **OYABE SEIKI PL-190X410 OVERSIZE SHEET STACKER, (2002) Blank Size: 1200-4100mm, transversal 800-1900mm, Thickness 0.5-2.3mm, 60kgf/1 Blank, Stack Size 50-400mm, 6000kgf Weight, Small Pallet Size 2176.2mm x 1795mm x 203.22, Large Pallet Size 4276.2mm x 1795mm x 203.22mm, Line Speed 150m/min**



KOMATSU BLANKING PRESS LINE



KOMATSU BLANKING PRESS



OYABE SEIKI SHEET STACKER

**2 Available**

# STAMPING

## BLANKING PRESSES

- 1988 642-TON SCHMID FINE BLANKING PRESS, MDL. HSR-630, Strokes Per Minute: 40, Tool Clamping Area (L x W): 35.43" x 35.43", Cutting Speed: 10- 30 MM/S
- (2) 1981 630-TON METRIC-TON SCHMID FINE BLANKING PRESS LINES, MDL. HSR 630 S/N 43603, 1150 MM x 1300 MM Clamping Area, 520 MM x 20 MM Strip Width, 40-30 MM Working Stroke, 40 MM V Ring Stroke, 40 MM Counter Stroke
- 1998 510-Ton SCHMID FINE BLANKING PRESS, Mdl. HSR-500, Tool Clamping Area (L x W): 31.5" x 31.5"; Strokes Per Minute: 40, Cutting Speed: 15-44 MM/S

## PUNCH PRESSES

- 1986 60-TON FEDERAL STRAIGHT SIDE DOUBLE CRANK PUNCH PRESS, MDL. PD2-60X42, 42" x 25" T- Slotted Bed, 42" x 20" T- Slotted Ram, 3" Ram Stroke, 3" Ram Adjustment, 17" Shut Height, 50- 260 SPM, Air Clutch & Brake, Shadow IV Light Curtains, Power Ram Adjustment, Wintress Safety Controls, Remote Stand Alone Control Cabinet With Dual Palm Control
- 1978 60-TON MINSTER HIGH SPEED STRAIGHT SIDE PUNCH PRESS, 36" x 25" T- Slotted Bed, 33" x 21" T- Slotted Ram, 3" Ram Stroke, 3" Ram Adjustment, 24 1/2" Shut Height, 0- 200 SPM, Air Clutch & Brake, Helm Load Guard Mdl. TLG 4500 Overload Protection System, Power Ram Adj., Remote Control Cabinet w/Dual Palm Control

## GAP PRESSES

- 1999 275-TON SUTHERLAND GAP FRAME SINGLE CRANK PRESS, MDL. MARK 275-1W, 59.05" x 35.43" x 7.08" Bed, 37.40" x 28.34" Ram, 7.08" Ram Stroke, 4.70" Ram Adjustment, 15.74" Shut Height, Variable Speed 30- 50 SPM, Wet Air Clutch & Brake, Bed Cushion, Shadow VI Light Curtains, Power Ram Adjustment, Remote Dual Palm Control Stand, Horsepower: 30
- 1985 175-TON AIDA DOUBLE CRANK GAP FRAME PRESS, MDL. NC2-160, 80" x 30" T- Slotted Bed, 60" x 23" T- Slotted Ram, 7.87" Ram Stroke, 3.94" Ram Adjustment, 17.7" Shut Height, 30- 55 SPM, Wet Clutch & Brake, Light Curtains, Smartpac Wintress Automation Control, Power Ram Adjustment, Hydraulic Overload Protection, Remote Control & Dual Palm Control Stand, Horsepower: 20

## NATIONAL COLD FORMER/HEADER

- 1982 1 1/8" NATIONAL 5 DIE 6 STATION COLD FORMER, MDL. 1000-6 S/N 38907, 3-1/2" Max. Cut Off Length, 5" Max. Die Kick Out, Nut Transfer/Turnaround And/Or Straight Across, Timed Knockout, 5 Roll Power Pre-Straightener & Smog Hog, Bushing Cutoff, Extra Rebuilt Transfer Unit, Never Used, Reconditioned In 2005

## HYDRAULIC PRESSES

- 5,000-TON LAKE ERIE 4 POST HYDRAULIC DOWNACTING PRESS w/Rubber Forming Pad, 112" x 48" Bed Size, 78" x 64" Between Posts, 48" Ram Stroke, 60" Daylight, Rubber Pad Fluid Forming Unit Top Mounted, Disassembled & Ready To Load Out, (Location: Fort Worth, TX)
- 3,500-TON LAKE ERIE 4 POST HYDRAULIC DOWNACTING PRESS w/Rubber Pad, 120" x 96" Bed, 96" x 60" Between Post, 30" Ram Stroke, 54" Daylight, 128" x 45" Shuttle Table, Rubber Pad, Disassembled & Ready To Load Out, (Location: Fort Worth, TX)
- 2,000-TON K.R. WILSON 4 POST DOWNACTING HYDRAULIC PRESS, Mdl. DC-SA 4, 120" x 48" Bed, 54" x 48" Between Post, 36" Ram Stroke, 48" Daylight, 120" x 48" Shuttle Table, Floor Standing Press, Disassembled & Ready To Load Out, (Location: Fort Worth, TX)
- 1992 200-TON PACIFIC DOWN ACTING HYDRAULIC PRESS, MDL. 200-D8-48-96, Bed Size (L-R, F-B): 96" x 48", Hydraulic Die Cushion-Estimated @ 66Ton. 34" x 34" PAD/ 8-18" Stroke, Programmable Cushion Control For Tonnage And Height, Programmable Drawing Speeds, Hydraulic Unit-400 Gallon Reservoir, GIB Guides, Drive Motor 460 Volts, Allen Bradley PLC Controls, Light Curtains, Horsepower 40
- 1998 100-TON SUTHERLAND HYDRAULIC STRAIGHT SIDE PRESS, MDL. HD1-100, 47" x 39" Bed & Ram. 23.6" Ram Stroke, 31.4" Daylight, 7.87" Closed Height, Allen Bradley SLC- 503 Programmable Control, 8 Point Gibbing, STI Light Curtains, Remote Dual Palm Control Stand, Horsepower: 25

## INDUCTION HEATER

- 2000 50 KW PILLAR INDUCTION HEAT TREAT SYSTEM, MDL. AB7109-503, 3" x 0.580" Max Part Dia., Allen Bradley Panelview 1000 Control, Mark 11 RF Generator Control, Kerr Mdl. M6M-FM-8 Water Pump, Stainless Steel Quench Tank, Lift & Rotate Fixture, Wintriss Shadow VI Light Curtains, Simpson AC Elapsed Time Meter

## FEED LINES & LEVELERS

- 60" X 0.105" HERR VOSS 4 HI ROLLER LEVELER, MDL. 66/1.687/19/5, Capacity (Mild Steel): 0.024" - 0.105", Width: 12" - 60", Working Roll, Diameter (19): 1.687", PSI Rating: 40,000, Roll Speed: 160 FPM
- 1999 24" X 0.110" X 6,000 LBS. COE SERVO FEED LINE, MDL. CPRF-SM-324, Max. Speed: 365 FPM, Straightener Mdl. CPPS-PO-300-24 S/N 22641-2, Capacity: 0.025" - 0.110", Max. Width: 24", Payoff Rate (Variable): Up To 100 FPM, Straightening Roll Diameter (7): 3", Motor: 7 1/2 HP
- 1984 16" X 0.137" HERR VOSS MINI LEVELER, Cap. (Mild Steel): 0.060" - 0.137", Max. Width: 16", Roll Dia. (17): 2.187", Roll Speed (Var.): 0- 50 FPM, Yield: 80,000 PSI, Face: 20"



5000-TON

LAKE ERIE HYD. DOWNACTING PRESS



642-TON

SCHMID FINE BLANKING PRESS



630-TON

SCHMID HYD. FINE BLANKING PRESS



1999

510-TON

SCHMID FINE BLANKING PRESS



1992

200-TON

PACIFIC DOWN ACTING HYD. PRESS



1999

100-TON

SUTHERLAND HYD. SS PRESS

# STAMPING



3500-TON

LAKE ERIE 4 POST HYDRAULIC PRESS



2000-TON

KR WILSON 4 POST HYD. PRESS



1-1/8" Capacity

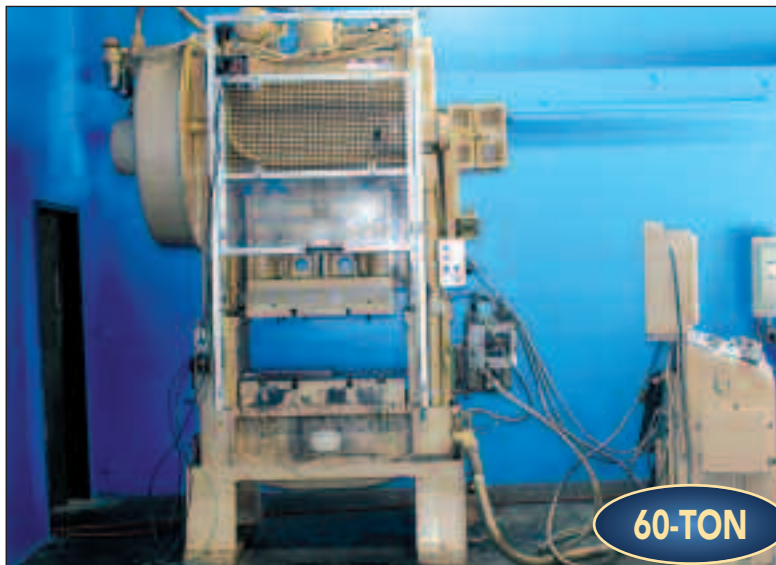
NATIONAL 5-DIE 6-STATION COLD FORMER



1999

270-TON

SUTHERLAND GAP FRAME PRESS



60-TON

MINSTER HIGH SPEED STRAIGHT SIDE PUNCH PRESS



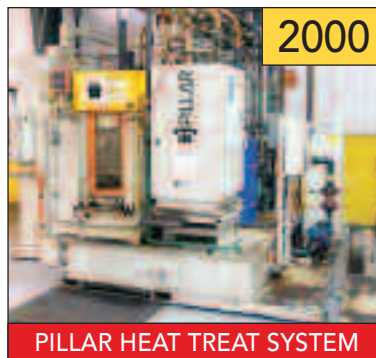
60-TON

FEDERAL SSDC PUNCH PRESS



175-TON

AIDA DOUBLE CRANK GAP FRAME PRESS



2000

PILLAR HEAT TREAT SYSTEM



1999

COE SERVO FEED LINE



HERR VOSS 4 HI ROLLER



1984

HERR VOSS MINI LEVELER



# PLASTICS

- (2) MITSUBISHI 4500MM3-740 4500-TON X 740-OZ. INJECTION MOLDING MACHINES, 2002 & 1998, Platen Size 125.98" x 110.23", Distance Between Tie Bars 89.37" x 73.62", Max Clamp Stroke 106.50", Max Daylight 145.67", Max Stroke 13.78", Screw Stroke 34.49", AEC Hydraulic Reclaim Weigh Scale Blender Optimum Series, (2) AEC Feed Hoppers, (1) With Sytrama Model S50 Robot (2014) S/N 5584, (1) With Star Model TW-2500FMIV3 Robot, (1) AEC Nelmor Granulator 16" x 20" Opening with VT Control Panel, AEC Model M1B20-Q Storage Bin with HE-50 Feed, AEC Pinnacle Series Chiller, 24 Station Hot Runner Control, AEC 8 Station Temperature Control Model PTFW-1NXR, S/N 98F5198, (5) Mitsubishi 55KW Induction Motors, 24" x 13' Belt Conveyor, (3) Mold Transfer Tables
- AEC WHITLOCK VACUUM & DRYING SYSTEM • (2) RAPID GRANULATORS, Type 1831K & 1824-K • 2004 BADGER TYPE 25A/8 FOAM DENSIFIER

2002 & 1998

4500-TON



2 Available

MITSUBISHI 4500MM3-740 4500-TON X 740-OZ. INJECTION MOLDING MACHINES



2014

SYTRAMA MODEL S50 ROBOT



RAPID GRANULATORS



RAPID GRANULATORS



2004

BADGER FOAM DENSIFIER

# ROBOTS

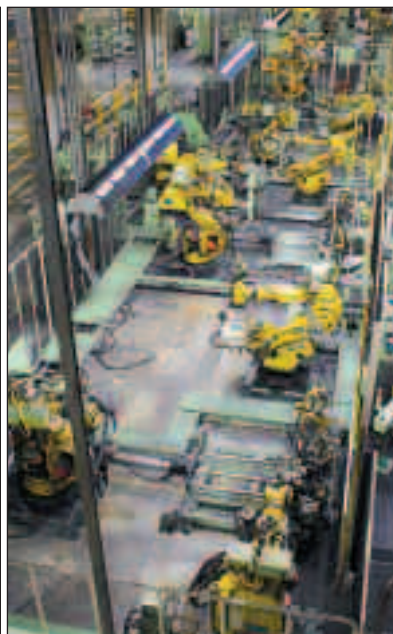
## BODY SHOP ROBOTS

- (5) FANUC ARCMATE 120I VERSION RJ3, Up to 2005
- (2) FANUC ARCMATE 120IA VERSION RJ3, 2002
- (6) FANUC ARCMATE 120IB VERSION RJ3IB, Up to 2004
- (10) FANUC F200IB VERSION RJ3IB, Up to 2006
- (4) FANUC LR-MATE 200I VERSION RJ3, 2000
- (1) FANUC M710I VERSION RJ3, 2003
- (2) FANUC M710IC VERSION RJ30IB, 2012
- (1) FANUC M710IW VERSION RJ3, 2004
- (1) FANUC R2000IA-125L VERSION RJ3IB, 2004
- (2) FANUC R2000IA-165CF VERSION RJ3IB, Up to 2004
- (178) FANUC R2000IA-165F VERSION RJ3I, Up to 2005
- (2) FANUC R2000IA-165F VERSION RJ3I, w/8th Axis
- (2) FANUC R2000IA-165F VERSION RJIB, 2002
- (230) FANUC R2000IA-165F VERSION RJ3IB, Up to 2005

- (2) FANUC R2000IA-165F VERSION RJ3IB, with 7th Axis, 2002
- (29) FANUC R2000IA-165R VERSION RJ3IB, Up to 2005
- (10) FANUC R2000IA-200F VERSION RJ3I, Up to 2005
- (12) FANUC R2000IA-200F VERSION RJ3IB, Up to 2005
- (7) FANUC R2000IA-200FO VERSION RJ3IB, 2004
- (4) FANUC R2000IA-200R VERSION RJ3IB, Up to 2004
- (2) FANUC R2000IA-200T VERSION RJ3IB, 2004
- (1) FANUC R2000IB-165F VERSION RJ3IC, 2007
- (3) FANUC R2000IB-210F VERSION RJ3IC, Up to 2008
- (1) FANUC S430I VERSION RJ3, 1999
- (7) FANUC S430ICF VERSION RJ3I, Up to 2005
- (1) FANUC S430ICF VERSION RJ3IB, 2002
- (2) FANUC S430ICR VERSION RJ3I, 2001

- (5) FANUC S430IF VERSION RJ3, Up to 2000
- (2) FANUC S430IL VERSION RJ3, 2005
- (6) FANUC S430IR VERSION RJ3, Up to 2003
- (5) FANUC S430IR VERSION RJ3I, 2001
- (1) FANUC S430IR VERSION RJ3I, with Sealer & 7th Axis, 2005
- (2) FANUC S430IR-165 VERSION RJ3I, 2001
- (1) FANUC S430IR-165 VERSION RJ3I, with 7th Axis, 2001
- (1) FANUC S430IR-200 VERSION RJ3I, 2001
- (1) FANUC S430IRW VERSION RJ3, 1988
- (1) FANUC S430IW VERSION RJ3I, 2005
- (3) FANUC S430IW VERSION RJ3, Up to 2004
- (2) FANUC S900IB-400 VERSION RJ3IB, 2004

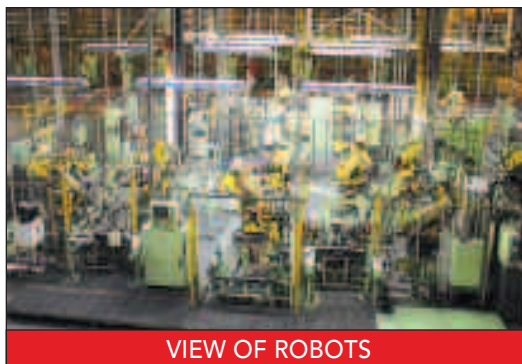
**OVER  
650  
ROBOTS**



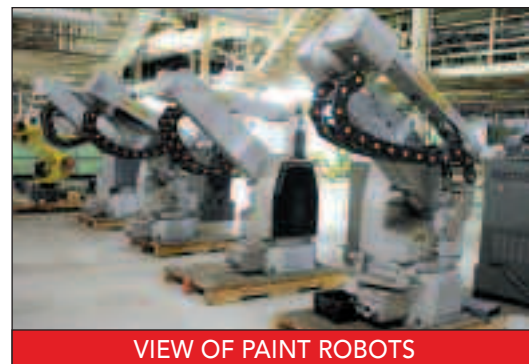
VIEW OF ROBOTS

## PAINT ROBOTS

- (2) MMC MODEL CCT
- (5) FANUC M16IL VERSION RJ3IB, Up to 2006
- (8) FANUC M16IL VERSION RJ3, Up to 2002
- (2) FANUC M710IB VERSION RJ3IB, 2003
- (3) RANSBURG MINI-BELL, 1988
- (10) FANUC P200 VERSION RJ-2, Up to 1997
- (10) FANUC P200 VERSION RJ-3, Up to 2001
- (38) FANUC P200E VERSION RJ3IB, Up to 2006
- (6) FANUC R2000IB VERSION RJ3IB, Up to 2005
- (4) FANUC S500 VERSION RJ3, Up to 2002
- (12) FANUC S500IB VERSION RJ3IB, Up to 2006



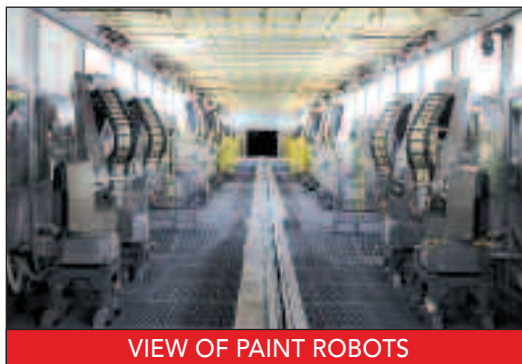
VIEW OF ROBOTS



VIEW OF PAINT ROBOTS

## TRIM & FINAL ROBOTS

- (10) FANUC S420F VERSION RG2, Up to 1999
- (2) FANUC S420IF VERSION RJ2, 1997
- (1) FANUC S420IF VERSION RJ3, 2001
- (1) FANUC 2000IR-165 VERSION RJ3, 2006
- (6) FANUC 2000IF-165 VERSION RJ3, Up to 2014
- (2) FANUC 2000IF-250 VERSION RJ3, 2001
- (2) FANUC M710 VERSION RJ3, Up to 2002
- (1) FANUC S900 VERSION RJ2, 1997
- (1) FANUC S430CF VERSION RJ3, 2001
- (4) FANUC LR MATE VERSION RJ3, Up to 2000
- (11) FANUC R2000I VERSION RJ3, Up to 2003
- (1) FANUC M900IA/600 VERSION RJ3, 2013



VIEW OF PAINT ROBOTS



VIEW OF ROBOTS

# CNC's



MITSUBISHI CNC BRIDGE MILL

- **MITSUBISHI MVR-28/30-NC CNC BRIDGE MILL**, Travels: X-Axis 4000mm, Y-Axis 2000mm, Z-Axis 800mm, W-Axis 1000mm, 3000-rpm, Feed Speed 400mm/Min, Table Size 4000x2000mm, 13.2-Ton Max Work Weight, Fanuc S9 Controls
- **OKK MHA-400II "AUTO MILLER" CNC VERTICAL MILLING MACHINE**, Travels: X-Axis 920mm, Y-Axis 410mm, Z-Axis 500mm, 1800-RPM, 4000mm/Min Feed Speed, Table Size: 1100x450mm, Meldas 85M Controls, 40 Taper
- **OKK KCV600 CNC VERTICAL MACHINING CENTER**, Travels: X-Axis 1530mm, Y-Axis 640mm, Z-Axis 640mm, 6000-RPM, 5000mm/Min Feed Speed, Table Size: 1780x640mm, Meldas 500M Controls, 50 Taper



OKK MHA-400II CNC VMC



OKK KCV600 CNC VMC

# WELDERS

- **MILLER BOBCAT 225 NT CC/CV DC Welder/Battery Charger/Generator**, 140 Operating Hours
- **MILLER BOBCAT 225G Welder Generator**, 8,800 Watts
- **LINCOLN ELECT. WELDANPOWER**, AC/DC Arc Welding Power Source & AC Power Generator
- (8) **MILLER AUTO DELTAWELD 452**, CV DC Arc Welding Power Source
- (27) **MILLER DELTAWELD 452**, CV DC Welding Power Source
- (20) **MILLER DELTAWELD 451**, CV DC Arc Welding Power Source
- **MILLER DELTAWELD 300**, CV DC Welding Power Source
- (7) **MILLER DIALARC 250**, CC AC/DC Arc Welding Power Source
- (2) **MILLER SYNCROWAVE 351**, CC AC/DC Welding Power Source
- **MILLER SYNCROWAVE 350 LX**, CC AC/DC Squarewave Power Source
- **MILLER SYNCROWAVE 350**, CC AC/DC Arc Welding Power Source
- (5) **MILLER SYNCROWAVE 250 DX**, CC AC/DC Squarewave Power Source
- (13) **MILLER SYNCROWAVE 250**, CC AC/DC Arc Welding Power Source
- **MILLER CP300**, CV DC Arc Welding Power Source
- (2) **MILLER CP-252TS**, CC DC Welding Power Source
- (48) **MILLER CP-250TS**, CV DC Arc Welding Power Source
- **LINCOLN ELECTRIC INVERTEC V300-PRO CV/CC Welding Power Source**
- (3) **LINCOLN ELECTRIC IDEALARC 250**, Arc Welder
- **HOBART MEGA-ARC 300 ARC WELDER**, 300-Amp
- **GESSWEIN WELDMAX 250 3IN1**, Tig, Stick, Plasma
- (3) **MIG WELDERS**, Miller Auto Invision, L-Tec Mig 130, Hobart RC-200
- **ESAB SABRE 1000 PLASMA CUTTING SYSTEM**
- (5) **PLASMA CUTTERS**, Esab Powercut 900, Esab Handy Plasma 125, Hypotherm Powermax 1000, Hypotherm Max 40cs, Plasmarc PCM-703
- **LINCOLN TIG-250**, Tig Welder
- **MILLER CRICKET**, Wire Welder
- **MILLER WIRE FEEDERS, ROBOTIC INTERFACE WELD CONTROLLERS**
- (10) **LENCO LP-1000 DENT PULLER**
- **AIRCO DIP PAK 225 WELDER**
- **OXY/ACETYLENE TORCH SETS**
- **QTY. OF SPOT WELDERS**
- **WELDING ACCESSORIES**, Guns, Cable, Welding Wire, Welding Rods, Tips & More



**OVER  
200  
AVAILABLE**

VIEW OF WELDERS



VIEW OF SPOT WELDERS

# MACHINE SHOP



DAKE HORIZONTAL SAW



JET GH-1340R LATHE



OKAMATO 12 X 24 SURFACE GRINDER



AMADA SQUARING SHEAR



ROUSSELLE PRESS BRAKE



POWER TEAM



IRONWORKER

- (5) VERTICAL MILLING MACHINES, 2-Hp & 1-HP, JET & Bridgeport
- (8) ENGINE LATHES, JET Models 1660-3PGH, GH-1660, GH-1340W-1, GH-1340R, (2) Clausing Colchester 13", Nova C6233A, Hardinge HLV-4,
- (13) VERTICAL BAND SAWS, Marvel Model V-10A, (2) Series 8 Mark II, Delta, Jet VBS-1610, DoAll 2013V, Dayton 3Z360C, (3) Wilton 8014, Dake 988051-4, Lincoln KV-50, Steel Mak
- (9) HORIZONTAL BAND SAWS, (2) Kalamazoo 13AW, H9AWY, DoAll C-916M, Rongu Fu RF-115, Wilton, Dake JH10, Jet HVBS-7MW, HVBS-463
- (8) H-FRAME SHOP PRESSES, Up to 100 Ton, (3) Power Team, Ramco, Enerpac, SPX, (2) Dake
- (17) DRILL PRESSES, Up to 20", Jet, Wilton, Dake, DoAll, Clausing, Smithy
- (4) ARBOR PRESSES, Famco
- OKAMOTO ACCUGAR-124N 12" X 24" SURFACE GRINDER, with 12" x 24" Electromagnetic Chuck
- BROWN & SHARPE 612 VALUMASTER 6" X 12" SURFACE GRINDER, with Walker 6" x 12" Electromagnetic Chuck
- (10) Combo 6" Sander/12" Grinder, Wilton & Enco
- (4) BLAST CABINETS, Trinco, Snap-On, Econoline
- (3) IRONWORKERS, 2011 Edwards 40 Ton, Piranha P35 35 Ton, Scotchman 6509 65 Ton
- AMADA M-2060 8' SQUARING SHEAR
- ROUSSELLE POL3510 5' PRESS BRAKE
- ITEMS THROUGHOUT FACILITY to include OTC SPM256C Punch Press, Boredom Precision Grinder, 4" & 6" Belt Sanders, Double End Grinders Up to 12", Bench Grinders, Delta 10" Table Saw, National NH4825 4' Shear, Bendito 1840 Hand Brake, Custom Cutter & Punch Stations, Pipe Benders, Hydraulic Hoses & Fittings, Hydraulic Power Sources, Hyd. Hand Pumps, Parlex Parsetter 260 Tool Setter, Koanestu Demagnetizer, Spiro-Therm DU1224I Dual Oven, Portable Dust Collectors, Hyd. Jacks, Buehler Metaserv Abrasive Cutter, Leco CM-15 Cut-Off Machine, Leco VP-160 Variable Speed Grinder, Steel Tables, Bolt Bins, Tool Cabinets, 2 Door Cabinets, Qty. of Barrel Pumps, Inventory Scanning Carts, Shop Desks, Filing Cabinets, Cleaning & Janitorial Supplies, Benches, Computer Control Cabinets, Scaffolding, Shop Vacs Cable Hoists, Transformers, Fluorecent Light Fixtures, Safety Switches, Blowers, Enclosures, Bench Vises, Jet Stream, 4215 Waterblast Pump System, National Liquid Blasting System, Lubecon Units, Small Air Compressors, Control Cabinets, Reco BC Induction Bearing Heater, Light Inspection Booths, Paint
- (2) CRIMPERS, Gates & Coil Crimp, with Hose Cut-Off Saw
- (6) RIDGID PIPE THREADERS, 535, 300, 700
- GREENLEE 555 SPEED BENDER
- LANDA ENG3-11021D PRESSURE WASHER, 1,000-PSI Max, 2.8-GPM, 225 Degree F Max Temp
- LARGE QTY. OF ELECTRIC HAND TOOLS, Jig Saws, Grinders, Bandsaws, Sawzalls, Hammer Drills, Angle Grinders, Chop Saws, Drills, Sanders, Right Angle Drills
- LARGE QUANTITY OF AIR TOOLS, Impacts, Right Angle Impacts, Drills, Drivers, Grinders, Profile Grinders, Palm Sanders, Torque Readers
- LARGE QUANTITY OF TORQUE TOOLS, Drills, Right Angle Torque Wrenches, Digital and Dial, NEW IN BOX
- LARGE QUANTITY OF CORDLESS TOOLS, Drills, Drives, Impacts, Dispensing Guns and More
- LARGE QUANTITY OF ADJUSTABLE PALLET RACKING, DIE RACKING, CANTILEVER RACKING & GRAVITY RACKING
- PARTS & STORAGE CRIBS, includes Large Inventory of Motors, Ranging from 1/4 HP to 200-HP, Gear Cases, Bearings, Sealer Pump Parts, Hood Conveyor Shaft Parts, Knight Cable Hoists, Circuit Breakers, Cylinders, Inverters, Rollers, Control Buttons, Fans, Servo Motors, Servo Cables, Pendant Controls, Fanuc Amplifiers, Miller Robotic Interfaces, Motors, Sprockets, Bolt Bins, Enclosures, Chains, Robot Components, Valve/Pump Parts & More

Complete Photos & Lot Listings at [www.biditup.com](http://www.biditup.com)

# MACHINE SHOP



VIEW OF PNEUMATIC & CORDLESS TOOLS



VIEW OF PNEUMATIC & CORDLESS TOOLS



PRESSURE WASHER



**OVER  
300  
AVAILABLE**

VIDMARS



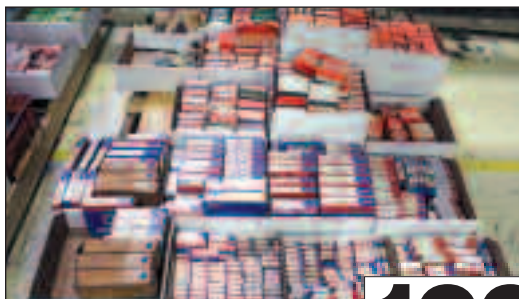
PALLET RACKING



GRAVITY RACKING



EQUIPTO CABINETS



VIEW OF BEARINGS



VIEW OF MOTORS



VIEW OF MOTORS

**1000's**  
Lots of Bearings,  
Motors, Parts, etc.



VIEW OF MOTORS



VIEW OF MOTORS



VIEW OF MOTORS

# PAINT

- U.S. FILTER ROSLH3360SS FILTRATION UNIT
- (5) GRACO STAINLESS STEEL PRESSURIZED TANKS
- (2) MATCON SYSTEMS PUMP CIRCULATION UNITS

- TECHNADYNE PUMP CIRCULATION UNIT
- (3) OBERLIN OPF-12 PRESSURE FILTERS
- (3) GRIFFIN FILTER BOXES WITH BLOWERS

- (4) SUPERCHANGER HEAT EXCHANGERS
- PAINT ROOM, Incl. (17) Graco Stainless Steel Mixing Stations, (4) Stainless Steel Tanks, Mixers & Pumps, (3) Drum Pump Out Units

3 Available



OBERLIN OPF-12 PRESSURE FILTERS



VIEW OF PAINT MIXERS



VIEW OF PAINT MIXERS

# DIES & MOLDS



**OVER  
12 Million  
POUNDS OF  
CAST IRON DIES  
AND STEEL  
MOLDS**



# FACILITY EQUIPMENT



2 Available

ATLAS COPCO TYPE ZR 6A ENCLOSED AIR COMPRESSOR



3 Available

ATLAS COPCO HL-7 CENTRIFUGAL AIR COMPRESSORS, 1,250-HP



3 Available

ATLAS COPCO AIR COMPRESSORS



2 Available

PNEUMATECH COMPRESSED AIR DRYERS



3 Available

YORK LIQUID CHILLER SYSTEM



5 Available

LAARS GAS FIRED HOT WATER BOILERS



2 Available

JWI FILTER PRESS



3 Available

MARLEY COOLING TOWERS

- (3) ATLAS COPCO HL-7 CENTRIFUGAL AIR COMPRESSORS, 1,250-HP, 3 Stages, 3575-RPM, 6,309 CFM Cap, Heat Exchangers, Allen Bradley Panelview 1000 Control
- (2) ATLAS COPCOTYPE ZR 6A ENCLOSED AIR COMPRESSORS, 67,046 & 60,133 Operating Hrs
- (3) ATLAS COPCO ZT ENCLOSED AIR COMPRESSORS
- (3) PNEUMATECH PWC55ADS/40 COMPRESSED AIR DRYERS, 5,500 SCFM, 150 MAX PSIG
- (2) PNEUMATECH PWC40ADS/40 COMPRESSED AIR DRYERS, 4,000 SCFM, 150 MAX PSIG
- BRUNNER VERTICAL AIR RECEIVING TANK, 6,267 GAL CAPACITY
- (3) YORK YT A1 A1 B1-CFD LIQUID CHILLER SYSTEMS
- (4) TRANE WATER COOLED LIQUID CHILLER SYSTEMS

- (2) JWI FILTER PRESSES
- (5) LAARS RHCH2000NACF2EXN GAS FIRED HOT WATER BOILERS, (2005) Natural Gas, 2,000,000 Input Btu/Hr, 1,700,000 Output Btu/hr, 240 Degree Max Temp
- (3) MARLEY COOLING TOWERS
- FACILITIES EQUIPMENT TO INCLUDE, Diamond Demineralized Water Storage Tank 10,000-Gal Capacity, Diamond Raw Water Storage Tank 3,000-Gal Capacity, (6) Carbon Filter Tanks, Diamond Sulfuric Acid Tank 6,000-Gal Cap., Diamond Caustic Injection Tank 4,000-Gal Cap., Diaphragm Pumps, Vanguard Water Heater 50-Gal, Dip Tank, Tank 4,755 Gal Capacity, Floatation Tank 14,795 Gal Cap., Pressurized Drum, Plastic Tank 588 Gal Capacity, (2) Lamella Gravity Settler Units 10,600-Gal Capacity, Trutec Hot Water Tank 5 Pumps, Polypac Systems Hyd. Tank with (3) 50-Hp Motors, Crest Ultrasonics Cleaning Tank, Stainless Steel Station, Durr Filtration System, (2) Wash Tanks 1050 Gal Cap., (3) Rinse Tanks, (10) Water Pumps Up to 60HP, (5) Cooling Water Pumps 125-Hp, (4) Expansion Tanks

# CRANES & LIFTING

- 1999 LIFT SYSTEMS 400-TON GANTRY LIFTING SYSTEM WITH BEAMS AND RUNWAY, Mdl. 44A, Equipped with: (4) Hydraulic Lifting Cylinders, (2) Power Units to Operate (2) Lifting Cylinders
- WHITING 33 TON/30 METRIC-TON DOUBLE GIRDER BRIDGE CRANE, 60' Span, Bradley 33-Ton Hoist
- WHITING 44 TON/40 METRIC-TON DOUBLE GIRDER BRIDGE CRANE, 100' Span, 44-Ton Hoist
- WHITING 33 TON/30 METRIC-TON DOUBLE GIRDER BRIDGE CRANE, 100' Span, Bradley 33-Ton Hoist
- WHITING 22 TON/20 METRIC-TON DOUBLE GIRDER BRIDGE CRANE, 100' Span, 20-Ton Die Clamping Hoist
- (3) WHITING 28 TON/25 METRIC-TON DOUBLE GIRDER BRIDGE CRANE, 100' Span, Bradley 28-Ton Hoist
- P&H 44 TON/40 METRIC-TON DOUBLE GIRDER BRIDGE CRANE, 100' Span, 44-Ton P&H Cable Hoist
- P&H 44 TON/40 METRIC-TON DOUBLE GIRDER BRIDGE CRANE, 100' Span, (2) Hoists; (1) 44 Ton, (1) 22 Ton
- (2) WHITING 17-TON GANTRY CRANE SYSTEM, Double Girder, 2 Cable Hoists, (1) 15-Ton (1) 10-Ton
- JIB CRANES, Up to 2 Ton
- (3) SINGLE GIRDER ½-TON BRIDGE CRANES, 30' Span
- LIFTING EQUIPMENT THROUGHOUT FACILITY, Gantry Cranes, Cable Hoists, Free Standing Crane Systems, Chain Hoists, Lift Tables, Choker & Spreader Cables, Rigging Equipment, Shackles, Eye Lids, Straps, & More



**400-TON**

LIFT SYSTEMS 400-TON GANTRY LIFTING SYSTEM W/BEAMS & RUNWAY



WHITING 44 TON/40 METRIC-TON DOUBLE GIRDER BRIDGE CRANE



P&H 44 TON/40 METRIC-TON DOUBLE GIRDER BRIDGE CRANE



WHITING 33 TON/30 METRIC TON



WHITING 28 TON/25 METRIC TON

3 Available



WHITING 22 TON/20 METRIC TON



2 Available

WHITING 17-TON GANTRY CRANE



4 Available

BATTERY HANDLING SYSTEM

Complete Photos and Lot Listings Available at [biditup.com](http://biditup.com)



# EXCAVATOR, FORKLIFTS & ROLLING STOCK

- **CATERPILLAR 345B EXCAVATOR**, S/N CAT0345BKAPB00295, 6,538 Hours, with Ohio Magnetics 71 DAWX Magnet
- **BRODERSON IC-801C MOBILE BOOM CRANE**, 30' Reach, 37' Max Height @ 70 Degree Angle, 3,124 Operating Hours
- **SNORKELIFT TB-A 50R BOOM LIFT**, 50' Max Height, 30x60" Alum Platform/Bucket, 500-Lb Capacity, 5,958 Operating Hours
- **SNORKELIFT UNO-33G BOOM LIFT**, 32'8" Max Height
- **CUSHMAN 2 SEAT ELECTRIC MAINTENANCE CARTS**
- **CUSHMAN 3 WHEEL ELECTRIC PERSONAL CARTS**
- (4) **NUSTAR POWER PUSHERS**
- **AUTOLIFT ERA-300 30,000-LB CAP. ELECTRIC FORKLIFT**, (1995) 72-Volt, 121" Max Lift, Fork Spreaders, 60" Forks, 2,045-Hrs
- **ROYAL TE250C 25,000-LB CAP. ELECTRIC FORKLIFT**, 72-Volt, 210" Max Lift, Royal Rotating Forks, Spreader Forks
- **AUTOLIFT 22,500-LB CAP. ELECTRIC FORKLIFT** (1995)
- (2) **CAT 12,000-LB CAP. ELECTRIC FORKLIFTS**, Models M1200, EC500-120
- **CAT E8000 8,000-LB CAP. ELECTRIC FORKLIFT**, Cascade Fork Attachment
- (2) **MITSUBISHI FBC30N 6,000-LB CAP. ELECTRIC FORKLIFTS**
- (3) **6,000-LB CAP. ELECTRIC FORKLIFTS**, Cat MC60DP, Clark, NYK FE30C-50
- (3) **MITSUBISHI/CAT 2EC30 6,000-LB CAP. ELECTRIC FORKLIFTS**
- (3) **MITSUBISHI/CAT 2EC25 5,000-LB CAP. ELECTRIC FORKLIFTS**
- (9) **MITSUBISHI/CAT EC25K 5,000-LB CAP. ELECTRIC FORKLIFTS**
- (6) **MITSUBISHI/CAT EC15K 3,000-LB CAP. ELECTRIC FORKLIFTS**
- (9) **MITSUBISHI/CAT 2EC15 3,000-LB CAP. ELECTRIC FORKLIFTS**
- (15) **MITSUBISHI/CAT EP16KT 3,000-LB CAP. ELECTRIC FORKLIFTS**, 3 Wheel Dock Style

- (7) **MITSUBISHI FB16PNT 3,000-LB CAP. ELECTRIC FORKLIFTS**, 3-Wheel Dock Style
- (8) **MITSUBISHI FB16NT 3,000-LB CAP. ELECTRIC FORKLIFTS**, 3-Wheel Dock Style
- (8) **MITSUBISHI/CAT ET3000 3,000-LB CAP. ELECTRIC FORKLIFTS**, 3 Wheel Dock Style
- (2) **6,000-LB CAP. LPG FORKLIFTS**, Mitsubishi FGC30, Cat GC30
- (3) **CAT NOR30P 3,000-LB CAP. ORDER PICKER FORKLIFT**, 24-Volt, 240" Max Lift
- **FORKLIFT ACCESSORIES**, Jib Attachments, Rotator Attachments, Forks, Overhead Guards, Spreader Forks, Fork Guards, Replacement Tires
- (4) **3-TON BATTERY HANDLING CRANE SYSTEMS**, Approx. 20' Span, 3-Ton Chain Hoist, BHS Battery Lifter, Batteries and Racks
- (80+) **BATTERY CHARGERS**, 24-Volt & 36-Volt Hobart, ACT
- (5) **NYK NTF-200PN-50C TOW TUGGERS**
- (19) **NYK NTT100-S40C TOW TUGGERS**
- (1) **TAYLOR DUNNTOW TUGGER**
- (3) **AGV TYPE ULC-13 6 METRIC-TON PROGRAMMABLE DIE TRANSPORTERS** (2003)
- (2) **DIE TRANSPORTERS**, Aerogo 44 Ton, Custom 40-Ton
- (3) **RIDING FLOOR SCRUBBERS**, Tennant 8410, Advance 4800, 3800
- **ROLLING EQUIPMENT THROUGHOUT FACILITY**, Dump Hoppers, Regal MV54 Die Lift, Presto & Big Joe 2,000-Lb Cap. Walk Behind Pallet Lifters, Upright Aerial Work Platform, (3) Portable Jetting Systems, Genie SL-24 Material Lift, Pallet Jacks, 3 Wheel Bicycles & More



CATERPILLAR 345B EXCAVATOR



BRODERSON IC-801C MOBILE BOOM CRANE



SNORKELIFT TB-A 50R BOOM LIFT



SNORKELIFT UNO-33G BOOM LIFT

# FORKLIFTS & ROLLING STOCK



VIEW OF FORKLIFTS



VIEW OF FORKLIFTS



VIEW OF TUGGERS



3 Available

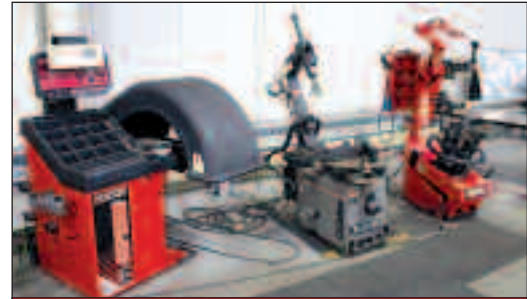
CAT ORDER PICKERS



AUTOLIFT 22,500-LB CAP. ELECT. FORKLIFT



ROYAL TE250C 25,000-LB CAP. ELECTRIC



TIRE BALANCER & TIRE CHANGER



9 Available

VEHICLE LIFTS



HUNTER HAWKEYE ALIGNMENT SYSTEM



DRIVE-ON TRUCK LIFT



TRAIN LOADING CAR RAMPS



DIE TRANSPORTER



3 Available

AGV PROGRAMMABLE DIE TRANSPORTERS

# VEHICLE EQUIPMENT

**HUGE  
QUANTITY  
MRO**

- **ITW MICRO-POISE TIRE SYSTEM**, Includes Wheel Delivery Conveyor, Hytrol Motorized Belt Conveyor, (2) Flexarm Attachments S/N 015579, 015580, 20' Roller Conveyor Section, (2) Wheel Delivery Escapements, (2) Dominion Tool & Die Stemmers, (2) 18" Vibratory Parts Feeding System, Wheel Delivery Conveyors, Wheel Soaper, Wheel Loader. Tire Delivery Conveyor includes Inclined Belt Conveyor, Roller Conveyors, Tire Soaper, Wheel Loader/Shuttle, Tire Loader/Shuttle, Wheel & Tire Lines Combine into 1 Line, Mounter, Matchmark, Inflator (Allen-Bradley Panelview 1400 Control), (3) Motorized Conveyors, Dominion Tool & Die Load Simulator (A-B Panelview 1000e Control), Side Exit from Load Simulator to Belt Conveyors to Exit, Approx. 100' Total Belt/Roller Conveyors, ITW Micro-Poise Primary Audit Camera Model 3700 S/N 4378, ITW Micro-Poise Dynamic Tire & Wheel Balancing System Model ATW/HS-229N S, Turnover Fixture Model TOF40, ITW Micro-Poise Conveyor Model CS35N, Gravity Turnover Fixture Model TOF40, Hytrol Transfer Roller Conveyor, ITW Micro-Poise Automatic Tire & Wheel Balancing System Model ATW/HS-229nba, Turnover Fixture TOF40, Approx. 100' Motorized Belt/Roller Conveyors, Ultimotion Inc Tire Stacker, Repair Station w/Flexarm
- **HORIBA ECDM-48L CHASSIS DYNAMOMETER**
- **HORIBA VETS 9000 VEHICLE EMISSION TEST**
- **(2) VEHICLE TEST CELLS**
- **SBT-102-4 SAFETY BRAKE TESTER**
- **HUNTER WA 440 HAWKEYE ELITE WHEEL ALIGNMENT SYSTEM**
- **HUNTER GSP9700 WHEEL BALANCER**
- **(3) TIRE CHANGERS**, Hunter TC3250, TC3500, FMC 8600
- **(2) TIRE BALANCERS**, Hunter 700, DSP9600
- **(7) TRAIN LOADING CAR RAMPS**, KABs Inc
- **(9) VEHICLE LIFTS**, (2) Rotary Lift 9,000-Lb, (3) Manitowoc 7,000-Lb, (4) Rotary Lift 10,000-Lb Capacity
- **ASSORTED VEHICLE EQUIPMENT**, Engine Hoists, Cherry Pickers, Transmission Jacks, Floor Jacks, Creepers, & More

## OFFICES

- Executive Offices, Conference Rooms, Cubicles, Tables, Chairs, Filing Cabinets, Desks, Computers, Phones, Copiers, Printers, TV's, Projectors, Server Room Equipment includes Servers, Racks, Cooling Systems, Accessories & More. Cafeteria Equipment includes Stainless Steel Refrigerators, Freezers, Grills, Fryers, Ovens, Sink Stations, Serving Carts, Warming Stations, Food Prep Stations, Heating Lights, Hoods, Cafeteria Tables and Chairs

# 1-DAY ONLINE ONLY AUCTION

**BIDDING CLOSES: Thursday, October 27th at 10:00am (ET)**

## INSPECTION & TESTING EQUIPMENT

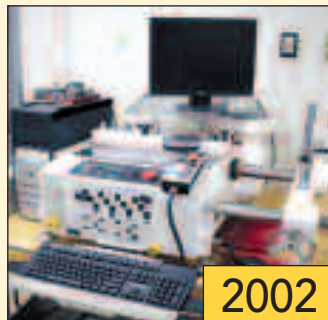
- **BROWN & SHARPE VENTO R6-1624/2 CMM**, (2000) with Renishaw ACR1 Autocharge Rack
- **BROWN & SHARPE CMM**, 79" x 118" Table, w/(2) Renishaw Probes MH8
- **BROWN & SHARPE 7-10-7 CMM WITH RENISHAW PROBE HEAD**
- **BROWN & SHARPE SYSTEM B CMM WITH RENISHAW PROBE HEAD**
- **CIM CORE SERIES 3000I PORTABLE CMM**
- **TOKYO BOEKI IN GROUND LAYOUT TABLE**, Mo. 20ES, S/n 20767, 20766, 12'x 276", (2) Renishaw MH8 Probes
- **SHEFFIELD 72A LAYOUT MACHINE**, (1987) 79" x 158"
- **TOHNICHI TF500 COMPUTERIZED TORQUE WRENCH TESTER (2002)**
- **TOHNICHI LL-2000 LINE CHECKER**
- **HOFMAN TYPE HPRS/M-400 ROTARY INDEX TALE**
- **SCHERR TIMCO 80" VERNIER CALIPER**, MITUTOYO 100CM VERNIER CALIPER
- **MITUTOYO 60" DIGITAL HEIGHT GAUGE**
- **OLYMPUS IF8D4-10 FIBERSCOPE**
- **CINCINNATI SUB ZERO HUMIDITY CHAMBER**
- **TABAL GPHH-200 GEER OVEN**
- **SUGA RA-3 RAIN TEST INSTRUMENT**, OMS-HVCT OZONE WEATHER METER
- **BALANCE TECH VHB100AC BALANCING MACHINE**
- **TINIUS OLSEN TENSILE TESTER & HARDNESS TESTER**
- **ATLAS CI65/XW WEATHER-OMETER CONTROLLED IRRADIANCE EXPOSURE SYSTEM**, C14000 XENON WEATHER-OMETER, ATLAS 25/18FT FADE-OMETER
- **MITUTOYO TYPE PV 350H PROFILE PROJECTOR**
- **UNIMET UNITRON 8885 MICROSCOPE**
- **MAHR MMQ40 FORM TESTER**
- Renishaw Probes & Tips, Bench Scales, Calibration Testers, Precision Weights, Electronic Levels, Digital Calipers, Digital Thermometers, Master Thermometers, Tension Force Meters, Digital Micrometers, Mic Stands, Gauge Blocks, Angle Gauge Blocks, Indicators, Squares, Depth Gauges, Digital/Dial Bore Gauges, Right Angles, Weigh Scale Dolly, Permascope, (4) Granite Surface Plates, Multimeters, Tachometers, Labconco 36" Laboratory Hood, Macbeth Light Inspection Station, Hardness Testers, Buehler Polimet Polisher, Torrmet Specimen Dryer, Vacuum Testers, Power Cable Locators, Leak Detectors & More



BROWN & SHARPE VENTO R6-1624/2 CMM



BROWN & SHARPE 7-10-7 CMM



TOHNICHI TF500



ATLAS CI65/XW



SUB ZERO HUMIDITY CHAMBER



SCHERR TIMCO 80" VERNIER CALIPER



SUGA RAIN TEST INSTR.



SUGA OZONE METER

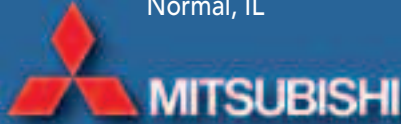
## 4-DAY LIVE ON-SITE & WEBCAST THEATER STYLE AUCTION

Oct. 18th thru 21st at 9am (CT) Daily

## 1-DAY ONLINE AUCTION (Inspection & Test Equipment)

October 27th at 10am (ET)

**LOCATION:** 100 N. Mitsubishi Mtwy,  
Normal, IL



## COMPLETE AUTOMOTIVE MFG. FACILITY

**OVER  
10,000 LOTS  
To Be Sold!**



4800-TON KOMATSU TRANSFER PRESS



4500-TON MITSUBISHI INJECTION MOLDER



VIEW OF ROBOTS

## BIDITUP

BIDITUP AUCTIONS WORLDWIDE  
AN INDUSTRIAL ASSETS COMPANY

11426 Ventura Boulevard  
Studio City, California 91604  
Phone: 818.508.7034  
Fax: 818.508.3025  
info@biditup.com

Steven Mattes, Auctioneer  
IL License #441.002197



SCAN QR CODE  
TO SEE ALL INFORMATION  
ABOUT THIS AUCTION!

## MACHINERY AUCTION, LOOK INSIDE!

**ATTENTION: PLANT MANAGER  
OR EQUIPMENT BUYER**



# 4-DAY LIVE ON-SITE & WEBCAST THEATER STYLE AUCTION 1-DAY ONLINE ONLY AUCTION (Inspection & Test Equipment)

## 4-DAY LIVE ON-SITE & WEBCAST THEATRE STYLE AUCTION:

Tuesday, October 18th thru Friday, October 21st at 9:00am (CT) Daily

**1-DAY ONLINE ONLY AUCTION CLOSSES (Inspection & Test Equip.):** Thurs., Oct. 27th at 10:00am (ET)

**LOCATION:** 100 N. Mitsubishi Mtwy, Normal, IL 61761

## COMPLETE AUTOMOTIVE MANUFACTURING FACILITY



### LODGING

**HOLIDAY INN EXPRESS** – (309) 820-9990  
1031 Wylie Dr, Bloomington, IL 61705

**FAIRFIELD INN & SUITES** – (309) 827-8000  
1014 Wylie Dr, Bloomington, IL 61705

**HYATT PLACE** – (309) 454-9288  
200 Broadway Ave, Normal, IL 61761

**QUALITY INN & SUITES** – (309) 662-7100  
1803 E Empire St, Bloomington, IL 61704

### DIRECTIONS

**FROM: O'HARE INT'L AIRPORT (ORD):** Get on I-294 S from Ohare Way and Balmoral Ave. Head southwest on I-190 W. Take the exit toward Bessie Coleman Dr. Use the right 2 lanes to turn right onto Bessie Coleman Dr. Turn left onto Ohare Way. Slight left to stay on Ohare Way. Continue onto Balmoral Ave. Use the right lane to take the ramp onto I-294 S. Take I-55 S to US-150 E in Dry Grove Township. Take exit 125 from I-74. Merge onto I-294 S. Use the right 2 lanes to take the Interstate 88 West E-W Tollway exit toward Aurora. Merge onto I-88 W. Use the right 2 lanes to merge onto I-355 S toward Joliet. Keep left at the fork to stay on I-355 S. Use the 2nd from the right lane to take the I-55 S exit toward St Louis. Keep left at the fork, follow signs for Joliet Rd S. Keep left, follow signs for I-55 S/St Louis and merge onto I-55 S. Take exit 163 for I-74 W toward Peoria. Continue onto I-74. Take exit 125 for U.S. 150 toward Mitsubishi/Motorway. Follow US-150 E to Mitsubishi Entrance Rd N. Turn left onto US-150 E. Turn left onto Mitsubishi Entrance Rd N.

**ONSITE BIDDER INSTRUCTIONS:** 18% Buyer's Premium will apply. \$500 cash minimum registration deposit or 25% of approximately bid amount (whichever is greater) via wire transfer ACH, cashier's check or bank letter to – Blank Signed Company Check (To be returned once final payment is received). Please refer to [www.biditup.com](http://www.biditup.com) for complete registration information.

**ONLINE BIDDER INSTRUCTIONS:** 18% Buyer's Premium will apply. All internet bidders must register for this auction at least 72-hours prior to the sale date, if you do not you will not be approved. All internet bidders must provide a wire transfer deposit of approximately 25% of your planned spending amount or \$2,500 minimum, whichever is greater in order to be approved to bid. Those who do not post the deposit will not be approved. Period. Please refer to [www.biditup.com](http://www.biditup.com) for online bidder terms.

## UPCOMING AUCTION CALENDAR

### COMPLETE DYEING & FINISHING PLANT FOR OPEN WIDTH & TUBULAR KNITTED FABRICS

AUCTION: Tues., Oct. 4 at 10:00am (PDT) • 12537 Cerise Ave., Hawthorne, CA 90250

**ONSITE & WEBCAST**

### GONZALEZ GROUP, LLC – HUGE SCREW MACHINE PLANT, TOOLING & SUPPORT EQUIPMENT

AUCTION: Wed., Oct. 5 at 10:00am (EDT) • 935 Anderson Road, Litchfield, MI 49252

**ONSITE & WEBCAST**

### GOLDEN STATE TOOL & DIE – COMPLETE TOOL & DIE SHOP, METAL STAMPING UP TO 800-TON CAP.

AUCTION: Thurs., Oct. 6 at 10:00am (PDT) • 7471 Greenbush Ave. & 7423 Varna Ave., No. Hollywood, CA 91605

**ONSITE & WEBCAST**