



# INDUSTRIAL ASSETS

REAL ESTATE • FINANCE • MACHINERY • AUCTIONS

industrialassets.com

# 3 AUCTIONS

## UNPRECEDENTED OFFERING OF FUEL-FRAC-VACUUM-TRUCKS-TRAILERS & RIGS

### AUCTION #1 Onsite & Global Webcast



**Unprecedented  
Multi-Million Dollar  
Offering of a Late Model  
Fuel Transportation Fleet  
as New as 2014**

**From One of the Oldest Trucking  
Companies in the Western US!**

**Tues., Oct. 3rd at 10am PDT**

**PREVIEW:**

Fri., Sept. 29th and Mon., Oct. 2nd,  
9:00am to 4:00pm Each Day or by Appt.

**LOCATION:**

10584 Redwood Avenue, Fontana, CA

**ADDITIONAL ITEMS LOCATED IN:** Yuma, AZ



**80+  
Trucks  
Available**

### AUCTION #2 Global Webcast

By Order of  
Secured  
Creditor



**Green Energy  
Oilfield  
Services, LLC**

**(86) Peterbilt Tractors & Winch  
Trucks, (340) Dragon Frac  
Tanks & (85) Vac Trailers**

**Thurs., Oct. 5th at 10am CDT**

**PREVIEW:**

Mon., Oct. 2nd thru Wed., Oct. 4th,  
9:00am to 4:00pm Each Day or by Appt.

**(5) LOCATIONS:**

1253 Hwy 97 East, Gonzalez, TX  
2651 Hwy 72, Three Rivers, TX  
782 Joe Garcia Ln, Asherton, TX  
335 Industrial Park Rd, Fairfield, TX  
19163 TX Hwy 7, Marquez, TX

**Sale in Conjunction with: ROSEN SYSTEMS**



**80+  
Peterbilts  
Available**

### AUCTION #3 Global Webcast

Former Assets of:



**(30) Freightliner Columbia  
Tractors & (33) Great Dane,  
Manac, Dorsey, Trailmobile  
and Pines Trailers**

**Tues., Oct. 10th @ 10am EDT**

**PREVIEW:**

Monday, October 9th,  
9:00am to 4:00pm Each Day or by Appt.

**LOCATION:**

800 So. Outer Drive, Saginaw, MI



**30  
Tractors  
Available**

**Complete Photos & Lot Listings at [www.biditup.com](http://www.biditup.com)**



818.508.7034  
[www.biditup.com](http://www.biditup.com)



248.569.9781  
[www.maynards.com](http://www.maynards.com)

# AUCTION #1: Live Onsite & Global Webcast

Tuesday, October 3rd at 10:00am PDT

PREVIEW: Fri., Sept. 29th and Mon., Oct. 2nd, 9:00am to 4:00pm Each Day or By Appt.

AUCTION TO BE HELD AT: 10584 Redwood Avenue, Fontana, CA

ADDITIONAL ITEMS LOCATED AT: 13771 So. Ave. 6-1/4 East, Yuma, AZ (No Onsite Bidding at Yuma)



## FROM ONE OF THE OLDEST TRUCKING COMPANIES IN THE WESTERN US!

### TANK TRUCKS

- 2014 PETERBILT 579, w/2014 Heil 4,365 Gal. Single-Compartment Tank Body
- (2) 2014 FREIGHTLINER CASCADIA, w/2004 Paramount 4,500 Gal. Single-Compartment Tank Body
- (3) 2014 FREIGHTLINER CASCADIA, w/2004 Heil 4,272 Gal. Single-Compartment Tank Body
- 2014 FREIGHTLINER CASCADIA, w/1995 Weld-It 4,500 Gal. Single-Compartment Tank Body
- (11) 2013 FREIGHTLINER CASCADIA, w/2013 Heil 4,365 Gal. Single-Compartment Tank Body
- (3) 2013 FREIGHTLINER CASCADIA, w/1994 Weld-It 4,500 Gal. Single-Compartment Tank Body
- (3) 2013 FREIGHTLINER CASCADIA, w/1990 Beall 4,600 Gallon Single-Compartment Tank Body
- 2013 FREIGHTLINER CASCADIA, w/1994 Weld-It 4,570 Gal. 2-Compartment (3,450/1,120) Tank Body
- 2013 FREIGHTLINER CASCADIA, w/1992 Weld-It 4,000 Gal. Single-Compartment Tank Body
- 2013 FREIGHTLINER CASCADIA, w/1980 Freuhauf 4,600 Gal. Single-Compartment Tank Body
- (4) 2013 VOLVO VNM64T ECO-TORQUE, w/2001 Paramount 4,000 Gal. 2-Compartment (3,000/1,000) Tank Body
- 2013 VOLVO VNM64T ECO-TORQUE, w/1988 Freuhauf 4,600 Gal. Single-Compartment Tank Body
- 2011 PETERBILT 384, w/2001 Weld-It 4,591 Gal. 2-Compartment (3,331/1,260) Tank Body
- 2011 PETERBILT 384, w/2000 Weld-It 4,592 Gal. 2-Compartment (2,955/1,637) Tank Body
- 2011 PETERBILT 384, w/2000 Weld-It 4,591 Gal. 2-Compartment (3,331/1,260) Tank Body
- 2011 PETERBILT 384, w/1998 Weld-It 4,320 Gal. Single-Compartment Tank Body
- 2011 PETERBILT 384, w/1997 Weld-It 4,592 Gal. 2-Compartment (2,955/1,637) Tank Body
- 2011 PETERBILT 384, w/1996 Weld-It 4,640 Gal. Single-Compartment Tank Body
- 2011 PETERBILT 384, w/1995 Weld-It 4,500 Gal. Single-Compartment Tank Body
- 2011 PETERBILT 384, w/1994 Weld-It 4,500 Gal. Single-Compartment Tank Body
- 2011 PETERBILT 384, w/1993 Weld-It 4,592 Gal. 2-Compartment (2,955/1,637) Tank Body
- 2011 PETERBILT 384, w/1993 Weld-It 4,500 Gal. Single-Compartment Tank Body
- (2) 2011 PETERBILT 384, w/1990 Beall 4,600 Gal. Single-Compartment Tank Body
- 2010 PETERBILT 384, w/1998 Weld-It 4,592 Gal. 2-Compartment (2,955/1,637) Tank Body
- 2010 PETERBILT 384, w/1998 Weld-It 4,596 Gal. Single-Compartment Tank Body
- (3) 2007 PETERBILT 385, w/1990 Beall 4,600 Gal. Single-Compartment Tank Body
- 2007 PETERBILT 385, w/1990 Beall 4,600 Gal. 2-Compartment (2,300/2,300) Tank Body
- 2007 PETERBILT 379, w/1990 Beall 4,600 Gal. Single-Compartment Tank Body
- (4) 2005 PETERBILT 385, w/2004 Heil 4,272 Gal. Single-Compartment Tank Body
- 2004 PETERBILT 385, w/2004 Paramount 4,500 Gal. Single-Compartment Tank Body



2014 Freightliner w/2004 Heil 4,272 Gal Single-Comp. Tank Body



**2013**

2013 Volvo w/ 2001 Paramount 4,000 Gal 2-Comp. Tank Body



**11 Available**

**2013**

2013 Freightliner w/2013 Heil 4,365 Gal Single-Comp. Tank Body



**2011**

2011 Peterbilt w/2001 Weld-It 4,591 Gal 2-Comp. Tank Body



**2014**

Volvo VNM64T Eco-Torque

## DAY CAB TRUCKS

- 2014 VOLVO VNM64T ECO-TORQUE, Volvo D13 (405 HP) Engine
- (2) 2013 VOLVO VNM64T ECO-TORQUE, Volvo D13 (405 HP) Engine
- 2013 FREIGHTLINER CASCADIA, Cummins ISX12 (307 HP) Engine

## SEMI TANK TRAILERS

- 2014 HEIL 9,500 GAL. SEMI TANK TRAILER, 4-Compartment (4,100/2,100/1,100/2,200) Elliptical T/A
- 2004 HEIL 9,400 GAL. SEMI TANK TRAILER, 4-Compartment (3,400/2,000/1,100/2,900) Elliptical T/A
- 1992 FREUHAUF 9,400 GAL. SEMI TANK TRAILER, 4-Compartments (3,600/2,000/1,100/2,700) Elliptical T/A

## PULL TANK TRAILERS

- 2014 HEIL 5,500 GAL. PULL TANK TRAILER, 3-Compartment (2,170/1,160/2,170) Elliptical 2-Axle
- 2014 HEIL 5,290 GAL. PULL TANK TRAILER, 3-Compartment (2,100/1,090/2,100) Elliptical 2-Axle
- 2007 HEIL 5,290 GAL. PULL TANK TRAILER, 3-Compartment (2,100/1,090/2,100) Elliptical 2-Axle
- (3) 2007 WELD-IT 5,600 GAL. PULL TANK TRAILERS, 3-Compartment (2,600/1,100/1,900) Elliptical 2-Axle
- (7) 2005 HEIL 5,300 GAL. PULL TANK TRAILERS, 3-Compartment (2,150/1,150/2,000) Elliptical 2-Axle
- (3) 2004 PARAMOUNT 5,300 GAL. PULL TANK TRAILERS, 3-Compartment (2,150/1,150/2,000) Elliptical 2-Axle
- 2001 WELD-IT 5,516 GAL. PULL TANK TRAILER, 2-Compartment (1,824/3,692) Elliptical 2-Axle
- (3) 2001 PARAMOUNT 5,000 GAL. PULL TANK TRAILERS, 3-Compartment (1,500/1,000/2,500) Elliptical 2-Axle
- (2) 2000 WELD-IT 5,600 GAL. PULL TANK TRAILERS, 3-Compartment (2,600/1,100/1,900) Elliptical 2-Axle
- 2000 PARAMOUNT 5,200 GAL. PULL TANK TRAILER, 2-Compartment (1,400/3,800) Elliptical 2-Axle
- (4) 1999 WELD-IT 5,600 GAL. PULL TANK TRAILERS, 3-Compartment (2,600/1,100/1,900) Elliptical 2-Axle
- 1998 WELD-IT 5,600 GAL. PULL TANK TRAILER, 3-Compartment (2,600/1,100/1,900) Elliptical 2-Axle
- 1998 WELD-IT 5,335 GAL. PULL TANK TRAILER, 2-Compartment (2,100/3,235) Elliptical 2-Axle
- 1997 WELD-IT 5,600 GAL. PULL TANK TRAILER, 3-Compartment (2,600/1,100/1,900) Elliptical 2-Axle
- (2) 1997 FREUHAUF 6,600 GAL. TANK TRAILERS, 3-Compartment (3,500/2,000/1,100) Elliptical
- (3) 1996 WELD-IT 5,540 GAL. PULL TANK TRAILERS, 3-Compartment (2,600/1,090/1,850) Elliptical 2-Axle
- 1995 WELD-IT 5,540 GAL. PULL TANK TRAILER, 3-Compartment (2,600/1,090/1,850) Elliptical 2-Axle
- 1995 WELD-IT 5,600 GAL. PULL TANK TRAILER, 3-Compartment (2,600/1,100/1,900) Elliptical 2-Axle
- (3) 1994 WELD-IT 5,600 GAL. PULL TANK TRAILERS, 3-Compartment (2,600/1,100/1,900) Elliptical 2-Axle
- (4) 1994 WELD-IT 5,475 GAL. PULL TANK TRAILERS, 3-Compartment (2,535/1,090/1,850) Elliptical 2-Axle
- 1989 FREUHAUF 5,100 GAL. PULL TANK TRAILER, 3-Compartment (1,900/1,200/2,000) Elliptical 2-Axle



**2014**

Heil 9,500 Gal 4-Comp. (4,100/2,100/1,100/2,200)

## COMPANY VEHICLES

- 2003 FORD F350 SUPER DUTY XL PICKUP TRUCK, w/Harbor 10' Utility Body
- 2003 FORD F150 XLT PICKUP TRUCK
- 1999 DODGE RAM 3500 DIESEL PICKUP TRUCK, w/Harbor 10' Utility Body
- 1999 DODGE RAM 2500 PICKUP TRUCK



**2014**

Heil 5,500 Gal 3-Comp. (2,170/1,160/2,170)



**2007**

1 of 3

Weld-It 5,600 Gal 3-Comp. (2,600/1,100/1,900)



**2005**

1 of 7

Heil 5,300 Gal 3-Comp. (2,150/1,150/2000)

## DAY CAB TRUCKS

- 2013 VOLVO VNM64T ECO-TORQUE, Volvo D13 (405 HP) Engine
- 2010 PETERBILT 384, Cummins M-11 (384 HP) Engine
- (2) 2009 PETERBILT 384, Cummins M-11 (384 HP) Engine
- (3) 2005 PETERBILT 385, Cummins ISM (370 HP) Engine
- (2) 2004 PETERBILT 385, Cummins ISM (370 HP) Engine
- (3) 2003 PETERBILT 385, Caterpillar C-12 (360 HP) Engine
- 2002 PETERBILT 385, Cummins ISM (425 HP) Engine

## SLEEPER CAB TRUCKS

- 2001 PETERBILT 385 UNIBILT SLEEPER, Caterpillar C-15 (375 HP) Engine
- 2000 FREIGHTLINER CENTURY CLASS FULL SLEEPER, Cummins N-14 Engine



2013 Volvo VNM64T Eco-Torque



2009 Peterbilt 384



2004 Peterbilt 385

## TANK TRUCKS

- 2007 PETERBILT 379, w/1998 Weld-It 4,596 Gal. Single-Compartment Tank Body
- 2007 PETERBILT 385, w/1997 Weld-It 4,580 Gal. 2-Compartment (2,300/2,280) Tank Body
- 2007 PETERBILT 385, w/1997 Weld-It 4,580 Gal. Single-Compartment Tank Body
- 2007 PETERBILT 385, w/1996 Weld-It 4,590 Gal. Single-Compartment Tank Body
- 2007 PETERBILT 385, w/1995 Weld-It 4,500 Gal. Single-Compartment Tank Body
- 2007 PETERBILT 385, w/1993 Weld-It 4,500 Gal. Single-Compartment Tank Body
- 2007 PETERBILT 379, w/1990 Beall 4,600 Gal. Single-Compartment Tank Body
- 1999 PETERBILT 385, w/1993 Weld-It 4,500 Gal. Single-Compartment Tank Body



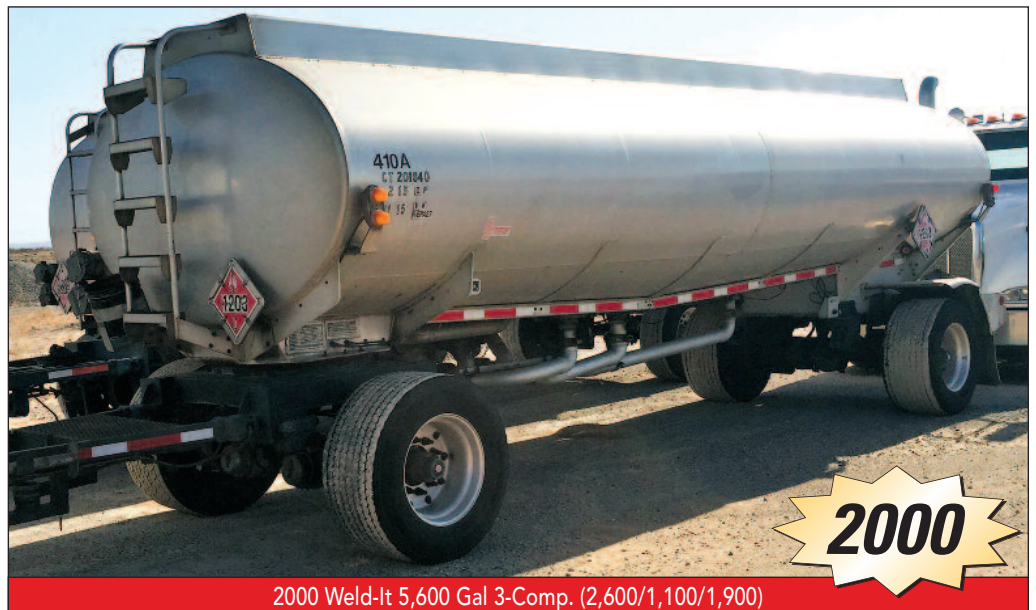
2007 Peterbilt w/ 1993 Weld-It 4,500 Gal Single-Comp. Tank Body

## PULL TANK TRAILERS

- 2007 WELD-IT 5,600 GAL. PULL TANK TRAILER, 3-Compartment (2,600/1,100/1,900) Elliptical 2-Axle
- 2000 WELD-IT 5,600 GAL. PULL TANK TRAILER, 3-Compartment (2,600/1,100/1,900) Elliptical 2-Axle
- 2000 WELD-IT 5,516 GAL. PULL TANK TRAILER, 2-Compartment (1,824/3,692) Elliptical 2-Axle
- 1999 WELD-IT 5,600 GAL. PULL TANK TRAILER, 3-Compartment (2,600/1,100/1,900) Elliptical 2-Axle
- 1997 WELD-IT 5,500 GAL. PULL TANK TRAILER, 3-Compartment (2,050/1,300/2,150) Elliptical 2-Axle
- 1997 FREUHAUF 6,600 GAL. PULL TANK TRAILER, 3-Compartment (3,500/2,000/1,100) Elliptical T/A
- 1996 WELD-IT 5,600 GAL. PULL TANK TRAILER, 3-Compartment (2,600/1,100/1,900) Elliptical 2-Axle
- 1990 BEALL 5,300 GAL. PULL TANK TRAILER, 3-Compartment (1,850/1,100/2,350) Elliptical 2-Axle
- (2) 1989 FREUHAUF 5,100 GAL. PULL TANK TRAILERS, 3-Compartment (1,900/1,200/2,000) Elliptical 2-Axle

## SEMI TANK TRAILERS

- 2000 HEIL 9,500 GAL. SEMI TANK TRAILER, 4-Compartment (4,000/1,100/1,400/3,000) Elliptical T/A



2000 Weld-It 5,600 Gal 3-Comp. (2,600/1,100/1,900)



# AUCTION #2: Global Webcast

Sale in Conjunction with



## Thursday, October 5th at 10:00am CDT

PREVIEW: Mon., October 2nd thru Wed., October 4th, 9:00am to 4:00pm Each Day or By Appointment

LOCATIONS: 1253 Hwy 97 East, Gonzalez, TX; 2651 Hwy 72, Three Rivers, TX; 782 Joe Garcia Ln, Asherton, TX; 335 Industrial Park Rd, Fairfield, TX & 19163 TX Hwy 7, Marquez, TX

### TRUCK TRACTORS

- (85) 2013 PETERBILT 388 TRUCK TRACTORS, Conventional Cab, Conversion to Westport GX 15-Liter Engine LNG/Diesel Engine, 475 HP, Eaton Fuller 10-Speed Manual Transmission, 46,000 LB Cap. Dana Spicer Tandem Drive Axles, Airtrac Suspension, NVE or Fruitland Vac Pump, Low Miles
- 2011 MACK CHU613 WINCHTRUCK, Conventional Cab, Fruitland Vac Pump, Mack MP8 Diesel Engine, Maxi Torque Transmission



**85 Available**



Views of Peterbilt 388 Truck Tractors



Views of Peterbilt 388 Truck Tractors



Mack CHU613 Winch Truck

Sale in Conjunction with



## FRAC TANKS

- APPROX. (300) FRAC TANKS, Dragon Products, Corrugated Steel Wall, Epoxy Lining, 500 Barrel Capacity, Single Axle
- APPROX. (20) ACID FRAC TANKS, Dragon Products, Corrugated Steel Wall, 4-Port Manifold, Single Axle
- APPROX. (20) GAS BUSTER FRAC TANKS, Dragon Products, 6' Corrugated Steel Wall, Open Top, Single Axle



**340 Available**



Views of Frac Tanks

## VACUUM TRAILERS

- (61) 2012 DRAGON PRODUCTS VACUUM TRAILERS, 130 BBL, Tandem Axle, Scubber Pot, Safety Valves, Hoses
- (24) 2013 GALYEAN VACUUM TRAILERS, 130 BBL, Tandem Axle, Scubber Pot, Safety Valves, Hoses



**61 Available**

Dragon Products Vacuum Trailer



**24 Available**

Galyean Vacuum Trailer



# AUCTION #2: October 5th – (5) Locations in TX

Green Energy  
Oilfield Services, LLC

Sale in Conjunction with



## PICKUP TRUCKS

- 2012 FORD F-250 SUPER DUTY, Crew Cab, 4x4
- 2012 FORD F-350 FLATBED, Crew Cab
- (3) 2012 DODGE RAM 2500 HD, Crew Cab, 4x4
- 2011 CHEVY 2500HD, Ext Cab
- (2) 2009 FORD F-350 FLATBED, Crew Cab



Various Pickup & Service Trucks



2012 Ford F-250 Super Duty Pickup Truck



2012 Ford F-350 Flatbed Service Truck

**2012**



**2012**

**1 of 3**

Dodge Ram 2500 HD Pickup Truck



**2011**

Chevy 2500HD Pickup Truck



**2009**

**1 of 2**

Ford F-350 Flatbed Pickup Truck

## MISCELLANEOUS EQUIPMENT

- 2012 TRANSCRAFT DROP DECK TRAILER, 53', 2-Axle
- 2001 FONTAINE FLATBED TRAILER, 48', Aluminum, 2-Axle
- TETON 12' X 60' BUNK HOUSE, Sleeps 10
- (2) PERFORMANCE POWER WASH TRAILERS

- KUBOTA ZD331 RIDING MOWER
- UTILITY TRAILERS
- ASSORTED POLY STORAGE TANKS
- LARGE QUANTITY OF TRUCK PARTS, SUPPLIES, HOSES, TIRES, ETC.

- (3) 40' STORAGE CONTAINERS
- SHOP TOOLS, AIR COMPRESSORS, TOOL CABINETS
- OFFICE FURNITURE & MORE!



Teton 12' x 60' Bunk House

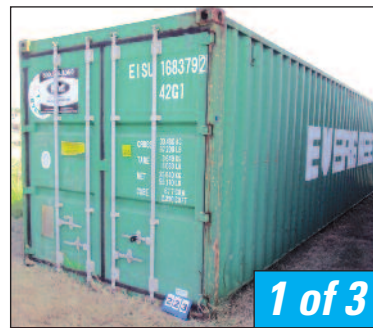


Kubota ZD331 Riding Mower



**1 of 2**

(2) Performance Power Wash Trailers



**1 of 3**

(3) 40' Storage Containers



# AUCTION #3: Global Webcast

Tuesday, October 10th at 10:00am EDT

PREVIEW: Monday, October 9th, from 9:00am to 4:00pm or By Appointment

LOCATION: 800 South Outer Drive, Saginaw, MI

## TRACTORS

• (30) 2010-2004 FREIGHTLINER COLUMBIA TRACTORS, Detroit Diesel Engine, 10 Speed Transmission, Dual Axle, DOT Specs, Sleeper Cabs



**30 Available**

As Late As  
**2010**

View of Freightliner Columbia Tractors

## TRAILERS

- (4) 2007-2006 GREAT DANE REEFER TRAILERS, 53' x 102", Air Ride
- (15) 2007-2001 MANAC 8-AXLE VAN TRAILERS, 50' x 102"
- (4) 2008 DORSEY 8-AXLE VAN TRAILERS, 50' x 102"
- (5) 2000-1996 TRAILMOBILE 6-AXLE VAN TRAILERS, 50' x 102"
- 2002 MANAC 6 AXLE VAN TRAILER, 50' x 102"
- 1995 PINES 6-AXLE VAN TRAILER, 50' x 102"
- (3) 2008-2005 TRAILMOBILE VAN TRAILERS, 53'

Complete Photos & Lot Listings at:  
[www.biditup.com](http://www.biditup.com)

1 of 4



As Late As  
**2007**

Great Dane Reefer Trailer

1 of 15



As Late As  
**2017**

Manac 8-Axle Van Trailer



**33 Available**

As Late As  
**2007**

View of Trailers

# FOR SALE BY PRIVATE NEGOTIATION ONLY

For Information Call Mike McIntosh at 647.828.8895 or email: mmcintosh@maynards.com

## 2014 PCI M1400HP NGU-95-4000 HIGH PRESSURE NITROGEN GENERATING UNIT:

- 4,000PSI Output Pressure
- 1400SCFM Output Flow
- 95% Gaseous Nitrogen
- 24V DC Control Power
- 120/240 VAC Aux Power
- (2) Atlas Copco Hurricane SB3244 Compressor w/CAT C32 Acert 1124HP Diesel Engines
- SPX Flow-Through Booster Mounted to Anderson Tri-Axle Trailer, S/N 8140400240

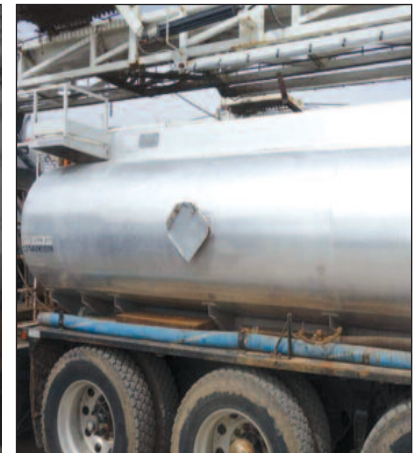


## (3) 2013 FREIGHTLINER 122 SD TRI-DRIVE FLUSH-BY-UNITS

**2013 FREIGHTLINER 122 SD TRI-DRIVE FLUSH-BY-UNIT** Detroit Mdl: DD15 Engine, Eaton 18 Speed Transmission, 188,773 KMS, 11,168 Engine Hrs., 20,000 lb Front Axle, 425/65R22.5 Front Tires - 75% Tread Left, 47,550 lb Rear Axles, Full Locking Axles, 11R24.5 Rear Tires - 75% Tread Left, All On Aluminum Wheels, Airliner Air Ride Suspension, C/W: SS Flush-By Unit, S/N: 12-0105, 54 ft. Height Mast, Free Standing, Slant Capabilities, Rod Board, Pull Master Mdl: HL-25 Working Winch, Pull Master Mdl: PL-5 Cat Line Winch, Drop Box, P.T.O., 4" Hydraulic Drive Load Pump, 3x5 Gardner Denver Mdl: Tee Triplex Pump, 5000 PSI, 2012 Innocar Ind., 2 Compartment Aluminum Tank, S/N: 11073, Hydraulic Tank/8m3 Product Compartment, TC406 Code, Fassi Mdl: M30A.13 Folding Crane, S/N: 0304-2099, Crane Smart Crown Saver, Weight Indicator, Plumbed At The Rear For BOP's & Tongs, Finch Mdl: 5332 Level Monitors, Hydraulic Rod Tongs, Rod Elevators, Rod Wrenches, 3" BOP's, Hand Tools, Tool Boxes, Hoses & Fittings. All Certifications Are Up To Date & Current. S/N 1FVPGNDR4DDBY8186, *(Located in Lubbock, Texas)*

**2013 FREIGHTLINER 122 SD TRI-DRIVE FLUSH-BY-UNIT** Mdl: DD15 560 HP Engine, Eaton 18 Speed Transmission, 134,696 KMS, 6,024 Engine Hrs., Full Locking Rear Axles, 20,000 lb Front Axle, 425/65R22.5 Front Tires - 75% Tread Left, 47,550 lb Rear Axles, 11R24.5 Rear Tires - 75% Tread Left, All On Aluminum Wheels, Airliner Air Ride Suspension, C/W: SS Flush-By Unit, S/N: 13-0124, 54 ft. Nominal Height Mast, Free Standing, Slant Capabilities, Rod Board, Pull Master Mdl: HL-25 Working Winch, Pull Master Mdl: PL-5 Cat Line Winch, Drop Box, 4" Hydraulic Drive Load Pump, 3x5 Gardner Denver Mdl: Tee Triplex Pump, 5000 PSI, 2012 Innocar Ind., 2 Compartment Aluminum Tank, S/N: 11161, Hydraulic Tank/8m3 Product Compartment, TC406 Code, Fassi Mdl: M30A.13 Folding Crane, S/N: 0304-2267, Crane Smart Crown Saver, Weight Indicator, Plumbed At The Rear For BOP's & Tongs, Finch Mdl: 5332 Level Monitors, Hydraulic Rod Tongs, Rod Elevators, Rod Wrenches, 3" BOP's, Hand Tools, Tool Boxes, Hoses & Fittings. All Certifications Are Up To Date & Current. S/N 1FVPGNDR8DDBN7667, *(Located in Lubbock, Texas)*

**2013 FREIGHTLINER 122 SD TRI-DRIVE FLUSH-BY-UNIT** Mdl: DD15 560 HP Engine, Eaton 18 Speed Transmission, 81086 KMS, 6,994 Engine Hrs., Full Locking Rear Axles, 20,000 lb Front Axle, 425/65R22.5 Front Tires - 75% Tread Left, 47,550 lb Rear Axles, 11R24.5 Rear Tires - 75% Tread Left, All On Aluminum Wheels, Airliner Air Ride Suspension, C/W: SS Flush-By Unit, S/N: 13-0131, 54 ft. Nominal Height Mast, Free Standing, Slant Capabilities, Rod Board, Pull Master Mdl: HL-25 Working Winch, Pull Master Mdl: PL-5 Cat Line Winch, Drop Box, P.T.O., 4" Hydraulic Drive Load Pump, 3x5 Gardner Denver Mdl: Tee Triplex Pump, 5000 PSI, 2012 Innocar Ind., 2 Compartment Aluminum Tank, S/N: 11258, Hydraulic Tank/8m3 Product Compartment, TC406 Code, Fassi Mdl: M30A.13 Folding Crane, S/N: N/A, Crane Smart Crown Saver, Weight Indicator, Plumbed At The Rear For BOP's & Tongs, Finch Mdl: 5332 Level Monitors, B.J. Hydraulic Rod Tongs, Rod Elevators, Rod Wrenches, 3" BOP's, Hand Tools, Tool Boxes, Hoses & Fittings. All Certifications Are Up To Date & Current. S/N 1FVPGNDR2DDBY8185, *(Located in Lubbock, Texas)*



## 2015 IHC 5900SBA TRI-DRIVE FLUSH-BY-UNIT

**2015 IHC 5900SBA TRI-DRIVE FLUSH-BY-UNIT CUMMINS** Mdl: ISX15 500 HP Engine, Eaton Mdl: 8LL 10 Speed Transmission, 69,000 lb Rear Axles, 94,296 KMS, 4920 Engine Hrs, 2010 PTO Hrs., Full Locking Rear Diff's, 14,600 lb Front Axle, 425/64R22.5 Front Tires - 75% Tread Left, 11R24.5 Rear Tires - 75% Tread Left, All On Aluminum Wheels, New Way Air Ride Suspension, C/W: Online Rig & Equipment Flush-By Unit, 50 ft. Nominal Height Mast, Free Standing, No Slant Capabilities, Pull Master Mdl: HL-25 Working Winch, Pull Master Mdl: PL-5 Cat Line Winch, 3x5 Gardner Denver Mdl: PE5Y Triplex Pump, 5000 PSI, 1997 Wabash 10 m3 Tank Recertified In 2002, Refurbished in 2014, TC 306 Crude Spec, 08/14 VIPKT, Fassi Mdl: M30A.13 Folding Crane, Crane Smart Crown Saver, Weight Indicator, Plumbed At The Rear For BOP's & Tongs, Finch Mdl: 5332 Level Monitors, Rod Elevators, Rod Wrenches, Hand Tools, Tool Boxes, Hoses & Fittings. All Certifications Are Up To Date & Current. S/N 3HTNWAPT4FN071764, *(Located in Lloydminster, Alberta, Canada)*



2015

# 3 AUCTIONS

UNPRECEDENTED OFFERING OF FUEL-FRAC-VACUUM-TRUCKS-TRAILERS & RIGS

**AUCTION #1: Oct. 3**  
Onsite & Global Webcast



**Unprecedented Multi-Million Dollar Offering of a Late Model Fuel Transportation Fleet as New as 2014**

**AUCTION #2: Oct. 5**  
Global Webcast

By Order of Secured Creditor



**Green Energy Oilfield Services, LLC**

**(80+) Peterbilt Tractors & Winch Trucks, (350+) Dragon Frac Tanks & (150+) Vac Trailers**

**AUCTION #3: Oct. 10**  
Global Webcast

Former Assets of:



**(30) Freightliner Columbia Tractors & (33) Great Dane, Manac, Dorsey, Trailmobile and Pines Trailers**

## BIDITUP

BIDITUP AUCTIONS WORLDWIDE  
AN INDUSTRIAL ASSETS COMPANY

11426 Ventura Boulevard  
Studio City, California 91604  
Phone: 818.508.7034  
Fax: 818.508.3025  
info@biditup.com



**MACHINERY AUCTION, LOOK INSIDE!**

**ATTENTION: PLANT MANAGER OR EQUIPMENT BUYER**

# 3 AUCTIONS

UNPRECEDENTED OFFERING OF FUEL-FRAC-VACUUM-TRUCKS-TRAILERS & RIGS

**AUCTION #1: October 3**  
Onsite & Global Webcast

**AUCTION #2: October 5**  
Global Webcast

**AUCTION #3: October 10**  
Global Webcast

## UPCOMING AUCTION CALENDAR

WASATCH - COMPLETE CONTENTS FROM AN ENERGY RECOVERY FACILITY waste management district	WASATCH - COMPLETE CONTENTS FROM AN ENERGY RECOVERY FACILITY Tuesday, September 19 at 10:00am (MDT) • Location: 3404 N 650 E, Layton, UT	<b>ONSITE &amp; WEBCAST</b>
MCSWAIN MANUFACTURING - LARGE CAPACITY PRECISION MACHINING FACILITY	MCSWAIN MANUFACTURING - LARGE CAPACITY PRECISION MACHINING FACILITY Tuesday, September 26 at 10:00am (EDT) • Location: 382 Circle Freeway Dr., Cincinnati, OH	<b>ONSITE &amp; WEBCAST</b>
MCSWAIN MANUFACTURING - 46,000 S.F. MANUFACTURING WAREHOUSE & OFFICES	MCSWAIN MANUFACTURING - 46,000 S.F. MANUFACTURING WAREHOUSE & OFFICES Tuesday, September 26 at 10:00am (EDT) • Location: 382 Circle Freeway Dr., Cincinnati, OH	<b>REAL ESTATE</b>
RF MACHINING - COMPLETE GEAR SHOP: CNC TURNING, CNC MACHINING, SHAPERS	RF MACHINING - COMPLETE GEAR SHOP: CNC TURNING, CNC MACHINING, SHAPERS Thursday, October 12 at 10:00am (EDT) • Location: 820 Cochran St., Statesville, NC	<b>ONSITE &amp; WEBCAST</b>
HURLEY COMPANIES - ROTARY PULP MOLDER & CORRUGATED PACKAGING EQUIPMENT	HURLEY COMPANIES - ROTARY PULP MOLDER & CORRUGATED PACKAGING EQUIPMENT Thursday, October 19 at 10:00am (CDT) • Location: 2902 E Municipal Dr., Lubbock, TX	<b>GLOBAL WEBCAST</b>
SPECTRUM GLASS CO., INC - MANUFACTURER OF SPECIALTY SHEET GLASS	SPECTRUM GLASS CO., INC - MANUFACTURER OF SPECIALTY SHEET GLASS TBD - October • Location: 24105 Woodinville Snohomish Rd., Woodinville, WA	<b>ONSITE &amp; WEBCAST</b>

FOR THE COMPLETE TERMS & CONDITIONS OF THE FEATURED AUCTION  
Please visit our website [www.BIDITUP.com](http://www.BIDITUP.com)

Thinking of having an auction or need an appraisal?  
Call us at 818.508.7034



818.508.7034  
[www.biditup.com](http://www.biditup.com)



248.569.9781  
[www.maynards.com](http://www.maynards.com)