



INDUSTRIAL ASSETS

REAL ESTATE • FINANCE • MACHINERY • AUCTIONS
industrialassets.com

**2-DAY GLOBAL
ONLINE ONLY
LIVE WEBCAST**
(NO ONSITE BIDDING)

AUCTION

2-DAY AUCTION: Weds. & Thurs., June 19th & 20th at 8am (PDT) Each Day

PREVIEW LOCATION: 4800 Mill Street, West Linn, OR 97068

PREVIEW: Mon. & Tue., June 17th & 18th, 9am to 4pm or By Appointment



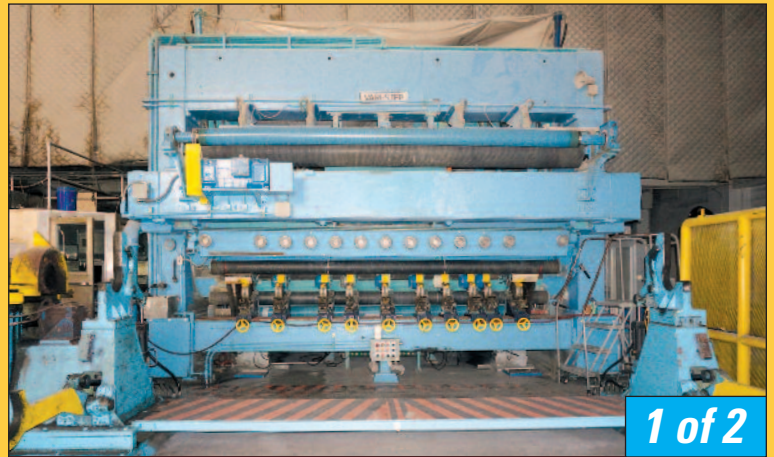
COMPLETE WEST LINN PAPER MILL

FEATURING: (3) Complete Fourdrinier Paper Machines, Coating Plant, Stock Preparation System, Pumps, Valves, Screens, Supercalenders, Jagenberg Vari-Step Slitter Rewinders, Lamb-Grey's Roll Wrapping Line, 65" Maxson Sheeter, Lab Equip., Store Rooms, Tool Rooms, Electrical MCC's & Distribution, Machine Shops, Rolling Stock & Much More...

*Over
2,000 Lots!*



158" (4.00m) Beloit Fourdrinier Paper Machine 250-350 TPD



1 of 2

144" Trim Jagenberg Vari-Step Two Drum Slitter Rewinder 6,500 FPM



1 of 2

(2) 34" Sprout-Bauer Twin-Flo Refiners (1250HP)



*Late
Model*

Nash 904 and CL Series Vacuum Pumps

Complete Photos & Lot Listings at www.biditup.com



BIDITUP
BIDITUP AUCTIONS WORLDWIDE
AN INDUSTRIAL ASSETS COMPANY

818.508.7034
www.biditup.com

Maynards
SINCE 1902

248.569.9781
www.maynards.com

PAPER MACHINE #3

158" (4.00M) BELOIT FOURDRINIER PAPER MACHINE 250- 350 TPD REBUILT 2001, 160" VOITH MASTER JET F DILUTION HEADBOX W/FOURDRINIER TABLE, (3) PRESS SECTIONS 750 PSI, (33) 60" DIAMETER DRYER CANS, (2) ROLL KUSTER CALANDER STACK, (2) WARTSILA COATERS, (2) IR BURNERS, BLACK CLAWSON HORIZONTAL REEL TO SUPERCALENDERS / WINDERS

Basis weights range from 45 to 80 lb (per 3300 sq ft.), Coat weights range from 2.5 to 24 lbs, depending on grade, Speeds range from 1400 ft/min to 2000 ft/min, depending on grade. Voith Sulzer primary multi-screen with Black Clawson P12 secondary screen with Voith size 0 mini sorter. Five stage GL & V 700 centrifugal system. Voith MSA 15/15 primary screen and BC 24P secondary screen. Wet end controlled by ABB and Delta V DCS system. 159.7" pond width and 63 zone dilution profiling. Suction pick up. Press 1 and 2 rated 350 PLI and 3rd press rated 750 PLI. Two trailing blade coaters with IR burners after each station and Overly dryers. Wartsila Horizontal track reel. Vacuum pumps installed in 2006.



158" (4.00m) Beloit Fourdrinier Paper Machine w/Upgrades



144" Bruderhaus Supercalender No. 4



Five-Stage GL&V/Celleco Cleaning System



(3) Heavy Duty Press Sections



Two-Roll Kuster Controlled Crown Calander Stack



144" Trim Wartsila Slitter Rewinder No. 4



60" Diameter Dryer Can Section



160" Voith Master Jet F Dilution Headbox

PAPER MACHINE #1

155" (3.90M) BELOIT FOURDRINIER PAPER MACHINE 300 - 410 TPD, 155" ESCHER WYSS SEW STEP DIFFUSER HEADBOX W/FOURDRINIER TABLE, (2) PRESS SECTIONS 600 PLI, 35 CAN DRYER SECTION (48" DIAMETER), PAPERCHINE COATING SYSTEM (2017), SPOONER AIR DRYER, ABB SCANNERS, BELOIT REEL TO SUPERCALENDERS / WINDERS

Basis weight ranges from 70 to 148 lb (per 3300 sq ft) speeds range from 850 ft/min. to 1725 ft/min, depending on grade, produced standard offset C2S grades, plus C1S, Fragrance and Playing Card Turbine driven line shaft and sectional drives. (3) Black Clawson slotted screens. Five stage GL & V cleaner system. (3) stage Voith screens for thin screening. Sultzer Esher Wyss Step diffuser headbox with Devron CD actuators. Two straight through presses with 260 PLI and 600 PLI respectively, crown control roll installed 2011 on the 2nd press. Smoothing press after second press. Esher Wyss nipco calendar stack. Paperchine RMSP is used as a precoater for all grades (installed 2005). Spooner air dryer. Voith Jet Flow coating heads installed in 2015. Paperchine 12 camera Webvision system installed 2017, Beloit horizontal track reel with turn up system.



155" (3.90m) Beloit Fourdrinier Paper Machine



Spooner Air Dryer



144" Trim Beloit 10 Roll Calendar Stack



5th Dryer Section



144" Trim Jagenberg Slitter Rewinder



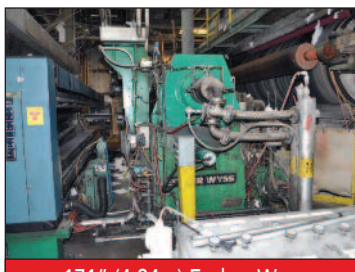
Paperchine RMSP Precoating System



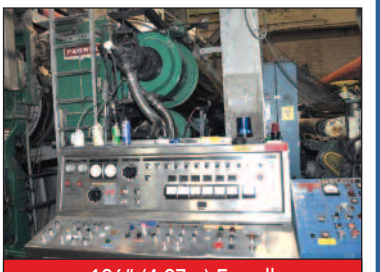
ABB Scanner

CALENDAR STACKS

- 171" (4.34M) ESCHER WYSS 2-ROLL CALENDER STACK, 800 PLI
- 196" (4.97M) FARRELL 2-ROLL CALENDER STACK, 1,000 PLI



171" (4.34m) Escher Wyss



196" (4.97m) Farrell

PAPER MACHINE #2

161" (4.10M) BELOIT FOURDRINIER PAPER MACHINE 130 - 350 TPD, 161" GL&V DILUTION HEADBOX W/FOURDRINIER TABLE (INSTALLED 2016), (2) BELOIT PRESS SECTIONS 350 PLI, 29 CAN DRYER SECTION 60" DIAMETER, RICE BARTON & BELOIT COATING, BLACK CLAWSON AUTOFLYTE REEL TO SUPERCALENDERS/WINDERS

Runs standard offset C2S grades, plus C1S, InkJet, OGR and Wet Strength, Basis weight ranges from 22 to 80 lb (per 3300 sq ft.), with a sweet spot in the 45-60 lb range, Produces 120 grades with Book Matte, Dull, Dull-SG, Gloss, Matte, Smooth & Wove finishes. from 130 to 350 tons per day at the reel, Coat weights range from 2 to 19 lbs, depending on grade, speeds range from 1400 ft/min to 2100 ft/min. (2) Fan Pump stock approach system. GL & V M-50 primary screen and one Black Clawson 12P secondary screen. Four stage GL & V 700 centrifugal system. GL & V Dilution Headbox with BTF Central Distributor. Factory rebuilt and installed in 2016. 164.44" pond width with 48 dilution zones. 169" Fourdrinier with (8) multiple-foil drainage units. (5) 9-foil gravity boxes. (4) vacuum flat boxes with AES flat box vacuum control system. ABB and Delta V DCS control for the machine and wet end. Beloit twin press section with suction pick up. Voith Sulzer Nipco calender stack with 6 zone control. Two (2) trailing blade coater stations with (1) infrared burner following each blade. Cross-machine profile control. Papertech Webvision system with 10 cameras installed in 2017.



161" (4.10m) Beloit Fourdrinier Paper Machine



161" GL&V Dilution Headbox



Cascading Dryer Sections

**Complete Photos
& Lot Listings at
biditup.com**

CONVERTING AND ROLL HANDLING

- LAMB-GREY'S HARBOR CO. ROLL WRAP SYSTEM (RATED 1000 ROLLS PER DAY), 72" Maximum Width x 50" Maximum Diameter with Tuff Automation Roll Upender (2012)
- (4) SAUVANT AUTOMATIC GUIDED VEHICLE, AGV'S Roll Transport System
- 65" MAXSON MSL SHEETER, Roll Stand with Edge Guide, Tidland Slitting Section, 11" Knife Cylinder, Auto Squaring, Dual Motor Drive, 15" - 50" Sheet Length's



Lamb-Grey's Paper Roll Wrapping Line



65" Maxson MSL Sheeter



120" Appleton Core Cutter

STOCK PREPARATION SYSTEM

- (5) 26" SPROUT-BAUER TWIN-FLO REFINERS (400HP)
- (2) 34" SPROUT-BAUER TWIN-FLO REFINERS (1250HP)
- 34" SPROUT-BAUER TWIN-FLO REFINER (800HP)
- BLACK CLAWSON & JAMES BRINKLEY ROLL SPLITTERS
- BAUER HYDRASIEVES
- AES GRAVITY STRAINERS
- GL&V CLEANING BANKS
- VOITH MULTISCREEN
- BOLTON EMERSON CONTINUOUS TORNADO PULPER 400 HP
- (2) MORDEN CONTINUOUS EXTRACTORS 350 HP
- (2) BLACK CLAWSON DEFLAKERS
- NUMEROUS COATING & STAINLESS STEEL STORAGE TANKS
- FULLY AUTOMATED ABB DCS CONTROLS
- POSEIDON DAF CLARIFIER



Voith Multiscreen



Kadant Filter Bank



Centrifugal Pumps



26" Sprout-Bauer Twin-Flo Refiners (400HP)



Black Clawson Roll Splitter



Roll Splitter



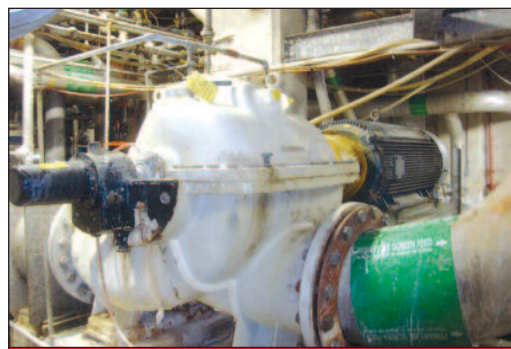
GL&V M-50 Headbox Screen



GL&V Cleaner System



Beloit Model 32-S Screen



Fan Pump



GL&V Screen



Sprout Waldron Refiners



AES Filters



Octopus System



Metso Instrumentation

SHOP EQUIPMENT, SPARES, TOOL, ELECTRICAL, LAB ROOMS, MISC & MORE...

- OVER 100 FULL STANLEY-VIDMAR SPARES CABINETS
- OVERHEAD BRIDGE CRANE SYSTEMS
- UPGRADED MCC ROOMS
- 100's OF SPARE MOTORS & PUMPS

- WELDERS, POWER TOOLS, HAND TOOLS
- LAB: TESTING, BALANCING, METERING EQUIPMENT
- SPARE BEARING
- SPARE NOZZLES

- SPARE TRANSMITTERS
- SPARE WIRE LOTS
- SPARE DRIVES
- SPARE ROLLS

**Over \$5 Million
Dollars of Spare
and Stores Room
Components!**



100's of Reconditioned and New Motors



Over 100 Full Stanley-Vidmar Cabinets



100's of Spare Pumps Parts



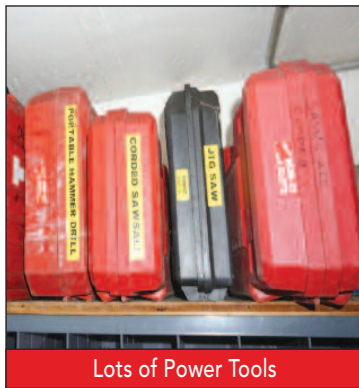
100's of Spare Valves & Instrumentation



American Roll Grinder



Stainless Steel Tanks



Lots of Power Tools



Many Reconditioned Spare Rolls



Lots of Bearings



MCC Rooms



5-Ton Hydramach Overhead Crane



904 T-2 Vacuum Pump

ROLLING STOCK: FORKLIFTS, ROLL CLAMP TRUCKS, SCISSOR LIFTS, ATTACHMENTS, INDUSTRIAL CARTS, GOLF CARTS & MORE...



15,000 Lb. Cap. CAT Forklift



12,000 Lb. Cap. Hyster Paper Roll Clamp Trucks



9,000 Lb. Cap. Roll Clamp Truck



Hyster 7,000 Lb. Cap. Forklifts



Yale Roll Clamp Truck



4-Ton & 9-Ton Broderson Cranes



4,000 Lb. Cap. Long Cart



Industrial Cart



United Rentals Scissor Lift



Tennant Floor Sweeper



72" Cascade Clamp



Cascade Paper Roll Clamp Attachments

2-DAY GLOBAL ONLINE
ONLY LIVE WEBCAST

AUCTION

June 19th & 20th
8:00am (PDT) Each Day



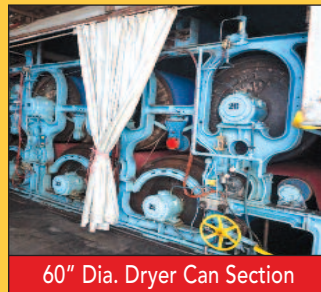
COMPLETE WEST LINN PAPER MILL



158" Beloit Fourdrinier Paper Machine



144" Bruderhaus Supercalender



60" Dia. Dryer Can Section



65" Maxson MSL Sheeter

BIDITUP

BIDITUP AUCTIONS WORLDWIDE
AN INDUSTRIAL ASSETS COMPANY

2301 Belgrave Avenue
Huntington Park, CA 90255
Phone: 818.508.7034
Fax: 818.508.3025
info@biditup.com

MACHINERY AUCTION, LOOK INSIDE!

**ATTENTION: PLANT MANAGER
OR EQUIPMENT BUYER**



SCAN QR CODE
TO SEE ALL INFORMATION
ABOUT THIS AUCTION!

2-Day Global Online Only Live Webcast Auction



2-DAY AUCTION: Weds. & Thurs., June 19th & 20th at 8:00am (PDT) Each Day
PREVIEW LOCATION: 4800 Mill Street, West Linn, OR 97068
PREVIEW: Mon. & Tue., June 17th & 18th, 9am to 4pm or By Appointment

**Over
2,000 Lots!**

**FEATURING: (3) Complete Fourdrinier Paper Machines, Coating Plant,
Stock Preparation System, Pumps, Valves, Screens, Supercalenders and Much More...**

LODGING

BEST WESTERN – (503) 655-7141
1900 Clackamette Dr., Oregon City, OR 97045
HOLIDAY INN EXPRESS – (503) 722-7777
75 82nd Dr, Gladstone, OR 97027

DIRECTIONS

PORTLAND INTERNATIONAL AIRPORT (PDX): Head northwest on NE Airport Way. Slight left to stay on NE Airport Way. Use the right 2 lanes to turn slightly right onto the Interstate 205 S ramp to Interstate 84/Portland/Salem. Merge onto I-205 S. Take exit 8 for State Route 43 toward W Linn/Lake Oswego. Turn left onto Willamette Dr. Turn right onto Mill St. Destination will be on the left.

ONLINE BIDDER INSTRUCTIONS: All internet bidders must register for this auction at least 72-hours prior to the sale date, if you do not you will not be approved. All internet bidders must provide a wire transfer deposit of approximately 25% of your planned spending amount or \$2,500 minimum, whichever is greater in order to be approved to bid. Those who do not post the deposit will not be approved. Period. Please refer to www.biditup.com for online bidder terms.

UPCOMING AUCTION CALENDAR

Proper Group

PROPER GROUP – Late Model, Large Capacity CNC Machining Equipment
Tuesday, May 21st at 11:00am EDT • Warren, MI & Anderson, SC

GLOBAL WEBCAST



VICOUNT INDUSTRIES INC. – Automotive & Aerospace Prototype & Mfg. Facility
Thursday, May 30th at 11:00am EDT • 24704 Hathaway St., Farmington Hills, MI

GLOBAL WEBCAST



CBM PRECISION MACHINING – Late Model Machining & Turning Facility
Tuesday, June 18th at 11:00am EDT • 411 N Grove Street, Berlin, NJ

GLOBAL WEBCAST

FOR THE COMPLETE TERMS & CONDITIONS OF THE FEATURED AUCTION
Please visit our website www.BIDITUP.com

Thinking of having an auction or need an appraisal?
Call us at 818.508.7034