

# AUCTION



## WEBCAST

Can't attend the auction in person?  
Bid live online at [www.BIDITUP.com](http://www.BIDITUP.com)

## HUGE 2-DAY AUCTION

Thursday & Friday, June 26 & 27 Beginning at 9:00am PDT Each Day

2921 Sutherland Rd., Union Gap (Yakima), WA 98903

Preview: Wednesday, June 25, 9:00am to 4:00pm PDT

*Formerly the Assets of:*

**WESTERN RECREATIONAL VEHICLES, INC.**

**Complete State of the Art Class A Motorcoach and  
5th Wheel Trailer Manufacturing Facility, Including  
Over (40) Completed Motorcoaches and 5th Wheel Trailers**

**OVER 3,000 LOTS  
Everything Sells!**



**FOR COMPLETE  
"SPECIFICATIONS"  
FOR COACHES  
AND TRAILERS,  
PLEASE VISIT  
OUR WEBSITE,  
[WWW.BIDITUP.COM](http://WWW.BIDITUP.COM)**

- ▶ (3) NEW FINISHED ALPINE COACHES
- ▶ (27) NEW ALPENLITE TRAVEL TRAILERS
- ▶ UNFINISHED COACHES & FIFTH WHEELS
- ▶ COACH & FIFTH WHEEL FABRICATION

- ▶ COACH & FIFTH WHEEL PARTS
- ▶ WOOD WORKING EQUIPMENT
- ▶ WELDING EQUIPMENT

- ▶ PAINT SYSTEMS
- ▶ AIR COMPRESSORS
- ▶ MATERIAL HANDLING

- ▶ VEHICLES
- ▶ FABRICATION
- ▶ SUPPORT EQUIPMENT

**BIDITUP WORLDWIDE: [www.biditup.com](http://www.biditup.com)**

# (3) NEW FINISHED ALPINE COACHES (27) NEW ALPENLITE FIFTH WHEEL TRAVEL TRAILERS

## (3) NEW FINISHED ALPINE COACHES

2009 LIMITED SE 36' FRONT DOOR TRIPLE SLIDE, DECOR: SILVER SATIN  
2009 LIMITED SE 34' FRONT DOOR DOUBLE SLIDE, DECOR: MILAN  
2009 LIMITED SE 34' FRONT DOOR DOUBLE SLIDE, DECOR: COSMOPOLITAN

## (27) NEW FIFTH WHEEL ALPENLITE TRAVEL TRAILERS

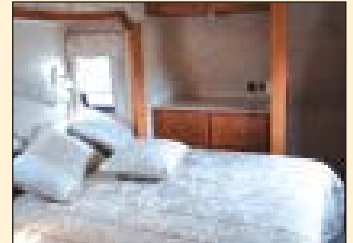
2007 ALPENLITE DEFENDER FIFTH WHEEL TRAVEL TRAILER  
ALPENLITE DEFENDER FIFTH WHEEL TRAVEL TRAILER, Floor Plan #3810SB  
ALPENLITE LIMITED FIFTH WHEEL TRAVEL TRAILER, Floor Plan #34  
ALPENLITE LIMITED FIFTH WHEEL TRAVEL TRAILER, Floor Plan #34CK  
(3) ALPENLITE LIMITED FIFTH WHEEL TRAVEL TRAILER, Floor Plan #34RL  
(3) ALPENLITE LIMITED FIFTH WHEEL TRAVEL TRAILER, Floor Plan #34RLR  
(10) ALPENLITE RIDGELINE FIFTH WHEEL TRAVEL TRAILER, Floor Plan #34  
ALPENLITE RIDGELINE FIFTH WHEEL TRAVEL TRAILER, Floor Plan #36RLSB  
(3) ALPENLITE VOYAGER FIFTH WHEEL TRAVEL TRAILER, Floor Plan #31CK  
ALPENLITE VOYAGER FIFTH WHEEL TRAVEL TRAILER, Floor Plan #31RK  
ALPENLITE VOYAGER FIFTH WHEEL TRAVEL TRAILER, Floor Plan #31RL  
ALPENLITE VOYAGER FIFTH WHEEL TRAVEL TRAILER, Floor Plan #3RLR



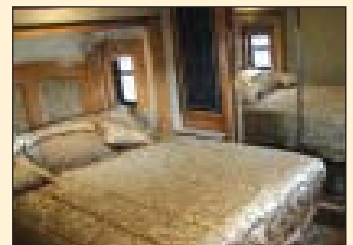
**VIEW OF ALPINE COACHES**

**FOR COMPLETE "SPECIFICATION LIST" FOR COACHES AND TRAILERS, PLEASE SEE SPEC SHEETS FOR EACH MODEL ON OUR WEBSITE, [WWW.BIDITUP.COM](http://WWW.BIDITUP.COM)**

### ALPENLITE DEFENDER FIFTH WHEEL TRAVEL TRAILER



### ALPENLITE LIMITED FIFTH WHEEL TRAVEL TRAILER

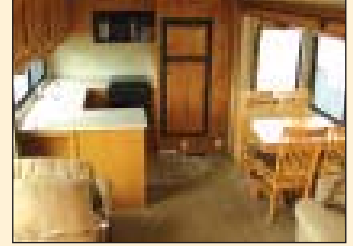


**OVER 3,000 LOTS  
Everything Sells!**



## (27) NEW ALPENLITE FIFTH WHEEL TRAVEL TRAILERS UNFINISHED COACHES & FIFTH WHEELS

### ALPENLITE VOYAGER FIFTH WHEEL TRAVEL TRAILER



### ALPENLITE RIDGELINE FIFTH WHEEL TRAVEL TRAILER



### UNFINISHED COACHES & FIFTH WHEELS

**(10) INCOMPLETE ALPENLITE FIFTH WHEEL TRAVEL TRAILERS.** (These units are unfinished and will be offered at auction by the separate components, M.S.O.'s will not be provided for these units.)

**(8) ALPINE MOTOR COACHES,** w/Cummins ISL 425 8.9 Liter Engine, Allison 3000MH 6 Speed Push Button Automatic Transmission, 8.0 KW Onan Quiet Diesel Generator, Aluminum Wheels, Meritor Front & Rear Axles, Electrical Systems, Hydraulic Systems, LCD Televisions, Refrigerators, Washer/Dryers, Stereo Systems, Satellite Systems, Furnishings, Control Systems and Shells. (These units are unfinished and will be offered at auction by the separate components, M.S.O.'s will not be provided for these units.)

**(6) PEAK MOTOR COACH CHASSIS'** w/Cummins ISL 425 8.9 Liter Engine, Allison 3000MH 6 Speed Push Button Automatic Transmission, 8.0 KW Onan Quiet Diesel Generator, Aluminum Wheels, Meritor Front & Rear Axles, Electrical Systems, Hydraulic Systems. (These units are unfinished and will be offered at auction by the separate components, M.S.O.'s will not be provided for these units.)

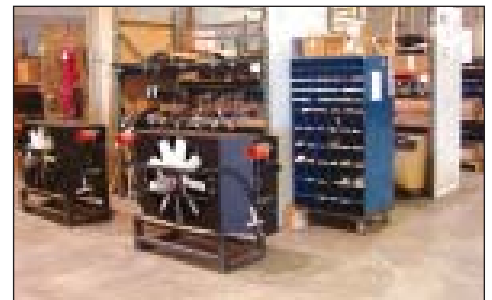
**WORKHORSE "PUSHER" CHASSIS,** w/Chevrolet 8.1 Liter Engine, Front and Rear Axles, Allison Automatic Transmission, Aluminum Wheels & Tires, Electrical System. (This unit is unfinished and will be offered at auction by the separate components, M.S.O.'s will not be provided for this unit.)



View of Trailers

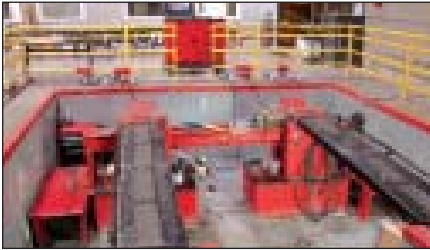


Workhorse "Pusher" Chassis



Chassis Inventory

# COACH & FIFTH WHEEL FABRICATION • COACH & FIFTH WHEEL PARTS WOOD WORKING EQUIPMENT



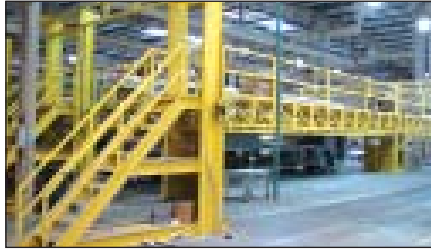
Hunter Digital Four Wheel Alignment System



Fifth Wheel Axles



10' X 85' Fifth Wheel Assembly Scaffold System



Double Bay Hydraulic Motor Coach Assembly Scaffold



(10) Onan Quiet Diesel 8000 Generators



Aluminum Extrusion



(2) Ritter Face Frame Assembly Tables



Ritter Horizontal Edgebelt Sander



Ritter Face Frame Pocket Borer



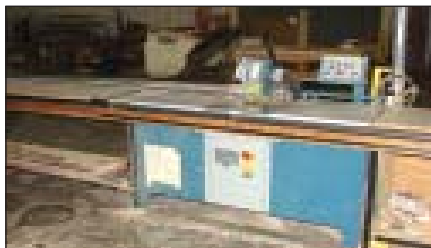
Multicam CNC Router



Grizzly Edge Belt Sander



Panel Saw



Fast Framer Automatic Framing Saw & Drill

## COACH & FIFTH WHEEL FABRICATION

DOUBLE BAY HYDRAULIC MOTOR COACH ASSEMBLY SCAFFOLD, (2) 9' 6" X 50' Bays, Photo-Electric Safety System  
10' X 85' FIFTH WHEEL ASSEMBLY SCAFFOLD SYSTEM  
(75) SHEETS 102" X 34'6" CRANE COMPOSITE SIDING MATERIAL  
ALPINE COACH, ALPENLITE FRONT & REAR CAPS  
WIRE LOOM JIGS  
FIFTH WHEEL & TAG TRAILER AXLE ASSEMBLIES  
HUNTER DIGITAL FOUR WHEEL ALIGNMENT SYSTEM, M# P111, S/N FH2349  
ASSEMBLY JIGS & FIXTURES

## COACH & FIFTH WHEEL PARTS

(10) ONAN QUIET DIESEL 8000 GENERATORS, M# 8HDKAK-1046K, 66.7 Amp, 8 KVA • ONAN MARQUIS GOLD 5500 GENERATOR • ALUMINUM EXTRUSION, w/Racks • DOMETIC & AMANA MICROWAVE OVENS, RV REFRIGERATORS, ROOF TOP AIR UNITS • CABINETRY & HARDWARE • CARPET • LAMINATE & TILE FLOORING • COASTAL INDUSTRIES, FRONTLINE & SEA SHOWER DOORS & ENCLOSURES • COUNTER TOPS • DOMETIC AWNINGS & HARDWARE • ELECTRICAL WIRE • FABRIC • FILON MEDALLION "A" GRADE FIBER GLASS COILS • FIRESTONE AIR SPRINGS • FLEXSTEEL RV COUCHES & CHAIRS • HWH SLIDE-OUT SLIDES & POWER UNITS • KENMORE WASHER/ DRYER UNITS • KING DOME SATELLITE SYSTEMS • KWIKEE STEPS & JACKS • REESE FIFTH WHEEL HITCHES • REYCO GRANNING & HOLLAND SUSPENSION SYSTEMS • SE-GI PRODUCTS RV WINDOWS • STYROFOAM INSULATION • SUBURBAN RANGE TOPS & OVENS • TIRES, WHEELS • TOSHIBA, WESTINGHOUSE, ZENITH, DIAMANDUO FLAT PANEL LCD TV'S • TRIM-LOK TRIM & SEAL MATERIAL • VOYAGER CAMERA SYSTEMS • XANTREX POWER INVERTERS • LARGE INVENTORY OF CHASSIS AND DRIVE TRAIN SPARE PARTS • MANCHESTER PROPANE TANKS • MATTRESSES • MAXXFAN VENTILATORS • PIONEER & KENWOOD STEREO SYSTEMS

## WOOD WORKING EQUIPMENT

MULTICAM CNC ROUTER, M# MG Series, S/N MG20703193, 10 H.P., 24,000 RPM, 61" X 194" Table, (68" between columns, 7 1/2" below gantry), (4) Station Divided Vacuum Hold Down, (8) Station A.T.C., w/Multicam Teach Pendant, Computer W/ AlphaCam 2003 Software, Wireless RS232 Connection, TV 425 Vacuum System, 220 Volt/50 Amp

(2) RITTER FACE FRAME ASSEMBLY TABLES, M# R-200, S/N's 3044, 1846 w/(2) Beams & (10) Pneumatic Hold-Downs, 60" X 144" Easel Area

25 H.P. CYCLONE DUST COLLECTION SYSTEM

SUPERIOR SYSTEMS 40 H.P. DUST COLLECTION SYSTEM

69" X 122" HYDRAULIC GLUE PRESS

C.R. ONSRUD 1/2" INVERTED ROUTER, M# 3025, S/N 9330842

CMT PANEL SAW, M# 459-8H, S/N 409283F1, 100" X 4" Cap., 8' 6" Squaring Arm, w/Clamping Gauge, Pneumatic Hold-Down.

CUSTOM MACHINE DESIGN HOT WIRE FOAM CUTTING MACHINE, M# M104

DELTA MITER SAW

FAST FRAMER AUTOMATIC FRAMING SAW & DRILL, M# V85, S/N V85-081, w/Quik Clamp Stop Arm

INDUSTRIAL PNEUMATIC JUMP SAW, S/N N510R-1-163698

LUMBER

MILWAUKEE, DEWALT, MAKITA, DELTA, ROCKWELL MITER SAWS, VERTICAL BAND SAWS, DRILL PRESSES, TABLE SAWS, PEDESTAL GRINDERS, BELT SANDERS, ROUTER TABLES

PF CUTTING AUTOMATIC FRAMING SAW, M# PF90, PC Controlled PLYWOOD

RITTER FACE FRAME POCKET BORER, M# R200T, S/N 3984, 14 Degree Screw Pocket, 24" X 30" Table, 1 1/2 H.P.

RITTER HORIZONTAL EDGEBELT SANDER, M# R-700, S/N 4967, 4" X 132" Belt, Dual Platen

RITTER HORIZONTAL EDGEBELT SANDERS, M# R-701, S/N 7934, 4" X 132" Belt, Dual Platen

ROSS & COOK 25 HP DUST COLLECTION SYSTEM, Combo M# BSE-825-PJ, S/N RC30DCFBPJ-99-S-0012

**WELDING**

(2) MILLER REGENCY 250 WELDING POWER SUPPLIES, w/Miller WC-24 Aluminum Mini Spool Gun, S/N's LC238698, LC522802  
 (2) MILLER REGENCY 250 WELDING SUPPLIES, w/Miller XR-A Extended Reach Feeder w/Aluminum Spool Gun, S/N's K424855, LC674350  
 LINCOLN CV-300 WELDING POWER SUPPLY, w/Lincoln LN-7 Wire Feeder  
 MILLER CP-300 WELDING POWER SUPPLY, w/Miller JA-35 Wire Feeder, S/N KA748283  
 MILLER CP302 WELDING POWER SUPPLY  
 MILLER MIG WELDER, M# Vintage, S/N KH349874  
 MILLER MILLERMATIC 200 MIG WELDER, S/N KB073038  
 MILLER SPOOL MATE 200 WELDING SUPPLY, w/Miller WC-24 Aluminum Mini Spool Gun, S/N JC61331  
 MILLERMATIC 200 MIG WELDER, S/N KB073078  
 MILLER CP-300 WELDING POWER SUPPLY, S/N KB120901, w/Miller JD-42 Wire Feeder  
 OXY/ACY TORCH SETS, w/Carts

**WELDING TABLES**

**PAINT SYSTEMS**

(4) SPRAY SYSTEMS INC., AIR FILTRATION SYSTEMS 15' X 15' X 50' PAINT SPRAY BOOTHS, (3) w/Banza Heater Filtration, (1) Down Draft Style, w/Devilbiss Desiccant Air Dryer Systems  
 6' X 7' AIR FILTRATION PAINT MIXING ROOM, w/Ventilation & Gun Cleaning Station  
 AIR FILTRATION COMPANY, CUSTOM AIRE REVERSED AIR FLOW AUTO SPRAY BOOTH, 15' Wide X 50' Long X 9' 6" Tall, M# ARA-5028, S/N 97-3308, w/Devilbiss Desiccant Air System  
 BECCA POWERCLEAN PAINT GUN CLEANING SYSTEMS  
 BINKS PAINT GUNS & EQUIPMENT  
 PAINT BOOTH, 32' Long, 21' Wide X 8' Tall, w/Heated Cross-Flow Evacuation System (Used for wood staining)  
 PAINT MIXERS  
 KREMLIN PAINT DELIVERY SYSTEMS  
 MASKING MACHINES  
 RESPIRATORS, MASKS  
 SODA BLAST BOOTH, 15' Wide X 50' Long X 10' Tall, W/ SodaBlaster Pump System, EIC Heat Unit

**AIR COMPRESSORS**

AIR VOLUME TANKS  
 PNEUMATEC REFRIGERATED AIR DRYER, M# AD400, S/N 9806T129417-ST  
 QUINCY 75 H.P. ROTARY SCREW AIR COMPRESSOR, M# QNW360-B-1, S/N 880134, 460 Volt  
 ZURN REGENERATIVE COMPRESSED AIR DRYER, M# 143-P, S/N HD-1319, 360 SCFM @ 100PSI  
 QUNCY NORTHWEST 75 H.P. ROTARY SCREW AIR COMPRESSOR, M# QNW-371-D/A, S/N 990113C

**MATERIAL HANDLING**

1 TON GANTRY CRANE, 12' X 30', W/ 1 Ton CM Lodestar Hoist  
 1500# OVERHEAD CRANE, 24' Span, 90' Rails, W/ (2) Underslung Bridges, CM Lodestar 1 Ton Electric Hoist  
 30' X 8' HYDRAULIC MATERIAL FLIPPER TABLE  
 BIG JOE 3000# WALK-BEHIND POWER PALLET MOVER  
 CANTILEVER MATERIAL RACKS  
 DUMP HOPPERS  
 FLAMMABLE STORAGE CABINETS  
 HUNTER LIFT 25' SCISSOR LIFT, M# 256, S/N HW87-1, w/Onboard Charger  
 NISSAN 5000# FORKLIFT, M# KPH02A25PV, S/N KPH02P901725, 146" Lift, L.P., Side Shift  
 NISSAN 6000# FORKLIFT, M# KUGH02A30PV, S/N KUGH02P900113, 146" Lift, L.P., Side Shift  
 NISSAN 6000# FORKLIFT, M# KUGH02A30PV, S/N KUGH02P900690, 146" Lift, L.P., Side Shift  
 NISSAN 6000# FORKLIFT, M# MUGL02A30LV, S/N UGL02-9L0126, 146" Lift, L.P., Side Shift  
 NISSAN 6000# FORKLIFT, M# MUGL02A30LV, S/N UGL02-9L0127, 146" Lift, L.P., Side Shift  
 NISSAN 6000# FORKLIFT, M# RGH02A30V, S/N RGH02-920021, 146" Lift, L.P., Side Shift  
 OUTDOOR FLAMMABLE STORAGE UNITS  
 PALLET JACKS  
 PALLET RACKING  
 SKYJACK 25' ELECTRIC MANLIFT, M# SJP25, S/N 00504, 350# Capacity  
 STORAGE CABINETS  
 WAREHOUSE LADDERS



(4) Spray Systems Inc., Air Filtration Systems



Frame Spray Booth



Banza Paint Booth Recovery System



Pneumatec Refrigerated Air Dryer



Paint Support Equipment



View of Welders



Quincy Rotary Screw Air Compressor



30' X 8' Hydraulic Material Flipper Table



Hunter Lift 25' Scissor Lift



Nissan Forklift



Nissan Forklift



Skyjack Elect. Manlift



Outdoor Flammable Storage



1998 Club Car Golf Carts

# VEHICLES • FABRICATION • SUPPORT EQUIPMENT



2001 Ford F350 XLT Super Duty Pickup



John Deere 2355N Tractor



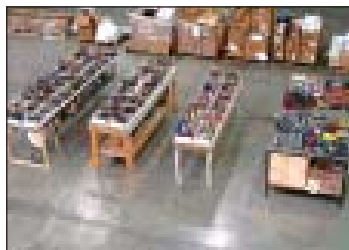
(2) 2004 Wells Cargo 24' Enclosed Trailer



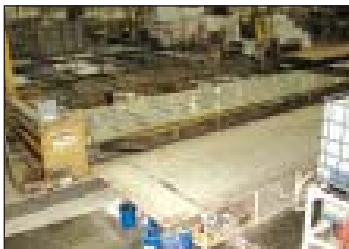
3 Tier Vacuum Lamination Machine



Lasalle-Deitch Roll Former



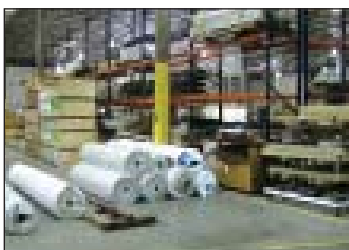
View of Hand Tools



Lamination Machine / Glue Applicator



View of Inventory



View of Floor Coverings



View of Inventory



View of RV Store Inventory



MTM Steam Cleaner

## VEHICLES

2001 FORD F350 XLT SUPER DUTY PICKUP, V10, Automatic, VIN 1FTSX30S91EC46394  
 1999 FORD F350 LARIAT SUPER DUTY PICKUP, V10, Automatic, VIN 1FTSX3058YEB50735  
 1996 DODGE RAM 2500 PICKUP, V10, Automatic, VIN 1B7KC23WBTJ150884

(2) 1998 CLUB CAR GOLF CARTS, S/N's AG9839-698688, AG9839-698684, Gas Powered, w/Foldable Rear Seat/Utility Bed

(2) 2004 WELLS CARGO 24' ENCLOSED TRAILER, M# EW2424, VIN'S 1WC200L2244053560, 1WC200L2244053561

(4) FIFTH WHEEL UTILITY TRAILERS

JOHN DEERE 2355N TRACTOR, S/N XL02355G77677, w/7' Front Loader, Rear Trailer Towing Unit

## FABRICATION

3 TIER VACUUM LAMINATION MACHINE, 116" X 40', w/(2) Vacuum Pumps, (3) Vacuum Volume Tanks, (4) Hydraulic Units, Adhesive Application Gantry System, Total Control Quickpanel Controls

GEKA HYDRACROP 55/A IRON WORKER, 60 Ton Hydraulic, S/N 10831, Plate Shear 12" X 5/8", Angle Shear (4 1/2" X 4 1/2" X 3/8"), Channel Shear (1 1/2" X 3/8"), 1 9/16" Round, 1 9/16" Square, Coper, Notcher

HE&M VERTICAL TILT FRAME BAND SAW, M# V100LM-2, S/N 487996, 18" X 22" Capacity, 1 1/4" Blade, 5 H.P.

HUCK HYDRAULIC FASTENER SYSTEM

HUGE SELECTION OF HAND AND POWER TOOLS, AIR NAILERS, STAPLERS, DRILLS, ROUTERS, SAWS, SANDERS, GRINDERS, RIVET GUNS, CLAMPS, JACKS, ELECTRONIC TESTING EQUIPMENT, BATTERY CHARGERS, SHOP VACS, LADDERS, RECHARGEABLES

LASALLE-DEITCH ROLL FORMER, M# 2.5 x 14, S/N 96007, 14 Rolls, (Produces 2 1/2" X 14" Rectangular HVAC Duct)

STEEL MATERIAL, w/Racks

CENTRAL MACHINERY 17", 16 Speed Drill Presses

DEWALT ABRASIVE CUT-OFF SAW

MILWAUKEE 1/2" MAGNETIC BASE DRILL, M# 1202, S/N 059810376

## SUPPORT EQUIPMENT

BATTERY CHARGERS

LANDA POWER WASHER

PEDESTAL FANS

POLYCHEM STRAPPING MACHINE, M# PC500

BD LOAD O METER PORTABLE TRUCK SCALES

PNEUMATIC & HYDRAULIC FLOOR JACKS

## LODGING

Quality Inn

12 E. Valley Mall Blvd., Yakima, WA 98903 ..... (509) 248-6924

Best Western Ahtanum Inn

2408 Rudkin Road, Yakima, WA 98901 ..... (509) 248 9700

Fairfield Inn & Suites by Marriott

137 North Fair Ave., Yakima, WA 98901 ..... (509) 452-3100

Holiday Inn Express

1010 East "A" St. Yakima, WA 98901 ..... (509) 452-8101

## DIRECTIONS

FROM: Yakima/Union Gap, Washington, I-82, East or West Bound, Exit #36 (Union Gap/Valley Mall Blvd.), West on Valley Mall Blvd. 1.2 Miles to Longfibre Rd., South on Longfibre Rd. 200' to Market St., East on Market St. 1/8 Miles to Sutherland Drive, South on Sutherland Dr. 1/4 mile to Sale Site, Signs will be Posted.

**LEASE/FINANCING AVAILABLE  
 DIRECT FROM  
 Charcole Capital Corporation  
[www.charcolecapital.com](http://www.charcolecapital.com)**

**LIVE  
ON-SITE &  
WEBCAST**

# RV & MACHINERY AUCTION

**HUGE 2-DAY AUCTION • Thursday & Friday, June 26 & 27**

**OVER  
3,000 LOTS**

**EVERYTHING  
SELLS!**

*Formerly the Assets of:*  
**WESTERN RECREATIONAL VEHICLES, INC.**

**Over (40) Completed Motorcoaches & 5th Wheel Trailers • Manufacturing Equipment**

## AUCTION

June 26th & 27th, 2008  
Beginning at 9:00am PDT Each Day

## PREVIEW

Wednesday, June 25th  
9:00am - 4:00pm PDT

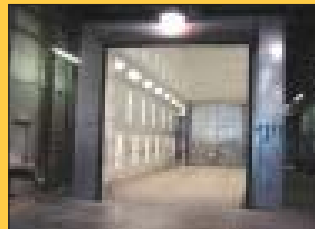
## LOCATION

2921 Sutherland Road  
Union Gap (Yakima), WA 98903

**FOR THE COMPLETE TERMS & CONDITIONS OF THE AUCTION • Please visit our website [www.BIDITUP.com](http://www.BIDITUP.com) and click on WESTERN RECREATIONAL VEHICLES, INC.**

**Thinking of having an auction or need an appraisal? Call us at 818.508.7034**

**HUGE 2-DAY AUCTION  
JUNE 26 & 27, 2008  
Union Gap (Yakima), WA  
*Formerly the Assets of:*  
WESTERN RECREATIONAL  
VEHICLES, INC.  
Over (40) Completed  
Motorcoaches and  
5th Wheel Trailers  
Manufacturing Equipment**



**For a Complete Listing of  
Upcoming Auctions Visit  
[www.BIDITUP.com](http://www.BIDITUP.com)  
Register Online and Receive Auction  
Updates and Information via E-mail.**

## WEBCAST



Can't attend the auction in person? You can participate and bid in real time via the Internet. Preview assets with detailed digital photos, lot catalogs, and in-depth descriptions.

**For more information, visit  
[www.BIDITUP.com](http://www.BIDITUP.com)**

**BIDITUP**<sup>TM</sup>  
AUCTIONS & APPRAISALS WORLDWIDE  
11426 Ventura Boulevard  
Studio City, California 91604  
Phone: 818.508.7034  
Fax: 818.508.3025  
info@biditup.com

Auctioneer: Tim Watters, WA License #2698  
Biditup Auctions, WA License #2277

**RV & MACHINERY AUCTION, LOOK INSIDE!**

**ATTENTION: PLANT MANAGER  
OR EQUIPMENT BUYER**